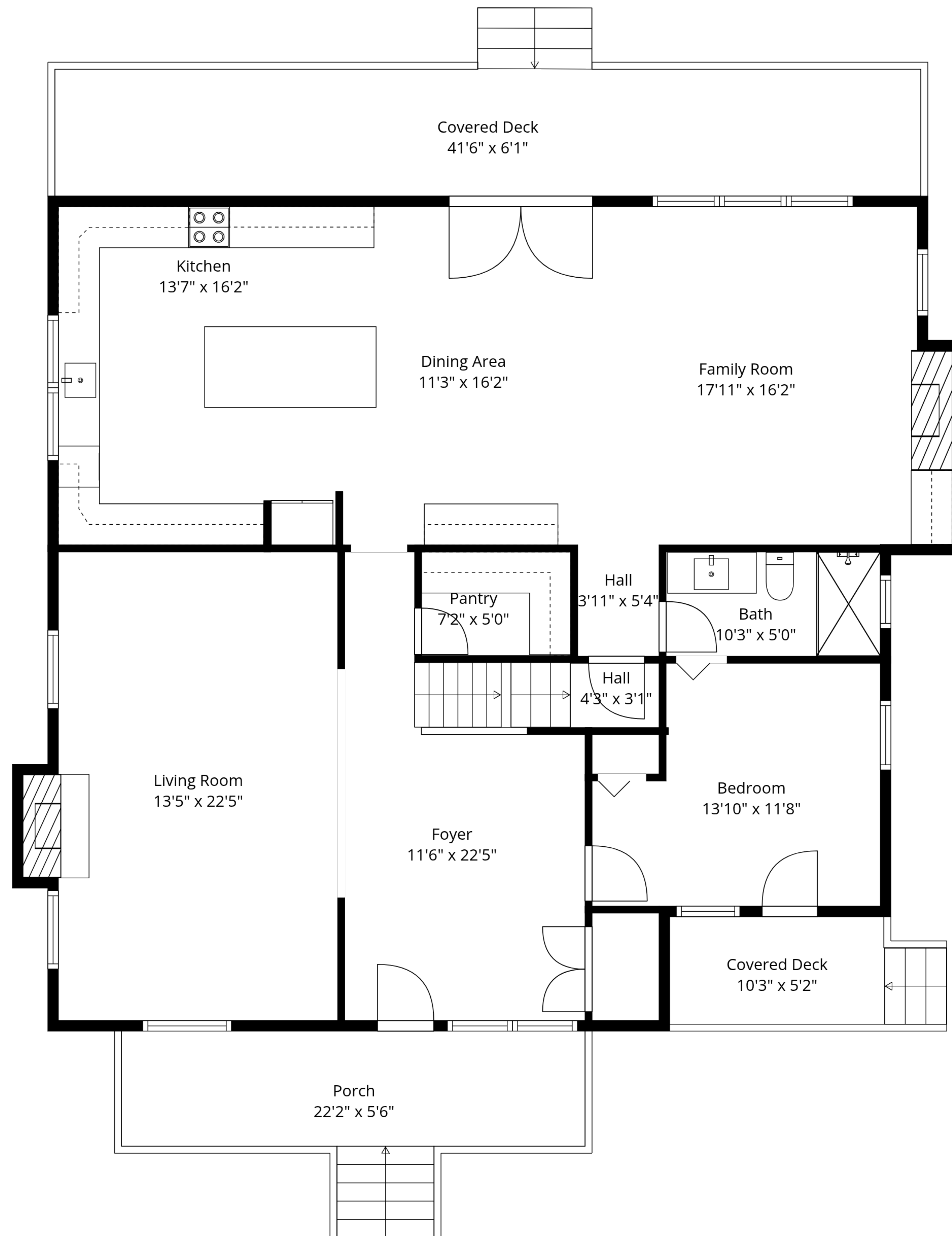


Basement
28'9" x 18'7"

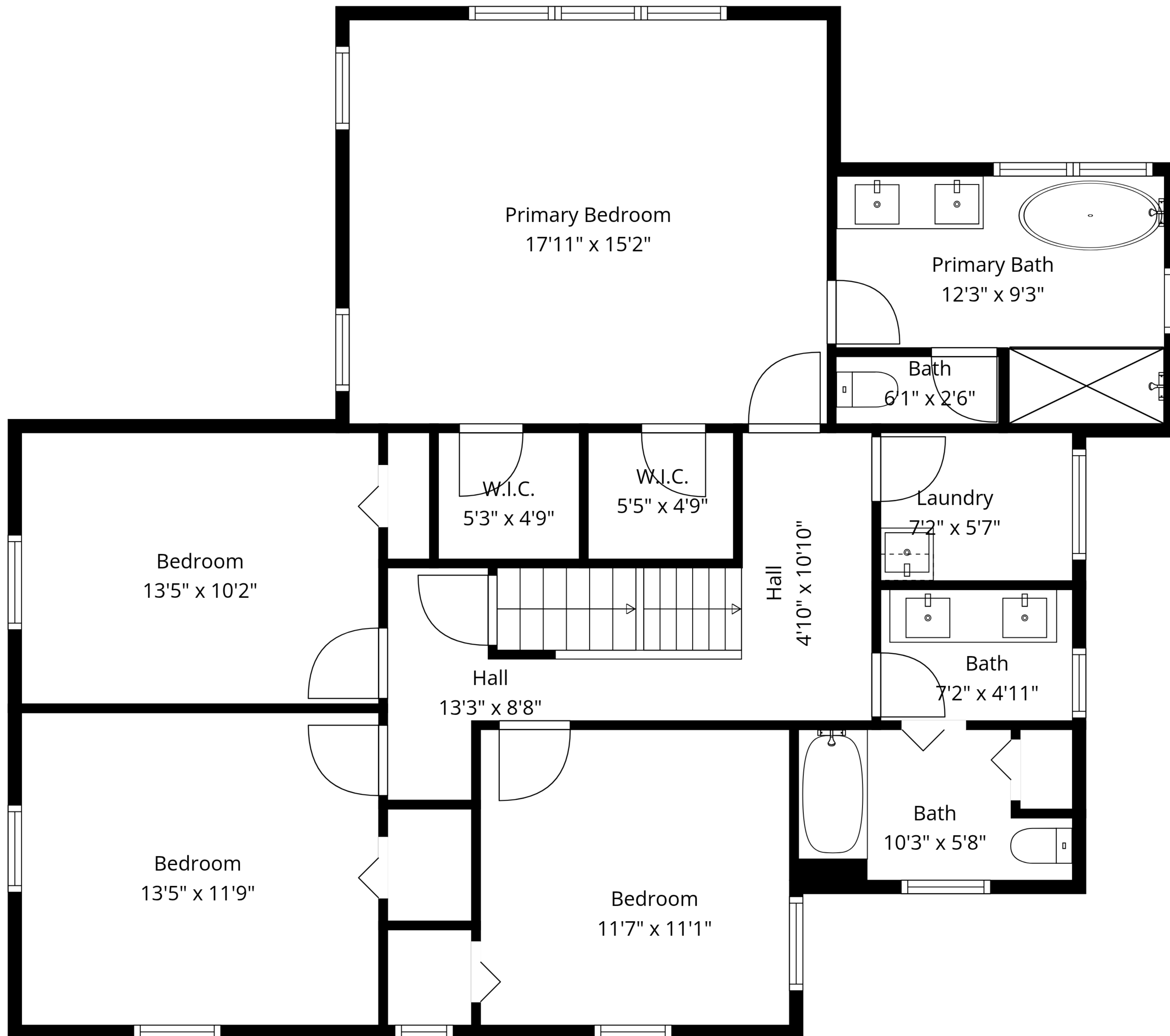
TOTAL: 2737 sq. ft

Basement: 0 sq. ft, 1st floor: 1523 sq. ft, 2nd floor: 1214 sq. ft, 3rd floor: 0 sq. ft
EXCLUDED AREAS: BASEMENT: 558 sq. ft, PORCH: 143 sq. ft, COVERED DECK: 332 sq. ft,
FIREPLACE: 10 sq. ft, LOW CEILING: 253 sq. ft, ATTIC: 509 sq. ft,
WALLS: 277 sq. ft



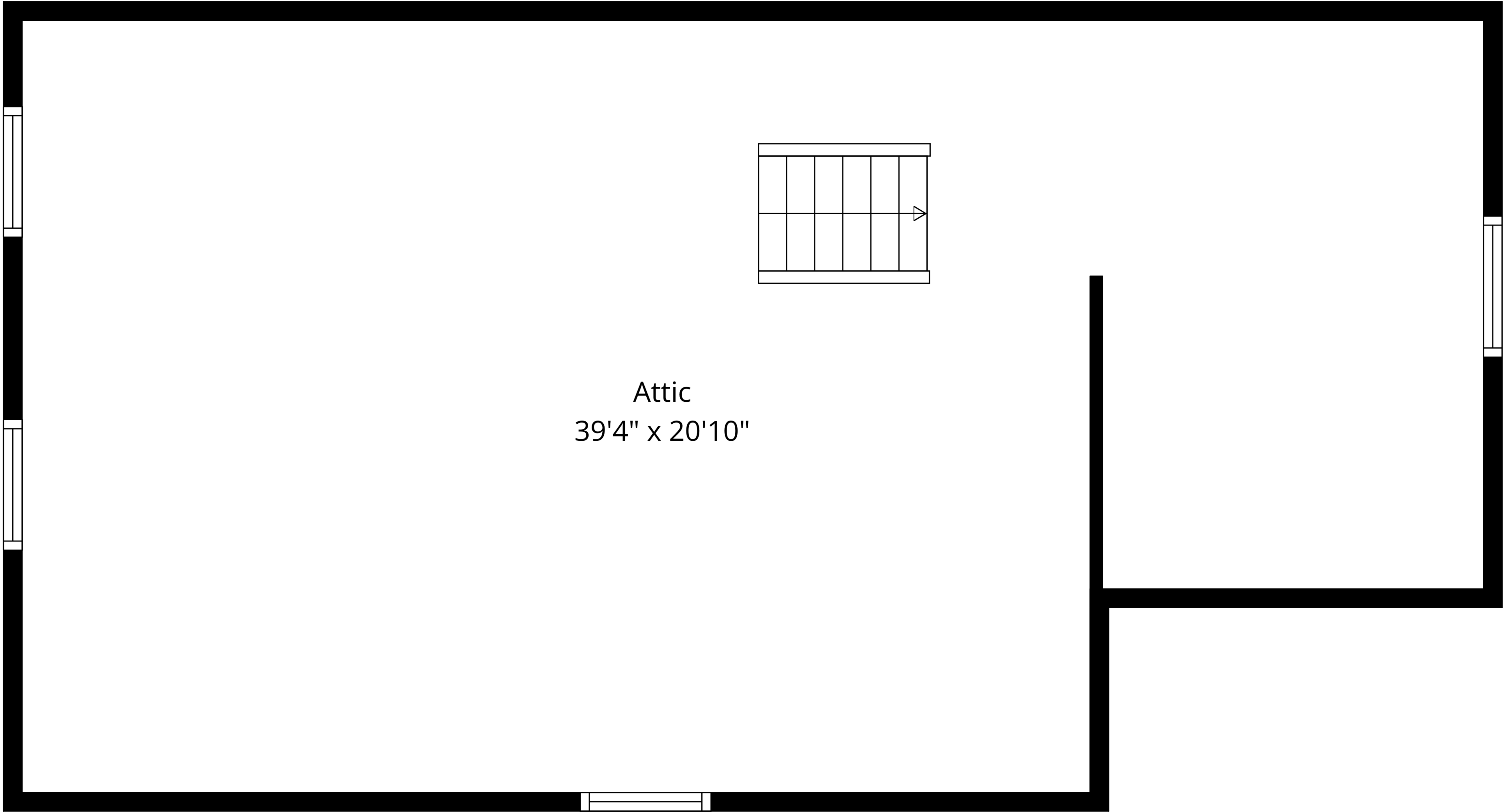
TOTAL: 2737 sq. ft

Basement: 0 sq. ft, 1st floor: 1523 sq. ft, 2nd floor: 1214 sq. ft, 3rd floor: 0 sq. ft
 EXCLUDED AREAS: BASEMENT: 558 sq. ft, PORCH: 143 sq. ft, COVERED DECK: 332 sq. ft,
 FIREPLACE: 10 sq. ft, LOW CEILING: 253 sq. ft, ATTIC: 509 sq. ft,
 WALLS: 277 sq. ft



TOTAL: 2737 sq. ft

Basement: 0 sq. ft, 1st floor: 1523 sq. ft, 2nd floor: 1214 sq. ft, 3rd floor: 0 sq. ft
 EXCLUDED AREAS: BASEMENT: 558 sq. ft, PORCH: 143 sq. ft, COVERED DECK: 332 sq. ft,
 FIREPLACE: 10 sq. ft, LOW CEILING: 253 sq. ft, ATTIC: 509 sq. ft,
 WALLS: 277 sq. ft

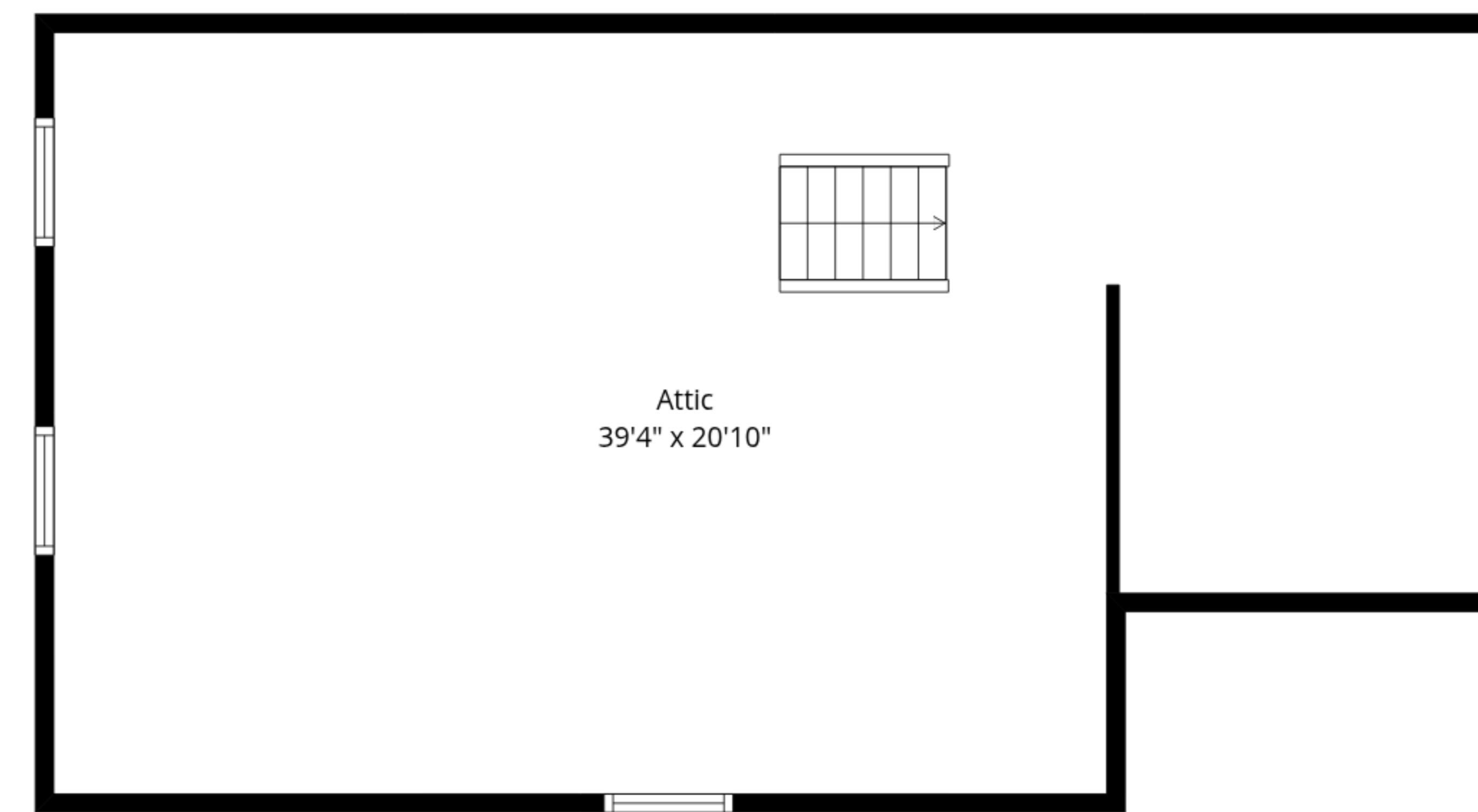
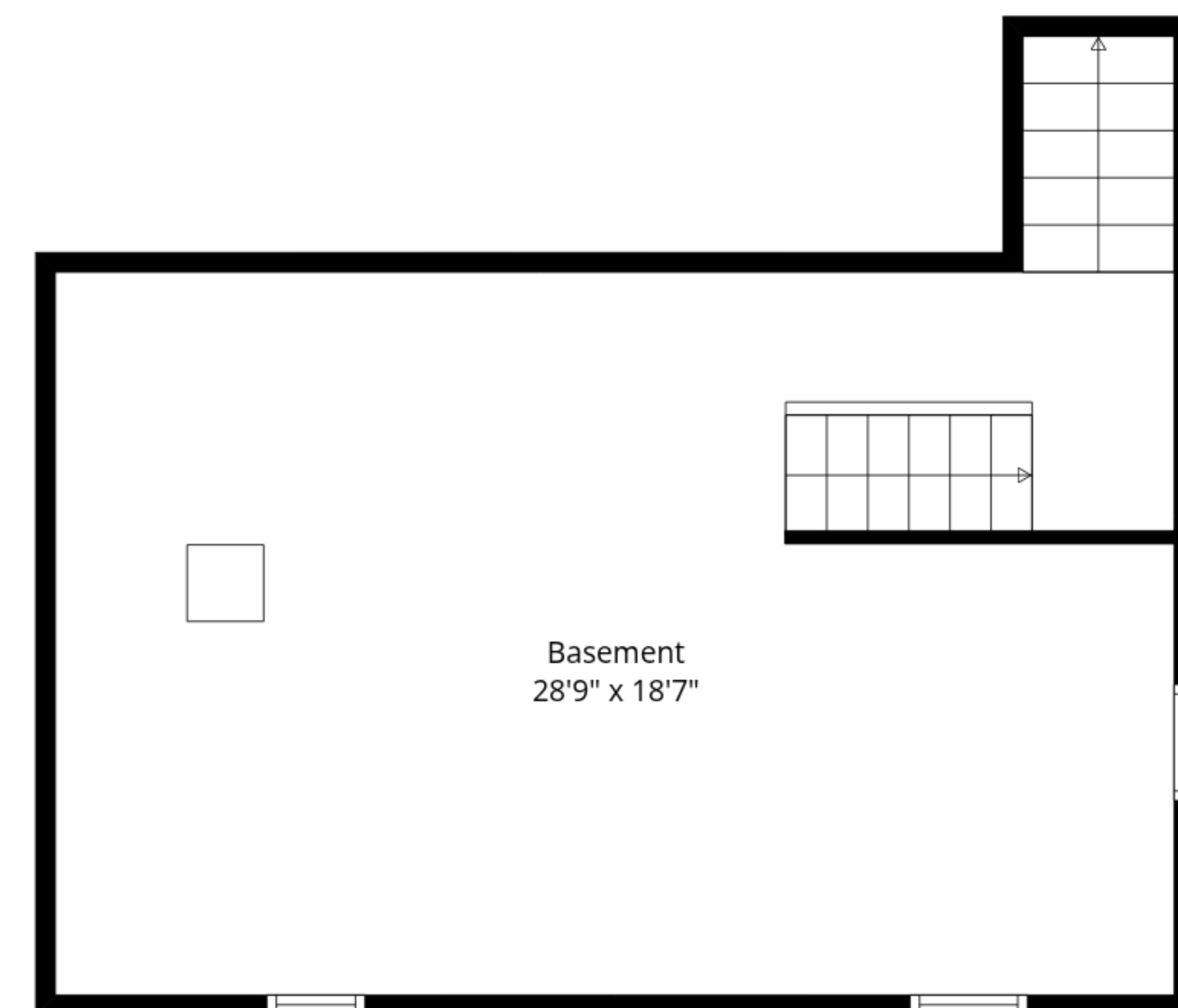
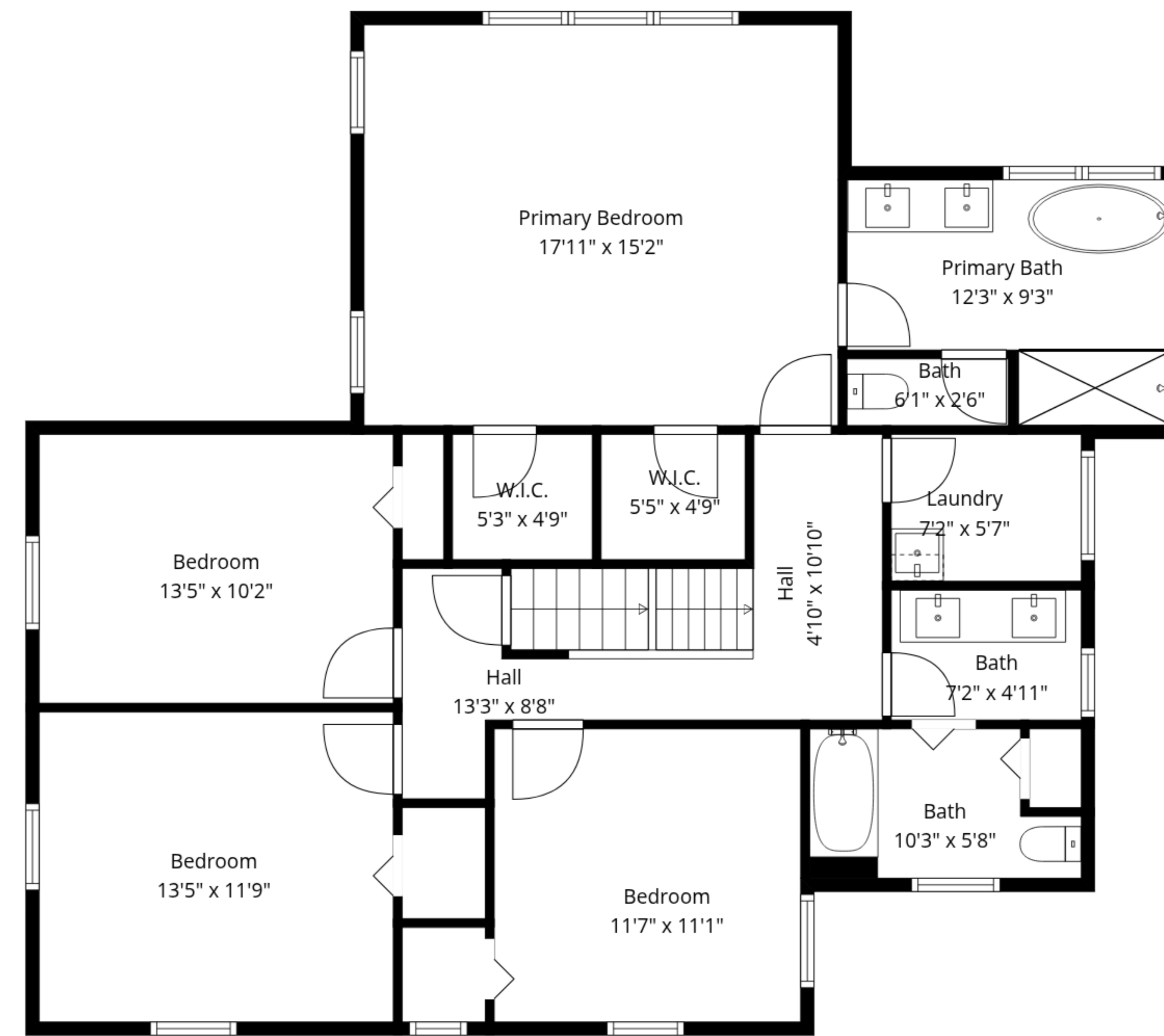
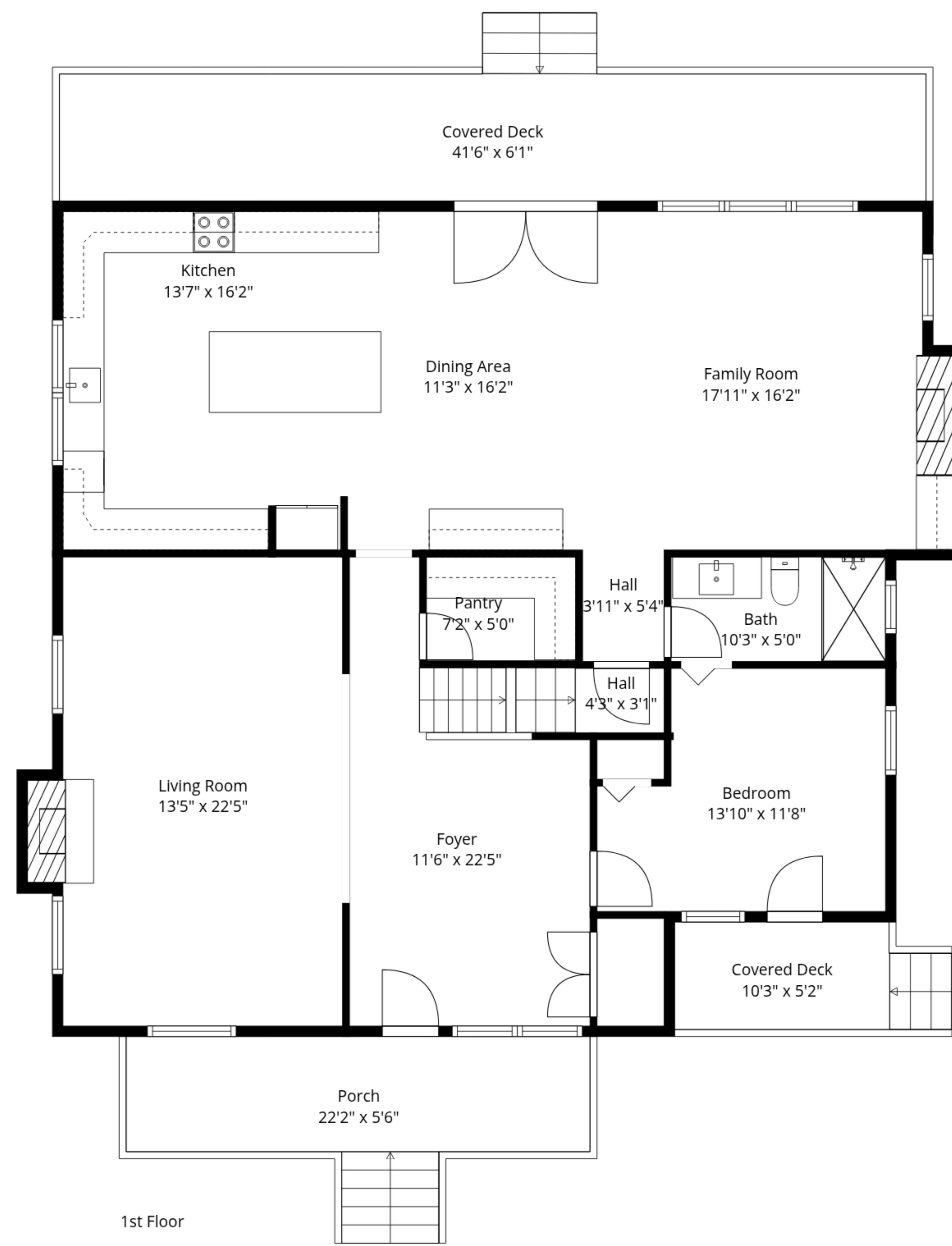


Attic
39'4" x 20'10"

TOTAL: 2737 sq. ft

Basement: 0 sq. ft, 1st floor: 1523 sq. ft, 2nd floor: 1214 sq. ft, 3rd floor: 0 sq. ft
EXCLUDED AREAS: BASEMENT: 558 sq. ft, PORCH: 143 sq. ft, COVERED DECK: 332 sq. ft,
FIREPLACE: 10 sq. ft, LOW CEILING: 253 sq. ft, ATTIC: 509 sq. ft,
WALLS: 277 sq. ft

Measurements Are Approximate - Deemed Highly Reliable But Not Guaranteed



TOTAL: 2737 sq. ft
 Basement: 0 sq. ft, 1st floor: 1523 sq. ft, 2nd floor: 1214 sq. ft, 3rd floor: 0 sq. ft
 EXCLUDED AREAS: BASEMENT: 558 sq. ft, PORCH: 143 sq. ft, COVERED DECK: 332 sq. ft,
 FIREPLACE: 10 sq. ft, LOW CEILING: 253 sq. ft, ATTIC: 509 sq. ft,
 WALLS: 277 sq. ft

Measurements Are Approximate - Deemed Highly Reliable But Not Guaranteed