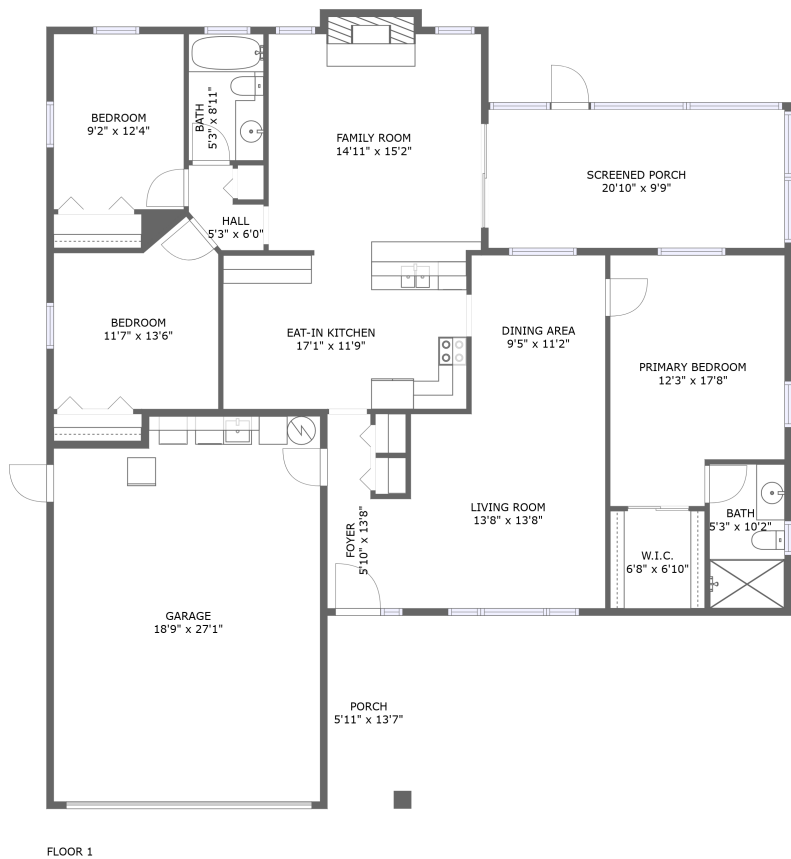


Home report

12595 93rd Way North, Shadow Pines, Largo, Pinellas County, Florida, United States, 33773



Total Area: 1491 sq. ft

Floor 1: 1491 sq. ft


Excluded: Porch 80 sq. ft, Screened porch 203 sq. ft, Garage 492 sq. ft, Fireplace 9 sq. ft, Walls: 137 sq. ft

Property summary

 **1** Floors

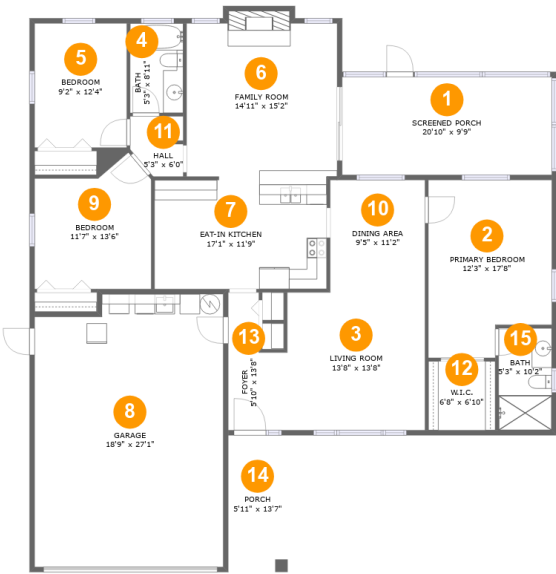
 **3** Bedrooms

 **2** Bathrooms

 **1** Garages

Home report

12595 93rd Way North, Shadow Pines, Largo, Pinellas County, Florida, United States, 33773



Room dimensions

Floor 1 Total:1491sqft   Excluded: 784sqft

#		Max Dimensions	sqft	Included
1	Screened Porch	20'10" x 9'9"	203 sq. ft	No
2	Primary Bedroom	12'3" x 17'8"	198 sq. ft	Yes
3	Living Room	13'8" x 13'8"	187 sq. ft	Yes
4	Bath	5'3" x 8'11"	47 sq. ft	Yes
5	Bedroom	9'2" x 12'4"	113 sq. ft	Yes
6	Family Room	14'11" x 15'2"	230 sq. ft	Yes
7	Eat-in Kitchen	17'1" x 11'9"	193 sq. ft	Yes
8	Garage	18'9" x 27'1"	492 sq. ft	No
9	Bedroom	11'7" x 13'6"	134 sq. ft	Yes
10	Dining Area	9'5" x 11'2"	105 sq. ft	Yes
11	Hall	5'3" x 6'0"	23 sq. ft	Yes

## Home report

**12595 93rd Way North, Shadow Pines, Largo, Pinellas County,  
Florida, United States, 33773**

#		Max Dimensions	sqft	Included
12	W.I.C.	6'8" x 6'10"	46 sq. ft	Yes
13	Foyer	5'10" x 13'8"	63 sq. ft	Yes
14	Porch	5'11" x 13'7"	80 sq. ft	No
15	Bath	5'3" x 10'2"	53 sq. ft	Yes

12595 93rd Way North, Shadow Pines, Largo, Pinellas County,  
Florida, United States, 33773

1 Floor 1 - Screened Porch



Max Dimensions: 20'10" x 9'9"  
Calculated Area: 203 sq. ft  
Included: No

Heated: No  
Finished: Yes  
Enclosed: No  
Contiguous: Yes  
Permitted: Yes  
Wet space: No  
Addition: No  
Conversion: No

2 Floor 1 - Primary Bedroom



Max Dimensions: 12'3" x 17'8"  
Calculated Area: 198 sq. ft  
Included: Yes

Heated: Yes  
Finished: Yes  
Enclosed: Yes  
Contiguous: Yes  
Permitted: Yes  
Wet space: No  
Addition: No  
Conversion: No

12595 93rd Way North, Shadow Pines, Largo, Pinellas County,  
Florida, United States, 33773

### 3 Floor 1 - Living Room



Max Dimensions: 13'8" x 13'8"  
Calculated Area: 187 sq. ft  
Included: Yes

Heated: Yes  
Finished: Yes  
Enclosed: Yes  
Contiguous: Yes  
Permitted: Yes  
Wet space: No  
Addition: No  
Conversion: No

### 4 Floor 1 - Bath



Max Dimensions: 5'3" x 8'11"  
Calculated Area: 47 sq. ft  
Included: Yes

Heated: Yes  
Finished: Yes  
Enclosed: Yes  
Contiguous: Yes  
Permitted: Yes  
Wet space: Yes  
Addition: No  
Conversion: No

### 5 Floor 1 - Bedroom

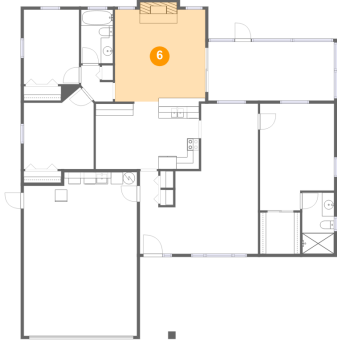


Max Dimensions: 9'2" x 12'4"  
Calculated Area: 113 sq. ft  
Included: Yes

Heated: Yes  
Finished: Yes  
Enclosed: Yes  
Contiguous: Yes  
Permitted: Yes  
Wet space: No  
Addition: No  
Conversion: No

12595 93rd Way North, Shadow Pines, Largo, Pinellas County,  
Florida, United States, 33773

## 6 Floor 1 - Family Room



Max Dimensions: 14'11" x 15'2"  
Calculated Area: 230 sq. ft  
Included: Yes

Heated: Yes  
Finished: Yes  
Enclosed: Yes  
Contiguous: Yes  
Permitted: Yes  
Wet space: No  
Addition: No  
Conversion: No

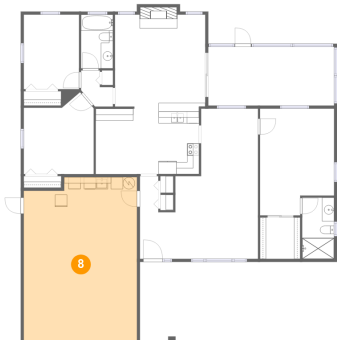
## 7 Floor 1 - Eat-in Kitchen



Max Dimensions: 17'1" x 11'9"  
Calculated Area: 193 sq. ft  
Included: Yes

Heated: Yes  
Finished: Yes  
Enclosed: Yes  
Contiguous: Yes  
Permitted: Yes  
Wet space: No  
Addition: No  
Conversion: No

## 8 Floor 1 - Garage



Max Dimensions: 18'9" x 27'1"  
Calculated Area: 492 sq. ft  
Included: No

Heated: No  
Finished: No  
Enclosed: Yes  
Contiguous: Yes  
Permitted: Yes  
Wet space: No  
Addition: No  
Conversion: No

12595 93rd Way North, Shadow Pines, Largo, Pinellas County,  
Florida, United States, 33773

## 9 Floor 1 - Bedroom



Max Dimensions: 11'7" x 13'6"  
Calculated Area: 134 sq. ft  
Included: Yes

Heated: Yes  
Finished: Yes  
Enclosed: Yes  
Contiguous: Yes  
Permitted: Yes  
Wet space: No  
Addition: No  
Conversion: No

## 10 Floor 1 - Dining Area



Max Dimensions: 9'5" x 11'2"  
Calculated Area: 105 sq. ft  
Included: Yes

Heated: Yes  
Finished: Yes  
Enclosed: Yes  
Contiguous: Yes  
Permitted: Yes  
Wet space: No  
Addition: No  
Conversion: No

## 11 Floor 1 - Hall



Max Dimensions: 5'3" x 6'0"  
Calculated Area: 23 sq. ft  
Included: Yes

Heated: Yes  
Finished: Yes  
Enclosed: Yes  
Contiguous: Yes  
Permitted: Yes  
Wet space: No  
Addition: No  
Conversion: No

12595 93rd Way North, Shadow Pines, Largo, Pinellas County,  
Florida, United States, 33773

## 12 Floor 1 - W.I.C.



Max Dimensions: 6'8" x 6'10"  
Calculated Area: 46 sq. ft  
Included: Yes

Heated: Yes  
Finished: Yes  
Enclosed: Yes  
Contiguous: Yes  
Permitted: Yes  
Wet space: No  
Addition: No  
Conversion: No

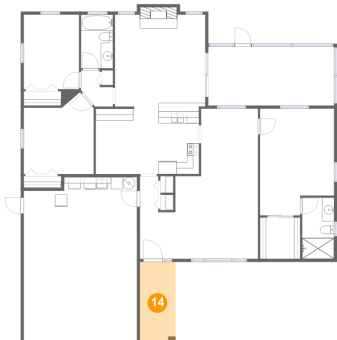
## 13 Floor 1 - Foyer



Max Dimensions: 5'10" x 13'8"  
Calculated Area: 63 sq. ft  
Included: Yes

Heated: Yes  
Finished: Yes  
Enclosed: Yes  
Contiguous: Yes  
Permitted: Yes  
Wet space: No  
Addition: No  
Conversion: No

## 14 Floor 1 - Porch



Max Dimensions: 5'11" x 13'7"  
Calculated Area: 80 sq. ft  
Included: No

Heated: No  
Finished: Yes  
Enclosed: No  
Contiguous: Yes  
Permitted: Yes  
Wet space: No  
Addition: No  
Conversion: No



12595 93rd Way North, Shadow Pines, Largo, Pinellas County,  
Florida, United States, 33773

**15** Floor 1 - Bath



Max Dimensions: 5'3" x 10'2"  
Calculated Area: 53 sq. ft  
Included: Yes

Heated: Yes  
Finished: Yes  
Enclosed: Yes  
Contiguous: Yes  
Permitted: Yes  
Wet space: Yes  
Addition: No  
Conversion: No