




Home data report

**431 McGregor Point, Alburgh, Grand Isle County, Vermont,  
United States, 05440**

 **2**  
Half baths

 **1**  
Garages

**431 McGregor Point, Alburgh, Grand Isle County, Vermont,  
United States, 05440**



**Room dimensions**

Floor 1

Total:3632sqft

Excluded: 2235sqft

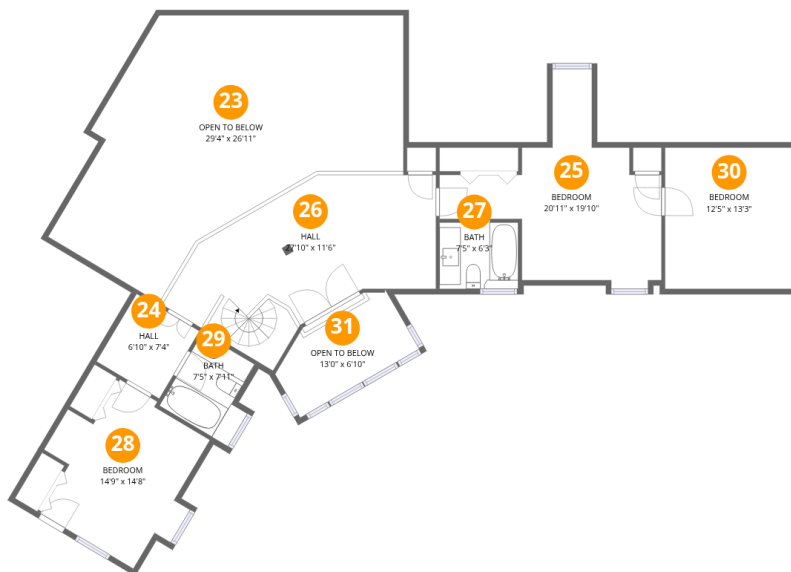
#		Dimensions	sqft	Counted as living area
1	Patio	16'1" x 15'3"	238 sq. ft	No
2	Bath	12'4" x 10'9"	116 sq. ft	Yes
3	Laundry	5'8" x 11'5"	53 sq. ft	Yes
4	Covered Deck	25'2" x 18'2"	435 sq. ft	No
5	Bath	7'0" x 9'2"	57 sq. ft	Yes
6	Sun Room	19'4" x 18'4"	299 sq. ft	Yes
7	Bedroom	11'11" x 17'3"	205 sq. ft	Yes
8	Foyer	13'0" x 14'0"	128 sq. ft	Yes
9	Storage	12'0" x 20'0"	240 sq. ft	No
10	Bedroom	39'2" x 19'3"	658 sq. ft	Yes
11	Primary Bedroom	12'3" x 22'10"	260 sq. ft	Yes

Home data report

**431 McGregor Point, Alburgh, Grand Isle County, Vermont,  
United States, 05440**

#		Dimensions	sqft	Counted as living area
12	Garage	21'3" x 25'9"	547 sq. ft	No
13	Deck	43'0" x 27'7"	764 sq. ft	No
14	Hall	12'3" x 5'7"	51 sq. ft	Yes
15	Bath	5'1" x 5'7"	25 sq. ft	Yes
16	Dining Area	19'1" x 21'0"	354 sq. ft	Yes
17	Entry	10'5" x 8'4"	65 sq. ft	Yes
18	Hall	11'4" x 8'7"	67 sq. ft	Yes
19	Hall	2'11" x 12'0"	35 sq. ft	Yes
20	Kitchen	15'8" x 16'9"	260 sq. ft	Yes
21	Bath	5'11" x 4'9"	28 sq. ft	Yes
22	Living Room	32'7" x 31'8"	730 sq. ft	Yes

**431 McGregor Point, Alburgh, Grand Isle County, Vermont,  
United States, 05440**



**Room dimensions**

Floor 2

Total:1087sqft

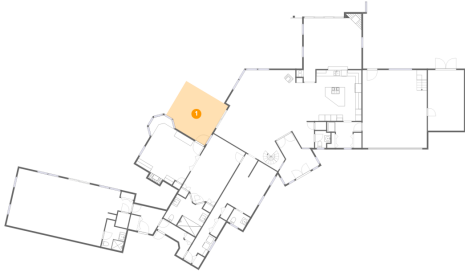
Excluded: 631sqft

#		Dimensions	sqft	Counted as living area
23	Open To Below	29'4" x 26'11"	550 sq. ft	No
24	Hall	6'10" x 7'4"	51 sq. ft	Yes
25	Bedroom	20'11" x 19'10"	218 sq. ft	Yes
26	Hall	27'10" x 11'6"	289 sq. ft	Yes
27	Bath	7'5" x 6'3"	46 sq. ft	Yes
28	Bedroom	14'9" x 14'8"	164 sq. ft	Yes
29	Bath	7'5" x 7'11"	52 sq. ft	Yes
30	Bedroom	12'5" x 13'3"	165 sq. ft	Yes
31	Open To Below	13'0" x 6'10"	81 sq. ft	No

431 McGregor Point, Alburgh, Grand Isle County, Vermont,  
United States, 05440

**1** Floor 1 - Patio

---



Dimensions: 16'1" x 15'3"  
Area: 238 sq. ft  
Counted as living area: No

Heated: No  
Finished: No  
Enclosed: No  
Contiguous: Yes  
Permitted: Yes  
Wet space: No  
Addition: No  
Conversion: No

**2** Floor 1 - Bath

---



Dimensions: 12'4" x 10'9"  
Area: 116 sq. ft  
Counted as living area: Yes

Heated: Yes  
Finished: Yes  
Enclosed: Yes  
Contiguous: Yes  
Permitted: Yes  
Wet space: Yes  
Addition: No  
Conversion: No

431 McGregor Point, Alburgh, Grand Isle County, Vermont,  
United States, 05440

**3** Floor 1 - Laundry

---

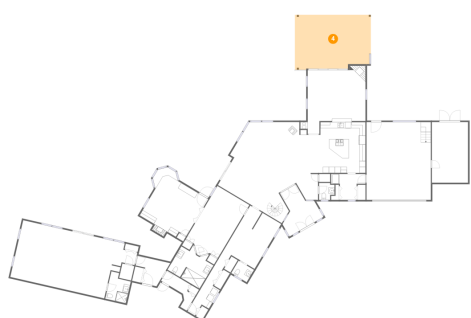


Dimensions: 5'8" x 11'5"  
Area: 53 sq. ft  
Counted as living area: Yes

Heated: Yes  
Finished: Yes  
Enclosed: Yes  
Contiguous: Yes  
Permitted: Yes  
Wet space: No  
Addition: No  
Conversion: No

**4** Floor 1 - Covered Deck

---



Dimensions: 25'2" x 18'2"  
Area: 435 sq. ft  
Counted as living area: No

Heated: No  
Finished: No  
Enclosed: No  
Contiguous: Yes  
Permitted: Yes  
Wet space: No  
Addition: No  
Conversion: No

**5** Floor 1 - Bath

---



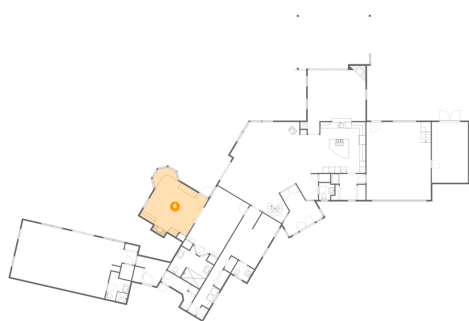
Dimensions: 7'0" x 9'2"  
Area: 57 sq. ft  
Counted as living area: Yes

Heated: Yes  
Finished: Yes  
Enclosed: Yes  
Contiguous: Yes  
Permitted: Yes  
Wet space: Yes  
Addition: No  
Conversion: No

431 McGregor Point, Alburgh, Grand Isle County, Vermont,  
United States, 05440

**6** Floor 1 - Sun Room

---



Dimensions: 19'4" x 18'4"  
Area: 299 sq. ft  
Counted as living area: Yes

Heated: Yes  
Finished: Yes  
Enclosed: Yes  
Contiguous: Yes  
Permitted: Yes  
Wet space: No  
Addition: No  
Conversion: No

**7** Floor 1 - Bedroom

---



Dimensions: 11'11" x 17'3"  
Area: 205 sq. ft  
Counted as living area: Yes

Heated: Yes  
Finished: Yes  
Enclosed: Yes  
Contiguous: Yes  
Permitted: Yes  
Wet space: No  
Addition: No  
Conversion: No

**8** Floor 1 - Foyer

---

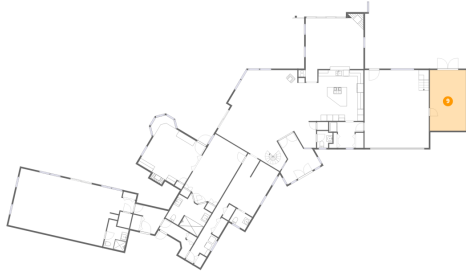


Dimensions: 13'0" x 14'0"  
Area: 128 sq. ft  
Counted as living area: Yes

Heated: Yes  
Finished: Yes  
Enclosed: Yes  
Contiguous: Yes  
Permitted: Yes  
Wet space: No  
Addition: No  
Conversion: No

431 McGregor Point, Alburgh, Grand Isle County, Vermont,  
United States, 05440

9 Floor 1 - Storage



Dimensions: 12'0" x 20'0"  
Area: 240 sq. ft  
Counted as living area: No

Heated: No  
Finished: No  
Enclosed: No  
Contiguous: Yes  
Permitted: Yes  
Wet space: No  
Addition: No  
Conversion: No

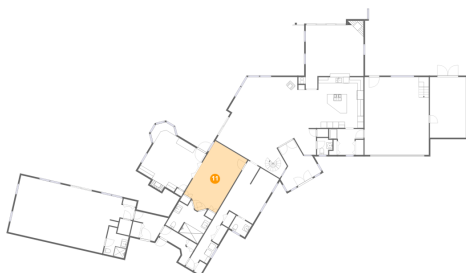
10 Floor 1 - Bedroom



Dimensions: 39'2" x 19'3"  
Area: 658 sq. ft  
Counted as living area: Yes

Heated: Yes  
Finished: Yes  
Enclosed: Yes  
Contiguous: Yes  
Permitted: Yes  
Wet space: No  
Addition: No  
Conversion: No

11 Floor 1 - Primary Bedroom



Dimensions: 12'3" x 22'10"  
Area: 260 sq. ft  
Counted as living area: Yes

Heated: Yes  
Finished: Yes  
Enclosed: Yes  
Contiguous: Yes  
Permitted: Yes  
Wet space: No  
Addition: No  
Conversion: No

431 McGregor Point, Alburgh, Grand Isle County, Vermont,  
United States, 05440

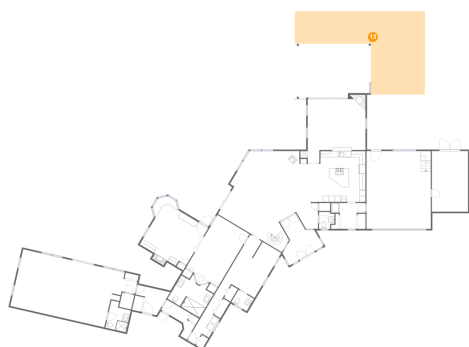
**12** Floor 1 - Garage



Dimensions: 21'3" x 25'9"  
Area: 547 sq. ft  
Counted as living area: No

Heated: No  
Finished: No  
Enclosed: Yes  
Contiguous: Yes  
Permitted: Yes  
Wet space: No  
Addition: No  
Conversion: No

**13** Floor 1 - Deck



Dimensions: 43'0" x 27'7"  
Area: 764 sq. ft  
Counted as living area: No

Heated: No  
Finished: No  
Enclosed: No  
Contiguous: Yes  
Permitted: Yes  
Wet space: No  
Addition: No  
Conversion: No

**14** Floor 1 - Hall



Dimensions: 12'3" x 5'7"  
Area: 51 sq. ft  
Counted as living area: Yes

Heated: Yes  
Finished: Yes  
Enclosed: Yes  
Contiguous: Yes  
Permitted: Yes  
Wet space: No  
Addition: No  
Conversion: No

431 McGregor Point, Alburgh, Grand Isle County, Vermont,  
United States, 05440

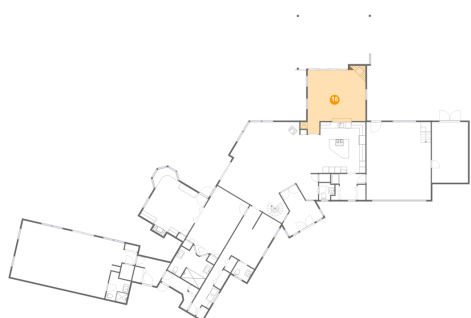
15 Floor 1 - Bath



Dimensions: 5'1" x 5'7"  
Area: 25 sq. ft  
Counted as living area: Yes

Heated: Yes  
Finished: Yes  
Enclosed: Yes  
Contiguous: Yes  
Permitted: Yes  
Wet space: No  
Addition: No  
Conversion: No

16 Floor 1 - Dining Area



Dimensions: 19'1" x 21'0"  
Area: 354 sq. ft  
Counted as living area: Yes

Heated: Yes  
Finished: Yes  
Enclosed: Yes  
Contiguous: Yes  
Permitted: Yes  
Wet space: No  
Addition: No  
Conversion: No

17 Floor 1 - Entry



Dimensions: 10'5" x 8'4"  
Area: 65 sq. ft  
Counted as living area: Yes

Heated: Yes  
Finished: Yes  
Enclosed: Yes  
Contiguous: Yes  
Permitted: Yes  
Wet space: No  
Addition: No  
Conversion: No

431 McGregor Point, Alburgh, Grand Isle County, Vermont,  
United States, 05440

18 Floor 1 - Hall



Dimensions: 11'4" x 8'7"  
Area: 67 sq. ft  
Counted as living area: Yes

Heated: Yes  
Finished: Yes  
Enclosed: Yes  
Contiguous: Yes  
Permitted: Yes  
Wet space: No  
Addition: No  
Conversion: No

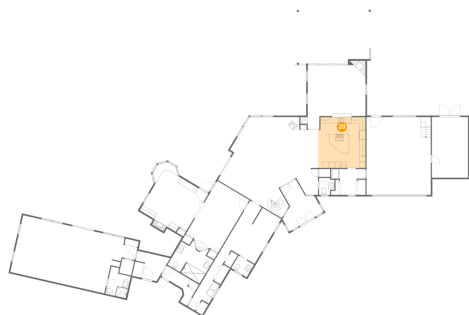
19 Floor 1 - Hall



Dimensions: 2'11" x 12'0"  
Area: 35 sq. ft  
Counted as living area: Yes

Heated: Yes  
Finished: Yes  
Enclosed: Yes  
Contiguous: Yes  
Permitted: Yes  
Wet space: No  
Addition: No  
Conversion: No

20 Floor 1 - Kitchen



Dimensions: 15'8" x 16'9"  
Area: 260 sq. ft  
Counted as living area: Yes

Heated: Yes  
Finished: Yes  
Enclosed: Yes  
Contiguous: Yes  
Permitted: Yes  
Wet space: No  
Addition: No  
Conversion: No

431 McGregor Point, Alburgh, Grand Isle County, Vermont,  
United States, 05440

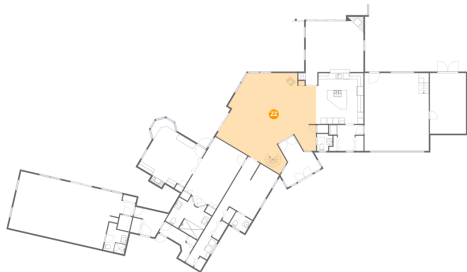
**21** Floor 1 - Bath



Dimensions: 5'11" x 4'9"  
Area: 28 sq. ft  
Counted as living area: Yes

Heated: Yes  
Finished: Yes  
Enclosed: Yes  
Contiguous: Yes  
Permitted: Yes  
Wet space: Yes  
Addition: No  
Conversion: No

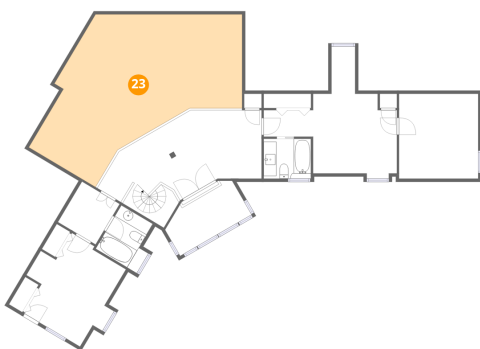
**22** Floor 1 - Living Room



Dimensions: 32'7" x 31'8"  
Area: 730 sq. ft  
Counted as living area: Yes

Heated: Yes  
Finished: Yes  
Enclosed: Yes  
Contiguous: Yes  
Permitted: Yes  
Wet space: No  
Addition: No  
Conversion: No

**23** Floor 2 - Open To Below

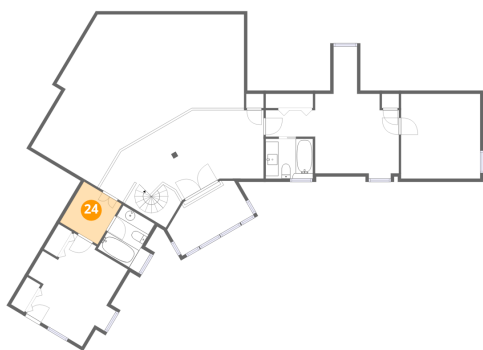


Dimensions: 29'4" x 26'11"  
Area: 550 sq. ft  
Counted as living area: No

Heated: No  
Finished: No  
Enclosed: No  
Contiguous: Yes  
Permitted: No  
Wet space: No  
Addition: No  
Conversion: No

431 McGregor Point, Alburgh, Grand Isle County, Vermont,  
United States, 05440

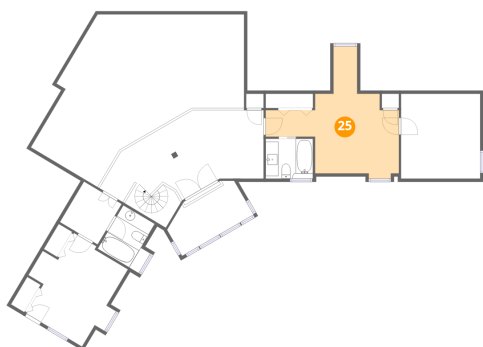
**24** Floor 2 - Hall



Dimensions: 6'10" x 7'4"  
Area: 51 sq. ft  
Counted as living area: Yes

Heated: Yes  
Finished: Yes  
Enclosed: Yes  
Contiguous: Yes  
Permitted: Yes  
Wet space: No  
Addition: No  
Conversion: No

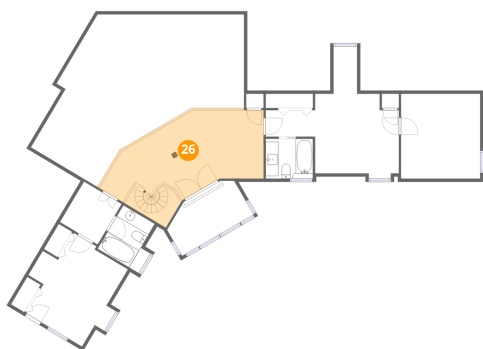
**25** Floor 2 - Bedroom



Dimensions: 20'11" x 19'10"  
Area: 218 sq. ft  
Counted as living area: Yes

Heated: Yes  
Finished: Yes  
Enclosed: Yes  
Contiguous: Yes  
Permitted: Yes  
Wet space: No  
Addition: No  
Conversion: No

**26** Floor 2 - Hall

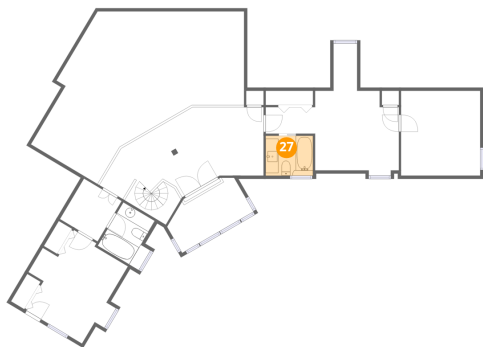


Dimensions: 27'10" x 11'6"  
Area: 289 sq. ft  
Counted as living area: Yes

Heated: Yes  
Finished: Yes  
Enclosed: Yes  
Contiguous: Yes  
Permitted: Yes  
Wet space: No  
Addition: No  
Conversion: No

431 McGregor Point, Alburgh, Grand Isle County, Vermont,  
United States, 05440

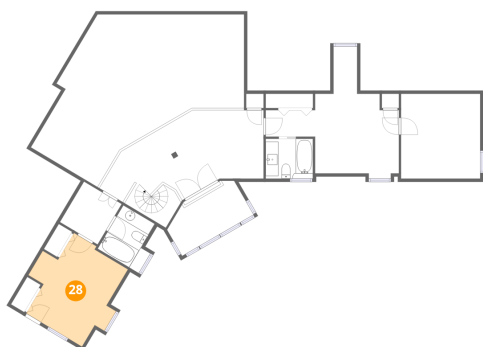
**27** Floor 2 - Bath



Dimensions: 7'5" x 6'3"  
Area: 46 sq. ft  
Counted as living area: Yes

Heated: Yes  
Finished: Yes  
Enclosed: Yes  
Contiguous: Yes  
Permitted: Yes  
Wet space: Yes  
Addition: No  
Conversion: No

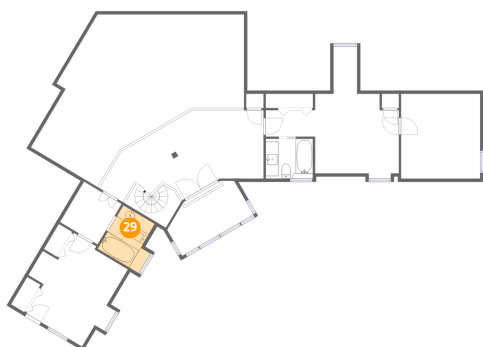
**28** Floor 2 - Bedroom



Dimensions: 14'9" x 14'8"  
Area: 164 sq. ft  
Counted as living area: Yes

Heated: Yes  
Finished: Yes  
Enclosed: Yes  
Contiguous: Yes  
Permitted: Yes  
Wet space: No  
Addition: No  
Conversion: No

**29** Floor 2 - Bath



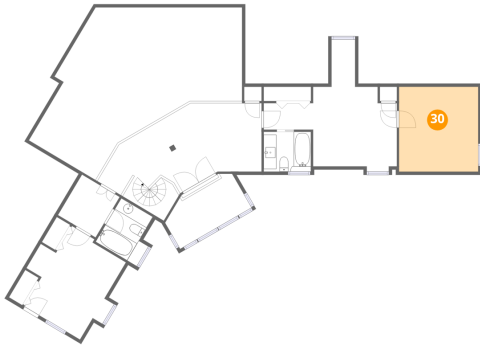
Dimensions: 7'5" x 7'11"  
Area: 52 sq. ft  
Counted as living area: Yes

Heated: Yes  
Finished: Yes  
Enclosed: Yes  
Contiguous: Yes  
Permitted: Yes  
Wet space: Yes  
Addition: No  
Conversion: No

431 McGregor Point, Alburgh, Grand Isle County, Vermont,  
United States, 05440

**30** Floor 2 - Bedroom

---

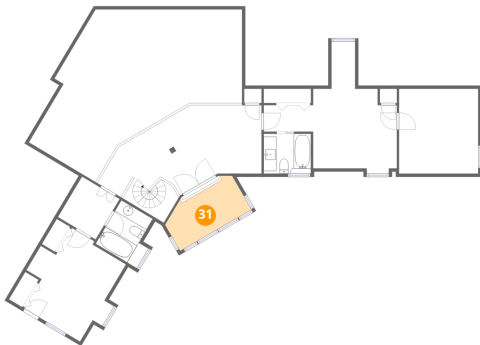


Dimensions: 12'5" x 13'3"  
Area: 165 sq. ft  
Counted as living area: Yes

Heated: Yes  
Finished: Yes  
Enclosed: Yes  
Contiguous: Yes  
Permitted: Yes  
Wet space: No  
Addition: No  
Conversion: No

**31** Floor 2 - Open To Below

---



Dimensions: 13'0" x 6'10"  
Area: 81 sq. ft  
Counted as living area: No

Heated: No  
Finished: No  
Enclosed: No  
Contiguous: Yes  
Permitted: No  
Wet space: No  
Addition: No  
Conversion: No