

820 Fox Hollow Ln, Golden, CO, US



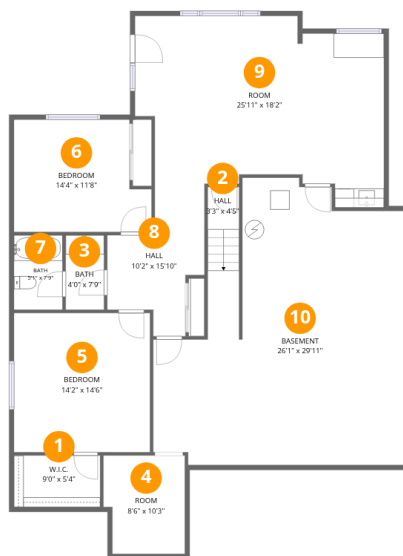
Total Area: 3057 sq. ft

Basement: 1119 sq. ft, 1st Floor: 1938 sq. ft

Excluded: Room 84 sq. ft, Basement 617 sq. ft, Garage 611 sq. ft, Balcony 135 sq. ft, Porch 78 sq. ft, Walls: 240 sq. ft

Property summary





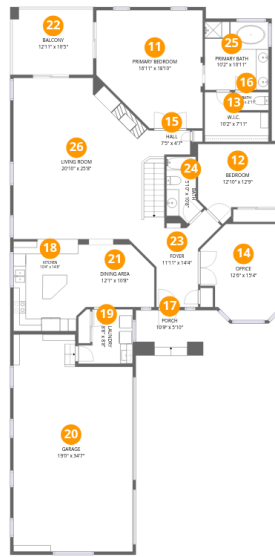
Room dimensions

Floor 1 Below grade

Total: 1119 sqft

Excluded: 701 sqft

| # | | Dimensions | sqft | Counted as living area |
|----|----------|----------------|------------|------------------------|
| 1 | W.I.C. | 9'0" x 5'4" | 48 sq. ft | Yes |
| 2 | Hall | 3'3" x 4'5" | 29 sq. ft | Yes |
| 3 | Bath | 4'0" x 7'9" | 31 sq. ft | Yes |
| 4 | Room | 8'6" x 10'3" | 83 sq. ft | No |
| 5 | Bedroom | 14'2" x 14'6" | 206 sq. ft | Yes |
| 6 | Bedroom | 14'4" x 11'8" | 151 sq. ft | Yes |
| 7 | Bath | 5'1" x 7'9" | 39 sq. ft | Yes |
| 8 | Hall | 10'2" x 15'10" | 108 sq. ft | Yes |
| 9 | Room | 25'11" x 18'2" | 428 sq. ft | Yes |
| 10 | Basement | 26'1" x 29'11" | 615 sq. ft | No |



Room dimensions

Floor 2

Total: 1938 sqft

Excluded: 824 sqft

| # | | Dimensions | sqft | Counted as living area |
|----|-----------------|-----------------|------------|------------------------|
| 11 | Primary Bedroom | 16'11" x 18'10" | 283 sq. ft | Yes |
| 12 | Bedroom | 12'10" x 12'9" | 135 sq. ft | Yes |
| 13 | W.I.C. | 10'2" x 7'11" | 62 sq. ft | Yes |
| 14 | Office | 12'6" x 15'4" | 166 sq. ft | Yes |
| 15 | Hall | 7'5" x 4'7" | 31 sq. ft | Yes |
| 16 | Bath | 5'6" x 2'11" | 16 sq. ft | Yes |
| 17 | Porch | 10'9" x 5'10" | 78 sq. ft | No |
| 18 | Kitchen | 10'4" x 14'8" | 149 sq. ft | Yes |
| 19 | Laundry | 8'8" x 8'8" | 62 sq. ft | Yes |
| 20 | Garage | 19'0" x 34'7" | 611 sq. ft | No |
| 21 | Dining Area | 12'1" x 10'8" | 118 sq. ft | Yes |

Home data report

820 Fox Hollow Ln,Golden,CO,US

| # | | Dimensions | sqft | Counted as living area |
|----|--------------|----------------|------------|------------------------|
| 22 | Balcony | 12'11" x 10'5" | 135 sq. ft | No |
| 23 | Foyer | 11'11" x 14'4" | 148 sq. ft | Yes |
| 24 | Bath | 5'10" x 10'8" | 47 sq. ft | Yes |
| 25 | Primary Bath | 10'2" x 10'11" | 111 sq. ft | Yes |
| 26 | Living Room | 20'10" x 25'8" | 508 sq. ft | Yes |

1 Floor 1 - W.I.C.



Dimensions: 9'0" x 5'4"
Area: 48 sq. ft
Counted as living area: Yes

Heated: Yes
Finished: Yes
Enclosed: Yes
Contiguous: Yes
Permitted: Yes
Wet space: No
Addition: No
Conversion: No

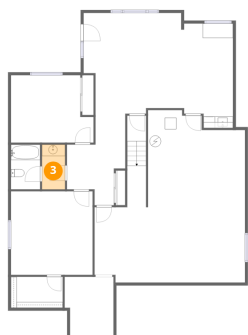
2 Floor 1 - Hall



Dimensions: 3'3" x 4'5"
Area: 29 sq. ft
Counted as living area: Yes

Heated: Yes
Finished: Yes
Enclosed: Yes
Contiguous: Yes
Permitted: Yes
Wet space: No
Addition: No
Conversion: No

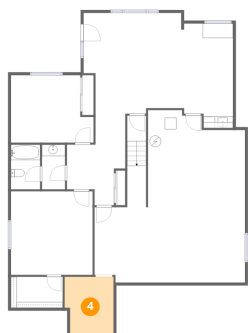
3 Floor 1 - Bath



Dimensions: 4'0" x 7'9"
Area: 31 sq. ft
Counted as living area: Yes

Heated: Yes
Finished: Yes
Enclosed: Yes
Contiguous: Yes
Permitted: Yes
Wet space: Yes
Addition: No
Conversion: No

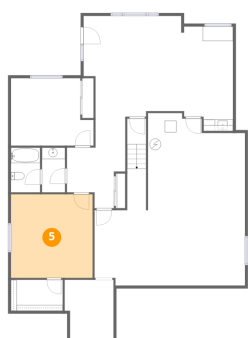
4 Floor 1 - Room



Dimensions: 8'6" x 10'3"
Area: 83 sq. ft
Counted as living area: No

Heated: Yes
Finished: No
Enclosed: Yes
Contiguous: Yes
Permitted: Yes
Wet space: No
Addition: No
Conversion: No

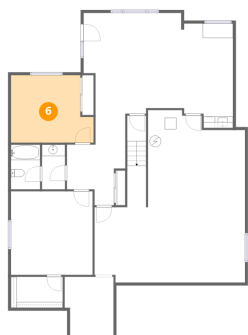
5 Floor 1 - Bedroom



Dimensions: 14'2" x 14'6"
Area: 206 sq. ft
Counted as living area: Yes

Heated: Yes
Finished: Yes
Enclosed: Yes
Contiguous: Yes
Permitted: Yes
Wet space: No
Addition: No
Conversion: No

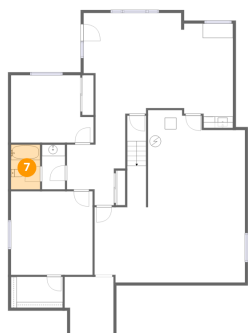
6 Floor 1 - Bedroom



Dimensions: 14'4" x 11'8"
Area: 151 sq. ft
Counted as living area: Yes

Heated: Yes
Finished: Yes
Enclosed: Yes
Contiguous: Yes
Permitted: Yes
Wet space: No
Addition: No
Conversion: No

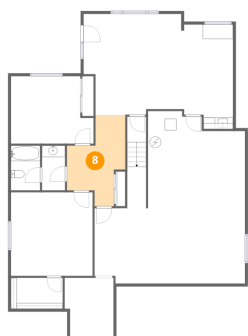
7 Floor 1 - Bath



Dimensions: 5'1" x 7'9"
Area: 39 sq. ft
Counted as living area: Yes

Heated: Yes
Finished: Yes
Enclosed: Yes
Contiguous: Yes
Permitted: Yes
Wet space: Yes
Addition: No
Conversion: No

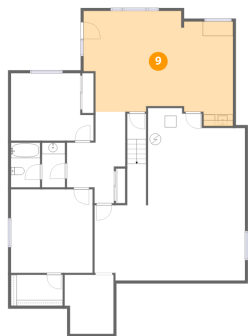
8 Floor 1 - Hall



Dimensions: 10'2" x 15'10"
Area: 108 sq. ft
Counted as living area: Yes

Heated: Yes
Finished: Yes
Enclosed: Yes
Contiguous: Yes
Permitted: Yes
Wet space: No
Addition: No
Conversion: No

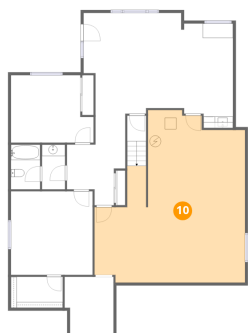
9 Floor 1 - Room



Dimensions: 25'11" x 18'2"
Area: 428 sq. ft
Counted as living area: Yes

Heated: Yes
Finished: Yes
Enclosed: Yes
Contiguous: Yes
Permitted: Yes
Wet space: No
Addition: No
Conversion: No

10 Floor 1 - Basement



Dimensions: 26'1" x 29'11"
Area: 615 sq. ft
Counted as living area: No

Heated: Yes
Finished: No
Enclosed: Yes
Contiguous: Yes
Permitted: Yes
Wet space: No
Addition: No
Conversion: No

11 Floor 2 - Primary Bedroom



Dimensions: 16'11" x 18'10"
Area: 283 sq. ft
Counted as living area: Yes

Heated: Yes
Finished: Yes
Enclosed: Yes
Contiguous: Yes
Permitted: Yes
Wet space: No
Addition: No
Conversion: No

12 Floor 2 - Bedroom



Dimensions: 12'10" x 12'9"
Area: 135 sq. ft
Counted as living area: Yes

Heated: Yes
Finished: Yes
Enclosed: Yes
Contiguous: Yes
Permitted: Yes
Wet space: No
Addition: No
Conversion: No

13 Floor 2 - W.I.C.



Dimensions: 10'2" x 7'11"
Area: 62 sq. ft
Counted as living area: Yes

Heated: Yes
Finished: Yes
Enclosed: Yes
Contiguous: Yes
Permitted: Yes
Wet space: No
Addition: No
Conversion: No

14 Floor 2 - Office



Dimensions: 12'6" x 15'4"
Area: 166 sq. ft
Counted as living area: Yes

Heated: Yes
Finished: Yes
Enclosed: Yes
Contiguous: Yes
Permitted: Yes
Wet space: No
Addition: No
Conversion: No

15 Floor 2 - Hall



Dimensions: 7'5" x 4'7"
Area: 31 sq. ft
Counted as living area: Yes

Heated: Yes
Finished: Yes
Enclosed: Yes
Contiguous: Yes
Permitted: Yes
Wet space: No
Addition: No
Conversion: No

16 Floor 2 - Bath



Dimensions: 5'6" x 2'11"
Area: 16 sq. ft
Counted as living area: Yes

Heated: Yes
Finished: Yes
Enclosed: Yes
Contiguous: Yes
Permitted: Yes
Wet space: Yes
Addition: No
Conversion: No

17 Floor 2 - Porch



Dimensions: 10'9" x 5'10"
Area: 78 sq. ft
Counted as living area: No

Heated: No
Finished: No
Enclosed: No
Contiguous: Yes
Permitted: Yes
Wet space: No
Addition: No
Conversion: No

18 Floor 2 - Kitchen



Dimensions: 10'4" x 14'8"
Area: 149 sq. ft
Counted as living area: Yes

Heated: Yes
Finished: Yes
Enclosed: Yes
Contiguous: Yes
Permitted: Yes
Wet space: No
Addition: No
Conversion: No

19 Floor 2 - Laundry



Dimensions: 8'8" x 8'8"
Area: 62 sq. ft
Counted as living area: Yes

Heated: Yes
Finished: Yes
Enclosed: Yes
Contiguous: Yes
Permitted: Yes
Wet space: No
Addition: No
Conversion: No

20 Floor 2 - Garage



Dimensions: 19'0" x 34'7"
Area: 611 sq. ft
Counted as living area: No

Heated: No
Finished: No
Enclosed: Yes
Contiguous: Yes
Permitted: Yes
Wet space: No
Addition: No
Conversion: No

21 Floor 2 - Dining Area



Dimensions: 12'1" x 10'8"
Area: 118 sq. ft
Counted as living area: Yes

Heated: Yes
Finished: Yes
Enclosed: Yes
Contiguous: Yes
Permitted: Yes
Wet space: No
Addition: No
Conversion: No

22 Floor 2 - Balcony



Dimensions: 12'11" x 10'5"
Area: 135 sq. ft
Counted as living area: No

Heated: No
Finished: No
Enclosed: No
Contiguous: Yes
Permitted: Yes
Wet space: No
Addition: No
Conversion: No

23 Floor 2 - Foyer



Dimensions: 11'11" x 14'4"
Area: 148 sq. ft
Counted as living area: Yes

Heated: Yes
Finished: Yes
Enclosed: Yes
Contiguous: Yes
Permitted: Yes
Wet space: No
Addition: No
Conversion: No

24 Floor 2 - Bath



Dimensions: 5'10" x 10'8"
Area: 47 sq. ft
Counted as living area: Yes

Heated: Yes
Finished: Yes
Enclosed: Yes
Contiguous: Yes
Permitted: Yes
Wet space: Yes
Addition: No
Conversion: No

25 Floor 2 - Primary Bath



Dimensions: 10'2" x 10'11"
Area: 111 sq. ft
Counted as living area: Yes

Heated: Yes
Finished: Yes
Enclosed: Yes
Contiguous: Yes
Permitted: Yes
Wet space: Yes
Addition: No
Conversion: No

26 Floor 2 - Living Room



Dimensions: 20'10" x 25'8"
Area: 508 sq. ft
Counted as living area: Yes

Heated: Yes
Finished: Yes
Enclosed: Yes
Contiguous: Yes
Permitted: Yes
Wet space: No
Addition: No
Conversion: No