


Home data report


1049 San Marcos Court, Moneta, Bedford County, Virginia,
United States, 24121





Total Area: 3676 sq. ft
1st Floor: 1783 sq. ft, 2nd Floor: 1893 sq. ft
Excluded: Porch 213 sq. ft, Garage 447 sq. ft, Deck 135 sq. ft, Walls: 205 sq. ft

Property summary

 **2** Floors

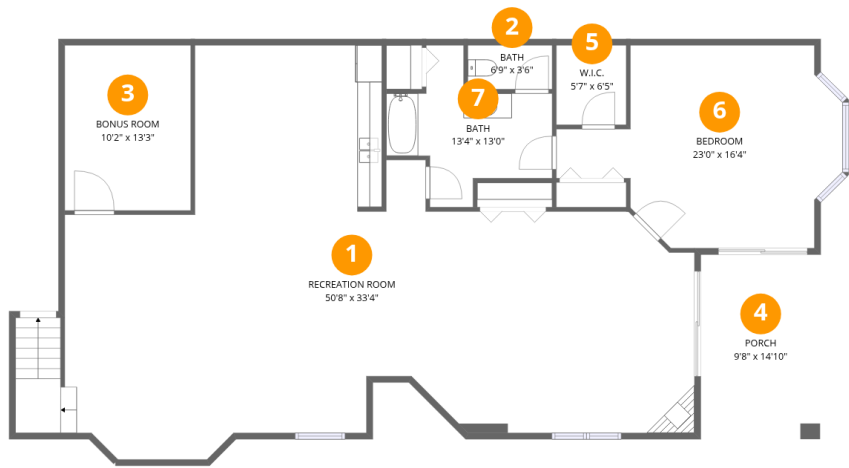
 **4** Bedrooms

 **3** Bathrooms

 **1** Garages

Home data report

1049 San Marcos Court, Moneta, Bedford County, Virginia,
United States, 24121



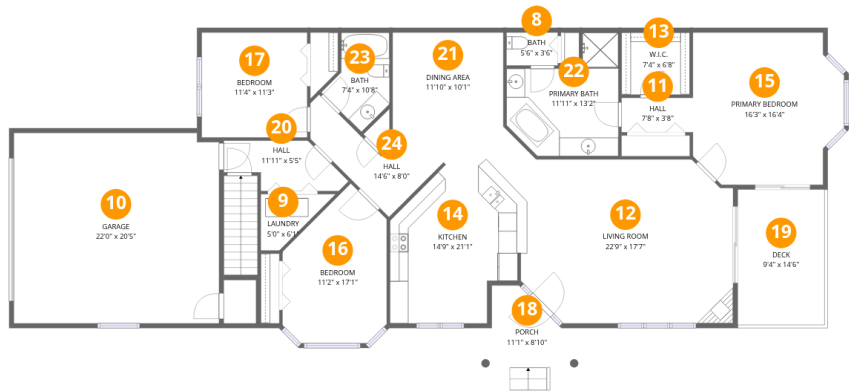
Room dimensions

Floor 1 Total:1783sqft Excluded: 143sqft

#		Dimensions	sqft	Counted as living area
1	Recreation Room	50'8" x 33'4"	1686 sq. ft	Yes
2	Bath	6'9" x 3'6"	24 sq. ft	Yes
3	Bonus Room	10'2" x 13'3"	135 sq. ft	Yes
4	Porch	9'8" x 14'10"	143 sq. ft	No
5	W.I.C.	5'7" x 6'5"	36 sq. ft	Yes
6	Bedroom	23'0" x 16'4"	376 sq. ft	Yes
7	Bath	13'4" x 13'0"	174 sq. ft	Yes

Home data report

1049 San Marcos Court, Moneta, Bedford County, Virginia,
United States, 24121



Room dimensions

Floor 2 Total:1893sqft Excluded: 652sqft

#		Dimensions	sqft	Counted as living area
8	Bath	5'6" x 3'6"	19 sq. ft	Yes
9	Laundry	5'0" x 6'1"	30 sq. ft	Yes
10	Garage	22'0" x 20'5"	448 sq. ft	No
11	Hall	7'8" x 3'8"	28 sq. ft	Yes
12	Living Room	22'9" x 17'7"	400 sq. ft	Yes
13	W.I.C.	7'4" x 6'8"	49 sq. ft	Yes
14	Kitchen	14'9" x 21'1"	310 sq. ft	Yes
15	Primary Bedroom	16'3" x 16'4"	265 sq. ft	Yes
16	Bedroom	11'2" x 17'1"	191 sq. ft	Yes
17	Bedroom	11'4" x 11'3"	127 sq. ft	Yes
18	Porch	11'1" x 8'10"	97 sq. ft	No

Home data report

**1049 San Marcos Court, Moneta, Bedford County, Virginia,
United States, 24121**

#		Dimensions	sqft	Counted as living area
19	Deck	9'4" x 14'6"	135 sq. ft	No
20	Hall	11'11" x 5'5"	64 sq. ft	Yes
21	Dining Area	11'10" x 10'1"	119 sq. ft	Yes
22	Primary Bath	11'11" x 13'2"	157 sq. ft	Yes
23	Bath	7'4" x 10'8"	78 sq. ft	Yes
24	Hall	14'6" x 8'0"	116 sq. ft	Yes

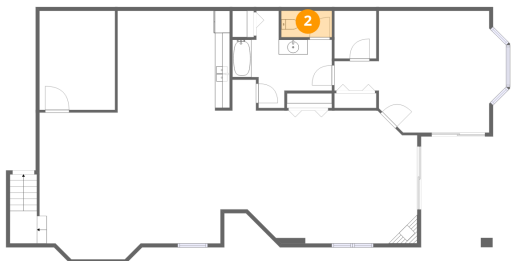
1 Floor 1 - Recreation Room



Dimensions: 50'8" x 33'4"
Area: 1686 sq. ft
Counted as living area: Yes

Heated: Yes
Finished: Yes
Enclosed: Yes
Contiguous: Yes
Permitted: Yes
Wet space: No
Addition: No
Conversion: No

2 Floor 1 - Bath

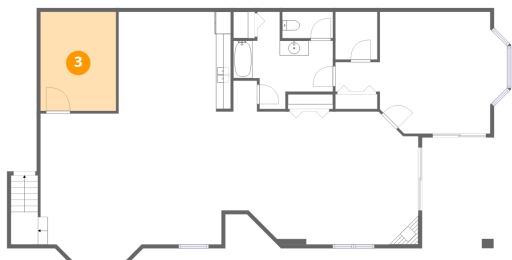


Dimensions: 6'9" x 3'6"
Area: 24 sq. ft
Counted as living area: Yes

Heated: Yes
Finished: Yes
Enclosed: Yes
Contiguous: Yes
Permitted: Yes
Wet space: Yes
Addition: No
Conversion: No

1049 San Marcos Court, Moneta, Bedford County, Virginia,
United States, 24121

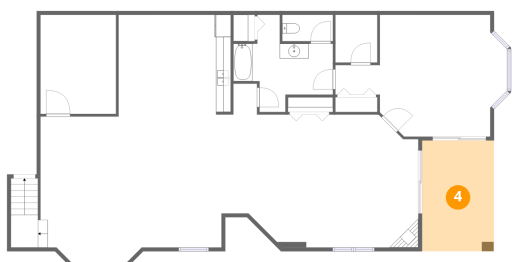
3 Floor 1 - Bonus Room



Dimensions: 10'2" x 13'3"
Area: 135 sq. ft
Counted as living area: Yes

Heated: Yes
Finished: Yes
Enclosed: Yes
Contiguous: Yes
Permitted: Yes
Wet space: No
Addition: No
Conversion: No

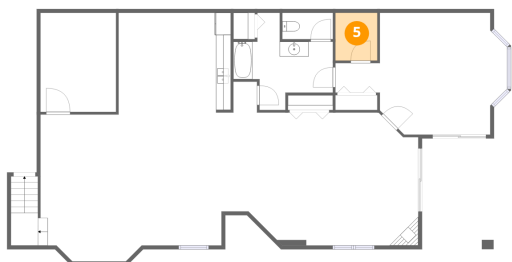
4 Floor 1 - Porch



Dimensions: 9'8" x 14'10"
Area: 143 sq. ft
Counted as living area: No

Heated: No
Finished: No
Enclosed: No
Contiguous: Yes
Permitted: Yes
Wet space: No
Addition: No
Conversion: No

5 Floor 1 - W.I.C.



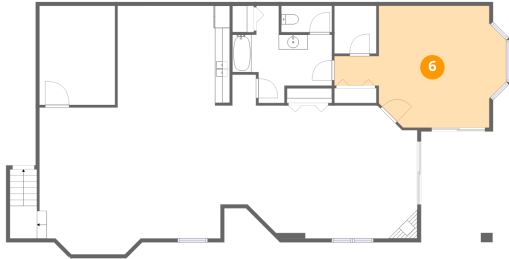
Dimensions: 5'7" x 6'5"
Area: 36 sq. ft
Counted as living area: Yes

Heated: Yes
Finished: Yes
Enclosed: Yes
Contiguous: Yes
Permitted: Yes
Wet space: No
Addition: No
Conversion: No

Home data report

1049 San Marcos Court, Moneta, Bedford County, Virginia,
United States, 24121

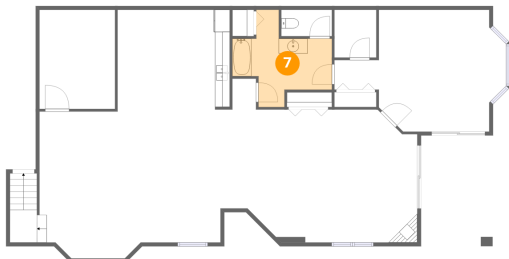
6 Floor 1 - Bedroom



Dimensions: 23'0" x 16'4"
Area: 376 sq. ft
Counted as living area: Yes

Heated: Yes
Finished: Yes
Enclosed: Yes
Contiguous: Yes
Permitted: Yes
Wet space: No
Addition: No
Conversion: No

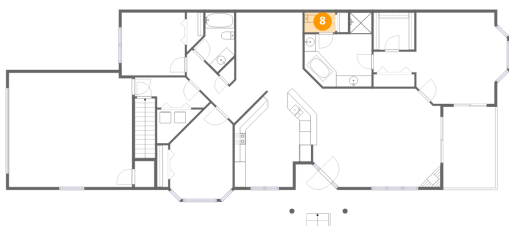
7 Floor 1 - Bath



Dimensions: 13'4" x 13'0"
Area: 174 sq. ft
Counted as living area: Yes

Heated: Yes
Finished: Yes
Enclosed: Yes
Contiguous: Yes
Permitted: Yes
Wet space: Yes
Addition: No
Conversion: No

8 Floor 2 - Bath

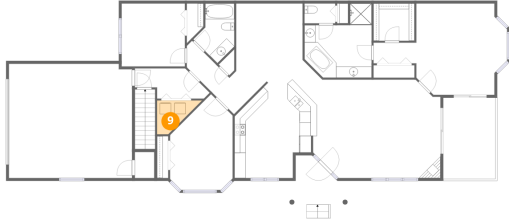


Dimensions: 5'6" x 3'6"
Area: 19 sq. ft
Counted as living area: Yes

Heated: Yes
Finished: Yes
Enclosed: Yes
Contiguous: Yes
Permitted: Yes
Wet space: Yes
Addition: No
Conversion: No

1049 San Marcos Court, Moneta, Bedford County, Virginia,
United States, 24121

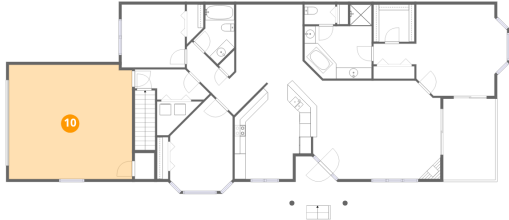
9 Floor 2 - Laundry



Dimensions: 5'0" x 6'1"
Area: 30 sq. ft
Counted as living area: Yes

Heated: Yes
Finished: Yes
Enclosed: Yes
Contiguous: Yes
Permitted: Yes
Wet space: No
Addition: No
Conversion: No

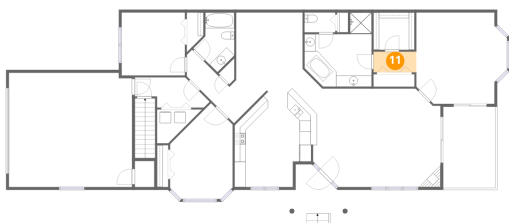
10 Floor 2 - Garage



Dimensions: 22'0" x 20'5"
Area: 448 sq. ft
Counted as living area: No

Heated: No
Finished: No
Enclosed: Yes
Contiguous: Yes
Permitted: Yes
Wet space: No
Addition: No
Conversion: No

11 Floor 2 - Hall

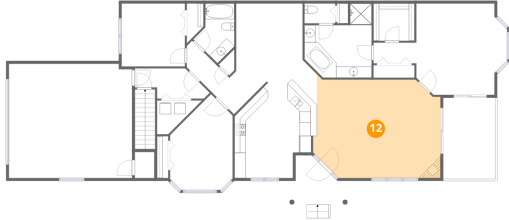


Dimensions: 7'8" x 3'8"
Area: 28 sq. ft
Counted as living area: Yes

Heated: Yes
Finished: Yes
Enclosed: Yes
Contiguous: Yes
Permitted: Yes
Wet space: No
Addition: No
Conversion: No

1049 San Marcos Court, Moneta, Bedford County, Virginia,
United States, 24121

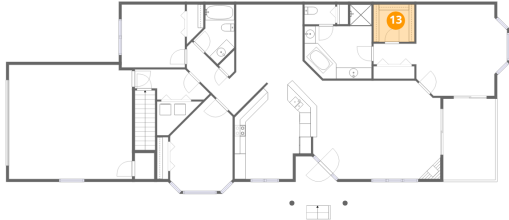
12 Floor 2 - Living Room



Dimensions: 22'9" x 17'7"
Area: 400 sq. ft
Counted as living area: Yes

Heated: Yes
Finished: Yes
Enclosed: Yes
Contiguous: Yes
Permitted: Yes
Wet space: No
Addition: No
Conversion: No

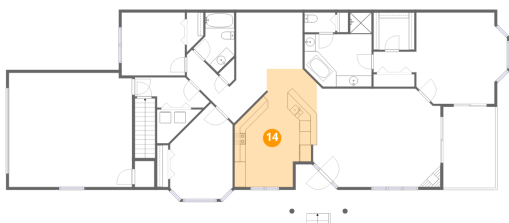
13 Floor 2 - W.I.C.



Dimensions: 7'4" x 6'8"
Area: 49 sq. ft
Counted as living area: Yes

Heated: Yes
Finished: Yes
Enclosed: Yes
Contiguous: Yes
Permitted: Yes
Wet space: No
Addition: No
Conversion: No

14 Floor 2 - Kitchen

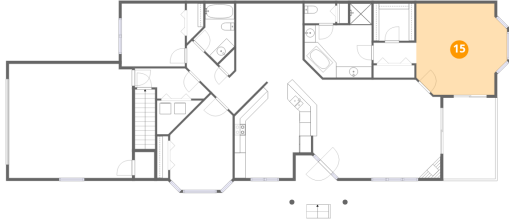


Dimensions: 14'9" x 21'1"
Area: 310 sq. ft
Counted as living area: Yes

Heated: Yes
Finished: Yes
Enclosed: Yes
Contiguous: Yes
Permitted: Yes
Wet space: No
Addition: No
Conversion: No

1049 San Marcos Court, Moneta, Bedford County, Virginia,
United States, 24121

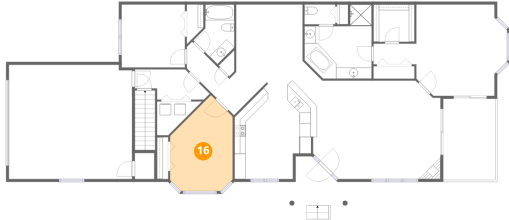
15 Floor 2 - Primary Bedroom



Dimensions: 16'3" x 16'4"
Area: 265 sq. ft
Counted as living area: Yes

Heated: Yes
Finished: Yes
Enclosed: Yes
Contiguous: Yes
Permitted: Yes
Wet space: No
Addition: No
Conversion: No

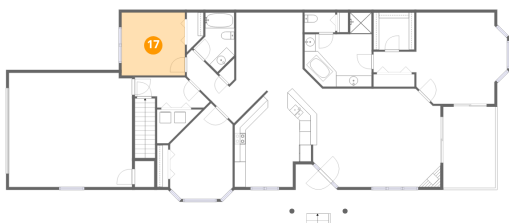
16 Floor 2 - Bedroom



Dimensions: 11'2" x 17'1"
Area: 191 sq. ft
Counted as living area: Yes

Heated: Yes
Finished: Yes
Enclosed: Yes
Contiguous: Yes
Permitted: Yes
Wet space: No
Addition: No
Conversion: No

17 Floor 2 - Bedroom

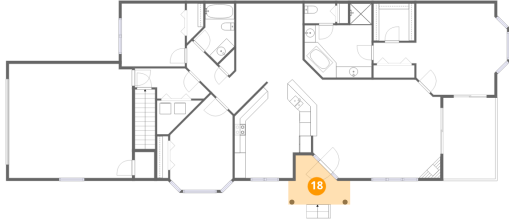


Dimensions: 11'4" x 11'3"
Area: 127 sq. ft
Counted as living area: Yes

Heated: Yes
Finished: Yes
Enclosed: Yes
Contiguous: Yes
Permitted: Yes
Wet space: No
Addition: No
Conversion: No

1049 San Marcos Court, Moneta, Bedford County, Virginia,
United States, 24121

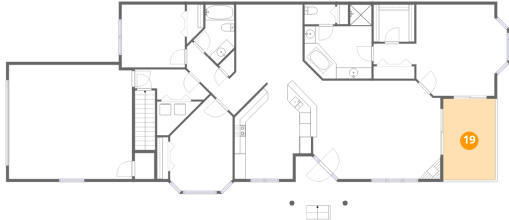
18 Floor 2 - Porch



Dimensions: 11'1" x 8'10"
Area: 97 sq. ft
Counted as living area: No

Heated: No
Finished: No
Enclosed: No
Contiguous: Yes
Permitted: Yes
Wet space: No
Addition: No
Conversion: No

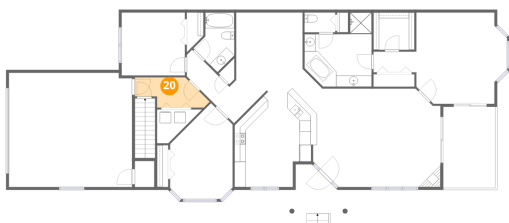
19 Floor 2 - Deck



Dimensions: 9'4" x 14'6"
Area: 135 sq. ft
Counted as living area: No

Heated: No
Finished: No
Enclosed: No
Contiguous: No
Permitted: Yes
Wet space: No
Addition: No
Conversion: No

20 Floor 2 - Hall

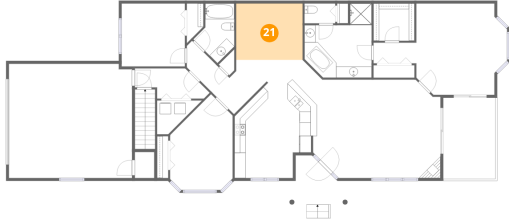


Dimensions: 11'11" x 5'5"
Area: 64 sq. ft
Counted as living area: Yes

Heated: Yes
Finished: Yes
Enclosed: Yes
Contiguous: Yes
Permitted: Yes
Wet space: No
Addition: No
Conversion: No

1049 San Marcos Court, Moneta, Bedford County, Virginia,
United States, 24121

21 Floor 2 - Dining Area



Dimensions: 11'10" x 10'1"
Area: 119 sq. ft
Counted as living area: Yes

Heated: Yes
Finished: Yes
Enclosed: Yes
Contiguous: Yes
Permitted: Yes
Wet space: No
Addition: No
Conversion: No

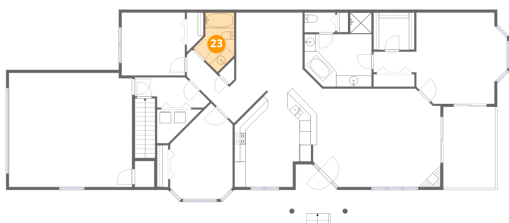
22 Floor 2 - Primary Bath



Dimensions: 11'11" x 13'2"
Area: 157 sq. ft
Counted as living area: Yes

Heated: Yes
Finished: Yes
Enclosed: Yes
Contiguous: Yes
Permitted: Yes
Wet space: Yes
Addition: No
Conversion: No

23 Floor 2 - Bath



Dimensions: 7'4" x 10'8"
Area: 78 sq. ft
Counted as living area: Yes

Heated: Yes
Finished: Yes
Enclosed: Yes
Contiguous: Yes
Permitted: Yes
Wet space: Yes
Addition: No
Conversion: No

24 Floor 2 - Hall



Dimensions: 14'6" x 8'0"
Area: 116 sq. ft
Counted as living area: Yes

Heated: Yes
Finished: Yes
Enclosed: Yes
Contiguous: Yes
Permitted: Yes
Wet space: No
Addition: No
Conversion: No