

10234 Tintinhull Drive, Fort Mill, Lancaster County, South Carolina, United States, 29707

Gross Living Area: 2208 sq. ft

Level 1



| Space | Area (sq. ft) | Calculation |
|----------------------------|---------------|--|
| 1st floor (Living area) | 1880 | Coordinate Polygon Area Algorithm using inches $-((568.5 + 568.5) * (0.5 - 145) + (568.5 + 604.7) * (145 - 145) + (604.7 + 604.7) * (145 - 445.1) + (604.7 + 504.3) * (445.1 - 445.1) + (504.3 + 504.3) * (445.1 - 485.3) + (504.3 + 368.5) * (485.3 - 485.3) + (368.5 + 368.5) * (485.3 - 536.7) + (368.5 + 362.5) * (536.7 - 536.7) + (362.5 + 362.5) * (536.7 - 542.7) + (362.5 + 303.5) * (542.7 - 542.7) + (303.5 + 303.5) * (542.7 - 606.9) + (303.5 + 150.4) * (606.9 - 606.9) + (150.4 + 150.4) * (606.9 - 618.7) + (150.4 + -2.9) * (618.7 - 618.7) + (-2.9 + -2.9) * (618.7 - 145) + (-2.9 + 394) * (145 - 145) + (394 + 394) * (145 - 0.5) + (394 + 568.5) * (0.5 - 0.5)) * 0.5 * 0.00694$ |

10234 Tintinhull Drive, Fort Mill, Lancaster County, South Carolina, United States, 29707

Gross Living Area: 2208 sq. ft

Level 1

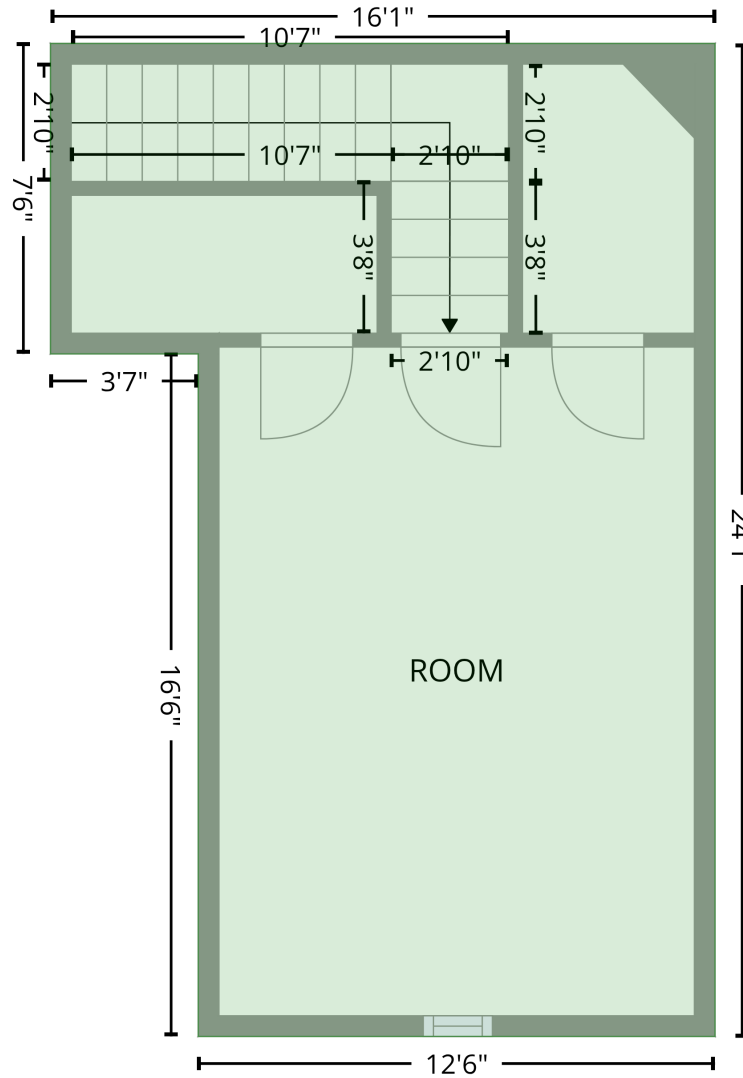
| Space | Area (sq. ft) | Calculation <small>Coordinate Polygon Area Algorithm using inches</small> |
|-----------------------------|---------------|---|
| GARAGE (Non-living area) | 434 | $-\left((604.7 + 604.7) * (445.1 - 727.8) + (604.7 + 362.5) * (727.8 - 727.8) + (362.5 + 362.5) * (727.8 - 536.7) + (362.5 + 368.5) * (536.7 - 536.7) + (368.5 + 368.5) * (536.7 - 485.3) + (368.5 + 504.3) * (485.3 - 485.3) + (504.3 + 504.3) * (485.3 - 445.1) + (504.3 + 604.7) * (445.1 - 445.1)\right) * 0.5 * 0.00694$ |
| DECK (Non-living area) | 142 | $-\left((394 + 394) * (4.5 - 145) + (394 + 275.6) * (145 - 145) + (275.6 + 275.6) * (145 - 44.6) + (275.6 + 181.9) * (44.6 - 44.6) + (181.9 + 181.9) * (44.6 - 4.5) + (181.9 + 394) * (4.5 - 4.5)\right) * 0.5 * 0.00694$ |

10234 Tintinhull Drive, Fort Mill, Lancaster County, South Carolina, United States, 29707

Gross Living Area: 2208 sq. ft

Level 2

2nd floor
[AREA: 328]



| Space | Area (sq. ft) | Calculation <small>Coordinate Polygon Area Algorithm using inches</small> |
|----------------------------|---------------|--|
| 2nd floor (Living area) | 328 | $-((555.5 + 555.5) * (439.1 - 727.8) + (555.5 + 405.4) * (727.8 - 727.8) + (405.4 + 405.4) * (727.8 - 529.4) + (405.4 + 362.5) * (529.4 - 529.4) + (362.5 + 362.5) * (529.4 - 439.1) + (362.5 + 555.5) * (439.1 - 439.1)) * 0.5 * 0.00694$ |