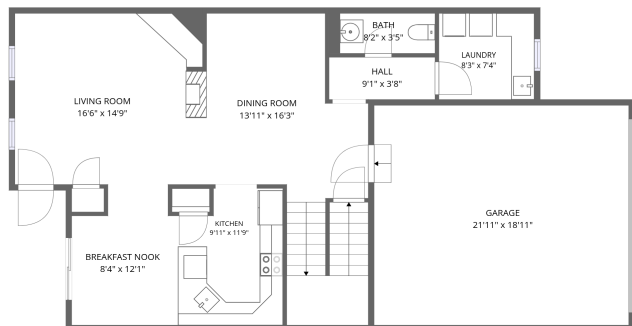
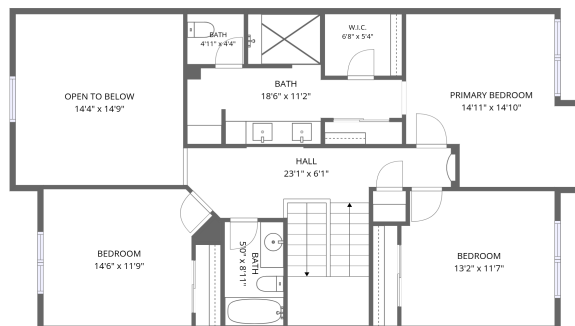


# Home data report

## 12713 W Bowles Pl, Littleton, CO, US



1st floor



2nd floor



Basement

**Total Area: 1881 sq. ft**

Basement: 0 sq. ft, 1st Floor: 863 sq. ft, 2nd Floor: 1018 sq. ft

Excluded: Basement 757 sq. ft, Garage 415 sq. ft, Open to below 212 sq. ft, Walls: 169 sq. ft

## Property summary



**3** Floors



**3** Bedrooms



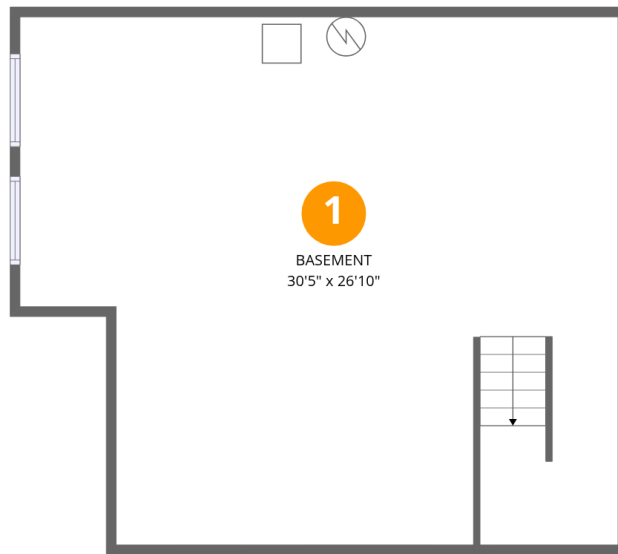
**2** Bathrooms

Home data report

**12713 W Bowles Pl, Littleton, CO, US**

 **1**  
Half baths

 **1**  
Garages



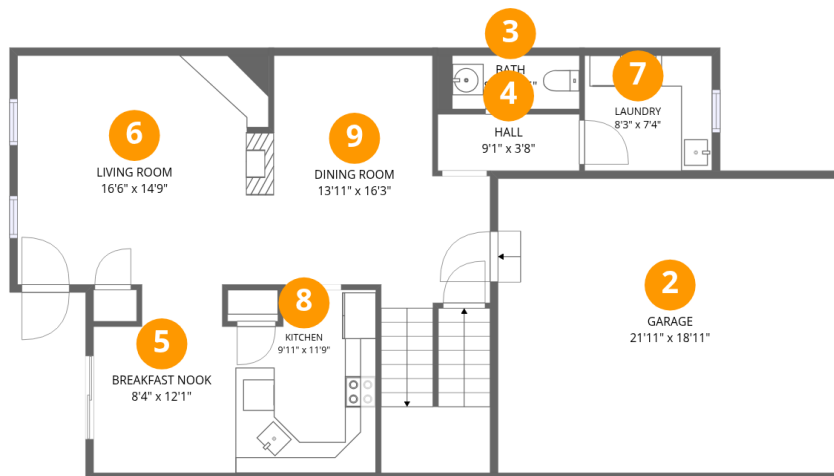
## Room dimensions

Floor 1 Below grade

Total: 0 sqft

Excluded: 757 sqft

#		Dimensions	sqft	Counted as living area
1	Basement	30'5" x 26'10"	753 sq. ft	No

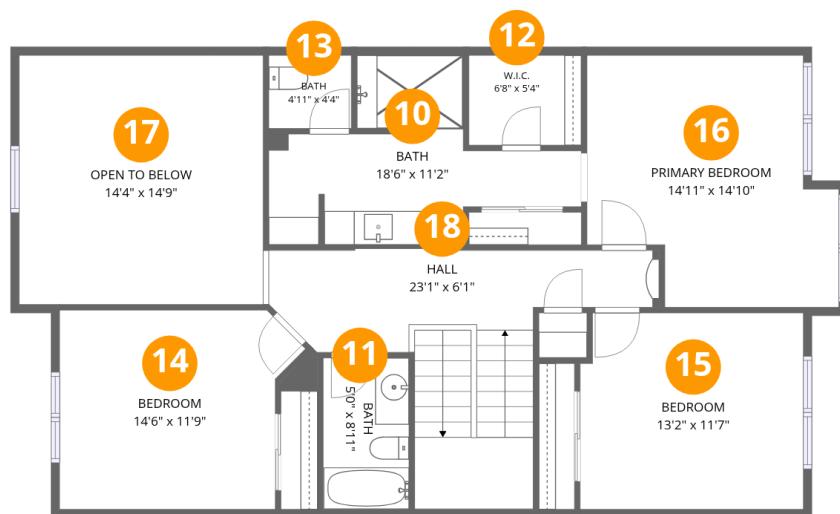


## Room dimensions

Floor 2

Total:863sqft Excluded: 415sqft

#		Dimensions	sqft	Counted as living area
2	Garage	21'11" x 18'11"	415 sq. ft	No
3	Bath	8'2" x 3'5"	31 sq. ft	Yes
4	Hall	9'1" x 3'8"	33 sq. ft	Yes
5	Breakfast Nook	8'4" x 12'1"	92 sq. ft	Yes
6	Living Room	16'6" x 14'9"	241 sq. ft	Yes
7	Laundry	8'3" x 7'4"	61 sq. ft	Yes
8	Kitchen	9'11" x 11'9"	107 sq. ft	Yes
9	Dining Room	13'11" x 16'3"	258 sq. ft	Yes



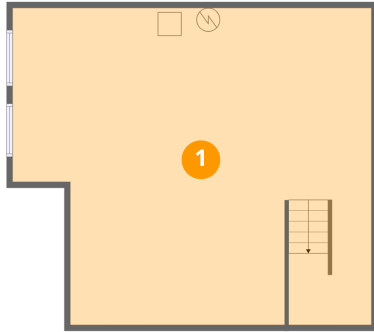
## Room dimensions

Floor 3

Total: 1018 sqft Excluded: 212 sqft

#		Dimensions	sqft	Counted as living area
10	Bath	18'6" x 11'2"	125 sq. ft	Yes
11	Bath	5'0" x 8'11"	45 sq. ft	Yes
12	W.I.C.	6'8" x 5'4"	35 sq. ft	Yes
13	Bath	4'11" x 4'4"	21 sq. ft	Yes
14	Bedroom	14'6" x 11'9"	153 sq. ft	Yes
15	Bedroom	13'2" x 11'7"	151 sq. ft	Yes
16	Primary Bedroom	14'11" x 14'10"	188 sq. ft	Yes
17	Open To Below	14'4" x 14'9"	212 sq. ft	No
18	Hall	23'1" x 6'1"	182 sq. ft	Yes

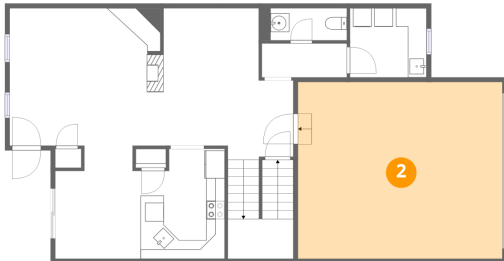
## 1 Floor 1 - Basement



Dimensions: 30'5" x 26'10"  
Area: 753 sq. ft  
Counted as living area: No

Heated: Yes  
Finished: No  
Enclosed: Yes  
Contiguous: Yes  
Permitted: Yes  
Wet space: No  
Addition: No  
Conversion: No

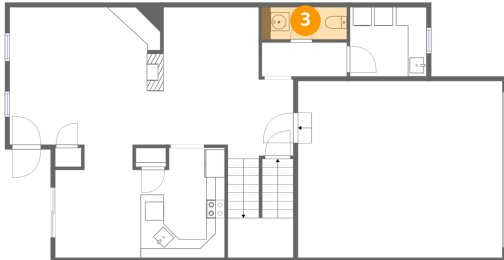
## 2 Floor 2 - Garage



Dimensions: 21'11" x 18'11"  
Area: 415 sq. ft  
Counted as living area: No

Heated: No  
Finished: No  
Enclosed: Yes  
Contiguous: Yes  
Permitted: Yes  
Wet space: No  
Addition: No  
Conversion: No

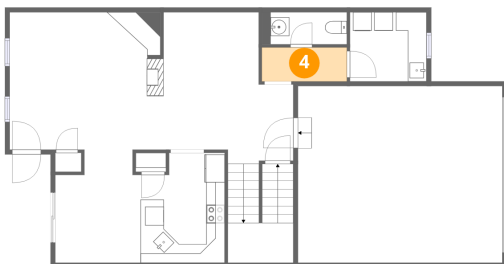
### 3 Floor 2 - Bath



Dimensions: 8'2" x 3'5"  
Area: 31 sq. ft  
Counted as living area: Yes

Heated: Yes  
Finished: Yes  
Enclosed: Yes  
Contiguous: Yes  
Permitted: Yes  
Wet space: Yes  
Addition: No  
Conversion: No

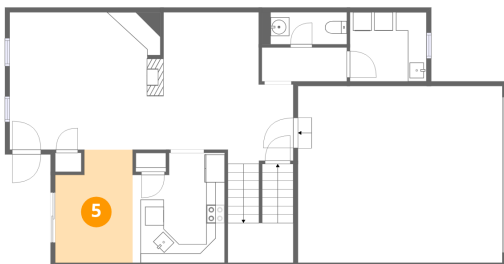
### 4 Floor 2 - Hall



Dimensions: 9'1" x 3'8"  
Area: 33 sq. ft  
Counted as living area: Yes

Heated: Yes  
Finished: Yes  
Enclosed: Yes  
Contiguous: Yes  
Permitted: Yes  
Wet space: No  
Addition: No  
Conversion: No

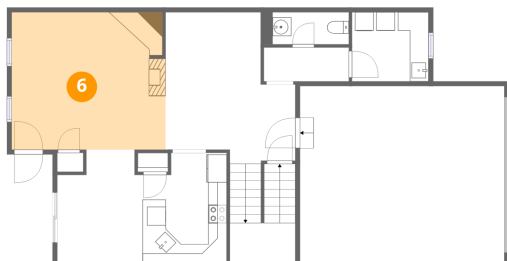
### 5 Floor 2 - Breakfast Nook



Dimensions: 8'4" x 12'1"  
Area: 92 sq. ft  
Counted as living area: Yes

Heated: Yes  
Finished: Yes  
Enclosed: Yes  
Contiguous: Yes  
Permitted: Yes  
Wet space: No  
Addition: No  
Conversion: No

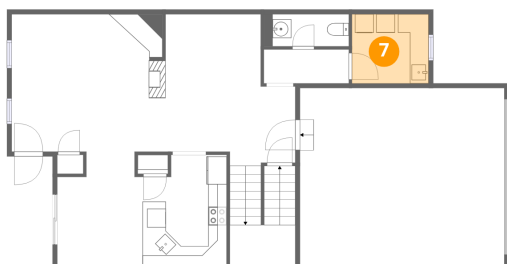
## 6 Floor 2 - Living Room



Dimensions: 16'6" x 14'9"  
Area: 241 sq. ft  
Counted as living area: Yes

Heated: Yes  
Finished: Yes  
Enclosed: Yes  
Contiguous: Yes  
Permitted: Yes  
Wet space: No  
Addition: No  
Conversion: No

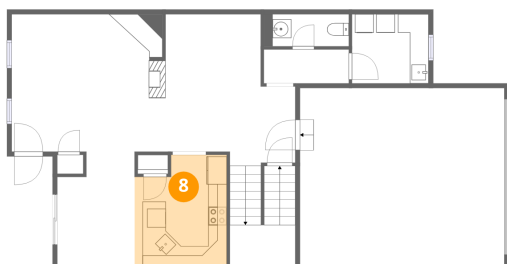
## 7 Floor 2 - Laundry



Dimensions: 8'3" x 7'4"  
Area: 61 sq. ft  
Counted as living area: Yes

Heated: Yes  
Finished: Yes  
Enclosed: Yes  
Contiguous: Yes  
Permitted: Yes  
Wet space: No  
Addition: No  
Conversion: No

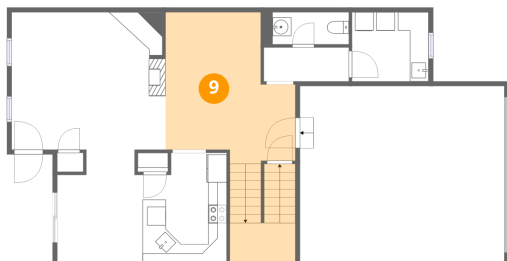
## 8 Floor 2 - Kitchen



Dimensions: 9'11" x 11'9"  
Area: 107 sq. ft  
Counted as living area: Yes

Heated: Yes  
Finished: Yes  
Enclosed: Yes  
Contiguous: Yes  
Permitted: Yes  
Wet space: No  
Addition: No  
Conversion: No

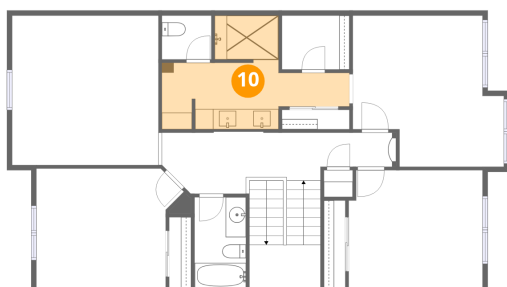
### 9 Floor 2 - Dining Room



Dimensions: 13'11" x 16'3"  
Area: 258 sq. ft  
Counted as living area: Yes

Heated: Yes  
Finished: Yes  
Enclosed: Yes  
Contiguous: Yes  
Permitted: Yes  
Wet space: No  
Addition: No  
Conversion: No

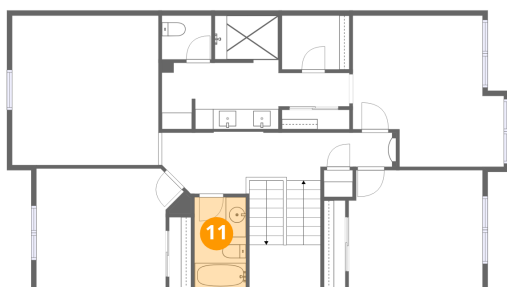
### 10 Floor 3 - Bath



Dimensions: 18'6" x 11'2"  
Area: 125 sq. ft  
Counted as living area: Yes

Heated: Yes  
Finished: Yes  
Enclosed: Yes  
Contiguous: Yes  
Permitted: Yes  
Wet space: Yes  
Addition: No  
Conversion: No

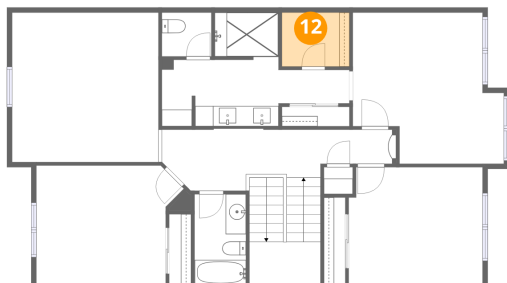
### 11 Floor 3 - Bath



Dimensions: 5'0" x 8'11"  
Area: 45 sq. ft  
Counted as living area: Yes

Heated: Yes  
Finished: Yes  
Enclosed: Yes  
Contiguous: Yes  
Permitted: Yes  
Wet space: Yes  
Addition: No  
Conversion: No

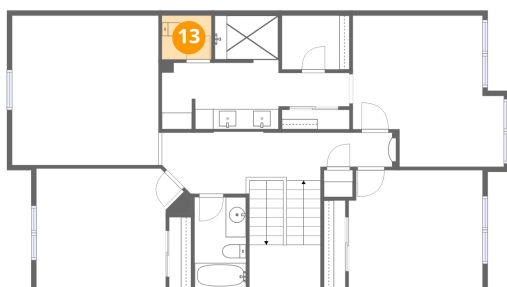
**12** Floor 3 - W.I.C.



Dimensions: 6'8" x 5'4"  
Area: 35 sq. ft  
Counted as living area: Yes

Heated: Yes  
Finished: Yes  
Enclosed: Yes  
Contiguous: Yes  
Permitted: Yes  
Wet space: No  
Addition: No  
Conversion: No

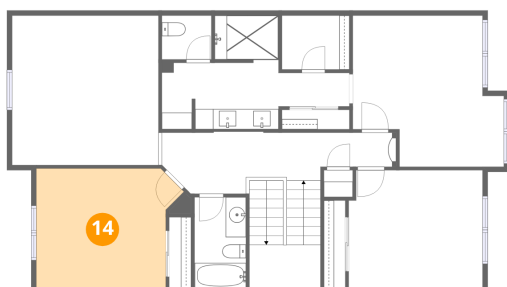
**13** Floor 3 - Bath



Dimensions: 4'11" x 4'4"  
Area: 21 sq. ft  
Counted as living area: Yes

Heated: Yes  
Finished: Yes  
Enclosed: Yes  
Contiguous: Yes  
Permitted: Yes  
Wet space: Yes  
Addition: No  
Conversion: No

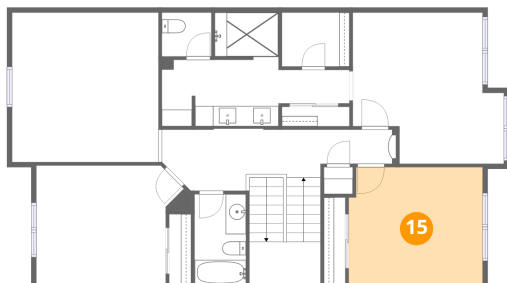
**14** Floor 3 - Bedroom



Dimensions: 14'6" x 11'9"  
Area: 153 sq. ft  
Counted as living area: Yes

Heated: Yes  
Finished: Yes  
Enclosed: Yes  
Contiguous: Yes  
Permitted: Yes  
Wet space: No  
Addition: No  
Conversion: No

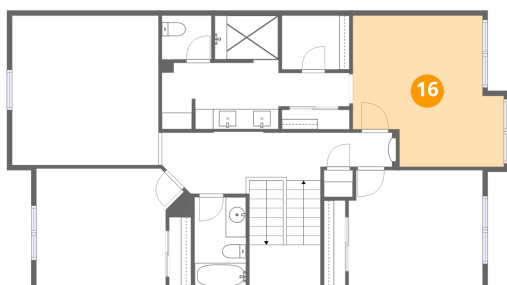
**15** Floor 3 - Bedroom



Dimensions: 13'2" x 11'7"  
Area: 151 sq. ft  
Counted as living area: Yes

Heated: Yes  
Finished: Yes  
Enclosed: Yes  
Contiguous: Yes  
Permitted: Yes  
Wet space: No  
Addition: No  
Conversion: No

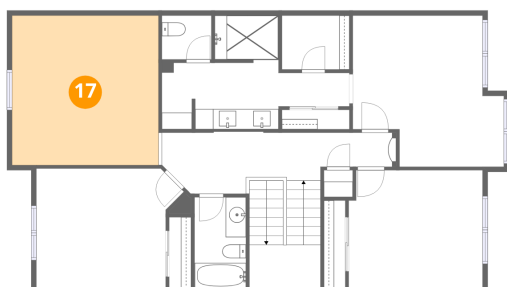
**16** Floor 3 - Primary Bedroom



Dimensions: 14'11" x 14'10"  
Area: 188 sq. ft  
Counted as living area: Yes

Heated: Yes  
Finished: Yes  
Enclosed: Yes  
Contiguous: Yes  
Permitted: Yes  
Wet space: No  
Addition: No  
Conversion: No

**17** Floor 3 - Open To Below

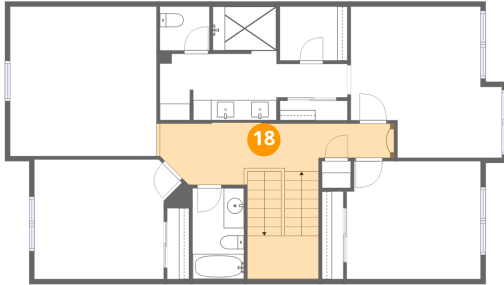


Dimensions: 14'4" x 14'9"  
Area: 212 sq. ft  
Counted as living area: No

Heated: No  
Finished: No  
Enclosed: No  
Contiguous: Yes  
Permitted: No  
Wet space: No  
Addition: No  
Conversion: No

**18** Floor 3 - Hall

---



Dimensions: 23'1" x 6'1"  
Area: 182 sq. ft  
Counted as living area: Yes

Heated: Yes  
Finished: Yes  
Enclosed: Yes  
Contiguous: Yes  
Permitted: Yes  
Wet space: No  
Addition: No  
Conversion: No