

**Total Area: 3113 sq. ft**

1st Floor: 1503 sq. ft, 2nd Floor: 1610 sq. ft

Excluded: Garage 410 sq. ft, Fireplace 14 sq. ft, Open to below 86 sq. ft, Low ceiling 11 sq. ft, Walls: 211 sq. ft

**Property summary**



Home data report

# 109 Ocracoke Ln, Yorktown, VA, US

 **1**  
Half baths

 **1**  
Garages

# 109 Ocracoke Ln, Yorktown, VA, US



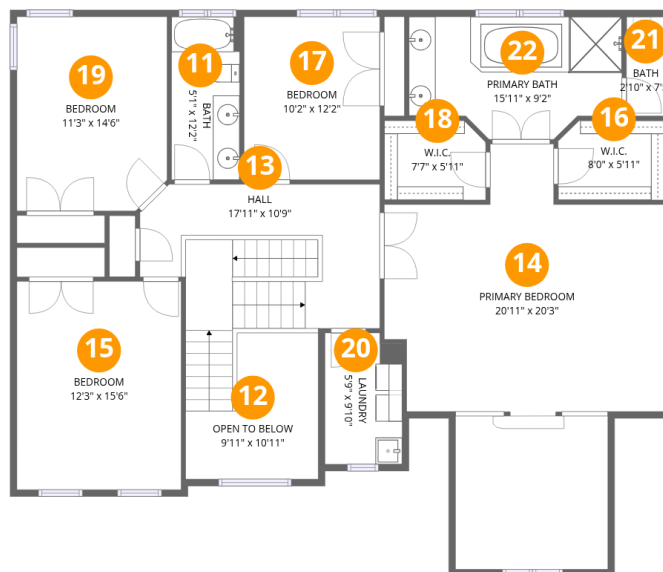
## Room dimensions

Floor 1

Total: 1503 sqft

Excluded: 424 sqft

#		Dimensions	sqft	Counted as living area
1	Hall	9'9" x 8'9"	85 sq. ft	Yes
2	Garage	19'1" x 21'5"	409 sq. ft	No
3	Bath	5'11" x 4'7"	27 sq. ft	Yes
4	Hall	6'0" x 9'8"	58 sq. ft	Yes
5	Dining Area	12'3" x 16'10"	207 sq. ft	Yes
6	Breakfast Nook	19'8" x 9'11"	194 sq. ft	Yes
7	Living Room	12'3" x 18'5"	226 sq. ft	Yes
8	Kitchen	19'8" x 16'7"	326 sq. ft	Yes
9	Foyer	10'3" x 5'1"	52 sq. ft	Yes
10	Family Room	16'1" x 19'3"	310 sq. ft	Yes



## Room dimensions

Floor 2

Total:1610sqft Excluded: 97sqft

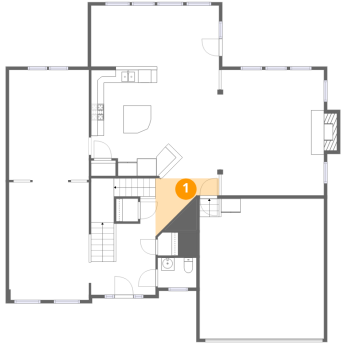
#		Dimensions	sqft	Counted as living area
11	Bath	5'1" x 12'2"	62 sq. ft	Yes
12	Open To Below	9'11" x 10'11"	108 sq. ft	No
13	Hall	17'11" x 10'9"	192 sq. ft	Yes
14	Primary Bedroom	20'11" x 20'3"	425 sq. ft	Yes
15	Bedroom	12'3" x 15'6"	190 sq. ft	Yes
16	W.I.C.	8'0" x 5'11"	47 sq. ft	Yes
17	Bedroom	10'2" x 12'2"	123 sq. ft	Yes
18	W.I.C.	7'7" x 5'11"	45 sq. ft	Yes
19	Bedroom	11'3" x 14'6"	163 sq. ft	Yes
20	Laundry	5'9" x 9'10"	57 sq. ft	Yes
21	Bath	2'10" x 7'5"	21 sq. ft	Yes

Home data report

**109 Ocracoke Ln, Yorktown, VA, US**

#		Dimensions	sqft	Counted as living area
22	Primary Bath	15'11" x 9'2"	146 sq. ft	Yes

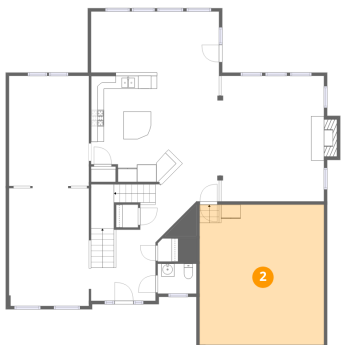
## 1 Floor 1 - Hall



Dimensions: 9'9" x 8'9"  
Area: 85 sq. ft  
Counted as living area: Yes

Heated: Yes  
Finished: Yes  
Enclosed: Yes  
Contiguous: Yes  
Permitted: Yes  
Wet space: No  
Addition: No  
Conversion: No

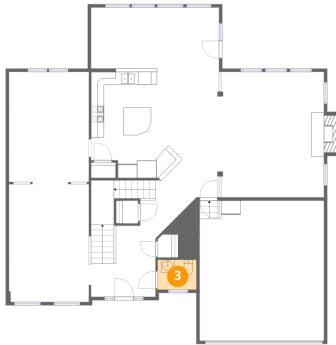
## 2 Floor 1 - Garage



Dimensions: 19'1" x 21'5"  
Area: 409 sq. ft  
Counted as living area: No

Heated: No  
Finished: No  
Enclosed: Yes  
Contiguous: Yes  
Permitted: Yes  
Wet space: No  
Addition: No  
Conversion: No

### 3 Floor 1 - Bath



Dimensions: 5'11" x 4'7"  
Area: 27 sq. ft  
Counted as living area: Yes

Heated: Yes  
Finished: Yes  
Enclosed: Yes  
Contiguous: Yes  
Permitted: Yes  
Wet space: Yes  
Addition: No  
Conversion: No

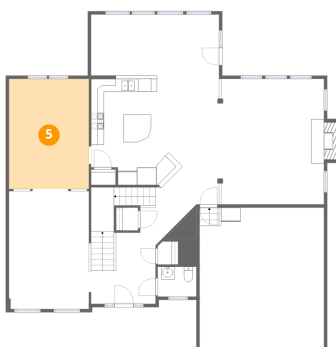
### 4 Floor 1 - Hall



Dimensions: 6'0" x 9'8"  
Area: 58 sq. ft  
Counted as living area: Yes

Heated: Yes  
Finished: Yes  
Enclosed: Yes  
Contiguous: Yes  
Permitted: Yes  
Wet space: No  
Addition: No  
Conversion: No

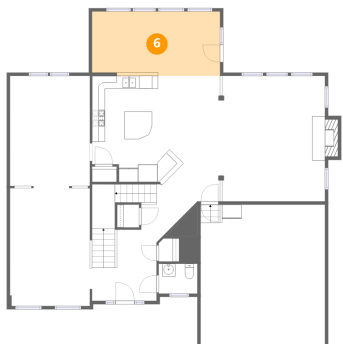
### 5 Floor 1 - Dining Area



Dimensions: 12'3" x 16'10"  
Area: 207 sq. ft  
Counted as living area: Yes

Heated: Yes  
Finished: Yes  
Enclosed: Yes  
Contiguous: Yes  
Permitted: Yes  
Wet space: No  
Addition: No  
Conversion: No

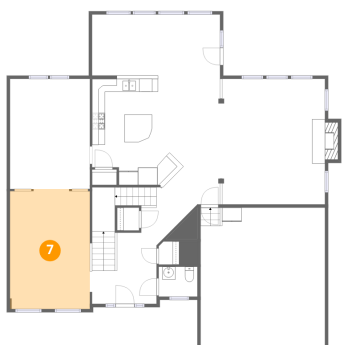
## 6 Floor 1 - Breakfast Nook



Dimensions: 19'8" x 9'11"  
Area: 194 sq. ft  
Counted as living area: Yes

Heated: Yes  
Finished: Yes  
Enclosed: Yes  
Contiguous: Yes  
Permitted: Yes  
Wet space: No  
Addition: No  
Conversion: No

## 7 Floor 1 - Living Room



Dimensions: 12'3" x 18'5"  
Area: 226 sq. ft  
Counted as living area: Yes

Heated: Yes  
Finished: Yes  
Enclosed: Yes  
Contiguous: Yes  
Permitted: Yes  
Wet space: No  
Addition: No  
Conversion: No

## 8 Floor 1 - Kitchen



Dimensions: 19'8" x 16'7"  
Area: 326 sq. ft  
Counted as living area: Yes

Heated: Yes  
Finished: Yes  
Enclosed: Yes  
Contiguous: Yes  
Permitted: Yes  
Wet space: No  
Addition: No  
Conversion: No

### 9 Floor 1 - Foyer



Dimensions: 10'3" x 5'1"  
Area: 52 sq. ft  
Counted as living area: Yes

Heated: Yes  
Finished: Yes  
Enclosed: Yes  
Contiguous: Yes  
Permitted: Yes  
Wet space: No  
Addition: No  
Conversion: No

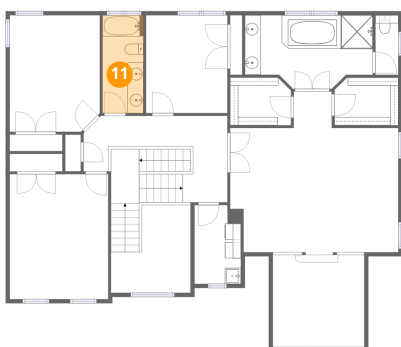
### 10 Floor 1 - Family Room



Dimensions: 16'1" x 19'3"  
Area: 310 sq. ft  
Counted as living area: Yes

Heated: Yes  
Finished: Yes  
Enclosed: Yes  
Contiguous: Yes  
Permitted: Yes  
Wet space: No  
Addition: No  
Conversion: No

### 11 Floor 2 - Bath



Dimensions: 5'1" x 12'2"  
Area: 62 sq. ft  
Counted as living area: Yes

Heated: Yes  
Finished: Yes  
Enclosed: Yes  
Contiguous: Yes  
Permitted: Yes  
Wet space: Yes  
Addition: No  
Conversion: No

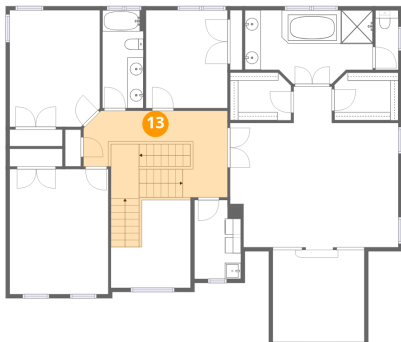
**12** Floor 2 - Open To Below



Dimensions: 9'11" x 10'11"  
Area: 108 sq. ft  
Counted as living area: No

Heated: No  
Finished: No  
Enclosed: No  
Contiguous: Yes  
Permitted: No  
Wet space: No  
Addition: No  
Conversion: No

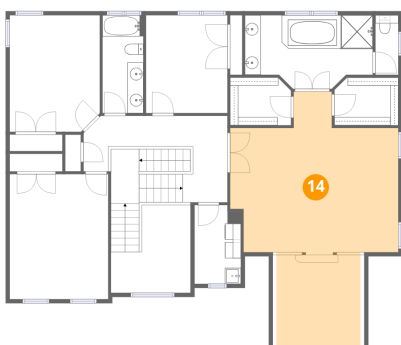
**13** Floor 2 - Hall



Dimensions: 17'11" x 10'9"  
Area: 192 sq. ft  
Counted as living area: Yes

Heated: Yes  
Finished: Yes  
Enclosed: Yes  
Contiguous: Yes  
Permitted: Yes  
Wet space: No  
Addition: No  
Conversion: No

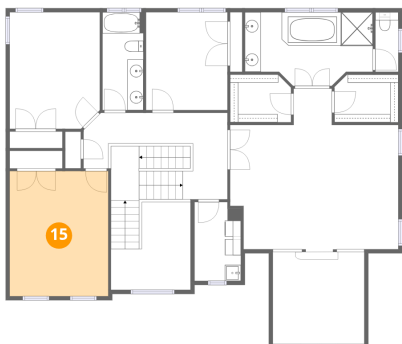
**14** Floor 2 - Primary Bedroom



Dimensions: 20'11" x 20'3"  
Area: 425 sq. ft  
Counted as living area: Yes

Heated: Yes  
Finished: Yes  
Enclosed: Yes  
Contiguous: Yes  
Permitted: Yes  
Wet space: No  
Addition: No  
Conversion: No

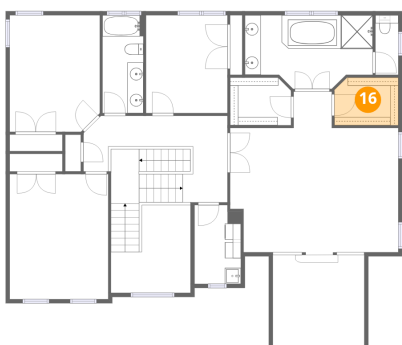
**15** Floor 2 - Bedroom



Dimensions: 12'3" x 15'6"  
Area: 190 sq. ft  
Counted as living area: Yes

Heated: Yes  
Finished: Yes  
Enclosed: Yes  
Contiguous: Yes  
Permitted: Yes  
Wet space: No  
Addition: No  
Conversion: No

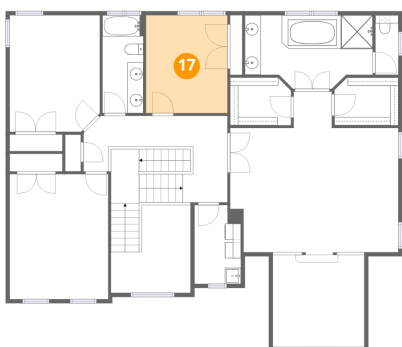
**16** Floor 2 - W.I.C.



Dimensions: 8'0" x 5'11"  
Area: 47 sq. ft  
Counted as living area: Yes

Heated: Yes  
Finished: Yes  
Enclosed: Yes  
Contiguous: Yes  
Permitted: Yes  
Wet space: No  
Addition: No  
Conversion: No

**17** Floor 2 - Bedroom



Dimensions: 10'2" x 12'2"  
Area: 123 sq. ft  
Counted as living area: Yes

Heated: Yes  
Finished: Yes  
Enclosed: Yes  
Contiguous: Yes  
Permitted: Yes  
Wet space: No  
Addition: No  
Conversion: No

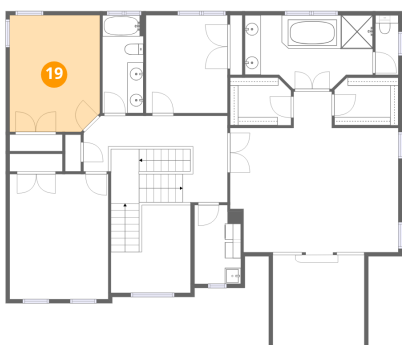
**18** Floor 2 - W.I.C.



Dimensions: 7'7" x 5'11"  
Area: 45 sq. ft  
Counted as living area: Yes

Heated: Yes  
Finished: Yes  
Enclosed: Yes  
Contiguous: Yes  
Permitted: Yes  
Wet space: No  
Addition: No  
Conversion: No

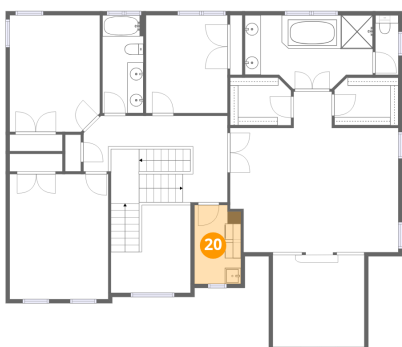
**19** Floor 2 - Bedroom



Dimensions: 11'3" x 14'6"  
Area: 163 sq. ft  
Counted as living area: Yes

Heated: Yes  
Finished: Yes  
Enclosed: Yes  
Contiguous: Yes  
Permitted: Yes  
Wet space: No  
Addition: No  
Conversion: No

**20** Floor 2 - Laundry



Dimensions: 5'9" x 9'10"  
Area: 57 sq. ft  
Counted as living area: Yes

Heated: Yes  
Finished: Yes  
Enclosed: Yes  
Contiguous: Yes  
Permitted: Yes  
Wet space: No  
Addition: No  
Conversion: No

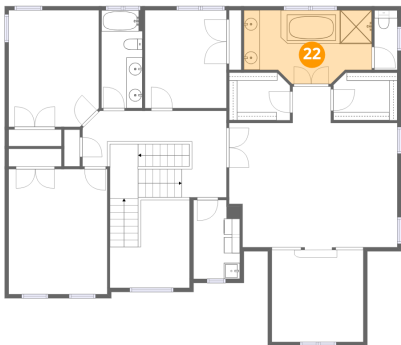
**21** Floor 2 - Bath



Dimensions: 2'10" x 7'5"  
Area: 21 sq. ft  
Counted as living area: Yes

Heated: Yes  
Finished: Yes  
Enclosed: Yes  
Contiguous: Yes  
Permitted: Yes  
Wet space: Yes  
Addition: No  
Conversion: No

**22** Floor 2 - Primary Bath



Dimensions: 15'11" x 9'2"  
Area: 146 sq. ft  
Counted as living area: Yes

Heated: Yes  
Finished: Yes  
Enclosed: Yes  
Contiguous: Yes  
Permitted: Yes  
Wet space: Yes  
Addition: No  
Conversion: No