

Home data report

1127 Gilbert Avenue, Downers Grove, DuPage County, Illinois, United States, 60515



Total Area: 2330 sq. ft

Basement: 713 sq. ft, 1st Floor: 788 sq. ft, 2nd Floor: 829 sq. ft

Excluded: Utility 48 sq. ft, Walls: 144 sq. ft

Property summary

 **3** Floors

 **3** Bedrooms

 **2** Bathrooms

Home data report

**1127 Gilbert Avenue, Downers Grove, DuPage County, Illinois,
United States, 60515**



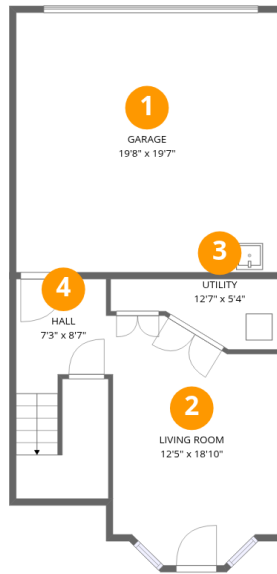
1
Half baths



1
Garages

Home data report

1127 Gilbert Avenue, Downers Grove, DuPage County, Illinois,
United States, 60515



Room dimensions

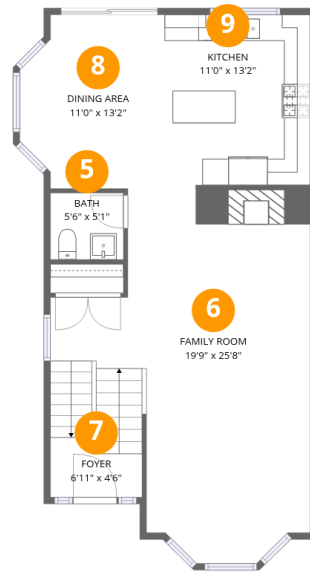
Floor 1 Below grade

Total:713sqft Excluded: 48sqft

#		Dimensions	sqft	Counted as living area
1	Garage	19'8" x 19'7"	385 sq. ft	Yes
2	Living Room	12'5" x 18'10"	203 sq. ft	Yes
3	Utility	12'7" x 5'4"	48 sq. ft	No
4	Hall	7'3" x 8'7"	113 sq. ft	Yes

Home data report

1127 Gilbert Avenue, Downers Grove, DuPage County, Illinois,
United States, 60515



Room dimensions

Floor 2

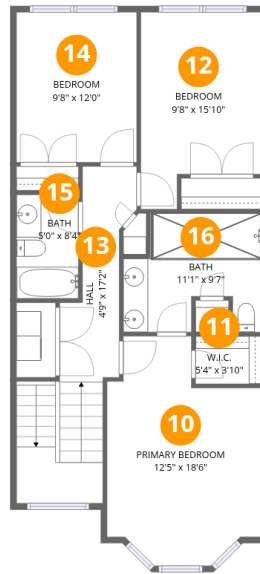
Total:788sqft

Excluded: 0sqft

#		Dimensions	sqft	Counted as living area
5	Bath	5'6" x 5'1"	28 sq. ft	Yes
6	Family Room	19'9" x 25'8"	428 sq. ft	Yes
7	Foyer	6'11" x 4'6"	31 sq. ft	Yes
8	Dining Area	11'0" x 13'2"	132 sq. ft	Yes
9	Kitchen	11'0" x 13'2"	143 sq. ft	Yes

Home data report

1127 Gilbert Avenue, Downers Grove, DuPage County, Illinois,
United States, 60515



Room dimensions

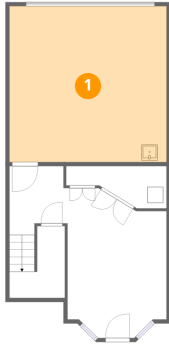
Floor 3

Total:829sqft Excluded: 0sqft

#		Dimensions	sqft	Counted as living area
10	Primary Bedroom	12'5" x 18'6"	188 sq. ft	Yes
11	W.I.C.	5'4" x 3'10"	20 sq. ft	Yes
12	Bedroom	9'8" x 15'10"	135 sq. ft	Yes
13	Hall	4'9" x 17'2"	136 sq. ft	Yes
14	Bedroom	9'8" x 12'0"	117 sq. ft	Yes
15	Bath	5'0" x 8'4"	42 sq. ft	Yes
16	Bath	11'1" x 9'7"	89 sq. ft	Yes

1127 Gilbert Avenue, Downers Grove, DuPage County, Illinois,
United States, 60515

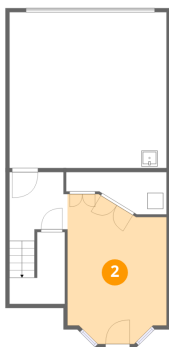
1 Floor 1 - Garage



Dimensions: 19'8" x 19'7"
Area: 385 sq. ft
Counted as living area: No

Heated: No
Finished: Yes
Enclosed: Yes
Contiguous: Yes
Permitted: Yes
Wet space: No
Addition: No
Conversion: No

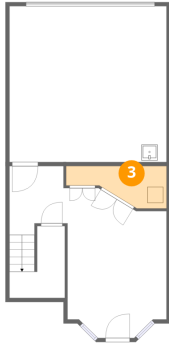
2 Floor 1 - Living Room



Dimensions: 12'5" x 18'10"
Area: 203 sq. ft
Counted as living area: Yes

Heated: Yes
Finished: Yes
Enclosed: Yes
Contiguous: Yes
Permitted: Yes
Wet space: No
Addition: No
Conversion: No

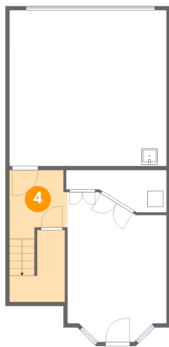
3 Floor 1 - Utility



Dimensions: 12'7" x 5'4"
Area: 48 sq. ft
Counted as living area: No

Heated: Yes
Finished: No
Enclosed: Yes
Contiguous: Yes
Permitted: Yes
Wet space: No
Addition: No
Conversion: No

4 Floor 1 - Hall



Dimensions: 7'3" x 8'7"
Area: 113 sq. ft
Counted as living area: No

Heated: Yes
Finished: Yes
Enclosed: Yes
Contiguous: No
Permitted: Yes
Wet space: No
Addition: No
Conversion: No

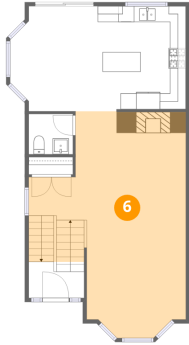
5 Floor 2 - Bath



Dimensions: 5'6" x 5'1"
Area: 28 sq. ft
Counted as living area: Yes

Heated: Yes
Finished: Yes
Enclosed: Yes
Contiguous: Yes
Permitted: Yes
Wet space: Yes
Addition: No
Conversion: No

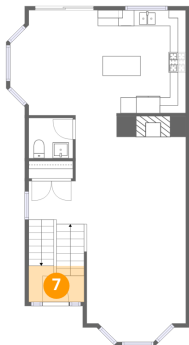
6 Floor 2 - Family Room



Dimensions: 19'9" x 25'8"
Area: 428 sq. ft
Counted as living area: Yes

Heated: Yes
Finished: Yes
Enclosed: Yes
Contiguous: Yes
Permitted: Yes
Wet space: No
Addition: No
Conversion: No

7 Floor 2 - Foyer



Dimensions: 6'11" x 4'6"
Area: 31 sq. ft
Counted as living area: Yes

Heated: Yes
Finished: Yes
Enclosed: Yes
Contiguous: Yes
Permitted: Yes
Wet space: No
Addition: No
Conversion: No

8 Floor 2 - Dining Area

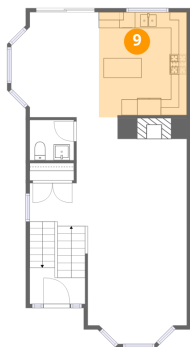


Dimensions: 11'0" x 13'2"
Area: 132 sq. ft
Counted as living area: Yes

Heated: Yes
Finished: Yes
Enclosed: Yes
Contiguous: Yes
Permitted: Yes
Wet space: No
Addition: No
Conversion: No

1127 Gilbert Avenue, Downers Grove, DuPage County, Illinois, United States, 60515

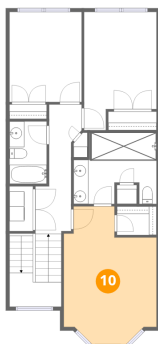
9 Floor 2 - Kitchen



Dimensions: 11'0" x 13'2"
Area: 143 sq. ft
Counted as living area: Yes

Heated: Yes
Finished: Yes
Enclosed: Yes
Contiguous: Yes
Permitted: Yes
Wet space: No
Addition: No
Conversion: No

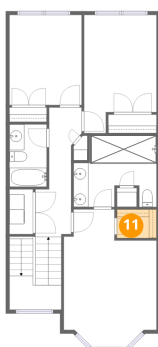
10 Floor 3 - Primary Bedroom



Dimensions: 12'5" x 18'6"
Area: 188 sq. ft
Counted as living area: Yes

Heated: Yes
Finished: Yes
Enclosed: Yes
Contiguous: Yes
Permitted: Yes
Wet space: No
Addition: No
Conversion: No

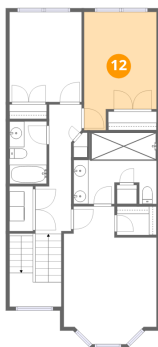
11 Floor 3 - W.I.C.



Dimensions: 5'4" x 3'10"
Area: 20 sq. ft
Counted as living area: Yes

Heated: Yes
Finished: Yes
Enclosed: Yes
Contiguous: Yes
Permitted: Yes
Wet space: No
Addition: No
Conversion: No

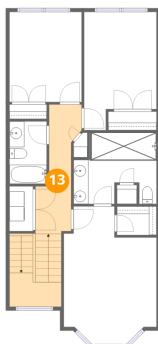
12 Floor 3 - Bedroom



Dimensions: 9'8" x 15'10"
Area: 135 sq. ft
Counted as living area: Yes

Heated: Yes
Finished: Yes
Enclosed: Yes
Contiguous: Yes
Permitted: Yes
Wet space: No
Addition: No
Conversion: No

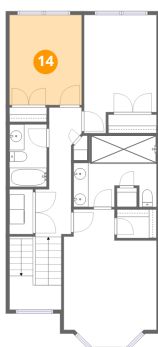
13 Floor 3 - Hall



Dimensions: 4'9" x 17'2"
Area: 136 sq. ft
Counted as living area: Yes

Heated: Yes
Finished: Yes
Enclosed: Yes
Contiguous: Yes
Permitted: Yes
Wet space: No
Addition: No
Conversion: No

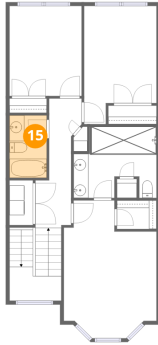
14 Floor 3 - Bedroom



Dimensions: 9'8" x 12'0"
Area: 117 sq. ft
Counted as living area: Yes

Heated: Yes
Finished: Yes
Enclosed: Yes
Contiguous: Yes
Permitted: Yes
Wet space: No
Addition: No
Conversion: No

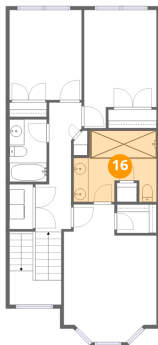
15 Floor 3 - Bath



Dimensions: 5'0" x 8'4"
Area: 42 sq. ft
Counted as living area: Yes

Heated: Yes
Finished: Yes
Enclosed: Yes
Contiguous: Yes
Permitted: Yes
Wet space: Yes
Addition: No
Conversion: No

16 Floor 3 - Bath



Dimensions: 11'1" x 9'7"
Area: 89 sq. ft
Counted as living area: Yes

Heated: Yes
Finished: Yes
Enclosed: Yes
Contiguous: Yes
Permitted: Yes
Wet space: Yes
Addition: No
Conversion: No