



Total Area: 3586 sq. ft

Basement: 488 sq. ft, 1st Floor: 1948 sq. ft, 2nd Floor: 1150 sq. ft

Excluded: Workshop 177 sq. ft, Utility 303 sq. ft, Low ceiling 170 sq. ft, Garage 483 sq. ft, Garden shed 208 sq. ft, Patio 23 sq. ft, Attic 693 sq. ft, Walls: 390 sq. ft

Property summary

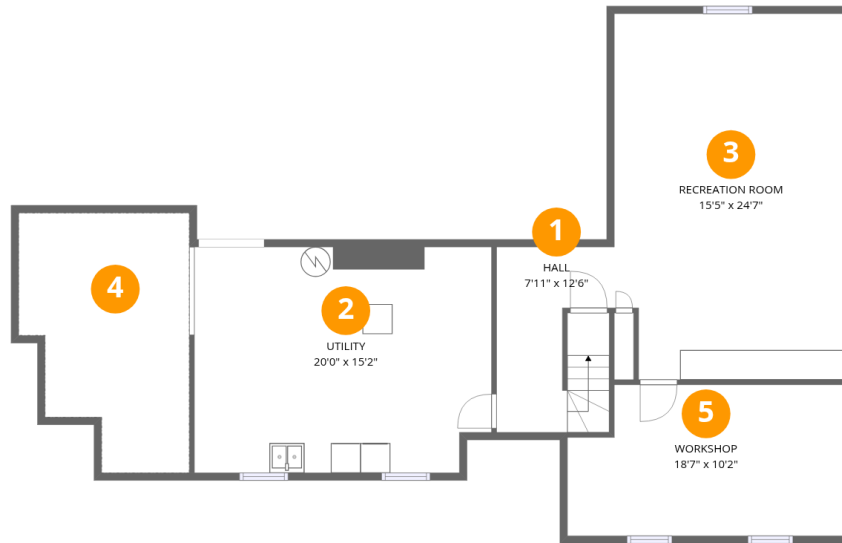


Home data report

2080 Norfork, Northfield, IL, US

 **1**
Half baths

 **2**
Garages



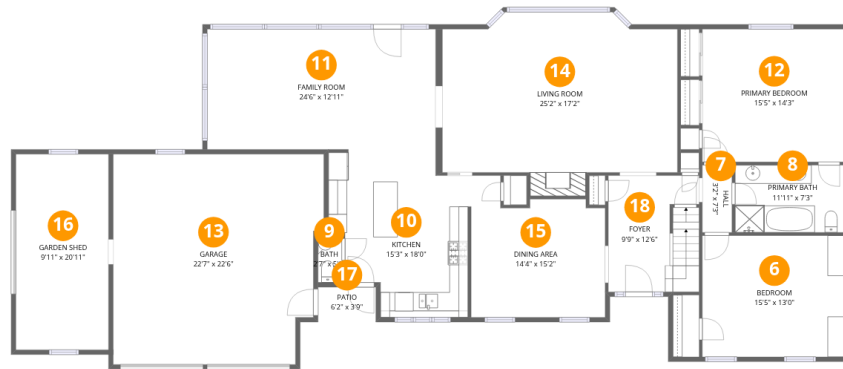
Room dimensions

Floor 1 Below grade

Total:488sqft

Excluded: 650sqft

#		Dimensions	sqft	Counted as living area
1	Hall	7'11" x 12'6"	93 sq. ft	Yes
2	Utility	20'0" x 15'2"	300 sq. ft	No
3	Recreation Room	15'5" x 24'7"	371 sq. ft	Yes
4	Crawl Space	11'6" x 17'6"	170 sq. ft	No
5	Workshop	18'7" x 10'2"	177 sq. ft	No



Room dimensions

Floor 2

Total: 1948sqft

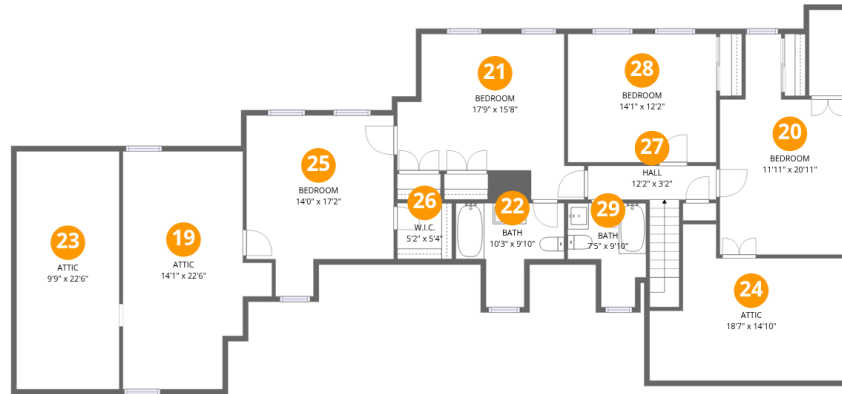
Excluded: 714sqft

#		Dimensions	sqft	Counted as living area
6	Bedroom	15'5" x 13'0"	200 sq. ft	Yes
7	Hall	3'2" x 7'3"	23 sq. ft	Yes
8	Primary Bath	11'11" x 7'3"	86 sq. ft	Yes
9	Bath	2'7" x 5'0"	13 sq. ft	Yes
10	Kitchen	15'3" x 18'0"	229 sq. ft	Yes
11	Family Room	24'6" x 12'11"	315 sq. ft	Yes
12	Primary Bedroom	15'5" x 14'3"	219 sq. ft	Yes
13	Garage	22'7" x 22'6"	483 sq. ft	No
14	Living Room	25'2" x 17'2"	426 sq. ft	Yes
15	Dining Area	14'4" x 15'2"	185 sq. ft	Yes
16	Garden Shed	9'11" x 20'11"	208 sq. ft	No

Home data report

2080 Norfolk, Northfield, IL, US

#		Dimensions	sqft	Counted as living area
17	Patio	6'2" x 3'9"	23 sq. ft	No
18	Foyer	9'9" x 12'6"	119 sq. ft	Yes



Room dimensions

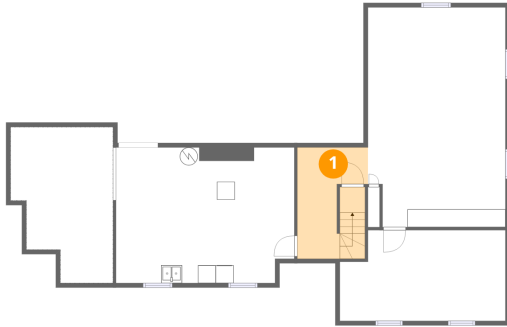
Floor 3

Total: 1150sqft

Excluded: 693sqft

#		Dimensions	sqft	Counted as living area
19	Attic	14'1" x 22'6"	255 sq. ft	No
20	Bedroom	11'11" x 20'11"	196 sq. ft	Yes
21	Bedroom	17'9" x 15'8"	204 sq. ft	Yes
22	Bath	10'3" x 9'10"	71 sq. ft	Yes
23	Attic	9'9" x 22'6"	220 sq. ft	No
24	Attic	18'7" x 14'10"	210 sq. ft	No
25	Bedroom	14'0" x 17'2"	203 sq. ft	Yes
26	W.I.C.	5'2" x 5'4"	28 sq. ft	Yes
27	Hall	12'2" x 3'2"	68 sq. ft	Yes
28	Bedroom	14'1" x 12'2"	171 sq. ft	Yes
29	Bath	7'5" x 9'10"	56 sq. ft	Yes

1 Floor 1 - Hall



Dimensions: 7'11" x 12'6"
Area: 93 sq. ft
Counted as living area: Yes

Heated: Yes
Finished: Yes
Enclosed: Yes
Contiguous: Yes
Permitted: Yes
Wet space: No
Addition: No
Conversion: No

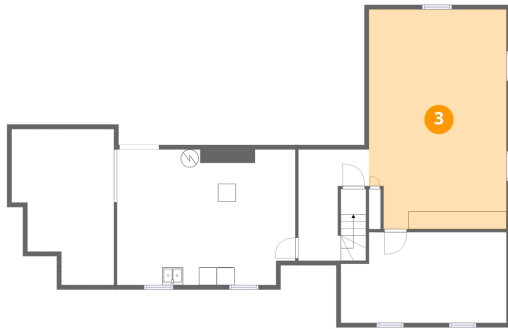
2 Floor 1 - Utility



Dimensions: 20'0" x 15'2"
Area: 300 sq. ft
Counted as living area: No

Heated: Yes
Finished: No
Enclosed: Yes
Contiguous: Yes
Permitted: Yes
Wet space: No
Addition: No
Conversion: No

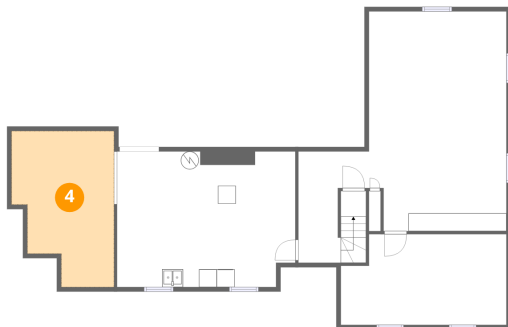
3 Floor 1 - Recreation Room



Dimensions: 15'5" x 24'7"
Area: 371 sq. ft
Counted as living area: Yes

Heated: Yes
Finished: Yes
Enclosed: Yes
Contiguous: Yes
Permitted: Yes
Wet space: No
Addition: No
Conversion: No

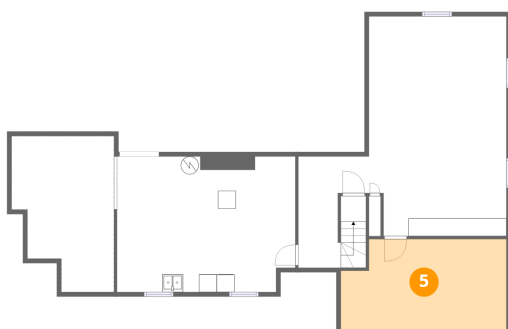
4 Floor 1 - Crawl Space



Dimensions: 11'6" x 17'6"
Area: 170 sq. ft
Counted as living area: No

Heated: No
Finished: No
Enclosed: No
Contiguous: Yes
Permitted: No
Wet space: No
Addition: No
Conversion: No

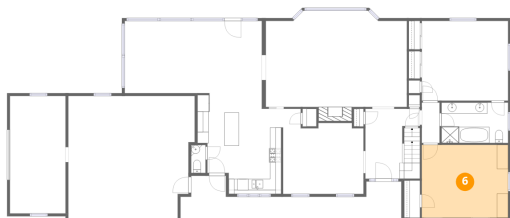
5 Floor 1 - Workshop



Dimensions: 18'7" x 10'2"
Area: 177 sq. ft
Counted as living area: No

Heated: No
Finished: No
Enclosed: Yes
Contiguous: Yes
Permitted: Yes
Wet space: No
Addition: No
Conversion: No

6 Floor 2 - Bedroom



Dimensions: 15'5" x 13'0"
Area: 200 sq. ft
Counted as living area: Yes

Heated: Yes
Finished: Yes
Enclosed: Yes
Contiguous: Yes
Permitted: Yes
Wet space: No
Addition: No
Conversion: No

7 Floor 2 - Hall



Dimensions: 3'2" x 7'3"
Area: 23 sq. ft
Counted as living area: Yes

Heated: Yes
Finished: Yes
Enclosed: Yes
Contiguous: Yes
Permitted: Yes
Wet space: No
Addition: No
Conversion: No

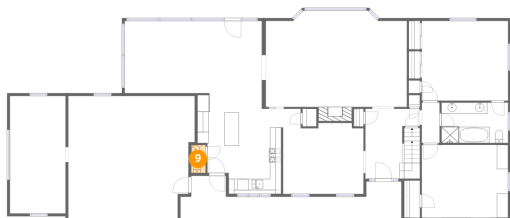
8 Floor 2 - Primary Bath



Dimensions: 11'11" x 7'3"
Area: 86 sq. ft
Counted as living area: Yes

Heated: Yes
Finished: Yes
Enclosed: Yes
Contiguous: Yes
Permitted: Yes
Wet space: Yes
Addition: No
Conversion: No

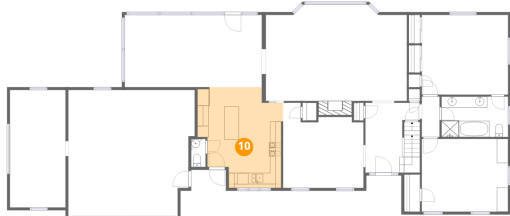
9 Floor 2 - Bath



Dimensions: 2'7" x 5'0"
Area: 13 sq. ft
Counted as living area: Yes

Heated: Yes
Finished: Yes
Enclosed: Yes
Contiguous: Yes
Permitted: Yes
Wet space: Yes
Addition: No
Conversion: No

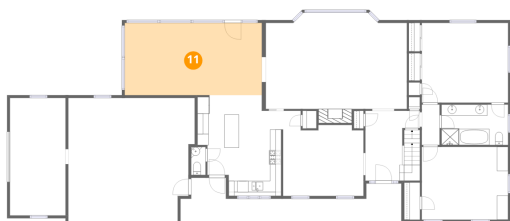
10 Floor 2 - Kitchen



Dimensions: 15'3" x 18'0"
Area: 229 sq. ft
Counted as living area: Yes

Heated: Yes
Finished: Yes
Enclosed: Yes
Contiguous: Yes
Permitted: Yes
Wet space: No
Addition: No
Conversion: No

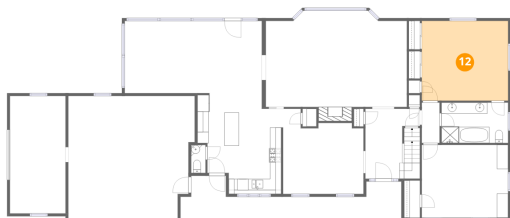
11 Floor 2 - Family Room



Dimensions: 24'6" x 12'11"
Area: 315 sq. ft
Counted as living area: Yes

Heated: Yes
Finished: Yes
Enclosed: Yes
Contiguous: Yes
Permitted: Yes
Wet space: No
Addition: No
Conversion: No

12 Floor 2 - Primary Bedroom



Dimensions: 15'5" x 14'3"
Area: 219 sq. ft
Counted as living area: Yes

Heated: Yes
Finished: Yes
Enclosed: Yes
Contiguous: Yes
Permitted: Yes
Wet space: No
Addition: No
Conversion: No

13 Floor 2 - Garage



Dimensions: 22'7" x 22'6"
Area: 483 sq. ft
Counted as living area: No

Heated: No
Finished: No
Enclosed: Yes
Contiguous: Yes
Permitted: Yes
Wet space: No
Addition: No
Conversion: No

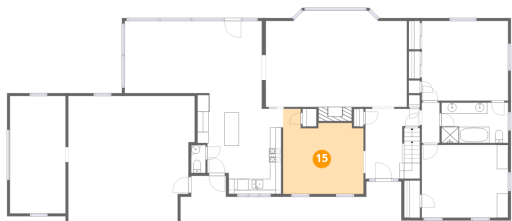
14 Floor 2 - Living Room



Dimensions: 25'2" x 17'2"
Area: 426 sq. ft
Counted as living area: Yes

Heated: Yes
Finished: Yes
Enclosed: Yes
Contiguous: Yes
Permitted: Yes
Wet space: No
Addition: No
Conversion: No

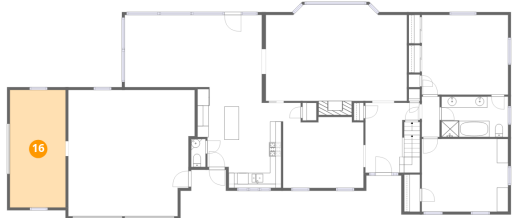
15 Floor 2 - Dining Area



Dimensions: 14'4" x 15'2"
Area: 185 sq. ft
Counted as living area: Yes

Heated: Yes
Finished: Yes
Enclosed: Yes
Contiguous: Yes
Permitted: Yes
Wet space: No
Addition: No
Conversion: No

16 Floor 2 - Garden Shed



Dimensions: 9'11" x 20'11"
Area: 208 sq. ft
Counted as living area: No

Heated: No
Finished: No
Enclosed: Yes
Contiguous: Yes
Permitted: Yes
Wet space: No
Addition: No
Conversion: No

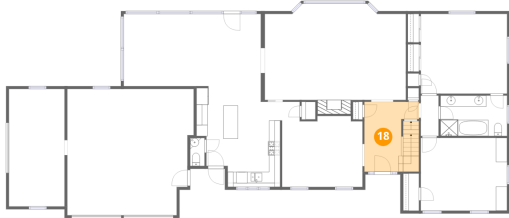
17 Floor 2 - Patio



Dimensions: 6'2" x 3'9"
Area: 23 sq. ft
Counted as living area: No

Heated: No
Finished: No
Enclosed: No
Contiguous: Yes
Permitted: Yes
Wet space: No
Addition: No
Conversion: No

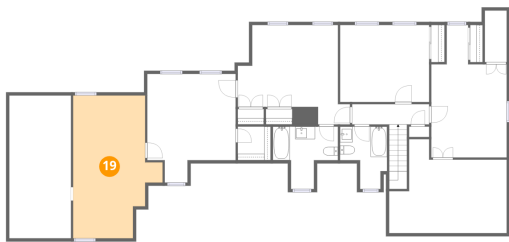
18 Floor 2 - Foyer



Dimensions: 9'9" x 12'6"
Area: 119 sq. ft
Counted as living area: Yes

Heated: Yes
Finished: Yes
Enclosed: Yes
Contiguous: Yes
Permitted: Yes
Wet space: No
Addition: No
Conversion: No

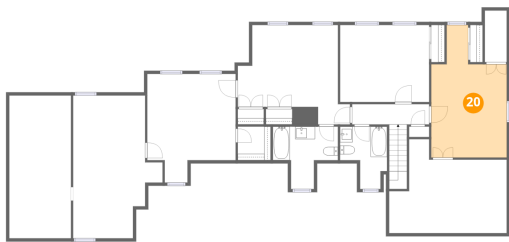
19 Floor 3 - Attic



Dimensions: 14'1" x 22'6"
Area: 255 sq. ft
Counted as living area: No

Heated: No
Finished: No
Enclosed: Yes
Contiguous: Yes
Permitted: Yes
Wet space: No
Addition: No
Conversion: No

20 Floor 3 - Bedroom



Dimensions: 11'11" x 20'11"
Area: 196 sq. ft
Counted as living area: Yes

Heated: Yes
Finished: Yes
Enclosed: Yes
Contiguous: Yes
Permitted: Yes
Wet space: No
Addition: No
Conversion: No

21 Floor 3 - Bedroom



Dimensions: 17'9" x 15'8"
Area: 204 sq. ft
Counted as living area: Yes

Heated: Yes
Finished: Yes
Enclosed: Yes
Contiguous: Yes
Permitted: Yes
Wet space: No
Addition: No
Conversion: No

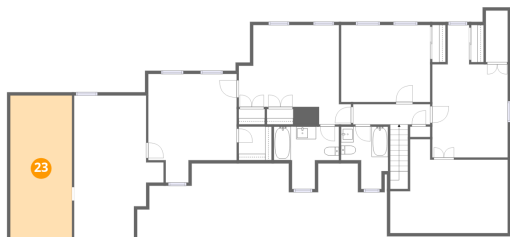
22 Floor 3 - Bath



Dimensions: 10'3" x 9'10"
Area: 71 sq. ft
Counted as living area: Yes

Heated: Yes
Finished: Yes
Enclosed: Yes
Contiguous: Yes
Permitted: Yes
Wet space: Yes
Addition: No
Conversion: No

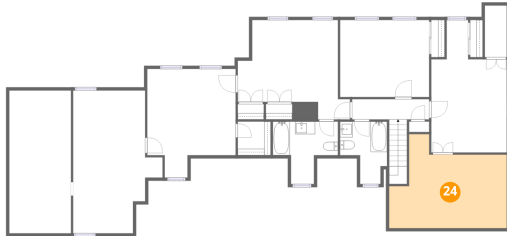
23 Floor 3 - Attic



Dimensions: 9'9" x 22'6"
Area: 220 sq. ft
Counted as living area: No

Heated: No
Finished: No
Enclosed: Yes
Contiguous: Yes
Permitted: Yes
Wet space: No
Addition: No
Conversion: No

24 Floor 3 - Attic



Dimensions: 18'7" x 14'10"
Area: 210 sq. ft
Counted as living area: No

Heated: No
Finished: No
Enclosed: Yes
Contiguous: Yes
Permitted: Yes
Wet space: No
Addition: No
Conversion: No

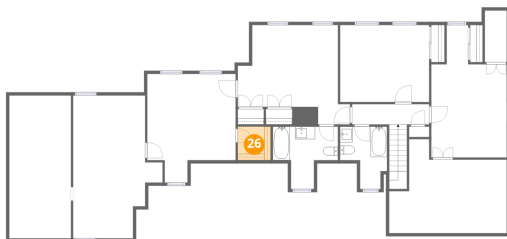
25 Floor 3 - Bedroom



Dimensions: 14'0" x 17'2"
Area: 203 sq. ft
Counted as living area: Yes

Heated: Yes
Finished: Yes
Enclosed: Yes
Contiguous: Yes
Permitted: Yes
Wet space: No
Addition: No
Conversion: No

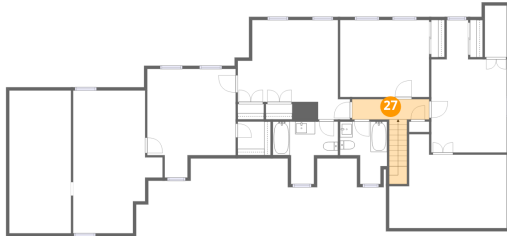
26 Floor 3 - W.I.C.



Dimensions: 5'2" x 5'4"
Area: 28 sq. ft
Counted as living area: Yes

Heated: Yes
Finished: Yes
Enclosed: Yes
Contiguous: Yes
Permitted: Yes
Wet space: No
Addition: No
Conversion: No

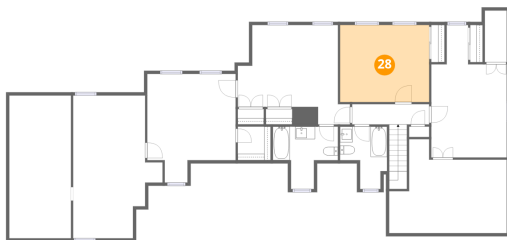
27 Floor 3 - Hall



Dimensions: 12'2" x 3'2"
Area: 68 sq. ft
Counted as living area: Yes

Heated: Yes
Finished: Yes
Enclosed: Yes
Contiguous: Yes
Permitted: Yes
Wet space: No
Addition: No
Conversion: No

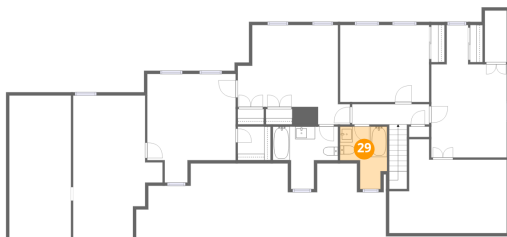
28 Floor 3 - Bedroom



Dimensions: 14'1" x 12'2"
Area: 171 sq. ft
Counted as living area: Yes

Heated: Yes
Finished: Yes
Enclosed: Yes
Contiguous: Yes
Permitted: Yes
Wet space: No
Addition: No
Conversion: No

29 Floor 3 - Bath



Dimensions: 7'5" x 9'10"
Area: 56 sq. ft
Counted as living area: Yes

Heated: Yes
Finished: Yes
Enclosed: Yes
Contiguous: Yes
Permitted: Yes
Wet space: Yes
Addition: No
Conversion: No