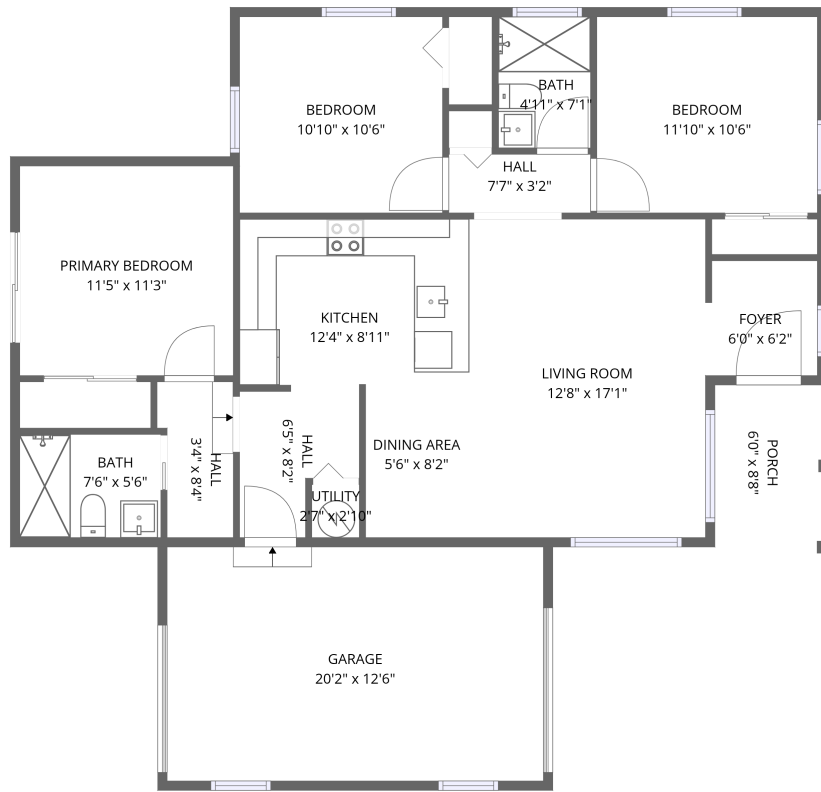


Home data report

2419 Otis St, Edgewater, CO, US



1st floor

Total Area: 1049 sq. ft

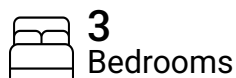
1st Floor: 1049 sq. ft

Excluded: Garage 253 sq. ft, Porch 52 sq. ft, Walls: 96 sq. ft

Property summary



1
Floors



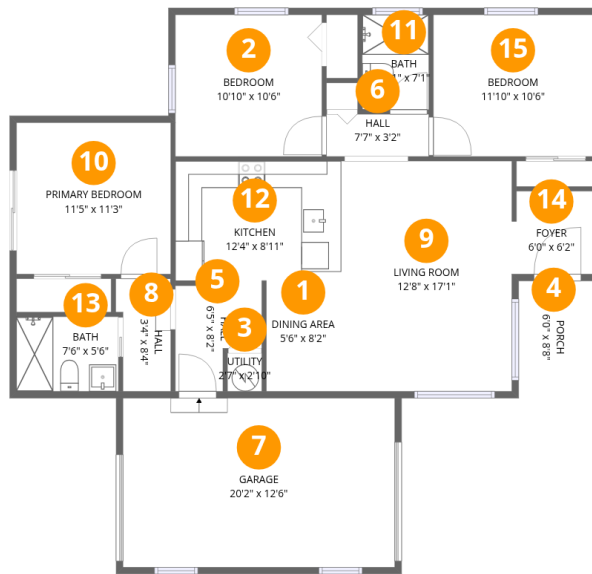
3
Bedrooms



2
Bathrooms



1
Garages



Room dimensions

Floor 1

Total:1049sqft

Excluded: 305sqft

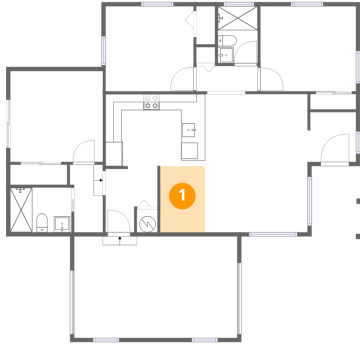
#		Dimensions	sqft	Counted as living area
1	Dining Area	5'6" x 8'2"	45 sq. ft	Yes
2	Bedroom	10'10" x 10'6"	114 sq. ft	Yes
3	Utility	2'7" x 2'10"	7 sq. ft	Yes
4	Porch	6'0" x 8'8"	52 sq. ft	No
5	Hall	6'5" x 8'2"	53 sq. ft	Yes
6	Hall	7'7" x 3'2"	24 sq. ft	Yes
7	Garage	20'2" x 12'6"	252 sq. ft	No
8	Hall	3'4" x 8'4"	28 sq. ft	Yes
9	Living Room	12'8" x 17'1"	216 sq. ft	Yes
10	Primary Bedroom	11'5" x 11'3"	128 sq. ft	Yes
11	Bath	4'11" x 7'1"	35 sq. ft	Yes

Home data report

2419 Otis St,Edgewater,CO,US

#		Dimensions	sqft	Counted as living area
12	Kitchen	12'4" x 8'11"	109 sq. ft	Yes
13	Bath	7'6" x 5'6"	42 sq. ft	Yes
14	Foyer	6'0" x 6'2"	37 sq. ft	Yes
15	Bedroom	11'10" x 10'6"	124 sq. ft	Yes

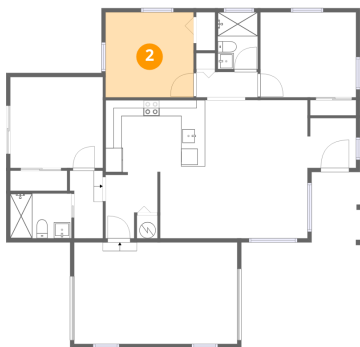
1 Floor 1 - Dining Area



Dimensions: 5'6" x 8'2"
Area: 45 sq. ft
Counted as living area: Yes

Heated: Yes
Finished: Yes
Enclosed: Yes
Contiguous: Yes
Permitted: Yes
Wet space: No
Addition: No
Conversion: No

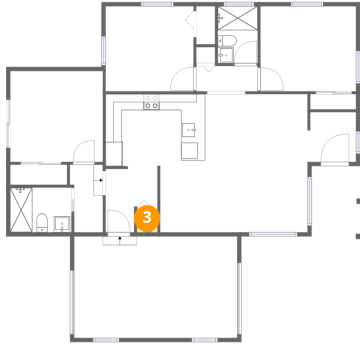
2 Floor 1 - Bedroom



Dimensions: 10'10" x 10'6"
Area: 114 sq. ft
Counted as living area: Yes

Heated: Yes
Finished: Yes
Enclosed: Yes
Contiguous: Yes
Permitted: Yes
Wet space: No
Addition: No
Conversion: No

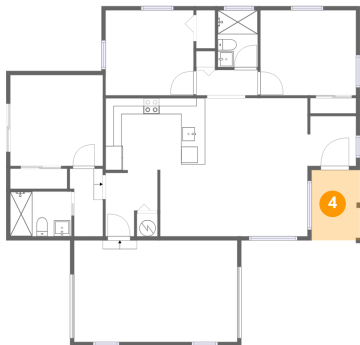
3 Floor 1 - Utility



Dimensions: 2'7" x 2'10"
Area: 7 sq. ft
Counted as living area: Yes

Heated: Yes
Finished: Yes
Enclosed: Yes
Contiguous: Yes
Permitted: Yes
Wet space: No
Addition: No
Conversion: No

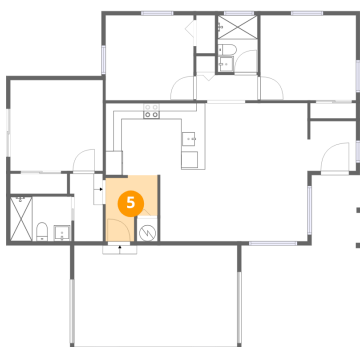
4 Floor 1 - Porch



Dimensions: 6'0" x 8'8"
Area: 52 sq. ft
Counted as living area: No

Heated: No
Finished: No
Enclosed: No
Contiguous: Yes
Permitted: Yes
Wet space: No
Addition: No
Conversion: No

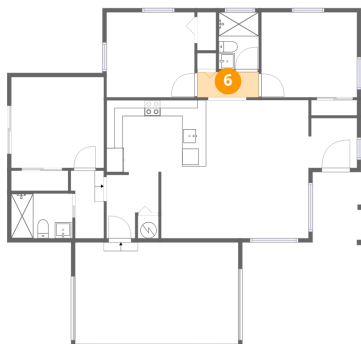
5 Floor 1 - Hall



Dimensions: 6'5" x 8'2"
Area: 53 sq. ft
Counted as living area: Yes

Heated: Yes
Finished: Yes
Enclosed: Yes
Contiguous: Yes
Permitted: Yes
Wet space: No
Addition: No
Conversion: No

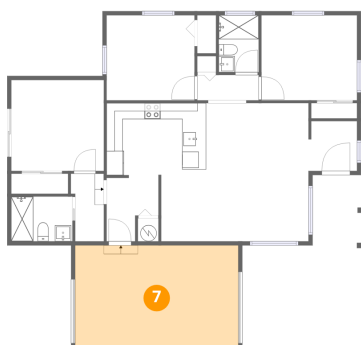
6 Floor 1 - Hall



Dimensions: 7'7" x 3'2"
Area: 24 sq. ft
Counted as living area: Yes

Heated: Yes
Finished: Yes
Enclosed: Yes
Contiguous: Yes
Permitted: Yes
Wet space: No
Addition: No
Conversion: No

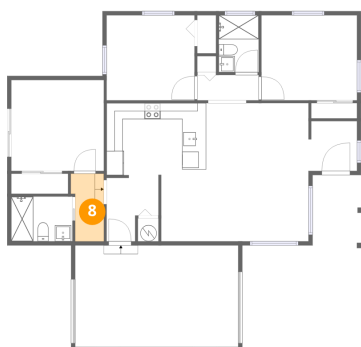
7 Floor 1 - Garage



Dimensions: 20'2" x 12'6"
Area: 252 sq. ft
Counted as living area: No

Heated: No
Finished: No
Enclosed: Yes
Contiguous: Yes
Permitted: Yes
Wet space: No
Addition: No
Conversion: No

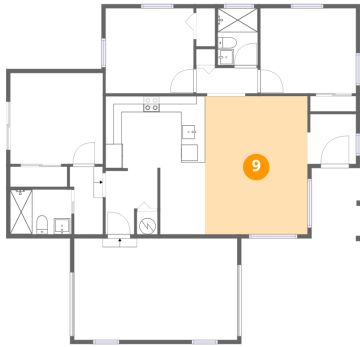
8 Floor 1 - Hall



Dimensions: 3'4" x 8'4"
Area: 28 sq. ft
Counted as living area: Yes

Heated: Yes
Finished: Yes
Enclosed: Yes
Contiguous: Yes
Permitted: Yes
Wet space: No
Addition: No
Conversion: No

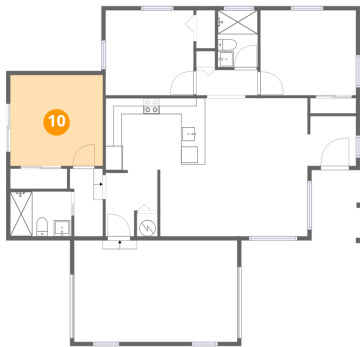
9 Floor 1 - Living Room



Dimensions: 12'8" x 17'1"
Area: 216 sq. ft
Counted as living area: Yes

Heated: Yes
Finished: Yes
Enclosed: Yes
Contiguous: Yes
Permitted: Yes
Wet space: No
Addition: No
Conversion: No

10 Floor 1 - Primary Bedroom



Dimensions: 11'5" x 11'3"
Area: 128 sq. ft
Counted as living area: Yes

Heated: Yes
Finished: Yes
Enclosed: Yes
Contiguous: Yes
Permitted: Yes
Wet space: No
Addition: No
Conversion: No

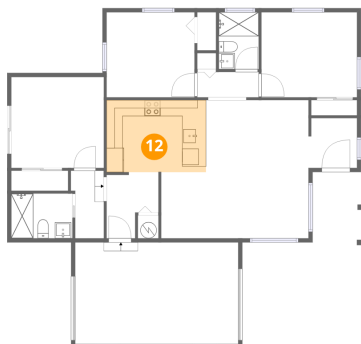
11 Floor 1 - Bath



Dimensions: 4'11" x 7'1"
Area: 35 sq. ft
Counted as living area: Yes

Heated: Yes
Finished: Yes
Enclosed: Yes
Contiguous: Yes
Permitted: Yes
Wet space: Yes
Addition: No
Conversion: No

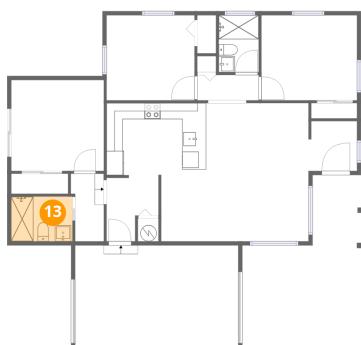
12 Floor 1 - Kitchen



Dimensions: 12'4" x 8'11"
Area: 109 sq. ft
Counted as living area: Yes

Heated: Yes
Finished: Yes
Enclosed: Yes
Contiguous: Yes
Permitted: Yes
Wet space: No
Addition: No
Conversion: No

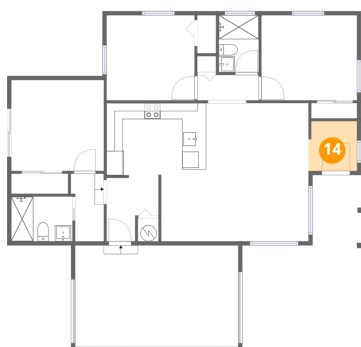
13 Floor 1 - Bath



Dimensions: 7'6" x 5'6"
Area: 42 sq. ft
Counted as living area: Yes

Heated: Yes
Finished: Yes
Enclosed: Yes
Contiguous: Yes
Permitted: Yes
Wet space: Yes
Addition: No
Conversion: No

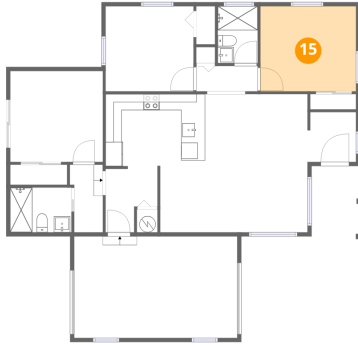
14 Floor 1 - Foyer



Dimensions: 6'0" x 6'2"
Area: 37 sq. ft
Counted as living area: Yes

Heated: Yes
Finished: Yes
Enclosed: Yes
Contiguous: Yes
Permitted: Yes
Wet space: No
Addition: No
Conversion: No

15 Floor 1 - Bedroom



Dimensions: 11'10" x 10'6"
Area: 124 sq. ft
Counted as living area: Yes

Heated: Yes
Finished: Yes
Enclosed: Yes
Contiguous: Yes
Permitted: Yes
Wet space: No
Addition: No
Conversion: No