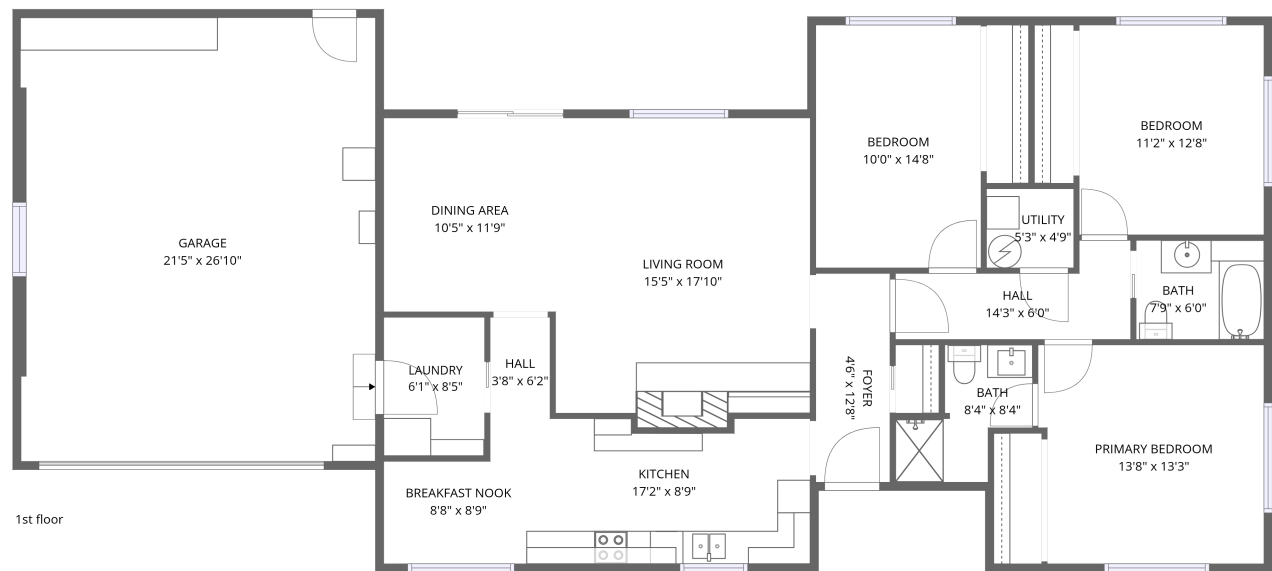


Home data report

311 6th Street, Corning, Tehama County, California, United States, 96021




Total Area: 1510 sq. ft


1st Floor: 1510 sq. ft

Excluded: Garage 571 sq. ft, Utility 25 sq. ft, Walls: 136 sq. ft

Property summary

 1 Floors

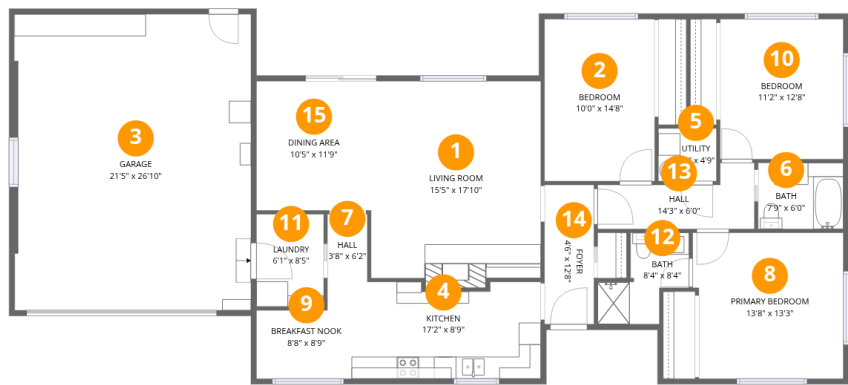
 3 Bedrooms

 2 Bathrooms

 1 Garages

Home data report

311 6th Street, Corning, Tehama County, California, United States, 96021



Room dimensions

Floor 1

Total:1510sqft    Excluded: 596sqft

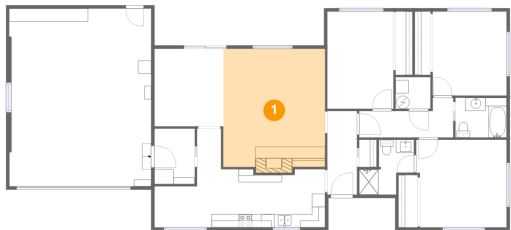
#		Dimensions	sqft	Counted as living area
1	Living Room	15'5" x 17'10"	280 sq. ft	Yes
2	Bedroom	10'0" x 14'8"	147 sq. ft	Yes
3	Garage	21'5" x 26'10"	571 sq. ft	No
4	Kitchen	17'2" x 8'9"	145 sq. ft	Yes
5	Utility	5'3" x 4'9"	25 sq. ft	No
6	Bath	7'9" x 6'0"	46 sq. ft	Yes
7	Hall	3'8" x 6'2"	22 sq. ft	Yes
8	Primary Bedroom	13'8" x 13'3"	177 sq. ft	Yes
9	Breakfast Nook	8'8" x 8'9"	59 sq. ft	Yes
10	Bedroom	11'2" x 12'8"	142 sq. ft	Yes
11	Laundry	6'1" x 8'5"	51 sq. ft	Yes

Home data report

311 6th Street, Corning, Tehama County, California, United States, 96021

#		Dimensions	sqft	Counted as living area
12	Bath	8'4" x 8'4"	47 sq. ft	Yes
13	Hall	14'3" x 6'0"	63 sq. ft	Yes
14	Foyer	4'6" x 12'8"	57 sq. ft	Yes
15	Dining Area	10'5" x 11'9"	122 sq. ft	Yes

1 Floor 1 - Living Room



Dimensions: 15'5" x 17'10"  
Area: 280 sq. ft  
Counted as living area: Yes

Heated: Yes  
Finished: Yes  
Enclosed: Yes  
Contiguous: Yes  
Permitted: Yes  
Wet space: No  
Addition: No  
Conversion: No

2 Floor 1 - Bedroom



Dimensions: 10'0" x 14'8"  
Area: 147 sq. ft  
Counted as living area: Yes

Heated: Yes  
Finished: Yes  
Enclosed: Yes  
Contiguous: Yes  
Permitted: Yes  
Wet space: No  
Addition: No  
Conversion: No

311 6th Street, Corning, Tehama County, California, United States, 96021

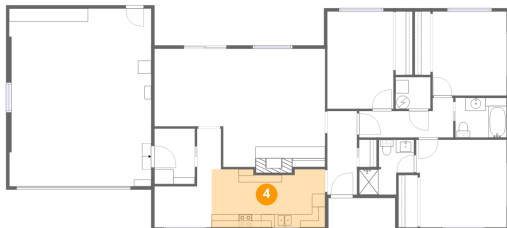
### 3 Floor 1 - Garage



Dimensions: 21'5" x 26'10"  
Area: 571 sq. ft  
Counted as living area: No

Heated: No  
Finished: No  
Enclosed: Yes  
Contiguous: Yes  
Permitted: Yes  
Wet space: No  
Addition: No  
Conversion: No

### 4 Floor 1 - Kitchen



Dimensions: 17'2" x 8'9"  
Area: 145 sq. ft  
Counted as living area: Yes

Heated: Yes  
Finished: Yes  
Enclosed: Yes  
Contiguous: Yes  
Permitted: Yes  
Wet space: No  
Addition: No  
Conversion: No

### 5 Floor 1 - Utility



Dimensions: 5'3" x 4'9"  
Area: 25 sq. ft  
Counted as living area: No

Heated: Yes  
Finished: No  
Enclosed: Yes  
Contiguous: Yes  
Permitted: Yes  
Wet space: No  
Addition: No  
Conversion: No

## 6 Floor 1 - Bath



Dimensions: 7'9" x 6'0"  
Area: 46 sq. ft  
Counted as living area: Yes

Heated: Yes  
Finished: Yes  
Enclosed: Yes  
Contiguous: Yes  
Permitted: Yes  
Wet space: Yes  
Addition: No  
Conversion: No

## 7 Floor 1 - Hall



Dimensions: 3'8" x 6'2"  
Area: 22 sq. ft  
Counted as living area: Yes

Heated: Yes  
Finished: Yes  
Enclosed: Yes  
Contiguous: Yes  
Permitted: Yes  
Wet space: No  
Addition: No  
Conversion: No

## 8 Floor 1 - Primary Bedroom

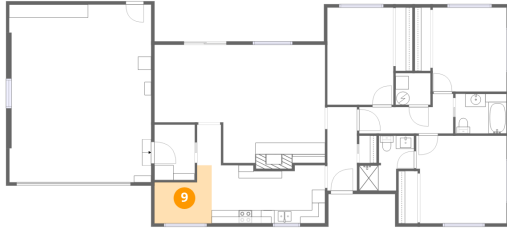


Dimensions: 13'8" x 13'3"  
Area: 177 sq. ft  
Counted as living area: Yes

Heated: Yes  
Finished: Yes  
Enclosed: Yes  
Contiguous: Yes  
Permitted: Yes  
Wet space: No  
Addition: No  
Conversion: No

311 6th Street, Corning, Tehama County, California, United States, 96021

## 9 Floor 1 - Breakfast Nook



Dimensions: 8'8" x 8'9"  
Area: 59 sq. ft  
Counted as living area: Yes

Heated: Yes  
Finished: Yes  
Enclosed: Yes  
Contiguous: Yes  
Permitted: Yes  
Wet space: No  
Addition: No  
Conversion: No

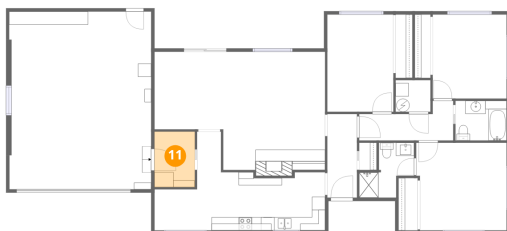
## 10 Floor 1 - Bedroom



Dimensions: 11'2" x 12'8"  
Area: 142 sq. ft  
Counted as living area: Yes

Heated: Yes  
Finished: Yes  
Enclosed: Yes  
Contiguous: Yes  
Permitted: Yes  
Wet space: No  
Addition: No  
Conversion: No

## 11 Floor 1 - Laundry



Dimensions: 6'1" x 8'5"  
Area: 51 sq. ft  
Counted as living area: Yes

Heated: Yes  
Finished: Yes  
Enclosed: Yes  
Contiguous: Yes  
Permitted: Yes  
Wet space: No  
Addition: No  
Conversion: No

## 12 Floor 1 - Bath



Dimensions: 8'4" x 8'4"  
Area: 47 sq. ft  
Counted as living area: Yes

Heated: Yes  
Finished: Yes  
Enclosed: Yes  
Contiguous: Yes  
Permitted: Yes  
Wet space: Yes  
Addition: No  
Conversion: No

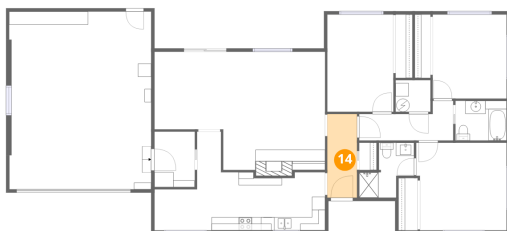
## 13 Floor 1 - Hall



Dimensions: 14'3" x 6'0"  
Area: 63 sq. ft  
Counted as living area: Yes

Heated: Yes  
Finished: Yes  
Enclosed: Yes  
Contiguous: Yes  
Permitted: Yes  
Wet space: No  
Addition: No  
Conversion: No

## 14 Floor 1 - Foyer

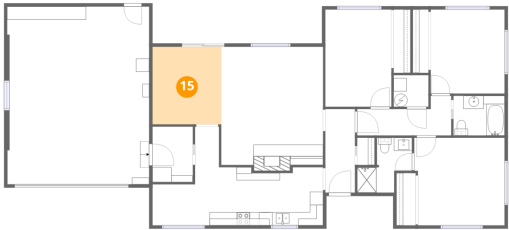


Dimensions: 4'6" x 12'8"  
Area: 57 sq. ft  
Counted as living area: Yes

Heated: Yes  
Finished: Yes  
Enclosed: Yes  
Contiguous: Yes  
Permitted: Yes  
Wet space: No  
Addition: No  
Conversion: No



15 Floor 1 - Dining Area



Dimensions: 10'5" x 11'9"  
Area: 122 sq. ft  
Counted as living area: Yes

Heated: Yes  
Finished: Yes  
Enclosed: Yes  
Contiguous: Yes  
Permitted: Yes  
Wet space: No  
Addition: No  
Conversion: No