

Home data report

**16 Howard Avenue, Holbrook, Norfolk County, Massachusetts,
United States, 02343**



Total Area: 1380 sq. ft

1st Floor: 793 sq. ft, 2nd Floor: 587 sq. ft

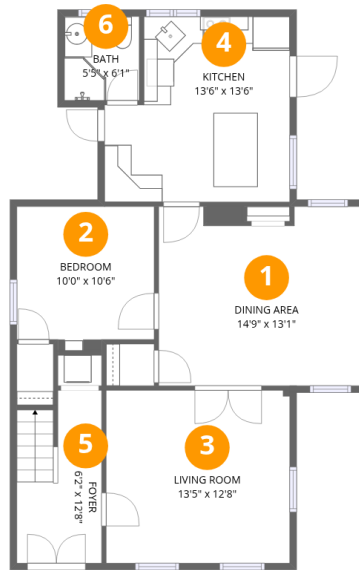
Excluded: Walls: 122 sq. ft

Property summary



Home data report

16 Howard Avenue, Holbrook, Norfolk County, Massachusetts,
United States, 02343



Room dimensions

Floor 1

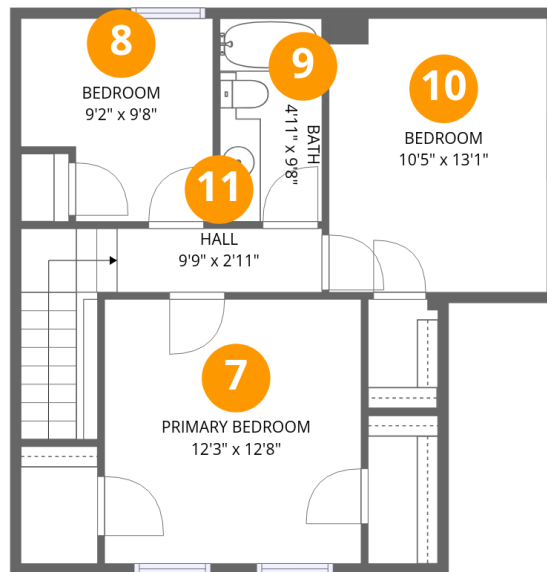
Total:793sqft

Excluded: 0sqft

#		Dimensions	sqft	Counted as living area
1	Dining Area	14'9" x 13'1"	194 sq. ft	Yes
2	Bedroom	10'0" x 10'6"	105 sq. ft	Yes
3	Living Room	13'5" x 12'8"	169 sq. ft	Yes
4	Kitchen	13'6" x 13'6"	182 sq. ft	Yes
5	Foyer	6'2" x 12'8"	78 sq. ft	Yes
6	Bath	5'5" x 6'1"	33 sq. ft	Yes

Home data report

16 Howard Avenue, Holbrook, Norfolk County, Massachusetts, United States, 02343



Room dimensions

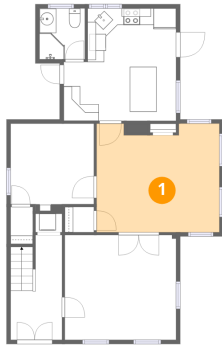
Floor 2

Total:587sqft Excluded: 0sqft

#		Dimensions	sqft	Counted as living area
7	Primary Bedroom	12'3" x 12'8"	155 sq. ft	Yes
8	Bedroom	9'2" x 9'8"	88 sq. ft	Yes
9	Bath	4'11" x 9'8"	47 sq. ft	Yes
10	Bedroom	10'5" x 13'1"	136 sq. ft	Yes
11	Hall	9'9" x 2'11"	29 sq. ft	Yes

16 Howard Avenue, Holbrook, Norfolk County, Massachusetts,
United States, 02343

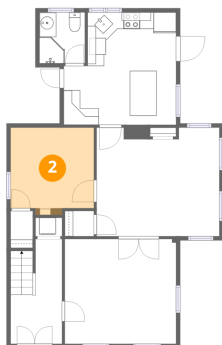
1 Floor 1 - Dining Area



Dimensions: 14'9" x 13'1"
Area: 194 sq. ft
Counted as living area: Yes

Heated: Yes
Finished: Yes
Enclosed: Yes
Contiguous: Yes
Permitted: Yes
Wet space: No
Addition: No
Conversion: No

2 Floor 1 - Bedroom

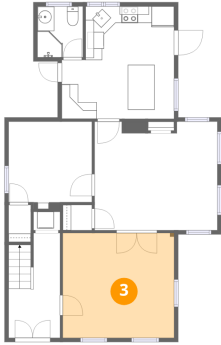


Dimensions: 10'0" x 10'6"
Area: 105 sq. ft
Counted as living area: Yes

Heated: Yes
Finished: Yes
Enclosed: Yes
Contiguous: Yes
Permitted: Yes
Wet space: No
Addition: No
Conversion: No

16 Howard Avenue, Holbrook, Norfolk County, Massachusetts,
United States, 02343

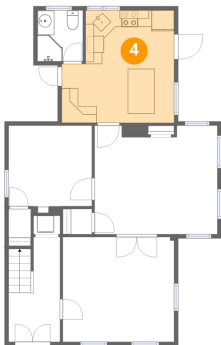
3 Floor 1 - Living Room



Dimensions: 13'5" x 12'8"
Area: 169 sq. ft
Counted as living area: Yes

Heated: Yes
Finished: Yes
Enclosed: Yes
Contiguous: Yes
Permitted: Yes
Wet space: No
Addition: No
Conversion: No

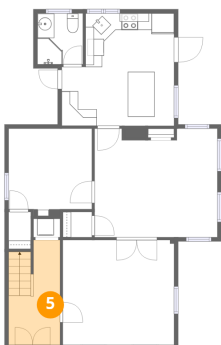
4 Floor 1 - Kitchen



Dimensions: 13'6" x 13'6"
Area: 182 sq. ft
Counted as living area: Yes

Heated: Yes
Finished: Yes
Enclosed: Yes
Contiguous: Yes
Permitted: Yes
Wet space: No
Addition: No
Conversion: No

5 Floor 1 - Foyer

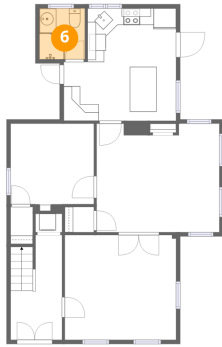


Dimensions: 6'2" x 12'8"
Area: 78 sq. ft
Counted as living area: Yes

Heated: Yes
Finished: Yes
Enclosed: Yes
Contiguous: Yes
Permitted: Yes
Wet space: No
Addition: No
Conversion: No

16 Howard Avenue, Holbrook, Norfolk County, Massachusetts,
United States, 02343

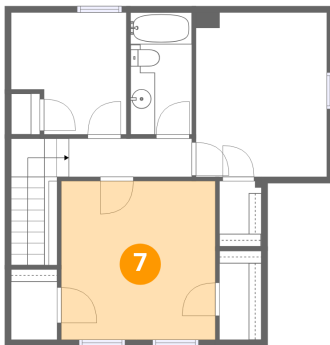
6 Floor 1 - Bath



Dimensions: 5'5" x 6'1"
Area: 33 sq. ft
Counted as living area: Yes

Heated: Yes
Finished: Yes
Enclosed: Yes
Contiguous: Yes
Permitted: Yes
Wet space: Yes
Addition: No
Conversion: No

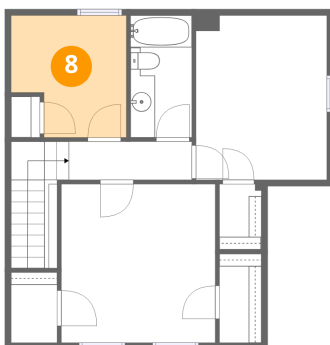
7 Floor 2 - Primary Bedroom



Dimensions: 12'3" x 12'8"
Area: 155 sq. ft
Counted as living area: Yes

Heated: Yes
Finished: Yes
Enclosed: Yes
Contiguous: Yes
Permitted: Yes
Wet space: No
Addition: No
Conversion: No

8 Floor 2 - Bedroom

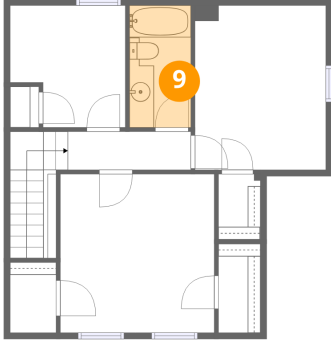


Dimensions: 9'2" x 9'8"
Area: 88 sq. ft
Counted as living area: Yes

Heated: Yes
Finished: Yes
Enclosed: Yes
Contiguous: Yes
Permitted: Yes
Wet space: No
Addition: No
Conversion: No

16 Howard Avenue, Holbrook, Norfolk County, Massachusetts,
United States, 02343

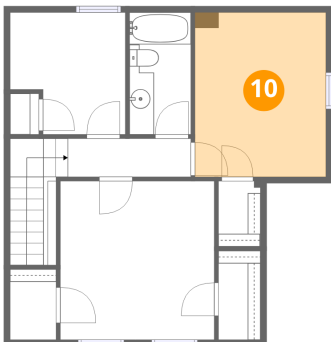
9 Floor 2 - Bath



Dimensions: 4'11" x 9'8"
Area: 47 sq. ft
Counted as living area: Yes

Heated: Yes
Finished: Yes
Enclosed: Yes
Contiguous: Yes
Permitted: Yes
Wet space: Yes
Addition: No
Conversion: No

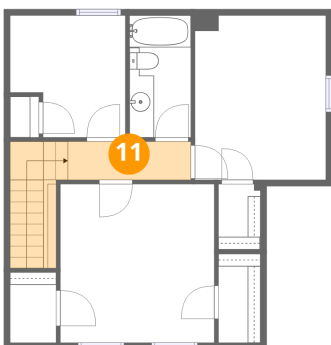
10 Floor 2 - Bedroom



Dimensions: 10'5" x 13'1"
Area: 136 sq. ft
Counted as living area: Yes

Heated: Yes
Finished: Yes
Enclosed: Yes
Contiguous: Yes
Permitted: Yes
Wet space: No
Addition: No
Conversion: No

11 Floor 2 - Hall



Dimensions: 9'9" x 2'11"
Area: 29 sq. ft
Counted as living area: Yes

Heated: Yes
Finished: Yes
Enclosed: Yes
Contiguous: Yes
Permitted: Yes
Wet space: No
Addition: No
Conversion: No