

Home data report

4620 Stonewall Ave, Downers Grove, IL, US




Total Area: 4005 sq. ft

Basement: 1026 sq. ft, 1st Floor: 1389 sq. ft, 2nd Floor: 1590 sq. ft

Excluded: Utility 272 sq. ft, Patio 859 sq. ft, Garage 751 sq. ft, Fireplace 11 sq. ft, Open to below 345 sq. ft, Walls: 345 sq. ft

Property summary

 **3** Floors

 **5** Bedrooms

 **4** Bathrooms

Home data report

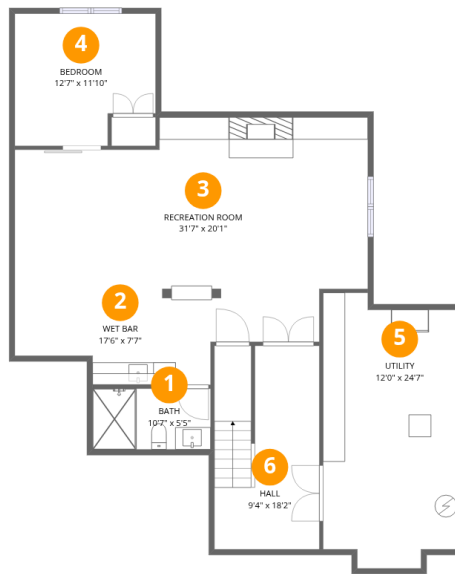
4620 Stonewall Ave, Downers Grove, IL, US

 **1**
Half baths

 **2**
Garages

Home data report

4620 Stonewall Ave, Downers Grove, IL, US



Room dimensions

Floor 1 Below grade

Total: 1026 sqft

Excluded: 272 sqft

#		Dimensions	sqft	Counted as living area
1	Bath	10'7" x 5'5"	57 sq. ft	Yes
2	Wet Bar	17'6" x 7'7"	133 sq. ft	Yes
3	Recreation Room	31'7" x 20'1"	633 sq. ft	Yes
4	Bedroom	12'7" x 11'10"	148 sq. ft	Yes
5	Utility	12'0" x 24'7"	295 sq. ft	No
6	Hall	9'4" x 18'2"	170 sq. ft	Yes

Home data report

4620 Stonewall Ave, Downers Grove, IL, US



Room dimensions

Floor 2

Total: 1389sqft

Excluded: 1621sqft

#		Dimensions	sqft	Counted as living area
7	Living Room	12'0" x 16'9"	201 sq. ft	Yes
8	W.I.C.	4'8" x 3'8"	17 sq. ft	Yes
9	Patio	40'3" x 33'5"	1343 sq. ft	No
10	Dining Room	14'6" x 12'6"	182 sq. ft	Yes
11	Kitchen	14'6" x 19'3"	280 sq. ft	Yes
12	Foyer	9'5" x 19'5"	182 sq. ft	Yes
13	Hall	18'8" x 3'7"	66 sq. ft	Yes
14	Pantry	12'5" x 10'1"	126 sq. ft	Yes
15	Garage	12'11" x 21'5"	276 sq. ft	No
16	Family Room	18'0" x 17'8"	318 sq. ft	Yes
17	Garage	20'2" x 29'5"	594 sq. ft	No

Scan captured on Fri, 20 Mar 2026 16:37:55 GMT

FLOOR PLAN CREATED BY CUBICASA APP. MEASUREMENTS DEEMED HIGHLY RELIABLE BUT NOT GUARANTEED.

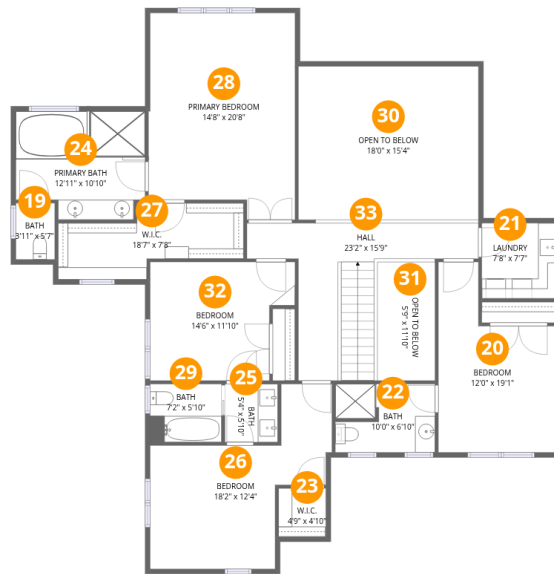
Home data report

4620 Stonewall Ave,Downers Grove,IL,US

#		Dimensions	sqft	Counted as living area
18	Bath	7'0" x 6'8"	47 sq. ft	Yes

Home data report

4620 Stonewall Ave, Downers Grove, IL, US



Room dimensions

Floor 3

Total: 1590sqft

Excluded: 345sqft

#		Dimensions	sqft	Counted as living area
19	Bath	3'11" x 5'7"	22 sq. ft	Yes
20	Bedroom	12'0" x 19'1"	228 sq. ft	Yes
21	Laundry	7'8" x 7'7"	58 sq. ft	Yes
22	Bath	10'0" x 6'10"	68 sq. ft	Yes
23	W.I.C.	4'9" x 4'10"	23 sq. ft	Yes
24	Primary Bath	12'11" x 10'10"	140 sq. ft	Yes
25	Bath	5'4" x 5'10"	31 sq. ft	Yes
26	Bedroom	18'2" x 12'4"	225 sq. ft	Yes
27	W.I.C.	18'7" x 7'8"	142 sq. ft	Yes
28	Primary Bedroom	14'8" x 20'8"	303 sq. ft	Yes
29	Bath	7'2" x 5'10"	42 sq. ft	Yes

Scan captured on Fri, 20 Mar 2026 16:37:55 GMT

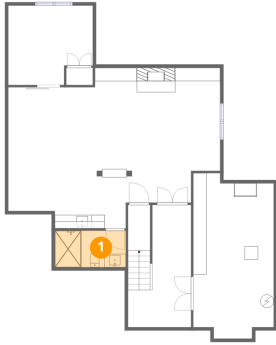
FLOOR PLAN CREATED BY CUBICASA APP. MEASUREMENTS DEEMED HIGHLY RELIABLE BUT NOT GUARANTEED.

Home data report

4620 Stonewall Ave, Downers Grove, IL, US

#		Dimensions	sqft	Counted as living area
30	Open To Below	18'0" x 15'4"	277 sq. ft	No
31	Open To Below	5'9" x 11'10"	68 sq. ft	No
32	Bedroom	14'6" x 11'10"	172 sq. ft	Yes
33	Hall	23'2" x 15'9"	365 sq. ft	Yes

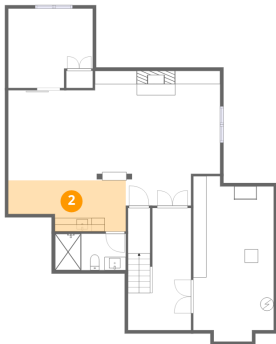
1 Floor 1 - Bath



Dimensions: 10'7" x 5'5"
Area: 57 sq. ft
Counted as living area: Yes

Heated: Yes
Finished: Yes
Enclosed: Yes
Contiguous: Yes
Permitted: Yes
Wet space: Yes
Addition: No
Conversion: No

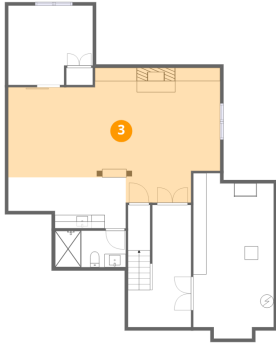
2 Floor 1 - Wet Bar



Dimensions: 17'6" x 7'7"
Area: 133 sq. ft
Counted as living area: Yes

Heated: Yes
Finished: Yes
Enclosed: Yes
Contiguous: Yes
Permitted: Yes
Wet space: No
Addition: No
Conversion: No

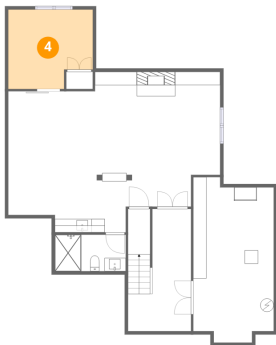
3 Floor 1 - Recreation Room



Dimensions: 31'7" x 20'1"
Area: 633 sq. ft
Counted as living area: Yes

Heated: Yes
Finished: Yes
Enclosed: Yes
Contiguous: Yes
Permitted: Yes
Wet space: No
Addition: No
Conversion: No

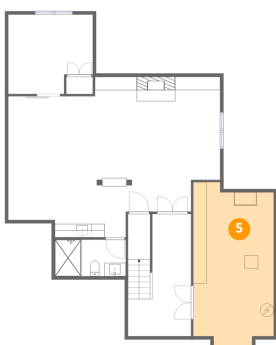
4 Floor 1 - Bedroom



Dimensions: 12'7" x 11'10"
Area: 148 sq. ft
Counted as living area: Yes

Heated: Yes
Finished: Yes
Enclosed: Yes
Contiguous: Yes
Permitted: Yes
Wet space: No
Addition: No
Conversion: No

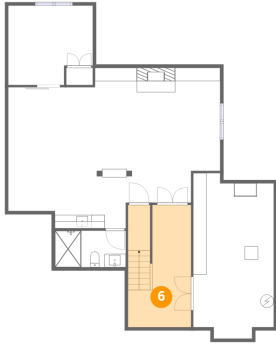
5 Floor 1 - Utility



Dimensions: 12'0" x 24'7"
Area: 295 sq. ft
Counted as living area: No

Heated: Yes
Finished: No
Enclosed: Yes
Contiguous: Yes
Permitted: Yes
Wet space: No
Addition: No
Conversion: No

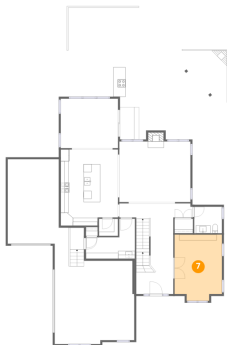
6 Floor 1 - Hall



Dimensions: 9'4" x 18'2"
Area: 170 sq. ft
Counted as living area: Yes

Heated: Yes
Finished: Yes
Enclosed: Yes
Contiguous: Yes
Permitted: Yes
Wet space: No
Addition: No
Conversion: No

7 Floor 2 - Living Room



Dimensions: 12'0" x 16'9"
Area: 201 sq. ft
Counted as living area: Yes

Heated: Yes
Finished: Yes
Enclosed: Yes
Contiguous: Yes
Permitted: Yes
Wet space: No
Addition: No
Conversion: No

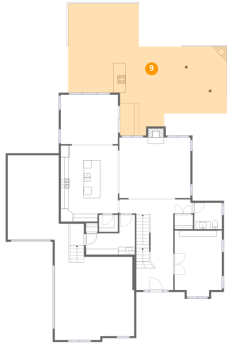
8 Floor 2 - W.I.C.



Dimensions: 4'8" x 3'8"
Area: 17 sq. ft
Counted as living area: Yes

Heated: Yes
Finished: Yes
Enclosed: Yes
Contiguous: Yes
Permitted: Yes
Wet space: No
Addition: No
Conversion: No

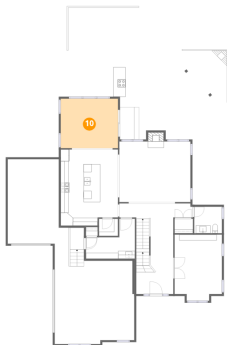
9 Floor 2 - Patio



Dimensions: 40'3" x 33'5"
Area: 1343 sq. ft
Counted as living area: No

Heated: No
Finished: No
Enclosed: No
Contiguous: Yes
Permitted: Yes
Wet space: No
Addition: No
Conversion: No

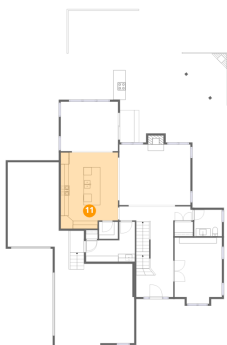
10 Floor 2 - Dining Room



Dimensions: 14'6" x 12'6"
Area: 182 sq. ft
Counted as living area: Yes

Heated: Yes
Finished: Yes
Enclosed: Yes
Contiguous: Yes
Permitted: Yes
Wet space: No
Addition: No
Conversion: No

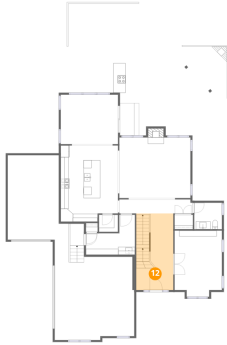
11 Floor 2 - Kitchen



Dimensions: 14'6" x 19'3"
Area: 280 sq. ft
Counted as living area: Yes

Heated: Yes
Finished: Yes
Enclosed: Yes
Contiguous: Yes
Permitted: Yes
Wet space: No
Addition: No
Conversion: No

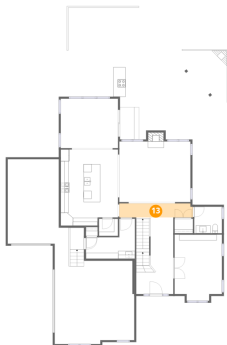
12 Floor 2 - Foyer



Dimensions: 9'5" x 19'5"
Area: 182 sq. ft
Counted as living area: Yes

Heated: Yes
Finished: Yes
Enclosed: Yes
Contiguous: Yes
Permitted: Yes
Wet space: No
Addition: No
Conversion: No

13 Floor 2 - Hall



Dimensions: 18'8" x 3'7"
Area: 66 sq. ft
Counted as living area: Yes

Heated: Yes
Finished: Yes
Enclosed: Yes
Contiguous: Yes
Permitted: Yes
Wet space: No
Addition: No
Conversion: No

14 Floor 2 - Pantry



Dimensions: 12'5" x 10'1"
Area: 126 sq. ft
Counted as living area: Yes

Heated: Yes
Finished: Yes
Enclosed: Yes
Contiguous: Yes
Permitted: Yes
Wet space: No
Addition: No
Conversion: No

15 Floor 2 - Garage



Dimensions: 12'11" x 21'5"
Area: 276 sq. ft
Counted as living area: No

Heated: No
Finished: No
Enclosed: Yes
Contiguous: Yes
Permitted: Yes
Wet space: No
Addition: No
Conversion: No

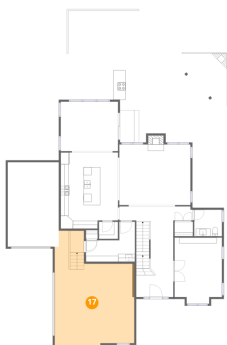
16 Floor 2 - Family Room



Dimensions: 18'0" x 17'8"
Area: 318 sq. ft
Counted as living area: Yes

Heated: Yes
Finished: Yes
Enclosed: Yes
Contiguous: Yes
Permitted: Yes
Wet space: No
Addition: No
Conversion: No

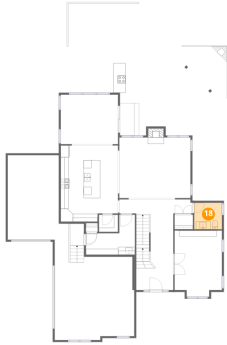
17 Floor 2 - Garage



Dimensions: 20'2" x 29'5"
Area: 594 sq. ft
Counted as living area: No

Heated: No
Finished: No
Enclosed: Yes
Contiguous: Yes
Permitted: Yes
Wet space: No
Addition: No
Conversion: No

18 Floor 2 - Bath



Dimensions: 7'0" x 6'8"
Area: 47 sq. ft
Counted as living area: Yes

Heated: Yes
Finished: Yes
Enclosed: Yes
Contiguous: Yes
Permitted: Yes
Wet space: Yes
Addition: No
Conversion: No

19 Floor 3 - Bath



Dimensions: 3'11" x 5'7"
Area: 22 sq. ft
Counted as living area: Yes

Heated: Yes
Finished: Yes
Enclosed: Yes
Contiguous: Yes
Permitted: Yes
Wet space: Yes
Addition: No
Conversion: No

20 Floor 3 - Bedroom



Dimensions: 12'0" x 19'1"
Area: 228 sq. ft
Counted as living area: Yes

Heated: Yes
Finished: Yes
Enclosed: Yes
Contiguous: Yes
Permitted: Yes
Wet space: No
Addition: No
Conversion: No

21 Floor 3 - Laundry



Dimensions: 7'8" x 7'7"
Area: 58 sq. ft
Counted as living area: Yes

Heated: Yes
Finished: Yes
Enclosed: Yes
Contiguous: Yes
Permitted: Yes
Wet space: No
Addition: No
Conversion: No

22 Floor 3 - Bath



Dimensions: 10'0" x 6'10"
Area: 68 sq. ft
Counted as living area: Yes

Heated: Yes
Finished: Yes
Enclosed: Yes
Contiguous: Yes
Permitted: Yes
Wet space: Yes
Addition: No
Conversion: No

23 Floor 3 - W.I.C.



Dimensions: 4'9" x 4'10"
Area: 23 sq. ft
Counted as living area: Yes

Heated: Yes
Finished: Yes
Enclosed: Yes
Contiguous: Yes
Permitted: Yes
Wet space: No
Addition: No
Conversion: No

24 Floor 3 - Primary Bath



Dimensions: 12'11" x 10'10"
Area: 140 sq. ft
Counted as living area: Yes

Heated: Yes
Finished: Yes
Enclosed: Yes
Contiguous: Yes
Permitted: Yes
Wet space: Yes
Addition: No
Conversion: No

25 Floor 3 - Bath



Dimensions: 5'4" x 5'10"
Area: 31 sq. ft
Counted as living area: Yes

Heated: Yes
Finished: Yes
Enclosed: Yes
Contiguous: Yes
Permitted: Yes
Wet space: Yes
Addition: No
Conversion: No

26 Floor 3 - Bedroom



Dimensions: 18'2" x 12'4"
Area: 225 sq. ft
Counted as living area: Yes

Heated: Yes
Finished: Yes
Enclosed: Yes
Contiguous: Yes
Permitted: Yes
Wet space: No
Addition: No
Conversion: No

27 Floor 3 - W.I.C.



Dimensions: 18'7" x 7'8"
Area: 142 sq. ft
Counted as living area: Yes

Heated: Yes
Finished: Yes
Enclosed: Yes
Contiguous: Yes
Permitted: Yes
Wet space: No
Addition: No
Conversion: No

28 Floor 3 - Primary Bedroom



Dimensions: 14'8" x 20'8"
Area: 303 sq. ft
Counted as living area: Yes

Heated: Yes
Finished: Yes
Enclosed: Yes
Contiguous: Yes
Permitted: Yes
Wet space: No
Addition: No
Conversion: No

29 Floor 3 - Bath



Dimensions: 7'2" x 5'10"
Area: 42 sq. ft
Counted as living area: Yes

Heated: Yes
Finished: Yes
Enclosed: Yes
Contiguous: Yes
Permitted: Yes
Wet space: Yes
Addition: No
Conversion: No

30 Floor 3 - Open To Below



Dimensions: 18'0" x 15'4"
Area: 277 sq. ft
Counted as living area: No

Heated: No
Finished: No
Enclosed: No
Contiguous: Yes
Permitted: No
Wet space: No
Addition: No
Conversion: No

31 Floor 3 - Open To Below



Dimensions: 5'9" x 11'10"
Area: 68 sq. ft
Counted as living area: No

Heated: No
Finished: No
Enclosed: No
Contiguous: Yes
Permitted: No
Wet space: No
Addition: No
Conversion: No

32 Floor 3 - Bedroom



Dimensions: 14'6" x 11'10"
Area: 172 sq. ft
Counted as living area: Yes

Heated: Yes
Finished: Yes
Enclosed: Yes
Contiguous: Yes
Permitted: Yes
Wet space: No
Addition: No
Conversion: No

33 Floor 3 - Hall



Dimensions: 23'2" x 15'9"
Area: 365 sq. ft
Counted as living area: Yes

Heated: Yes
Finished: Yes
Enclosed: Yes
Contiguous: Yes
Permitted: Yes
Wet space: No
Addition: No
Conversion: No