

Home data report

910 Sherman Parkway, Belton, Cass County, Missouri, United States, 64012




Total Area: 3068 sq. ft

Basement: 1230 sq. ft, 1st Floor: 1838 sq. ft

Excluded: Utility 169 sq. ft, Storage 121 sq. ft, Garage 515 sq. ft, Walls: 221 sq. ft

Property summary

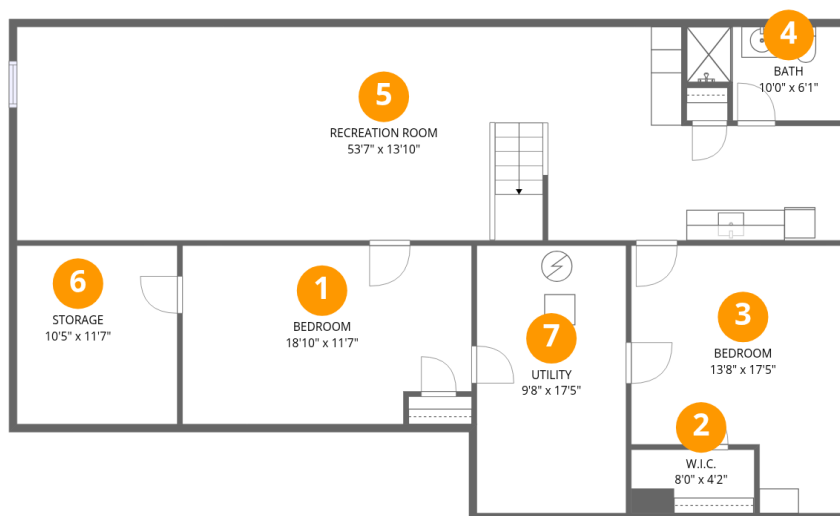
 **2** Floors

 **4** Bedrooms

 **3** Bathrooms

 **1** Garages

910 Sherman Parkway, Belton, Cass County, Missouri, United States, 64012



Room dimensions

Floor 1 Below grade

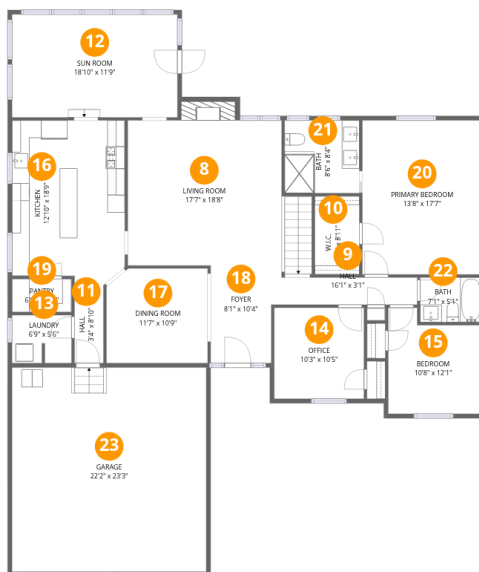
Total:1230sqft

Excluded: 290sqft

| # | | Dimensions | sqft | Counted as living area |
|---|-----------------|----------------|------------|------------------------|
| 1 | Bedroom | 18'10" x 11'7" | 218 sq. ft | Yes |
| 2 | W.I.C. | 8'0" x 4'2" | 33 sq. ft | Yes |
| 3 | Bedroom | 13'8" x 17'5" | 237 sq. ft | Yes |
| 4 | Bath | 10'0" x 6'1" | 61 sq. ft | Yes |
| 5 | Recreation Room | 53'7" x 13'10" | 740 sq. ft | Yes |
| 6 | Storage | 10'5" x 11'7" | 121 sq. ft | No |
| 7 | Utility | 9'8" x 17'5" | 169 sq. ft | No |

Home data report

910 Sherman Parkway, Belton, Cass County, Missouri, United States, 64012



Room dimensions

Floor 2

Total:1838sqft

Excluded: 515sqft

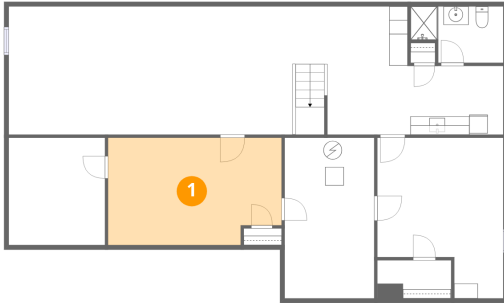
| # | | Dimensions | sqft | Counted as living area |
|----|-------------|----------------|------------|------------------------|
| 8 | Living Room | 17'7" x 18'8" | 328 sq. ft | Yes |
| 9 | Hall | 16'1" x 3'1" | 50 sq. ft | Yes |
| 10 | W.I.C. | 5'1" x 8'11" | 45 sq. ft | Yes |
| 11 | Hall | 3'4" x 8'10" | 29 sq. ft | Yes |
| 12 | Sun Room | 18'10" x 11'9" | 221 sq. ft | Yes |
| 13 | Laundry | 6'9" x 5'6" | 37 sq. ft | Yes |
| 14 | Office | 10'3" x 10'5" | 106 sq. ft | Yes |
| 15 | Bedroom | 10'8" x 12'1" | 129 sq. ft | Yes |
| 16 | Kitchen | 12'10" x 18'9" | 241 sq. ft | Yes |
| 17 | Dining Room | 11'7" x 10'9" | 124 sq. ft | Yes |
| 18 | Foyer | 8'1" x 10'4" | 84 sq. ft | Yes |

Home data report

910 Sherman Parkway, Belton, Cass County, Missouri, United States, 64012

| # | | Dimensions | sqft | Counted as living area |
|----|-----------------|---------------|------------|------------------------|
| 19 | Pantry | 6'9" x 3'10" | 26 sq. ft | Yes |
| 20 | Primary Bedroom | 13'8" x 17'7" | 239 sq. ft | Yes |
| 21 | Bath | 8'6" x 8'4" | 71 sq. ft | Yes |
| 22 | Bath | 7'1" x 5'1" | 36 sq. ft | Yes |
| 23 | Garage | 22'2" x 23'3" | 514 sq. ft | No |

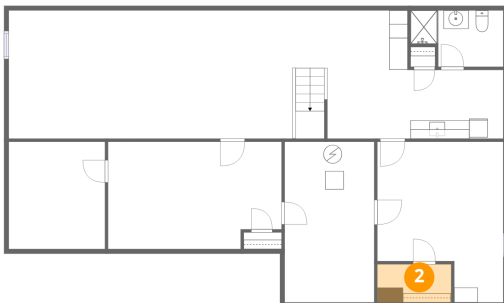
1 Floor 1 - Bedroom



Dimensions: 18'10" x 11'7"
Area: 218 sq. ft
Counted as living area: Yes

Heated: Yes
Finished: Yes
Enclosed: Yes
Contiguous: Yes
Permitted: Yes
Wet space: No
Addition: No
Conversion: No

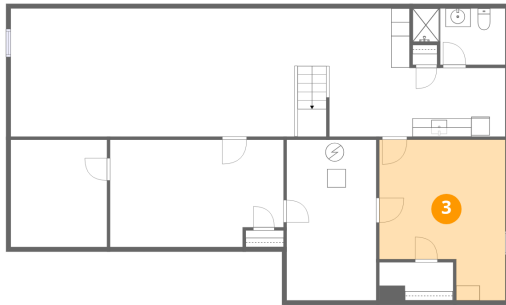
2 Floor 1 - W.I.C.



Dimensions: 8'0" x 4'2"
Area: 33 sq. ft
Counted as living area: Yes

Heated: Yes
Finished: Yes
Enclosed: Yes
Contiguous: Yes
Permitted: Yes
Wet space: No
Addition: No
Conversion: No

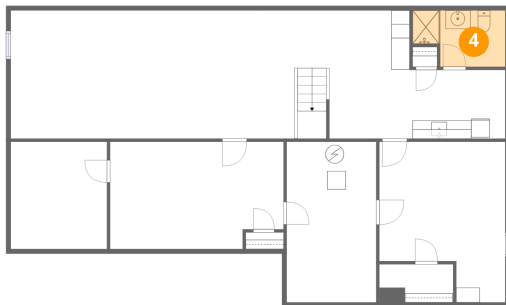
3 Floor 1 - Bedroom



Dimensions: 13'8" x 17'5"
Area: 237 sq. ft
Counted as living area: Yes

Heated: Yes
Finished: Yes
Enclosed: Yes
Contiguous: Yes
Permitted: Yes
Wet space: No
Addition: No
Conversion: No

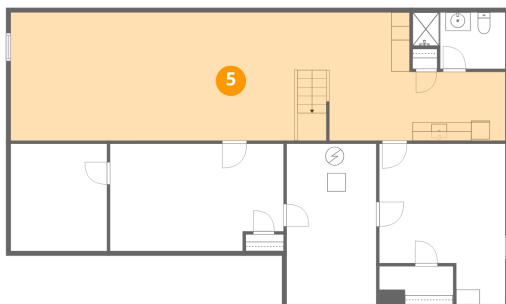
4 Floor 1 - Bath



Dimensions: 10'0" x 6'1"
Area: 61 sq. ft
Counted as living area: Yes

Heated: Yes
Finished: Yes
Enclosed: Yes
Contiguous: Yes
Permitted: Yes
Wet space: Yes
Addition: No
Conversion: No

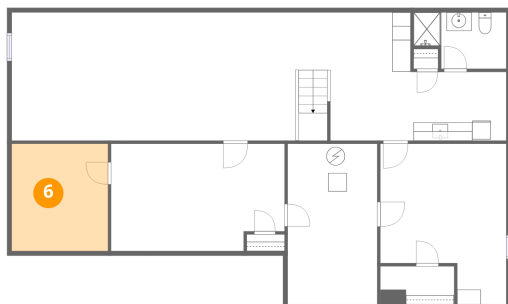
5 Floor 1 - Recreation Room



Dimensions: 53'7" x 13'10"
Area: 740 sq. ft
Counted as living area: Yes

Heated: Yes
Finished: Yes
Enclosed: Yes
Contiguous: Yes
Permitted: Yes
Wet space: No
Addition: No
Conversion: No

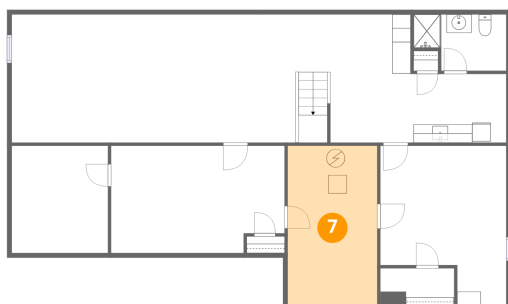
6 Floor 1 - Storage



Dimensions: 10'5" x 11'7"
Area: 121 sq. ft
Counted as living area: No

Heated: No
Finished: No
Enclosed: No
Contiguous: Yes
Permitted: Yes
Wet space: No
Addition: No
Conversion: No

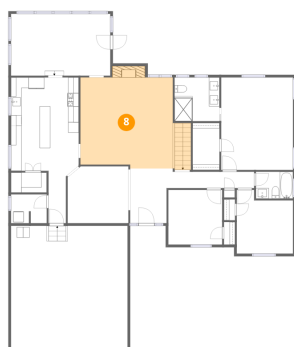
7 Floor 1 - Utility



Dimensions: 9'8" x 17'5"
Area: 169 sq. ft
Counted as living area: No

Heated: Yes
Finished: No
Enclosed: Yes
Contiguous: Yes
Permitted: Yes
Wet space: No
Addition: No
Conversion: No

8 Floor 2 - Living Room



Dimensions: 17'7" x 18'8"
Area: 328 sq. ft
Counted as living area: Yes

Heated: Yes
Finished: Yes
Enclosed: Yes
Contiguous: Yes
Permitted: Yes
Wet space: No
Addition: No
Conversion: No

9 Floor 2 - Hall



Dimensions: 16'1" x 3'1"
Area: 50 sq. ft
Counted as living area: Yes

Heated: Yes
Finished: Yes
Enclosed: Yes
Contiguous: Yes
Permitted: Yes
Wet space: No
Addition: No
Conversion: No

10 Floor 2 - W.I.C.



Dimensions: 5'1" x 8'11"
Area: 45 sq. ft
Counted as living area: Yes

Heated: Yes
Finished: Yes
Enclosed: Yes
Contiguous: Yes
Permitted: Yes
Wet space: No
Addition: No
Conversion: No

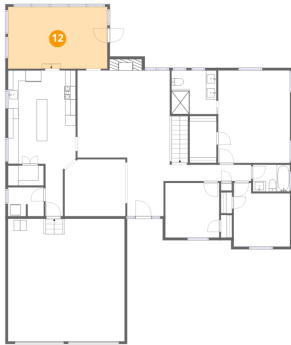
11 Floor 2 - Hall



Dimensions: 3'4" x 8'10"
Area: 29 sq. ft
Counted as living area: Yes

Heated: Yes
Finished: Yes
Enclosed: Yes
Contiguous: Yes
Permitted: Yes
Wet space: No
Addition: No
Conversion: No

12 Floor 2 - Sun Room



Dimensions: 18'10" x 11'9"
Area: 221 sq. ft
Counted as living area: Yes

Heated: Yes
Finished: Yes
Enclosed: Yes
Contiguous: Yes
Permitted: Yes
Wet space: No
Addition: No
Conversion: No

13 Floor 2 - Laundry



Dimensions: 6'9" x 5'6"
Area: 37 sq. ft
Counted as living area: Yes

Heated: Yes
Finished: Yes
Enclosed: Yes
Contiguous: Yes
Permitted: Yes
Wet space: No
Addition: No
Conversion: No

14 Floor 2 - Office



Dimensions: 10'3" x 10'5"
Area: 106 sq. ft
Counted as living area: Yes

Heated: Yes
Finished: Yes
Enclosed: Yes
Contiguous: Yes
Permitted: Yes
Wet space: No
Addition: No
Conversion: No

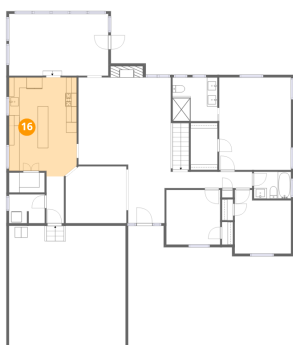
15 Floor 2 - Bedroom



Dimensions: 10'8" x 12'1"
Area: 129 sq. ft
Counted as living area: Yes

Heated: Yes
Finished: Yes
Enclosed: Yes
Contiguous: Yes
Permitted: Yes
Wet space: No
Addition: No
Conversion: No

16 Floor 2 - Kitchen



Dimensions: 12'10" x 18'9"
Area: 241 sq. ft
Counted as living area: Yes

Heated: Yes
Finished: Yes
Enclosed: Yes
Contiguous: Yes
Permitted: Yes
Wet space: No
Addition: No
Conversion: No

17 Floor 2 - Dining Room



Dimensions: 11'7" x 10'9"
Area: 124 sq. ft
Counted as living area: Yes

Heated: Yes
Finished: Yes
Enclosed: Yes
Contiguous: Yes
Permitted: Yes
Wet space: No
Addition: No
Conversion: No

18 Floor 2 - Foyer



Dimensions: 8'1" x 10'4"
Area: 84 sq. ft
Counted as living area: Yes

Heated: Yes
Finished: Yes
Enclosed: Yes
Contiguous: Yes
Permitted: Yes
Wet space: No
Addition: No
Conversion: No

19 Floor 2 - Pantry



Dimensions: 6'9" x 3'10"
Area: 26 sq. ft
Counted as living area: Yes

Heated: Yes
Finished: Yes
Enclosed: Yes
Contiguous: Yes
Permitted: Yes
Wet space: No
Addition: No
Conversion: No

20 Floor 2 - Primary Bedroom



Dimensions: 13'8" x 17'7"
Area: 239 sq. ft
Counted as living area: Yes

Heated: Yes
Finished: Yes
Enclosed: Yes
Contiguous: Yes
Permitted: Yes
Wet space: No
Addition: No
Conversion: No

21 Floor 2 - Bath



Dimensions: 8'6" x 8'4"
Area: 71 sq. ft
Counted as living area: Yes

Heated: Yes
Finished: Yes
Enclosed: Yes
Contiguous: Yes
Permitted: Yes
Wet space: Yes
Addition: No
Conversion: No

22 Floor 2 - Bath



Dimensions: 7'1" x 5'1"
Area: 36 sq. ft
Counted as living area: Yes

Heated: Yes
Finished: Yes
Enclosed: Yes
Contiguous: Yes
Permitted: Yes
Wet space: Yes
Addition: No
Conversion: No

23 Floor 2 - Garage



Dimensions: 22'2" x 23'3"
Area: 514 sq. ft
Counted as living area: No

Heated: No
Finished: No
Enclosed: Yes
Contiguous: Yes
Permitted: Yes
Wet space: No
Addition: No
Conversion: No