

Home data report

1550 Vernon Lane, Blue Ridge, Virginia 24064, United States



Total Area: 1306 sq. ft

Basement: 0 sq. ft, 1st Floor: 1306 sq. ft

Excluded: Basement 1148 sq. ft, Patio 169 sq. ft, Carport 776 sq. ft, Deck 430 sq. ft, Porch 277 sq. ft, Fireplace 13 sq. ft, Walls: 176 sq. ft

Property summary



2 Floors



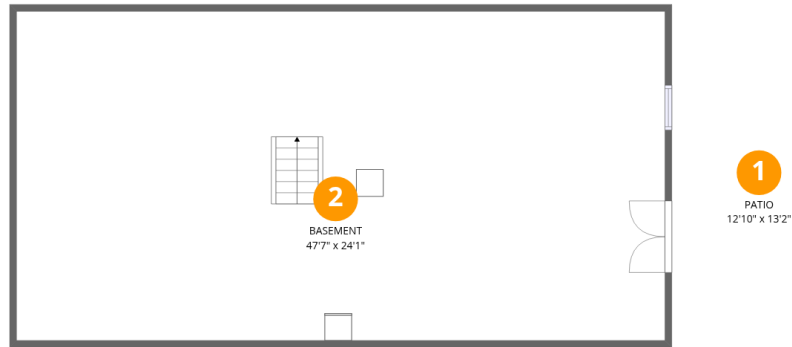
3 Bedrooms



2 Bathrooms

Home data report

1550 Vernon Lane, Blue Ridge, Virginia 24064, United States



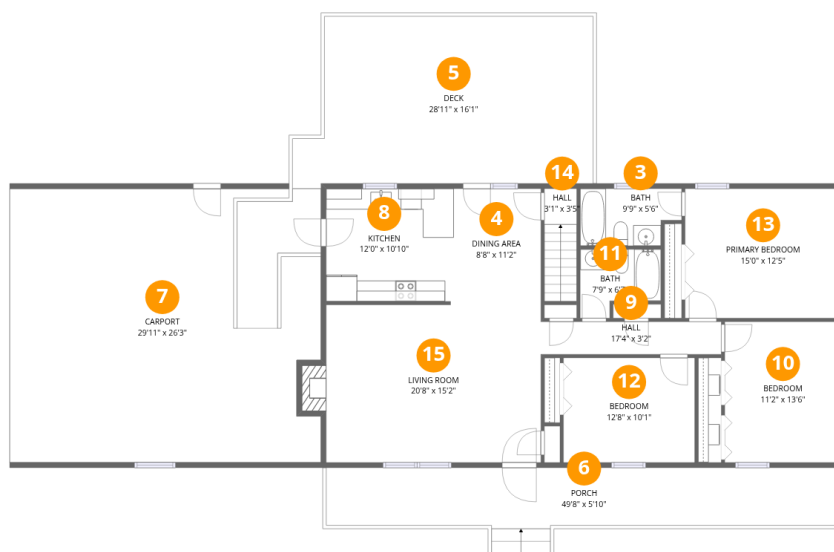
Room dimensions

Floor 1 Below grade

Total:0sqft

Excluded: 1317sqft

#		Dimensions	sqft	Counted as living area
1	Patio	12'10" x 13'2"	169 sq. ft	No
2	Basement	47'7" x 24'1"	1148 sq. ft	No



Room dimensions

Floor 2

Total:1306sqft

Excluded: 1496sqft

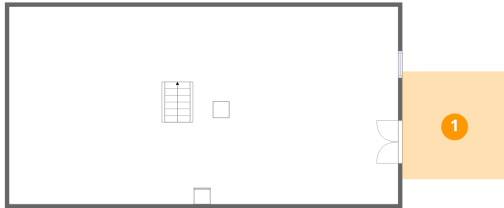
#		Dimensions	sqft	Counted as living area
3	Bath	9'9" x 5'6"	49 sq. ft	Yes
4	Dining Area	8'8" x 11'2"	97 sq. ft	Yes
5	Deck	28'11" x 16'1"	430 sq. ft	No
6	Porch	49'8" x 5'10"	277 sq. ft	No
7	Carport	29'11" x 26'3"	776 sq. ft	No
8	Kitchen	12'0" x 10'10"	130 sq. ft	Yes
9	Hall	17'4" x 3'2"	55 sq. ft	Yes
10	Bedroom	11'2" x 13'6"	152 sq. ft	Yes
11	Bath	7'9" x 6'7"	43 sq. ft	Yes
12	Bedroom	12'8" x 10'11"	127 sq. ft	Yes
13	Primary Bedroom	15'0" x 12'5"	187 sq. ft	Yes

Home data report

1550 Vernon Lane, Blue Ridge, Virginia 24064, United States

#		Dimensions	sqft	Counted as living area
14	Hall	3'1" x 3'5"	34 sq. ft	Yes
15	Living Room	20'8" x 15'2"	323 sq. ft	Yes

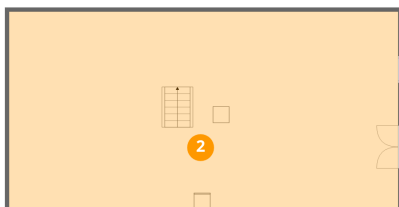
1 Floor 1 - Patio



Dimensions: 12'10" x 13'2"
Area: 169 sq. ft
Counted as living area: No

Heated: No
Finished: No
Enclosed: No
Contiguous: Yes
Permitted: Yes
Wet space: No
Addition: No
Conversion: No

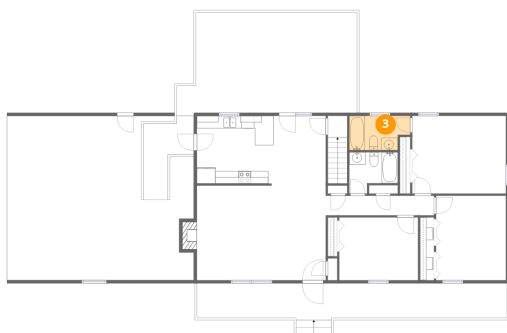
2 Floor 1 - Basement



Dimensions: 47'7" x 24'1"
Area: 1148 sq. ft
Counted as living area: No

Heated: Yes
Finished: No
Enclosed: Yes
Contiguous: Yes
Permitted: Yes
Wet space: No
Addition: No
Conversion: No

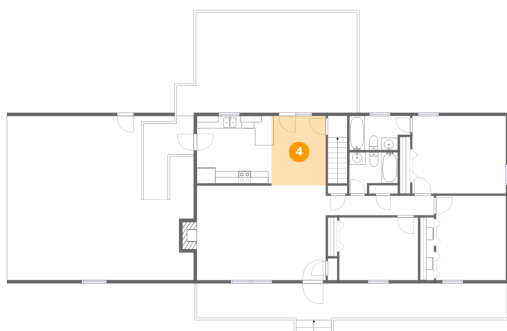
3 Floor 2 - Bath



Dimensions: 9'9" x 5'6"
Area: 49 sq. ft
Counted as living area: Yes

Heated: Yes
Finished: Yes
Enclosed: Yes
Contiguous: Yes
Permitted: Yes
Wet space: Yes
Addition: No
Conversion: No

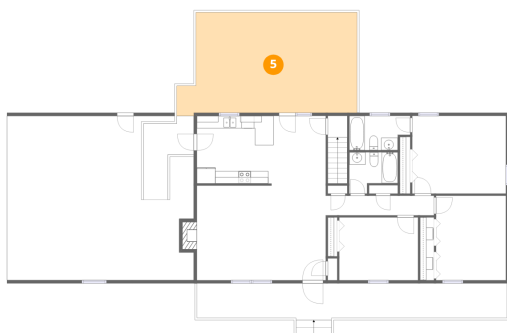
4 Floor 2 - Dining Area



Dimensions: 8'8" x 11'2"
Area: 97 sq. ft
Counted as living area: Yes

Heated: Yes
Finished: Yes
Enclosed: Yes
Contiguous: Yes
Permitted: Yes
Wet space: No
Addition: No
Conversion: No

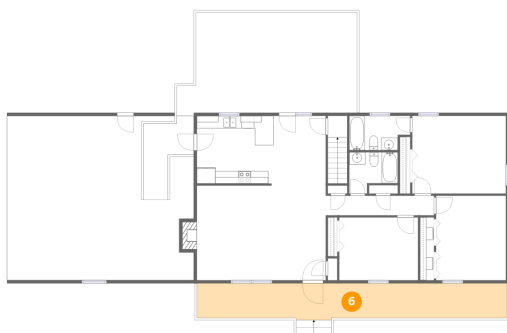
5 Floor 2 - Deck



Dimensions: 28'11" x 16'1"
Area: 430 sq. ft
Counted as living area: No

Heated: No
Finished: No
Enclosed: No
Contiguous: Yes
Permitted: Yes
Wet space: No
Addition: No
Conversion: No

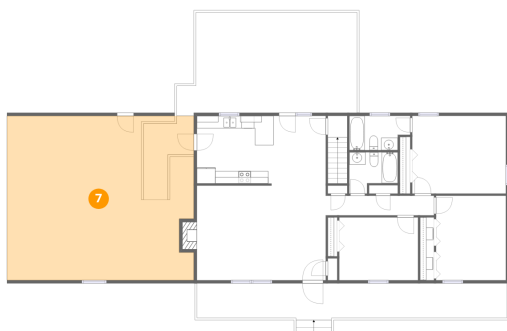
6 Floor 2 - Porch



Dimensions: 49'8" x 5'10"
Area: 277 sq. ft
Counted as living area: No

Heated: No
Finished: No
Enclosed: No
Contiguous: Yes
Permitted: Yes
Wet space: No
Addition: No
Conversion: No

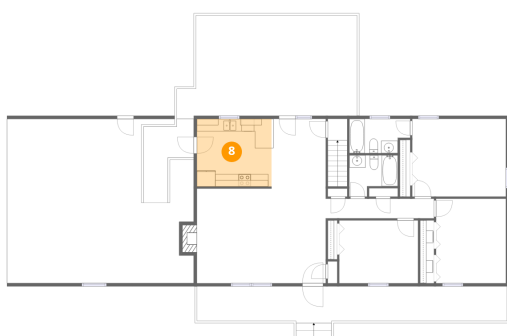
7 Floor 2 - Carport



Dimensions: 29'11" x 26'3"
Area: 776 sq. ft
Counted as living area: No

Heated: No
Finished: Yes
Enclosed: No
Contiguous: Yes
Permitted: Yes
Wet space: No
Addition: No
Conversion: No

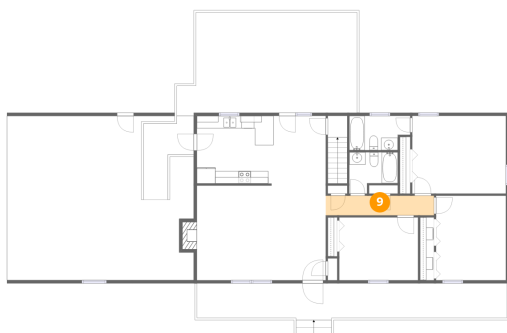
8 Floor 2 - Kitchen



Dimensions: 12'0" x 10'10"
Area: 130 sq. ft
Counted as living area: Yes

Heated: Yes
Finished: Yes
Enclosed: Yes
Contiguous: Yes
Permitted: Yes
Wet space: No
Addition: No
Conversion: No

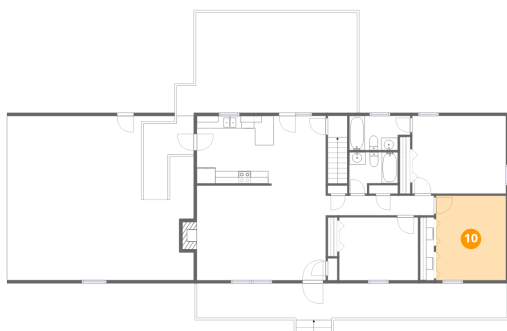
9 Floor 2 - Hall



Dimensions: 17'4" x 3'2"
Area: 55 sq. ft
Counted as living area: Yes

Heated: Yes
Finished: Yes
Enclosed: Yes
Contiguous: Yes
Permitted: Yes
Wet space: No
Addition: No
Conversion: No

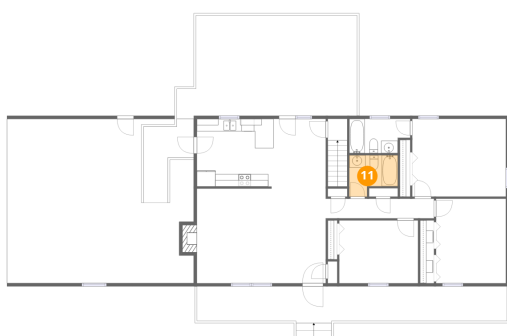
10 Floor 2 - Bedroom



Dimensions: 11'2" x 13'6"
Area: 152 sq. ft
Counted as living area: Yes

Heated: Yes
Finished: Yes
Enclosed: Yes
Contiguous: Yes
Permitted: Yes
Wet space: No
Addition: No
Conversion: No

11 Floor 2 - Bath



Dimensions: 7'9" x 6'7"
Area: 43 sq. ft
Counted as living area: Yes

Heated: Yes
Finished: Yes
Enclosed: Yes
Contiguous: Yes
Permitted: Yes
Wet space: Yes
Addition: No
Conversion: No

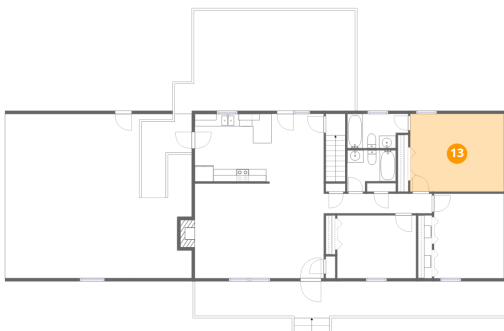
12 Floor 2 - Bedroom



Dimensions: 12'8" x 10'1"
Area: 127 sq. ft
Counted as living area: Yes

Heated: Yes
Finished: Yes
Enclosed: Yes
Contiguous: Yes
Permitted: Yes
Wet space: No
Addition: No
Conversion: No

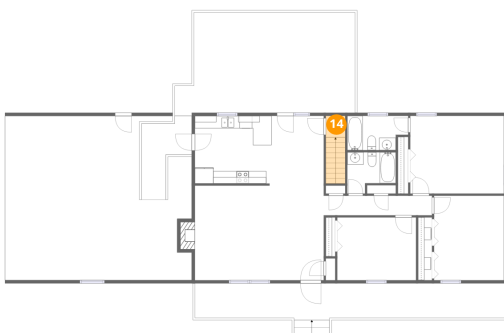
13 Floor 2 - Primary Bedroom



Dimensions: 15'0" x 12'5"
Area: 187 sq. ft
Counted as living area: Yes

Heated: Yes
Finished: Yes
Enclosed: Yes
Contiguous: Yes
Permitted: Yes
Wet space: No
Addition: No
Conversion: No

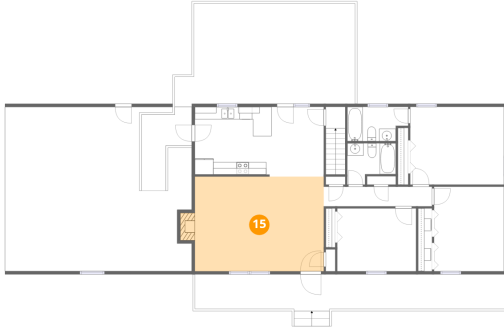
14 Floor 2 - Hall



Dimensions: 3'1" x 3'5"
Area: 34 sq. ft
Counted as living area: Yes

Heated: Yes
Finished: Yes
Enclosed: Yes
Contiguous: Yes
Permitted: Yes
Wet space: No
Addition: No
Conversion: No

15 Floor 2 - Living Room



Dimensions: 20'8" x 15'2"
Area: 323 sq. ft
Counted as living area: Yes

Heated: Yes
Finished: Yes
Enclosed: Yes
Contiguous: Yes
Permitted: Yes
Wet space: No
Addition: No
Conversion: No