

Home data report

5 Ridge Hill Way, Holmdel, Monmouth County, New Jersey,
United States, 07733



Total Area: 5107 sq. ft

Basement: 1449 sq. ft, 1st Floor: 1833 sq. ft, 2nd Floor: 1825 sq. ft

Excluded: Utility 103 sq. ft, Storage 97 sq. ft, Garage 473 sq. ft, Deck 750 sq. ft, Fireplace 12 sq. ft, Open to below 118 sq. ft, Walls: 320 sq. ft

Property summary



3 Floors



5 Bedrooms



3 Bathrooms

Home data report

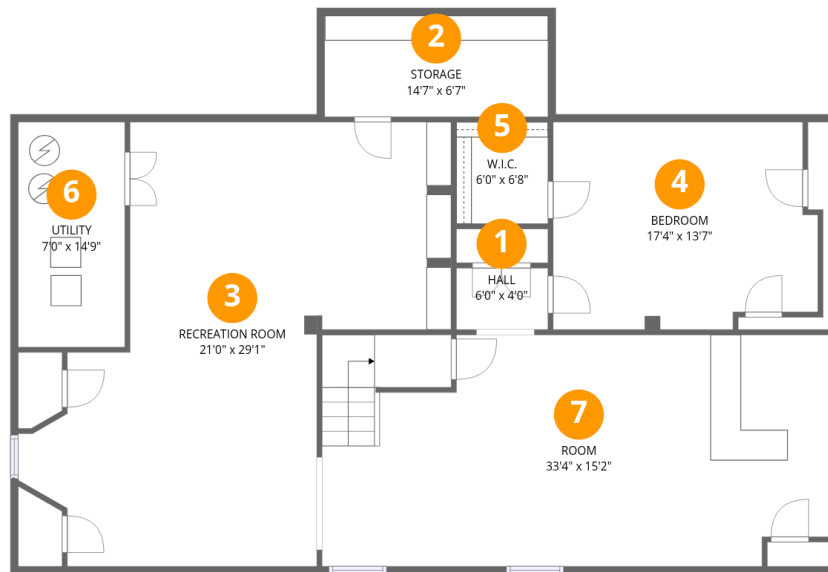
**5 Ridge Hill Way, Holmdel, Monmouth County, New Jersey,
United States, 07733**

 **1**
Half baths

 **1**
Garages

Home data report

5 Ridge Hill Way, Holmdel, Monmouth County, New Jersey,
United States, 07733



Room dimensions

Floor 1 Below grade

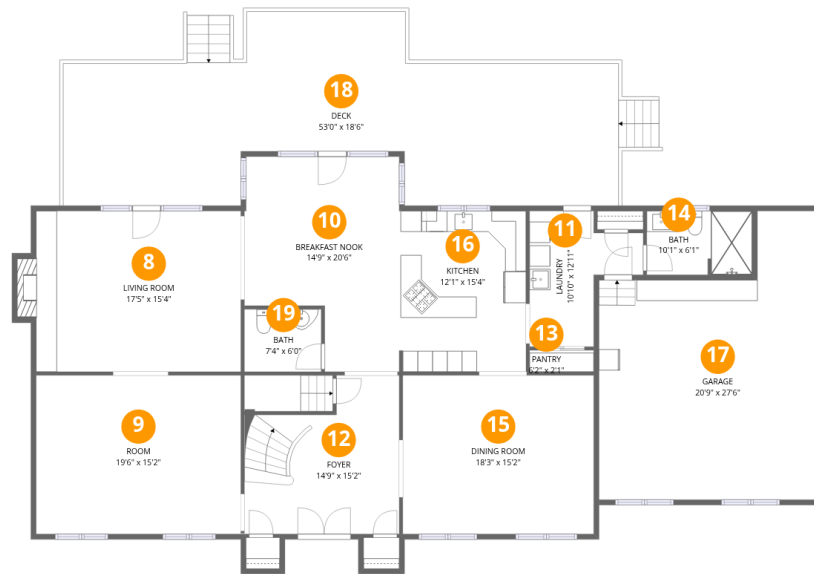
Total:1449sqft

Excluded: 200sqft

#		Dimensions	sqft	Counted as living area
1	Hall	6'0" x 4'0"	24 sq. ft	Yes
2	Storage	14'7" x 6'7"	97 sq. ft	No
3	Recreation Room	21'0" x 29'1"	546 sq. ft	Yes
4	Bedroom	17'4" x 13'7"	223 sq. ft	Yes
5	W.I.C.	6'0" x 6'8"	40 sq. ft	Yes
6	Utility	7'0" x 14'9"	103 sq. ft	No
7	Room	33'4" x 15'2"	494 sq. ft	Yes

Home data report

5 Ridge Hill Way, Holmdel, Monmouth County, New Jersey,
United States, 07733



Room dimensions

Floor 2

Total:1833sqft

Excluded: 1235sqft

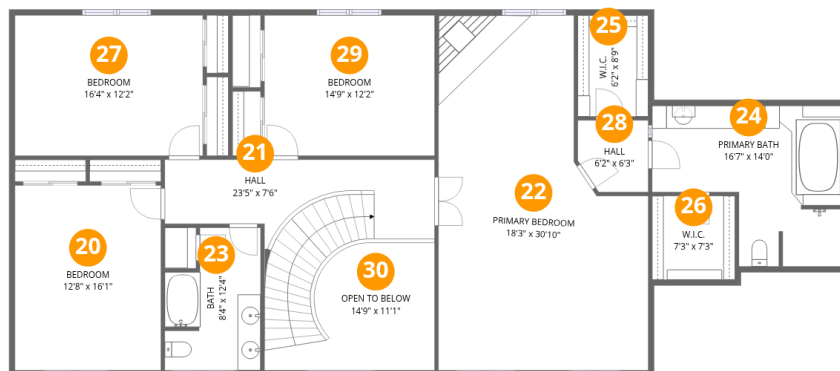
#		Dimensions	sqft	Counted as living area
8	Living Room	17'5" x 15'4"	310 sq. ft	Yes
9	Room	19'6" x 15'2"	296 sq. ft	Yes
10	Breakfast Nook	14'9" x 20'6"	254 sq. ft	Yes
11	Laundry	10'10" x 12'11"	98 sq. ft	Yes
12	Foyer	14'9" x 15'2"	191 sq. ft	Yes
13	Pantry	6'2" x 2'1"	13 sq. ft	Yes
14	Bath	10'1" x 6'1"	61 sq. ft	Yes
15	Dining Room	18'3" x 15'2"	276 sq. ft	Yes
16	Kitchen	12'1" x 15'4"	185 sq. ft	Yes
17	Garage	20'9" x 27'6"	473 sq. ft	No
18	Deck	53'0" x 18'6"	750 sq. ft	No

Home data report

**5 Ridge Hill Way, Holmdel, Monmouth County, New Jersey,
United States, 07733**

#		Dimensions	sqft	Counted as living area
19	Bath	7'4" x 6'0"	44 sq. ft	Yes

5 Ridge Hill Way, Holmdel, Monmouth County, New Jersey, United States, 07733



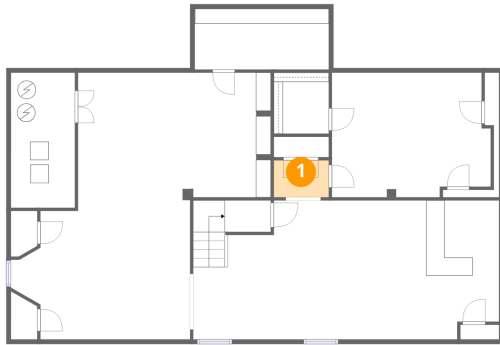
Room dimensions

Floor 3

Total:1825sqft Excluded: 118sqft

#		Dimensions	sqft	Counted as living area
20	Bedroom	12'8" x 16'1"	204 sq. ft	Yes
21	Hall	23'5" x 7'6"	201 sq. ft	Yes
22	Primary Bedroom	18'3" x 30'10"	464 sq. ft	Yes
23	Bath	8'4" x 12'4"	90 sq. ft	Yes
24	Primary Bath	16'7" x 14'0"	181 sq. ft	Yes
25	W.I.C.	6'2" x 8'9"	54 sq. ft	Yes
26	W.I.C.	7'3" x 7'3"	52 sq. ft	Yes
27	Bedroom	16'4" x 12'2"	199 sq. ft	Yes
28	Hall	6'2" x 6'3"	36 sq. ft	Yes
29	Bedroom	14'9" x 12'2"	180 sq. ft	Yes
30	Open To Below	14'9" x 11'1"	118 sq. ft	No

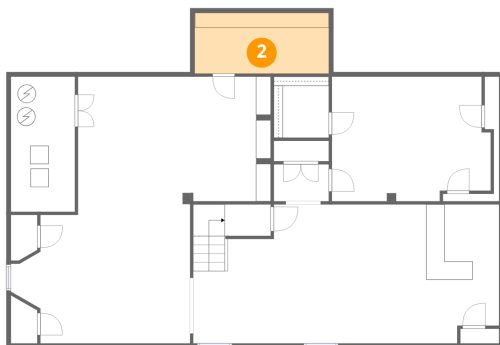
1 Floor 1 - Hall



Dimensions: 6'0" x 4'0"
Area: 24 sq. ft
Counted as living area: Yes

Heated: Yes
Finished: Yes
Enclosed: Yes
Contiguous: Yes
Permitted: Yes
Wet space: No
Addition: No
Conversion: No

2 Floor 1 - Storage

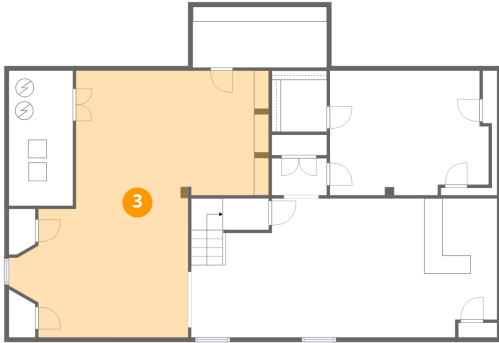


Dimensions: 14'7" x 6'7"
Area: 97 sq. ft
Counted as living area: No

Heated: No
Finished: No
Enclosed: No
Contiguous: Yes
Permitted: Yes
Wet space: No
Addition: No
Conversion: No

5 Ridge Hill Way, Holmdel, Monmouth County, New Jersey,
United States, 07733

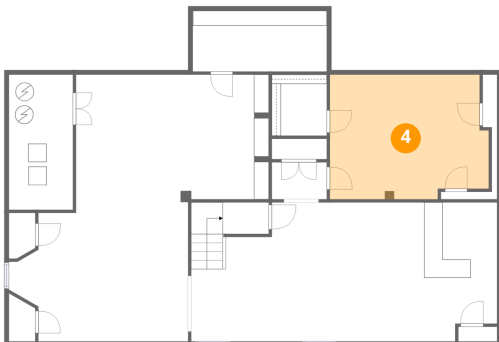
3 Floor 1 - Recreation Room



Dimensions: 21'0" x 29'1"
Area: 546 sq. ft
Counted as living area: Yes

Heated: Yes
Finished: Yes
Enclosed: Yes
Contiguous: Yes
Permitted: Yes
Wet space: No
Addition: No
Conversion: No

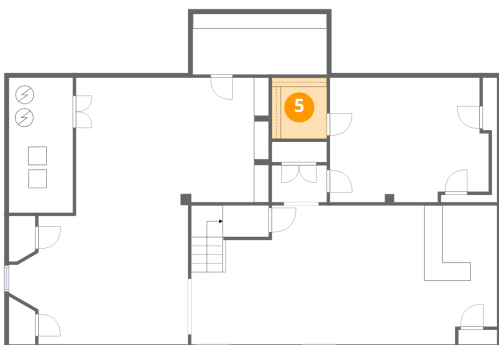
4 Floor 1 - Bedroom



Dimensions: 17'4" x 13'7"
Area: 223 sq. ft
Counted as living area: Yes

Heated: Yes
Finished: Yes
Enclosed: Yes
Contiguous: Yes
Permitted: Yes
Wet space: No
Addition: No
Conversion: No

5 Floor 1 - W.I.C.

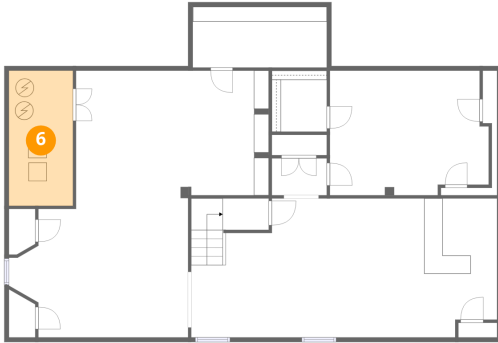


Dimensions: 6'0" x 6'8"
Area: 40 sq. ft
Counted as living area: Yes

Heated: Yes
Finished: Yes
Enclosed: Yes
Contiguous: Yes
Permitted: Yes
Wet space: No
Addition: No
Conversion: No

5 Ridge Hill Way, Holmdel, Monmouth County, New Jersey,
United States, 07733

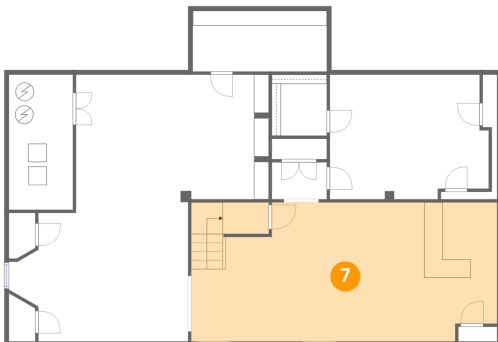
6 Floor 1 - Utility



Dimensions: 7'0" x 14'9"
Area: 103 sq. ft
Counted as living area: No

Heated: Yes
Finished: No
Enclosed: Yes
Contiguous: Yes
Permitted: Yes
Wet space: No
Addition: No
Conversion: No

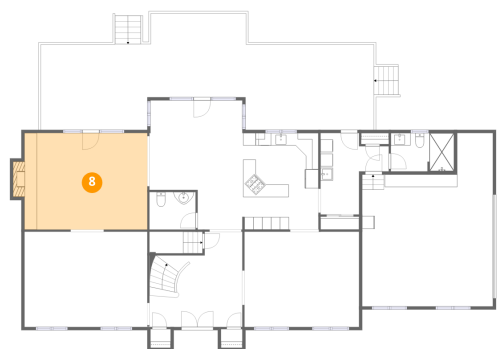
7 Floor 1 - Room



Dimensions: 33'4" x 15'2"
Area: 494 sq. ft
Counted as living area: Yes

Heated: Yes
Finished: Yes
Enclosed: Yes
Contiguous: Yes
Permitted: Yes
Wet space: No
Addition: No
Conversion: No

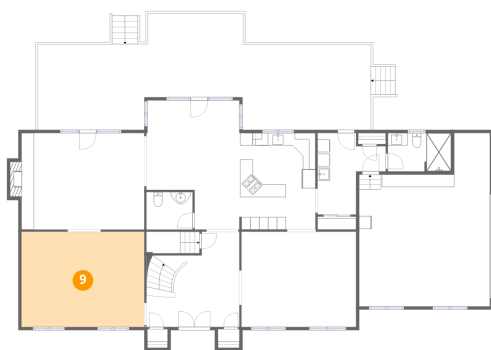
8 Floor 2 - Living Room



Dimensions: 17'5" x 15'4"
Area: 310 sq. ft
Counted as living area: Yes

Heated: Yes
Finished: Yes
Enclosed: Yes
Contiguous: Yes
Permitted: Yes
Wet space: No
Addition: No
Conversion: No

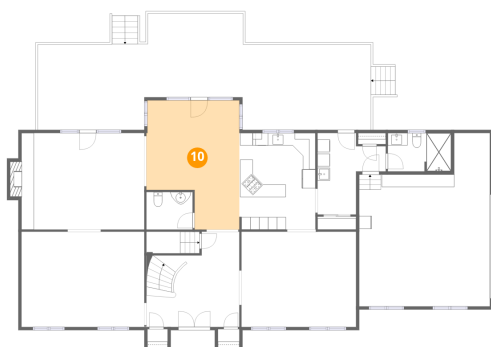
9 Floor 2 - Room



Dimensions: 19'6" x 15'2"
Area: 296 sq. ft
Counted as living area: Yes

Heated: Yes
Finished: Yes
Enclosed: Yes
Contiguous: Yes
Permitted: Yes
Wet space: No
Addition: No
Conversion: No

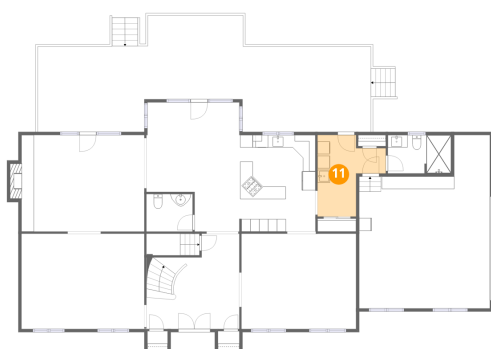
10 Floor 2 - Breakfast Nook



Dimensions: 14'9" x 20'6"
Area: 254 sq. ft
Counted as living area: Yes

Heated: Yes
Finished: Yes
Enclosed: Yes
Contiguous: Yes
Permitted: Yes
Wet space: No
Addition: No
Conversion: No

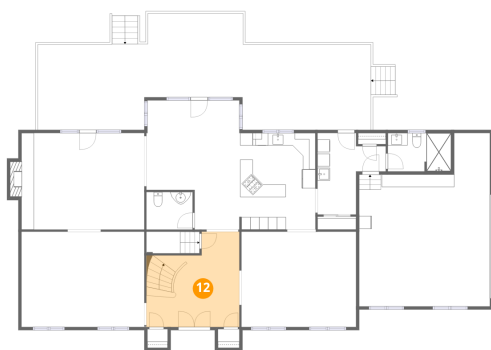
11 Floor 2 - Laundry



Dimensions: 10'10" x 12'11"
Area: 98 sq. ft
Counted as living area: Yes

Heated: Yes
Finished: Yes
Enclosed: Yes
Contiguous: Yes
Permitted: Yes
Wet space: No
Addition: No
Conversion: No

12 Floor 2 - Foyer



Dimensions: 14'9" x 15'2"
Area: 191 sq. ft
Counted as living area: Yes

Heated: Yes
Finished: Yes
Enclosed: Yes
Contiguous: Yes
Permitted: Yes
Wet space: No
Addition: No
Conversion: No

13 Floor 2 - Pantry



Dimensions: 6'2" x 2'1"
Area: 13 sq. ft
Counted as living area: Yes

Heated: Yes
Finished: Yes
Enclosed: Yes
Contiguous: Yes
Permitted: Yes
Wet space: No
Addition: No
Conversion: No

14 Floor 2 - Bath

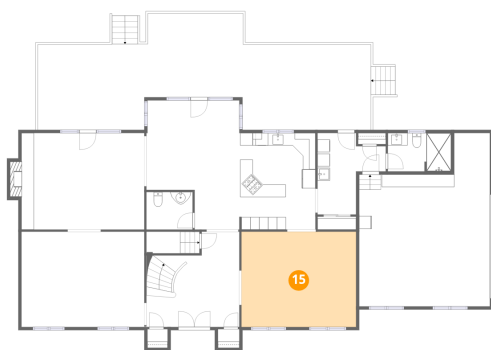


Dimensions: 10'1" x 6'1"
Area: 61 sq. ft
Counted as living area: Yes

Heated: Yes
Finished: Yes
Enclosed: Yes
Contiguous: Yes
Permitted: Yes
Wet space: Yes
Addition: No
Conversion: No

5 Ridge Hill Way, Holmdel, Monmouth County, New Jersey,
United States, 07733

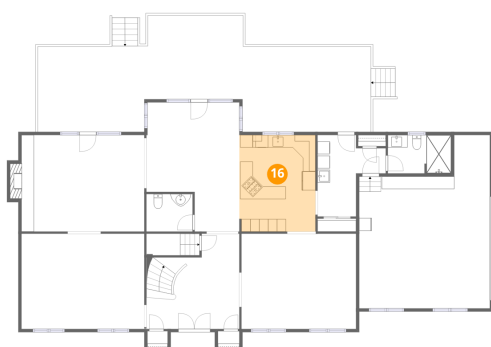
15 Floor 2 - Dining Room



Dimensions: 18'3" x 15'2"
Area: 276 sq. ft
Counted as living area: Yes

Heated: Yes
Finished: Yes
Enclosed: Yes
Contiguous: Yes
Permitted: Yes
Wet space: No
Addition: No
Conversion: No

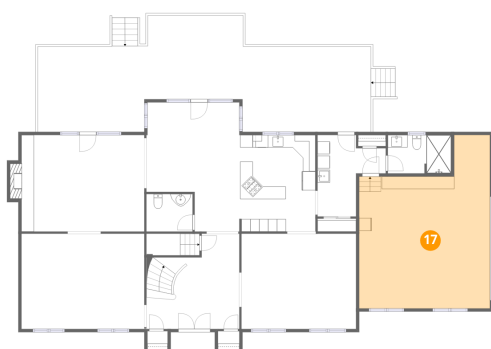
16 Floor 2 - Kitchen



Dimensions: 12'1" x 15'4"
Area: 185 sq. ft
Counted as living area: Yes

Heated: Yes
Finished: Yes
Enclosed: Yes
Contiguous: Yes
Permitted: Yes
Wet space: No
Addition: No
Conversion: No

17 Floor 2 - Garage

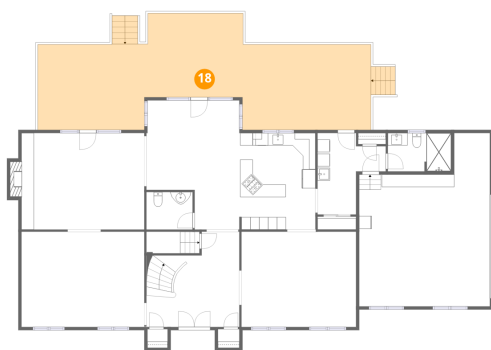


Dimensions: 20'9" x 27'6"
Area: 473 sq. ft
Counted as living area: No

Heated: No
Finished: No
Enclosed: Yes
Contiguous: Yes
Permitted: Yes
Wet space: No
Addition: No
Conversion: No

5 Ridge Hill Way, Holmdel, Monmouth County, New Jersey,
United States, 07733

18 Floor 2 - Deck



Dimensions: 53'0" x 18'6"
Area: 750 sq. ft
Counted as living area: No

Heated: No
Finished: No
Enclosed: No
Contiguous: Yes
Permitted: Yes
Wet space: No
Addition: No
Conversion: No

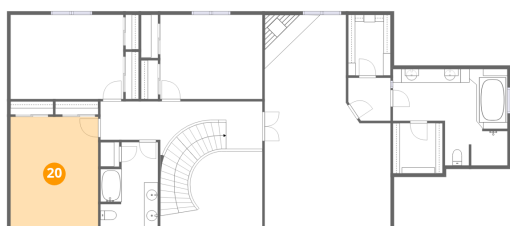
19 Floor 2 - Bath



Dimensions: 7'4" x 6'0"
Area: 44 sq. ft
Counted as living area: Yes

Heated: Yes
Finished: Yes
Enclosed: Yes
Contiguous: Yes
Permitted: Yes
Wet space: Yes
Addition: No
Conversion: No

20 Floor 3 - Bedroom

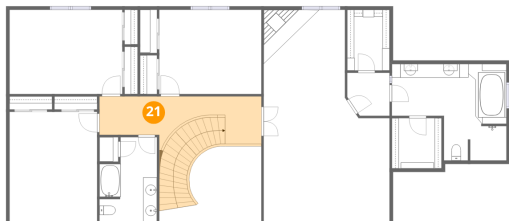


Dimensions: 12'8" x 16'1"
Area: 204 sq. ft
Counted as living area: Yes

Heated: Yes
Finished: Yes
Enclosed: Yes
Contiguous: Yes
Permitted: Yes
Wet space: No
Addition: No
Conversion: No

5 Ridge Hill Way, Holmdel, Monmouth County, New Jersey,
United States, 07733

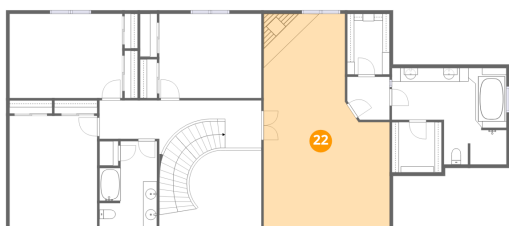
21 Floor 3 - Hall



Dimensions: 23'5" x 7'6"
Area: 201 sq. ft
Counted as living area: Yes

Heated: Yes
Finished: Yes
Enclosed: Yes
Contiguous: Yes
Permitted: Yes
Wet space: No
Addition: No
Conversion: No

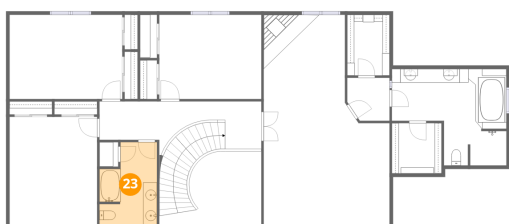
22 Floor 3 - Primary Bedroom



Dimensions: 18'3" x 30'10"
Area: 464 sq. ft
Counted as living area: Yes

Heated: Yes
Finished: Yes
Enclosed: Yes
Contiguous: Yes
Permitted: Yes
Wet space: No
Addition: No
Conversion: No

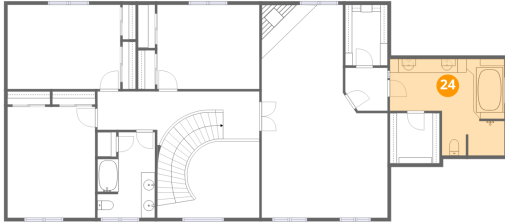
23 Floor 3 - Bath



Dimensions: 8'4" x 12'4"
Area: 90 sq. ft
Counted as living area: Yes

Heated: Yes
Finished: Yes
Enclosed: Yes
Contiguous: Yes
Permitted: Yes
Wet space: Yes
Addition: No
Conversion: No

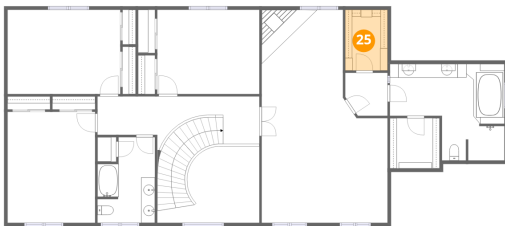
24 Floor 3 - Primary Bath



Dimensions: 16'7" x 14'0"
Area: 181 sq. ft
Counted as living area: Yes

Heated: Yes
Finished: Yes
Enclosed: Yes
Contiguous: Yes
Permitted: Yes
Wet space: Yes
Addition: No
Conversion: No

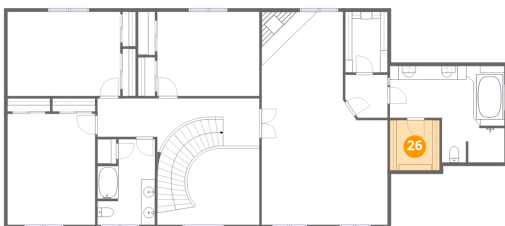
25 Floor 3 - W.I.C.



Dimensions: 6'2" x 8'9"
Area: 54 sq. ft
Counted as living area: Yes

Heated: Yes
Finished: Yes
Enclosed: Yes
Contiguous: Yes
Permitted: Yes
Wet space: No
Addition: No
Conversion: No

26 Floor 3 - W.I.C.

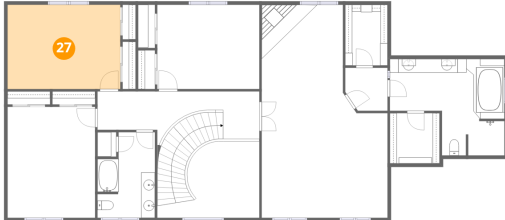


Dimensions: 7'3" x 7'3"
Area: 52 sq. ft
Counted as living area: Yes

Heated: Yes
Finished: Yes
Enclosed: Yes
Contiguous: Yes
Permitted: Yes
Wet space: No
Addition: No
Conversion: No

5 Ridge Hill Way, Holmdel, Monmouth County, New Jersey,
United States, 07733

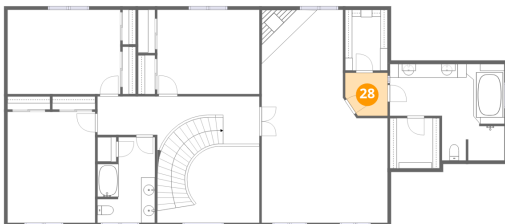
27 Floor 3 - Bedroom



Dimensions: 16'4" x 12'2"
Area: 199 sq. ft
Counted as living area: Yes

Heated: Yes
Finished: Yes
Enclosed: Yes
Contiguous: Yes
Permitted: Yes
Wet space: No
Addition: No
Conversion: No

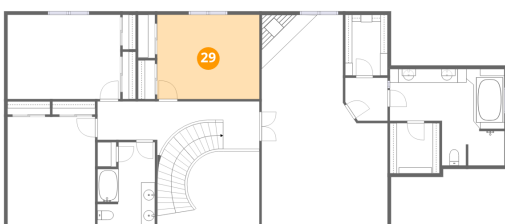
28 Floor 3 - Hall



Dimensions: 6'2" x 6'3"
Area: 36 sq. ft
Counted as living area: Yes

Heated: Yes
Finished: Yes
Enclosed: Yes
Contiguous: Yes
Permitted: Yes
Wet space: No
Addition: No
Conversion: No

29 Floor 3 - Bedroom



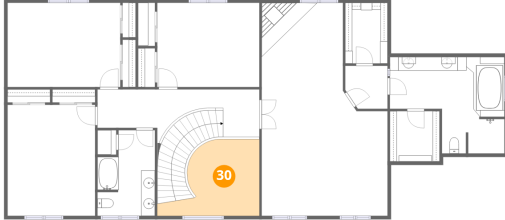
Dimensions: 14'9" x 12'2"
Area: 180 sq. ft
Counted as living area: Yes

Heated: Yes
Finished: Yes
Enclosed: Yes
Contiguous: Yes
Permitted: Yes
Wet space: No
Addition: No
Conversion: No

Home data report

5 Ridge Hill Way, Holmdel, Monmouth County, New Jersey,
United States, 07733

30 Floor 3 - Open To Below



Dimensions: 14'9" x 11'1"
Area: 118 sq. ft
Counted as living area: No

Heated: No
Finished: No
Enclosed: No
Contiguous: Yes
Permitted: No
Wet space: No
Addition: No
Conversion: No