

Home data report

4925 Player Drive Northeast, Monterey, Roanoke, Roanoke city, Virginia, United States, 24019



Total Area: 1762 sq. ft

Basement: 658 sq. ft, 1st Floor: 1104 sq. ft

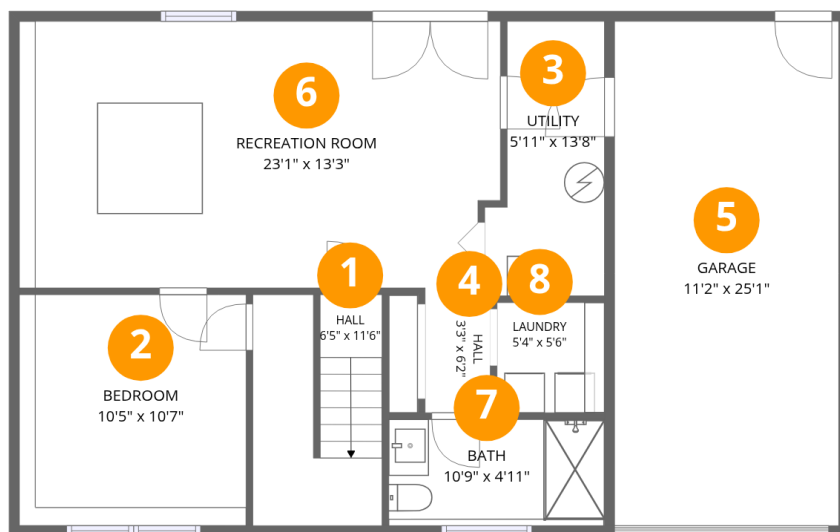
Excluded: Garage 279 sq. ft, Utility 71 sq. ft, Porch 28 sq. ft, Balcony 237 sq. ft, Walls: 150 sq. ft

Property summary



Home data report

4925 Player Drive Northeast, Monterey, Roanoke, Roanoke city, Virginia, United States, 24019



Room dimensions

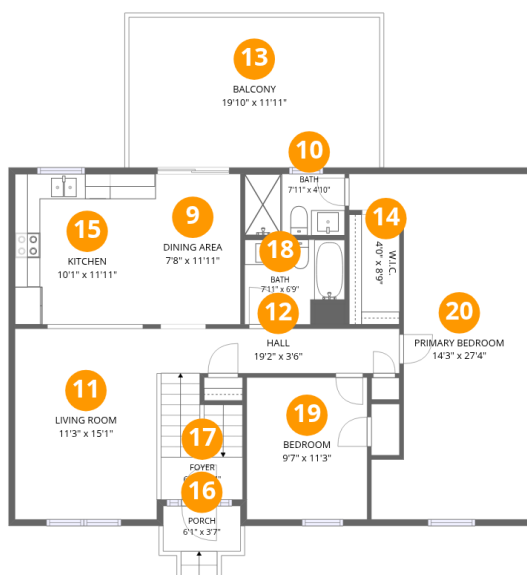
Floor 1 Below grade

Total:658sqft Excluded: 350sqft

#		Dimensions	sqft	Counted as living area
1	Hall	6'5" x 11'6"	71 sq. ft	Yes
2	Bedroom	10'5" x 10'7"	129 sq. ft	Yes
3	Utility	5'11" x 13'8"	71 sq. ft	No
4	Hall	3'3" x 6'2"	20 sq. ft	Yes
5	Garage	11'2" x 25'1"	279 sq. ft	No
6	Recreation Room	23'1" x 13'3"	312 sq. ft	Yes
7	Bath	10'9" x 4'11"	57 sq. ft	Yes
8	Laundry	5'4" x 5'6"	29 sq. ft	Yes

Home data report

4925 Player Drive Northeast, Monterey, Roanoke, Roanoke city, Virginia, United States, 24019



Room dimensions

Floor 2

Total:1104sqft Excluded: 265sqft

#		Dimensions	sqft	Counted as living area
9	Dining Area	7'8" x 11'11"	92 sq. ft	Yes
10	Bath	7'11" x 4'10"	39 sq. ft	Yes
11	Living Room	11'3" x 15'1"	173 sq. ft	Yes
12	Hall	19'2" x 3'6"	68 sq. ft	Yes
13	Balcony	19'10" x 11'11"	237 sq. ft	No
14	W.I.C.	4'0" x 8'9"	35 sq. ft	Yes
15	Kitchen	10'1" x 11'11"	121 sq. ft	Yes
16	Porch	6'1" x 3'7"	28 sq. ft	No
17	Foyer	6'5" x 3'4"	60 sq. ft	Yes
18	Bath	7'11" x 6'9"	48 sq. ft	Yes
19	Bedroom	9'7" x 11'3"	107 sq. ft	Yes

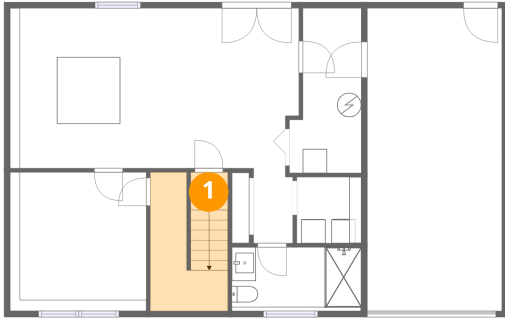
Home data report

**4925 Player Drive Northeast, Monterey, Roanoke, Roanoke city,
Virginia, United States, 24019**

#		Dimensions	sqft	Counted as living area
20	Primary Bedroom	14'3" x 27'4"	296 sq. ft	Yes

4925 Player Drive Northeast, Monterey, Roanoke, Roanoke city,
Virginia, United States, 24019

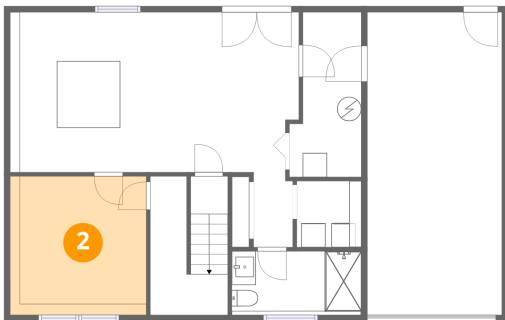
1 Floor 1 - Hall



Dimensions: 6'5" x 11'6"
Area: 71 sq. ft
Counted as living area: Yes

Heated: Yes
Finished: Yes
Enclosed: Yes
Contiguous: Yes
Permitted: Yes
Wet space: No
Addition: No
Conversion: No

2 Floor 1 - Bedroom

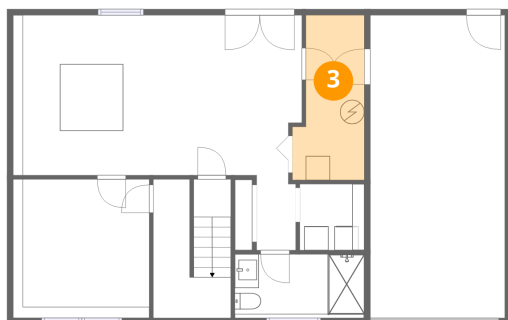


Dimensions: 10'5" x 10'7"
Area: 129 sq. ft
Counted as living area: Yes

Heated: Yes
Finished: Yes
Enclosed: Yes
Contiguous: Yes
Permitted: Yes
Wet space: No
Addition: No
Conversion: No

4925 Player Drive Northeast, Monterey, Roanoke, Roanoke city, Virginia, United States, 24019

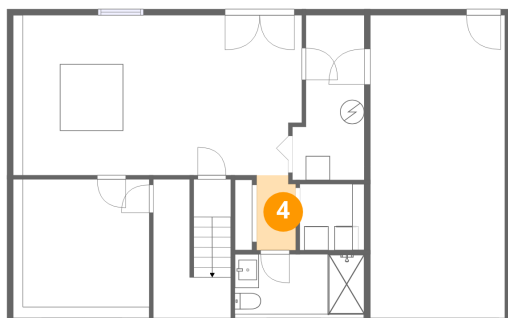
3 Floor 1 - Utility



Dimensions: 5'11" x 13'8"
Area: 71 sq. ft
Counted as living area: No

Heated: Yes
Finished: No
Enclosed: Yes
Contiguous: Yes
Permitted: Yes
Wet space: No
Addition: No
Conversion: No

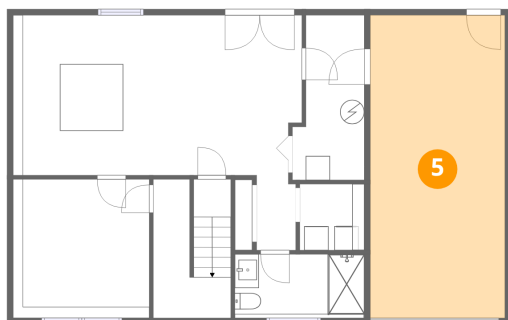
4 Floor 1 - Hall



Dimensions: 3'3" x 6'2"
Area: 20 sq. ft
Counted as living area: Yes

Heated: Yes
Finished: Yes
Enclosed: Yes
Contiguous: Yes
Permitted: Yes
Wet space: No
Addition: No
Conversion: No

5 Floor 1 - Garage

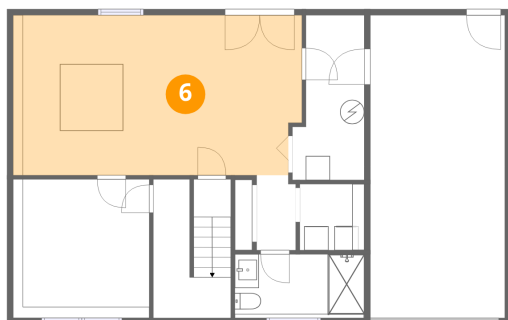


Dimensions: 11'2" x 25'1"
Area: 279 sq. ft
Counted as living area: No

Heated: No
Finished: No
Enclosed: Yes
Contiguous: Yes
Permitted: Yes
Wet space: No
Addition: No
Conversion: No

4925 Player Drive Northeast, Monterey, Roanoke, Roanoke city, Virginia, United States, 24019

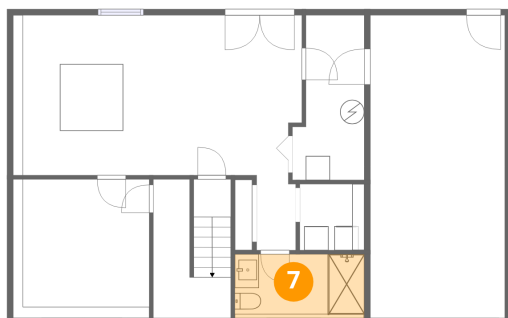
6 Floor 1 - Recreation Room



Dimensions: 23'1" x 13'3"
Area: 312 sq. ft
Counted as living area: Yes

Heated: Yes
Finished: Yes
Enclosed: Yes
Contiguous: Yes
Permitted: Yes
Wet space: No
Addition: No
Conversion: No

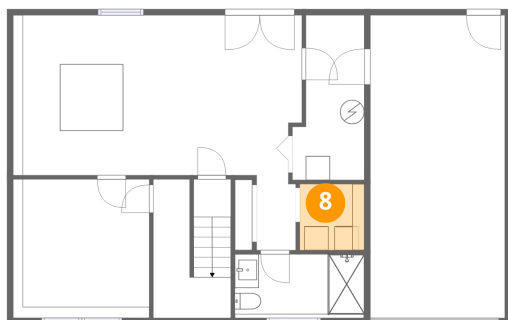
7 Floor 1 - Bath



Dimensions: 10'9" x 4'11"
Area: 57 sq. ft
Counted as living area: Yes

Heated: Yes
Finished: Yes
Enclosed: Yes
Contiguous: Yes
Permitted: Yes
Wet space: Yes
Addition: No
Conversion: No

8 Floor 1 - Laundry

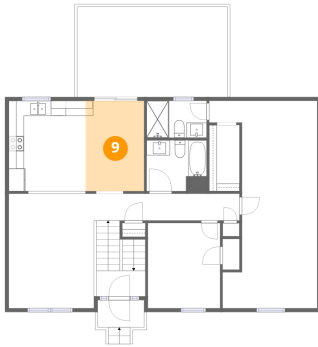


Dimensions: 5'4" x 5'6"
Area: 29 sq. ft
Counted as living area: Yes

Heated: Yes
Finished: Yes
Enclosed: Yes
Contiguous: Yes
Permitted: Yes
Wet space: No
Addition: No
Conversion: No

4925 Player Drive Northeast, Monterey, Roanoke, Roanoke city, Virginia, United States, 24019

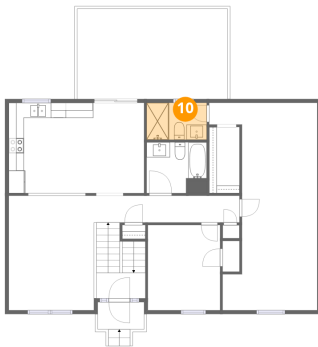
9 Floor 2 - Dining Area



Dimensions: 7'8" x 11'11"
Area: 92 sq. ft
Counted as living area: Yes

Heated: Yes
Finished: Yes
Enclosed: Yes
Contiguous: Yes
Permitted: Yes
Wet space: No
Addition: No
Conversion: No

10 Floor 2 - Bath



Dimensions: 7'11" x 4'10"
Area: 39 sq. ft
Counted as living area: Yes

Heated: Yes
Finished: Yes
Enclosed: Yes
Contiguous: Yes
Permitted: Yes
Wet space: Yes
Addition: No
Conversion: No

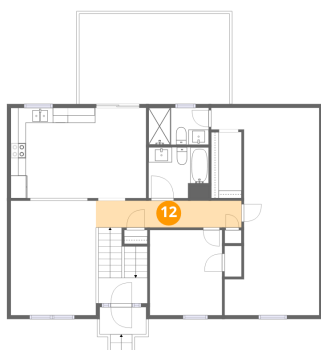
11 Floor 2 - Living Room



Dimensions: 11'3" x 15'1"
Area: 173 sq. ft
Counted as living area: Yes

Heated: Yes
Finished: Yes
Enclosed: Yes
Contiguous: Yes
Permitted: Yes
Wet space: No
Addition: No
Conversion: No

12 Floor 2 - Hall



Dimensions: 19'2" x 3'6"
Area: 68 sq. ft
Counted as living area: Yes

Heated: Yes
Finished: Yes
Enclosed: Yes
Contiguous: Yes
Permitted: Yes
Wet space: No
Addition: No
Conversion: No

13 Floor 2 - Balcony



Dimensions: 19'10" x 11'11"
Area: 237 sq. ft
Counted as living area: No

Heated: No
Finished: No
Enclosed: No
Contiguous: Yes
Permitted: Yes
Wet space: No
Addition: No
Conversion: No

14 Floor 2 - W.I.C.



Dimensions: 4'0" x 8'9"
Area: 35 sq. ft
Counted as living area: Yes

Heated: Yes
Finished: Yes
Enclosed: Yes
Contiguous: Yes
Permitted: Yes
Wet space: No
Addition: No
Conversion: No

4925 Player Drive Northeast, Monterey, Roanoke, Roanoke city, Virginia, United States, 24019

15 Floor 2 - Kitchen



Dimensions: 10'1" x 11'11"
Area: 121 sq. ft
Counted as living area: Yes

Heated: Yes
Finished: Yes
Enclosed: Yes
Contiguous: Yes
Permitted: Yes
Wet space: No
Addition: No
Conversion: No

16 Floor 2 - Porch



Dimensions: 6'1" x 3'7"
Area: 28 sq. ft
Counted as living area: No

Heated: No
Finished: No
Enclosed: No
Contiguous: Yes
Permitted: Yes
Wet space: No
Addition: No
Conversion: No

17 Floor 2 - Foyer



Dimensions: 6'5" x 3'4"
Area: 60 sq. ft
Counted as living area: Yes

Heated: Yes
Finished: Yes
Enclosed: Yes
Contiguous: Yes
Permitted: Yes
Wet space: No
Addition: No
Conversion: No

18 Floor 2 - Bath



Dimensions: 7'11" x 6'9"
Area: 48 sq. ft
Counted as living area: Yes

Heated: Yes
Finished: Yes
Enclosed: Yes
Contiguous: Yes
Permitted: Yes
Wet space: Yes
Addition: No
Conversion: No

19 Floor 2 - Bedroom



Dimensions: 9'7" x 11'3"
Area: 107 sq. ft
Counted as living area: Yes

Heated: Yes
Finished: Yes
Enclosed: Yes
Contiguous: Yes
Permitted: Yes
Wet space: No
Addition: No
Conversion: No

20 Floor 2 - Primary Bedroom



Dimensions: 14'3" x 27'4"
Area: 296 sq. ft
Counted as living area: Yes

Heated: Yes
Finished: Yes
Enclosed: Yes
Contiguous: Yes
Permitted: Yes
Wet space: No
Addition: No
Conversion: No