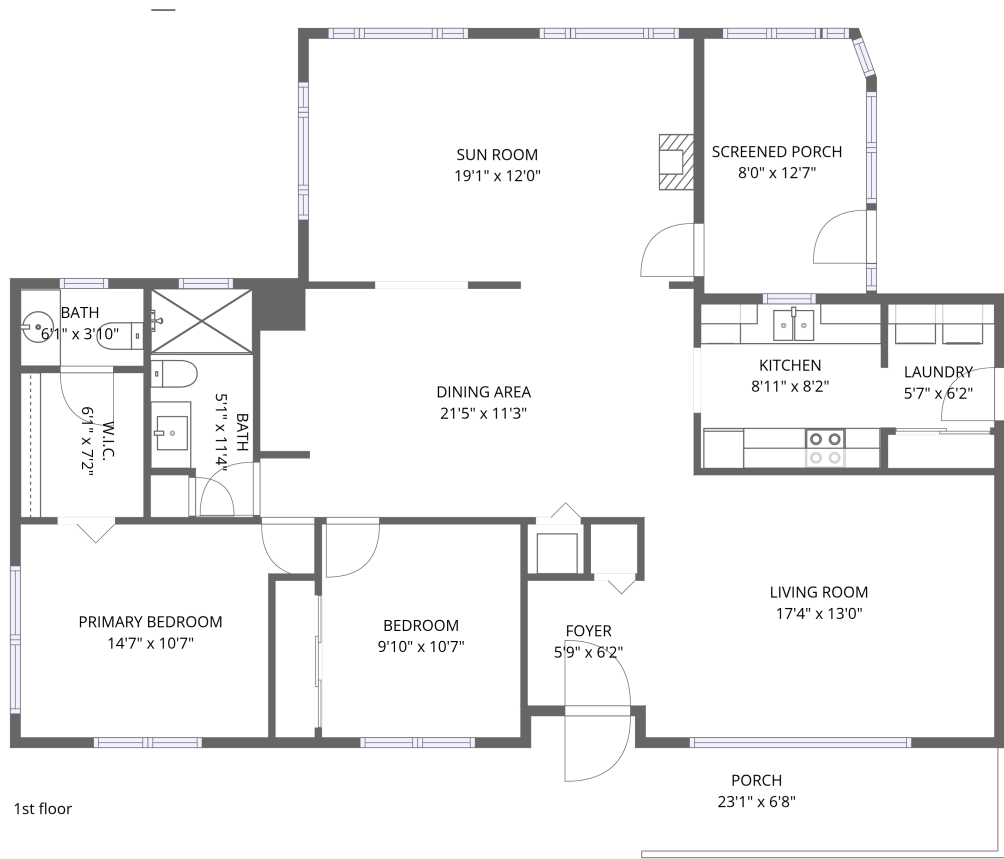


Home data report

30 Mimosa Dr,Innisfil Beach,ON,CA




Total Area: 1284 sq. ft

1st Floor: 1284 sq. ft

Excluded: Screened porch 101 sq. ft, Porch 126 sq. ft, Walls: 95 sq. ft

Property summary

 1 Floors

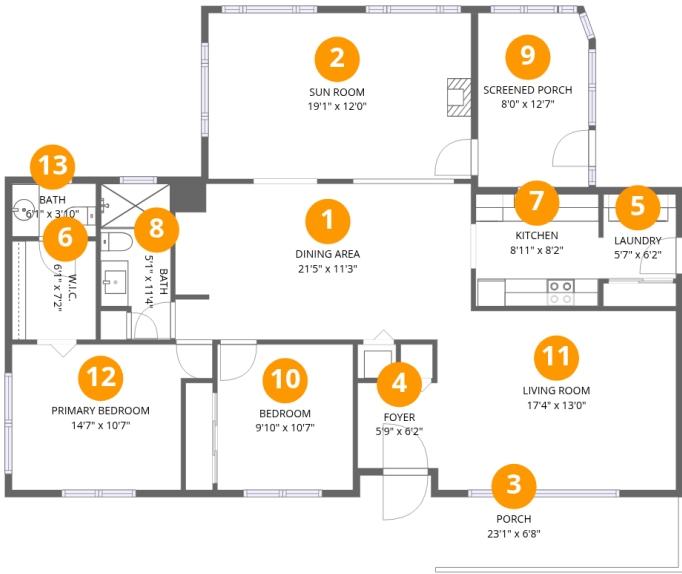
 2 Bedrooms

 1 Bathrooms

 1 Half baths

Home data report

30 Mimosa Dr,Innisfil Beach,ON,CA



Room dimensions

Floor 1 Total:1284sqft Excluded: 227sqft

#		Dimensions	sqft	Counted as living area
1	Dining Area	21'5" x 11'3"	242 sq. ft	Yes
2	Sun Room	19'1" x 12'0"	229 sq. ft	Yes
3	Porch	23'1" x 6'8"	154 sq. ft	No
4	Foyer	5'9" x 6'2"	36 sq. ft	Yes
5	Laundry	5'7" x 6'2"	34 sq. ft	Yes
6	W.I.C.	6'1" x 7'2"	44 sq. ft	Yes
7	Kitchen	8'11" x 8'2"	73 sq. ft	Yes
8	Bath	5'1" x 11'4"	57 sq. ft	Yes
9	Screened Porch	8'0" x 12'7"	101 sq. ft	No
10	Bedroom	9'10" x 10'7"	104 sq. ft	Yes
11	Living Room	17'4" x 13'0"	225 sq. ft	Yes

Home data report

30 Mimosa Dr,Innisfil Beach,ON,CA

#		Dimensions	sqft	Counted as living area
12	Primary Bedroom	14'7" x 10'7"	154 sq. ft	Yes
13	Bath	6'1" x 3'10"	23 sq. ft	Yes

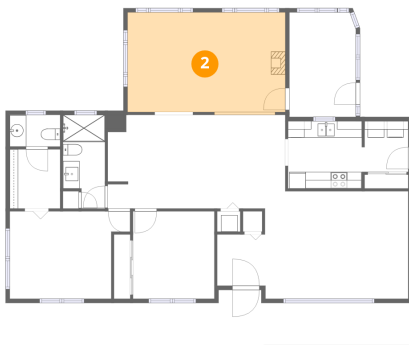
1 Floor 1 - Dining Area



Dimensions: 21'5" x 11'3"
Area: 242 sq. ft
Counted as living area: Yes

Heated: Yes
Finished: Yes
Enclosed: Yes
Contiguous: Yes
Permitted: Yes
Wet space: No
Addition: No
Conversion: No

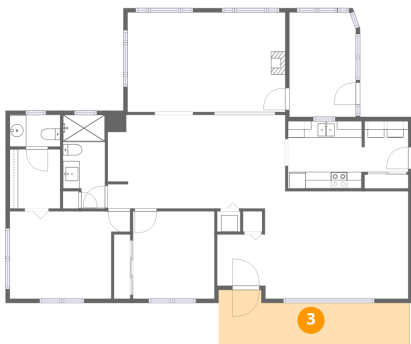
2 Floor 1 - Sun Room



Dimensions: 19'1" x 12'0"
Area: 229 sq. ft
Counted as living area: Yes

Heated: Yes
Finished: Yes
Enclosed: Yes
Contiguous: Yes
Permitted: Yes
Wet space: No
Addition: No
Conversion: No

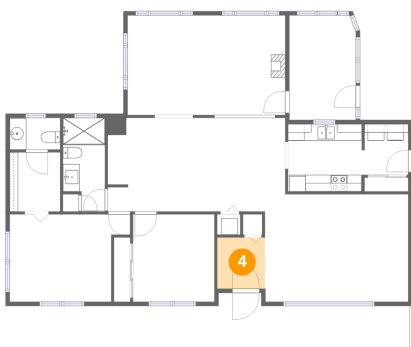
3 Floor 1 - Porch



Dimensions: 23'1" x 6'8"
Area: 154 sq. ft
Counted as living area: No

Heated: No
Finished: No
Enclosed: No
Contiguous: Yes
Permitted: Yes
Wet space: No
Addition: No
Conversion: No

4 Floor 1 - Foyer



Dimensions: 5'9" x 6'2"
Area: 36 sq. ft
Counted as living area: Yes

Heated: Yes
Finished: Yes
Enclosed: Yes
Contiguous: Yes
Permitted: Yes
Wet space: No
Addition: No
Conversion: No

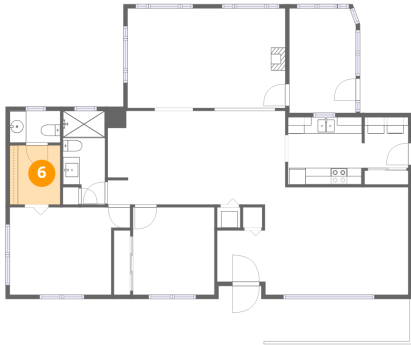
5 Floor 1 - Laundry



Dimensions: 5'7" x 6'2"
Area: 34 sq. ft
Counted as living area: Yes

Heated: Yes
Finished: Yes
Enclosed: Yes
Contiguous: Yes
Permitted: Yes
Wet space: No
Addition: No
Conversion: No

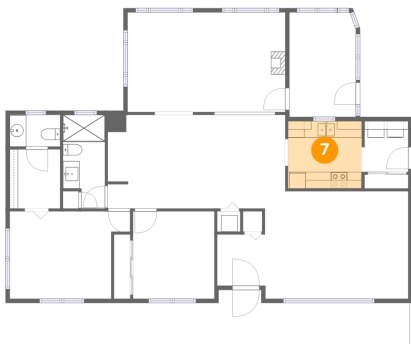
6 Floor 1 - W.I.C.



Dimensions: 6'1" x 7'2"
Area: 44 sq. ft
Counted as living area: Yes

Heated: Yes
Finished: Yes
Enclosed: Yes
Contiguous: Yes
Permitted: Yes
Wet space: No
Addition: No
Conversion: No

7 Floor 1 - Kitchen



Dimensions: 8'11" x 8'2"
Area: 73 sq. ft
Counted as living area: Yes

Heated: Yes
Finished: Yes
Enclosed: Yes
Contiguous: Yes
Permitted: Yes
Wet space: No
Addition: No
Conversion: No

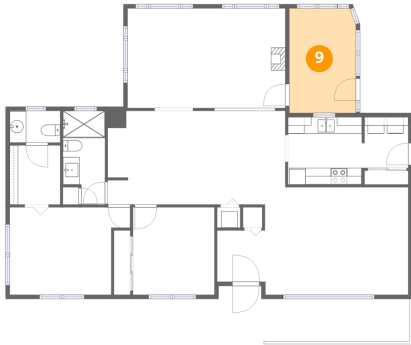
8 Floor 1 - Bath



Dimensions: 5'1" x 11'4"
Area: 57 sq. ft
Counted as living area: Yes

Heated: Yes
Finished: Yes
Enclosed: Yes
Contiguous: Yes
Permitted: Yes
Wet space: Yes
Addition: No
Conversion: No

9 Floor 1 - Screened Porch



Dimensions: 8'0" x 12'7"
Area: 101 sq. ft
Counted as living area: No

Heated: No
Finished: No
Enclosed: No
Contiguous: Yes
Permitted: Yes
Wet space: No
Addition: No
Conversion: No

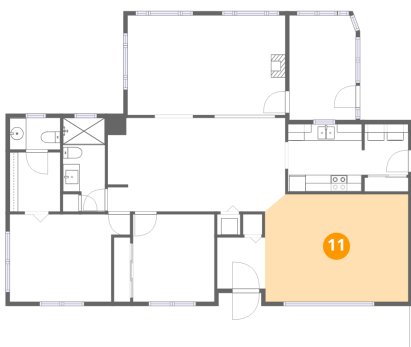
10 Floor 1 - Bedroom



Dimensions: 9'10" x 10'7"
Area: 104 sq. ft
Counted as living area: Yes

Heated: Yes
Finished: Yes
Enclosed: Yes
Contiguous: Yes
Permitted: Yes
Wet space: No
Addition: No
Conversion: No

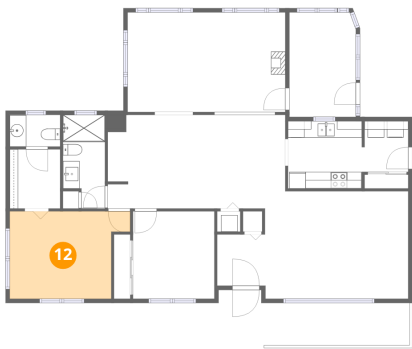
11 Floor 1 - Living Room



Dimensions: 17'4" x 13'0"
Area: 225 sq. ft
Counted as living area: Yes

Heated: Yes
Finished: Yes
Enclosed: Yes
Contiguous: Yes
Permitted: Yes
Wet space: No
Addition: No
Conversion: No

12 Floor 1 - Primary Bedroom



Dimensions: 14'7" x 10'7"
Area: 154 sq. ft
Counted as living area: Yes

Heated: Yes
Finished: Yes
Enclosed: Yes
Contiguous: Yes
Permitted: Yes
Wet space: No
Addition: No
Conversion: No

13 Floor 1 - Bath



Dimensions: 6'1" x 3'10"
Area: 23 sq. ft
Counted as living area: Yes

Heated: Yes
Finished: Yes
Enclosed: Yes
Contiguous: Yes
Permitted: Yes
Wet space: Yes
Addition: No
Conversion: No