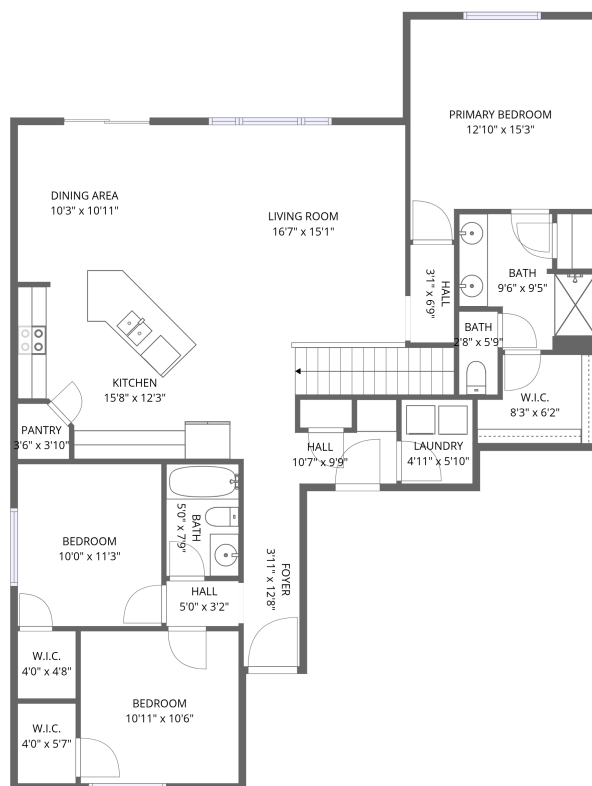


Basement



1st floor

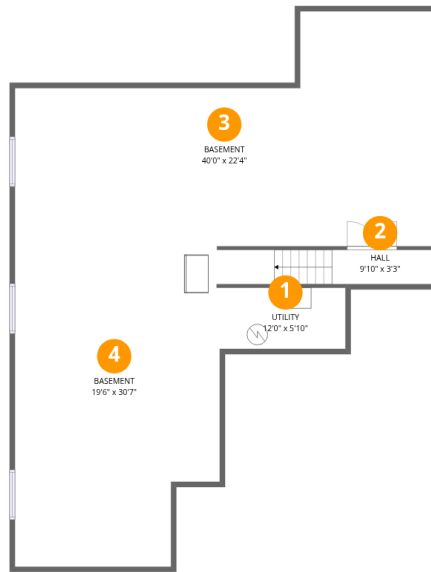
Total Area: 1474 sq. ft

Basement: 36 sq. ft, 1st Floor: 1438 sq. ft

Excluded: Basement 1300 sq. ft, Utility 70 sq. ft, Walls: 187 sq. ft

Property summary





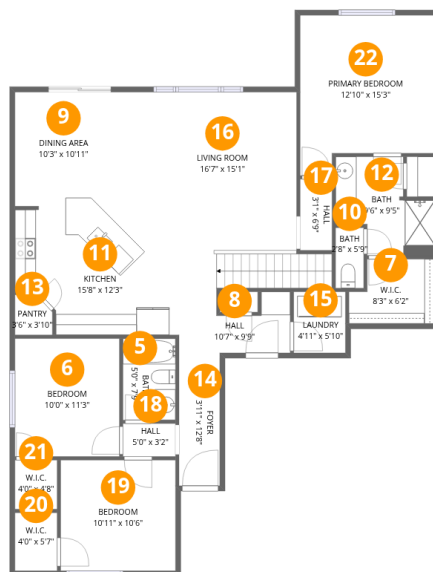
Room dimensions

Floor 1 Below grade

Total:36sqft

Excluded: 1370sqft

| # | | Dimensions | sqft | Counted as living area |
|---|----------|---------------|------------|------------------------|
| 1 | Utility | 12'0" x 5'10" | 70 sq. ft | No |
| 2 | Hall | 9'10" x 3'3" | 32 sq. ft | Yes |
| 3 | Basement | 40'0" x 22'4" | 896 sq. ft | No |
| 4 | Basement | 19'6" x 30'7" | 597 sq. ft | No |



Room dimensions

Floor 2

Total:1438sqft Excluded: 0sqft

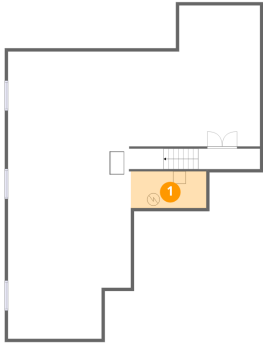
| # | | Dimensions | sqft | Counted as living area |
|----|-------------|----------------|------------|------------------------|
| 5 | Bath | 5'0" x 7'9" | 39 sq. ft | Yes |
| 6 | Bedroom | 10'0" x 11'3" | 112 sq. ft | Yes |
| 7 | W.I.C. | 8'3" x 6'2" | 50 sq. ft | Yes |
| 8 | Hall | 10'7" x 9'9" | 104 sq. ft | Yes |
| 9 | Dining Area | 10'3" x 10'11" | 112 sq. ft | Yes |
| 10 | Bath | 2'8" x 5'9" | 15 sq. ft | Yes |
| 11 | Kitchen | 15'8" x 12'3" | 192 sq. ft | Yes |
| 12 | Bath | 9'6" x 9'5" | 89 sq. ft | Yes |
| 13 | Pantry | 3'6" x 3'10" | 14 sq. ft | Yes |
| 14 | Foyer | 3'11" x 12'8" | 49 sq. ft | Yes |
| 15 | Laundry | 4'11" x 5'10" | 29 sq. ft | Yes |

Home data report

1385 Benjamin Dr,Eaton,CO,US

| # | | Dimensions | sqft | Counted as living area |
|----|-----------------|----------------|------------|------------------------|
| 16 | Living Room | 16'7" x 15'1" | 250 sq. ft | Yes |
| 17 | Hall | 3'1" x 6'9" | 21 sq. ft | Yes |
| 18 | Hall | 5'0" x 3'2" | 16 sq. ft | Yes |
| 19 | Bedroom | 10'11" x 10'6" | 115 sq. ft | Yes |
| 20 | W.I.C. | 4'0" x 5'7" | 22 sq. ft | Yes |
| 21 | W.I.C. | 4'0" x 4'8" | 19 sq. ft | Yes |
| 22 | Primary Bedroom | 12'10" x 15'3" | 197 sq. ft | Yes |

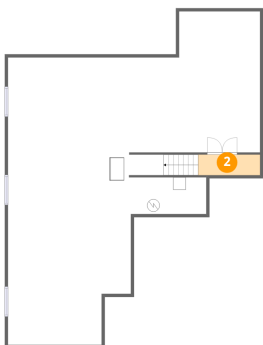
1 Floor 1 - Utility



Dimensions: 12'0" x 5'10"
Area: 70 sq. ft
Counted as living area: No

Heated: Yes
Finished: No
Enclosed: Yes
Contiguous: Yes
Permitted: Yes
Wet space: No
Addition: No
Conversion: No

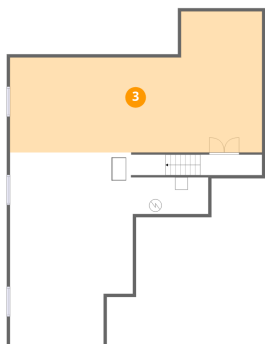
2 Floor 1 - Hall



Dimensions: 9'10" x 3'3"
Area: 32 sq. ft
Counted as living area: No

Heated: Yes
Finished: Yes
Enclosed: Yes
Contiguous: No
Permitted: Yes
Wet space: No
Addition: No
Conversion: No

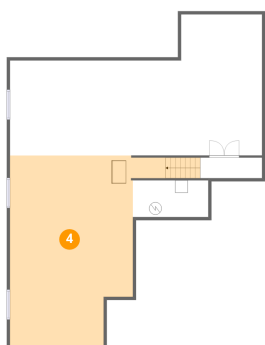
3 Floor 1 - Basement



Dimensions: 40'0" x 22'4"
Area: 896 sq. ft
Counted as living area: No

Heated: Yes
Finished: No
Enclosed: Yes
Contiguous: Yes
Permitted: Yes
Wet space: No
Addition: No
Conversion: No

4 Floor 1 - Basement



Dimensions: 19'6" x 30'7"
Area: 597 sq. ft
Counted as living area: No

Heated: Yes
Finished: No
Enclosed: Yes
Contiguous: Yes
Permitted: Yes
Wet space: No
Addition: No
Conversion: No

5 Floor 2 - Bath



Dimensions: 5'0" x 7'9"
Area: 39 sq. ft
Counted as living area: Yes

Heated: Yes
Finished: Yes
Enclosed: Yes
Contiguous: Yes
Permitted: Yes
Wet space: Yes
Addition: No
Conversion: No

6 Floor 2 - Bedroom



Dimensions: 10'0" x 11'3"
Area: 112 sq. ft
Counted as living area: Yes

Heated: Yes
Finished: Yes
Enclosed: Yes
Contiguous: Yes
Permitted: Yes
Wet space: No
Addition: No
Conversion: No

7 Floor 2 - W.I.C.



Dimensions: 8'3" x 6'2"
Area: 50 sq. ft
Counted as living area: Yes

Heated: Yes
Finished: Yes
Enclosed: Yes
Contiguous: Yes
Permitted: Yes
Wet space: No
Addition: No
Conversion: No

8 Floor 2 - Hall



Dimensions: 10'7" x 9'9"
Area: 104 sq. ft
Counted as living area: Yes

Heated: Yes
Finished: Yes
Enclosed: Yes
Contiguous: Yes
Permitted: Yes
Wet space: No
Addition: No
Conversion: No

9 Floor 2 - Dining Area



Dimensions: 10'3" x 10'11"
Area: 112 sq. ft
Counted as living area: Yes

Heated: Yes
Finished: Yes
Enclosed: Yes
Contiguous: Yes
Permitted: Yes
Wet space: No
Addition: No
Conversion: No

10 Floor 2 - Bath



Dimensions: 2'8" x 5'9"
Area: 15 sq. ft
Counted as living area: Yes

Heated: Yes
Finished: Yes
Enclosed: Yes
Contiguous: Yes
Permitted: Yes
Wet space: Yes
Addition: No
Conversion: No

11 Floor 2 - Kitchen



Dimensions: 15'8" x 12'3"
Area: 192 sq. ft
Counted as living area: Yes

Heated: Yes
Finished: Yes
Enclosed: Yes
Contiguous: Yes
Permitted: Yes
Wet space: No
Addition: No
Conversion: No

12 Floor 2 - Bath



Dimensions: 9'6" x 9'5"
Area: 89 sq. ft
Counted as living area: Yes

Heated: Yes
Finished: Yes
Enclosed: Yes
Contiguous: Yes
Permitted: Yes
Wet space: Yes
Addition: No
Conversion: No

13 Floor 2 - Pantry



Dimensions: 3'6" x 3'10"
Area: 14 sq. ft
Counted as living area: Yes

Heated: Yes
Finished: Yes
Enclosed: Yes
Contiguous: Yes
Permitted: Yes
Wet space: No
Addition: No
Conversion: No

14 Floor 2 - Foyer



Dimensions: 3'11" x 12'8"
Area: 49 sq. ft
Counted as living area: Yes

Heated: Yes
Finished: Yes
Enclosed: Yes
Contiguous: Yes
Permitted: Yes
Wet space: No
Addition: No
Conversion: No

15 Floor 2 - Laundry



Dimensions: 4'11" x 5'10"
Area: 29 sq. ft
Counted as living area: Yes

Heated: Yes
Finished: Yes
Enclosed: Yes
Contiguous: Yes
Permitted: Yes
Wet space: No
Addition: No
Conversion: No

16 Floor 2 - Living Room



Dimensions: 16'7" x 15'1"
Area: 250 sq. ft
Counted as living area: Yes

Heated: Yes
Finished: Yes
Enclosed: Yes
Contiguous: Yes
Permitted: Yes
Wet space: No
Addition: No
Conversion: No

17 Floor 2 - Hall



Dimensions: 3'1" x 6'9"
Area: 21 sq. ft
Counted as living area: Yes

Heated: Yes
Finished: Yes
Enclosed: Yes
Contiguous: Yes
Permitted: Yes
Wet space: No
Addition: No
Conversion: No

18 Floor 2 - Hall



Dimensions: 5'0" x 3'2"
Area: 16 sq. ft
Counted as living area: Yes

Heated: Yes
Finished: Yes
Enclosed: Yes
Contiguous: Yes
Permitted: Yes
Wet space: No
Addition: No
Conversion: No

19 Floor 2 - Bedroom



Dimensions: 10'11" x 10'6"
Area: 115 sq. ft
Counted as living area: Yes

Heated: Yes
Finished: Yes
Enclosed: Yes
Contiguous: Yes
Permitted: Yes
Wet space: No
Addition: No
Conversion: No

20 Floor 2 - W.I.C.



Dimensions: 4'0" x 5'7"
Area: 22 sq. ft
Counted as living area: Yes

Heated: Yes
Finished: Yes
Enclosed: Yes
Contiguous: Yes
Permitted: Yes
Wet space: No
Addition: No
Conversion: No

21 Floor 2 - W.I.C.



Dimensions: 4'0" x 4'8"
Area: 19 sq. ft
Counted as living area: Yes

Heated: Yes
Finished: Yes
Enclosed: Yes
Contiguous: Yes
Permitted: Yes
Wet space: No
Addition: No
Conversion: No

22 Floor 2 - Primary Bedroom



Dimensions: 12'10" x 15'3"
Area: 197 sq. ft
Counted as living area: Yes

Heated: Yes
Finished: Yes
Enclosed: Yes
Contiguous: Yes
Permitted: Yes
Wet space: No
Addition: No
Conversion: No