

Home data report

7516 21st Street Rd, Greeley, CO, US



**Total Area: 1486 sq. ft**

Basement: 31 sq. ft, 1st Floor: 1455 sq. ft

Excluded: Basement 1380 sq. ft, Garage 383 sq. ft, Walls: 223 sq. ft

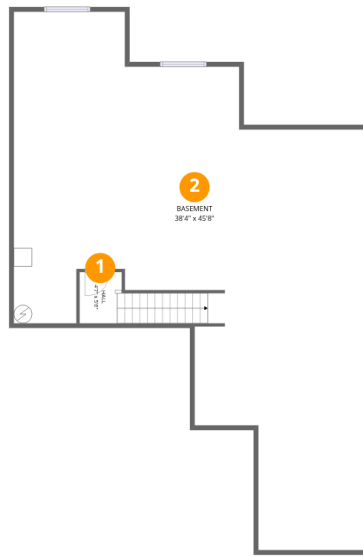
### Property summary

 **2** Floors

 **3** Bedrooms

 **2** Bathrooms

 **1** Garages



## Room dimensions

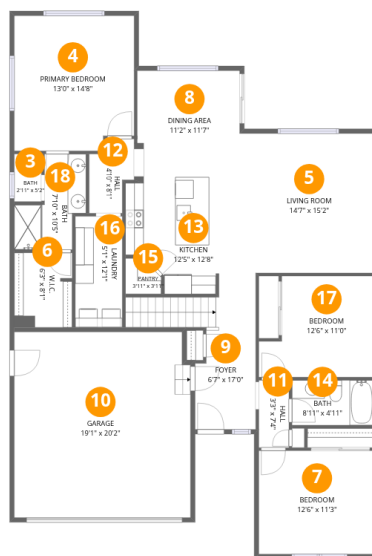
Floor 1 Below grade

Total:31sqft

Excluded: 1380sqft

#		Dimensions	sqft	Counted as living area
1	Hall	4'7" x 5'6"	27 sq. ft	Yes
2	Basement	38'4" x 45'8"	1376 sq. ft	No

# 7516 21st Street Rd, Greeley, CO, US



## Room dimensions

Floor 2

Total: 1455sqft Excluded: 383sqft

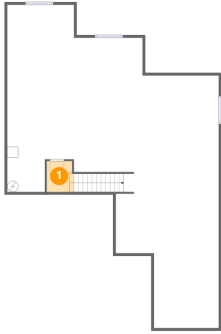
#		Dimensions	sqft	Counted as living area
3	Bath	2'11" x 5'2"	15 sq. ft	Yes
4	Primary Bedroom	13'0" x 14'8"	186 sq. ft	Yes
5	Living Room	14'7" x 15'2"	221 sq. ft	Yes
6	W.I.C.	6'3" x 8'1"	51 sq. ft	Yes
7	Bedroom	12'6" x 11'3"	140 sq. ft	Yes
8	Dining Area	11'2" x 11'7"	126 sq. ft	Yes
9	Foyer	6'7" x 17'0"	125 sq. ft	Yes
10	Garage	19'1" x 20'2"	383 sq. ft	No
11	Hall	3'3" x 7'4"	24 sq. ft	Yes
12	Hall	4'10" x 8'1"	32 sq. ft	Yes
13	Kitchen	12'5" x 12'8"	135 sq. ft	Yes

Home data report

**7516 21st Street Rd,Greeley,CO,US**

#		Dimensions	sqft	Counted as living area
14	Bath	8'11" x 4'11"	43 sq. ft	Yes
15	Pantry	3'11" x 3'11"	13 sq. ft	Yes
16	Laundry	5'1" x 12'1"	62 sq. ft	Yes
17	Bedroom	12'6" x 11'0"	120 sq. ft	Yes
18	Bath	7'10" x 10'5"	57 sq. ft	Yes

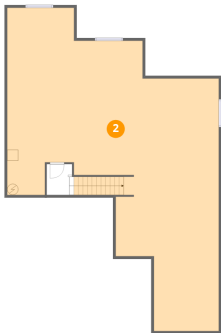
## 1 Floor 1 - Hall



Dimensions: 4'7" x 5'6"  
Area: 27 sq. ft  
Counted as living area: No

Heated: Yes  
Finished: Yes  
Enclosed: Yes  
Contiguous: No  
Permitted: Yes  
Wet space: No  
Addition: No  
Conversion: No

## 2 Floor 1 - Basement



Dimensions: 38'4" x 45'8"  
Area: 1376 sq. ft  
Counted as living area: No

Heated: Yes  
Finished: No  
Enclosed: Yes  
Contiguous: Yes  
Permitted: Yes  
Wet space: No  
Addition: No  
Conversion: No

### 3 Floor 2 - Bath



Dimensions: 2'11" x 5'2"  
Area: 15 sq. ft  
Counted as living area: Yes

Heated: Yes  
Finished: Yes  
Enclosed: Yes  
Contiguous: Yes  
Permitted: Yes  
Wet space: Yes  
Addition: No  
Conversion: No

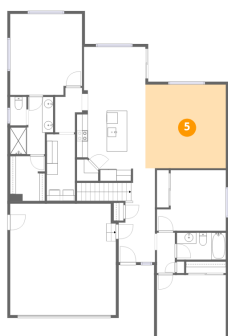
### 4 Floor 2 - Primary Bedroom



Dimensions: 13'0" x 14'8"  
Area: 186 sq. ft  
Counted as living area: Yes

Heated: Yes  
Finished: Yes  
Enclosed: Yes  
Contiguous: Yes  
Permitted: Yes  
Wet space: No  
Addition: No  
Conversion: No

### 5 Floor 2 - Living Room



Dimensions: 14'7" x 15'2"  
Area: 221 sq. ft  
Counted as living area: Yes

Heated: Yes  
Finished: Yes  
Enclosed: Yes  
Contiguous: Yes  
Permitted: Yes  
Wet space: No  
Addition: No  
Conversion: No

**6** Floor 2 - W.I.C.



Dimensions: 6'3" x 8'1"  
Area: 51 sq. ft  
Counted as living area: Yes

Heated: Yes  
Finished: Yes  
Enclosed: Yes  
Contiguous: Yes  
Permitted: Yes  
Wet space: No  
Addition: No  
Conversion: No

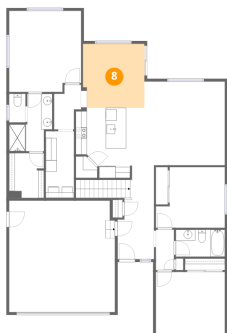
**7** Floor 2 - Bedroom



Dimensions: 12'6" x 11'3"  
Area: 140 sq. ft  
Counted as living area: Yes

Heated: Yes  
Finished: Yes  
Enclosed: Yes  
Contiguous: Yes  
Permitted: Yes  
Wet space: No  
Addition: No  
Conversion: No

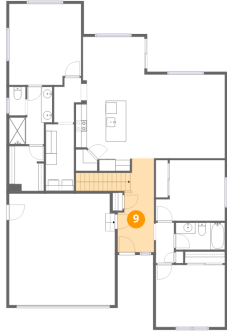
**8** Floor 2 - Dining Area



Dimensions: 11'2" x 11'7"  
Area: 126 sq. ft  
Counted as living area: Yes

Heated: Yes  
Finished: Yes  
Enclosed: Yes  
Contiguous: Yes  
Permitted: Yes  
Wet space: No  
Addition: No  
Conversion: No

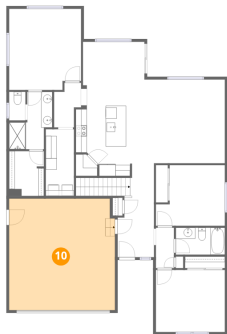
## 9 Floor 2 - Foyer



Dimensions: 6'7" x 17'0"  
Area: 125 sq. ft  
Counted as living area: Yes

Heated: Yes  
Finished: Yes  
Enclosed: Yes  
Contiguous: Yes  
Permitted: Yes  
Wet space: No  
Addition: No  
Conversion: No

## 10 Floor 2 - Garage



Dimensions: 19'1" x 20'2"  
Area: 383 sq. ft  
Counted as living area: No

Heated: No  
Finished: No  
Enclosed: Yes  
Contiguous: Yes  
Permitted: Yes  
Wet space: No  
Addition: No  
Conversion: No

## 11 Floor 2 - Hall



Dimensions: 3'3" x 7'4"  
Area: 24 sq. ft  
Counted as living area: Yes

Heated: Yes  
Finished: Yes  
Enclosed: Yes  
Contiguous: Yes  
Permitted: Yes  
Wet space: No  
Addition: No  
Conversion: No

## 12 Floor 2 - Hall



Dimensions: 4'10" x 8'1"  
Area: 32 sq. ft  
Counted as living area: Yes

Heated: Yes  
Finished: Yes  
Enclosed: Yes  
Contiguous: Yes  
Permitted: Yes  
Wet space: No  
Addition: No  
Conversion: No

## 13 Floor 2 - Kitchen



Dimensions: 12'5" x 12'8"  
Area: 135 sq. ft  
Counted as living area: Yes

Heated: Yes  
Finished: Yes  
Enclosed: Yes  
Contiguous: Yes  
Permitted: Yes  
Wet space: No  
Addition: No  
Conversion: No

## 14 Floor 2 - Bath



Dimensions: 8'11" x 4'11"  
Area: 43 sq. ft  
Counted as living area: Yes

Heated: Yes  
Finished: Yes  
Enclosed: Yes  
Contiguous: Yes  
Permitted: Yes  
Wet space: Yes  
Addition: No  
Conversion: No

## 15 Floor 2 - Pantry



Dimensions: 3'11" x 3'11"  
Area: 13 sq. ft  
Counted as living area: Yes

Heated: Yes  
Finished: Yes  
Enclosed: Yes  
Contiguous: Yes  
Permitted: Yes  
Wet space: No  
Addition: No  
Conversion: No

## 16 Floor 2 - Laundry



Dimensions: 5'1" x 12'1"  
Area: 62 sq. ft  
Counted as living area: Yes

Heated: Yes  
Finished: Yes  
Enclosed: Yes  
Contiguous: Yes  
Permitted: Yes  
Wet space: No  
Addition: No  
Conversion: No

## 17 Floor 2 - Bedroom



Dimensions: 12'6" x 11'0"  
Area: 120 sq. ft  
Counted as living area: Yes

Heated: Yes  
Finished: Yes  
Enclosed: Yes  
Contiguous: Yes  
Permitted: Yes  
Wet space: No  
Addition: No  
Conversion: No

**18** Floor 2 - Bath

---



**Dimensions:** 7'10" x 10'5"  
**Area:** 57 sq. ft  
**Counted as living area:** Yes

**Heated:** Yes  
**Finished:** Yes  
**Enclosed:** Yes  
**Contiguous:** Yes  
**Permitted:** Yes  
**Wet space:** Yes  
**Addition:** No  
**Conversion:** No