

Home data report

150 Glenn Eagles View, Hiram, Paulding County, Georgia, United States, 30141



Total Area: 2129 sq. ft

Basement: 0 sq. ft, 1st Floor: 979 sq. ft, 2nd Floor: 1150 sq. ft

Excluded: Room 512 sq. ft, Bath 120 sq. ft, Utility 222 sq. ft, Undefined 31 sq. ft, Storage 39 sq. ft, Garage 463 sq. ft, Deck 286 sq. ft, Fireplace 12 sq. ft, Open to below 54 sq. ft, Walls: 251 sq. ft

Property summary



Home data report

150 Glenn Eagles View, Hiram, Paulding County, Georgia, United States, 30141

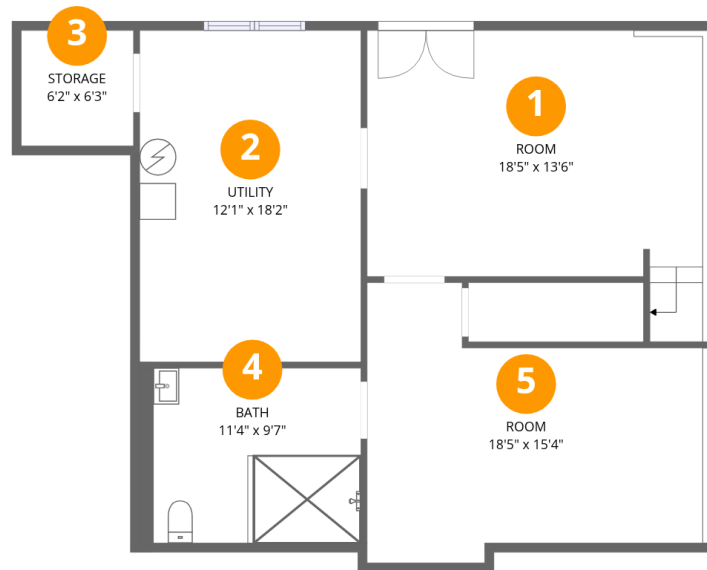


1
Half baths



1
Garages

150 Glenn Eagles View, Hiram, Paulding County, Georgia, United States, 30141



Room dimensions

Floor 1 Below grade

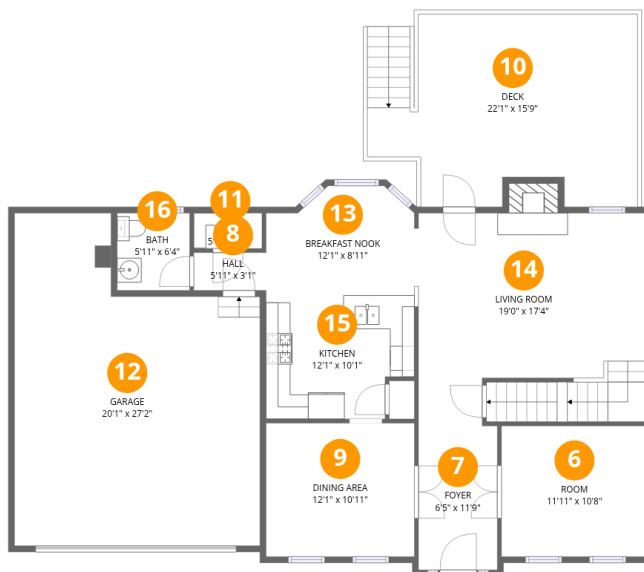
Total:0sqft

Excluded: 924sqft

#		Dimensions	sqft	Counted as living area
1	Room	18'5" x 13'6"	264 sq. ft	No
2	Utility	12'1" x 18'2"	220 sq. ft	No
3	Storage	6'2" x 6'3"	39 sq. ft	No
4	Bath	11'4" x 9'7"	116 sq. ft	No
5	Room	18'5" x 15'4"	226 sq. ft	No

Home data report

150 Glenn Eagles View, Hiram, Paulding County, Georgia, United States, 30141



Room dimensions

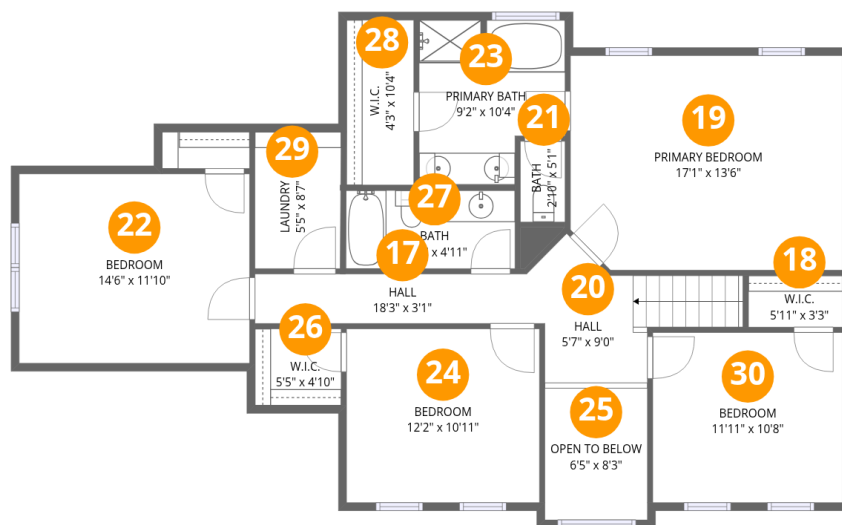
Floor 2

Total:979sqft

Excluded: 761sqft

#		Dimensions	sqft	Counted as living area
6	Room	11'11" x 10'8"	128 sq. ft	Yes
7	Foyer	6'5" x 11'9"	76 sq. ft	Yes
8	Hall	5'11" x 3'1"	18 sq. ft	Yes
9	Dining Area	12'1" x 10'11"	132 sq. ft	Yes
10	Deck	22'1" x 15'9"	286 sq. ft	No
11	Pantry	5'7" x 2'11"	16 sq. ft	Yes
12	Garage	20'1" x 27'2"	463 sq. ft	No
13	Breakfast Nook	12'1" x 8'11"	97 sq. ft	Yes
14	Living Room	19'0" x 17'4"	330 sq. ft	Yes
15	Kitchen	12'1" x 10'1"	114 sq. ft	Yes
16	Bath	5'11" x 6'4"	37 sq. ft	Yes

150 Glenn Eagles View, Hiram, Paulding County, Georgia, United States, 30141



Room dimensions

Floor 3

Total:1150sqft Excluded: 54sqft

#		Dimensions	sqft	Counted as living area
17	Hall	18'3" x 3'1"	57 sq. ft	Yes
18	W.I.C.	5'11" x 3'3"	19 sq. ft	Yes
19	Primary Bedroom	17'1" x 13'6"	228 sq. ft	Yes
20	Hall	5'7" x 9'0"	71 sq. ft	Yes
21	Bath	2'10" x 5'1"	14 sq. ft	Yes
22	Bedroom	14'6" x 11'10"	172 sq. ft	Yes
23	Primary Bath	9'2" x 10'4"	84 sq. ft	Yes
24	Bedroom	12'2" x 10'11"	132 sq. ft	Yes
25	Open To Below	6'5" x 8'3"	53 sq. ft	No
26	W.I.C.	5'5" x 4'10"	26 sq. ft	Yes
27	Bath	10'7" x 4'11"	52 sq. ft	Yes

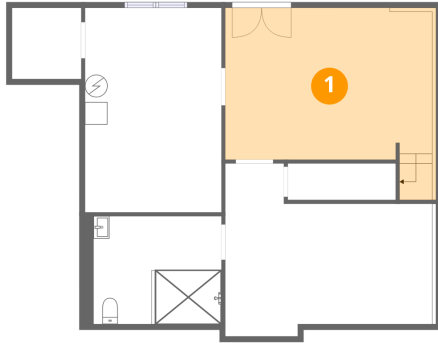
Home data report

150 Glenn Eagles View, Hiram, Paulding County, Georgia, United States, 30141

#		Dimensions	sqft	Counted as living area
28	W.I.C.	4'3" x 10'4"	44 sq. ft	Yes
29	Laundry	5'5" x 8'7"	46 sq. ft	Yes
30	Bedroom	11'11" x 10'8"	128 sq. ft	Yes

150 Glenn Eagles View, Hiram, Paulding County, Georgia, United States, 30141

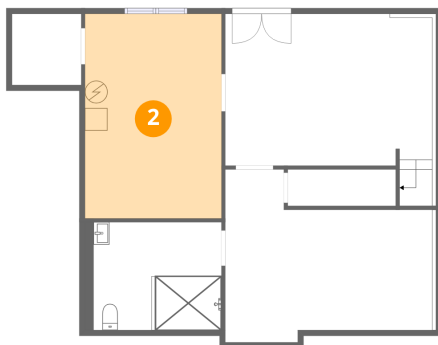
1 Floor 1 - Room



Dimensions: 18'5" x 13'6"
Area: 264 sq. ft
Counted as living area: No

Heated: Yes
Finished: No
Enclosed: Yes
Contiguous: Yes
Permitted: Yes
Wet space: No
Addition: No
Conversion: No

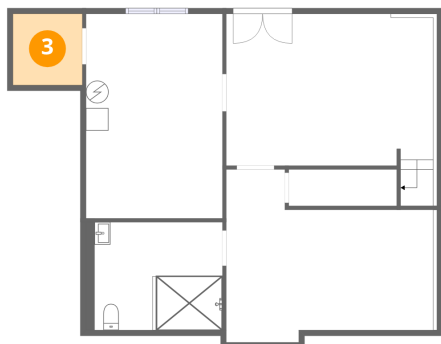
2 Floor 1 - Utility



Dimensions: 12'1" x 18'2"
Area: 220 sq. ft
Counted as living area: No

Heated: Yes
Finished: No
Enclosed: Yes
Contiguous: Yes
Permitted: Yes
Wet space: No
Addition: No
Conversion: No

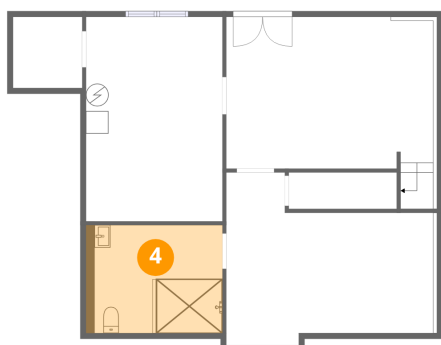
3 Floor 1 - Storage



Dimensions: 6'2" x 6'3"
Area: 39 sq. ft
Counted as living area: No

Heated: No
Finished: No
Enclosed: No
Contiguous: Yes
Permitted: Yes
Wet space: No
Addition: No
Conversion: No

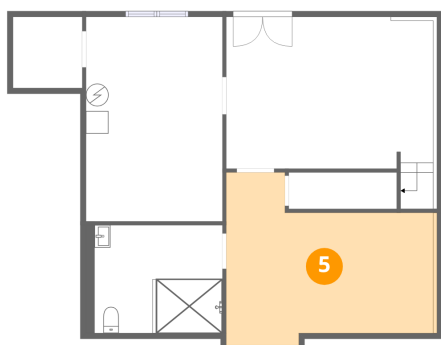
4 Floor 1 - Bath



Dimensions: 11'4" x 9'7"
Area: 116 sq. ft
Counted as living area: No

Heated: Yes
Finished: No
Enclosed: Yes
Contiguous: Yes
Permitted: Yes
Wet space: Yes
Addition: No
Conversion: No

5 Floor 1 - Room



Dimensions: 18'5" x 15'4"
Area: 226 sq. ft
Counted as living area: No

Heated: Yes
Finished: No
Enclosed: Yes
Contiguous: Yes
Permitted: Yes
Wet space: No
Addition: No
Conversion: No

150 Glenn Eagles View, Hiram, Paulding County, Georgia, United States, 30141

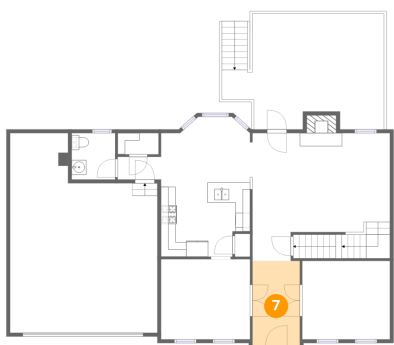
6 Floor 2 - Room



Dimensions: 11'11" x 10'8"
Area: 128 sq. ft
Counted as living area: Yes

Heated: Yes
Finished: Yes
Enclosed: Yes
Contiguous: Yes
Permitted: Yes
Wet space: No
Addition: No
Conversion: No

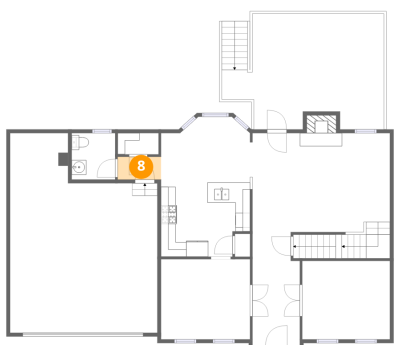
7 Floor 2 - Foyer



Dimensions: 6'5" x 11'9"
Area: 76 sq. ft
Counted as living area: Yes

Heated: Yes
Finished: Yes
Enclosed: Yes
Contiguous: Yes
Permitted: Yes
Wet space: No
Addition: No
Conversion: No

8 Floor 2 - Hall

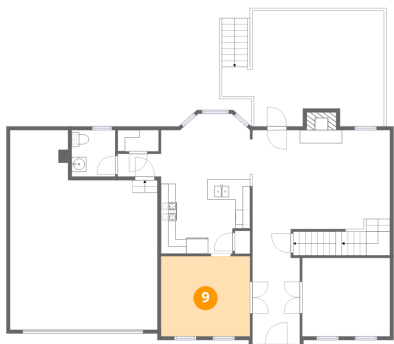


Dimensions: 5'11" x 3'1"
Area: 18 sq. ft
Counted as living area: Yes

Heated: Yes
Finished: Yes
Enclosed: Yes
Contiguous: Yes
Permitted: Yes
Wet space: No
Addition: No
Conversion: No

150 Glenn Eagles View, Hiram, Paulding County, Georgia, United States, 30141

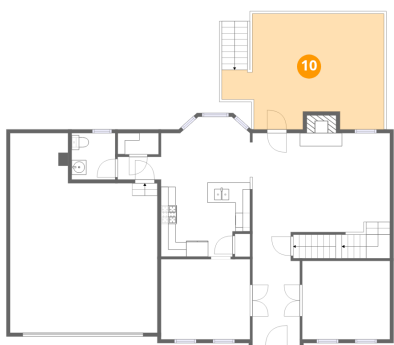
9 Floor 2 - Dining Area



Dimensions: 12'1" x 10'11"
Area: 132 sq. ft
Counted as living area: Yes

Heated: Yes
Finished: Yes
Enclosed: Yes
Contiguous: Yes
Permitted: Yes
Wet space: No
Addition: No
Conversion: No

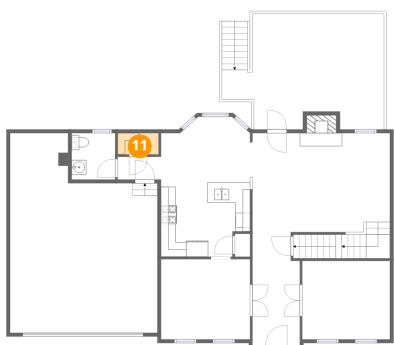
10 Floor 2 - Deck



Dimensions: 22'1" x 15'9"
Area: 286 sq. ft
Counted as living area: No

Heated: No
Finished: No
Enclosed: No
Contiguous: Yes
Permitted: Yes
Wet space: No
Addition: No
Conversion: No

11 Floor 2 - Pantry

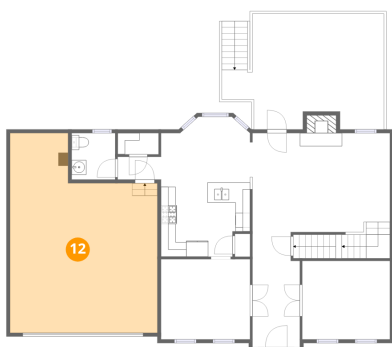


Dimensions: 5'7" x 2'11"
Area: 16 sq. ft
Counted as living area: Yes

Heated: Yes
Finished: Yes
Enclosed: Yes
Contiguous: Yes
Permitted: Yes
Wet space: No
Addition: No
Conversion: No

150 Glenn Eagles View, Hiram, Paulding County, Georgia, United States, 30141

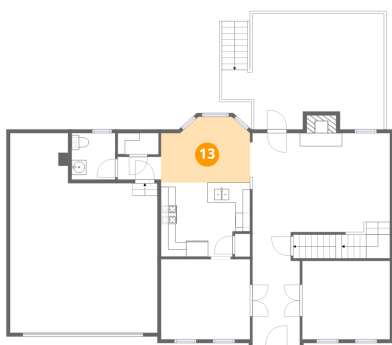
12 Floor 2 - Garage



Dimensions: 20'1" x 27'2"
Area: 463 sq. ft
Counted as living area: No

Heated: No
Finished: No
Enclosed: Yes
Contiguous: Yes
Permitted: Yes
Wet space: No
Addition: No
Conversion: No

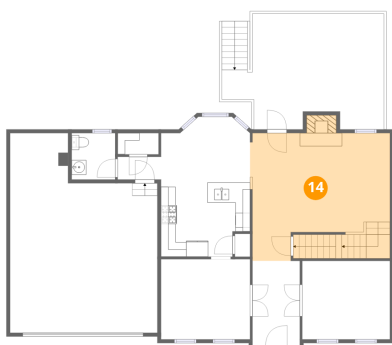
13 Floor 2 - Breakfast Nook



Dimensions: 12'1" x 8'11"
Area: 97 sq. ft
Counted as living area: Yes

Heated: Yes
Finished: Yes
Enclosed: Yes
Contiguous: Yes
Permitted: Yes
Wet space: No
Addition: No
Conversion: No

14 Floor 2 - Living Room

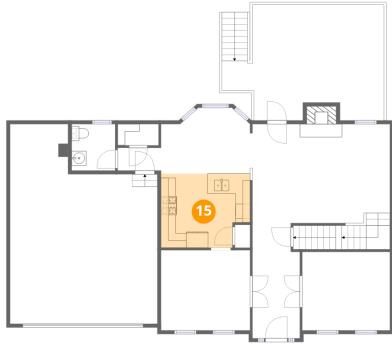


Dimensions: 19'0" x 17'4"
Area: 330 sq. ft
Counted as living area: Yes

Heated: Yes
Finished: Yes
Enclosed: Yes
Contiguous: Yes
Permitted: Yes
Wet space: No
Addition: No
Conversion: No

150 Glenn Eagles View, Hiram, Paulding County, Georgia, United States, 30141

15 Floor 2 - Kitchen



Dimensions: 12'1" x 10'1"
Area: 114 sq. ft
Counted as living area: Yes

Heated: Yes
Finished: Yes
Enclosed: Yes
Contiguous: Yes
Permitted: Yes
Wet space: No
Addition: No
Conversion: No

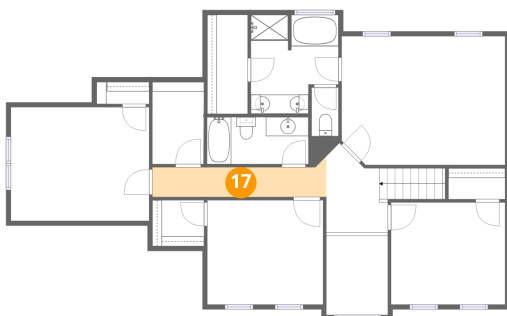
16 Floor 2 - Bath



Dimensions: 5'11" x 6'4"
Area: 37 sq. ft
Counted as living area: Yes

Heated: Yes
Finished: Yes
Enclosed: Yes
Contiguous: Yes
Permitted: Yes
Wet space: Yes
Addition: No
Conversion: No

17 Floor 3 - Hall

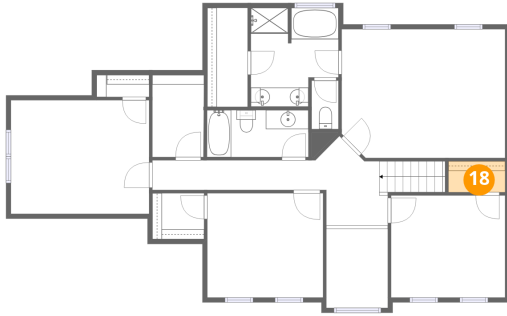


Dimensions: 18'3" x 3'1"
Area: 57 sq. ft
Counted as living area: Yes

Heated: Yes
Finished: Yes
Enclosed: Yes
Contiguous: Yes
Permitted: Yes
Wet space: No
Addition: No
Conversion: No

150 Glenn Eagles View, Hiram, Paulding County, Georgia, United States, 30141

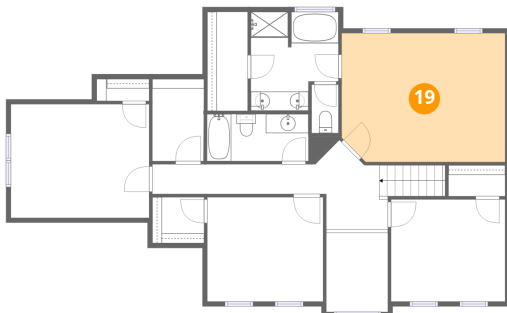
18 Floor 3 - W.I.C.



Dimensions: 5'11" x 3'3"
Area: 19 sq. ft
Counted as living area: Yes

Heated: Yes
Finished: Yes
Enclosed: Yes
Contiguous: Yes
Permitted: Yes
Wet space: No
Addition: No
Conversion: No

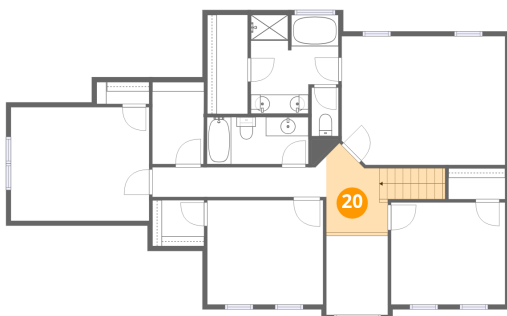
19 Floor 3 - Primary Bedroom



Dimensions: 17'1" x 13'6"
Area: 228 sq. ft
Counted as living area: Yes

Heated: Yes
Finished: Yes
Enclosed: Yes
Contiguous: Yes
Permitted: Yes
Wet space: No
Addition: No
Conversion: No

20 Floor 3 - Hall

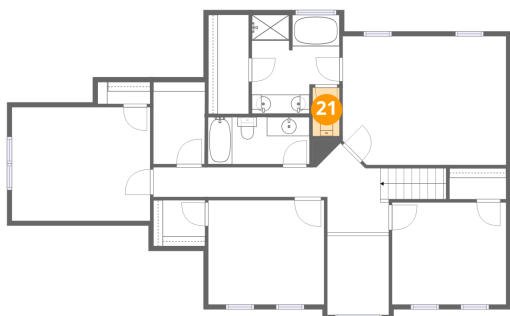


Dimensions: 5'7" x 9'0"
Area: 71 sq. ft
Counted as living area: Yes

Heated: Yes
Finished: Yes
Enclosed: Yes
Contiguous: Yes
Permitted: Yes
Wet space: No
Addition: No
Conversion: No

150 Glenn Eagles View, Hiram, Paulding County, Georgia, United States, 30141

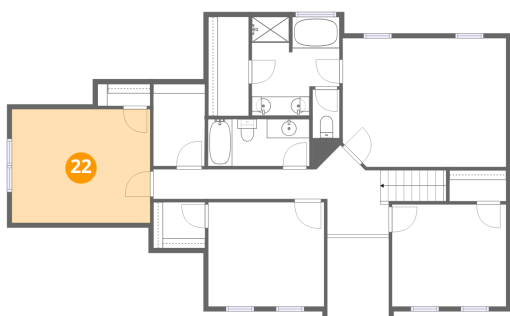
21 Floor 3 - Bath



Dimensions: 2'10" x 5'1"
Area: 14 sq. ft
Counted as living area: Yes

Heated: Yes
Finished: Yes
Enclosed: Yes
Contiguous: Yes
Permitted: Yes
Wet space: Yes
Addition: No
Conversion: No

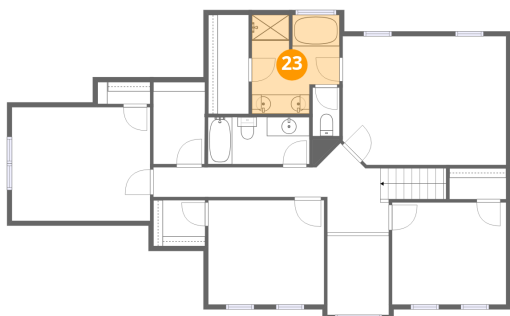
22 Floor 3 - Bedroom



Dimensions: 14'6" x 11'10"
Area: 172 sq. ft
Counted as living area: Yes

Heated: Yes
Finished: Yes
Enclosed: Yes
Contiguous: Yes
Permitted: Yes
Wet space: No
Addition: No
Conversion: No

23 Floor 3 - Primary Bath

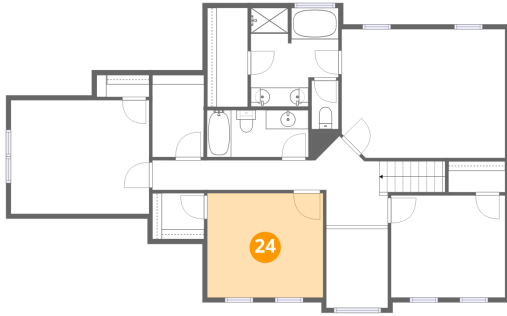


Dimensions: 9'2" x 10'4"
Area: 84 sq. ft
Counted as living area: Yes

Heated: Yes
Finished: Yes
Enclosed: Yes
Contiguous: Yes
Permitted: Yes
Wet space: Yes
Addition: No
Conversion: No

150 Glenn Eagles View, Hiram, Paulding County, Georgia, United States, 30141

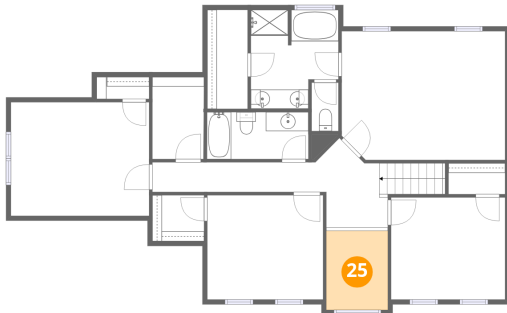
24 Floor 3 - Bedroom



Dimensions: 12'2" x 10'11"
Area: 132 sq. ft
Counted as living area: Yes

Heated: Yes
Finished: Yes
Enclosed: Yes
Contiguous: Yes
Permitted: Yes
Wet space: No
Addition: No
Conversion: No

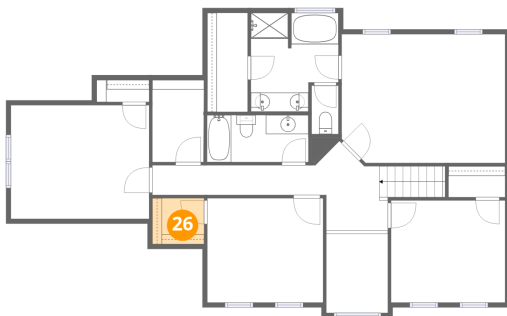
25 Floor 3 - Open To Below



Dimensions: 6'5" x 8'3"
Area: 53 sq. ft
Counted as living area: No

Heated: No
Finished: No
Enclosed: No
Contiguous: Yes
Permitted: No
Wet space: No
Addition: No
Conversion: No

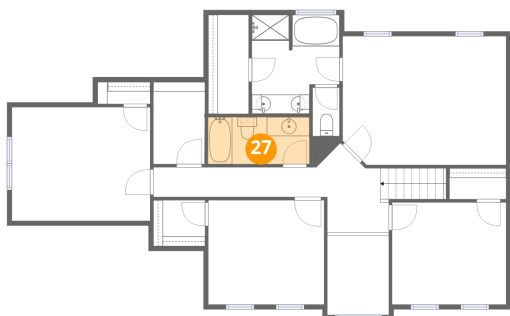
26 Floor 3 - W.I.C.



Dimensions: 5'5" x 4'10"
Area: 26 sq. ft
Counted as living area: Yes

Heated: Yes
Finished: Yes
Enclosed: Yes
Contiguous: Yes
Permitted: Yes
Wet space: No
Addition: No
Conversion: No

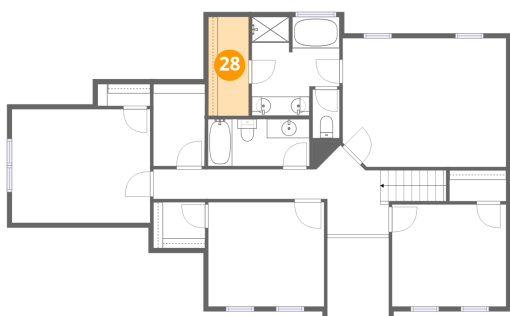
27 Floor 3 - Bath



Dimensions: 10'7" x 4'11"
Area: 52 sq. ft
Counted as living area: Yes

Heated: Yes
Finished: Yes
Enclosed: Yes
Contiguous: Yes
Permitted: Yes
Wet space: Yes
Addition: No
Conversion: No

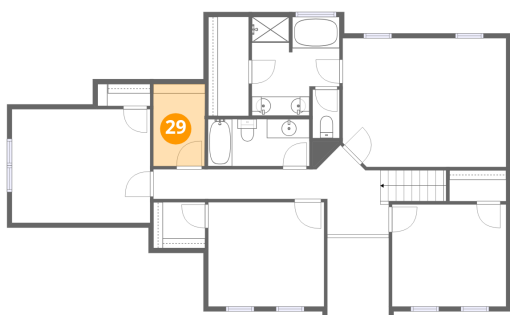
28 Floor 3 - W.I.C.



Dimensions: 4'3" x 10'4"
Area: 44 sq. ft
Counted as living area: Yes

Heated: Yes
Finished: Yes
Enclosed: Yes
Contiguous: Yes
Permitted: Yes
Wet space: No
Addition: No
Conversion: No

29 Floor 3 - Laundry

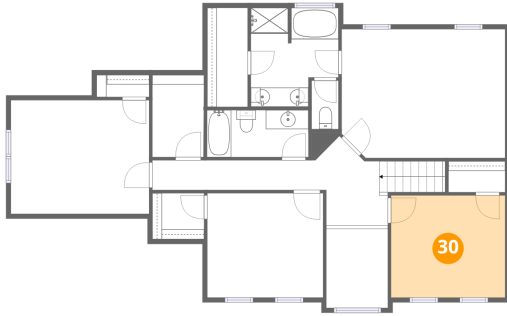


Dimensions: 5'5" x 8'7"
Area: 46 sq. ft
Counted as living area: Yes

Heated: Yes
Finished: Yes
Enclosed: Yes
Contiguous: Yes
Permitted: Yes
Wet space: No
Addition: No
Conversion: No

150 Glenn Eagles View, Hiram, Paulding County, Georgia, United States, 30141

30 Floor 3 - Bedroom



Dimensions: 11'11" x 10'8"
Area: 128 sq. ft
Counted as living area: Yes

Heated: Yes
Finished: Yes
Enclosed: Yes
Contiguous: Yes
Permitted: Yes
Wet space: No
Addition: No
Conversion: No