

## Home data report

103 Ali Lane, Jacksboro, Campbell County, Tennessee, United States, 37757



**Total Area: 2048 sq. ft**

1st Floor: 907 sq. ft, 2nd Floor: 1141 sq. ft

Excluded: Garage 489 sq. ft, Porch 122 sq. ft, Deck 72 sq. ft, Fireplace 10 sq. ft, Walls: 179 sq. ft

## Property summary



Home data report

**103 Ali Lane, Jacksboro, Campbell County, Tennessee, United States, 37757**



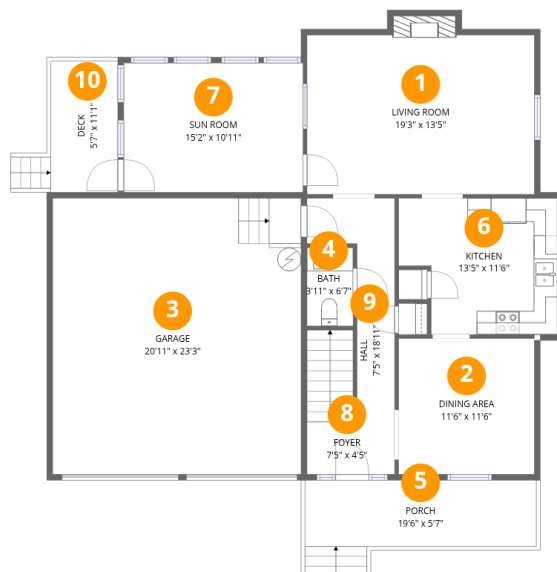
**1**  
Half baths



**1**  
Garages

Home data report

103 Ali Lane, Jacksboro, Campbell County, Tennessee, United States, 37757



## Room dimensions

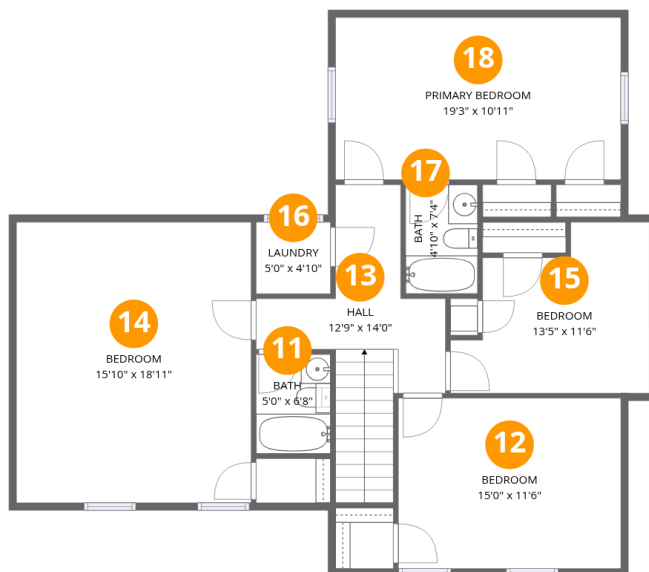
Floor 1

Total:907sqft Excluded: 693sqft

#		Dimensions	sqft	Counted as living area
1	Living Room	19'3" x 13'5"	267 sq. ft	Yes
2	Dining Area	11'6" x 11'6"	132 sq. ft	Yes
3	Garage	20'11" x 23'3"	489 sq. ft	No
4	Bath	3'11" x 6'7"	26 sq. ft	Yes
5	Porch	19'6" x 5'7"	122 sq. ft	No
6	Kitchen	13'5" x 11'6"	138 sq. ft	Yes
7	Sun Room	15'2" x 10'11"	165 sq. ft	Yes
8	Foyer	7'5" x 4'5"	33 sq. ft	Yes
9	Hall	7'5" x 18'11"	107 sq. ft	Yes
10	Deck	5'7" x 11'1"	72 sq. ft	No

## Home data report

103 Ali Lane, Jacksboro, Campbell County, Tennessee, United States, 37757



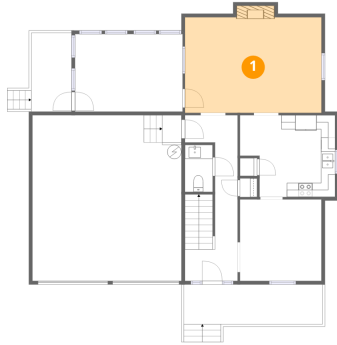
## Room dimensions

Floor 2

Total:1141sqft Excluded: 0sqft

#		Dimensions	sqft	Counted as living area
11	Bath	5'0" x 6'8"	34 sq. ft	Yes
12	Bedroom	15'0" x 11'6"	172 sq. ft	Yes
13	Hall	12'9" x 14'0"	128 sq. ft	Yes
14	Bedroom	15'10" x 18'11"	299 sq. ft	Yes
15	Bedroom	13'5" x 11'6"	123 sq. ft	Yes
16	Laundry	5'0" x 4'10"	24 sq. ft	Yes
17	Bath	4'10" x 7'4"	36 sq. ft	Yes
18	Primary Bedroom	19'3" x 10'11"	210 sq. ft	Yes

## 1 Floor 1 - Living Room



Dimensions: 19'3" x 13'5"  
Area: 267 sq. ft  
Counted as living area: Yes

Heated: Yes  
Finished: Yes  
Enclosed: Yes  
Contiguous: Yes  
Permitted: Yes  
Wet space: No  
Addition: No  
Conversion: No

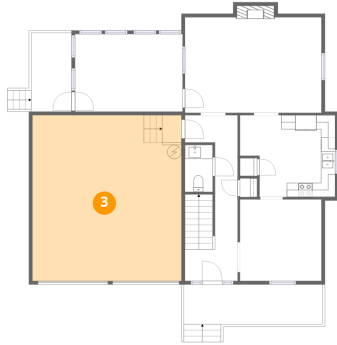
## 2 Floor 1 - Dining Area



Dimensions: 11'6" x 11'6"  
Area: 132 sq. ft  
Counted as living area: Yes

Heated: Yes  
Finished: Yes  
Enclosed: Yes  
Contiguous: Yes  
Permitted: Yes  
Wet space: No  
Addition: No  
Conversion: No

### 3 Floor 1 - Garage



Dimensions: 20'11" x 23'3"  
Area: 489 sq. ft  
Counted as living area: No

Heated: No  
Finished: No  
Enclosed: Yes  
Contiguous: Yes  
Permitted: Yes  
Wet space: No  
Addition: No  
Conversion: No

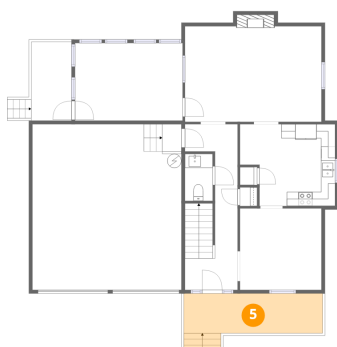
### 4 Floor 1 - Bath



Dimensions: 3'11" x 6'7"  
Area: 26 sq. ft  
Counted as living area: Yes

Heated: Yes  
Finished: Yes  
Enclosed: Yes  
Contiguous: Yes  
Permitted: Yes  
Wet space: Yes  
Addition: No  
Conversion: No

### 5 Floor 1 - Porch



Dimensions: 19'6" x 5'7"  
Area: 122 sq. ft  
Counted as living area: No

Heated: No  
Finished: No  
Enclosed: No  
Contiguous: Yes  
Permitted: Yes  
Wet space: No  
Addition: No  
Conversion: No

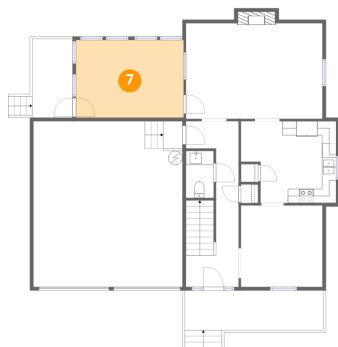
### 6 Floor 1 - Kitchen



Dimensions: 13'5" x 11'6"  
Area: 138 sq. ft  
Counted as living area: Yes

Heated: Yes  
Finished: Yes  
Enclosed: Yes  
Contiguous: Yes  
Permitted: Yes  
Wet space: No  
Addition: No  
Conversion: No

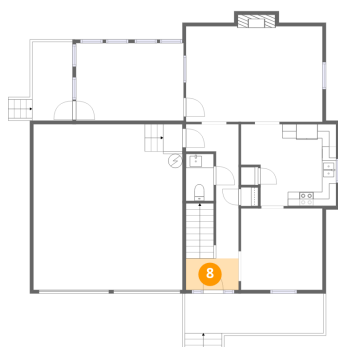
### 7 Floor 1 - Sun Room



Dimensions: 15'2" x 10'11"  
Area: 165 sq. ft  
Counted as living area: Yes

Heated: Yes  
Finished: Yes  
Enclosed: Yes  
Contiguous: Yes  
Permitted: Yes  
Wet space: No  
Addition: No  
Conversion: No

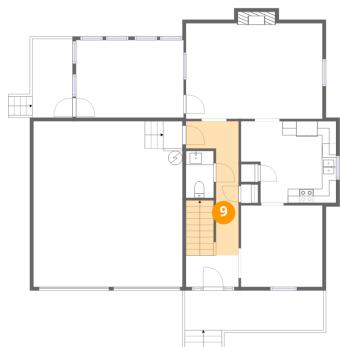
### 8 Floor 1 - Foyer



Dimensions: 7'5" x 4'5"  
Area: 33 sq. ft  
Counted as living area: Yes

Heated: Yes  
Finished: Yes  
Enclosed: Yes  
Contiguous: Yes  
Permitted: Yes  
Wet space: No  
Addition: No  
Conversion: No

### 9 Floor 1 - Hall



Dimensions: 7'5" x 18'11"  
Area: 107 sq. ft  
Counted as living area: Yes

Heated: Yes  
Finished: Yes  
Enclosed: Yes  
Contiguous: Yes  
Permitted: Yes  
Wet space: No  
Addition: No  
Conversion: No

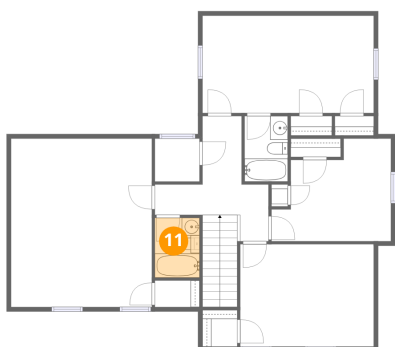
### 10 Floor 1 - Deck



Dimensions: 5'7" x 11'1"  
Area: 72 sq. ft  
Counted as living area: No

Heated: No  
Finished: No  
Enclosed: No  
Contiguous: Yes  
Permitted: Yes  
Wet space: No  
Addition: No  
Conversion: No

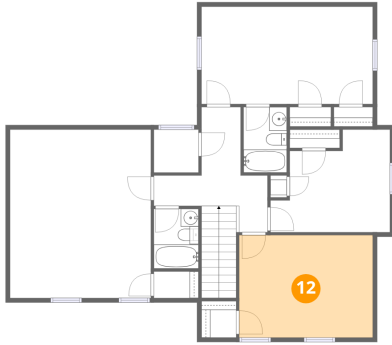
### 11 Floor 2 - Bath



Dimensions: 5'0" x 6'8"  
Area: 34 sq. ft  
Counted as living area: Yes

Heated: Yes  
Finished: Yes  
Enclosed: Yes  
Contiguous: Yes  
Permitted: Yes  
Wet space: Yes  
Addition: No  
Conversion: No

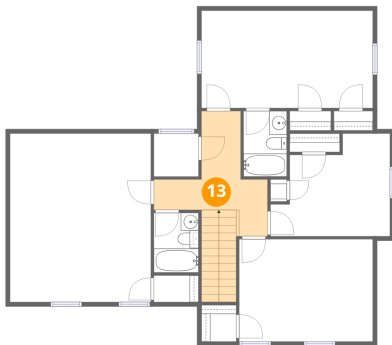
**12** Floor 2 - Bedroom



Dimensions: 15'0" x 11'6"  
Area: 172 sq. ft  
Counted as living area: Yes

Heated: Yes  
Finished: Yes  
Enclosed: Yes  
Contiguous: Yes  
Permitted: Yes  
Wet space: No  
Addition: No  
Conversion: No

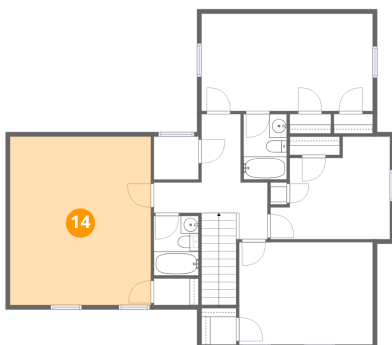
**13** Floor 2 - Hall



Dimensions: 12'9" x 14'0"  
Area: 128 sq. ft  
Counted as living area: Yes

Heated: Yes  
Finished: Yes  
Enclosed: Yes  
Contiguous: Yes  
Permitted: Yes  
Wet space: No  
Addition: No  
Conversion: No

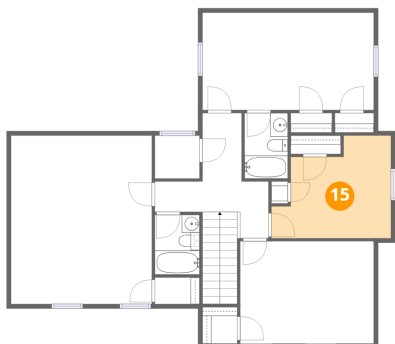
**14** Floor 2 - Bedroom



Dimensions: 15'10" x 18'11"  
Area: 299 sq. ft  
Counted as living area: Yes

Heated: Yes  
Finished: Yes  
Enclosed: Yes  
Contiguous: Yes  
Permitted: Yes  
Wet space: No  
Addition: No  
Conversion: No

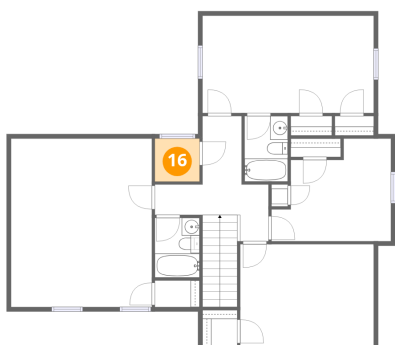
### 15 Floor 2 - Bedroom



Dimensions: 13'5" x 11'6"  
Area: 123 sq. ft  
Counted as living area: Yes

Heated: Yes  
Finished: Yes  
Enclosed: Yes  
Contiguous: Yes  
Permitted: Yes  
Wet space: No  
Addition: No  
Conversion: No

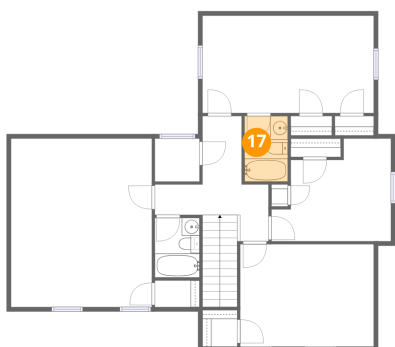
### 16 Floor 2 - Laundry



Dimensions: 5'0" x 4'10"  
Area: 24 sq. ft  
Counted as living area: Yes

Heated: Yes  
Finished: Yes  
Enclosed: Yes  
Contiguous: Yes  
Permitted: Yes  
Wet space: No  
Addition: No  
Conversion: No

### 17 Floor 2 - Bath



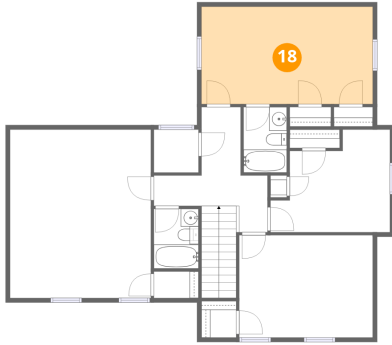
Dimensions: 4'10" x 7'4"  
Area: 36 sq. ft  
Counted as living area: Yes

Heated: Yes  
Finished: Yes  
Enclosed: Yes  
Contiguous: Yes  
Permitted: Yes  
Wet space: Yes  
Addition: No  
Conversion: No

Home data report

103 Ali Lane, Jacksboro, Campbell County, Tennessee, United States, 37757

## 18 Floor 2 - Primary Bedroom



Dimensions: 19'3" x 10'11"  
Area: 210 sq. ft  
Counted as living area: Yes

Heated: Yes  
Finished: Yes  
Enclosed: Yes  
Contiguous: Yes  
Permitted: Yes  
Wet space: No  
Addition: No  
Conversion: No