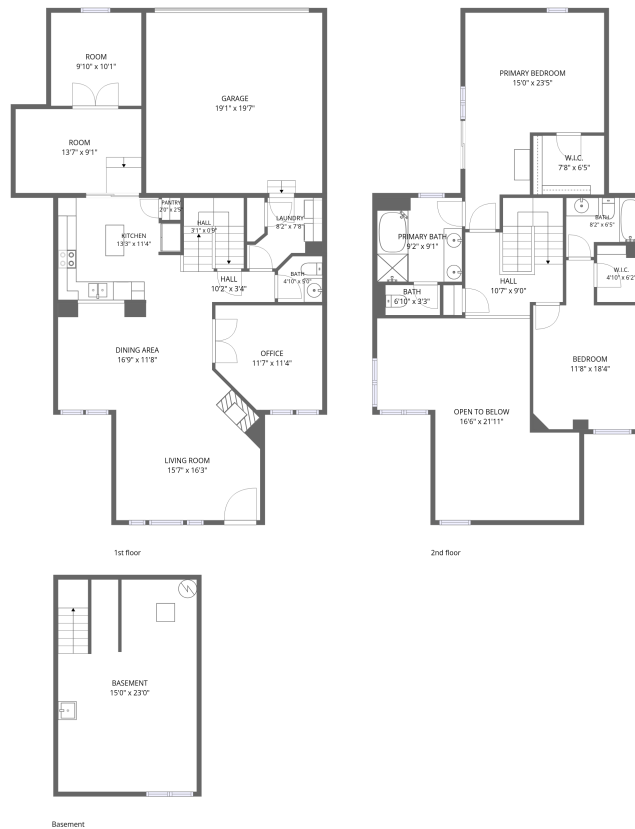


Home data report

680 S Yarrow St, Lakewood, CO, US




Total Area: 2272 sq. ft

Basement: 0 sq. ft, 1st Floor: 1449 sq. ft, 2nd Floor: 823 sq. ft

Excluded: Basement 345 sq. ft, Open to below 338 sq. ft, Walls: 203 sq. ft

Property summary

 **3** Floors

 **2** Bedrooms

 **2** Bathrooms

Home data report

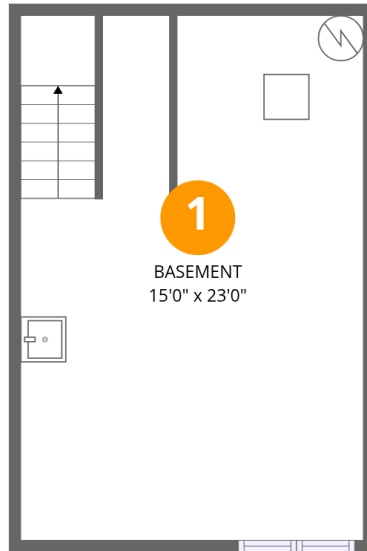
680 S Yarrow St, Lakewood, CO, US



1
Half baths



1
Garages



Room dimensions

Floor 1 Below grade

Total: 0sqft

Excluded: 345sqft

#		Dimensions	sqft	Counted as living area
1	Basement	15'0" x 23'0"	340 sq. ft	No



Room dimensions

Floor 2

Total: 1449 sqft

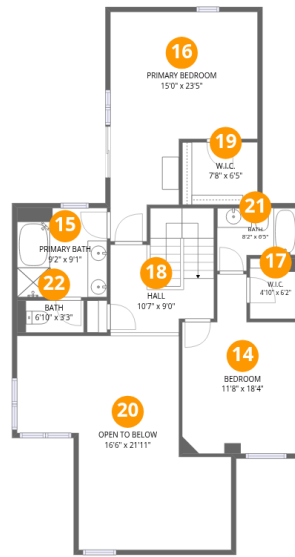
Excluded: 0 sqft

#		Dimensions	sqft	Counted as living area
2	Living Room	15'7" x 16'3"	196 sq. ft	Yes
3	Pantry	2'0" x 2'5"	5 sq. ft	Yes
4	Garage	19'1" x 19'7"	373 sq. ft	Yes
5	Room	13'7" x 9'1"	124 sq. ft	Yes
6	Laundry	8'2" x 7'8"	45 sq. ft	Yes
7	Room	9'10" x 10'1"	99 sq. ft	Yes
8	Hall	10'2" x 3'4"	34 sq. ft	Yes
9	Hall	3'1" x 0'9"	52 sq. ft	Yes
10	Bath	4'10" x 5'0"	23 sq. ft	Yes
11	Dining Area	16'9" x 11'8"	194 sq. ft	Yes
12	Kitchen	13'3" x 11'4"	142 sq. ft	Yes

Home data report

680 S Yarrow St,Lakewood,CO,US

#		Dimensions	sqft	Counted as living area
13	Office	11'7" x 11'4"	121 sq. ft	Yes



Room dimensions

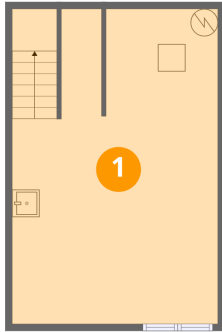
Floor 3

Total: 823 sqft

Excluded: 338 sqft

#		Dimensions	sqft	Counted as living area
14	Bedroom	11'8" x 18'4"	173 sq. ft	Yes
15	Primary Bath	9'2" x 9'1"	84 sq. ft	Yes
16	Primary Bedroom	15'0" x 23'5"	257 sq. ft	Yes
17	W.I.C.	4'10" x 6'2"	30 sq. ft	Yes
18	Hall	10'7" x 9'0"	117 sq. ft	Yes
19	W.I.C.	7'8" x 6'5"	49 sq. ft	Yes
20	Open To Below	16'6" x 21'11"	338 sq. ft	No
21	Bath	8'2" x 6'5"	44 sq. ft	Yes
22	Bath	6'10" x 3'3"	22 sq. ft	Yes

1 Floor 1 - Basement



Dimensions: 15'0" x 23'0"
Area: 340 sq. ft
Counted as living area: No

Heated: Yes
Finished: No
Enclosed: Yes
Contiguous: Yes
Permitted: Yes
Wet space: No
Addition: No
Conversion: No

2 Floor 2 - Living Room



Dimensions: 15'7" x 16'3"
Area: 196 sq. ft
Counted as living area: Yes

Heated: Yes
Finished: Yes
Enclosed: Yes
Contiguous: Yes
Permitted: Yes
Wet space: No
Addition: No
Conversion: No

3 Floor 2 - Pantry



Dimensions: 2'0" x 2'5"
Area: 5 sq. ft
Counted as living area: Yes

Heated: Yes
Finished: Yes
Enclosed: Yes
Contiguous: Yes
Permitted: Yes
Wet space: No
Addition: No
Conversion: No

4 Floor 2 - Garage



Dimensions: 19'1" x 19'7"
Area: 373 sq. ft
Counted as living area: No

Heated: No
Finished: Yes
Enclosed: Yes
Contiguous: Yes
Permitted: Yes
Wet space: No
Addition: No
Conversion: No

5 Floor 2 - Room



Dimensions: 13'7" x 9'1"
Area: 124 sq. ft
Counted as living area: Yes

Heated: Yes
Finished: Yes
Enclosed: Yes
Contiguous: Yes
Permitted: Yes
Wet space: No
Addition: No
Conversion: No

6 Floor 2 - Laundry



Dimensions: 8'2" x 7'8"
Area: 45 sq. ft
Counted as living area: Yes

Heated: Yes
Finished: Yes
Enclosed: Yes
Contiguous: Yes
Permitted: Yes
Wet space: No
Addition: No
Conversion: No

7 Floor 2 - Room



Dimensions: 9'10" x 10'1"
Area: 99 sq. ft
Counted as living area: Yes

Heated: Yes
Finished: Yes
Enclosed: Yes
Contiguous: Yes
Permitted: Yes
Wet space: No
Addition: No
Conversion: No

8 Floor 2 - Hall



Dimensions: 10'2" x 3'4"
Area: 34 sq. ft
Counted as living area: Yes

Heated: Yes
Finished: Yes
Enclosed: Yes
Contiguous: Yes
Permitted: Yes
Wet space: No
Addition: No
Conversion: No

9 Floor 2 - Hall



Dimensions: 3'1" x 0'9"
Area: 52 sq. ft
Counted as living area: Yes

Heated: Yes
Finished: Yes
Enclosed: Yes
Contiguous: Yes
Permitted: Yes
Wet space: No
Addition: No
Conversion: No

10 Floor 2 - Bath



Dimensions: 4'10" x 5'0"
Area: 23 sq. ft
Counted as living area: Yes

Heated: Yes
Finished: Yes
Enclosed: Yes
Contiguous: Yes
Permitted: Yes
Wet space: Yes
Addition: No
Conversion: No

11 Floor 2 - Dining Area



Dimensions: 16'9" x 11'8"
Area: 194 sq. ft
Counted as living area: Yes

Heated: Yes
Finished: Yes
Enclosed: Yes
Contiguous: Yes
Permitted: Yes
Wet space: No
Addition: No
Conversion: No

12 Floor 2 - Kitchen



Dimensions: 13'3" x 11'4"
Area: 142 sq. ft
Counted as living area: Yes

Heated: Yes
Finished: Yes
Enclosed: Yes
Contiguous: Yes
Permitted: Yes
Wet space: No
Addition: No
Conversion: No

13 Floor 2 - Office



Dimensions: 11'7" x 11'4"
Area: 121 sq. ft
Counted as living area: Yes

Heated: Yes
Finished: Yes
Enclosed: Yes
Contiguous: Yes
Permitted: Yes
Wet space: No
Addition: No
Conversion: No

14 Floor 3 - Bedroom



Dimensions: 11'8" x 18'4"
Area: 173 sq. ft
Counted as living area: Yes

Heated: Yes
Finished: Yes
Enclosed: Yes
Contiguous: Yes
Permitted: Yes
Wet space: No
Addition: No
Conversion: No

15 Floor 3 - Primary Bath



Dimensions: 9'2" x 9'1"
Area: 84 sq. ft
Counted as living area: Yes

Heated: Yes
Finished: Yes
Enclosed: Yes
Contiguous: Yes
Permitted: Yes
Wet space: Yes
Addition: No
Conversion: No

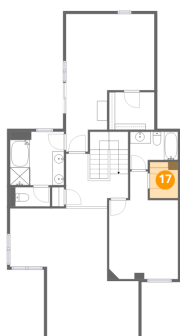
16 Floor 3 - Primary Bedroom



Dimensions: 15'0" x 23'5"
Area: 257 sq. ft
Counted as living area: Yes

Heated: Yes
Finished: Yes
Enclosed: Yes
Contiguous: Yes
Permitted: Yes
Wet space: No
Addition: No
Conversion: No

17 Floor 3 - W.I.C.



Dimensions: 4'10" x 6'2"
Area: 30 sq. ft
Counted as living area: Yes

Heated: Yes
Finished: Yes
Enclosed: Yes
Contiguous: Yes
Permitted: Yes
Wet space: No
Addition: No
Conversion: No

18 Floor 3 - Hall



Dimensions: 10'7" x 9'0"
Area: 117 sq. ft
Counted as living area: Yes

Heated: Yes
Finished: Yes
Enclosed: Yes
Contiguous: Yes
Permitted: Yes
Wet space: No
Addition: No
Conversion: No

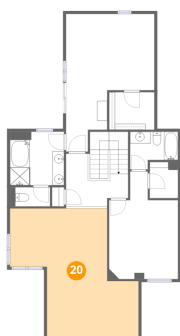
19 Floor 3 - W.I.C.



Dimensions: 7'8" x 6'5"
Area: 49 sq. ft
Counted as living area: Yes

Heated: Yes
Finished: Yes
Enclosed: Yes
Contiguous: Yes
Permitted: Yes
Wet space: No
Addition: No
Conversion: No

20 Floor 3 - Open To Below



Dimensions: 16'6" x 21'11"
Area: 338 sq. ft
Counted as living area: No

Heated: No
Finished: Yes
Enclosed: No
Contiguous: Yes
Permitted: No
Wet space: No
Addition: No
Conversion: No

21 Floor 3 - Bath



Dimensions: 8'2" x 6'5"
Area: 44 sq. ft
Counted as living area: Yes

Heated: Yes
Finished: Yes
Enclosed: Yes
Contiguous: Yes
Permitted: Yes
Wet space: Yes
Addition: No
Conversion: No

22 Floor 3 - Bath



Dimensions: 6'10" x 3'3"
Area: 22 sq. ft
Counted as living area: Yes

Heated: Yes
Finished: Yes
Enclosed: Yes
Contiguous: Yes
Permitted: Yes
Wet space: Yes
Addition: No
Conversion: No