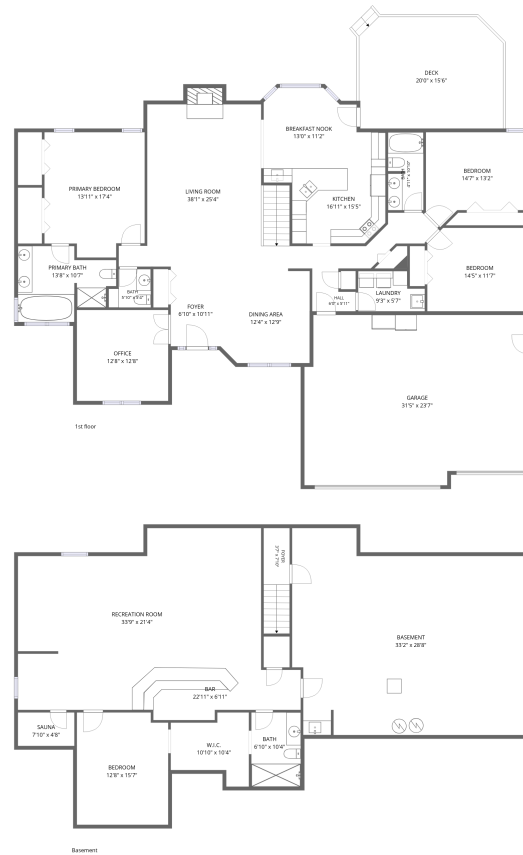


Home data report

6911 Prairie Dr, Spring Grove, IL, US



**Total Area: 4352 sq. ft**

Basement: 2161 sq. ft, 1st Floor: 2191 sq. ft

Excluded: Garage 710 sq. ft, Deck 305 sq. ft, Fireplace 14 sq. ft, Walls: 264 sq. ft

## Property summary

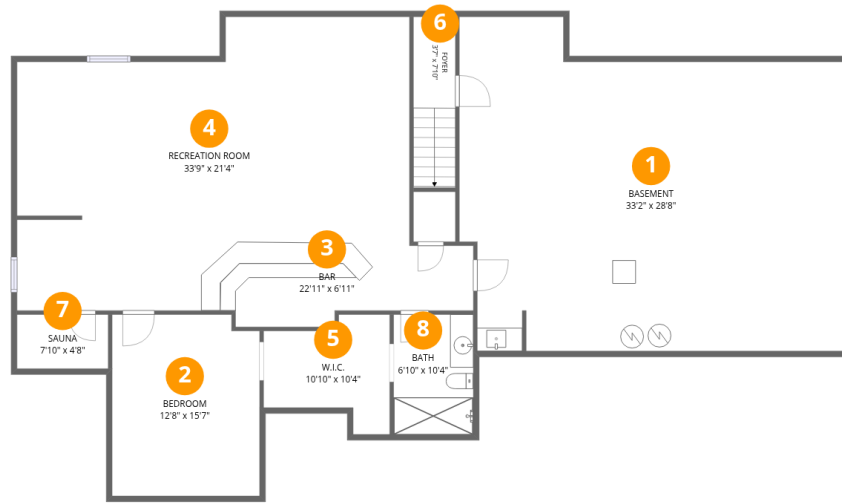


Home data report

# 6911 Prairie Dr, Spring Grove, IL, US

 **1**  
Half baths

 **1**  
Garages



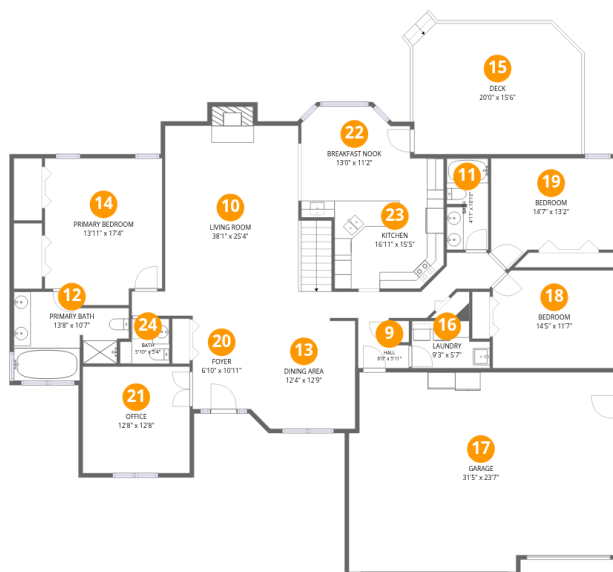
## Room dimensions

Floor 1 Below grade

Total: 2161 sqft

Excluded: 0 sqft

#		Dimensions	sqft	Counted as living area
1	Basement	33'2" x 28'8"	841 sq. ft	Yes
2	Bedroom	12'8" x 15'7"	194 sq. ft	Yes
3	Bar	22'11" x 6'11"	140 sq. ft	Yes
4	Recreation Room	33'9" x 21'4"	682 sq. ft	Yes
5	W.I.C.	10'10" x 10'4"	85 sq. ft	Yes
6	Foyer	3'7" x 7'10"	53 sq. ft	Yes
7	Sauna	7'10" x 4'8"	36 sq. ft	Yes
8	Bath	6'10" x 10'4"	71 sq. ft	Yes



## Room dimensions

Floor 2

Total: 2191 sqft

Excluded: 1029 sqft

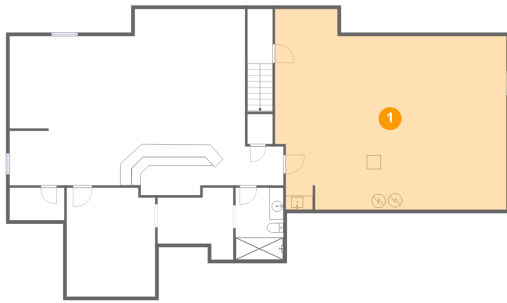
#		Dimensions	sqft	Counted as living area
9	Hall	6'0" x 5'11"	28 sq. ft	Yes
10	Living Room	38'1" x 25'4"	503 sq. ft	Yes
11	Bath	4'11" x 10'10"	52 sq. ft	Yes
12	Primary Bath	13'8" x 10'7"	116 sq. ft	Yes
13	Dining Area	12'4" x 12'9"	155 sq. ft	Yes
14	Primary Bedroom	13'11" x 17'4"	225 sq. ft	Yes
15	Deck	20'0" x 15'6"	305 sq. ft	No
16	Laundry	9'3" x 5'7"	46 sq. ft	Yes
17	Garage	31'5" x 23'7"	710 sq. ft	No
18	Bedroom	14'5" x 11'7"	164 sq. ft	Yes
19	Bedroom	14'7" x 13'2"	163 sq. ft	Yes

Home data report

**6911 Prairie Dr, Spring Grove, IL, US**

#		Dimensions	sqft	Counted as living area
20	Foyer	6'10" x 10'11"	72 sq. ft	Yes
21	Office	12'8" x 12'8"	160 sq. ft	Yes
22	Breakfast Nook	13'0" x 11'2"	135 sq. ft	Yes
23	Kitchen	16'11" x 15'5"	158 sq. ft	Yes
24	Bath	5'10" x 5'4"	27 sq. ft	Yes

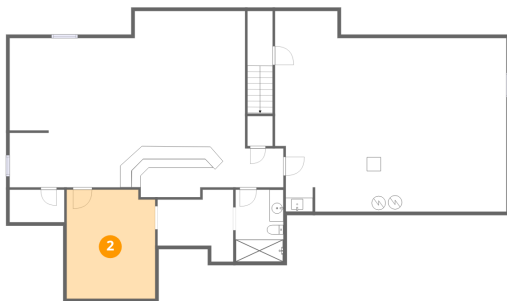
## 1 Floor 1 - Basement



Dimensions: 33'2" x 28'8"  
Area: 841 sq. ft  
Counted as living area: Yes

Heated: Yes  
Finished: Yes  
Enclosed: Yes  
Contiguous: Yes  
Permitted: Yes  
Wet space: No  
Addition: No  
Conversion: No

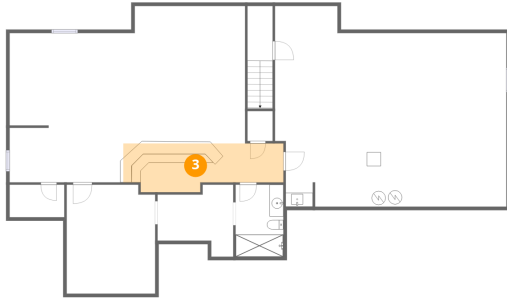
## 2 Floor 1 - Bedroom



Dimensions: 12'8" x 15'7"  
Area: 194 sq. ft  
Counted as living area: Yes

Heated: Yes  
Finished: Yes  
Enclosed: Yes  
Contiguous: Yes  
Permitted: Yes  
Wet space: No  
Addition: No  
Conversion: No

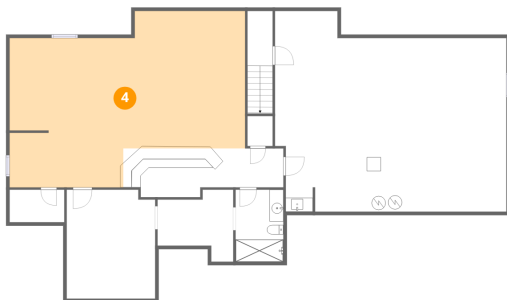
### 3 Floor 1 - Bar



Dimensions: 22'11" x 6'11"  
Area: 140 sq. ft  
Counted as living area: Yes

Heated: Yes  
Finished: Yes  
Enclosed: Yes  
Contiguous: Yes  
Permitted: Yes  
Wet space: No  
Addition: No  
Conversion: No

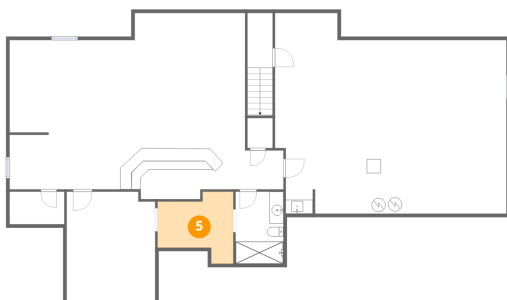
### 4 Floor 1 - Recreation Room



Dimensions: 33'9" x 21'4"  
Area: 682 sq. ft  
Counted as living area: Yes

Heated: Yes  
Finished: Yes  
Enclosed: Yes  
Contiguous: Yes  
Permitted: Yes  
Wet space: No  
Addition: No  
Conversion: No

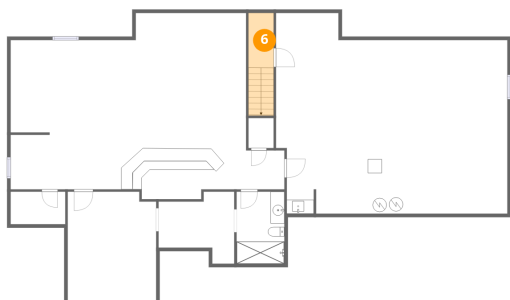
### 5 Floor 1 - W.I.C.



Dimensions: 10'10" x 10'4"  
Area: 85 sq. ft  
Counted as living area: Yes

Heated: Yes  
Finished: Yes  
Enclosed: Yes  
Contiguous: Yes  
Permitted: Yes  
Wet space: No  
Addition: No  
Conversion: No

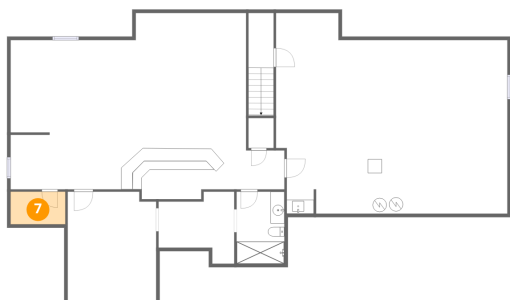
### 6 Floor 1 - Foyer



Dimensions: 3'7" x 7'10"  
Area: 53 sq. ft  
Counted as living area: Yes

Heated: Yes  
Finished: Yes  
Enclosed: Yes  
Contiguous: Yes  
Permitted: Yes  
Wet space: No  
Addition: No  
Conversion: No

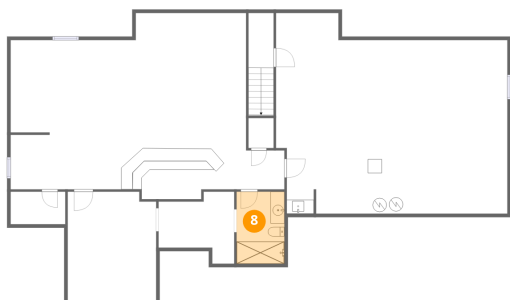
### 7 Floor 1 - Sauna



Dimensions: 7'10" x 4'8"  
Area: 36 sq. ft  
Counted as living area: Yes

Heated: Yes  
Finished: Yes  
Enclosed: Yes  
Contiguous: Yes  
Permitted: Yes  
Wet space: No  
Addition: No  
Conversion: No

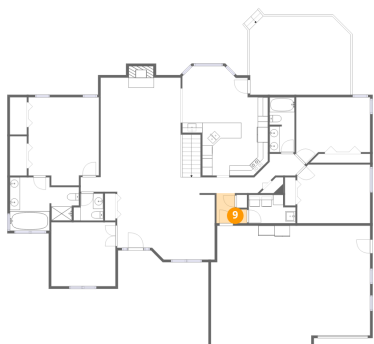
### 8 Floor 1 - Bath



Dimensions: 6'10" x 10'4"  
Area: 71 sq. ft  
Counted as living area: Yes

Heated: Yes  
Finished: Yes  
Enclosed: Yes  
Contiguous: Yes  
Permitted: Yes  
Wet space: Yes  
Addition: No  
Conversion: No

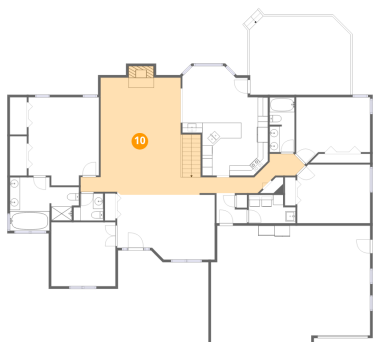
### 9 Floor 2 - Hall



Dimensions: 6'0" x 5'11"  
Area: 28 sq. ft  
Counted as living area: Yes

Heated: Yes  
Finished: Yes  
Enclosed: Yes  
Contiguous: Yes  
Permitted: Yes  
Wet space: No  
Addition: No  
Conversion: No

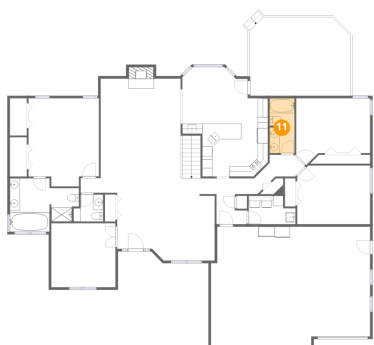
### 10 Floor 2 - Living Room



Dimensions: 38'1" x 25'4"  
Area: 503 sq. ft  
Counted as living area: Yes

Heated: Yes  
Finished: Yes  
Enclosed: Yes  
Contiguous: Yes  
Permitted: Yes  
Wet space: No  
Addition: No  
Conversion: No

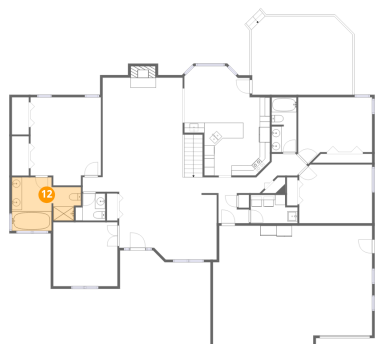
### 11 Floor 2 - Bath



Dimensions: 4'11" x 10'10"  
Area: 52 sq. ft  
Counted as living area: Yes

Heated: Yes  
Finished: Yes  
Enclosed: Yes  
Contiguous: Yes  
Permitted: Yes  
Wet space: Yes  
Addition: No  
Conversion: No

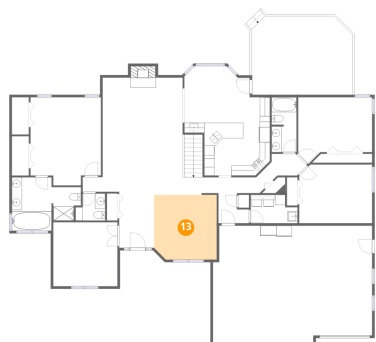
## 12 Floor 2 - Primary Bath



Dimensions: 13'8" x 10'7"  
Area: 116 sq. ft  
Counted as living area: Yes

Heated: Yes  
Finished: Yes  
Enclosed: Yes  
Contiguous: Yes  
Permitted: Yes  
Wet space: Yes  
Addition: No  
Conversion: No

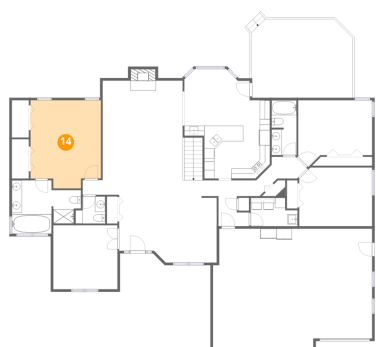
## 13 Floor 2 - Dining Area



Dimensions: 12'4" x 12'9"  
Area: 155 sq. ft  
Counted as living area: Yes

Heated: Yes  
Finished: Yes  
Enclosed: Yes  
Contiguous: Yes  
Permitted: Yes  
Wet space: No  
Addition: No  
Conversion: No

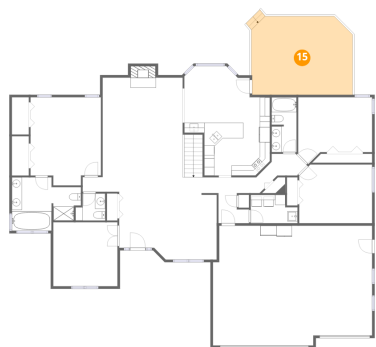
## 14 Floor 2 - Primary Bedroom



Dimensions: 13'11" x 17'4"  
Area: 225 sq. ft  
Counted as living area: Yes

Heated: Yes  
Finished: Yes  
Enclosed: Yes  
Contiguous: Yes  
Permitted: Yes  
Wet space: No  
Addition: No  
Conversion: No

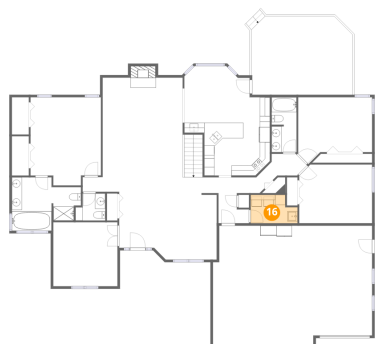
### 15 Floor 2 - Deck



Dimensions: 20'0" x 15'6"  
Area: 305 sq. ft  
Counted as living area: No

Heated: No  
Finished: No  
Enclosed: No  
Contiguous: Yes  
Permitted: Yes  
Wet space: No  
Addition: No  
Conversion: No

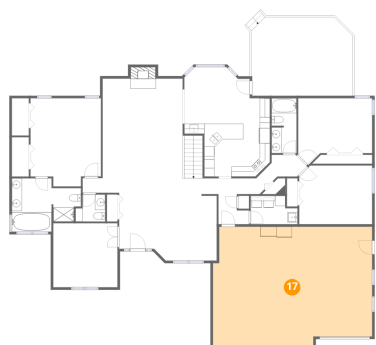
### 16 Floor 2 - Laundry



Dimensions: 9'3" x 5'7"  
Area: 46 sq. ft  
Counted as living area: Yes

Heated: Yes  
Finished: Yes  
Enclosed: Yes  
Contiguous: Yes  
Permitted: Yes  
Wet space: No  
Addition: No  
Conversion: No

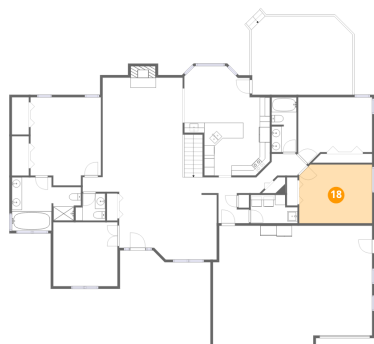
### 17 Floor 2 - Garage



Dimensions: 31'5" x 23'7"  
Area: 710 sq. ft  
Counted as living area: No

Heated: No  
Finished: No  
Enclosed: Yes  
Contiguous: Yes  
Permitted: Yes  
Wet space: No  
Addition: No  
Conversion: No

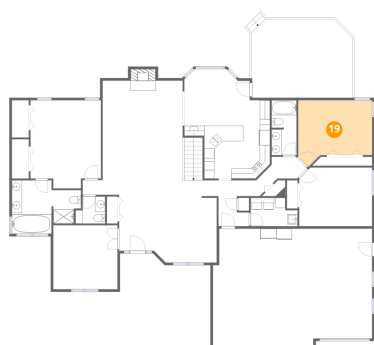
**18** Floor 2 - Bedroom



Dimensions: 14'5" x 11'7"  
Area: 164 sq. ft  
Counted as living area: Yes

Heated: Yes  
Finished: Yes  
Enclosed: Yes  
Contiguous: Yes  
Permitted: Yes  
Wet space: No  
Addition: No  
Conversion: No

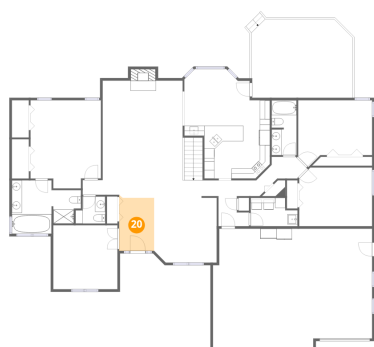
**19** Floor 2 - Bedroom



Dimensions: 14'7" x 13'2"  
Area: 163 sq. ft  
Counted as living area: Yes

Heated: Yes  
Finished: Yes  
Enclosed: Yes  
Contiguous: Yes  
Permitted: Yes  
Wet space: No  
Addition: No  
Conversion: No

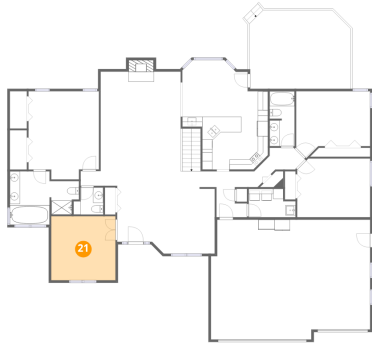
**20** Floor 2 - Foyer



Dimensions: 6'10" x 10'11"  
Area: 72 sq. ft  
Counted as living area: Yes

Heated: Yes  
Finished: Yes  
Enclosed: Yes  
Contiguous: Yes  
Permitted: Yes  
Wet space: No  
Addition: No  
Conversion: No

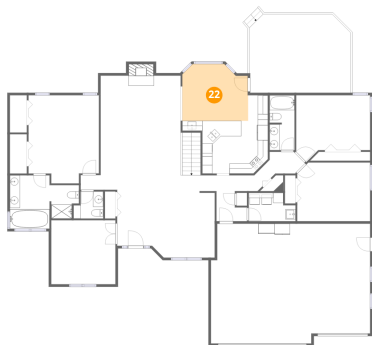
## 21 Floor 2 - Office



Dimensions: 12'8" x 12'8"  
Area: 160 sq. ft  
Counted as living area: Yes

Heated: Yes  
Finished: Yes  
Enclosed: Yes  
Contiguous: Yes  
Permitted: Yes  
Wet space: No  
Addition: No  
Conversion: No

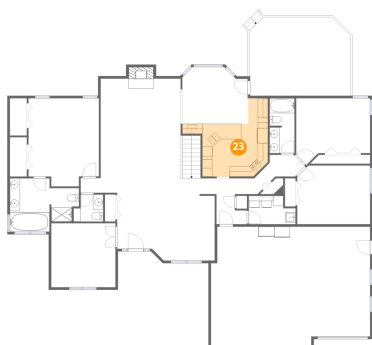
## 22 Floor 2 - Breakfast Nook



Dimensions: 13'0" x 11'2"  
Area: 135 sq. ft  
Counted as living area: Yes

Heated: Yes  
Finished: Yes  
Enclosed: Yes  
Contiguous: Yes  
Permitted: Yes  
Wet space: No  
Addition: No  
Conversion: No

## 23 Floor 2 - Kitchen

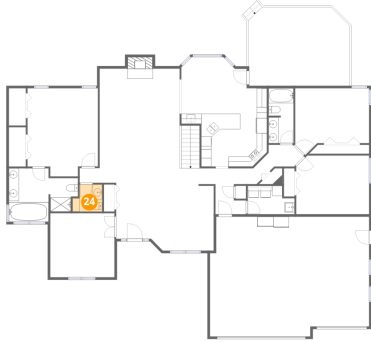


Dimensions: 16'11" x 15'5"  
Area: 158 sq. ft  
Counted as living area: Yes

Heated: Yes  
Finished: Yes  
Enclosed: Yes  
Contiguous: Yes  
Permitted: Yes  
Wet space: No  
Addition: No  
Conversion: No

**24** Floor 2 - Bath

---



**Dimensions:** 5'10" x 5'4"  
**Area:** 27 sq. ft  
**Counted as living area:** Yes

**Heated:** Yes  
**Finished:** Yes  
**Enclosed:** Yes  
**Contiguous:** Yes  
**Permitted:** Yes  
**Wet space:** Yes  
**Addition:** No  
**Conversion:** No