

Home data report

5935 Hammersmith Rd SW, Stone Mountain, GA, US




Total Area: 5009 sq. ft

Basement: 2073 sq. ft, 1st Floor: 2936 sq. ft, 2nd Floor: 0 sq. ft

Excluded: Utility 137 sq. ft, Patio 424 sq. ft, Fireplace 35 sq. ft, Storage 70 sq. ft, Porch 182 sq. ft, Deck 466 sq. ft, Attic 1135 sq. ft, Walls: 360 sq. ft

Property summary

 **3** Floors

 **4** Bedrooms

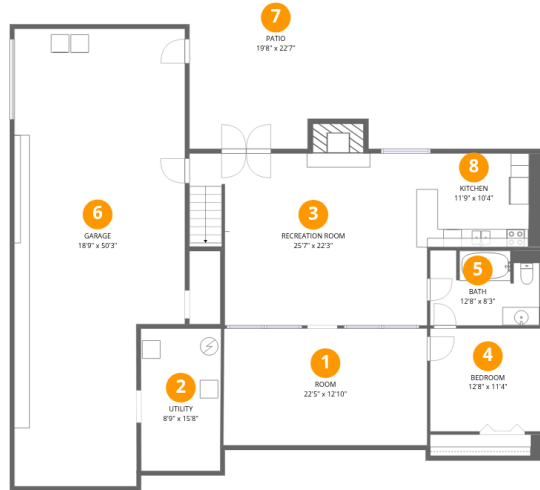
 **3** Bathrooms

Home data report

5935 Hammersmith Rd SW, Stone Mountain, GA, US

 **1**
Half baths

 **2**
Garages



Room dimensions

Floor 1 Below grade

Total:2073sqft

Excluded: 583sqft

#		Dimensions	sqft	Counted as living area
1	Room	22'5" x 12'10"	288 sq. ft	Yes
2	Utility	8'9" x 15'8"	137 sq. ft	No
3	Recreation Room	25'7" x 22'3"	472 sq. ft	Yes
4	Bedroom	12'8" x 11'4"	144 sq. ft	Yes
5	Bath	12'8" x 8'3"	103 sq. ft	Yes
6	Garage	18'9" x 50'3"	849 sq. ft	Yes
7	Patio	19'8" x 22'7"	424 sq. ft	No
8	Kitchen	11'9" x 10'4"	140 sq. ft	Yes



Room dimensions

Floor 2

Total: 2936 sqft

Excluded: 731 sqft

#		Dimensions	sqft	Counted as living area
9	Deck	19'0" x 27'4"	466 sq. ft	No
10	Storage	5'10" x 12'0"	70 sq. ft	No
11	Garage	22'9" x 21'1"	480 sq. ft	Yes
12	Living Room	20'9" x 21'8"	396 sq. ft	Yes
13	Primary Bedroom	18'11" x 15'2"	287 sq. ft	Yes
14	Porch	28'4" x 8'11"	181 sq. ft	No
15	W.I.C.	6'10" x 5'5"	37 sq. ft	Yes
16	Laundry	8'3" x 12'0"	99 sq. ft	Yes
17	W.I.C.	7'0" x 4'9"	33 sq. ft	Yes
18	Hall	8'2" x 6'5"	41 sq. ft	Yes
19	Bedroom	13'6" x 15'9"	212 sq. ft	Yes

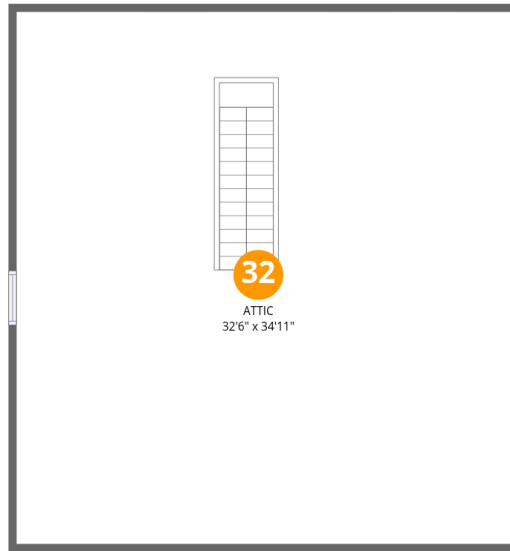
Home data report

5935 Hammersmith Rd SW, Stone Mountain, GA, US

#		Dimensions	sqft	Counted as living area
20	Primary Bath	18'11" x 12'10"	150 sq. ft	Yes
21	Foyer	6'6" x 11'1"	72 sq. ft	Yes
22	Hall	3'7" x 15'2"	54 sq. ft	Yes
23	Bath	8'10" x 10'1"	88 sq. ft	Yes
24	Bath	5'5" x 4'3"	31 sq. ft	Yes
25	Dining Room	14'8" x 15'6"	216 sq. ft	Yes
26	W.I.C.	5'11" x 4'7"	27 sq. ft	Yes
27	Hall	26'4" x 5'5"	88 sq. ft	Yes
28	Bedroom	12'3" x 13'4"	163 sq. ft	Yes
29	Breakfast Nook	15'9" x 11'5"	144 sq. ft	Yes
30	Bath	6'7" x 3'2"	21 sq. ft	Yes
31	Kitchen	13'3" x 11'1"	146 sq. ft	Yes

Home data report

5935 Hammersmith Rd SW, Stone Mountain, GA, US



Room dimensions

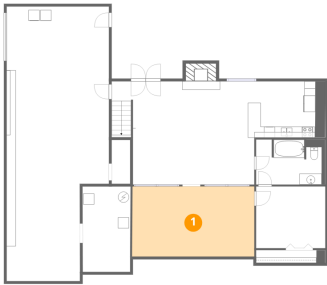
Floor 3

Total: 0sqft

Excluded: 1135sqft

#		Dimensions	sqft	Counted as living area
32	Attic	32'6" x 34'11"	1135 sq. ft	No

1 Floor 1 - Room



Dimensions: 22'5" x 12'10"
Area: 288 sq. ft
Counted as living area: Yes

Heated: Yes
Finished: Yes
Enclosed: Yes
Contiguous: Yes
Permitted: Yes
Wet space: No
Addition: No
Conversion: No

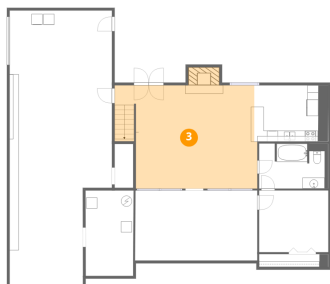
2 Floor 1 - Utility



Dimensions: 8'9" x 15'8"
Area: 137 sq. ft
Counted as living area: No

Heated: Yes
Finished: No
Enclosed: Yes
Contiguous: Yes
Permitted: Yes
Wet space: No
Addition: No
Conversion: No

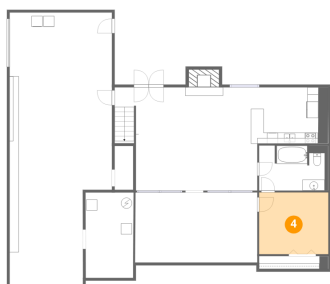
3 Floor 1 - Recreation Room



Dimensions: 25'7" x 22'3"
Area: 472 sq. ft
Counted as living area: Yes

Heated: Yes
Finished: Yes
Enclosed: Yes
Contiguous: Yes
Permitted: Yes
Wet space: No
Addition: No
Conversion: No

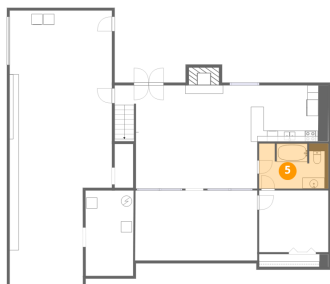
4 Floor 1 - Bedroom



Dimensions: 12'8" x 11'4"
Area: 144 sq. ft
Counted as living area: Yes

Heated: Yes
Finished: Yes
Enclosed: Yes
Contiguous: Yes
Permitted: Yes
Wet space: No
Addition: No
Conversion: No

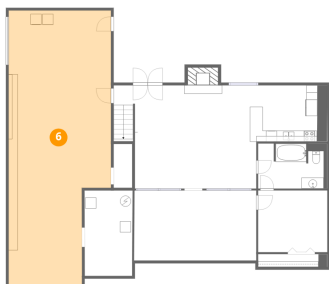
5 Floor 1 - Bath



Dimensions: 12'8" x 8'3"
Area: 103 sq. ft
Counted as living area: Yes

Heated: Yes
Finished: Yes
Enclosed: Yes
Contiguous: Yes
Permitted: Yes
Wet space: Yes
Addition: No
Conversion: No

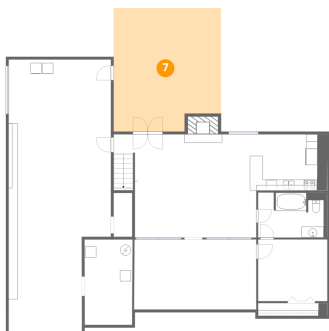
6 Floor 1 - Garage



Dimensions: 18'9" x 50'3"
Area: 849 sq. ft
Counted as living area: No

Heated: No
Finished: Yes
Enclosed: Yes
Contiguous: Yes
Permitted: Yes
Wet space: No
Addition: No
Conversion: No

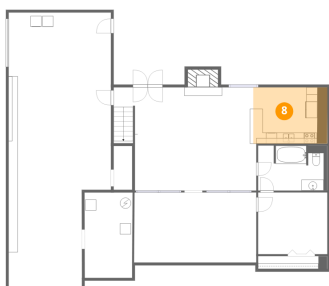
7 Floor 1 - Patio



Dimensions: 19'8" x 22'7"
Area: 424 sq. ft
Counted as living area: No

Heated: No
Finished: No
Enclosed: No
Contiguous: Yes
Permitted: Yes
Wet space: No
Addition: No
Conversion: No

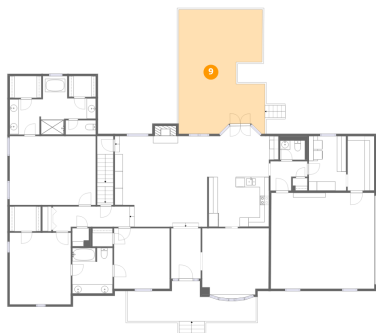
8 Floor 1 - Kitchen



Dimensions: 11'9" x 10'4"
Area: 140 sq. ft
Counted as living area: Yes

Heated: Yes
Finished: Yes
Enclosed: Yes
Contiguous: Yes
Permitted: Yes
Wet space: No
Addition: No
Conversion: No

9 Floor 2 - Deck



Dimensions: 19'0" x 27'4"
Area: 466 sq. ft
Counted as living area: No

Heated: No
Finished: No
Enclosed: No
Contiguous: Yes
Permitted: Yes
Wet space: No
Addition: No
Conversion: No

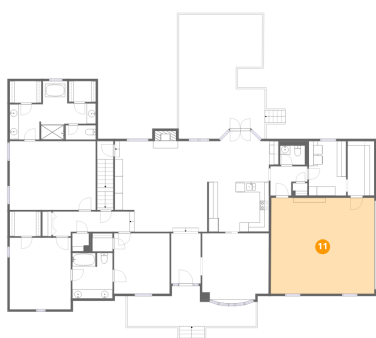
10 Floor 2 - Storage



Dimensions: 5'10" x 12'0"
Area: 70 sq. ft
Counted as living area: No

Heated: No
Finished: No
Enclosed: No
Contiguous: Yes
Permitted: Yes
Wet space: No
Addition: No
Conversion: No

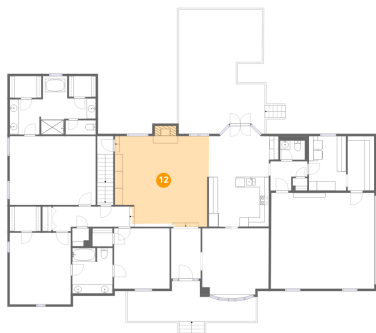
11 Floor 2 - Garage



Dimensions: 22'9" x 21'1"
Area: 480 sq. ft
Counted as living area: No

Heated: No
Finished: Yes
Enclosed: Yes
Contiguous: Yes
Permitted: Yes
Wet space: No
Addition: No
Conversion: No

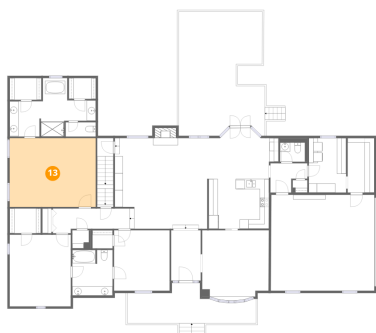
12 Floor 2 - Living Room



Dimensions: 20'9" x 21'8"
Area: 396 sq. ft
Counted as living area: Yes

Heated: Yes
Finished: Yes
Enclosed: Yes
Contiguous: Yes
Permitted: Yes
Wet space: No
Addition: No
Conversion: No

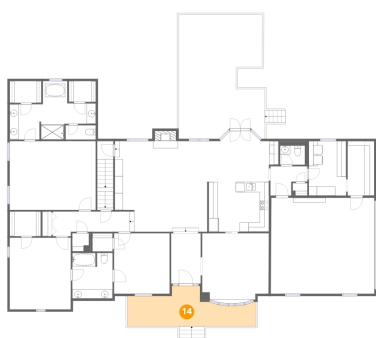
13 Floor 2 - Primary Bedroom



Dimensions: 18'11" x 15'2"
Area: 287 sq. ft
Counted as living area: Yes

Heated: Yes
Finished: Yes
Enclosed: Yes
Contiguous: Yes
Permitted: Yes
Wet space: No
Addition: No
Conversion: No

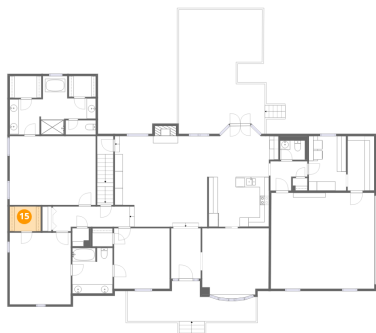
14 Floor 2 - Porch



Dimensions: 28'4" x 8'11"
Area: 181 sq. ft
Counted as living area: No

Heated: No
Finished: No
Enclosed: No
Contiguous: Yes
Permitted: Yes
Wet space: No
Addition: No
Conversion: No

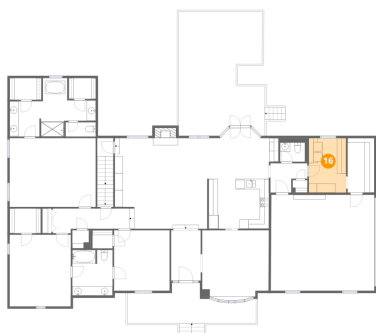
15 Floor 2 - W.I.C.



Dimensions: 6'10" x 5'5"
Area: 37 sq. ft
Counted as living area: Yes

Heated: Yes
Finished: Yes
Enclosed: Yes
Contiguous: Yes
Permitted: Yes
Wet space: No
Addition: No
Conversion: No

16 Floor 2 - Laundry



Dimensions: 8'3" x 12'0"
Area: 99 sq. ft
Counted as living area: Yes

Heated: Yes
Finished: Yes
Enclosed: Yes
Contiguous: Yes
Permitted: Yes
Wet space: No
Addition: No
Conversion: No

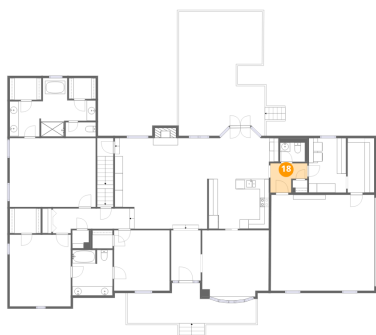
17 Floor 2 - W.I.C.



Dimensions: 7'0" x 4'9"
Area: 33 sq. ft
Counted as living area: Yes

Heated: Yes
Finished: Yes
Enclosed: Yes
Contiguous: Yes
Permitted: Yes
Wet space: No
Addition: No
Conversion: No

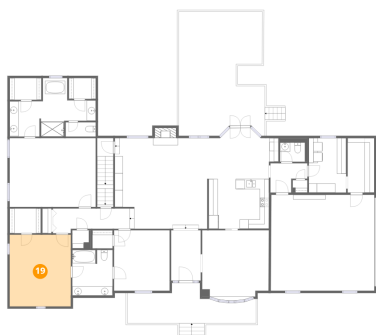
18 Floor 2 - Hall



Dimensions: 8'2" x 6'5"
Area: 41 sq. ft
Counted as living area: Yes

Heated: Yes
Finished: Yes
Enclosed: Yes
Contiguous: Yes
Permitted: Yes
Wet space: No
Addition: No
Conversion: No

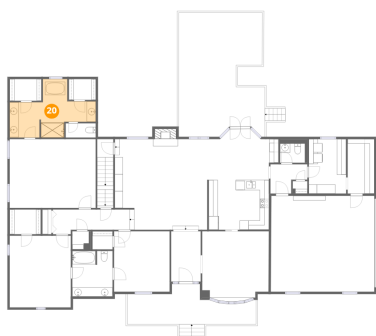
19 Floor 2 - Bedroom



Dimensions: 13'6" x 15'9"
Area: 212 sq. ft
Counted as living area: Yes

Heated: Yes
Finished: Yes
Enclosed: Yes
Contiguous: Yes
Permitted: Yes
Wet space: No
Addition: No
Conversion: No

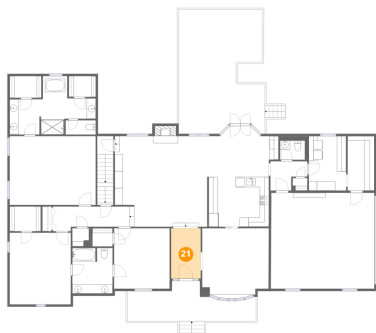
20 Floor 2 - Primary Bath



Dimensions: 18'11" x 12'10"
Area: 150 sq. ft
Counted as living area: Yes

Heated: Yes
Finished: Yes
Enclosed: Yes
Contiguous: Yes
Permitted: Yes
Wet space: Yes
Addition: No
Conversion: No

21 Floor 2 - Foyer



Dimensions: 6'6" x 11'1"
Area: 72 sq. ft
Counted as living area: Yes

Heated: Yes
Finished: Yes
Enclosed: Yes
Contiguous: Yes
Permitted: Yes
Wet space: No
Addition: No
Conversion: No

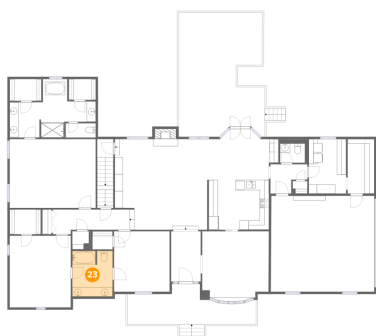
22 Floor 2 - Hall



Dimensions: 3'7" x 15'2"
Area: 54 sq. ft
Counted as living area: Yes

Heated: Yes
Finished: Yes
Enclosed: Yes
Contiguous: Yes
Permitted: Yes
Wet space: No
Addition: No
Conversion: No

23 Floor 2 - Bath



Dimensions: 8'10" x 10'1"
Area: 88 sq. ft
Counted as living area: Yes

Heated: Yes
Finished: Yes
Enclosed: Yes
Contiguous: Yes
Permitted: Yes
Wet space: Yes
Addition: No
Conversion: No

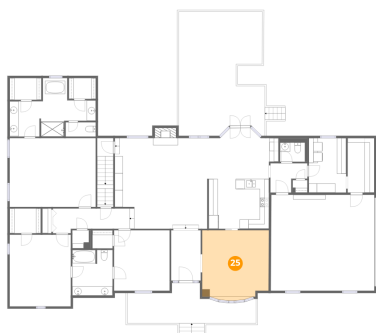
24 Floor 2 - Bath



Dimensions: 5'5" x 4'3"
Area: 31 sq. ft
Counted as living area: Yes

Heated: Yes
Finished: Yes
Enclosed: Yes
Contiguous: Yes
Permitted: Yes
Wet space: Yes
Addition: No
Conversion: No

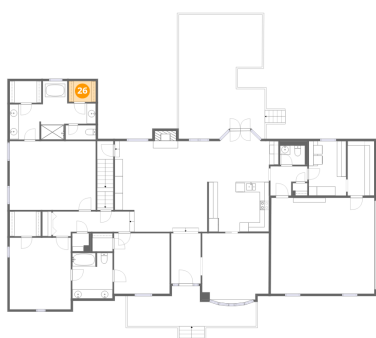
25 Floor 2 - Dining Room



Dimensions: 14'8" x 15'6"
Area: 216 sq. ft
Counted as living area: Yes

Heated: Yes
Finished: Yes
Enclosed: Yes
Contiguous: Yes
Permitted: Yes
Wet space: No
Addition: No
Conversion: No

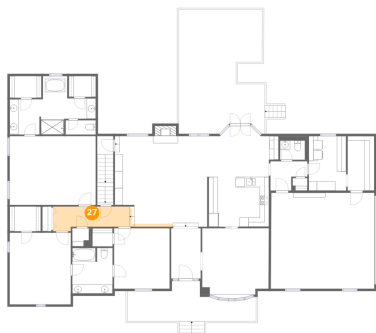
26 Floor 2 - W.I.C.



Dimensions: 5'11" x 4'7"
Area: 27 sq. ft
Counted as living area: Yes

Heated: Yes
Finished: Yes
Enclosed: Yes
Contiguous: Yes
Permitted: Yes
Wet space: No
Addition: No
Conversion: No

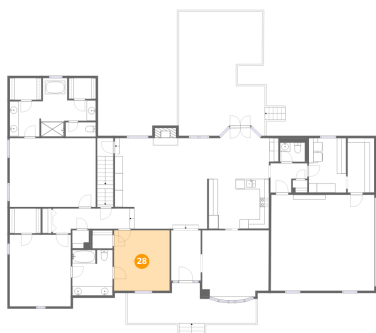
27 Floor 2 - Hall



Dimensions: 26'4" x 5'5"
Area: 88 sq. ft
Counted as living area: Yes

Heated: Yes
Finished: Yes
Enclosed: Yes
Contiguous: Yes
Permitted: Yes
Wet space: No
Addition: No
Conversion: No

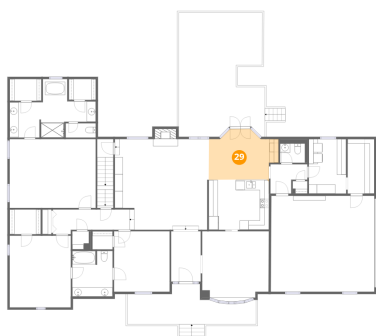
28 Floor 2 - Bedroom



Dimensions: 12'3" x 13'4"
Area: 163 sq. ft
Counted as living area: Yes

Heated: Yes
Finished: Yes
Enclosed: Yes
Contiguous: Yes
Permitted: Yes
Wet space: No
Addition: No
Conversion: No

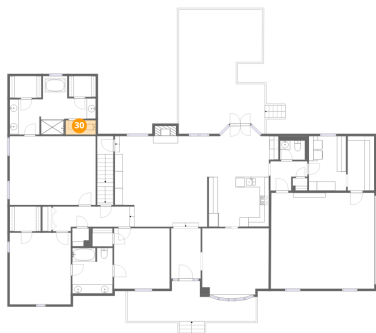
29 Floor 2 - Breakfast Nook



Dimensions: 15'9" x 11'5"
Area: 144 sq. ft
Counted as living area: Yes

Heated: Yes
Finished: Yes
Enclosed: Yes
Contiguous: Yes
Permitted: Yes
Wet space: No
Addition: No
Conversion: No

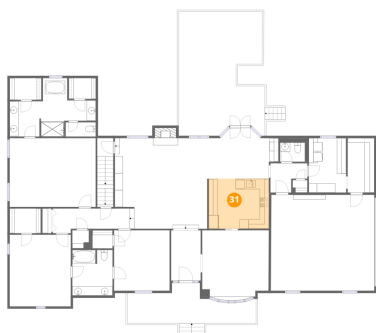
30 Floor 2 - Bath



Dimensions: 6'7" x 3'2"
Area: 21 sq. ft
Counted as living area: Yes

Heated: Yes
Finished: Yes
Enclosed: Yes
Contiguous: Yes
Permitted: Yes
Wet space: Yes
Addition: No
Conversion: No

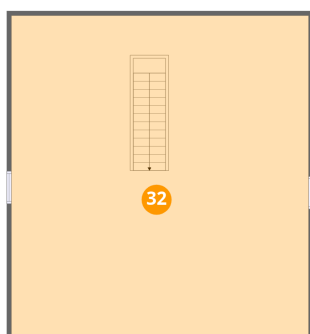
31 Floor 2 - Kitchen



Dimensions: 13'3" x 11'1"
Area: 146 sq. ft
Counted as living area: Yes

Heated: Yes
Finished: Yes
Enclosed: Yes
Contiguous: Yes
Permitted: Yes
Wet space: No
Addition: No
Conversion: No

32 Floor 3 - Attic



Dimensions: 32'6" x 34'11"
Area: 1135 sq. ft
Counted as living area: No

Heated: No
Finished: No
Enclosed: Yes
Contiguous: Yes
Permitted: Yes
Wet space: No
Addition: No
Conversion: No