

Home data report

130 Skookum Ln,Crescent City,CA,US




Total Area: 1776 sq. ft

1st Floor: 1776 sq. ft


Excluded: Garage 481 sq. ft, Covered patio 155 sq. ft, Porch 154 sq. ft, Walls: 130 sq. ft

Property summary

 **1** Floors

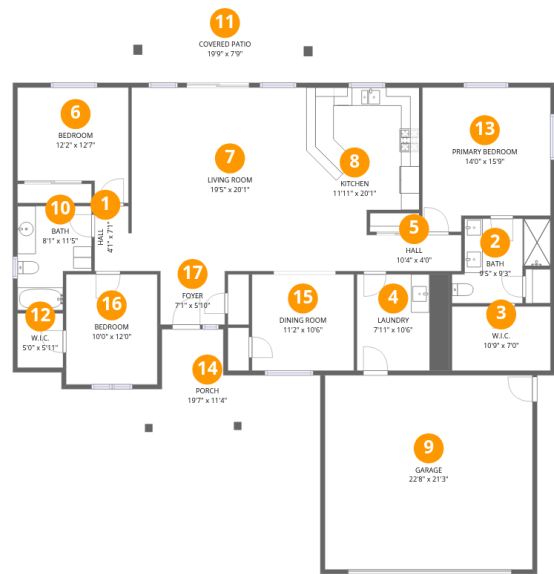
 **3** Bedrooms

 **2** Bathrooms

 **1** Garages

Home data report

130 Skookum Ln,Crescent City,CA,US



Room dimensions

Floor 1 Total:1776sqft Excluded: 790sqft

#		Dimensions	sqft	Counted as living area
1	Hall	4'1" x 7'1"	29 sq. ft	Yes
2	Bath	9'5" x 9'3"	87 sq. ft	Yes
3	W.I.C.	10'9" x 7'0"	76 sq. ft	Yes
4	Laundry	7'11" x 10'6"	83 sq. ft	Yes
5	Hall	10'4" x 4'0"	41 sq. ft	Yes
6	Bedroom	12'2" x 12'7"	153 sq. ft	Yes
7	Living Room	19'5" x 20'1"	390 sq. ft	Yes
8	Kitchen	11'11" x 20'1"	240 sq. ft	Yes
9	Garage	22'8" x 21'3"	481 sq. ft	No
10	Bath	8'1" x 11'5"	92 sq. ft	Yes
11	Covered Patio	19'9" x 7'9"	153 sq. ft	No

Home data report

130 Skookum Ln,Crescent City,CA,US

#		Dimensions	sqft	Counted as living area
12	W.I.C.	5'0" x 5'11"	30 sq. ft	Yes
13	Primary Bedroom	14'0" x 15'9"	221 sq. ft	Yes
14	Porch	19'7" x 11'4"	222 sq. ft	No
15	Dining Room	11'2" x 10'6"	117 sq. ft	Yes
16	Bedroom	10'0" x 12'0"	120 sq. ft	Yes
17	Foyer	7'1" x 5'10"	41 sq. ft	Yes

1 Floor 1 - Hall



Dimensions: 4'1" x 7'1"
Area: 29 sq. ft
Counted as living area: Yes

Heated: Yes
Finished: Yes
Enclosed: Yes
Contiguous: Yes
Permitted: Yes
Wet space: No
Addition: No
Conversion: No

2 Floor 1 - Bath



Dimensions: 9'5" x 9'3"
Area: 87 sq. ft
Counted as living area: Yes

Heated: Yes
Finished: Yes
Enclosed: Yes
Contiguous: Yes
Permitted: Yes
Wet space: Yes
Addition: No
Conversion: No

3 Floor 1 - W.I.C.



Dimensions: 10'9" x 7'0"
Area: 76 sq. ft
Counted as living area: Yes

Heated: Yes
Finished: Yes
Enclosed: Yes
Contiguous: Yes
Permitted: Yes
Wet space: No
Addition: No
Conversion: No

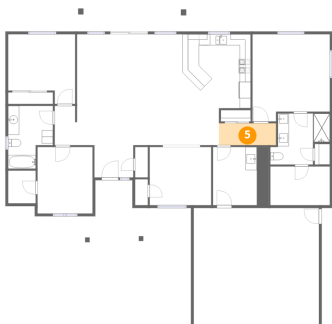
4 Floor 1 - Laundry



Dimensions: 7'11" x 10'6"
Area: 83 sq. ft
Counted as living area: Yes

Heated: Yes
Finished: Yes
Enclosed: Yes
Contiguous: Yes
Permitted: Yes
Wet space: No
Addition: No
Conversion: No

5 Floor 1 - Hall



Dimensions: 10'4" x 4'0"
Area: 41 sq. ft
Counted as living area: Yes

Heated: Yes
Finished: Yes
Enclosed: Yes
Contiguous: Yes
Permitted: Yes
Wet space: No
Addition: No
Conversion: No

6 Floor 1 - Bedroom



Dimensions: 12'2" x 12'7"
Area: 153 sq. ft
Counted as living area: Yes

Heated: Yes
Finished: Yes
Enclosed: Yes
Contiguous: Yes
Permitted: Yes
Wet space: No
Addition: No
Conversion: No

7 Floor 1 - Living Room



Dimensions: 19'5" x 20'1"
Area: 390 sq. ft
Counted as living area: Yes

Heated: Yes
Finished: Yes
Enclosed: Yes
Contiguous: Yes
Permitted: Yes
Wet space: No
Addition: No
Conversion: No

8 Floor 1 - Kitchen



Dimensions: 11'11" x 20'1"
Area: 240 sq. ft
Counted as living area: Yes

Heated: Yes
Finished: Yes
Enclosed: Yes
Contiguous: Yes
Permitted: Yes
Wet space: No
Addition: No
Conversion: No

9 Floor 1 - Garage



Dimensions: 22'8" x 21'3"
Area: 481 sq. ft
Counted as living area: No

Heated: No
Finished: No
Enclosed: Yes
Contiguous: Yes
Permitted: Yes
Wet space: No
Addition: No
Conversion: No

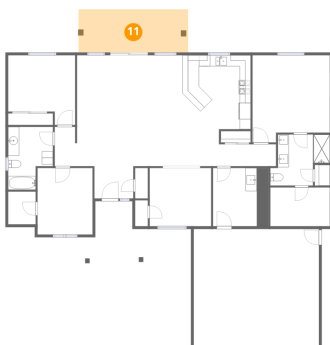
10 Floor 1 - Bath



Dimensions: 8'1" x 11'5"
Area: 92 sq. ft
Counted as living area: Yes

Heated: Yes
Finished: Yes
Enclosed: Yes
Contiguous: Yes
Permitted: Yes
Wet space: Yes
Addition: No
Conversion: No

11 Floor 1 - Covered Patio



Dimensions: 19'9" x 7'9"
Area: 153 sq. ft
Counted as living area: No

Heated: No
Finished: No
Enclosed: No
Contiguous: Yes
Permitted: Yes
Wet space: No
Addition: No
Conversion: No

12 Floor 1 - W.I.C.



Dimensions: 5'0" x 5'11"
Area: 30 sq. ft
Counted as living area: Yes

Heated: Yes
Finished: Yes
Enclosed: Yes
Contiguous: Yes
Permitted: Yes
Wet space: No
Addition: No
Conversion: No

13 Floor 1 - Primary Bedroom



Dimensions: 14'0" x 15'9"
Area: 221 sq. ft
Counted as living area: Yes

Heated: Yes
Finished: Yes
Enclosed: Yes
Contiguous: Yes
Permitted: Yes
Wet space: No
Addition: No
Conversion: No

14 Floor 1 - Porch



Dimensions: 19'7" x 11'4"
Area: 222 sq. ft
Counted as living area: No

Heated: No
Finished: No
Enclosed: No
Contiguous: Yes
Permitted: Yes
Wet space: No
Addition: No
Conversion: No

15 Floor 1 - Dining Room



Dimensions: 11'2" x 10'6"
Area: 117 sq. ft
Counted as living area: Yes

Heated: Yes
Finished: Yes
Enclosed: Yes
Contiguous: Yes
Permitted: Yes
Wet space: No
Addition: No
Conversion: No

16 Floor 1 - Bedroom



Dimensions: 10'0" x 12'0"
Area: 120 sq. ft
Counted as living area: Yes

Heated: Yes
Finished: Yes
Enclosed: Yes
Contiguous: Yes
Permitted: Yes
Wet space: No
Addition: No
Conversion: No

17 Floor 1 - Foyer



Dimensions: 7'1" x 5'10"
Area: 41 sq. ft
Counted as living area: Yes

Heated: Yes
Finished: Yes
Enclosed: Yes
Contiguous: Yes
Permitted: Yes
Wet space: No
Addition: No
Conversion: No