

# Home data report

## 9064 Ruggles Rd, Baroda, MI, US



**Total Area: 1925 sq. ft**

Basement: 0 sq. ft, 1st Floor: 0 sq. ft, 2nd Floor: 1161 sq. ft, 3rd Floor: 764 sq. ft

Excluded: Basement 587 sq. ft, Pole barn 1774 sq. ft, Patio 198 sq. ft, Porch 122 sq. ft, Deck 262 sq. ft, Balcony 92 sq. ft, Walls: 335 sq. ft

### Property summary

 **4** Floors

 **3** Bedrooms

 **2** Bathrooms

Home data report

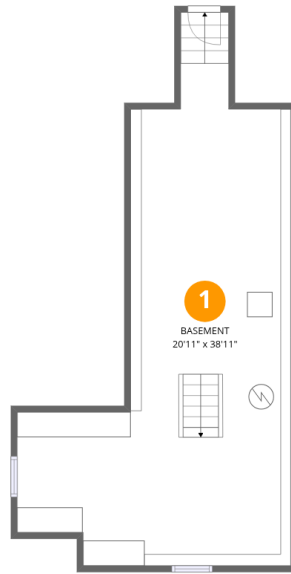
# 9064 Ruggles Rd, Baroda, MI, US

 **1**  
Half baths

 **2**  
Garages

Home data report

9064 Ruggles Rd,Baroda,MI,US



## Room dimensions

Floor 1 Below grade

Total:0sqft

Excluded: 587sqft

#		Dimensions	sqft	Counted as living area
1	Basement	20'11" x 38'11"	587 sq. ft	No



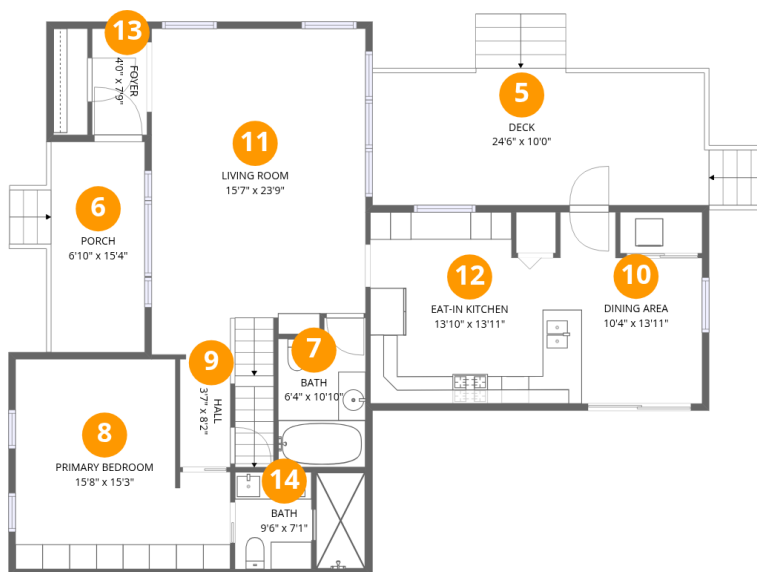
## Room dimensions

Floor 2

Total:0sqft

Excluded: 1972sqft

#		Dimensions	sqft	Counted as living area
2	Patio	21'4" x 10'8"	198 sq. ft	No
3	Pole Barn	15'4" x 30'4"	464 sq. ft	No
4	Pole Barn	43'3" x 30'4"	1310 sq. ft	No

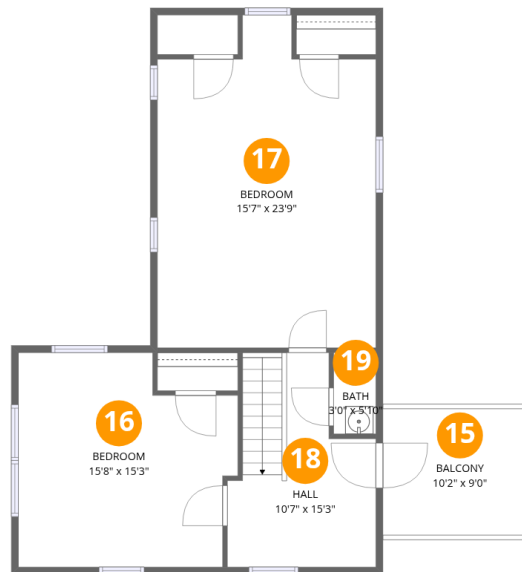


## Room dimensions

Floor 3

Total: 1161 sqft Excluded: 384 sqft

#		Dimensions	sqft	Counted as living area
5	Deck	24'6" x 10'0"	262 sq. ft	No
6	Porch	6'10" x 15'4"	122 sq. ft	No
7	Bath	6'4" x 10'10"	64 sq. ft	Yes
8	Primary Bedroom	15'8" x 15'3"	206 sq. ft	Yes
9	Hall	3'7" x 8'2"	54 sq. ft	Yes
10	Dining Area	10'4" x 13'11"	123 sq. ft	Yes
11	Living Room	15'7" x 23'9"	354 sq. ft	Yes
12	Eat-in Kitchen	13'10" x 13'11"	181 sq. ft	Yes
13	Foyer	4'0" x 7'9"	31 sq. ft	Yes
14	Bath	9'6" x 7'1"	66 sq. ft	Yes



## Room dimensions

Floor 4

Total:764sqft Excluded: 92sqft

#		Dimensions	sqft	Counted as living area
15	Balcony	10'2" x 9'0"	92 sq. ft	No
16	Bedroom	15'8" x 15'3"	213 sq. ft	Yes
17	Bedroom	15'7" x 23'9"	331 sq. ft	Yes
18	Hall	10'7" x 15'3"	131 sq. ft	Yes
19	Bath	3'0" x 5'10"	17 sq. ft	Yes

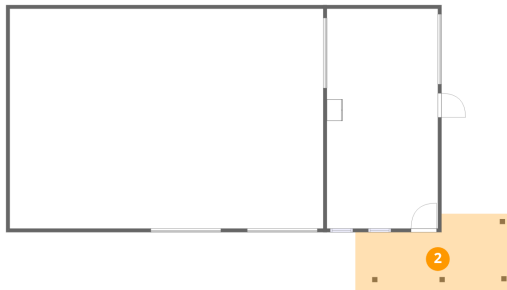
## 1 Floor 1 - Basement



Dimensions: 20'11" x 38'11"  
Area: 587 sq. ft  
Counted as living area: No

Heated: Yes  
Finished: No  
Enclosed: Yes  
Contiguous: Yes  
Permitted: Yes  
Wet space: No  
Addition: No  
Conversion: No

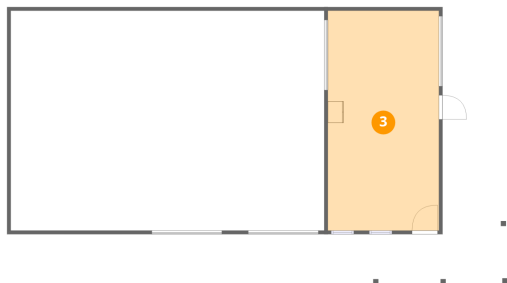
## 2 Floor 2 - Patio



Dimensions: 21'4" x 10'8"  
Area: 198 sq. ft  
Counted as living area: No

Heated: No  
Finished: No  
Enclosed: No  
Contiguous: Yes  
Permitted: Yes  
Wet space: No  
Addition: No  
Conversion: No

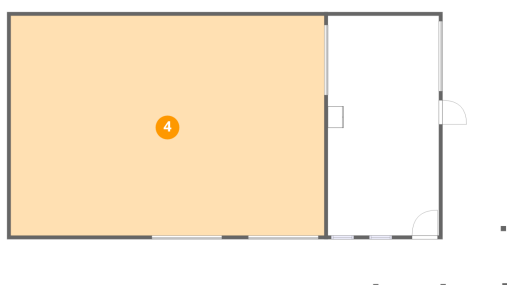
### 3 Floor 2 - Pole Barn



Dimensions: 15'4" x 30'4"  
Area: 464 sq. ft  
Counted as living area: No

Heated: No  
Finished: No  
Enclosed: Yes  
Contiguous: Yes  
Permitted: Yes  
Wet space: No  
Addition: No  
Conversion: No

### 4 Floor 2 - Pole Barn



Dimensions: 43'3" x 30'4"  
Area: 1310 sq. ft  
Counted as living area: No

Heated: No  
Finished: No  
Enclosed: Yes  
Contiguous: Yes  
Permitted: Yes  
Wet space: No  
Addition: No  
Conversion: No

### 5 Floor 3 - Deck



Dimensions: 24'6" x 10'0"  
Area: 262 sq. ft  
Counted as living area: No

Heated: No  
Finished: No  
Enclosed: No  
Contiguous: Yes  
Permitted: Yes  
Wet space: No  
Addition: No  
Conversion: No

### 6 Floor 3 - Porch



Dimensions: 6'10" x 15'4"  
Area: 122 sq. ft  
Counted as living area: No

Heated: No  
Finished: No  
Enclosed: No  
Contiguous: Yes  
Permitted: Yes  
Wet space: No  
Addition: No  
Conversion: No

### 7 Floor 3 - Bath



Dimensions: 6'4" x 10'10"  
Area: 64 sq. ft  
Counted as living area: Yes

Heated: Yes  
Finished: Yes  
Enclosed: Yes  
Contiguous: Yes  
Permitted: Yes  
Wet space: Yes  
Addition: No  
Conversion: No

### 8 Floor 3 - Primary Bedroom



Dimensions: 15'8" x 15'3"  
Area: 206 sq. ft  
Counted as living area: Yes

Heated: Yes  
Finished: Yes  
Enclosed: Yes  
Contiguous: Yes  
Permitted: Yes  
Wet space: No  
Addition: No  
Conversion: No

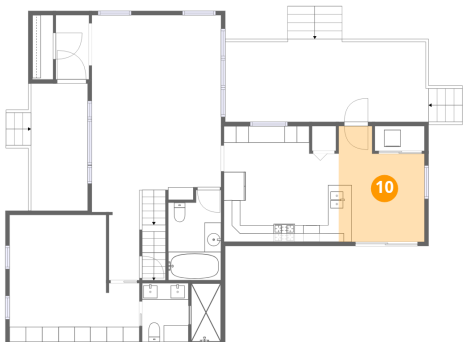
### 9 Floor 3 - Hall



Dimensions: 3'7" x 8'2"  
Area: 54 sq. ft  
Counted as living area: Yes

Heated: Yes  
Finished: Yes  
Enclosed: Yes  
Contiguous: Yes  
Permitted: Yes  
Wet space: No  
Addition: No  
Conversion: No

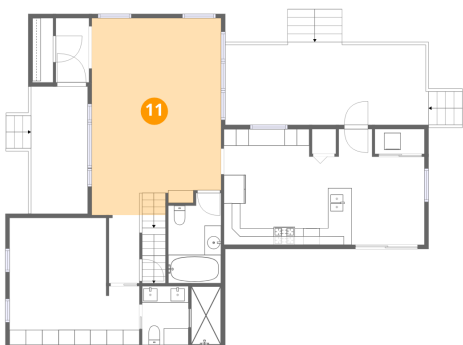
### 10 Floor 3 - Dining Area



Dimensions: 10'4" x 13'11"  
Area: 123 sq. ft  
Counted as living area: Yes

Heated: Yes  
Finished: Yes  
Enclosed: Yes  
Contiguous: Yes  
Permitted: Yes  
Wet space: No  
Addition: No  
Conversion: No

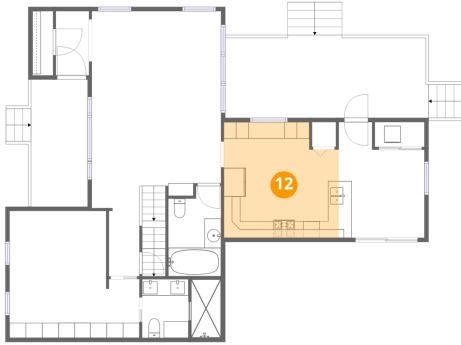
### 11 Floor 3 - Living Room



Dimensions: 15'7" x 23'9"  
Area: 354 sq. ft  
Counted as living area: Yes

Heated: Yes  
Finished: Yes  
Enclosed: Yes  
Contiguous: Yes  
Permitted: Yes  
Wet space: No  
Addition: No  
Conversion: No

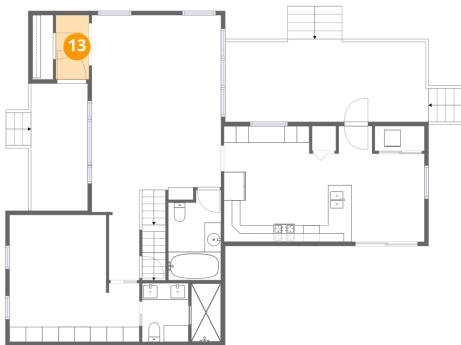
### 12 Floor 3 - Eat-in Kitchen



Dimensions: 13'10" x 13'11"  
Area: 181 sq. ft  
Counted as living area: Yes

Heated: Yes  
Finished: Yes  
Enclosed: Yes  
Contiguous: Yes  
Permitted: Yes  
Wet space: No  
Addition: No  
Conversion: No

### 13 Floor 3 - Foyer



Dimensions: 4'0" x 7'9"  
Area: 31 sq. ft  
Counted as living area: Yes

Heated: Yes  
Finished: Yes  
Enclosed: Yes  
Contiguous: Yes  
Permitted: Yes  
Wet space: No  
Addition: No  
Conversion: No

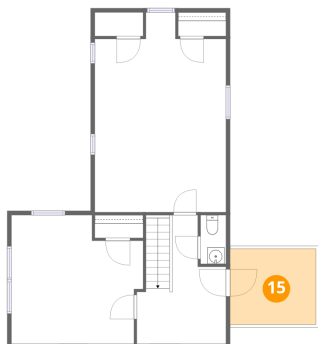
### 14 Floor 3 - Bath



Dimensions: 9'6" x 7'1"  
Area: 66 sq. ft  
Counted as living area: Yes

Heated: Yes  
Finished: Yes  
Enclosed: Yes  
Contiguous: Yes  
Permitted: Yes  
Wet space: Yes  
Addition: No  
Conversion: No

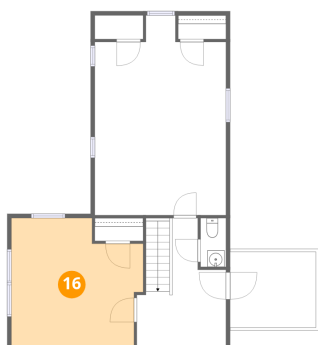
### 15 Floor 4 - Balcony



Dimensions: 10'2" x 9'0"  
Area: 92 sq. ft  
Counted as living area: No

Heated: No  
Finished: No  
Enclosed: No  
Contiguous: Yes  
Permitted: Yes  
Wet space: No  
Addition: No  
Conversion: No

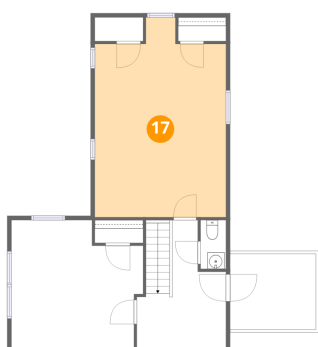
### 16 Floor 4 - Bedroom



Dimensions: 15'8" x 15'3"  
Area: 213 sq. ft  
Counted as living area: Yes

Heated: Yes  
Finished: Yes  
Enclosed: Yes  
Contiguous: Yes  
Permitted: Yes  
Wet space: No  
Addition: No  
Conversion: No

### 17 Floor 4 - Bedroom

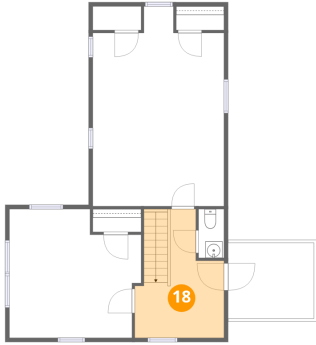


Dimensions: 15'7" x 23'9"  
Area: 331 sq. ft  
Counted as living area: Yes

Heated: Yes  
Finished: Yes  
Enclosed: Yes  
Contiguous: Yes  
Permitted: Yes  
Wet space: No  
Addition: No  
Conversion: No

**18** Floor 4 - Hall

---

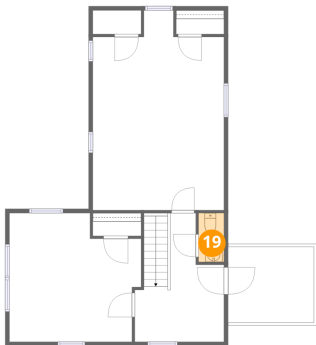


Dimensions: 10'7" x 15'3"  
Area: 131 sq. ft  
Counted as living area: Yes

Heated: Yes  
Finished: Yes  
Enclosed: Yes  
Contiguous: Yes  
Permitted: Yes  
Wet space: No  
Addition: No  
Conversion: No

**19** Floor 4 - Bath

---



Dimensions: 3'0" x 5'10"  
Area: 17 sq. ft  
Counted as living area: Yes

Heated: Yes  
Finished: Yes  
Enclosed: Yes  
Contiguous: Yes  
Permitted: Yes  
Wet space: Yes  
Addition: No  
Conversion: No