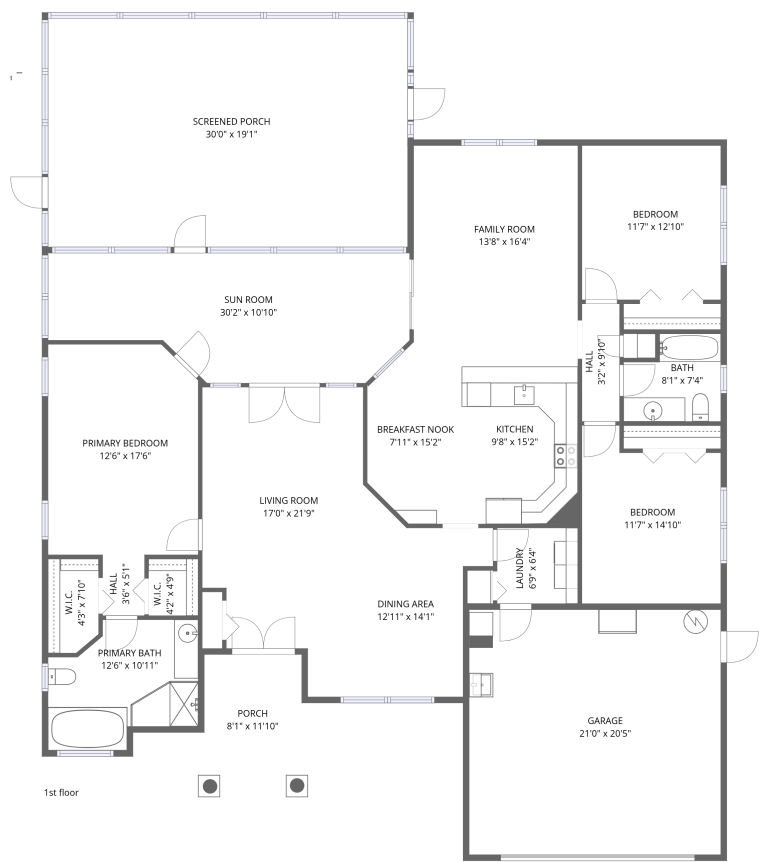


Home data report

8704 Cypress Lakes Boulevard, New Port Richey, Pasco County,
Florida, United States, 34653



Total Area: 2143 sq. ft
1st Floor: 2143 sq. ft
Excluded: Garage 428 sq. ft, Screened porch 571 sq. ft, Porch 92 sq. ft, Walls: 170 sq. ft

Property summary

 **1** Floors

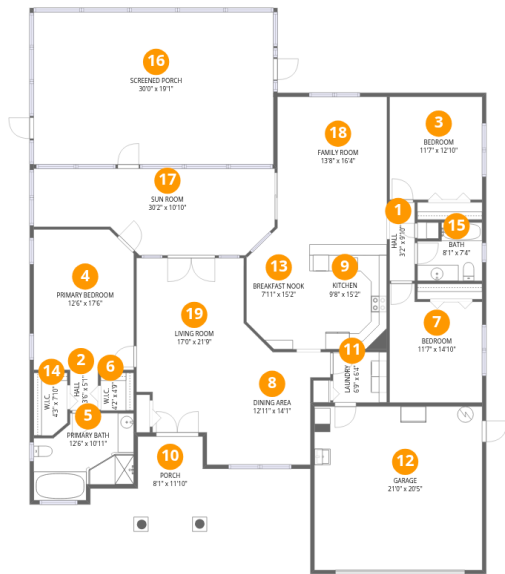
 **3** Bedrooms

 **2** Bathrooms

 **1** Garages

Home data report

8704 Cypress Lakes Boulevard, New Port Richey, Pasco County, Florida, United States, 34653



Room dimensions

Floor 1 Total:2143sqft Excluded: 1091sqft

#		Dimensions	sqft	Counted as living area
1	Hall	3'2" x 9'10"	31 sq. ft	Yes
2	Hall	3'6" x 5'1"	18 sq. ft	Yes
3	Bedroom	11'7" x 12'10"	149 sq. ft	Yes
4	Primary Bedroom	12'6" x 17'6"	219 sq. ft	Yes
5	Primary Bath	12'6" x 10'11"	136 sq. ft	Yes
6	W.I.C.	4'2" x 4'9"	20 sq. ft	Yes
7	Bedroom	11'7" x 14'10"	172 sq. ft	Yes
8	Dining Area	12'11" x 14'1"	182 sq. ft	Yes
9	Kitchen	9'8" x 15'2"	147 sq. ft	Yes
10	Porch	8'1" x 11'10"	96 sq. ft	No
11	Laundry	6'9" x 6'4"	42 sq. ft	Yes

Home data report

**8704 Cypress Lakes Boulevard, New Port Richey, Pasco County,
Florida, United States, 34653**

#		Dimensions	sqft	Counted as living area
12	Garage	21'0" x 20'5"	428 sq. ft	No
13	Breakfast Nook	7'11" x 15'2"	120 sq. ft	Yes
14	W.I.C.	4'3" x 7'10"	33 sq. ft	Yes
15	Bath	8'1" x 7'4"	59 sq. ft	Yes
16	Screened Porch	30'0" x 19'1"	571 sq. ft	No
17	Sun Room	30'2" x 10'10"	327 sq. ft	Yes
18	Family Room	13'8" x 16'4"	224 sq. ft	Yes
19	Living Room	17'0" x 21'9"	370 sq. ft	Yes

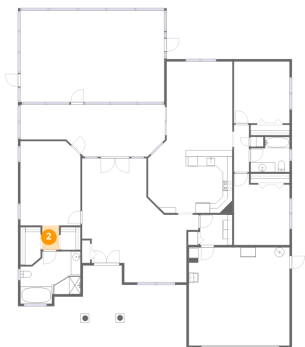
1 Floor 1 - Hall



Dimensions: 3'2" x 9'10"
Area: 31 sq. ft
Counted as living area: Yes

Heated: Yes
Finished: Yes
Enclosed: Yes
Contiguous: Yes
Permitted: Yes
Wet space: No
Addition: No
Conversion: No

2 Floor 1 - Hall

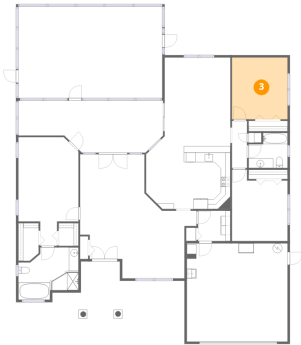


Dimensions: 3'6" x 5'1"
Area: 18 sq. ft
Counted as living area: Yes

Heated: Yes
Finished: Yes
Enclosed: Yes
Contiguous: Yes
Permitted: Yes
Wet space: No
Addition: No
Conversion: No

8704 Cypress Lakes Boulevard, New Port Richey, Pasco County,
Florida, United States, 34653

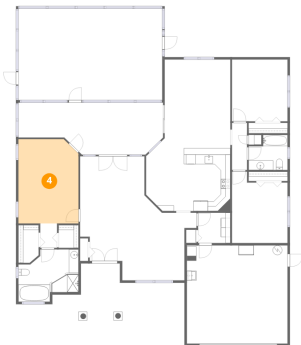
3 Floor 1 - Bedroom



Dimensions: 11'7" x 12'10"
Area: 149 sq. ft
Counted as living area: Yes

Heated: Yes
Finished: Yes
Enclosed: Yes
Contiguous: Yes
Permitted: Yes
Wet space: No
Addition: No
Conversion: No

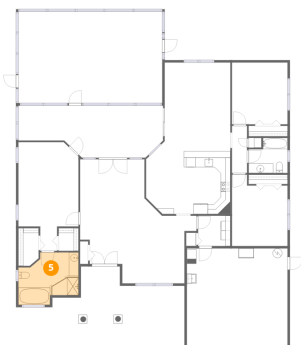
4 Floor 1 - Primary Bedroom



Dimensions: 12'6" x 17'6"
Area: 219 sq. ft
Counted as living area: Yes

Heated: Yes
Finished: Yes
Enclosed: Yes
Contiguous: Yes
Permitted: Yes
Wet space: No
Addition: No
Conversion: No

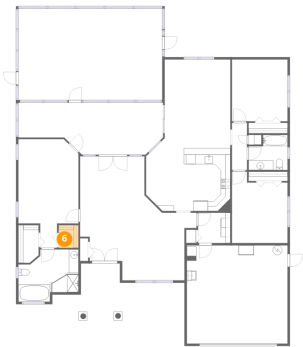
5 Floor 1 - Primary Bath



Dimensions: 12'6" x 10'11"
Area: 136 sq. ft
Counted as living area: Yes

Heated: Yes
Finished: Yes
Enclosed: Yes
Contiguous: Yes
Permitted: Yes
Wet space: Yes
Addition: No
Conversion: No

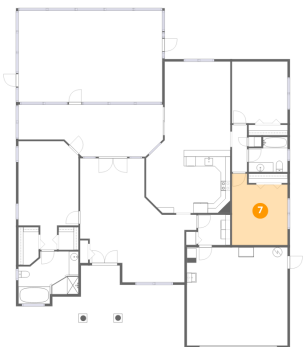
6 Floor 1 - W.I.C.



Dimensions: 4'2" x 4'9"
Area: 20 sq. ft
Counted as living area: Yes

Heated: Yes
Finished: Yes
Enclosed: Yes
Contiguous: Yes
Permitted: Yes
Wet space: No
Addition: No
Conversion: No

7 Floor 1 - Bedroom



Dimensions: 11'7" x 14'10"
Area: 172 sq. ft
Counted as living area: Yes

Heated: Yes
Finished: Yes
Enclosed: Yes
Contiguous: Yes
Permitted: Yes
Wet space: No
Addition: No
Conversion: No

8 Floor 1 - Dining Area

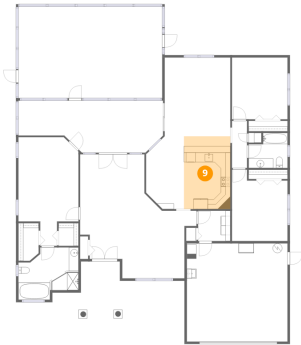


Dimensions: 12'11" x 14'1"
Area: 182 sq. ft
Counted as living area: Yes

Heated: Yes
Finished: Yes
Enclosed: Yes
Contiguous: Yes
Permitted: Yes
Wet space: No
Addition: No
Conversion: No

8704 Cypress Lakes Boulevard, New Port Richey, Pasco County,
Florida, United States, 34653

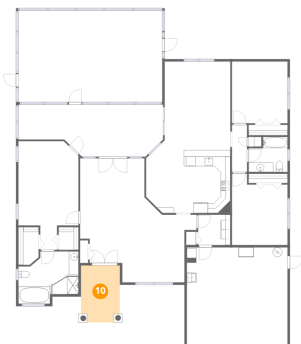
9 Floor 1 - Kitchen



Dimensions: 9'8" x 15'2"
Area: 147 sq. ft
Counted as living area: Yes

Heated: Yes
Finished: Yes
Enclosed: Yes
Contiguous: Yes
Permitted: Yes
Wet space: No
Addition: No
Conversion: No

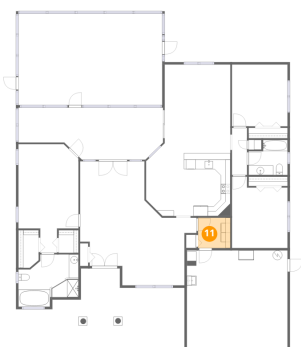
10 Floor 1 - Porch



Dimensions: 8'1" x 11'10"
Area: 96 sq. ft
Counted as living area: No

Heated: No
Finished: No
Enclosed: No
Contiguous: Yes
Permitted: Yes
Wet space: No
Addition: No
Conversion: No

11 Floor 1 - Laundry

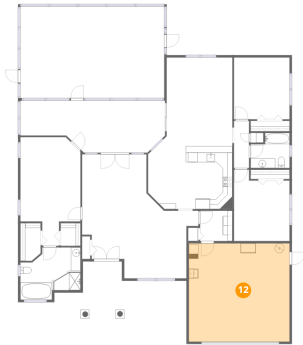


Dimensions: 6'9" x 6'4"
Area: 42 sq. ft
Counted as living area: Yes

Heated: Yes
Finished: Yes
Enclosed: Yes
Contiguous: Yes
Permitted: Yes
Wet space: No
Addition: No
Conversion: No

8704 Cypress Lakes Boulevard, New Port Richey, Pasco County,
Florida, United States, 34653

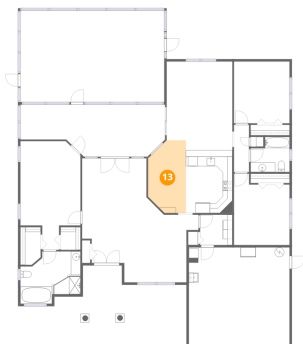
12 Floor 1 - Garage



Dimensions: 21'0" x 20'5"
Area: 428 sq. ft
Counted as living area: No

Heated: No
Finished: No
Enclosed: Yes
Contiguous: Yes
Permitted: Yes
Wet space: No
Addition: No
Conversion: No

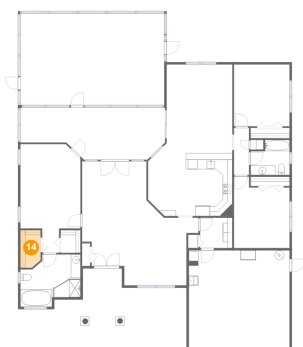
13 Floor 1 - Breakfast Nook



Dimensions: 7'11" x 15'2"
Area: 120 sq. ft
Counted as living area: Yes

Heated: Yes
Finished: Yes
Enclosed: Yes
Contiguous: Yes
Permitted: Yes
Wet space: No
Addition: No
Conversion: No

14 Floor 1 - W.I.C.

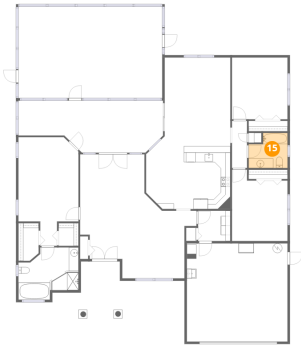


Dimensions: 4'3" x 7'10"
Area: 33 sq. ft
Counted as living area: Yes

Heated: Yes
Finished: Yes
Enclosed: Yes
Contiguous: Yes
Permitted: Yes
Wet space: No
Addition: No
Conversion: No

8704 Cypress Lakes Boulevard, New Port Richey, Pasco County,
Florida, United States, 34653

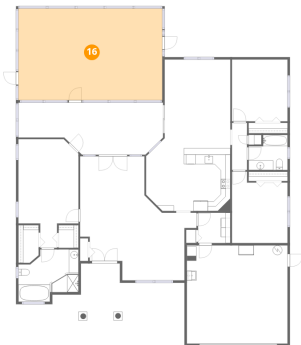
15 Floor 1 - Bath



Dimensions: 8'1" x 7'4"
Area: 59 sq. ft
Counted as living area: Yes

Heated: Yes
Finished: Yes
Enclosed: Yes
Contiguous: Yes
Permitted: Yes
Wet space: Yes
Addition: No
Conversion: No

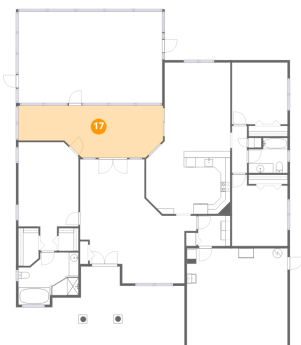
16 Floor 1 - Screened Porch



Dimensions: 30'0" x 19'1"
Area: 571 sq. ft
Counted as living area: No

Heated: No
Finished: No
Enclosed: No
Contiguous: Yes
Permitted: Yes
Wet space: No
Addition: No
Conversion: No

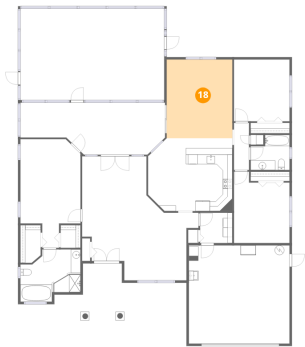
17 Floor 1 - Sun Room



Dimensions: 30'2" x 10'10"
Area: 327 sq. ft
Counted as living area: Yes

Heated: Yes
Finished: Yes
Enclosed: Yes
Contiguous: Yes
Permitted: Yes
Wet space: No
Addition: No
Conversion: No

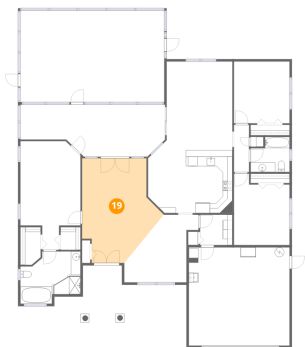
18 Floor 1 - Family Room



Dimensions: 13'8" x 16'4"
Area: 224 sq. ft
Counted as living area: Yes

Heated: Yes
Finished: Yes
Enclosed: Yes
Contiguous: Yes
Permitted: Yes
Wet space: No
Addition: No
Conversion: No

19 Floor 1 - Living Room



Dimensions: 17'0" x 21'9"
Area: 370 sq. ft
Counted as living area: Yes

Heated: Yes
Finished: Yes
Enclosed: Yes
Contiguous: Yes
Permitted: Yes
Wet space: No
Addition: No
Conversion: No