

Home data report

151 Belmont Road, Greece, New York 14612, United States



Total Area: 1027 sq. ft

Basement: 0 sq. ft, 1st Floor: 741 sq. ft, 2nd Floor: 286 sq. ft

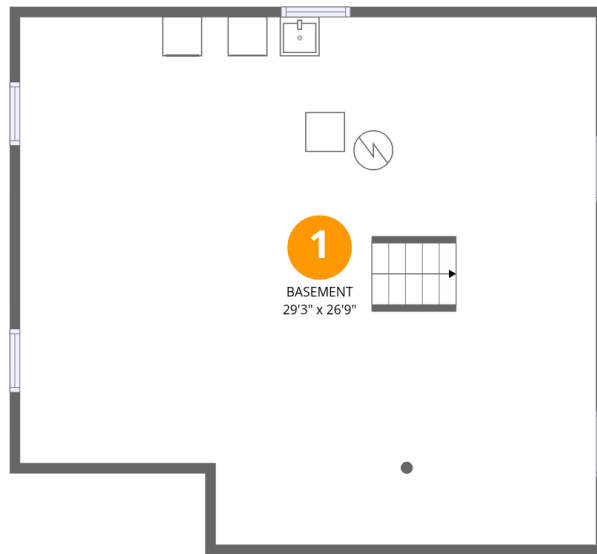
Excluded: Basement 741 sq. ft, Walls: 156 sq. ft

Property summary

 **3** Floors

 **1** Bedrooms

 **1** Bathrooms



Room dimensions

Floor 1 Below grade

Total:0sqft

Excluded: 741sqft

#		Dimensions	sqft	Counted as living area
1	Basement	29'3" x 26'9"	741 sq. ft	No



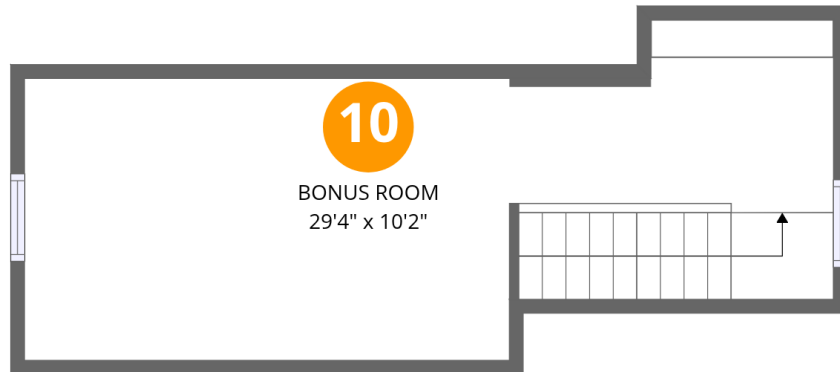
Room dimensions

Floor 2

Total:741sqft

Excluded: 0sqft

#		Dimensions	sqft	Counted as living area
2	Foyer	4'7" x 3'10"	17 sq. ft	Yes
3	Living Room	17'6" x 11'2"	196 sq. ft	Yes
4	Eat-in Kitchen	12'0" x 11'10"	137 sq. ft	Yes
5	Bedroom	10'3" x 11'2"	114 sq. ft	Yes
6	Hall	8'4" x 2'11"	24 sq. ft	Yes
7	Entry	3'8" x 3'2"	36 sq. ft	Yes
8	Office	9'11" x 11'2"	111 sq. ft	Yes
9	Bath	6'2" x 7'11"	40 sq. ft	Yes



Room dimensions

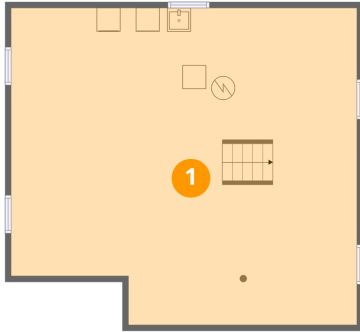
Floor 3

Total:286sqft

Excluded: 0sqft

#		Dimensions	sqft	Counted as living area
10	Bonus Room	29'4" x 10'2"	285 sq. ft	Yes

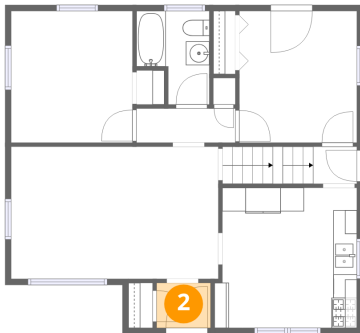
1 Floor 1 - Basement



Dimensions: 29'3" x 26'9"
Area: 741 sq. ft
Counted as living area: No

Heated: Yes
Finished: No
Enclosed: Yes
Contiguous: Yes
Permitted: Yes
Wet space: No
Addition: No
Conversion: No

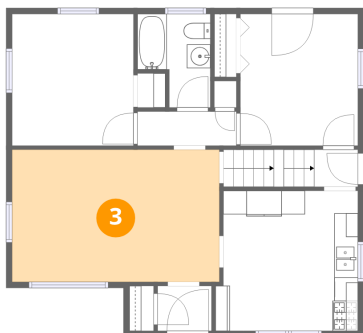
2 Floor 2 - Foyer



Dimensions: 4'7" x 3'10"
Area: 17 sq. ft
Counted as living area: Yes

Heated: Yes
Finished: Yes
Enclosed: Yes
Contiguous: Yes
Permitted: Yes
Wet space: No
Addition: No
Conversion: No

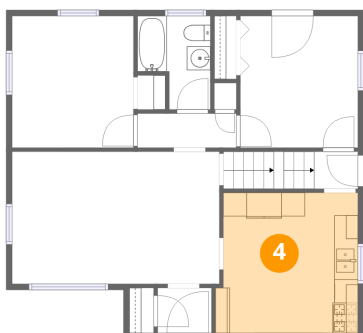
3 Floor 2 - Living Room



Dimensions: 17'6" x 11'2"
Area: 196 sq. ft
Counted as living area: Yes

Heated: Yes
Finished: Yes
Enclosed: Yes
Contiguous: Yes
Permitted: Yes
Wet space: No
Addition: No
Conversion: No

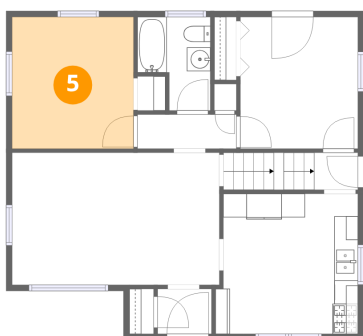
4 Floor 2 - Eat-in Kitchen



Dimensions: 12'0" x 11'10"
Area: 137 sq. ft
Counted as living area: Yes

Heated: Yes
Finished: Yes
Enclosed: Yes
Contiguous: Yes
Permitted: Yes
Wet space: No
Addition: No
Conversion: No

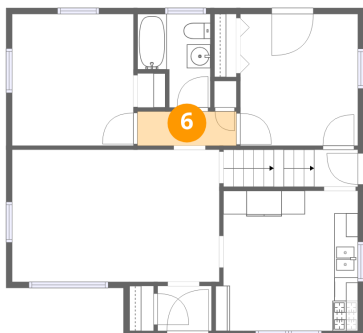
5 Floor 2 - Bedroom



Dimensions: 10'3" x 11'2"
Area: 114 sq. ft
Counted as living area: Yes

Heated: Yes
Finished: Yes
Enclosed: Yes
Contiguous: Yes
Permitted: Yes
Wet space: No
Addition: No
Conversion: No

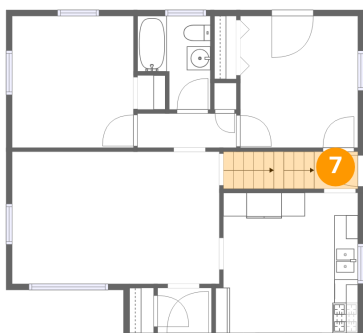
6 Floor 2 - Hall



Dimensions: 8'4" x 2'11"
Area: 24 sq. ft
Counted as living area: Yes

Heated: Yes
Finished: Yes
Enclosed: Yes
Contiguous: Yes
Permitted: Yes
Wet space: No
Addition: No
Conversion: No

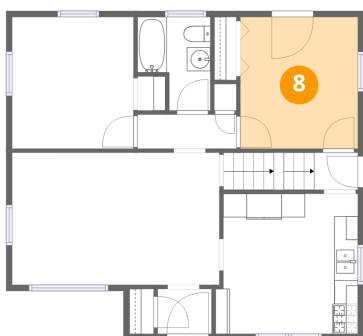
7 Floor 2 - Entry



Dimensions: 3'8" x 3'2"
Area: 36 sq. ft
Counted as living area: Yes

Heated: Yes
Finished: Yes
Enclosed: Yes
Contiguous: Yes
Permitted: Yes
Wet space: No
Addition: No
Conversion: No

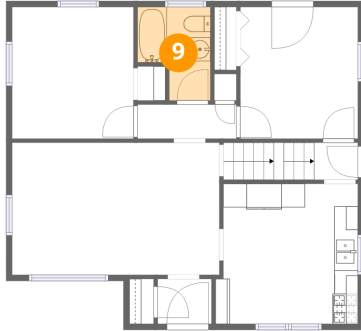
8 Floor 2 - Office



Dimensions: 9'11" x 11'2"
Area: 111 sq. ft
Counted as living area: Yes

Heated: Yes
Finished: Yes
Enclosed: Yes
Contiguous: Yes
Permitted: Yes
Wet space: No
Addition: No
Conversion: No

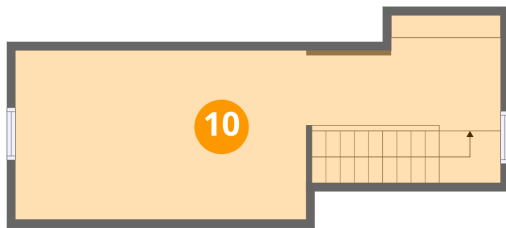
9 Floor 2 - Bath



Dimensions: 6'2" x 7'11"
Area: 40 sq. ft
Counted as living area: Yes

Heated: Yes
Finished: Yes
Enclosed: Yes
Contiguous: Yes
Permitted: Yes
Wet space: Yes
Addition: No
Conversion: No

10 Floor 3 - Bonus Room



Dimensions: 29'4" x 10'2"
Area: 285 sq. ft
Counted as living area: No

Heated: Yes
Finished: Yes
Enclosed: Yes
Contiguous: No
Permitted: Yes
Wet space: No
Addition: No
Conversion: No