

Home report

1417 Haydon Street, Robin Hood Park, Salem, Salem city,
Virginia, United States, 24153




Total Area: 953 sq. ft

Below Ground: 0 sq. ft, Floor 2: 953 sq. ft

Excluded: Basement 920 sq. ft, Room 26 sq. ft, Undefined 3 sq. ft, Walls: 129 sq. ft

Property summary

 **2** Floors

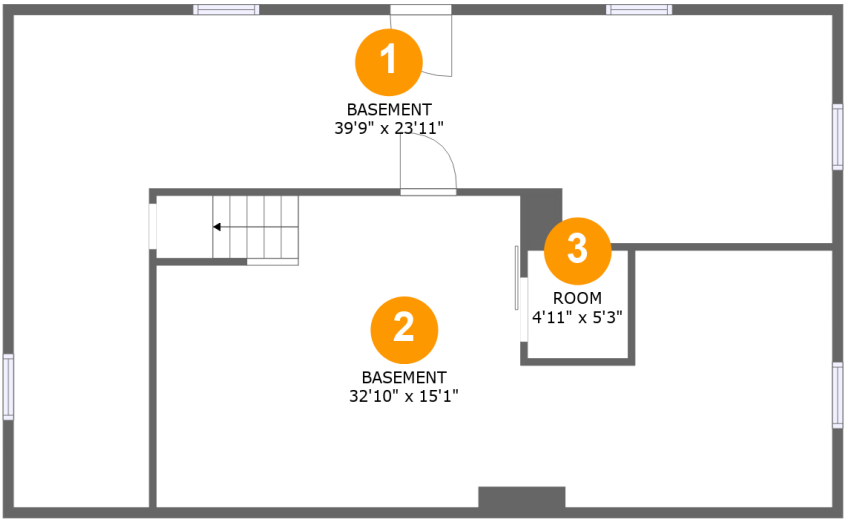
 **2** Bedrooms

 **1** Bathrooms

 **1** Half baths

Home report

1417 Haydon Street, Robin Hood Park, Salem, Salem city,
Virginia, United States, 24153



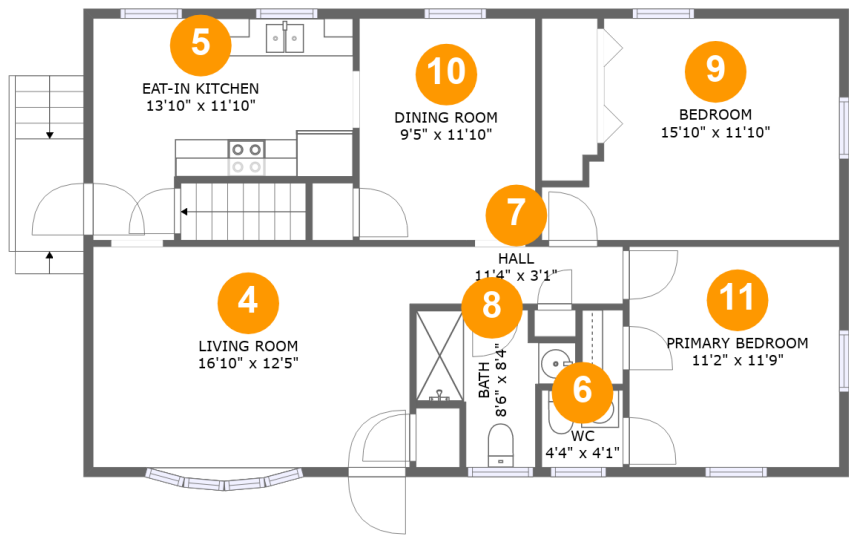
Room dimensions

Floor 1 Below ground Total:0sqft Excluded: 949sqft

#		Max Dimensions	sqft	Included
1	Basement	39'9" x 23'11"	471 sq. ft	No
2	Basement	32'10" x 15'1"	424 sq. ft	No
3	Room	4'11" x 5'3"	26 sq. ft	No

Home report

1417 Haydon Street, Robin Hood Park, Salem, Salem city,
Virginia, United States, 24153



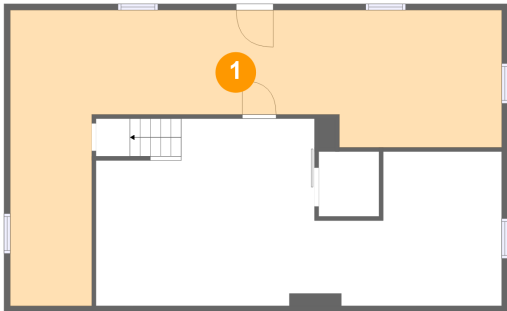
Room dimensions

Floor 2 Total:953sqft Excluded: 0sqft

#		Max Dimensions	sqft	Included
4	Living Room	16'10" x 12'5"	202 sq. ft	Yes
5	Eat-in Kitchen	13'10" x 11'10"	131 sq. ft	Yes
6	WC	4'4" x 4'1"	18 sq. ft	Yes
7	Hall	11'4" x 3'1"	35 sq. ft	Yes
8	Bath	8'6" x 8'4"	48 sq. ft	Yes
9	Bedroom	15'10" x 11'10"	158 sq. ft	Yes
10	Dining Room	9'5" x 11'10"	111 sq. ft	Yes
11	Primary Bedroom	11'2" x 11'9"	131 sq. ft	Yes

1417 Haydon Street, Robin Hood Park, Salem, Salem city,
Virginia, United States, 24153

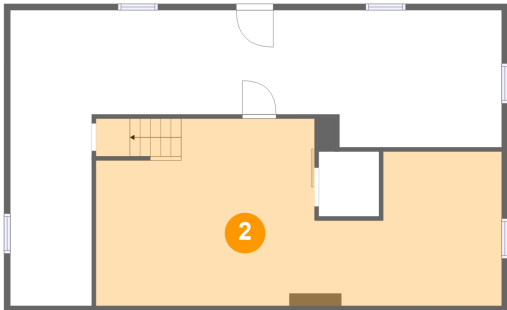
1 Floor 1 - Basement



Max Dimensions: 39'9" x 23'11"
Calculated Area: 471 sq. ft
Included: No

Heated: Yes
Finished: No
Enclosed: Yes
Contiguous: Yes
Permitted: Yes
Wet space: No
Addition: No
Conversion: No

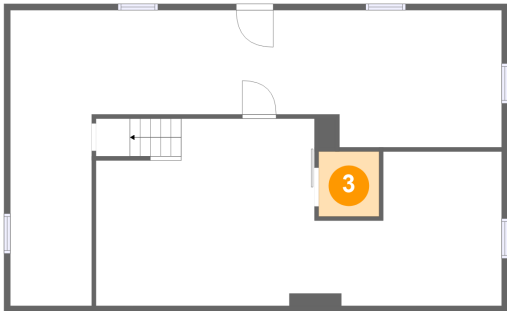
2 Floor 1 - Basement



Max Dimensions: 32'10" x 15'1"
Calculated Area: 424 sq. ft
Included: No

Heated: Yes
Finished: No
Enclosed: Yes
Contiguous: Yes
Permitted: Yes
Wet space: No
Addition: No
Conversion: No

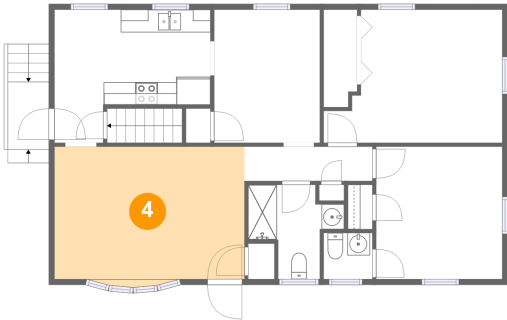
3 Floor 1 - Room



Max Dimensions: 4'11" x 5'3"
Calculated Area: 26 sq. ft
Included: No

Heated: Yes
Finished: No
Enclosed: Yes
Contiguous: Yes
Permitted: Yes
Wet space: No
Addition: No
Conversion: No

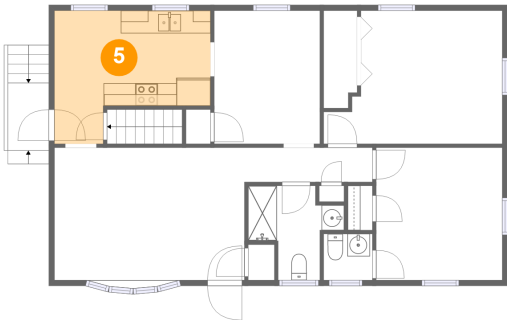
4 Floor 2 - Living Room



Max Dimensions: 16'10" x 12'5"
Calculated Area: 202 sq. ft
Included: Yes

Heated: Yes
Finished: Yes
Enclosed: Yes
Contiguous: Yes
Permitted: Yes
Wet space: No
Addition: No
Conversion: No

5 Floor 2 - Eat-in Kitchen



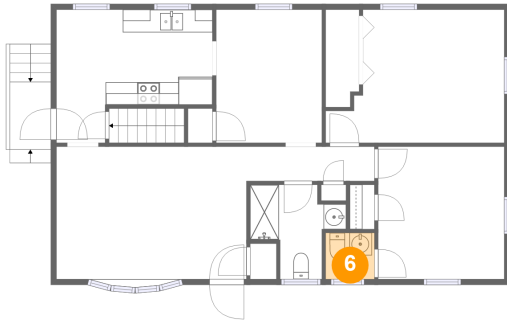
Max Dimensions: 13'10" x 11'10"
Calculated Area: 131 sq. ft
Included: Yes

Heated: Yes
Finished: Yes
Enclosed: Yes
Contiguous: Yes
Permitted: Yes
Wet space: No
Addition: No
Conversion: No

Home report

1417 Haydon Street, Robin Hood Park, Salem, Salem city,
Virginia, United States, 24153

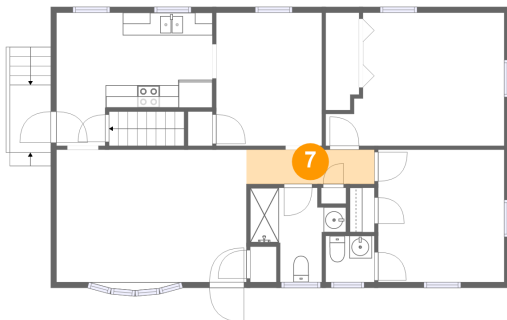
6 Floor 2 - WC



Max Dimensions: 4'4" x 4'1"
Calculated Area: 18 sq. ft
Included: Yes

Heated: Yes
Finished: Yes
Enclosed: Yes
Contiguous: Yes
Permitted: Yes
Wet space: Yes
Addition: No
Conversion: No

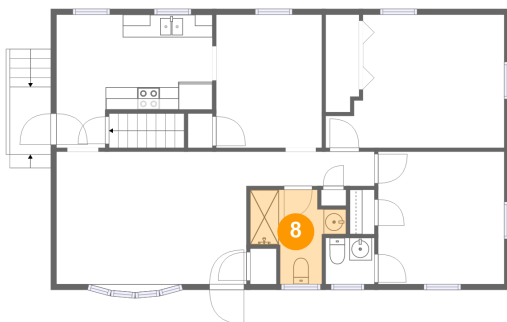
7 Floor 2 - Hall



Max Dimensions: 11'4" x 3'1"
Calculated Area: 35 sq. ft
Included: Yes

Heated: Yes
Finished: Yes
Enclosed: Yes
Contiguous: Yes
Permitted: Yes
Wet space: No
Addition: No
Conversion: No

8 Floor 2 - Bath

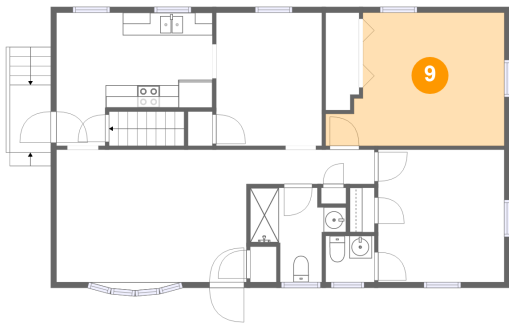


Max Dimensions: 8'6" x 8'4"
Calculated Area: 48 sq. ft
Included: Yes

Heated: Yes
Finished: Yes
Enclosed: Yes
Contiguous: Yes
Permitted: Yes
Wet space: Yes
Addition: No
Conversion: No

1417 Haydon Street, Robin Hood Park, Salem, Salem city,
Virginia, United States, 24153

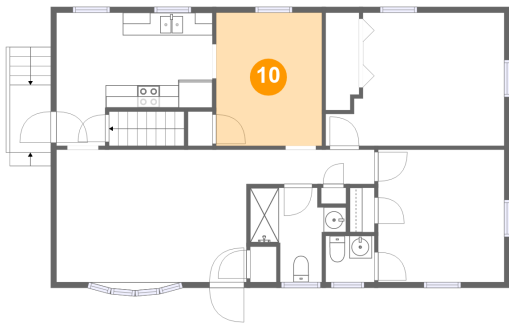
9 Floor 2 - Bedroom



Max Dimensions: 15'10" x 11'10"
Calculated Area: 158 sq. ft
Included: Yes

Heated: Yes
Finished: Yes
Enclosed: Yes
Contiguous: Yes
Permitted: Yes
Wet space: No
Addition: No
Conversion: No

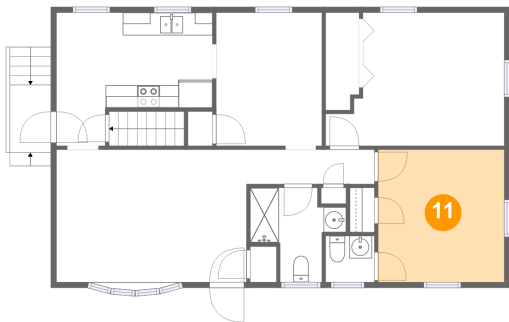
10 Floor 2 - Dining Room



Max Dimensions: 9'5" x 11'10"
Calculated Area: 111 sq. ft
Included: Yes

Heated: Yes
Finished: Yes
Enclosed: Yes
Contiguous: Yes
Permitted: Yes
Wet space: No
Addition: No
Conversion: No

11 Floor 2 - Primary Bedroom



Max Dimensions: 11'2" x 11'9"
Calculated Area: 131 sq. ft
Included: Yes

Heated: Yes
Finished: Yes
Enclosed: Yes
Contiguous: Yes
Permitted: Yes
Wet space: No
Addition: No
Conversion: No