

Basement
22'8" x 23'7"

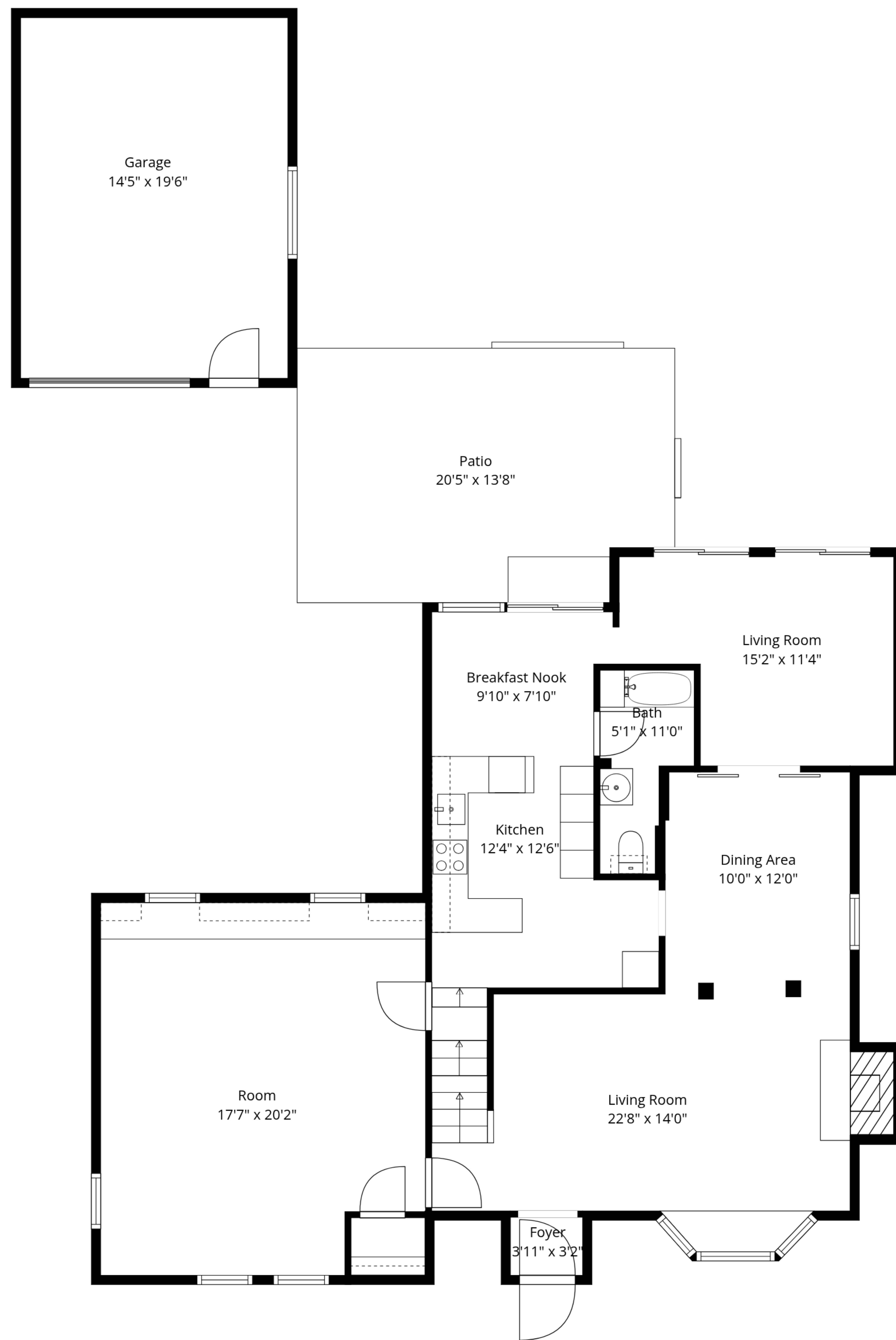
TOTAL: 1971 sq. ft

Basement: 0 sq. ft, 1st floor: 1187 sq. ft, 2nd floor: 784 sq. ft

EXCLUDED AREAS: BASEMENT: 534 sq. ft, GARAGE: 282 sq. ft, PATIO: 271 sq. ft,

FIREPLACE: 13 sq. ft, LOW CEILING: 29 sq. ft, ATTIC: 19 sq. ft,

WALLS: 232 sq. ft



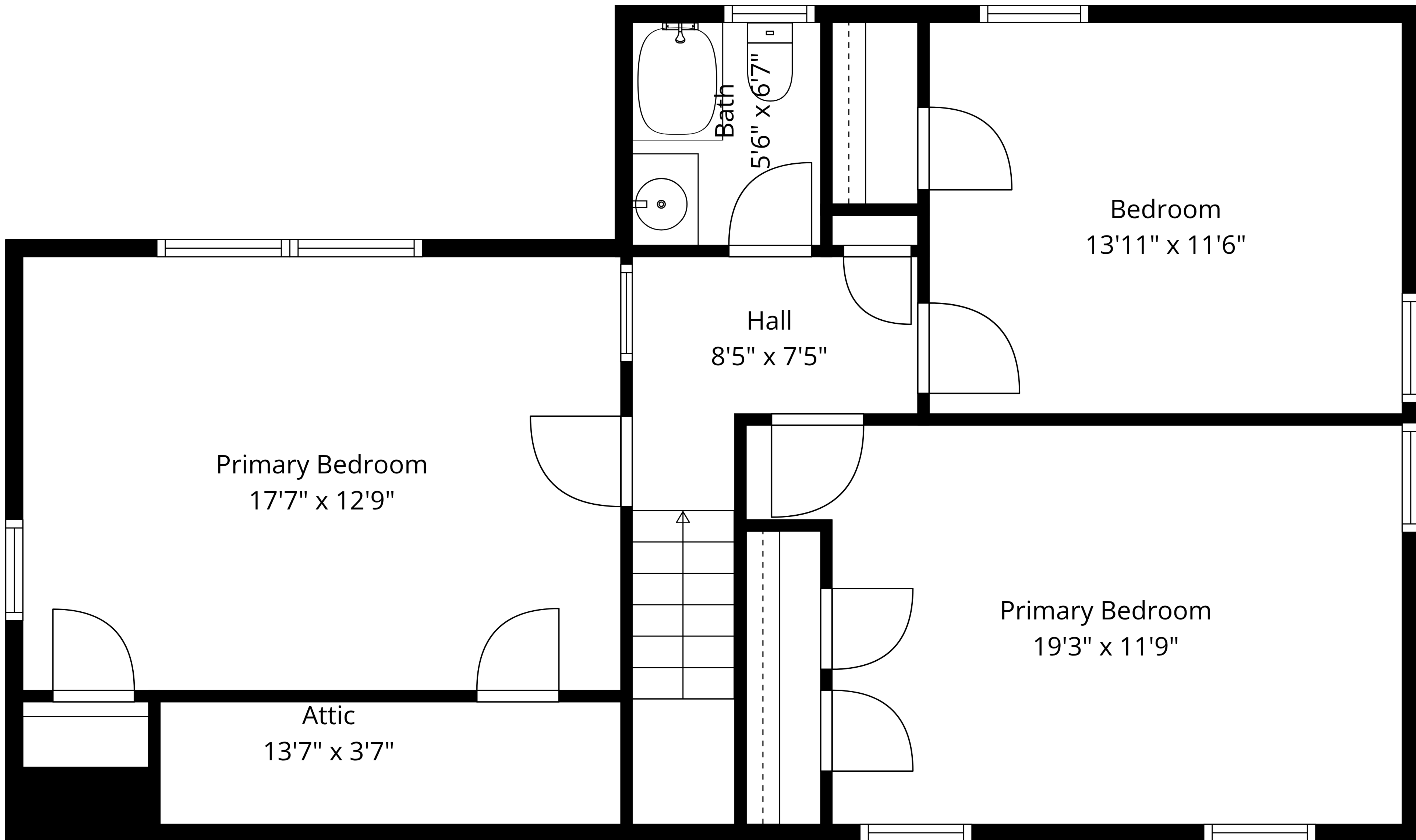
TOTAL: 1971 sq. ft

Basement: 0 sq. ft, 1st floor: 1187 sq. ft, 2nd floor: 784 sq. ft

EXCLUDED AREAS: BASEMENT: 534 sq. ft, GARAGE: 282 sq. ft, PATIO: 271 sq. ft,

FIREPLACE: 13 sq. ft, LOW CEILING: 29 sq. ft, ATTIC: 19 sq. ft,

WALLS: 232 sq. ft



TOTAL: 1971 sq. ft

Basement: 0 sq. ft, 1st floor: 1187 sq. ft, 2nd floor: 784 sq. ft

EXCLUDED AREAS: BASEMENT: 534 sq. ft, GARAGE: 282 sq. ft, PATIO: 271 sq. ft,

FIREPLACE: 13 sq. ft, LOW CEILING: 29 sq. ft, ATTIC: 19 sq. ft,

WALLS: 232 sq. ft



Basement

1st Floor

2nd Floor

TOTAL: 1971 sq. ft

Basement: 0 sq. ft, 1st floor: 1187 sq. ft, 2nd floor: 784 sq. ft

EXCLUDED AREAS: BASEMENT: 534 sq. ft, GARAGE: 282 sq. ft, PATIO: 271 sq. ft,

FIREPLACE: 13 sq. ft, LOW CEILING: 29 sq. ft, ATTIC: 19 sq. ft,

WALLS: 232 sq. ft