

Home data report

15011 Leafmore Drive Southeast, Huntsville, Madison County, Alabama, United States, 35803



Total Area: 3622 sq. ft

1st Floor: 1991 sq. ft, 2nd Floor: 1631 sq. ft

Excluded: Garage 510 sq. ft, Screened porch 318 sq. ft, Fireplace 18 sq. ft, Open to below 122 sq. ft

Property summary



2 Floors



5 Bedrooms



2 Bathrooms

Home data report

**15011 Leafmore Drive Southeast, Huntsville, Madison County,
Alabama, United States, 35803**



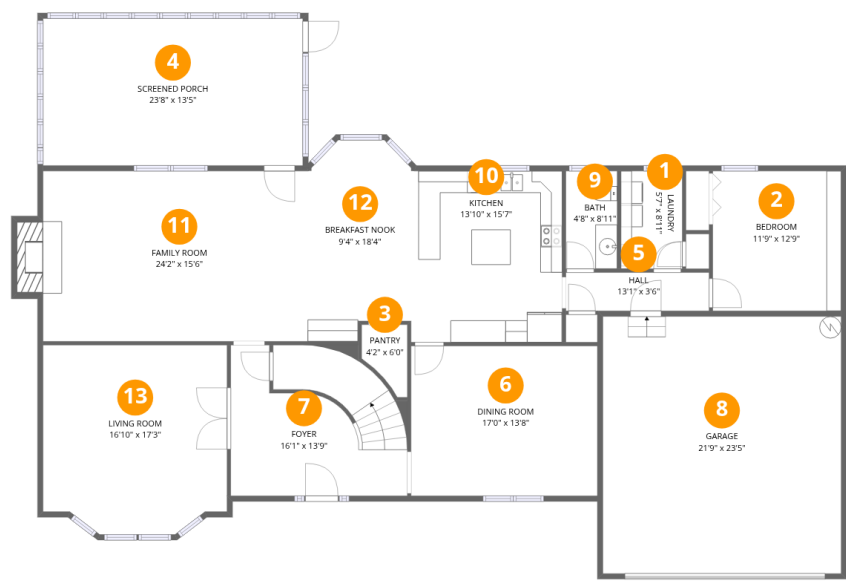
1
Half baths



1
Garages

Home data report

15011 Leafmore Drive Southeast, Huntsville, Madison County, Alabama, United States, 35803



Room dimensions

Floor 1 Total:1991sqft Excluded: 846sqft

#		Dimensions	sqft	Counted as living area
1	Laundry	5'7" x 8'11"	50 sq. ft	Yes
2	Bedroom	11'9" x 12'9"	149 sq. ft	Yes
3	Pantry	4'2" x 6'0"	21 sq. ft	Yes
4	Screened Porch	23'8" x 13'5"	318 sq. ft	No
5	Hall	13'1" x 3'6"	46 sq. ft	Yes
6	Dining Room	17'0" x 13'8"	232 sq. ft	Yes
7	Foyer	16'1" x 13'9"	202 sq. ft	Yes
8	Garage	21'9" x 23'5"	510 sq. ft	No
9	Bath	4'8" x 8'11"	42 sq. ft	Yes
10	Kitchen	13'10" x 15'7"	215 sq. ft	Yes
11	Family Room	24'2" x 15'6"	392 sq. ft	Yes

Home data report

15011 Leafmore Drive Southeast, Huntsville, Madison County, Alabama, United States, 35803

#		Dimensions	sqft	Counted as living area
12	Breakfast Nook	9'4" x 18'4"	156 sq. ft	Yes
13	Living Room	16'10" x 17'3"	275 sq. ft	Yes

Home data report

15011 Leafmore Drive Southeast, Huntsville, Madison County, Alabama, United States, 35803



Room dimensions

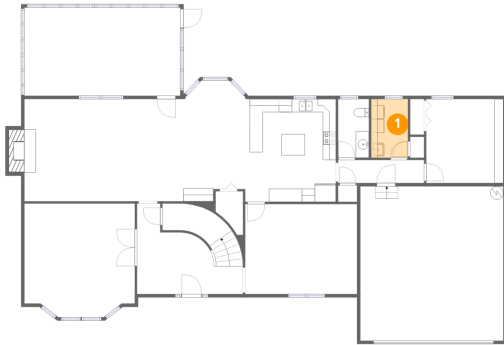
Floor 2

Total:1631sqft Excluded: 122sqft

#		Dimensions	sqft	Counted as living area
14	Hall	18'0" x 8'1"	172 sq. ft	Yes
15	Bedroom	12'0" x 11'6"	137 sq. ft	Yes
16	Bedroom	17'0" x 13'8"	213 sq. ft	Yes
17	Open To Below	16'1" x 9'4"	122 sq. ft	No
18	W.I.C.	6'5" x 11'6"	74 sq. ft	Yes
19	Bath	8'2" x 11'6"	75 sq. ft	Yes
20	Primary Bedroom	16'10" x 21'4"	343 sq. ft	Yes
21	Bedroom	15'2" x 15'7"	187 sq. ft	Yes
22	Primary Bath	10'0" x 11'6"	115 sq. ft	Yes

**15011 Leafmore Drive Southeast, Huntsville, Madison County,
Alabama, United States, 35803**

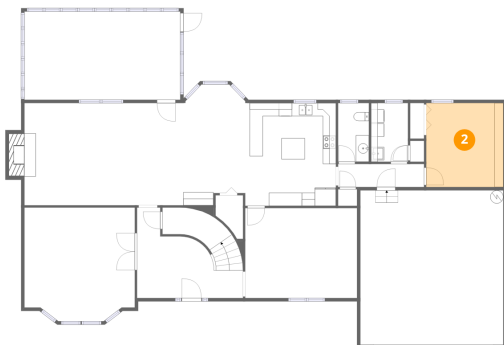
1 Floor 1 - Laundry



Dimensions: 5'7" x 8'11"
Area: 50 sq. ft
Counted as living area: Yes

Heated: Yes
Finished: Yes
Enclosed: Yes
Contiguous: Yes
Permitted: Yes
Wet space: No
Addition: No
Conversion: No

2 Floor 1 - Bedroom



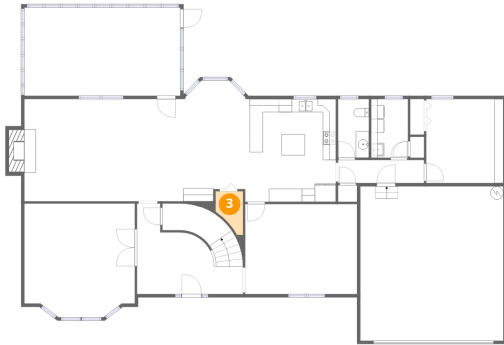
Dimensions: 11'9" x 12'9"
Area: 149 sq. ft
Counted as living area: Yes

Heated: Yes
Finished: Yes
Enclosed: Yes
Contiguous: Yes
Permitted: Yes
Wet space: No
Addition: No
Conversion: No

Home data report

15011 Leafmore Drive Southeast, Huntsville, Madison County, Alabama, United States, 35803

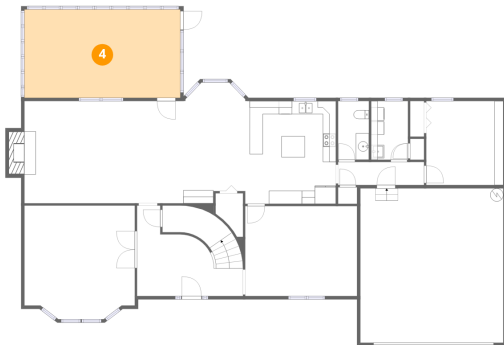
3 Floor 1 - Pantry



Dimensions: 4'2" x 6'0"
Area: 21 sq. ft
Counted as living area: Yes

Heated: Yes
Finished: Yes
Enclosed: Yes
Contiguous: Yes
Permitted: Yes
Wet space: No
Addition: No
Conversion: No

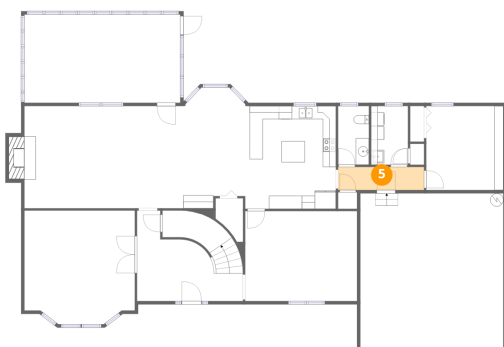
4 Floor 1 - Screened Porch



Dimensions: 23'8" x 13'5"
Area: 318 sq. ft
Counted as living area: No

Heated: No
Finished: No
Enclosed: No
Contiguous: Yes
Permitted: Yes
Wet space: No
Addition: No
Conversion: No

5 Floor 1 - Hall

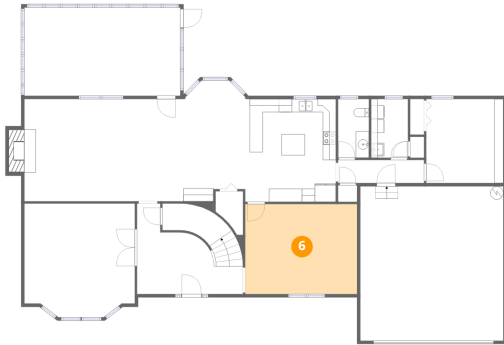


Dimensions: 13'1" x 3'6"
Area: 46 sq. ft
Counted as living area: Yes

Heated: Yes
Finished: Yes
Enclosed: Yes
Contiguous: Yes
Permitted: Yes
Wet space: No
Addition: No
Conversion: No

15011 Leafmore Drive Southeast, Huntsville, Madison County,
Alabama, United States, 35803

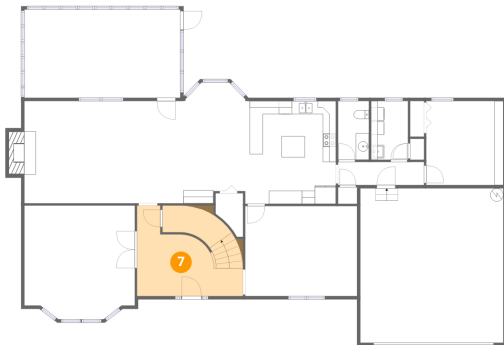
6 Floor 1 - Dining Room



Dimensions: 17'0" x 13'8"
Area: 232 sq. ft
Counted as living area: Yes

Heated: Yes
Finished: Yes
Enclosed: Yes
Contiguous: Yes
Permitted: Yes
Wet space: No
Addition: No
Conversion: No

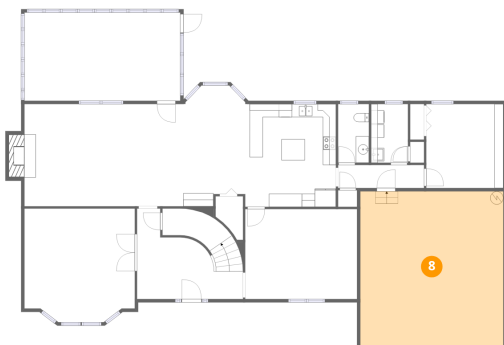
7 Floor 1 - Foyer



Dimensions: 16'1" x 13'9"
Area: 202 sq. ft
Counted as living area: Yes

Heated: Yes
Finished: Yes
Enclosed: Yes
Contiguous: Yes
Permitted: Yes
Wet space: No
Addition: No
Conversion: No

8 Floor 1 - Garage

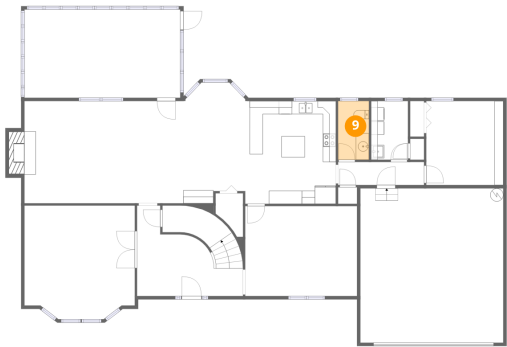


Dimensions: 21'9" x 23'5"
Area: 510 sq. ft
Counted as living area: No

Heated: No
Finished: No
Enclosed: Yes
Contiguous: Yes
Permitted: Yes
Wet space: No
Addition: No
Conversion: No

15011 Leafmore Drive Southeast, Huntsville, Madison County, Alabama, United States, 35803

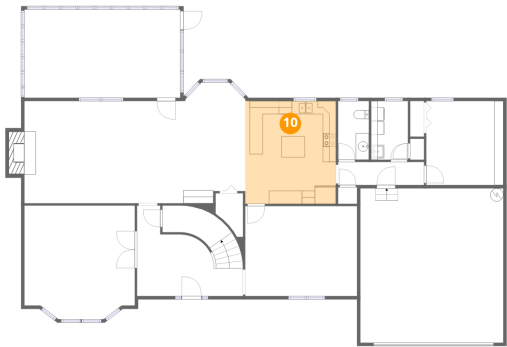
9 Floor 1 - Bath



Dimensions: 4'8" x 8'11"
Area: 42 sq. ft
Counted as living area: Yes

Heated: Yes
Finished: Yes
Enclosed: Yes
Contiguous: Yes
Permitted: Yes
Wet space: Yes
Addition: No
Conversion: No

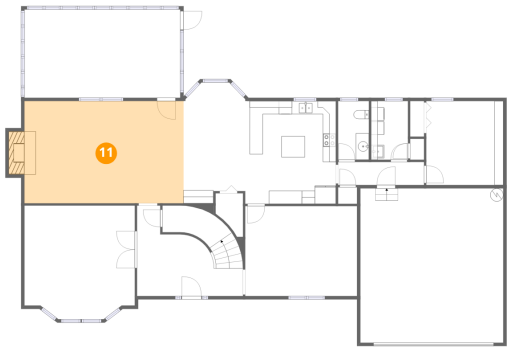
10 Floor 1 - Kitchen



Dimensions: 13'10" x 15'7"
Area: 215 sq. ft
Counted as living area: Yes

Heated: Yes
Finished: Yes
Enclosed: Yes
Contiguous: Yes
Permitted: Yes
Wet space: No
Addition: No
Conversion: No

11 Floor 1 - Family Room

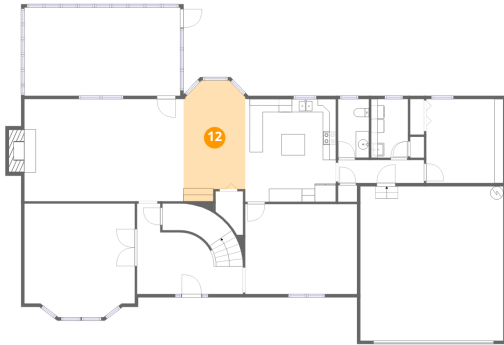


Dimensions: 24'2" x 15'6"
Area: 392 sq. ft
Counted as living area: Yes

Heated: Yes
Finished: Yes
Enclosed: Yes
Contiguous: Yes
Permitted: Yes
Wet space: No
Addition: No
Conversion: No

15011 Leafmore Drive Southeast, Huntsville, Madison County,
Alabama, United States, 35803

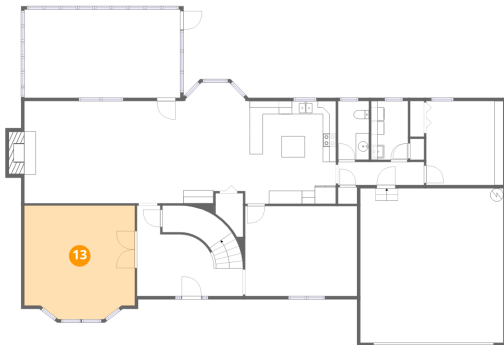
12 Floor 1 - Breakfast Nook



Dimensions: 9'4" x 18'4"
Area: 156 sq. ft
Counted as living area: Yes

Heated: Yes
Finished: Yes
Enclosed: Yes
Contiguous: Yes
Permitted: Yes
Wet space: No
Addition: No
Conversion: No

13 Floor 1 - Living Room



Dimensions: 16'10" x 17'3"
Area: 275 sq. ft
Counted as living area: Yes

Heated: Yes
Finished: Yes
Enclosed: Yes
Contiguous: Yes
Permitted: Yes
Wet space: No
Addition: No
Conversion: No

14 Floor 2 - Hall



Dimensions: 18'0" x 8'1"
Area: 172 sq. ft
Counted as living area: Yes

Heated: Yes
Finished: Yes
Enclosed: Yes
Contiguous: Yes
Permitted: Yes
Wet space: No
Addition: No
Conversion: No

15011 Leafmore Drive Southeast, Huntsville, Madison County,
Alabama, United States, 35803

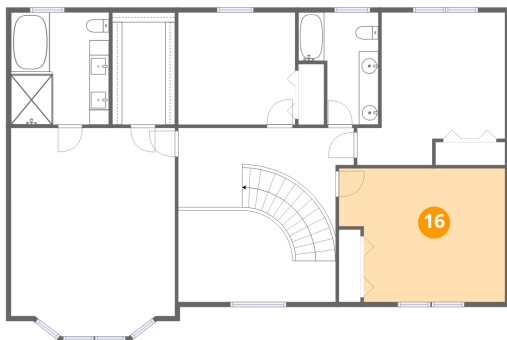
15 Floor 2 - Bedroom



Dimensions: 12'0" x 11'6"
Area: 137 sq. ft
Counted as living area: Yes

Heated: Yes
Finished: Yes
Enclosed: Yes
Contiguous: Yes
Permitted: Yes
Wet space: No
Addition: No
Conversion: No

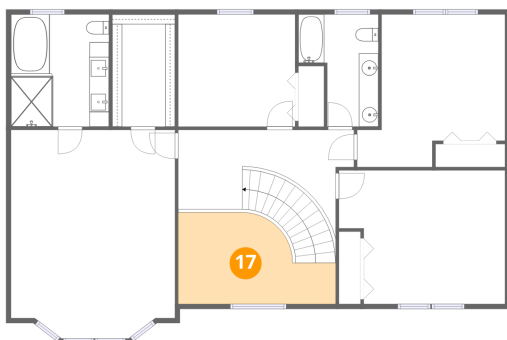
16 Floor 2 - Bedroom



Dimensions: 17'0" x 13'8"
Area: 213 sq. ft
Counted as living area: Yes

Heated: Yes
Finished: Yes
Enclosed: Yes
Contiguous: Yes
Permitted: Yes
Wet space: No
Addition: No
Conversion: No

17 Floor 2 - Open To Below

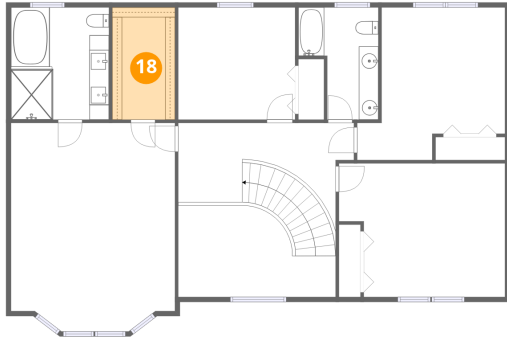


Dimensions: 16'1" x 9'4"
Area: 122 sq. ft
Counted as living area: No

Heated: No
Finished: No
Enclosed: No
Contiguous: Yes
Permitted: No
Wet space: No
Addition: No
Conversion: No

15011 Leafmore Drive Southeast, Huntsville, Madison County,
Alabama, United States, 35803

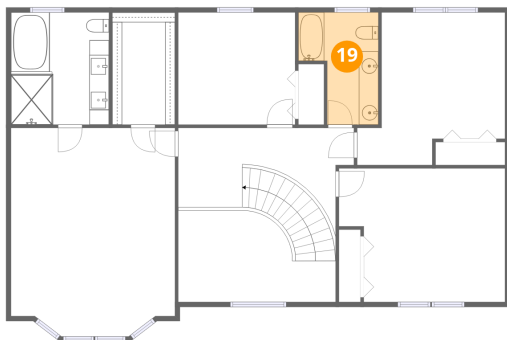
18 Floor 2 - W.I.C.



Dimensions: 6'5" x 11'6"
Area: 74 sq. ft
Counted as living area: Yes

Heated: Yes
Finished: Yes
Enclosed: Yes
Contiguous: Yes
Permitted: Yes
Wet space: No
Addition: No
Conversion: No

19 Floor 2 - Bath



Dimensions: 8'2" x 11'6"
Area: 75 sq. ft
Counted as living area: Yes

Heated: Yes
Finished: Yes
Enclosed: Yes
Contiguous: Yes
Permitted: Yes
Wet space: Yes
Addition: No
Conversion: No

20 Floor 2 - Primary Bedroom

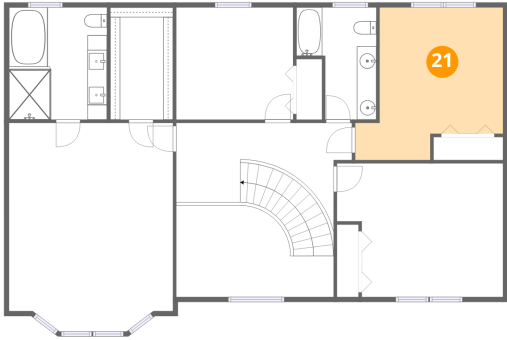


Dimensions: 16'10" x 21'4"
Area: 343 sq. ft
Counted as living area: Yes

Heated: Yes
Finished: Yes
Enclosed: Yes
Contiguous: Yes
Permitted: Yes
Wet space: No
Addition: No
Conversion: No

15011 Leafmore Drive Southeast, Huntsville, Madison County, Alabama, United States, 35803

21 Floor 2 - Bedroom



Dimensions: 15'2" x 15'7"
Area: 187 sq. ft
Counted as living area: Yes

Heated: Yes
Finished: Yes
Enclosed: Yes
Contiguous: Yes
Permitted: Yes
Wet space: No
Addition: No
Conversion: No

22 Floor 2 - Primary Bath



Dimensions: 10'0" x 11'6"
Area: 115 sq. ft
Counted as living area: Yes

Heated: Yes
Finished: Yes
Enclosed: Yes
Contiguous: Yes
Permitted: Yes
Wet space: Yes
Addition: No
Conversion: No