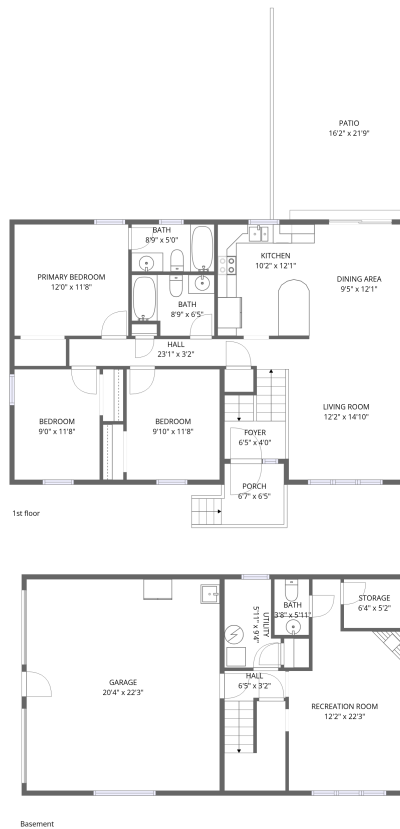


## Home data report

742 Pitt Avenue, Vinton, Roanoke County, Virginia, United States, 24179



**Total Area: 1475 sq. ft**

Basement: 388 sq. ft, 1st Floor: 1087 sq. ft

Excluded: Garage 453 sq. ft, Storage 33 sq. ft, Porch 41 sq. ft, Patio 308 sq. ft, Walls: 145 sq. ft

## Property summary



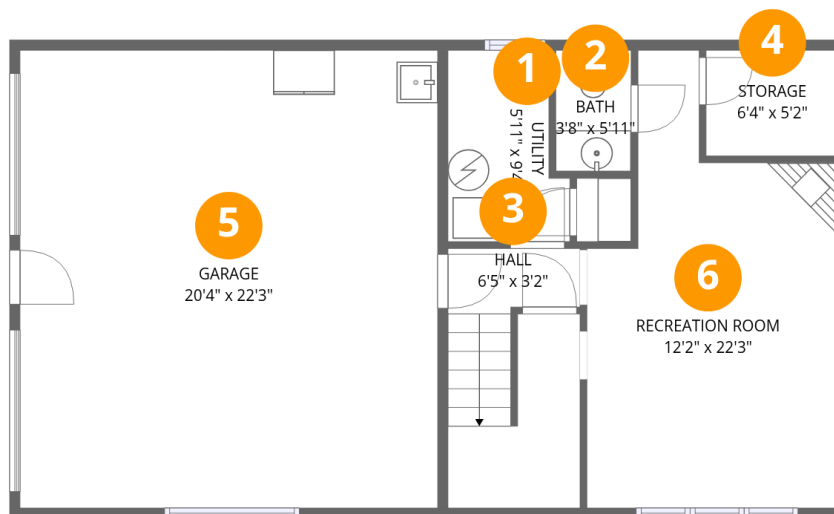
Home data report

**742 Pitt Avenue, Vinton, Roanoke County, Virginia, United States, 24179**

 **1**  
Half baths

 **1**  
Garages

742 Pitt Avenue, Vinton, Roanoke County, Virginia, United States, 24179



### Room dimensions

Floor 1 Below grade

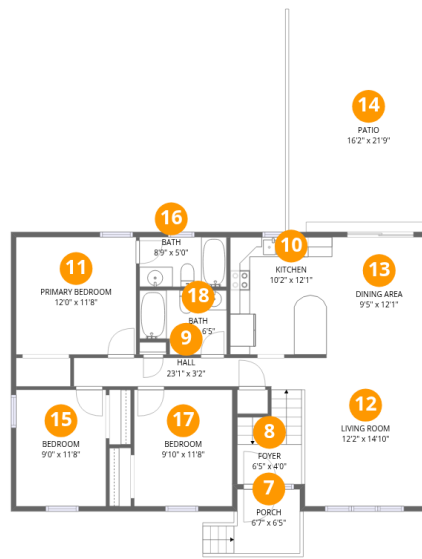
Total:388sqft

Excluded: 486sqft

#		Dimensions	sqft	Counted as living area
1	Utility	5'11" x 9'4"	49 sq. ft	Yes
2	Bath	3'8" x 5'11"	22 sq. ft	Yes
3	Hall	6'5" x 3'2"	78 sq. ft	Yes
4	Storage	6'4" x 5'2"	33 sq. ft	No
5	Garage	20'4" x 22'3"	453 sq. ft	No
6	Recreation Room	12'2" x 22'3"	210 sq. ft	Yes

Home data report

742 Pitt Avenue, Vinton, Roanoke County, Virginia, United States, 24179



## Room dimensions

Floor 2

Total:1087sqft

Excluded: 349sqft

#		Dimensions	sqft	Counted as living area
7	Porch	6'7" x 6'5"	41 sq. ft	No
8	Foyer	6'5" x 4'0"	27 sq. ft	Yes
9	Hall	23'1" x 3'2"	95 sq. ft	Yes
10	Kitchen	10'2" x 12'1"	120 sq. ft	Yes
11	Primary Bedroom	12'0" x 11'8"	141 sq. ft	Yes
12	Living Room	12'2" x 14'10"	180 sq. ft	Yes
13	Dining Area	9'5" x 12'1"	114 sq. ft	Yes
14	Patio	16'2" x 21'9"	308 sq. ft	No
15	Bedroom	9'0" x 11'8"	105 sq. ft	Yes
16	Bath	8'9" x 5'0"	43 sq. ft	Yes
17	Bedroom	9'10" x 11'8"	114 sq. ft	Yes

Home data report

**742 Pitt Avenue, Vinton, Roanoke County, Virginia, United States, 24179**

#		Dimensions	sqft	Counted as living area
18	Bath	8'9" x 6'5"	51 sq. ft	Yes

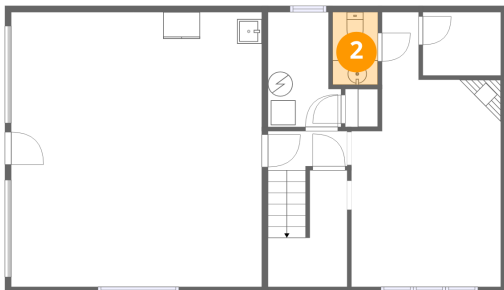
## 1 Floor 1 - Utility



Dimensions: 5'11" x 9'4"  
Area: 49 sq. ft  
Counted as living area: Yes

Heated: Yes  
Finished: Yes  
Enclosed: Yes  
Contiguous: Yes  
Permitted: Yes  
Wet space: No  
Addition: No  
Conversion: No

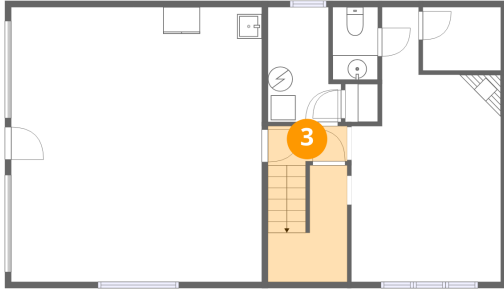
## 2 Floor 1 - Bath



Dimensions: 3'8" x 5'11"  
Area: 22 sq. ft  
Counted as living area: Yes

Heated: Yes  
Finished: Yes  
Enclosed: Yes  
Contiguous: Yes  
Permitted: Yes  
Wet space: Yes  
Addition: No  
Conversion: No

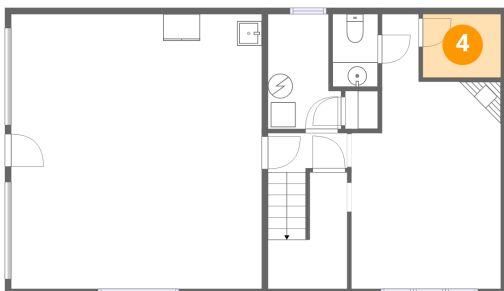
### 3 Floor 1 - Hall



Dimensions: 6'5" x 3'2"  
Area: 78 sq. ft  
Counted as living area: Yes

Heated: Yes  
Finished: Yes  
Enclosed: Yes  
Contiguous: Yes  
Permitted: Yes  
Wet space: No  
Addition: No  
Conversion: No

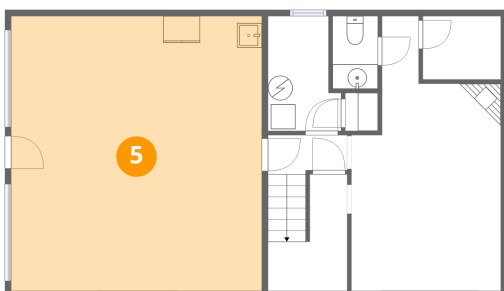
### 4 Floor 1 - Storage



Dimensions: 6'4" x 5'2"  
Area: 33 sq. ft  
Counted as living area: No

Heated: No  
Finished: No  
Enclosed: No  
Contiguous: Yes  
Permitted: Yes  
Wet space: No  
Addition: No  
Conversion: No

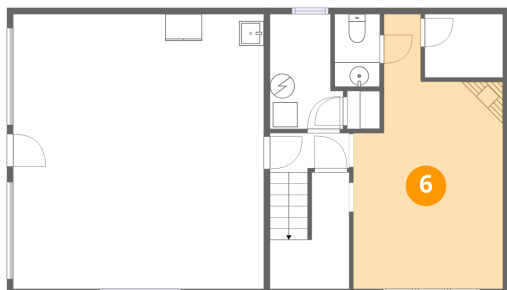
### 5 Floor 1 - Garage



Dimensions: 20'4" x 22'3"  
Area: 453 sq. ft  
Counted as living area: No

Heated: No  
Finished: No  
Enclosed: Yes  
Contiguous: Yes  
Permitted: Yes  
Wet space: No  
Addition: No  
Conversion: No

### 6 Floor 1 - Recreation Room



Dimensions: 12'2" x 22'3"  
Area: 210 sq. ft  
Counted as living area: Yes

Heated: Yes  
Finished: Yes  
Enclosed: Yes  
Contiguous: Yes  
Permitted: Yes  
Wet space: No  
Addition: No  
Conversion: No

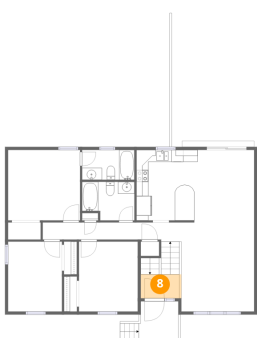
### 7 Floor 2 - Porch



Dimensions: 6'7" x 6'5"  
Area: 41 sq. ft  
Counted as living area: No

Heated: No  
Finished: No  
Enclosed: No  
Contiguous: Yes  
Permitted: Yes  
Wet space: No  
Addition: No  
Conversion: No

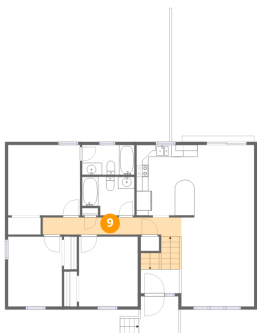
### 8 Floor 2 - Foyer



Dimensions: 6'5" x 4'0"  
Area: 27 sq. ft  
Counted as living area: Yes

Heated: Yes  
Finished: Yes  
Enclosed: Yes  
Contiguous: Yes  
Permitted: Yes  
Wet space: No  
Addition: No  
Conversion: No

## 9 Floor 2 - Hall



Dimensions: 23'1" x 3'2"  
Area: 95 sq. ft  
Counted as living area: Yes

Heated: Yes  
Finished: Yes  
Enclosed: Yes  
Contiguous: Yes  
Permitted: Yes  
Wet space: No  
Addition: No  
Conversion: No

## 10 Floor 2 - Kitchen



Dimensions: 10'2" x 12'1"  
Area: 120 sq. ft  
Counted as living area: Yes

Heated: Yes  
Finished: Yes  
Enclosed: Yes  
Contiguous: Yes  
Permitted: Yes  
Wet space: No  
Addition: No  
Conversion: No

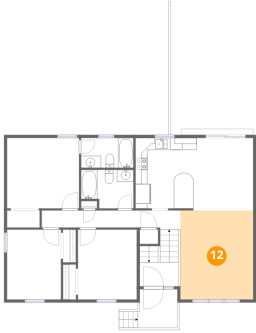
## 11 Floor 2 - Primary Bedroom



Dimensions: 12'0" x 11'8"  
Area: 141 sq. ft  
Counted as living area: Yes

Heated: Yes  
Finished: Yes  
Enclosed: Yes  
Contiguous: Yes  
Permitted: Yes  
Wet space: No  
Addition: No  
Conversion: No

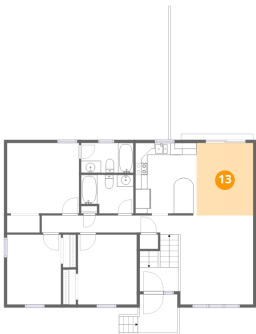
## 12 Floor 2 - Living Room



Dimensions: 12'2" x 14'10"  
Area: 180 sq. ft  
Counted as living area: Yes

Heated: Yes  
Finished: Yes  
Enclosed: Yes  
Contiguous: Yes  
Permitted: Yes  
Wet space: No  
Addition: No  
Conversion: No

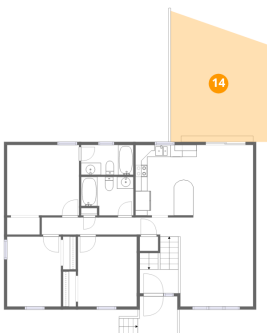
## 13 Floor 2 - Dining Area



Dimensions: 9'5" x 12'1"  
Area: 114 sq. ft  
Counted as living area: Yes

Heated: Yes  
Finished: Yes  
Enclosed: Yes  
Contiguous: Yes  
Permitted: Yes  
Wet space: No  
Addition: No  
Conversion: No

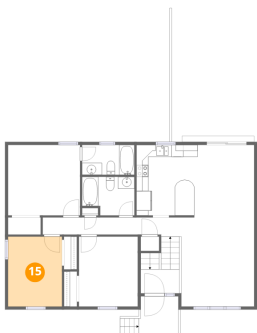
## 14 Floor 2 - Patio



Dimensions: 16'2" x 21'9"  
Area: 308 sq. ft  
Counted as living area: No

Heated: No  
Finished: No  
Enclosed: No  
Contiguous: Yes  
Permitted: Yes  
Wet space: No  
Addition: No  
Conversion: No

### 15 Floor 2 - Bedroom



Dimensions: 9'0" x 11'8"  
Area: 105 sq. ft  
Counted as living area: Yes

Heated: Yes  
Finished: Yes  
Enclosed: Yes  
Contiguous: Yes  
Permitted: Yes  
Wet space: No  
Addition: No  
Conversion: No

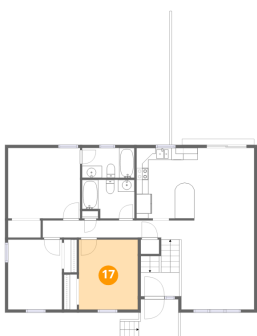
### 16 Floor 2 - Bath



Dimensions: 8'9" x 5'0"  
Area: 43 sq. ft  
Counted as living area: Yes

Heated: Yes  
Finished: Yes  
Enclosed: Yes  
Contiguous: Yes  
Permitted: Yes  
Wet space: Yes  
Addition: No  
Conversion: No

### 17 Floor 2 - Bedroom



Dimensions: 9'10" x 11'8"  
Area: 114 sq. ft  
Counted as living area: Yes

Heated: Yes  
Finished: Yes  
Enclosed: Yes  
Contiguous: Yes  
Permitted: Yes  
Wet space: No  
Addition: No  
Conversion: No

Home data report

742 Pitt Avenue, Vinton, Roanoke County, Virginia, United States, 24179

**18** Floor 2 - Bath



Dimensions: 8'9" x 6'5"  
Area: 51 sq. ft  
Counted as living area: Yes

Heated: Yes  
Finished: Yes  
Enclosed: Yes  
Contiguous: Yes  
Permitted: Yes  
Wet space: Yes  
Addition: No  
Conversion: No