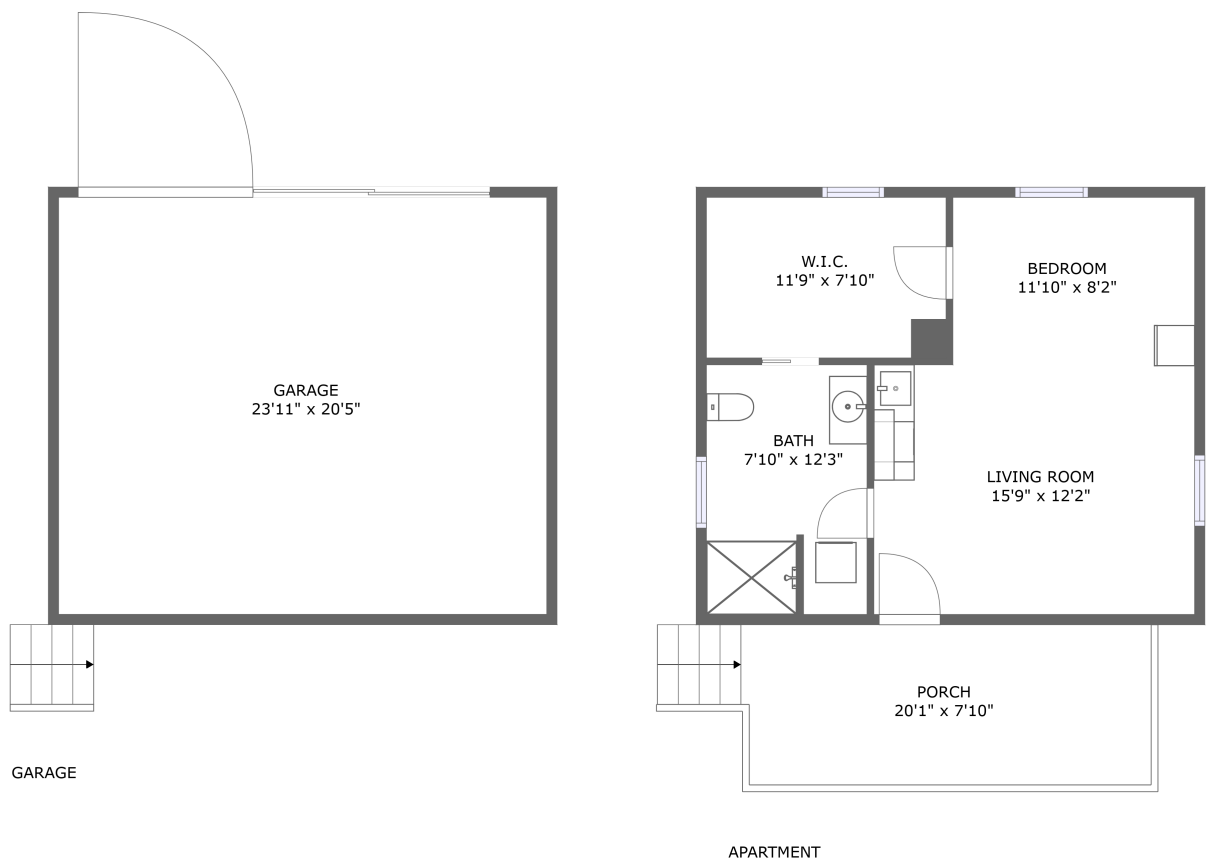


Home report

1103 McCormick Boulevard, Carriage House, Clifton Forge, Virginia, United States, Carriage House




**Total Area: 489 sq. ft**  
Floor 1: 0 sq. ft, Floor 2: 489 sq. ft  
Excluded: Garage 489 sq. ft, Porch 156 sq. ft, Walls: 90 sq. ft

Property summary

 **2** Floors

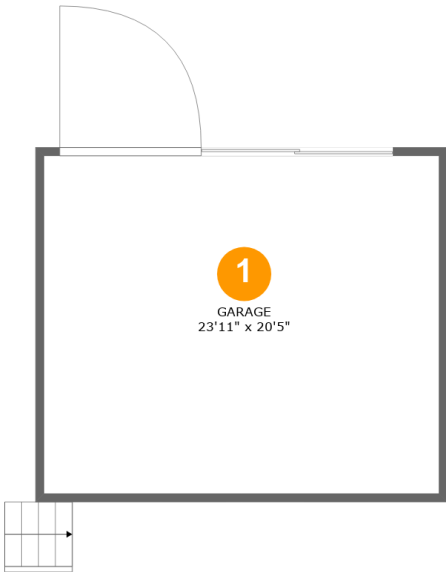
 **1** Bedrooms

 **1** Bathrooms

 **1** Garages

Home report

1103 McCormick Boulevard, Carriage House, Clifton Forge, Virginia, United States, Carriage House



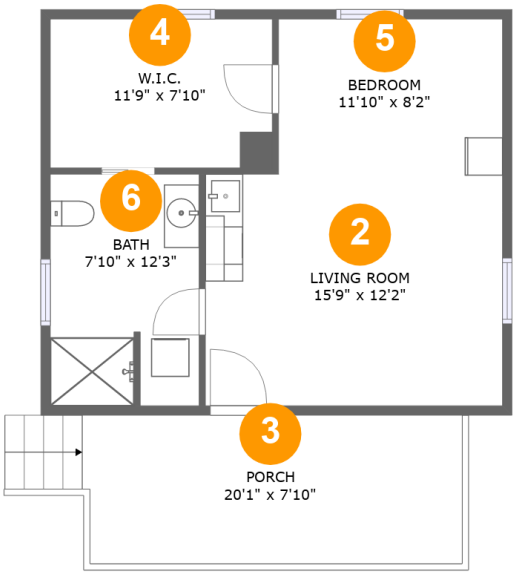
Room dimensions

Floor 1 Total:0sqft   Excluded: 489sqft

#		Max Dimensions	sqft	Included
1	Garage	23'11" x 20'5"	489 sq. ft	No

Home report

1103 McCormick Boulevard, Carriage House, Clifton Forge, Virginia, United States, Carriage House

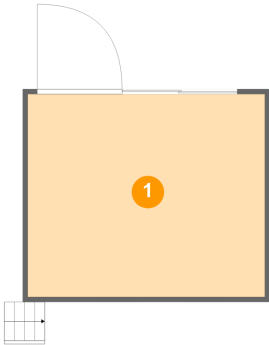


Room dimensions

Floor 2 Total:489sqft Excluded: 156sqft

#		Max Dimensions	sqft	Included
2	Living Room	15'9" x 12'2"	192 sq. ft	Yes
3	Porch	20'1" x 7'10"	156 sq. ft	No
4	W.I.C.	11'9" x 7'10"	92 sq. ft	Yes
5	Bedroom	11'10" x 8'2"	97 sq. ft	Yes
6	Bath	7'10" x 12'3"	95 sq. ft	Yes

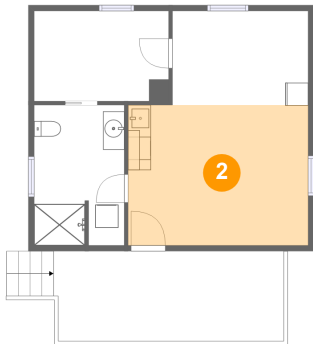
1 Floor 1 - Garage



Max Dimensions: 23'11" x 20'5"  
Calculated Area: 489 sq. ft  
Included: No

Heated: No  
Finished: No  
Enclosed: Yes  
Contiguous: Yes  
Permitted: Yes  
Wet space: No  
Addition: No  
Conversion: No

2 Floor 2 - Living Room

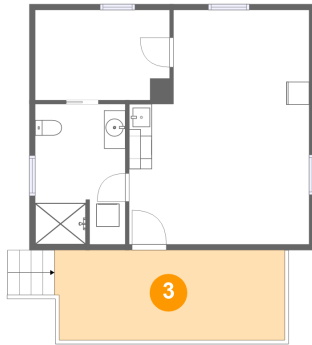


Max Dimensions: 15'9" x 12'2"  
Calculated Area: 192 sq. ft  
Included: Yes

Heated: Yes  
Finished: Yes  
Enclosed: Yes  
Contiguous: Yes  
Permitted: Yes  
Wet space: No  
Addition: No  
Conversion: No

1103 McCormick Boulevard, Carriage House, Clifton Forge, Virginia, United States, Carriage House

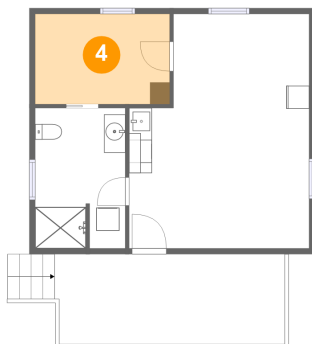
3 Floor 2 - Porch



Max Dimensions: 20'1" x 7'10"  
Calculated Area: 156 sq. ft  
Included: No

Heated: No  
Finished: Yes  
Enclosed: No  
Contiguous: Yes  
Permitted: Yes  
Wet space: No  
Addition: No  
Conversion: No

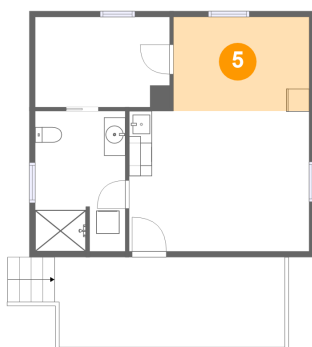
4 Floor 2 - W.I.C.



Max Dimensions: 11'9" x 7'10"  
Calculated Area: 92 sq. ft  
Included: Yes

Heated: Yes  
Finished: Yes  
Enclosed: Yes  
Contiguous: Yes  
Permitted: Yes  
Wet space: No  
Addition: No  
Conversion: No

5 Floor 2 - Bedroom

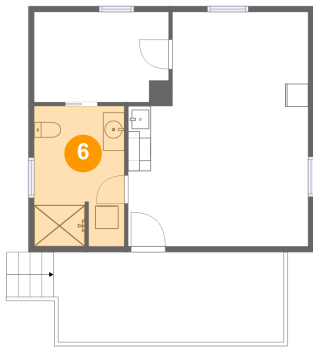


Max Dimensions: 11'10" x 8'2"  
Calculated Area: 97 sq. ft  
Included: Yes

Heated: Yes  
Finished: Yes  
Enclosed: Yes  
Contiguous: Yes  
Permitted: Yes  
Wet space: No  
Addition: No  
Conversion: No

1103 McCormick Boulevard, Carriage House, Clifton Forge, Virginia, United States, Carriage House

6 Floor 2 - Bath



Max Dimensions: 7'10" x 12'3"  
Calculated Area: 95 sq. ft  
Included: Yes

Heated: Yes  
Finished: Yes  
Enclosed: Yes  
Contiguous: Yes  
Permitted: Yes  
Wet space: Yes  
Addition: No  
Conversion: No