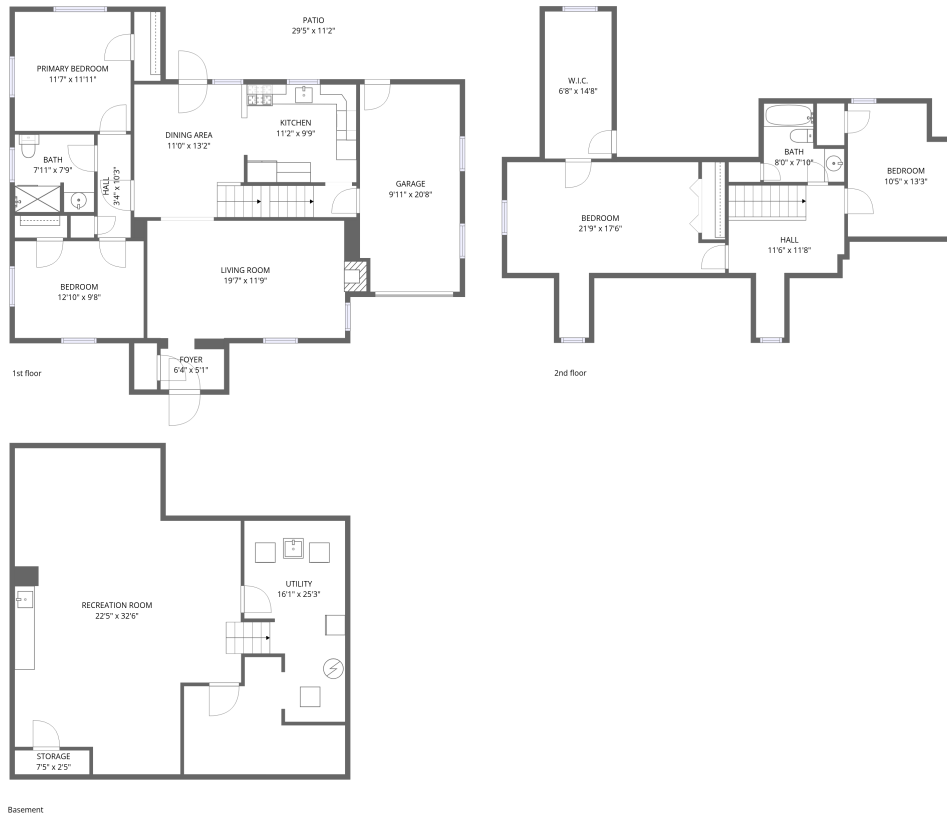


Home data report

4628 Sherwood Dr, Pittsburgh, PA, US



Total Area: 2302 sq. ft

Basement: 611 sq. ft, 1st Floor: 1004 sq. ft, 2nd Floor: 687 sq. ft

Excluded: Storage 18 sq. ft, Utility 306 sq. ft, Garage 202 sq. ft, Patio 331 sq. ft, Fireplace 6 sq. ft, Walls: 243 sq. ft

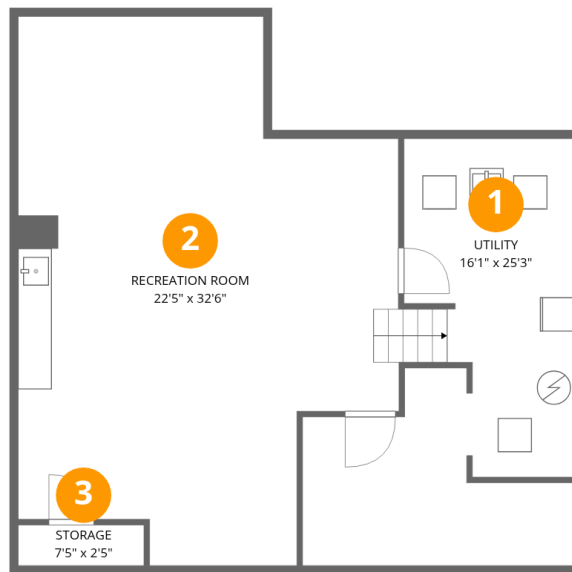
Property summary

 **3** Floors

 **4** Bedrooms

 **2** Bathrooms

 **1** Garages



Room dimensions

Floor 1 Below grade

Total:611sqft

Excluded: 324sqft

| # | | Dimensions | sqft | Counted as living area |
|---|-----------------|---------------|------------|------------------------|
| 1 | Utility | 16'1" x 25'3" | 405 sq. ft | No |
| 2 | Recreation Room | 22'5" x 32'6" | 729 sq. ft | Yes |
| 3 | Storage | 7'5" x 2'5" | 18 sq. ft | No |



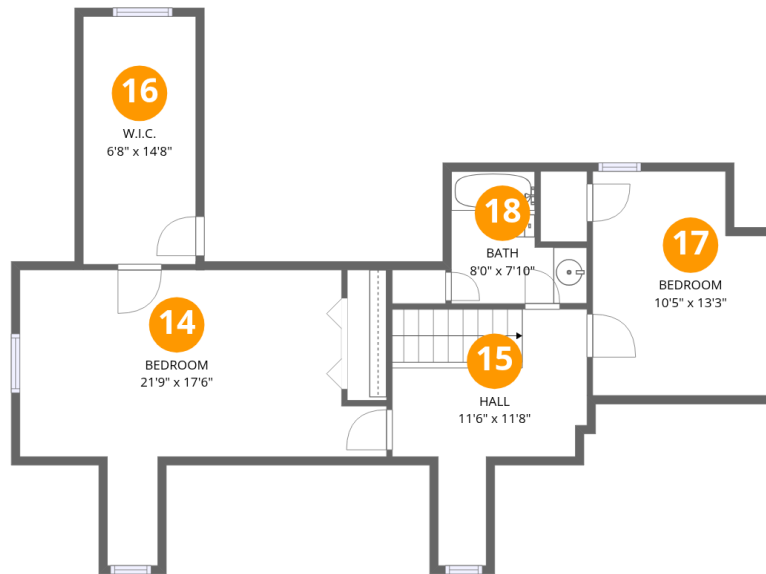
Room dimensions

Floor 2

Total: 1004 sqft

Excluded: 539 sqft

| # | | Dimensions | sqft | Counted as living area |
|----|-----------------|----------------|------------|------------------------|
| 4 | Patio | 29'5" x 11'2" | 328 sq. ft | No |
| 5 | Bedroom | 12'10" x 9'8" | 124 sq. ft | Yes |
| 6 | Dining Area | 11'0" x 13'2" | 145 sq. ft | Yes |
| 7 | Living Room | 19'7" x 11'9" | 230 sq. ft | Yes |
| 8 | Primary Bedroom | 11'7" x 11'11" | 137 sq. ft | Yes |
| 9 | Foyer | 6'4" x 5'1" | 32 sq. ft | Yes |
| 10 | Hall | 3'4" x 10'3" | 34 sq. ft | Yes |
| 11 | Kitchen | 11'2" x 9'9" | 109 sq. ft | Yes |
| 12 | Bath | 7'11" x 7'9" | 61 sq. ft | Yes |
| 13 | Garage | 9'11" x 20'8" | 206 sq. ft | No |



Room dimensions

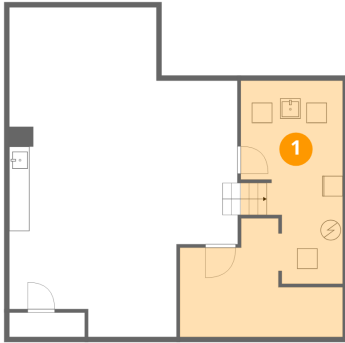
Floor 3

Total:687sqft

Excluded: 0sqft

| # | | Dimensions | sqft | Counted as living area |
|----|---------|---------------|------------|------------------------|
| 14 | Bedroom | 21'9" x 17'6" | 380 sq. ft | Yes |
| 15 | Hall | 11'6" x 11'8" | 134 sq. ft | Yes |
| 16 | W.I.C. | 6'8" x 14'8" | 98 sq. ft | Yes |
| 17 | Bedroom | 10'5" x 13'3" | 138 sq. ft | Yes |
| 18 | Bath | 8'0" x 7'10" | 63 sq. ft | Yes |

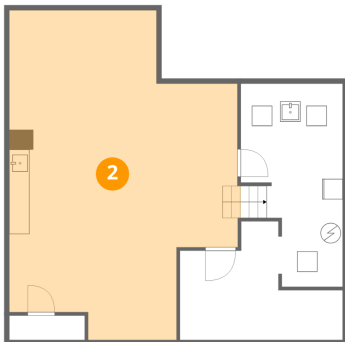
1 Floor 1 - Utility



Dimensions: 16'1" x 25'3"
Area: 405 sq. ft
Counted as living area: No

Heated: Yes
Finished: No
Enclosed: Yes
Contiguous: Yes
Permitted: Yes
Wet space: No
Addition: No
Conversion: No

2 Floor 1 - Recreation Room



Dimensions: 22'5" x 32'6"
Area: 729 sq. ft
Counted as living area: No

Heated: Yes
Finished: Yes
Enclosed: Yes
Contiguous: No
Permitted: Yes
Wet space: No
Addition: No
Conversion: No

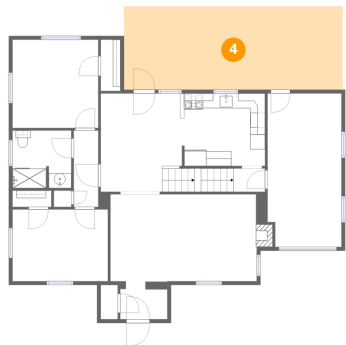
3 Floor 1 - Storage



Dimensions: 7'5" x 2'5"
Area: 18 sq. ft
Counted as living area: No

Heated: No
Finished: No
Enclosed: No
Contiguous: Yes
Permitted: Yes
Wet space: No
Addition: No
Conversion: No

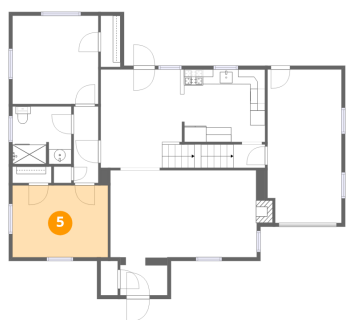
4 Floor 2 - Patio



Dimensions: 29'5" x 11'2"
Area: 328 sq. ft
Counted as living area: No

Heated: No
Finished: No
Enclosed: No
Contiguous: Yes
Permitted: Yes
Wet space: No
Addition: No
Conversion: No

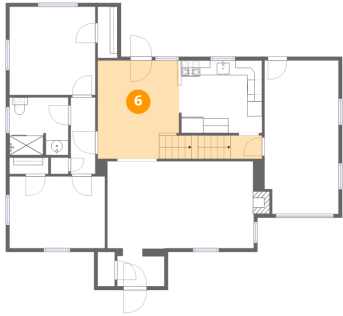
5 Floor 2 - Bedroom



Dimensions: 12'10" x 9'8"
Area: 124 sq. ft
Counted as living area: Yes

Heated: Yes
Finished: Yes
Enclosed: Yes
Contiguous: Yes
Permitted: Yes
Wet space: No
Addition: No
Conversion: No

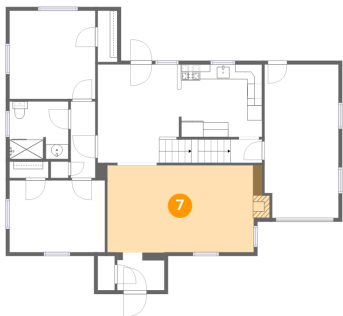
6 Floor 2 - Dining Area



Dimensions: 11'0" x 13'2"
Area: 145 sq. ft
Counted as living area: Yes

Heated: Yes
Finished: Yes
Enclosed: Yes
Contiguous: Yes
Permitted: Yes
Wet space: No
Addition: No
Conversion: No

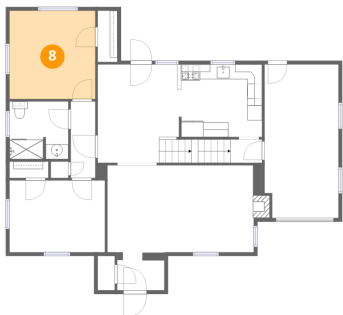
7 Floor 2 - Living Room



Dimensions: 19'7" x 11'9"
Area: 230 sq. ft
Counted as living area: Yes

Heated: Yes
Finished: Yes
Enclosed: Yes
Contiguous: Yes
Permitted: Yes
Wet space: No
Addition: No
Conversion: No

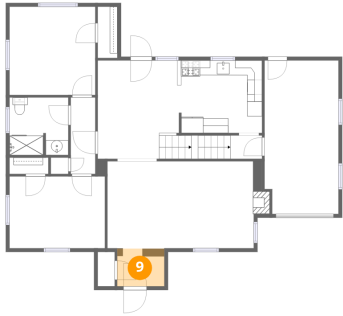
8 Floor 2 - Primary Bedroom



Dimensions: 11'7" x 11'11"
Area: 137 sq. ft
Counted as living area: Yes

Heated: Yes
Finished: Yes
Enclosed: Yes
Contiguous: Yes
Permitted: Yes
Wet space: No
Addition: No
Conversion: No

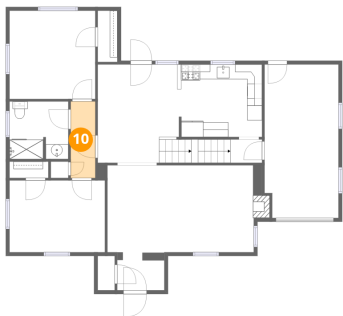
9 Floor 2 - Foyer



Dimensions: 6'4" x 5'1"
Area: 32 sq. ft
Counted as living area: Yes

Heated: Yes
Finished: Yes
Enclosed: Yes
Contiguous: Yes
Permitted: Yes
Wet space: No
Addition: No
Conversion: No

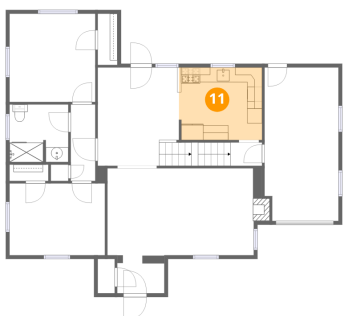
10 Floor 2 - Hall



Dimensions: 3'4" x 10'3"
Area: 34 sq. ft
Counted as living area: Yes

Heated: Yes
Finished: Yes
Enclosed: Yes
Contiguous: Yes
Permitted: Yes
Wet space: No
Addition: No
Conversion: No

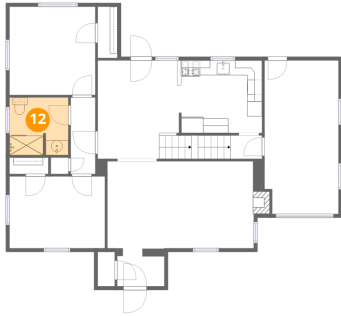
11 Floor 2 - Kitchen



Dimensions: 11'2" x 9'9"
Area: 109 sq. ft
Counted as living area: Yes

Heated: Yes
Finished: Yes
Enclosed: Yes
Contiguous: Yes
Permitted: Yes
Wet space: No
Addition: No
Conversion: No

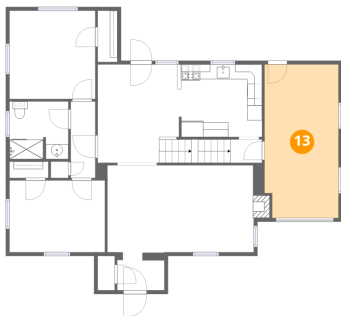
12 Floor 2 - Bath



Dimensions: 7'11" x 7'9"
Area: 61 sq. ft
Counted as living area: Yes

Heated: Yes
Finished: Yes
Enclosed: Yes
Contiguous: Yes
Permitted: Yes
Wet space: Yes
Addition: No
Conversion: No

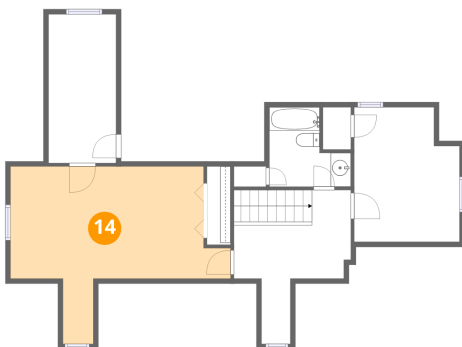
13 Floor 2 - Garage



Dimensions: 9'11" x 20'8"
Area: 206 sq. ft
Counted as living area: No

Heated: No
Finished: No
Enclosed: Yes
Contiguous: Yes
Permitted: Yes
Wet space: No
Addition: No
Conversion: No

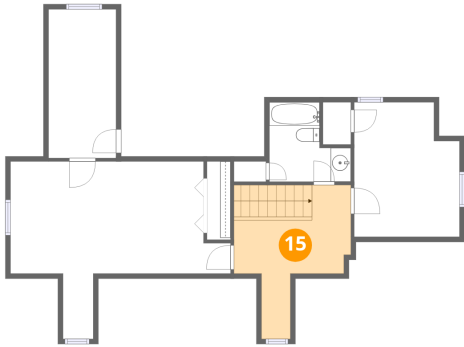
14 Floor 3 - Bedroom



Dimensions: 21'9" x 17'6"
Area: 380 sq. ft
Counted as living area: Yes

Heated: Yes
Finished: Yes
Enclosed: Yes
Contiguous: Yes
Permitted: Yes
Wet space: No
Addition: No
Conversion: No

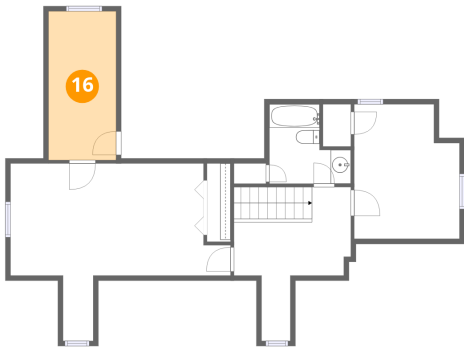
15 Floor 3 - Hall



Dimensions: 11'6" x 11'8"
Area: 134 sq. ft
Counted as living area: Yes

Heated: Yes
Finished: Yes
Enclosed: Yes
Contiguous: Yes
Permitted: Yes
Wet space: No
Addition: No
Conversion: No

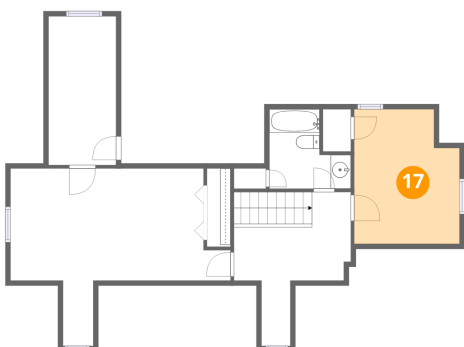
16 Floor 3 - W.I.C.



Dimensions: 6'8" x 14'8"
Area: 98 sq. ft
Counted as living area: Yes

Heated: Yes
Finished: Yes
Enclosed: Yes
Contiguous: Yes
Permitted: Yes
Wet space: No
Addition: No
Conversion: No

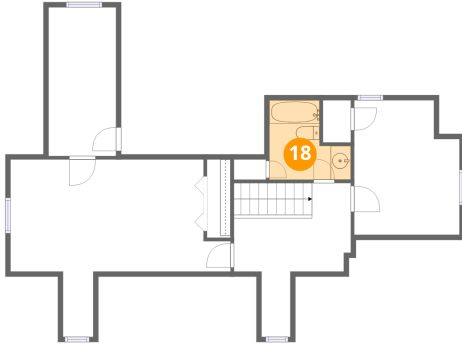
17 Floor 3 - Bedroom



Dimensions: 10'5" x 13'3"
Area: 138 sq. ft
Counted as living area: Yes

Heated: Yes
Finished: Yes
Enclosed: Yes
Contiguous: Yes
Permitted: Yes
Wet space: No
Addition: No
Conversion: No

18 Floor 3 - Bath



Dimensions: 8'0" x 7'10"
Area: 63 sq. ft
Counted as living area: Yes

Heated: Yes
Finished: Yes
Enclosed: Yes
Contiguous: Yes
Permitted: Yes
Wet space: Yes
Addition: No
Conversion: No