

# 5915 Wacker Dr,Stevensville,MI,US



## Total Area: 2946 sq. ft

Basement: 494 sq. ft, 1st Floor: 1048 sq. ft, 2nd Floor: 1404 sq. ft

Excluded: Utility 257 sq. ft, Bedroom 286 sq. ft, Garage 541 sq. ft, Deck 212 sq. ft, Fireplace 11 sq. ft, Open to below 52 sq. ft, Walls: 268 sq. ft

## Property summary



Home data report

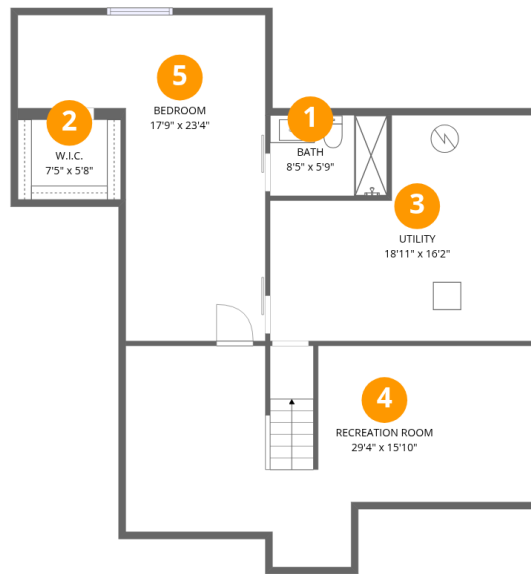
# 5915 Wacker Dr,Stevensville,MI,US



**1**  
Half baths



**1**  
Garages



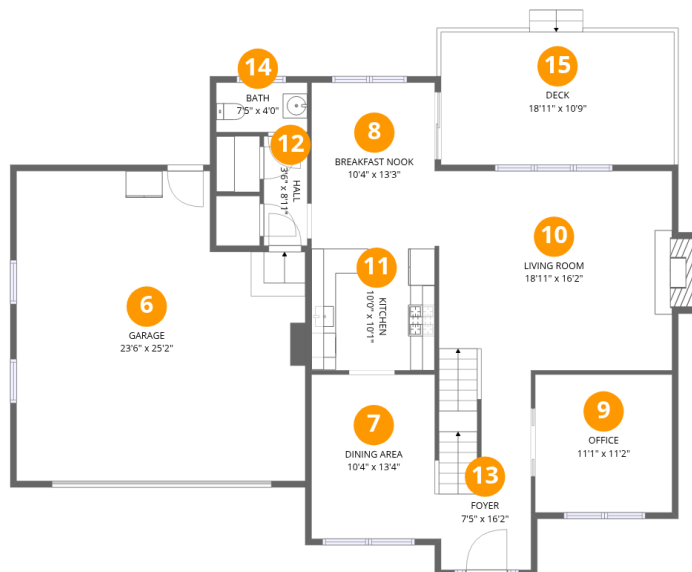
## Room dimensions

Floor 1 Below grade

Total:494sqft

Excluded: 543sqft

#		Dimensions	sqft	Counted as living area
1	Bath	8'5" x 5'9"	48 sq. ft	Yes
2	W.I.C.	7'5" x 5'8"	42 sq. ft	Yes
3	Utility	18'11" x 16'2"	305 sq. ft	No
4	Recreation Room	29'4" x 15'10"	465 sq. ft	Yes
5	Bedroom	17'9" x 23'4"	414 sq. ft	No



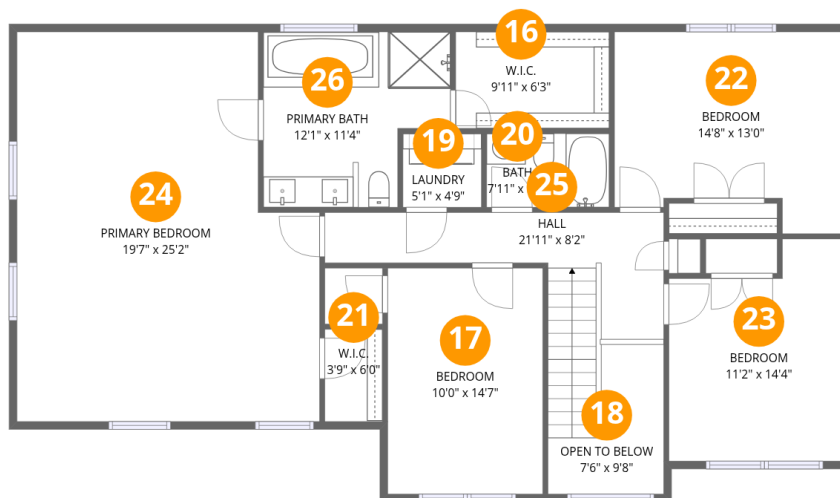
## Room dimensions

Floor 2

Total:1048sqft

Excluded: 764sqft

#		Dimensions	sqft	Counted as living area
6	Garage	23'6" x 25'2"	591 sq. ft	No
7	Dining Area	10'4" x 13'4"	138 sq. ft	Yes
8	Breakfast Nook	10'4" x 13'3"	137 sq. ft	Yes
9	Office	11'1" x 11'2"	124 sq. ft	Yes
10	Living Room	18'11" x 16'2"	307 sq. ft	Yes
11	Kitchen	10'0" x 10'1"	101 sq. ft	Yes
12	Hall	3'6" x 8'11"	31 sq. ft	Yes
13	Foyer	7'5" x 16'2"	121 sq. ft	Yes
14	Bath	7'5" x 4'0"	30 sq. ft	Yes
15	Deck	18'11" x 10'9"	204 sq. ft	No



## Room dimensions

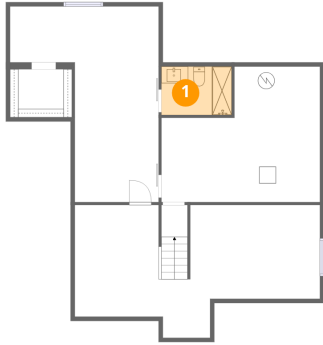
Floor 3

Total:1404sqft Excluded: 52sqft

#		Dimensions	sqft	Counted as living area
16	W.I.C.	9'11" x 6'3"	62 sq. ft	Yes
17	Bedroom	10'0" x 14'7"	146 sq. ft	Yes
18	Open To Below	7'6" x 9'8"	72 sq. ft	No
19	Laundry	5'1" x 4'9"	24 sq. ft	Yes
20	Bath	7'11" x 4'9"	38 sq. ft	Yes
21	W.I.C.	3'9" x 6'0"	22 sq. ft	Yes
22	Bedroom	14'8" x 13'0"	191 sq. ft	Yes
23	Bedroom	11'2" x 14'4"	160 sq. ft	Yes
24	Primary Bedroom	19'7" x 25'2"	493 sq. ft	Yes
25	Hall	21'11" x 8'2"	179 sq. ft	Yes
26	Primary Bath	12'1" x 11'4"	137 sq. ft	Yes

**1** Floor 1 - Bath

---

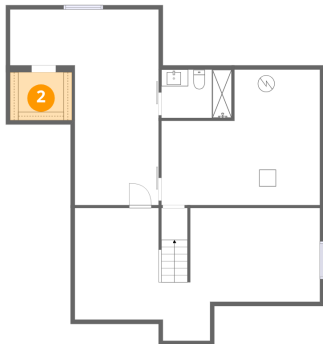


Dimensions: 8'5" x 5'9"  
Area: 48 sq. ft  
Counted as living area: No

Heated: Yes  
Finished: Yes  
Enclosed: Yes  
Contiguous: No  
Permitted: Yes  
Wet space: Yes  
Addition: No  
Conversion: No

**2** Floor 1 - W.I.C.

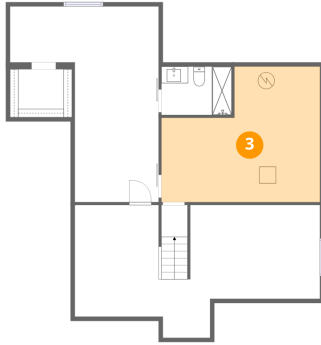
---



Dimensions: 7'5" x 5'8"  
Area: 42 sq. ft  
Counted as living area: No

Heated: Yes  
Finished: Yes  
Enclosed: Yes  
Contiguous: No  
Permitted: Yes  
Wet space: No  
Addition: No  
Conversion: No

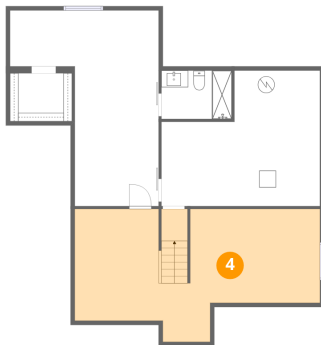
### 3 Floor 1 - Utility



Dimensions: 18'11" x 16'2"  
Area: 305 sq. ft  
Counted as living area: No

Heated: Yes  
Finished: No  
Enclosed: Yes  
Contiguous: Yes  
Permitted: Yes  
Wet space: No  
Addition: No  
Conversion: No

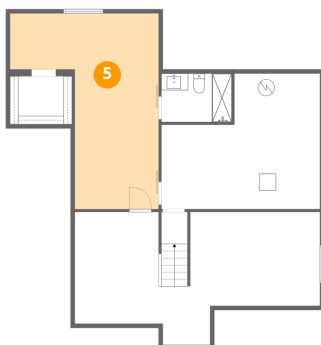
### 4 Floor 1 - Recreation Room



Dimensions: 29'4" x 15'10"  
Area: 465 sq. ft  
Counted as living area: Yes

Heated: Yes  
Finished: Yes  
Enclosed: Yes  
Contiguous: Yes  
Permitted: Yes  
Wet space: No  
Addition: No  
Conversion: No

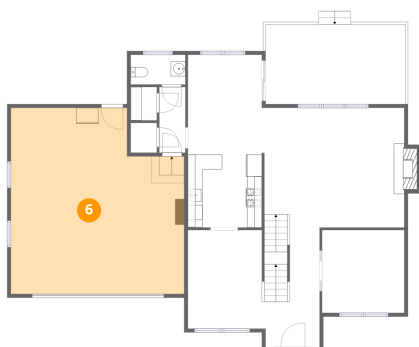
### 5 Floor 1 - Bedroom



Dimensions: 17'9" x 23'4"  
Area: 414 sq. ft  
Counted as living area: No

Heated: Yes  
Finished: No  
Enclosed: Yes  
Contiguous: Yes  
Permitted: Yes  
Wet space: No  
Addition: No  
Conversion: No

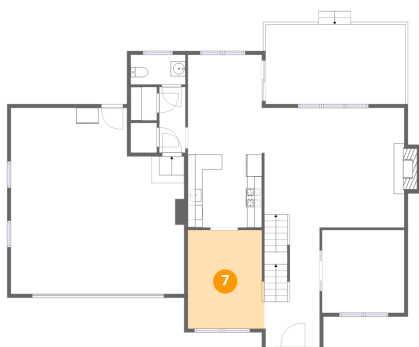
## 6 Floor 2 - Garage



Dimensions: 23'6" x 25'2"  
Area: 591 sq. ft  
Counted as living area: No

Heated: No  
Finished: No  
Enclosed: Yes  
Contiguous: Yes  
Permitted: Yes  
Wet space: No  
Addition: No  
Conversion: No

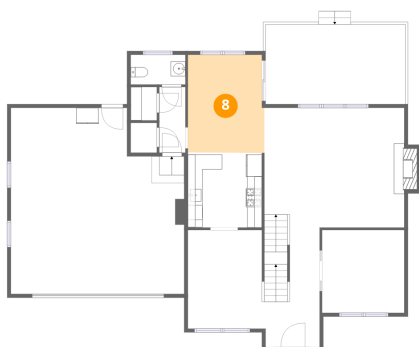
## 7 Floor 2 - Dining Area



Dimensions: 10'4" x 13'4"  
Area: 138 sq. ft  
Counted as living area: Yes

Heated: Yes  
Finished: Yes  
Enclosed: Yes  
Contiguous: Yes  
Permitted: Yes  
Wet space: No  
Addition: No  
Conversion: No

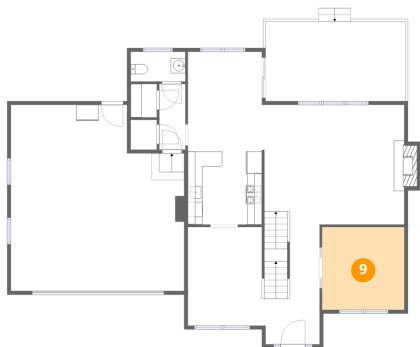
## 8 Floor 2 - Breakfast Nook



Dimensions: 10'4" x 13'3"  
Area: 137 sq. ft  
Counted as living area: Yes

Heated: Yes  
Finished: Yes  
Enclosed: Yes  
Contiguous: Yes  
Permitted: Yes  
Wet space: No  
Addition: No  
Conversion: No

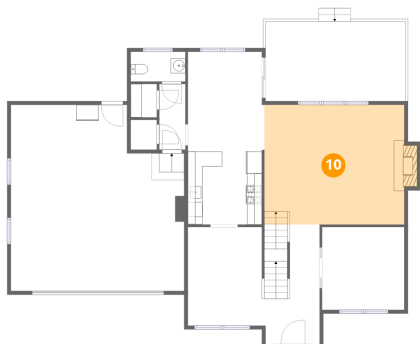
### 9 Floor 2 - Office



Dimensions: 11'1" x 11'2"  
Area: 124 sq. ft  
Counted as living area: Yes

Heated: Yes  
Finished: Yes  
Enclosed: Yes  
Contiguous: Yes  
Permitted: Yes  
Wet space: No  
Addition: No  
Conversion: No

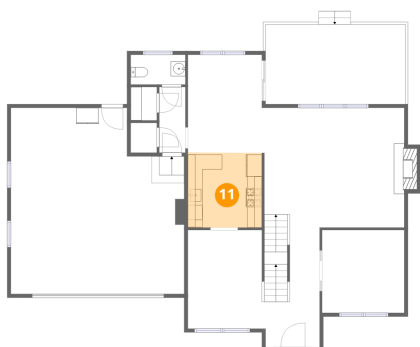
### 10 Floor 2 - Living Room



Dimensions: 18'11" x 16'2"  
Area: 307 sq. ft  
Counted as living area: Yes

Heated: Yes  
Finished: Yes  
Enclosed: Yes  
Contiguous: Yes  
Permitted: Yes  
Wet space: No  
Addition: No  
Conversion: No

### 11 Floor 2 - Kitchen



Dimensions: 10'0" x 10'1"  
Area: 101 sq. ft  
Counted as living area: Yes

Heated: Yes  
Finished: Yes  
Enclosed: Yes  
Contiguous: Yes  
Permitted: Yes  
Wet space: No  
Addition: No  
Conversion: No

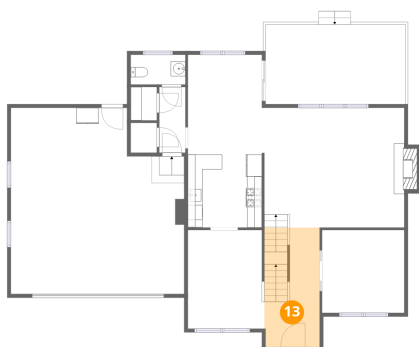
## 12 Floor 2 - Hall



Dimensions: 3'6" x 8'11"  
Area: 31 sq. ft  
Counted as living area: Yes

Heated: Yes  
Finished: Yes  
Enclosed: Yes  
Contiguous: Yes  
Permitted: Yes  
Wet space: No  
Addition: No  
Conversion: No

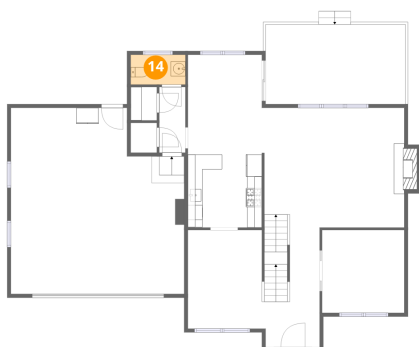
## 13 Floor 2 - Foyer



Dimensions: 7'5" x 16'2"  
Area: 121 sq. ft  
Counted as living area: Yes

Heated: Yes  
Finished: Yes  
Enclosed: Yes  
Contiguous: Yes  
Permitted: Yes  
Wet space: No  
Addition: No  
Conversion: No

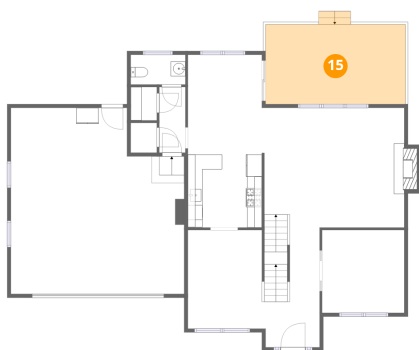
## 14 Floor 2 - Bath



Dimensions: 7'5" x 4'0"  
Area: 30 sq. ft  
Counted as living area: Yes

Heated: Yes  
Finished: Yes  
Enclosed: Yes  
Contiguous: Yes  
Permitted: Yes  
Wet space: Yes  
Addition: No  
Conversion: No

**15** Floor 2 - Deck



Dimensions: 18'11" x 10'9"

Area: 204 sq. ft

Counted as living area: No

Heated: No

Finished: No

Enclosed: No

Contiguous: Yes

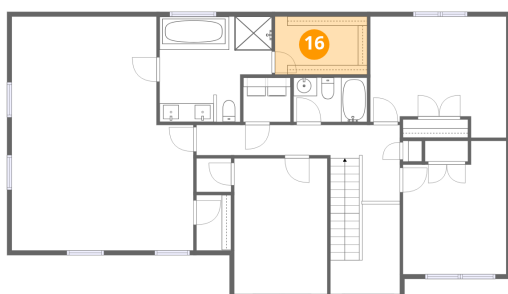
Permitted: Yes

Wet space: No

Addition: No

Conversion: No

**16** Floor 3 - W.I.C.



Dimensions: 9'11" x 6'3"

Area: 62 sq. ft

Counted as living area: Yes

Heated: Yes

Finished: Yes

Enclosed: Yes

Contiguous: Yes

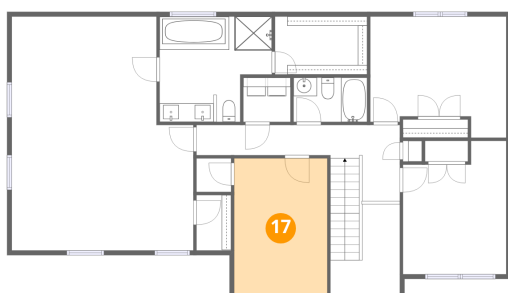
Permitted: Yes

Wet space: No

Addition: No

Conversion: No

**17** Floor 3 - Bedroom



Dimensions: 10'0" x 14'7"

Area: 146 sq. ft

Counted as living area: Yes

Heated: Yes

Finished: Yes

Enclosed: Yes

Contiguous: Yes

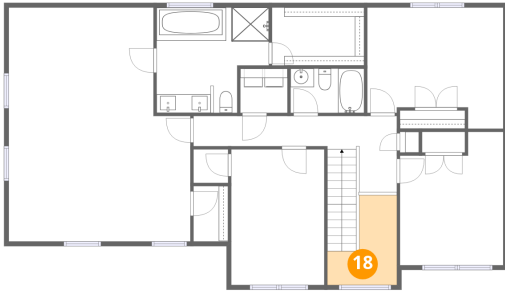
Permitted: Yes

Wet space: No

Addition: No

Conversion: No

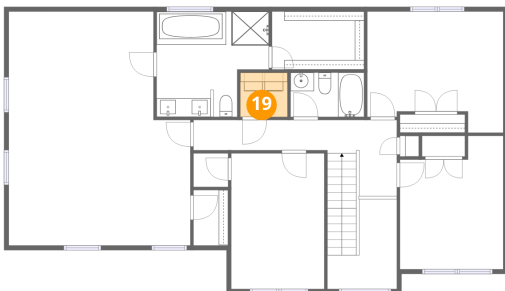
**18** Floor 3 - Open To Below



Dimensions: 7'6" x 9'8"  
Area: 72 sq. ft  
Counted as living area: No

Heated: No  
Finished: No  
Enclosed: No  
Contiguous: Yes  
Permitted: No  
Wet space: No  
Addition: No  
Conversion: No

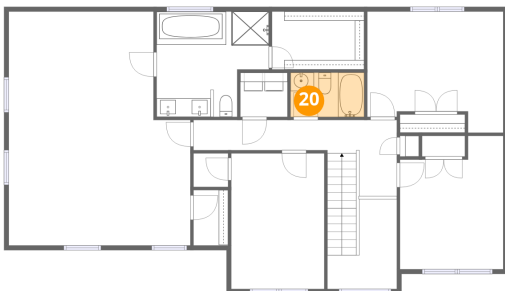
**19** Floor 3 - Laundry



Dimensions: 5'1" x 4'9"  
Area: 24 sq. ft  
Counted as living area: Yes

Heated: Yes  
Finished: Yes  
Enclosed: Yes  
Contiguous: Yes  
Permitted: Yes  
Wet space: No  
Addition: No  
Conversion: No

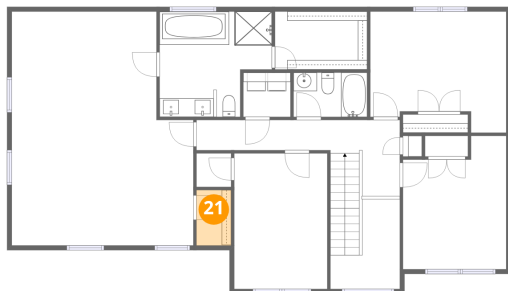
**20** Floor 3 - Bath



Dimensions: 7'11" x 4'9"  
Area: 38 sq. ft  
Counted as living area: Yes

Heated: Yes  
Finished: Yes  
Enclosed: Yes  
Contiguous: Yes  
Permitted: Yes  
Wet space: Yes  
Addition: No  
Conversion: No

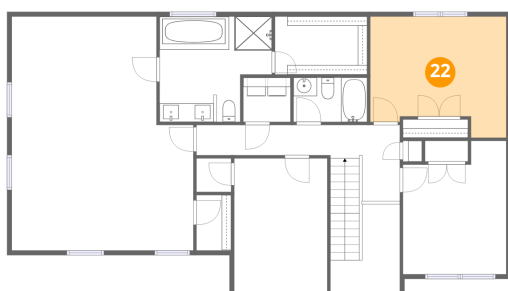
**21** Floor 3 - W.I.C.



Dimensions: 3'9" x 6'0"  
Area: 22 sq. ft  
Counted as living area: Yes

Heated: Yes  
Finished: Yes  
Enclosed: Yes  
Contiguous: Yes  
Permitted: Yes  
Wet space: No  
Addition: No  
Conversion: No

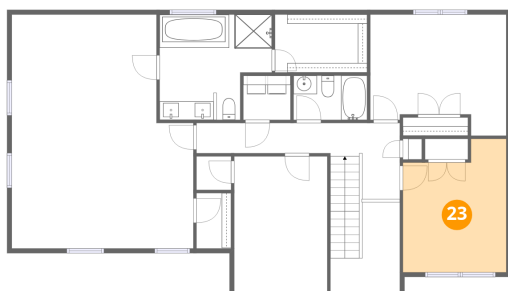
**22** Floor 3 - Bedroom



Dimensions: 14'8" x 13'0"  
Area: 191 sq. ft  
Counted as living area: Yes

Heated: Yes  
Finished: Yes  
Enclosed: Yes  
Contiguous: Yes  
Permitted: Yes  
Wet space: No  
Addition: No  
Conversion: No

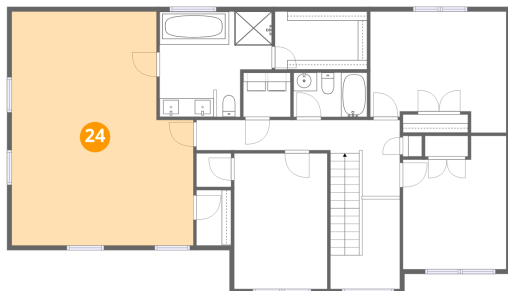
**23** Floor 3 - Bedroom



Dimensions: 11'2" x 14'4"  
Area: 160 sq. ft  
Counted as living area: Yes

Heated: Yes  
Finished: Yes  
Enclosed: Yes  
Contiguous: Yes  
Permitted: Yes  
Wet space: No  
Addition: No  
Conversion: No

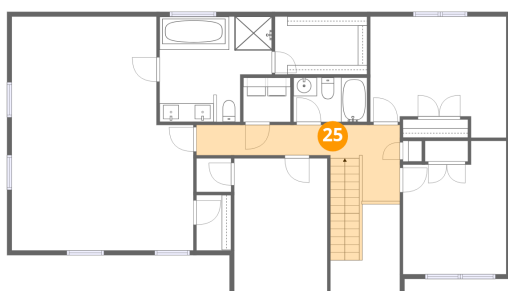
### 24 Floor 3 - Primary Bedroom



Dimensions: 19'7" x 25'2"  
Area: 493 sq. ft  
Counted as living area: Yes

Heated: Yes  
Finished: Yes  
Enclosed: Yes  
Contiguous: Yes  
Permitted: Yes  
Wet space: No  
Addition: No  
Conversion: No

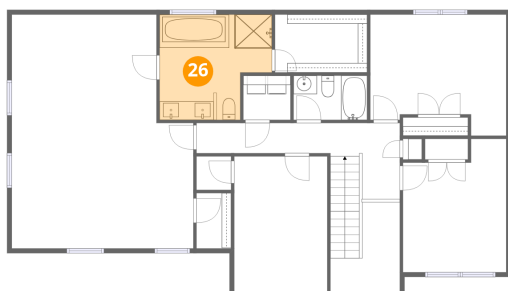
### 25 Floor 3 - Hall



Dimensions: 21'11" x 8'2"  
Area: 179 sq. ft  
Counted as living area: Yes

Heated: Yes  
Finished: Yes  
Enclosed: Yes  
Contiguous: Yes  
Permitted: Yes  
Wet space: No  
Addition: No  
Conversion: No

### 26 Floor 3 - Primary Bath



Dimensions: 12'1" x 11'4"  
Area: 137 sq. ft  
Counted as living area: Yes

Heated: Yes  
Finished: Yes  
Enclosed: Yes  
Contiguous: Yes  
Permitted: Yes  
Wet space: Yes  
Addition: No  
Conversion: No