


Home data report

1395 24th Avenue, Jamestown Charter Township, Hudsonville,
Ottawa County, Michigan, United States, 49426





Total Area: 1618 sq. ft
Below Ground: 655 sq. ft, Floor 2: 963 sq. ft
Excluded: Utility 214 sq. ft, Garage 563 sq. ft, Walls: 182 sq. ft

Property summary

 **2** Floors

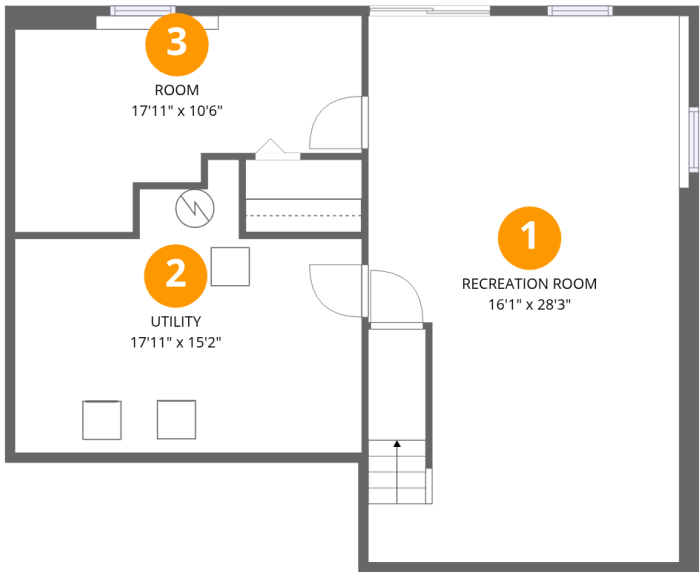
 **2** Bedrooms

 **1** Bathrooms

 **1** Garages

Home data report

1395 24th Avenue, Jamestown Charter Township, Hudsonville,
Ottawa County, Michigan, United States, 49426



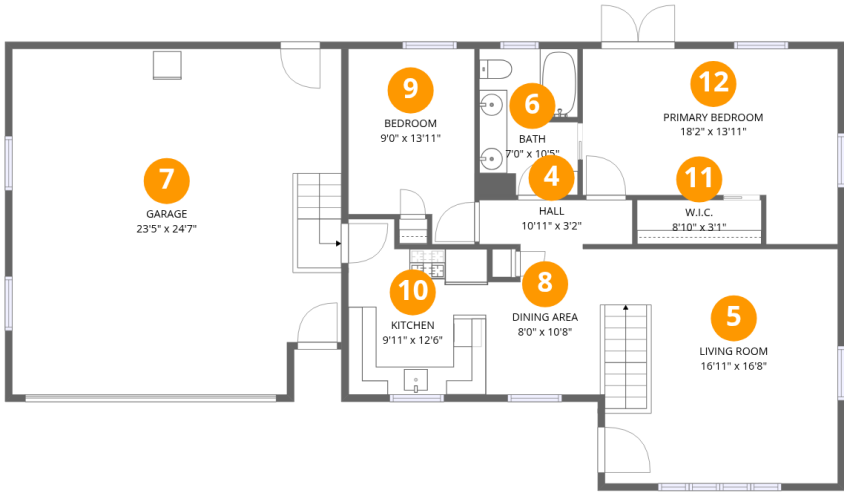
Room dimensions

Floor 1 Below grade Total:655sqft Excluded: 214sqft

#		Dimensions	sqft	Counted as living area
1	Recreation Room	16'1" x 28'3"	456 sq. ft	Yes
2	Utility	17'11" x 15'2"	214 sq. ft	No
3	Room	17'11" x 10'6"	155 sq. ft	Yes

Home data report

1395 24th Avenue, Jamestown Charter Township, Hudsonville,
Ottawa County, Michigan, United States, 49426

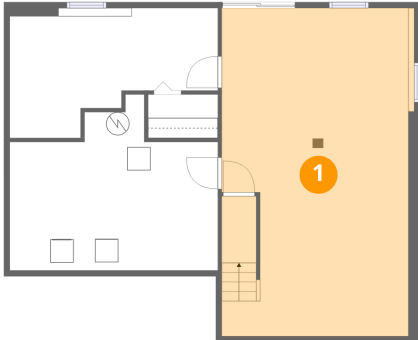


Room dimensions

Floor 2 Total:963sqft Excluded: 563sqft

#		Dimensions	sqft	Counted as living area
4	Hall	10'11" x 3'2"	34 sq. ft	Yes
5	Living Room	16'11" x 16'8"	281 sq. ft	Yes
6	Bath	7'0" x 10'5"	72 sq. ft	Yes
7	Garage	23'5" x 24'7"	563 sq. ft	No
8	Dining Area	8'0" x 10'8"	79 sq. ft	Yes
9	Bedroom	9'0" x 13'11"	112 sq. ft	Yes
10	Kitchen	9'11" x 12'6"	110 sq. ft	Yes
11	W.I.C.	8'10" x 3'1"	28 sq. ft	Yes
12	Primary Bedroom	18'2" x 13'11"	207 sq. ft	Yes

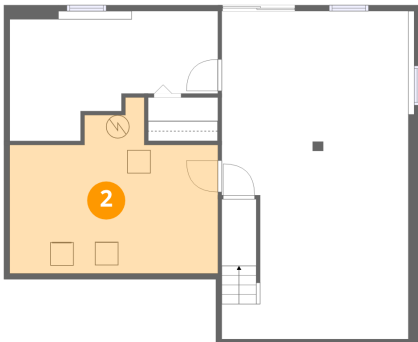
1 Floor 1 - Recreation Room



Dimensions: 16'1" x 28'3"
Area: 456 sq. ft
Counted as living area: Yes

Heated: Yes
Finished: Yes
Enclosed: Yes
Contiguous: Yes
Permitted: Yes
Wet space: No
Addition: No
Conversion: No

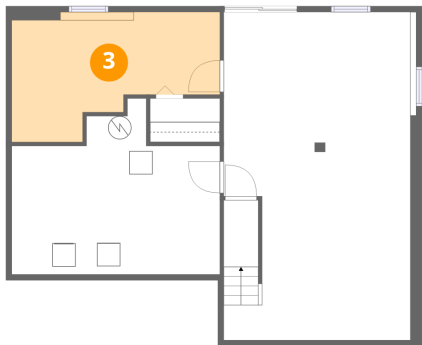
2 Floor 1 - Utility



Dimensions: 17'11" x 15'2"
Area: 214 sq. ft
Counted as living area: No

Heated: Yes
Finished: No
Enclosed: Yes
Contiguous: Yes
Permitted: Yes
Wet space: No
Addition: No
Conversion: No

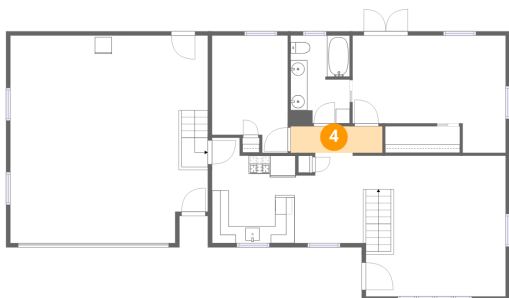
3 Floor 1 - Room



Dimensions: 17'11" x 10'6"
Area: 155 sq. ft
Counted as living area: Yes

Heated: Yes
Finished: Yes
Enclosed: Yes
Contiguous: Yes
Permitted: Yes
Wet space: No
Addition: No
Conversion: No

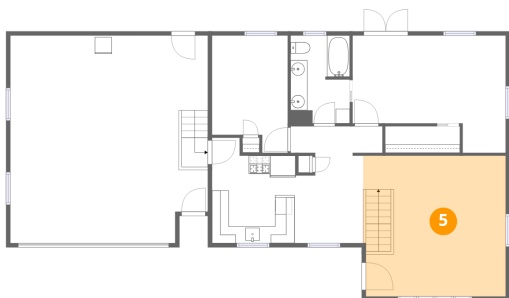
4 Floor 2 - Hall



Dimensions: 10'11" x 3'2"
Area: 34 sq. ft
Counted as living area: Yes

Heated: Yes
Finished: Yes
Enclosed: Yes
Contiguous: Yes
Permitted: Yes
Wet space: No
Addition: No
Conversion: No

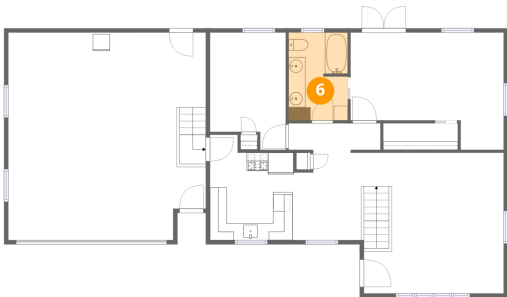
5 Floor 2 - Living Room



Dimensions: 16'11" x 16'8"
Area: 281 sq. ft
Counted as living area: Yes

Heated: Yes
Finished: Yes
Enclosed: Yes
Contiguous: Yes
Permitted: Yes
Wet space: No
Addition: No
Conversion: No

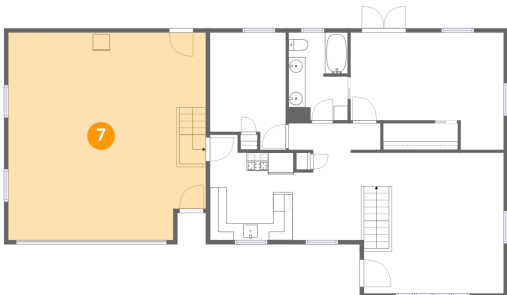
6 Floor 2 - Bath



Dimensions: 7'0" x 10'5"
Area: 72 sq. ft
Counted as living area: Yes

Heated: Yes
Finished: Yes
Enclosed: Yes
Contiguous: Yes
Permitted: Yes
Wet space: Yes
Addition: No
Conversion: No

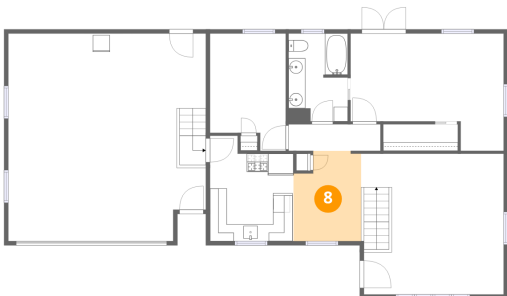
7 Floor 2 - Garage



Dimensions: 23'5" x 24'7"
Area: 563 sq. ft
Counted as living area: No

Heated: No
Finished: No
Enclosed: Yes
Contiguous: Yes
Permitted: Yes
Wet space: No
Addition: No
Conversion: No

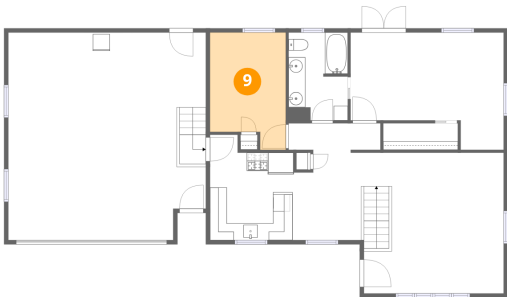
8 Floor 2 - Dining Area



Dimensions: 8'0" x 10'8"
Area: 79 sq. ft
Counted as living area: Yes

Heated: Yes
Finished: Yes
Enclosed: Yes
Contiguous: Yes
Permitted: Yes
Wet space: No
Addition: No
Conversion: No

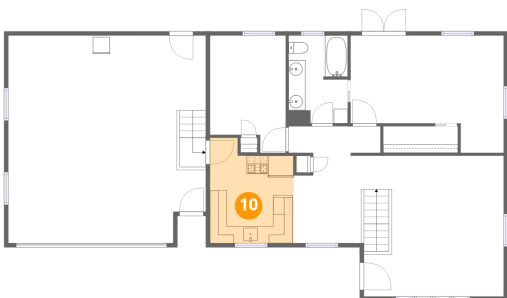
9 Floor 2 - Bedroom



Dimensions: 9'0" x 13'11"
Area: 112 sq. ft
Counted as living area: Yes

Heated: Yes
Finished: Yes
Enclosed: Yes
Contiguous: Yes
Permitted: Yes
Wet space: No
Addition: No
Conversion: No

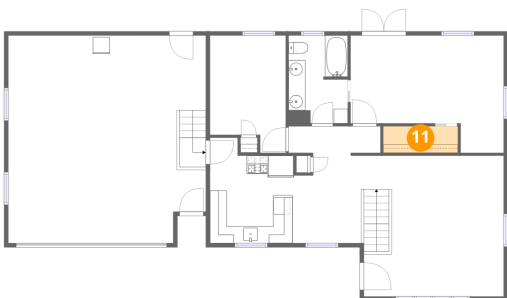
10 Floor 2 - Kitchen



Dimensions: 9'11" x 12'6"
Area: 110 sq. ft
Counted as living area: Yes

Heated: Yes
Finished: Yes
Enclosed: Yes
Contiguous: Yes
Permitted: Yes
Wet space: No
Addition: No
Conversion: No

11 Floor 2 - W.I.C.



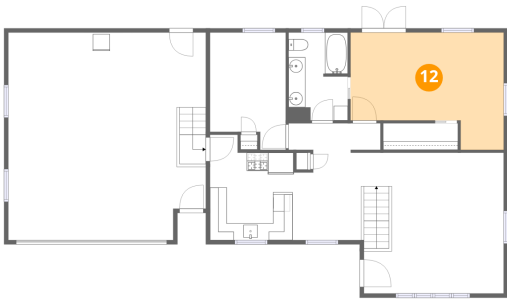
Dimensions: 8'10" x 3'1"
Area: 28 sq. ft
Counted as living area: Yes

Heated: Yes
Finished: Yes
Enclosed: Yes
Contiguous: Yes
Permitted: Yes
Wet space: No
Addition: No
Conversion: No

Home data report

1395 24th Avenue, Jamestown Charter Township, Hudsonville,
Ottawa County, Michigan, United States, 49426

12 Floor 2 - Primary Bedroom



Dimensions: 18'2" x 13'11"
Area: 207 sq. ft
Counted as living area: Yes

Heated: Yes
Finished: Yes
Enclosed: Yes
Contiguous: Yes
Permitted: Yes
Wet space: No
Addition: No
Conversion: No