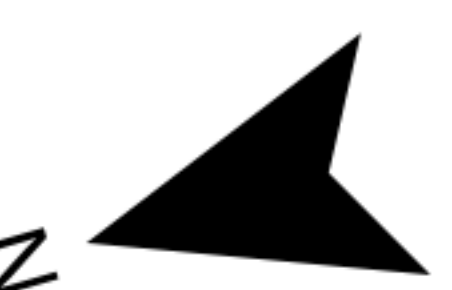


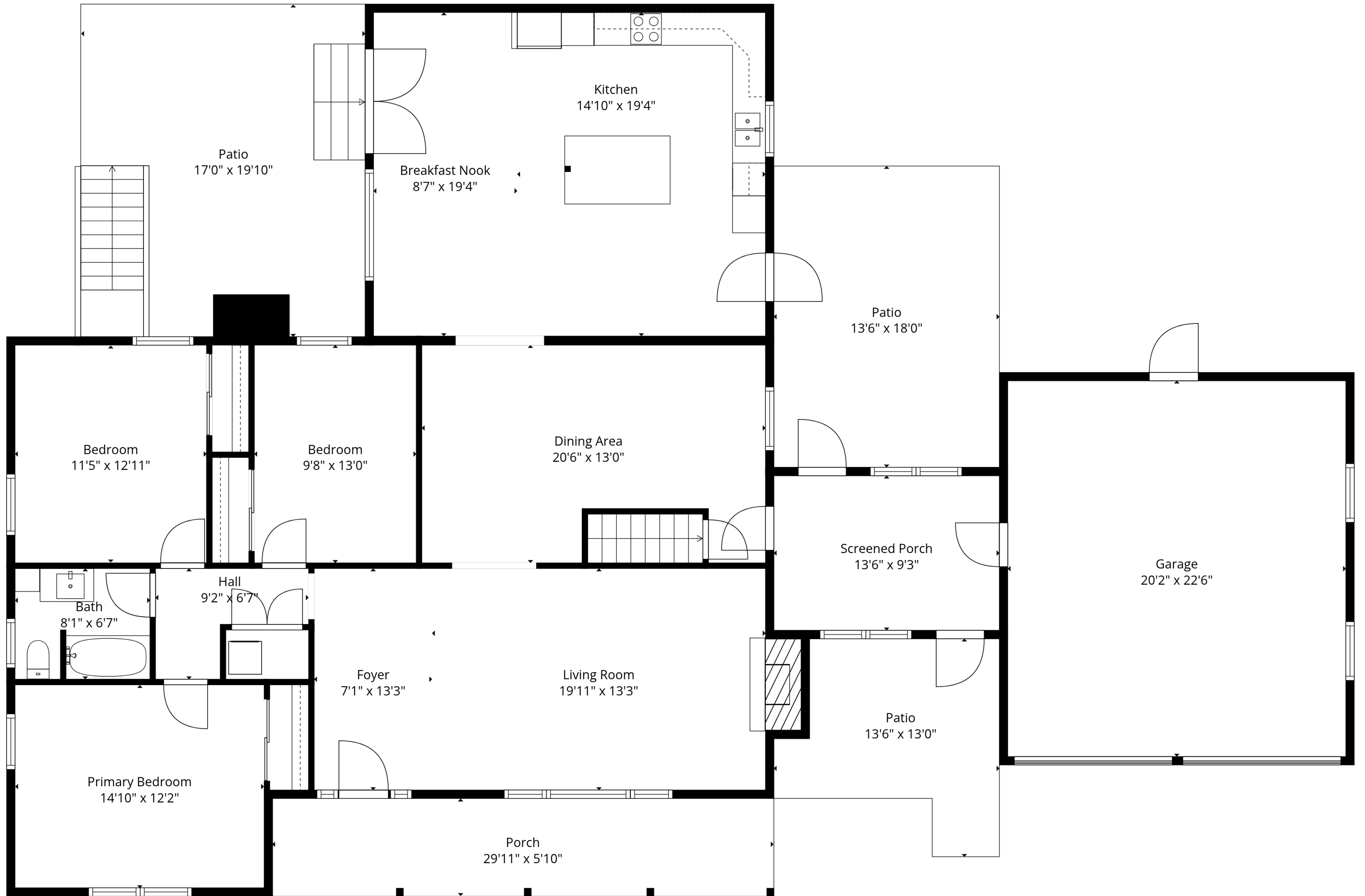
Basement
44'9" x 32'4"

TOTAL: 1748 sq. ft

Basement: 0 sq. ft, 1st floor: 1748 sq. ft

EXCLUDED AREAS: BASEMENT: 1281 sq. ft, FIREPLACE: 26 sq. ft, GARAGE: 454 sq. ft,
SCREENED PORCH: 125 sq. ft, PORCH: 175 sq. ft, PATIO: 708 sq. ft,
WALLS: 226 sq. ft





TOTAL: 1748 sq. ft

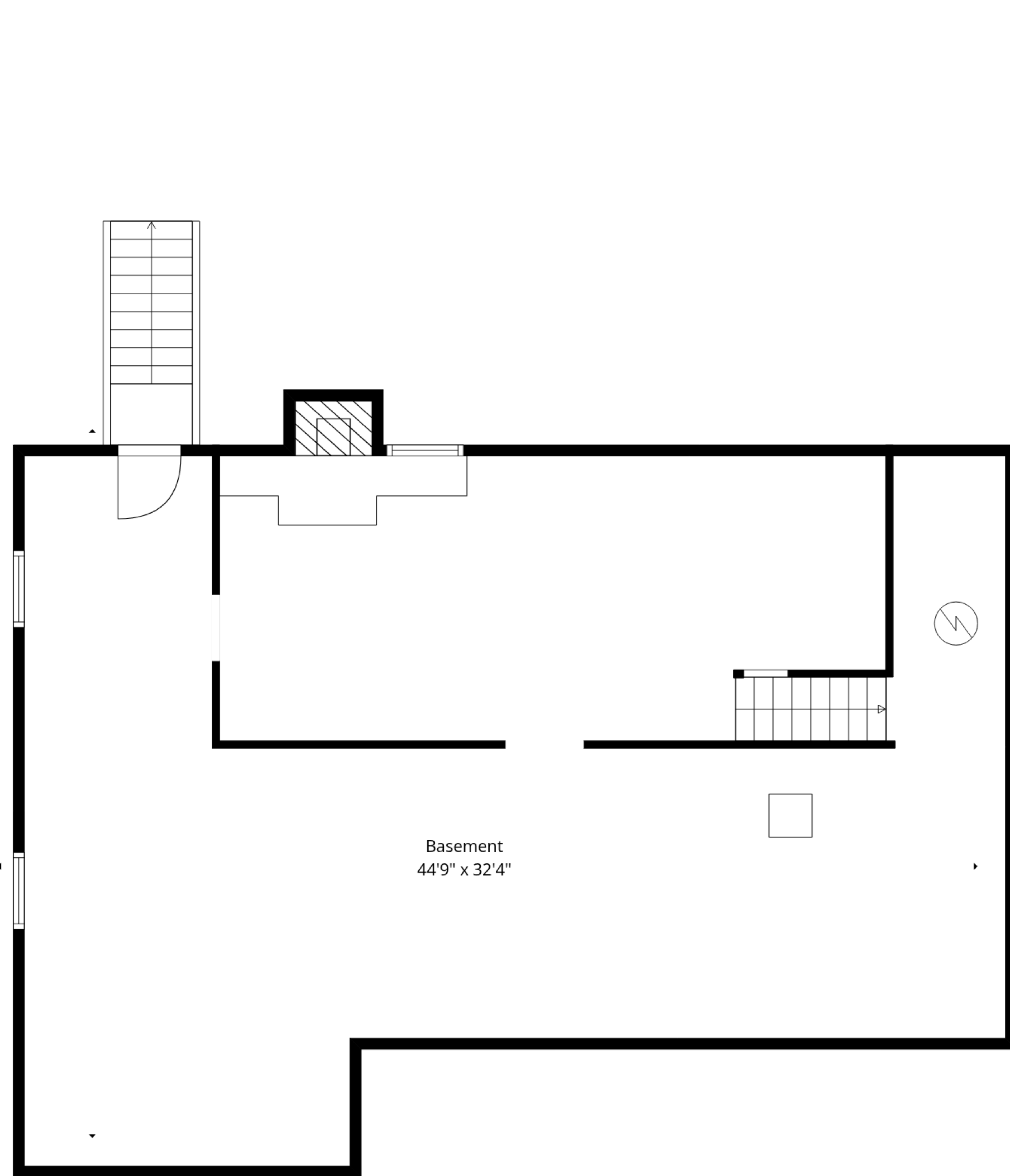
Basement: 0 sq. ft, 1st floor: 1748 sq. ft

EXCLUDED AREAS: BASEMENT: 1281 sq. ft, FIREPLACE: 26 sq. ft, GARAGE: 454 sq. ft,

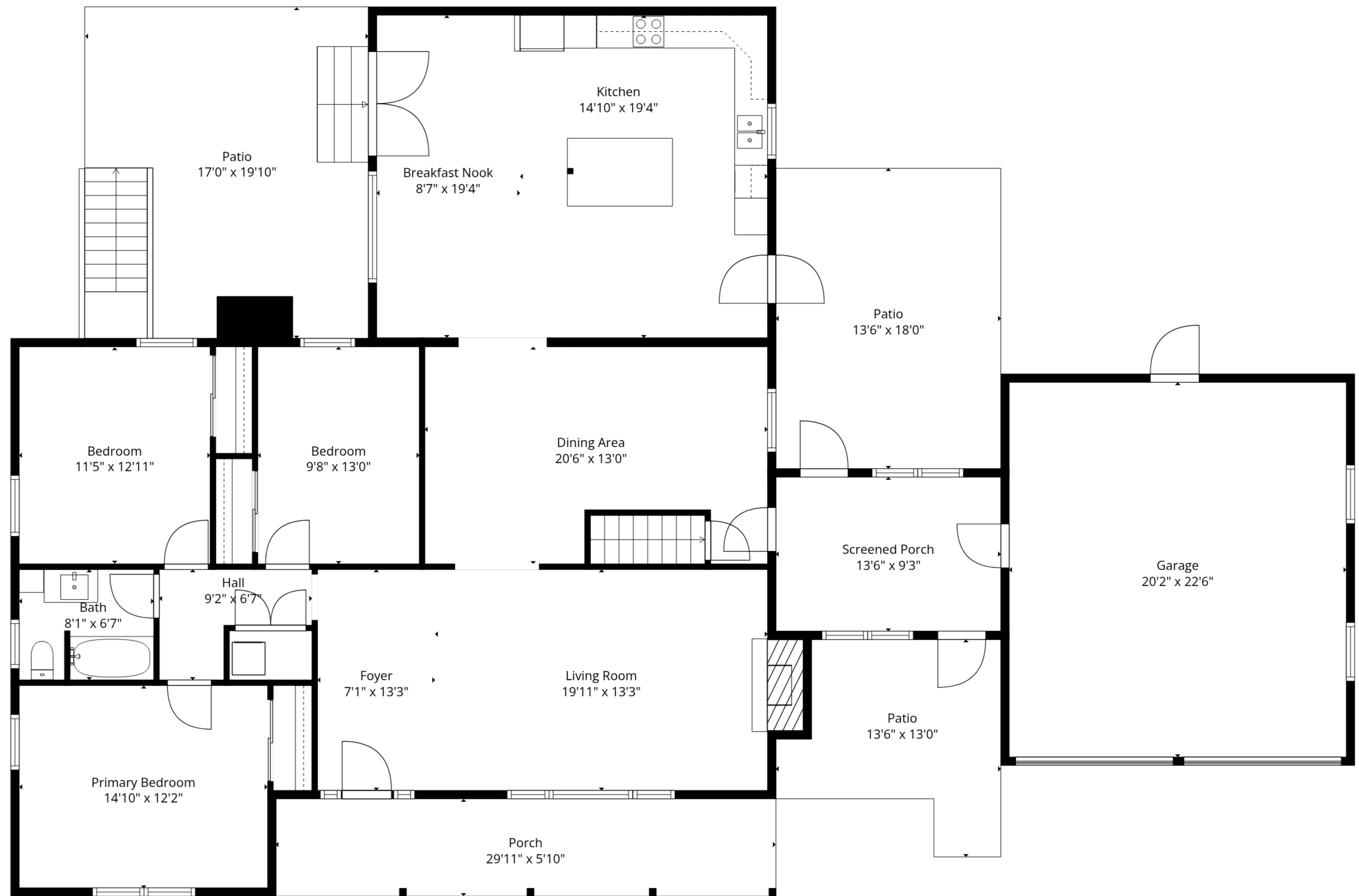
SCREENED PORCH: 125 sq. ft, PORCH: 175 sq. ft, PATIO: 708 sq. ft,

WALLS: 226 sq. ft





Basement



1st Floor

TOTAL: 1748 sq. ft

Basement: 0 sq. ft, 1st floor: 1748 sq. ft

EXCLUDED AREAS: BASEMENT: 1281 sq. ft, FIREPLACE: 26 sq. ft, GARAGE: 454 sq. ft,
 SCREENED PORCH: 125 sq. ft, PORCH: 175 sq. ft, PATIO: 708 sq. ft,
 WALLS: 226 sq. ft

