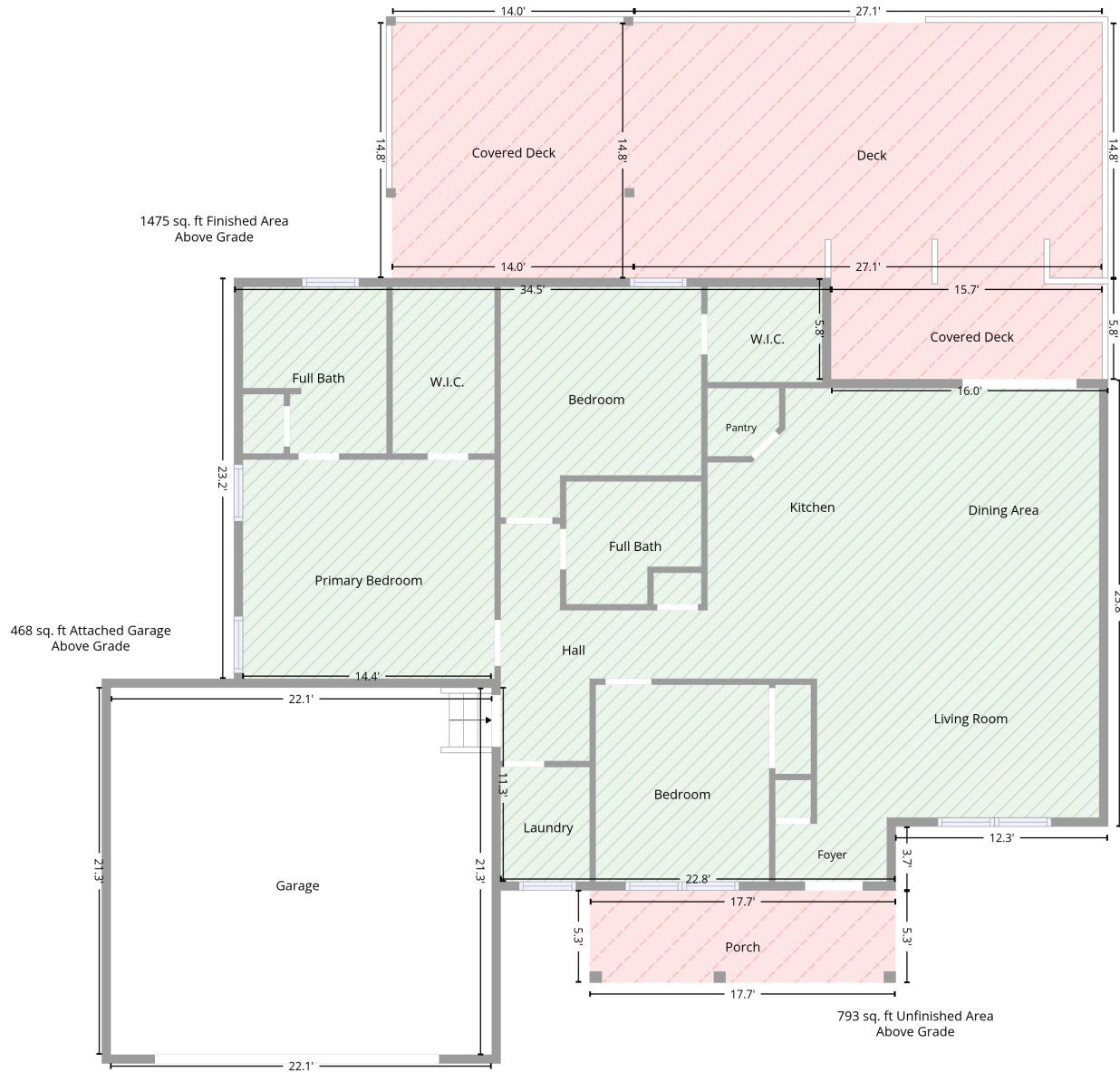


229 North Macon Drive, Littleton, Warren County, North Carolina, United States, 27850

Total area: 1475 sq. ft
Gross living area: 1475 sq. ft

Finished area: 1475 sq. ft
Non-standard finished area: 0 sq. ft

Level 1



Total area: 1475 sq. ft
Gross living area: 1475 sq. ft

Finished area: 1475 sq. ft
Non-standard finished area: 0 sq. ft

229 North Macon Drive, Littleton, Warren County, North Carolina, United States, 27850

Total area: 1475 sq. ft
Gross living area: 1475 sq. ft

Finished area: 1475 sq. ft
Non-standard finished area: 0 sq. ft

Level 1

Space	Area (sq. ft)	Calculation <small>Coordinate Polygon Area Algorithm using inches</small>
Finished Area <ul style="list-style-type: none">• Living area• Finished Area	1475	$-\left((573.9 + 573.9) * (298.6 - 368.9) + (573.9 + 766.1) * (368.9 - 368.9) + (766.1 + 766.1) * (368.9 - 679.2) + (766.1 + 618.7) * (679.2 - 679.2) + (618.7 + 618.7) * (679.2 - 723.6) + (618.7 + 344.5) * (723.6 - 723.6) + (344.5 + 344.5) * (723.6 - 717.6) + (344.5 + 338.5) * (717.6 - 717.6) + (338.5 + 338.5) * (717.6 - 582.8) + (338.5 + 165.6) * (582.8 - 582.8) + (165.6 + 165.6) * (582.8 - 576.8) + (165.6 + 159.6) * (576.8 - 576.8) + (159.6 + 159.6) * (576.8 - 298.6) + (159.6 + 573.9) * (298.6 - 298.6)\right) * 0.5 * 0.00694$
PORCH <ul style="list-style-type: none">• Non-living area• Unfinished Area	94	$-\left((618.7 + 618.7) * (723.6 - 787.7) + (618.7 + 406.4) * (787.7 - 787.7) + (406.4 + 406.4) * (787.7 - 723.6) + (406.4 + 618.7) * (723.6 - 723.6)\right) * 0.5 * 0.00694$
COVERED DECK <ul style="list-style-type: none">• Non-living area• Unfinished Area	92	$-\left((762.1 + 762.1) * (298.6 - 368.9) + (762.1 + 573.9) * (368.9 - 368.9) + (573.9 + 573.9) * (368.9 - 298.6) + (573.9 + 762.1) * (298.6 - 298.6)\right) * 0.5 * 0.00694$
COVERED DECK <ul style="list-style-type: none">• Non-living area• Unfinished Area	207	$-\left((437.2 + 437.2) * (121.3 - 298.6) + (437.2 + 269.2) * (298.6 - 298.6) + (269.2 + 269.2) * (298.6 - 121.3) + (269.2 + 437.2) * (121.3 - 121.3)\right) * 0.5 * 0.00694$
DECK <ul style="list-style-type: none">• Non-living area• Unfinished Area	400	$-\left((762.1 + 762.1) * (121.3 - 298.6) + (762.1 + 437.2) * (298.6 - 298.6) + (437.2 + 437.2) * (298.6 - 121.3) + (437.2 + 762.1) * (121.3 - 121.3)\right) * 0.5 * 0.00694$
GARAGE <ul style="list-style-type: none">• Attached Garage	468	$-\left((338.5 + 338.5) * (582.8 - 837.7) + (338.5 + 73.9) * (837.7 - 837.7) + (73.9 + 73.9) * (837.7 - 582.8) + (73.9 + 338.5) * (582.8 - 582.8)\right) * 0.5 * 0.00694$

229 North Macon Drive, Littleton, Warren County, North Carolina, United States, 27850

Total area: 1475 sq. ft

Gross living area: 1475 sq. ft

Finished area: 1475 sq. ft

Non-standard finished area: 0 sq. ft

Property UPD

Data	Value
Structure	1
Unit	1
Level Number	1
Below Grade	false
Level Low Ceiling	false
ADU Indicator	false
Total Area	1475
Finished Area	1475
Non-Standard Finished Area	0