

517 West C J Thomas Road, Unionville, Monroe, Union County, North Carolina, United States, 28110

Gross Living Area: 4527 sq. ft

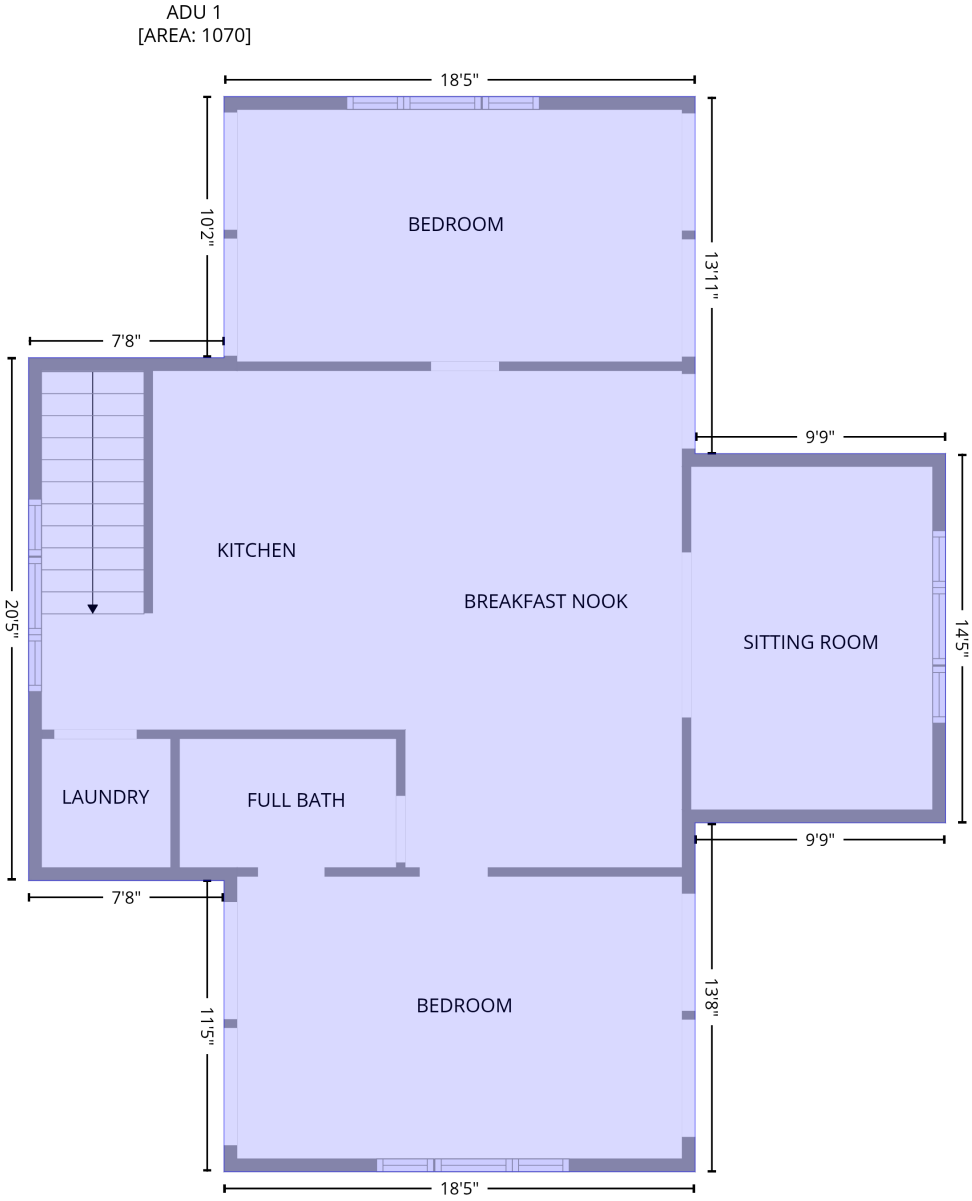
Level 1

Space	Area (sq. ft)	Calculation <small>Coordinate Polygon Area Algorithm using inches</small>
STORAGE (Non-living area)	36	$-((182.9 + 182.9) * (1099.7 - 1194.6) + (182.9 + 128.8) * (1194.6 - 1194.6) + (128.8 + 128.8) * (1194.6 - 1099.7) + (128.8 + 182.9) * (1099.7 - 1099.7)) * 0.5 * 0.00694$
PATIO (Non-living area)	556	$-((260.9 + 282.6) * (495.2 - 496.9) + (282.6 + 306.2) * (496.9 - 503.6) + (306.2 + 326.2) * (503.6 - 513.7) + (326.2 + 346.6) * (513.7 - 528.2) + (346.6 + 360.8) * (528.2 - 542.8) + (360.8 + 375.1) * (542.8 - 564.4) + (375.1 + 385.4) * (564.4 - 588.7) + (385.4 + 390.6) * (588.7 - 615.5) + (390.6 + 390.9) * (615.5 - 643.7) + (390.9 + 390.9) * (643.7 - 829.7) + (390.9 + 128.8) * (829.7 - 829.7) + (128.8 + 128.8) * (829.7 - 623.3) + (128.8 + 131) * (623.3 - 600.8) + (131 + 139.9) * (600.8 - 572.9) + (139.9 + 152.6) * (572.9 - 550.3) + (152.6 + 173.4) * (550.3 - 528) + (173.4 + 191.6) * (528 - 514.8) + (191.6 + 211.1) * (514.8 - 504.6) + (211.1 + 234.7) * (504.6 - 497.5) + (234.7 + 260.9) * (497.5 - 495.2)) * 0.5 * 0.00694$
LOW CEILING (Non-living area)	37	$-((182.9 + 182.9) * (999.8 - 1099.7) + (182.9 + 128.8) * (1099.7 - 1099.7) + (128.8 + 128.8) * (1099.7 - 999.8) + (128.8 + 182.9) * (999.8 - 999.8)) * 0.5 * 0.00694$

517 West C J Thomas Road, Unionville, Monroe, Union County, North Carolina, United States, 28110

Gross Living Area: 4527 sq. ft

Level 2

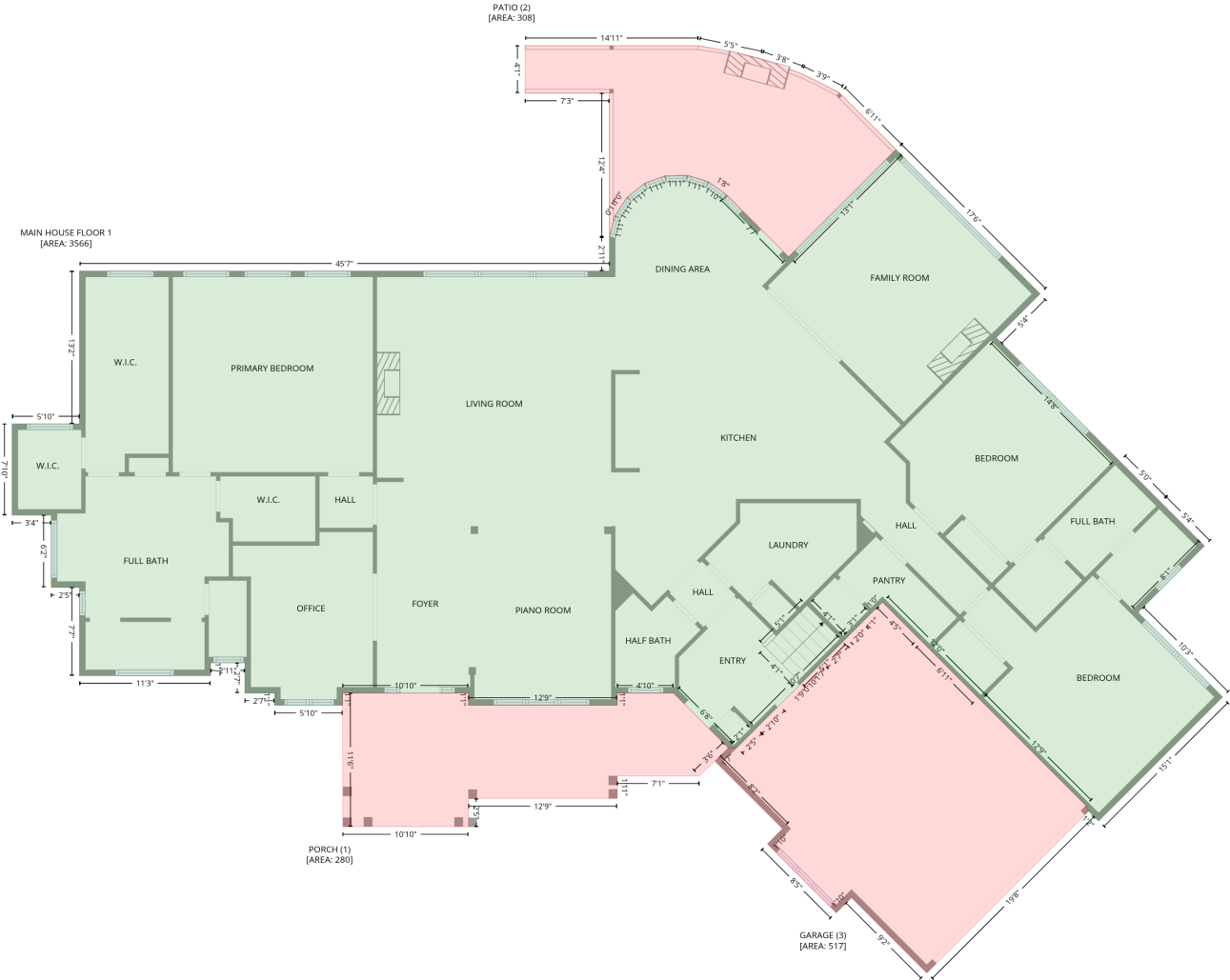


Space	Area (sq. ft)	Calculation <small>Coordinate Polygon Area Algorithm using inches</small>
ADU 1 (Living area)	1070	$-\left((441 + 441) * (830 - 997) + (441 + 559) * (997 - 997) + (559 + 559) * (997 - 1170) + (559 + 441) * (1170 - 1170) + (441 + 441) * (1170 - 1334) + (441 + 220) * (1334 - 1334) + (220 + 220) * (1334 - 1197) + (220 + 129) * (1197 - 1197) + (129 + 129) * (1197 - 952) + (129 + 220) * (952 - 952) + (220 + 220) * (952 - 830) + (220 + 441) * (830 - 830)\right) * 0.5 * 0.00694$

517 West C J Thomas Road, Unionville, Monroe, Union County, North Carolina, United States, 28110

Gross Living Area: 4527 sq. ft

Level 3



517 West C J Thomas Road, Unionville, Monroe, Union County, North Carolina, United States, 28110

Gross Living Area: 4527 sq. ft

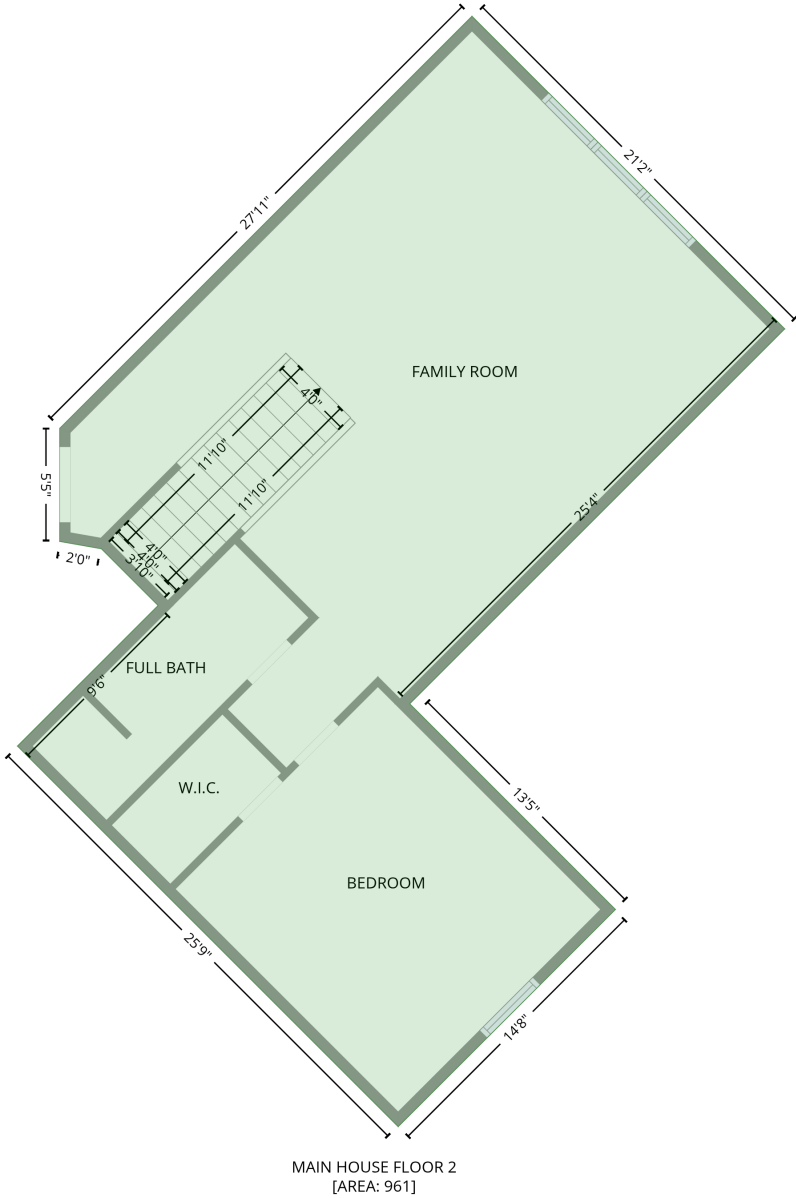
Level 3

Space	Area (sq. ft)	Calculation <small>Coordinate Polygon Area Algorithm using inches</small>
MAIN HOUSE FLOOR 1 (Living area)	3566	$ \begin{aligned} & -((2066.6 + 2215.4) * (-46.1 - 102.7) + (2215.4 + 2170.1) * (102.7 - 148) + (2170.1 + 2294.3) * \\ & (148 - 272.2) + (2294.3 + 2294.4) * (272.2 - 272.2) + (2294.4 + 2297.1) * (272.2 - 275.1) + \\ & (2297.1 + 2339.6) * (275.1 - 317.5) + (2339.6 + 2384.8) * (317.5 - 362.8) + (2384.8 + 2316.3) * \\ & (362.8 - 431.3) + (2316.3 + 2403.6) * (431.3 - 518.6) + (2403.6 + 2275.6) * (518.6 - 646.6) + \\ & (2275.6 + 2265.4) * (646.6 - 636.4) + (2265.4 + 2262.5) * (636.4 - 630.7) + (2262.5 + 2262.6) * \\ & (630.7 - 630.7) + (2262.6 + 2154.1) * (630.7 - 522.3) + (2154.1 + 2052.6) * (522.3 - 420.8) + \\ & (2052.6 + 2043.8) * (420.8 - 429.6) + (2043.8 + 2042.9) * (429.6 - 430.3) + (2042.9 + 2042.1) * \\ & (430.3 - 431.3) + (2042.1 + 2040.9) * (431.3 - 432.4) + (2040.9 + 2015) * (432.4 - 458.3) + (2015 \\ & + 2015) * (458.3 - 458.4) + (2015 + 2012.2) * (458.4 - 461.1) + (2012.2 + 1922.6) * (461.1 - \\ & 550.7) + (1922.6 + 1919.8) * (550.7 - 553.6) + (1919.8 + 1902) * (553.6 - 571.2) + (1902 + \\ & 1893.7) * (571.2 - 571.2) + (1893.7 + 1837.1) * (571.2 - 514.6) + (1837.1 + 1779) * (514.6 - \\ & 514.6) + (1779 + 1779) * (514.6 - 527.1) + (1779 + 1625.6) * (527.1 - 527.1) + (1625.6 + 1625.6) \\ & * (527.1 - 514.6) + (1625.6 + 1495.9) * (514.6 - 514.6) + (1495.9 + 1495.9) * (514.6 - 527.1) + \\ & (1495.9 + 1425.7) * (527.1 - 527.1) + (1425.7 + 1425.7) * (527.1 - 514.6) + (1425.7 + 1395) * \\ & (514.6 - 514.6) + (1395 + 1395) * (514.6 - 483.4) + (1395 + 1359.6) * (483.4 - 483.4) + (1359.6 + \\ & 1359.6) * (483.4 - 496.6) + (1359.6 + 1224.4) * (496.6 - 496.6) + (1224.4 + 1224.4) * (496.6 - \\ & 405.5) + (1224.4 + 1195.2) * (405.5 - 405.5) + (1195.2 + 1195.2) * (405.5 - 331.1) + (1195.2 + \\ & 1154.8) * (331.1 - 331.1) + (1154.8 + 1154.8) * (331.1 - 236.9) + (1154.8 + 1224.4) * (236.9 - \\ & 236.9) + (1224.4 + 1224.4) * (236.9 - 79.3) + (1224.4 + 1771) * (79.3 - 79.3) + (1771 + 1771) * \\ & (79.3 - 44.3) + (1771 + 1776.7) * (44.3 - 22.4) + (1776.7 + 1789.1) * (22.4 - 3.2) + (1789.1 + \\ & 1807) * (3.2 - -11) + (1807 + 1828.5) * (-11 - -18.9) + (1828.5 + 1851.4) * (-18.9 - -19.5) + (1851.4 \\ & + 1873.3) * (-19.5 - -12.8) + (1873.3 + 1891.5) * (-12.8 - 0.2) + (1891.5 + 1955.9) * (0.2 - 64.6) + \\ & (1955.9 + 2066.6) * (64.6 - -46.1)) * 0.5 * 0.00694 \end{aligned} $
PORCH (Non-living area)	280	$ \begin{aligned} & -((1625.6 + 1625.6) * (514.6 - 527.1) + (1625.6 + 1779) * (527.1 - 527.1) + (1779 + 1779) * \\ & (527.1 - 514.6) + (1779 + 1837.1) * (514.6 - 514.6) + (1837.1 + 1893.7) * (514.6 - 571.2) + \\ & (1893.7 + 1863.8) * (571.2 - 600.1) + (1863.8 + 1779) * (600.1 - 600.1) + (1779 + 1779) * (600.1 - \\ & 623.2) + (1779 + 1625.7) * (623.2 - 623.2) + (1625.7 + 1625.7) * (623.2 - 652.4) + (1625.7 + \\ & 1496.1) * (652.4 - 652.4) + (1496.1 + 1495.9) * (652.4 - 514.6) + (1495.9 + 1625.6) * (514.6 - \\ & 514.6)) * 0.5 * 0.00694 \end{aligned} $
PATIO (Non-living area)	308	$ \begin{aligned} & -((1684 + 1862.6) * (-153.3 - -153.2) + (1862.6 + 1926.7) * (-153.2 - -139.7) + (1926.7 + 1967.7) * \\ & (-139.7 - -124.9) + (1967.7 + 2008.2) * (-124.9 - -104.6) + (2008.2 + 2066.6) * (-104.6 - -46.1) + \\ & (2066.6 + 1955.9) * (-46.1 - 64.6) + (1955.9 + 1894.4) * (64.6 - 3.2) + (1894.4 + 1891.7) * (3.2 - \\ & 0.2) + (1891.7 + 1875.7) * (0.2 - -11) + (1875.7 + 1873.4) * (-11 - -12.8) + (1873.4 + 1853.2) * \\ & (-12.8 - -18.9) + (1853.2 + 1851.4) * (-18.9 - -19.5) + (1851.4 + 1851.6) * (-19.5 - -19.3) + (1851.6 \\ & + 1828.5) * (-19.3 - -18.9) + (1828.5 + 1806.8) * (-18.9 - -11) + (1806.8 + 1789.1) * (-11 - 3.2) + \\ & (1789.1 + 1783.1) * (3.2 - 13) + (1783.1 + 1776.7) * (13 - 22.4) + (1776.7 + 1776.8) * (22.4 - 22.4) \\ & + (1776.8 + 1771.1) * (22.4 - 44.1) + (1771.1 + 1771.1) * (44.1 - -104.3) + (1771.1 + 1684) * \\ & (-104.3 - -104.3) + (1684 + 1684) * (-104.3 - -153.3)) * 0.5 * 0.00694 \end{aligned} $
GARAGE (Non-living area)	517	$ \begin{aligned} & -((2052.8 + 2090) * (420.9 - 458.3) + (2090 + 2090.4) * (458.3 - 458.4) + (2090.4 + 2093.1) * \\ & (458.4 - 461.1) + (2093.1 + 2151.3) * (461.1 - 519.5) + (2151.3 + 2154.1) * (519.5 - 522.3) + \\ & (2154.1 + 2262.5) * (522.3 - 630.7) + (2262.5 + 2265.4) * (630.7 - 636.4) + (2265.4 + 2098.4) * \\ & (636.4 - 803.3) + (2098.4 + 2020.7) * (803.3 - 725.6) + (2020.7 + 2005) * (725.6 - 741.2) + (2005 \\ & + 1934) * (741.2 - 670.2) + (1934 + 1949.6) * (670.2 - 654.5) + (1949.6 + 1880) * (654.5 - 584.9) \\ & + (1880 + 1893.7) * (584.9 - 571.2) + (1893.7 + 1902.2) * (571.2 - 571.2) + (1902.2 + 1922.5) * \\ & (571.2 - 551) + (1922.5 + 1946.2) * (551 - 527.1) + (1946.2 + 1951.3) * (527.1 - 522.3) + (1951.3 \\ & + 1954.9) * (522.3 - 518.6) + (1954.9 + 1969.7) * (518.6 - 503.9) + (1969.7 + 1976.8) * (503.9 - \\ & 496.6) + (1976.8 + 1989.8) * (496.6 - 483.4) + (1989.8 + 2012) * (483.4 - 461.2) + (2012 + \\ & 2012.2) * (461.2 - 461.1) + (2012.2 + 2013.8) * (461.1 - 459.4) + (2013.8 + 2015.1) * (459.4 - \\ & 458.3) + (2015.1 + 2031.9) * (458.3 - 441.3) + (2031.9 + 2040.9) * (441.3 - 432.4) + (2040.9 + \\ & 2042.1) * (432.4 - 431.3) + (2042.1 + 2042.5) * (431.3 - 430.7) + (2042.5 + 2043.7) * (430.7 - \\ & 429.6) + (2043.7 + 2052.8) * (429.6 - 420.9)) * 0.5 * 0.00694 \end{aligned} $

517 West C J Thomas Road, Unionville, Monroe, Union County, North Carolina, United States, 28110

Gross Living Area: 4527 sq. ft

Level 4



Space	Area (sq. ft)	Calculation <small>Coordinate Polygon Area Algorithm using inches</small>
MAIN HOUSE FLOOR 2 (Living area)	961	$ \begin{aligned} & -((2164.4 + 2343.9) * (142.3 - 321.8) + (2343.9 + 2128.7) * (321.8 - 536.9) + (2128.7 + 2130.2) * \\ & (536.9 - 538.4) + (2130.2 + 2130.3) * (538.4 - 538.6) + (2130.3 + 2132.9) * (538.6 - 541.1) + \\ & (2132.9 + 2246.8) * (541.1 - 655) + (2246.8 + 2122.1) * (655 - 779.7) + (2122.1 + 1903.6) * \\ & (779.7 - 561.2) + (1903.6 + 1984.3) * (561.2 - 480.5) + (1984.3 + 1951.8) * (480.5 - 448) + \\ & (1951.8 + 1927.9) * (448 - 443.8) + (1927.9 + 1927.9) * (443.8 - 378.9) + (1927.9 + 2164.4) * \\ & (378.9 - 142.3)) * 0.5 * 0.00694 \end{aligned} $