

Basement  
35'7" x 42'5"

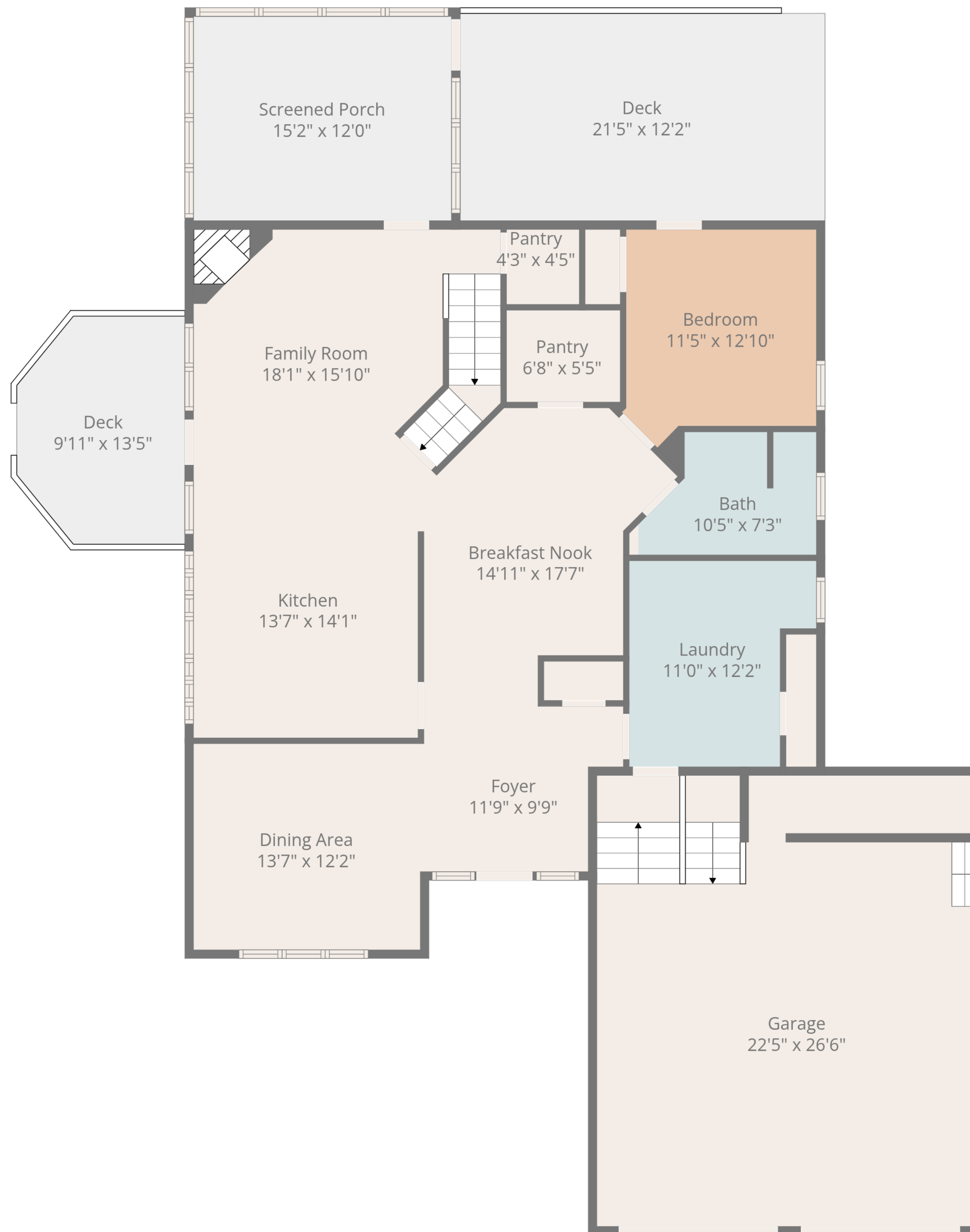
Room  
9'7" x 6'9"

Storage  
9'7" x 4'1"

**TOTAL: 2538 sq. ft**

Basement 1: 0 sq. ft, 1st floor: 1363 sq. ft, 2nd floor: 1175 sq. ft  
 EXCLUDED AREAS: BASEMENT: 1234 sq. ft, STORAGE: 42 sq. ft, UNDEFINED: 49 sq. ft,  
 ROOM: 64 sq. ft, SCREENED PORCH: 183 sq. ft, DECK: 381 sq. ft,  
 GARAGE: 587 sq. ft, OPEN TO BELOW: 481 sq. ft, LOW CEILING: 233 sq. ft,  
 WALLS: 357 sq. ft

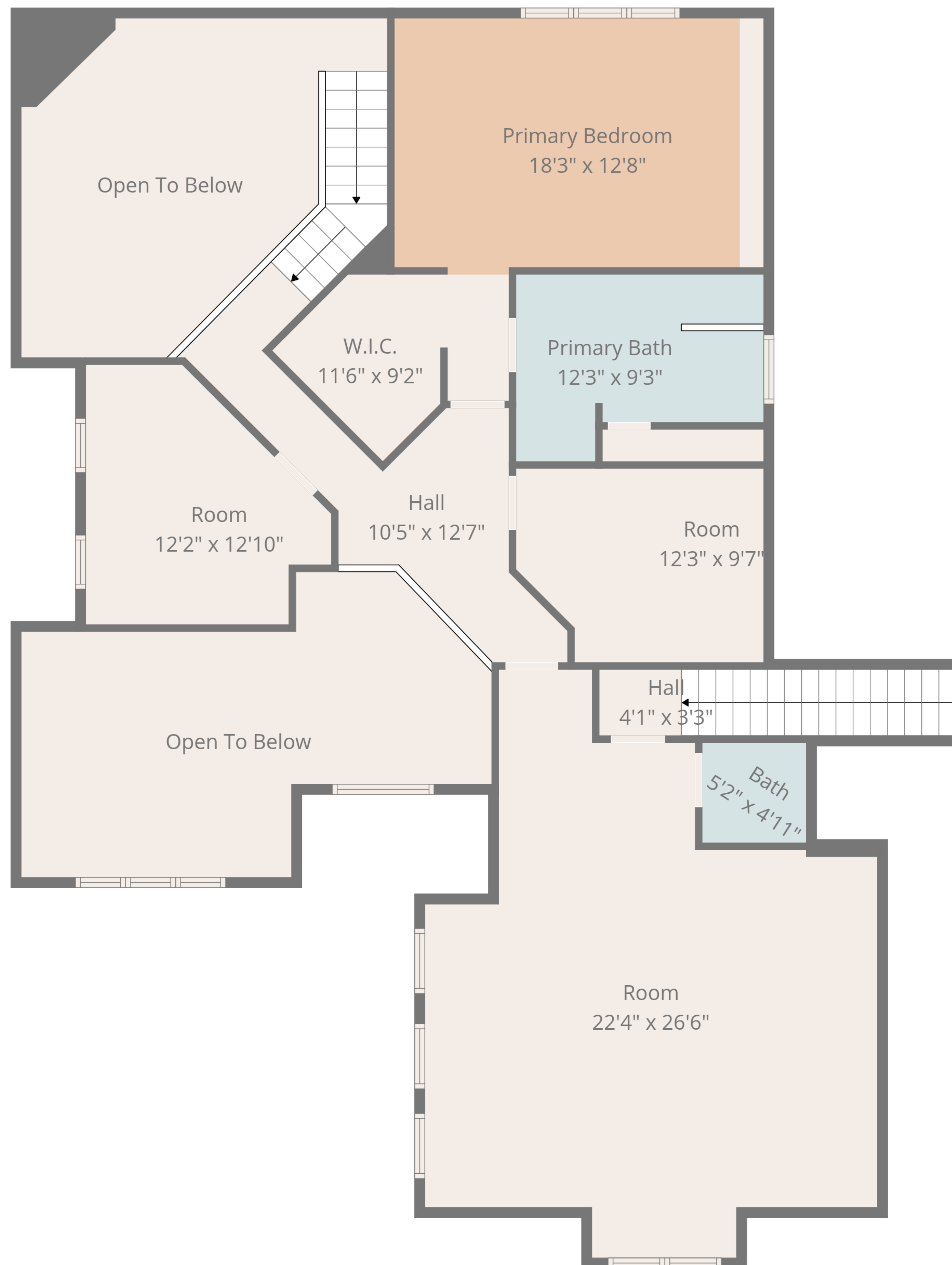




**TOTAL: 2538 sq. ft**

Basement 1: 0 sq. ft, 1st floor: 1363 sq. ft, 2nd floor: 1175 sq. ft  
 EXCLUDED AREAS: BASEMENT: 1234 sq. ft, STORAGE: 42 sq. ft, UNDEFINED: 49 sq. ft,  
 ROOM: 64 sq. ft, SCREENED PORCH: 183 sq. ft, DECK: 381 sq. ft,  
 GARAGE: 587 sq. ft, OPEN TO BELOW: 481 sq. ft, LOW CEILING: 233 sq. ft,  
 WALLS: 357 sq. ft

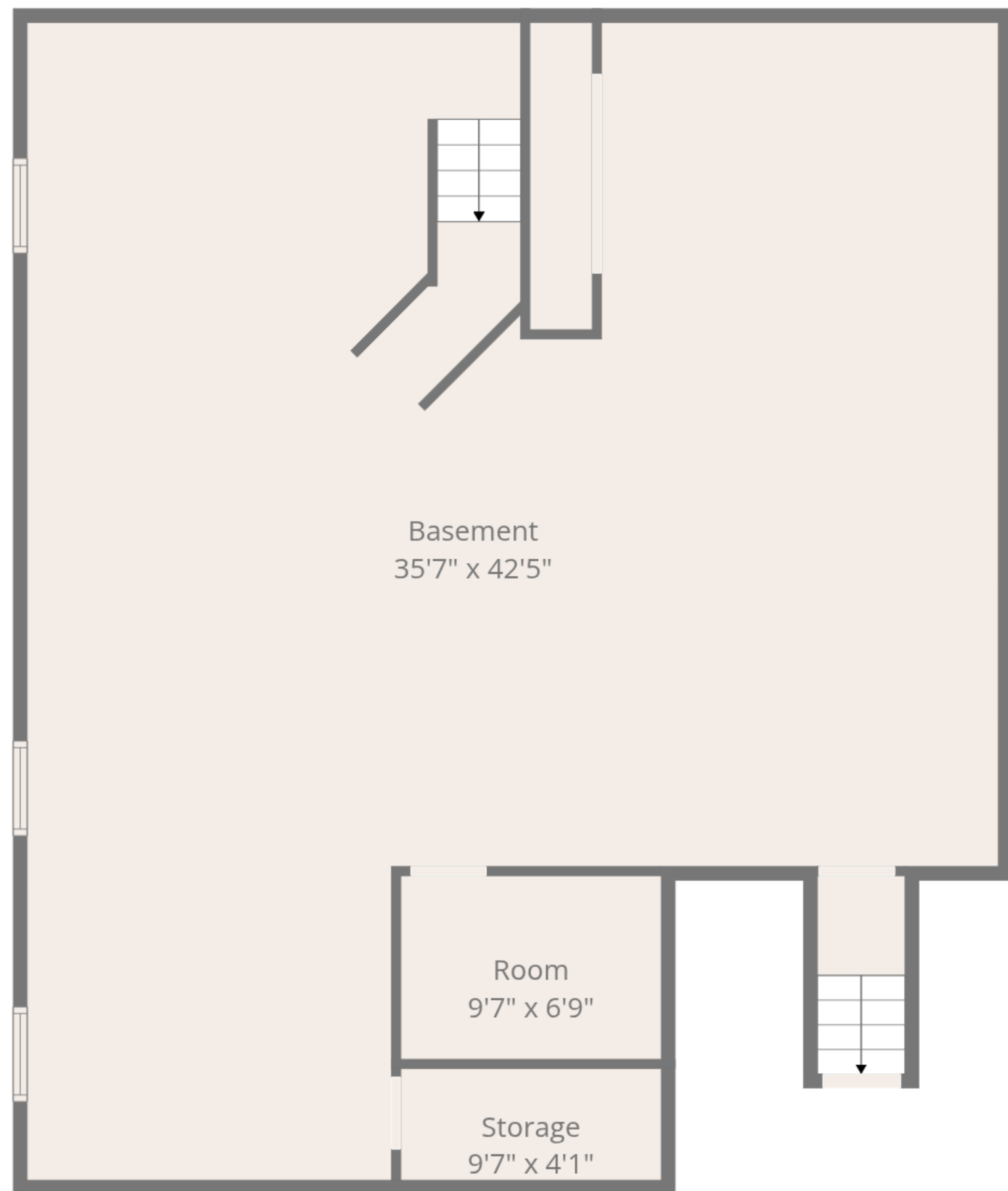




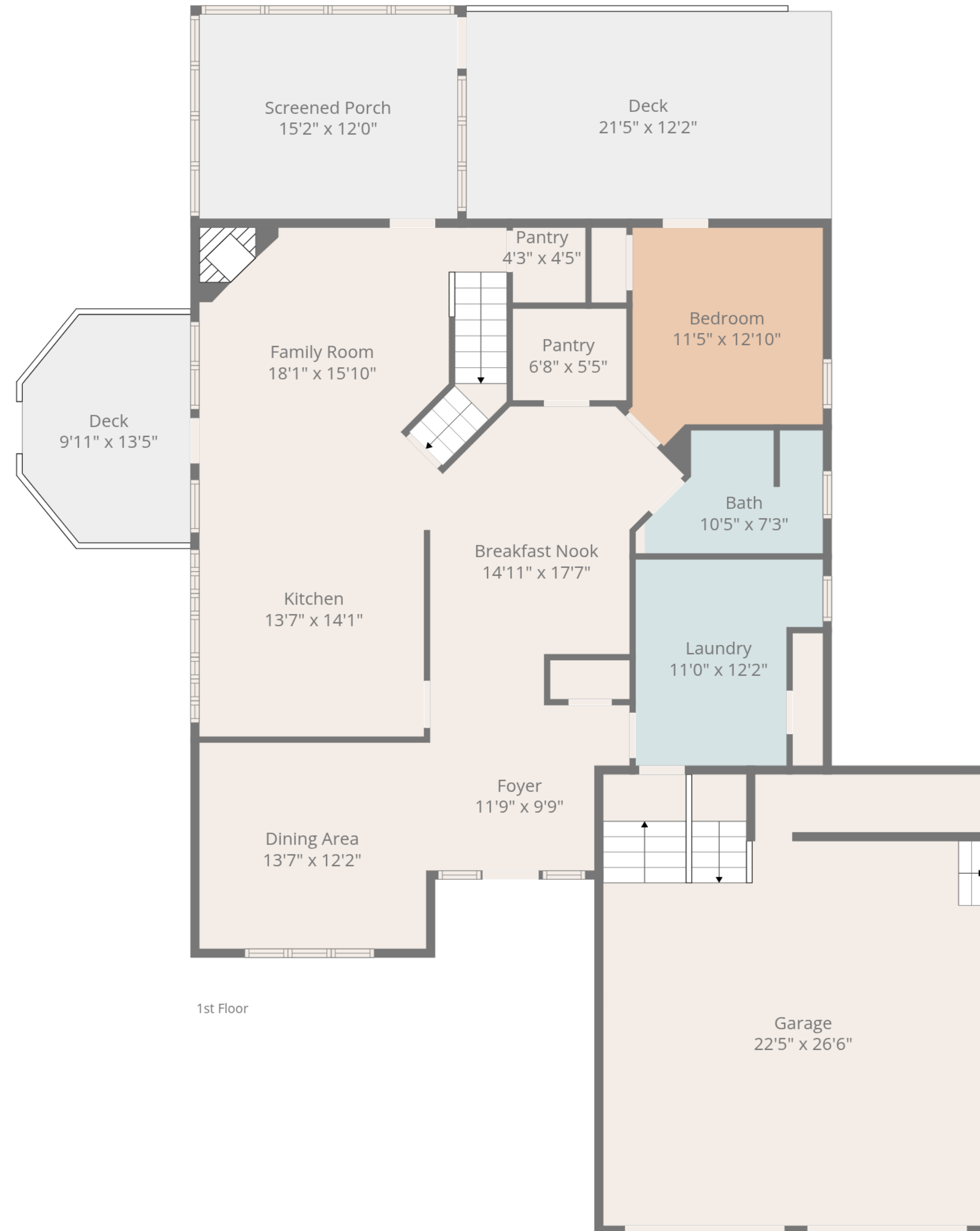
**TOTAL: 2538 sq. ft**

Basement 1: 0 sq. ft, 1st floor: 1363 sq. ft, 2nd floor: 1175 sq. ft  
 EXCLUDED AREAS: BASEMENT: 1234 sq. ft, STORAGE: 42 sq. ft, UNDEFINED: 49 sq. ft,  
 ROOM: 64 sq. ft, SCREENED PORCH: 183 sq. ft, DECK: 381 sq. ft,  
 GARAGE: 587 sq. ft, OPEN TO BELOW: 481 sq. ft, LOW CEILING: 233 sq. ft,  
 WALLS: 357 sq. ft

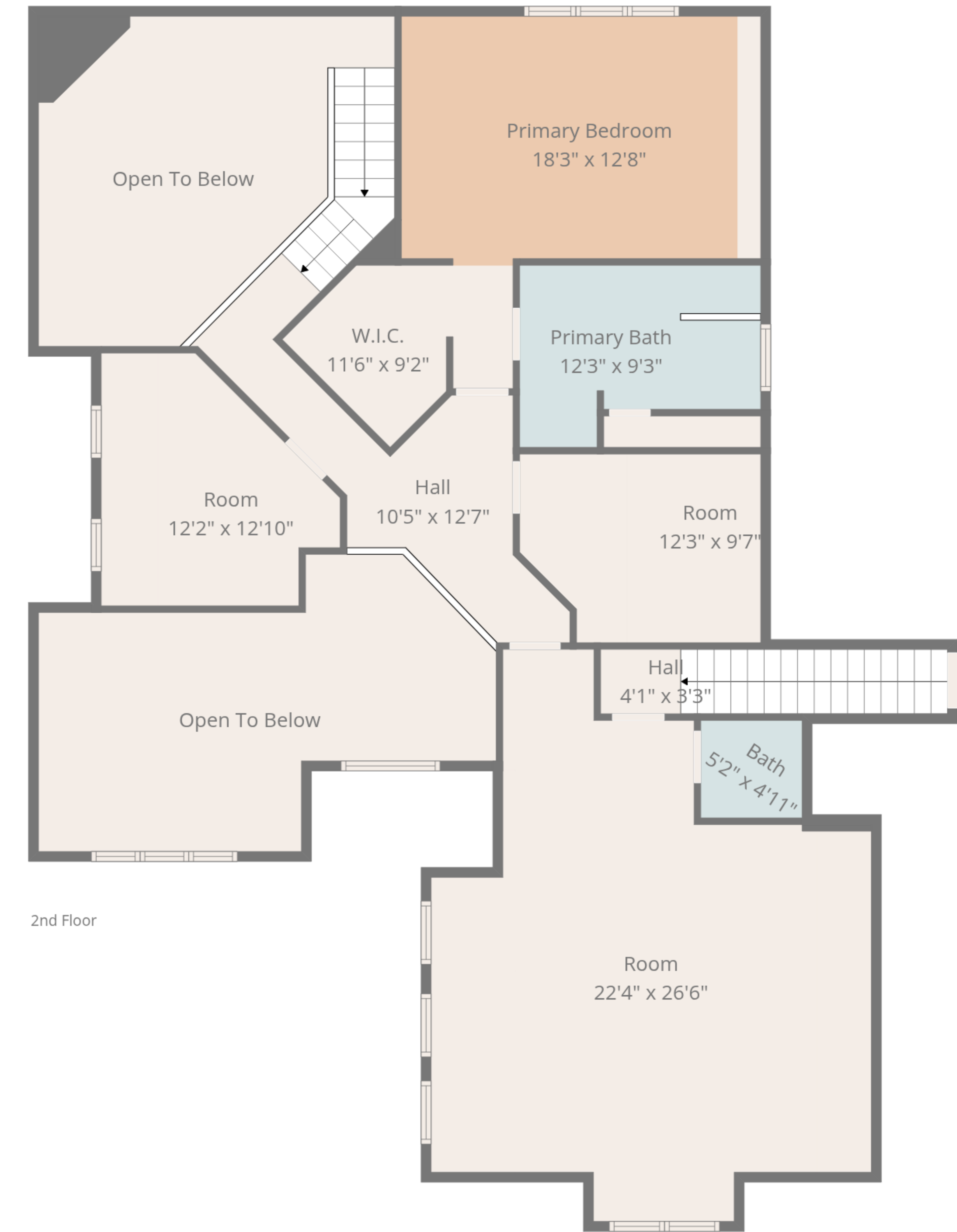




Basement 1



1st Floor



2nd Floor

**TOTAL: 2538 sq. ft**  
 Basement 1: 0 sq. ft, 1st floor: 1363 sq. ft, 2nd floor: 1175 sq. ft  
 EXCLUDED AREAS: BASEMENT: 1234 sq. ft, STORAGE: 42 sq. ft, UNDEFINED: 49 sq. ft,  
 ROOM: 64 sq. ft, SCREENED PORCH: 183 sq. ft, DECK: 381 sq. ft,  
 GARAGE: 587 sq. ft, OPEN TO BELOW: 481 sq. ft, LOW CEILING: 233 sq. ft,  
 WALLS: 357 sq. ft

