

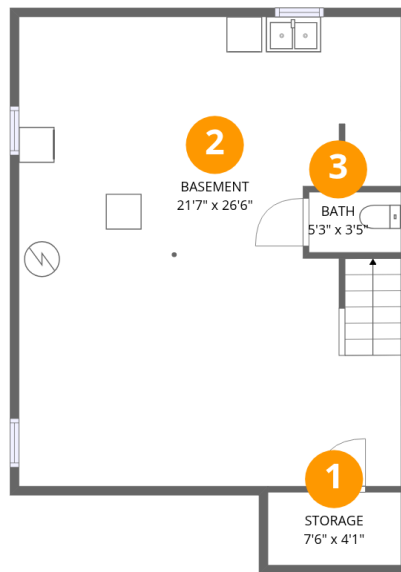
Total Area: 2190 sq. ft

Basement: 576 sq. ft, 1st Floor: 1041 sq. ft, 2nd Floor: 573 sq. ft

Excluded: Storage 31 sq. ft, Fireplace 11 sq. ft, Walls: 174 sq. ft

Property summary





Room dimensions

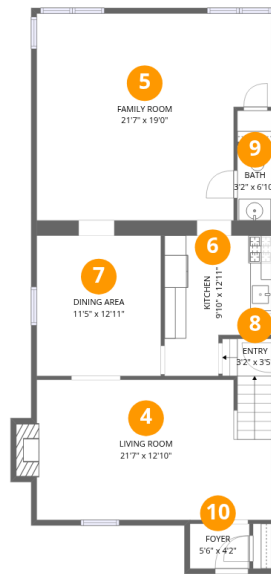
Floor 1 Below grade

Total: 576 sqft Excluded: 31 sqft

#		Dimensions	sqft	Counted as living area
1	Storage	7'6" x 4'1"	31 sq. ft	No
2	Basement	21'7" x 26'6"	549 sq. ft	Yes
3	Bath	5'3" x 3'5"	18 sq. ft	Yes

Home data report

1618 N Natoma Ave, Chicago, IL, US

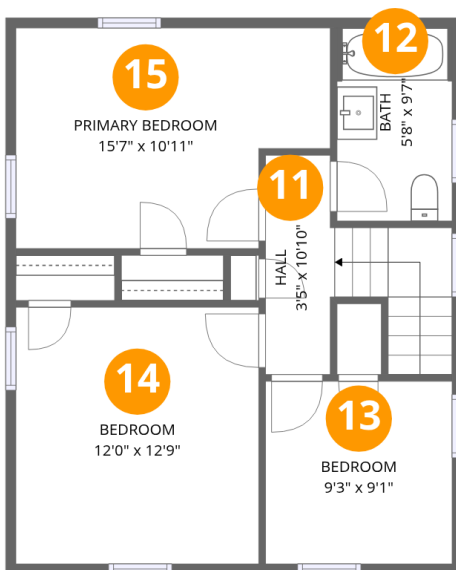


Room dimensions

Floor 2

Total:1041sqft Excluded: 11sqft

#		Dimensions	sqft	Counted as living area
4	Living Room	21'7" x 12'10"	288 sq. ft	Yes
5	Family Room	21'7" x 19'0"	374 sq. ft	Yes
6	Kitchen	9'10" x 12'11"	109 sq. ft	Yes
7	Dining Area	11'5" x 12'11"	147 sq. ft	Yes
8	Entry	3'2" x 3'5"	16 sq. ft	Yes
9	Bath	3'2" x 6'10"	22 sq. ft	Yes
10	Foyer	5'6" x 4'2"	23 sq. ft	Yes



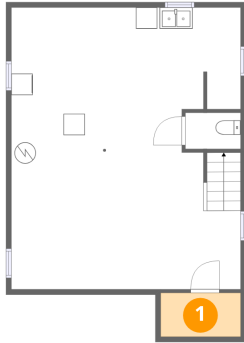
Room dimensions

Floor 3

Total:573sqft Excluded: 0sqft

#		Dimensions	sqft	Counted as living area
11	Hall	3'5" x 10'10"	68 sq. ft	Yes
12	Bath	5'8" x 9'7"	54 sq. ft	Yes
13	Bedroom	9'3" x 9'1"	84 sq. ft	Yes
14	Bedroom	12'0" x 12'9"	153 sq. ft	Yes
15	Primary Bedroom	15'7" x 10'11"	153 sq. ft	Yes

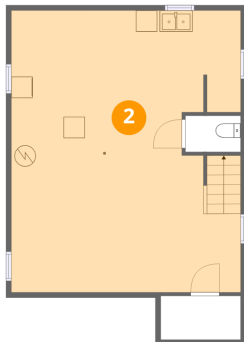
1 Floor 1 - Storage



Dimensions: 7'6" x 4'1"
Area: 31 sq. ft
Counted as living area: No

Heated: No
Finished: Yes
Enclosed: No
Contiguous: Yes
Permitted: Yes
Wet space: No
Addition: No
Conversion: No

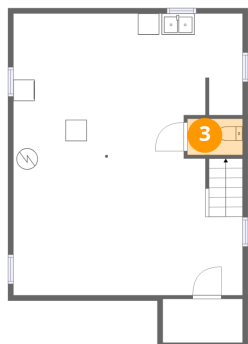
2 Floor 1 - Basement



Dimensions: 21'7" x 26'6"
Area: 549 sq. ft
Counted as living area: Yes

Heated: Yes
Finished: Yes
Enclosed: Yes
Contiguous: Yes
Permitted: Yes
Wet space: No
Addition: No
Conversion: No

3 Floor 1 - Bath



Dimensions: 5'3" x 3'5"
Area: 18 sq. ft
Counted as living area: Yes

Heated: Yes
Finished: Yes
Enclosed: Yes
Contiguous: Yes
Permitted: Yes
Wet space: Yes
Addition: No
Conversion: No

4 Floor 2 - Living Room



Dimensions: 21'7" x 12'10"
Area: 288 sq. ft
Counted as living area: Yes

Heated: Yes
Finished: Yes
Enclosed: Yes
Contiguous: Yes
Permitted: Yes
Wet space: No
Addition: No
Conversion: No

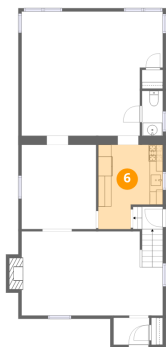
5 Floor 2 - Family Room



Dimensions: 21'7" x 19'0"
Area: 374 sq. ft
Counted as living area: Yes

Heated: Yes
Finished: Yes
Enclosed: Yes
Contiguous: Yes
Permitted: Yes
Wet space: No
Addition: No
Conversion: No

6 Floor 2 - Kitchen



Dimensions: 9'10" x 12'11"
Area: 109 sq. ft
Counted as living area: Yes

Heated: Yes
Finished: Yes
Enclosed: Yes
Contiguous: Yes
Permitted: Yes
Wet space: No
Addition: No
Conversion: No

7 Floor 2 - Dining Area



Dimensions: 11'5" x 12'11"
Area: 147 sq. ft
Counted as living area: Yes

Heated: Yes
Finished: Yes
Enclosed: Yes
Contiguous: Yes
Permitted: Yes
Wet space: No
Addition: No
Conversion: No

8 Floor 2 - Entry



Dimensions: 3'2" x 3'5"
Area: 16 sq. ft
Counted as living area: Yes

Heated: Yes
Finished: Yes
Enclosed: Yes
Contiguous: Yes
Permitted: Yes
Wet space: No
Addition: No
Conversion: No

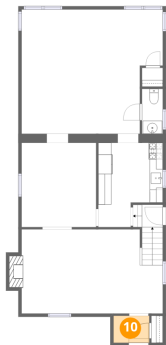
9 Floor 2 - Bath



Dimensions: 3'2" x 6'10"
Area: 22 sq. ft
Counted as living area: Yes

Heated: Yes
Finished: Yes
Enclosed: Yes
Contiguous: Yes
Permitted: Yes
Wet space: Yes
Addition: No
Conversion: No

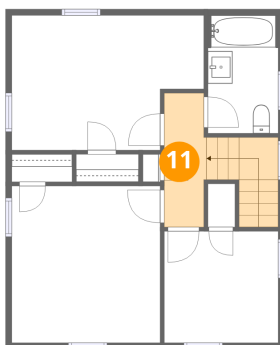
10 Floor 2 - Foyer



Dimensions: 5'6" x 4'2"
Area: 23 sq. ft
Counted as living area: Yes

Heated: Yes
Finished: Yes
Enclosed: Yes
Contiguous: Yes
Permitted: Yes
Wet space: No
Addition: No
Conversion: No

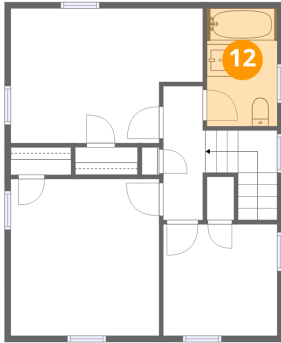
11 Floor 3 - Hall



Dimensions: 3'5" x 10'10"
Area: 68 sq. ft
Counted as living area: Yes

Heated: Yes
Finished: Yes
Enclosed: Yes
Contiguous: Yes
Permitted: Yes
Wet space: No
Addition: No
Conversion: No

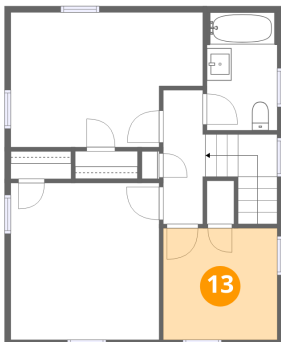
12 Floor 3 - Bath



Dimensions: 5'8" x 9'7"
Area: 54 sq. ft
Counted as living area: Yes

Heated: Yes
Finished: Yes
Enclosed: Yes
Contiguous: Yes
Permitted: Yes
Wet space: Yes
Addition: No
Conversion: No

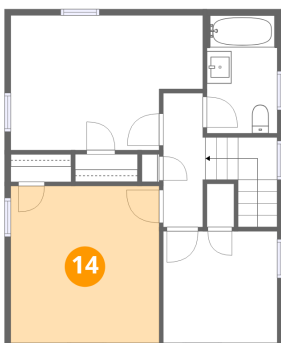
13 Floor 3 - Bedroom



Dimensions: 9'3" x 9'1"
Area: 84 sq. ft
Counted as living area: Yes

Heated: Yes
Finished: Yes
Enclosed: Yes
Contiguous: Yes
Permitted: Yes
Wet space: No
Addition: No
Conversion: No

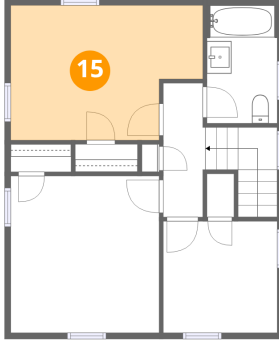
14 Floor 3 - Bedroom



Dimensions: 12'0" x 12'9"
Area: 153 sq. ft
Counted as living area: Yes

Heated: Yes
Finished: Yes
Enclosed: Yes
Contiguous: Yes
Permitted: Yes
Wet space: No
Addition: No
Conversion: No

15 Floor 3 - Primary Bedroom



Dimensions: 15'7" x 10'11"
Area: 153 sq. ft
Counted as living area: Yes

Heated: Yes
Finished: Yes
Enclosed: Yes
Contiguous: Yes
Permitted: Yes
Wet space: No
Addition: No
Conversion: No