

TOTAL: 1292 sq. ft, 120 m2

Basement 1: 0 sq. ft, 0 m2, 1st floor: 222 sq. ft, 21 m2, 2nd floor: 507 sq. ft, 47 m2, 3rd floor: 563 sq. ft, 52 m2

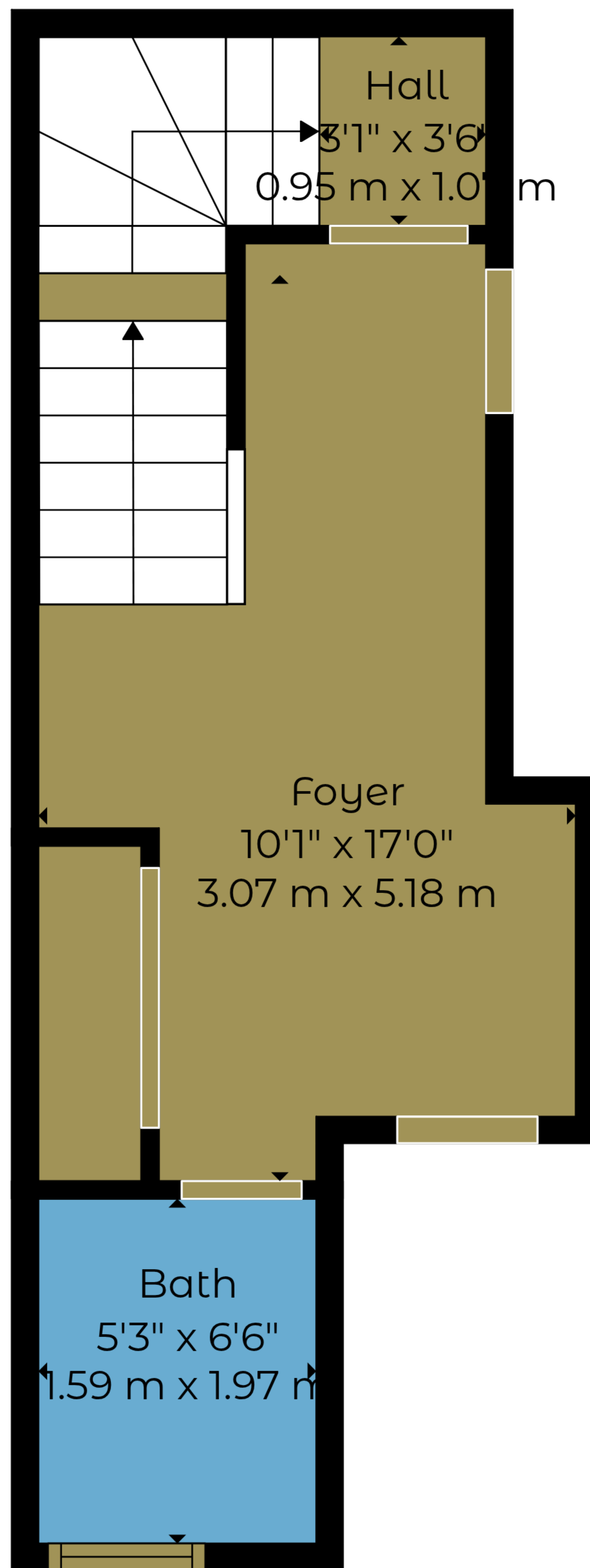
EXCLUDED AREAS: BASEMENT: 222 sq. ft, 21 m2, BALCONY: 56 sq. ft, 5 m2, STAIRWELL: 64 sq. ft, 6 m2,

OPEN TO BELOW: 9 sq. ft, 1 m2, WALLS: 153 sq. ft, 14 m2

FULLTONE / 360

Measurements Deemed Highly Reliable But Not Guaranteed.





TOTAL: 1292 sq. ft, 120 m²

Basement 1: 0 sq. ft, 0 m², 1st floor: 222 sq. ft, 21 m², 2nd floor: 507 sq. ft, 47 m², 3rd floor: 563 sq. ft, 52 m²

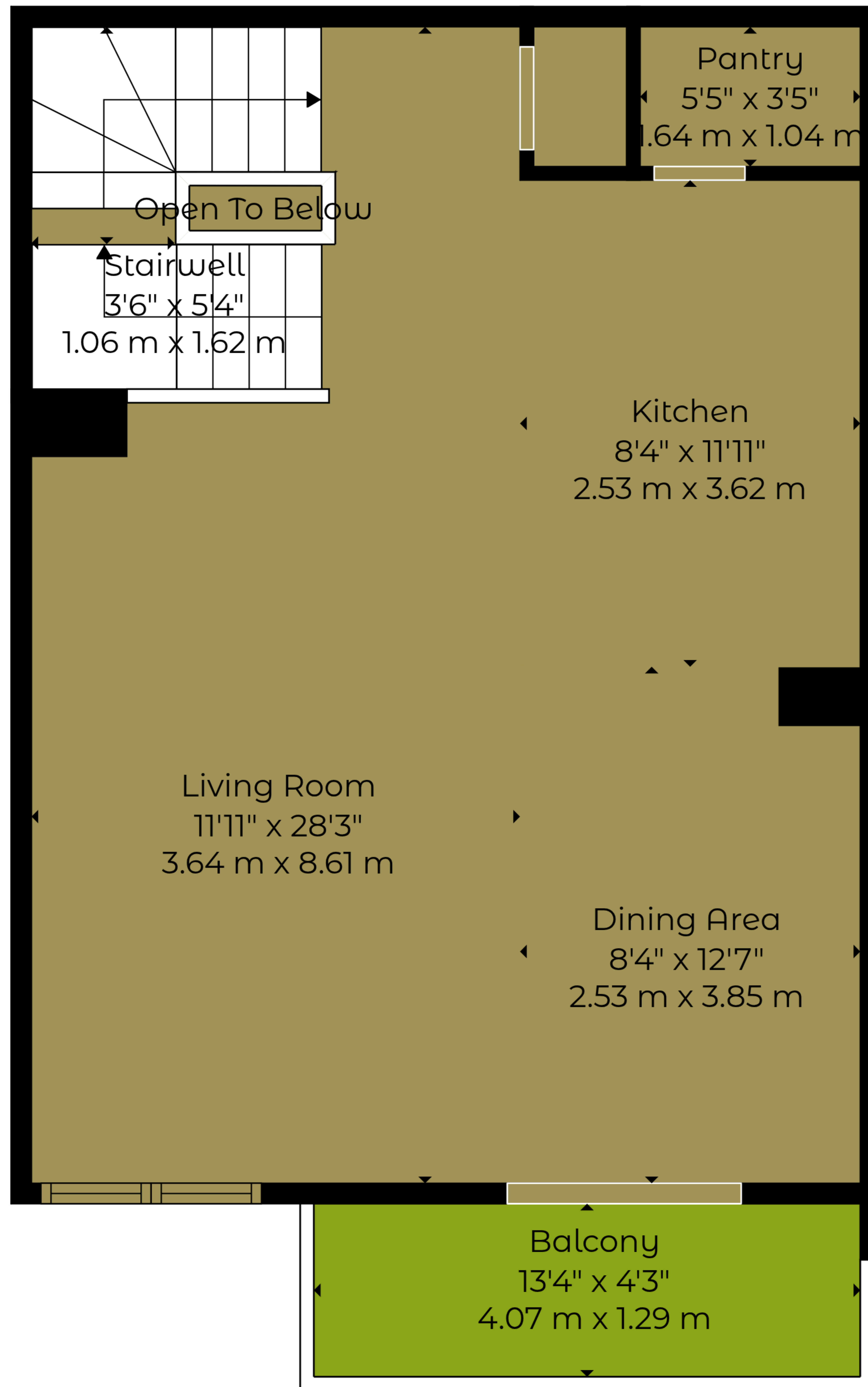
EXCLUDED AREAS: BASEMENT: 222 sq. ft, 21 m², BALCONY: 56 sq. ft, 5 m², STAIRWELL: 64 sq. ft, 6 m²,

OPEN TO BELOW: 9 sq. ft, 1 m², WALLS: 153 sq. ft, 14 m²

FULLTONE / 360

Measurements Deemed Highly Reliable But Not Guaranteed.





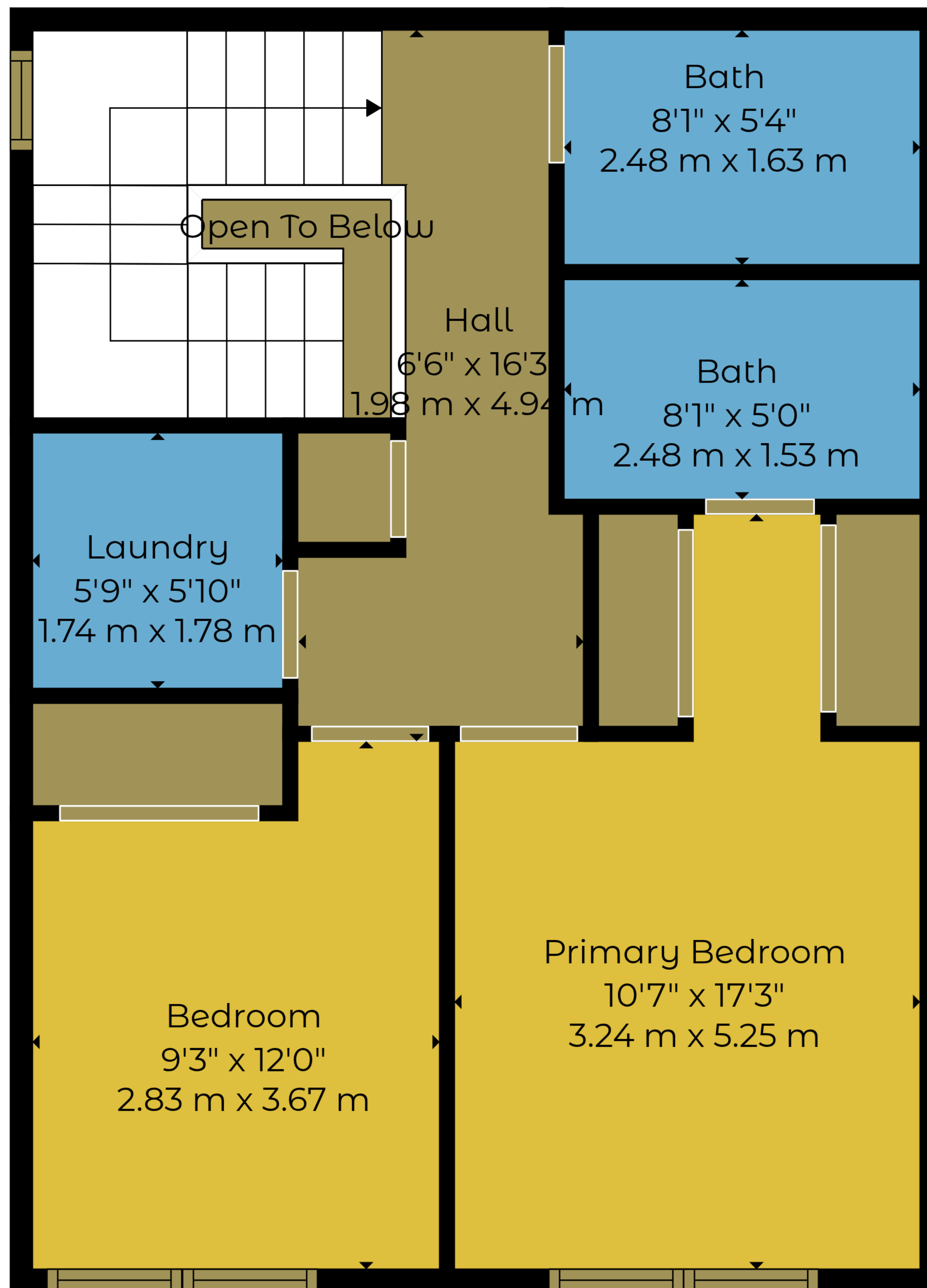
TOTAL: 1292 sq. ft, 120 m2

Basement 1: 0 sq. ft, 0 m2, 1st floor: 222 sq. ft, 21 m2, 2nd floor: 507 sq. ft, 47 m2, 3rd floor: 563 sq. ft, 52 m2

EXCLUDED AREAS: BASEMENT: 222 sq. ft, 21 m2, BALCONY: 56 sq. ft, 5 m2, STAIRWELL: 64 sq. ft, 6 m2,

OPEN TO BELOW: 9 sq. ft, 1 m2, WALLS: 153 sq. ft, 14 m2





TOTAL: 1292 sq. ft, 120 m2

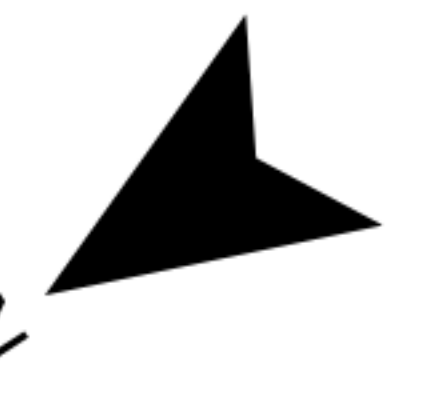
Basement 1: 0 sq. ft, 0 m2, 1st floor: 222 sq. ft, 21 m2, 2nd floor: 507 sq. ft, 47 m2, 3rd floor: 563 sq. ft, 52 m2

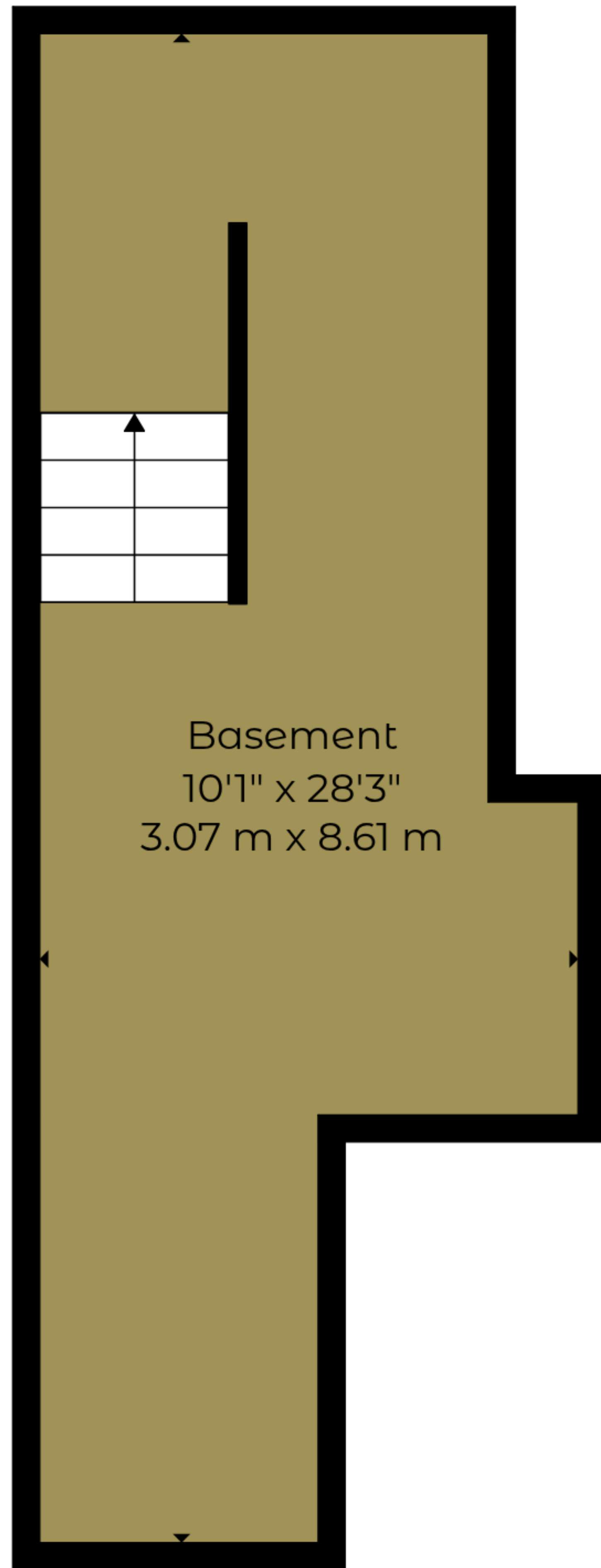
EXCLUDED AREAS: BASEMENT: 222 sq. ft, 21 m2, BALCONY: 56 sq. ft, 5 m2, STAIRWELL: 64 sq. ft, 6 m2,

OPEN TO BELOW: 9 sq. ft, 1 m2, WALLS: 153 sq. ft, 14 m2

FULLTONE / 360

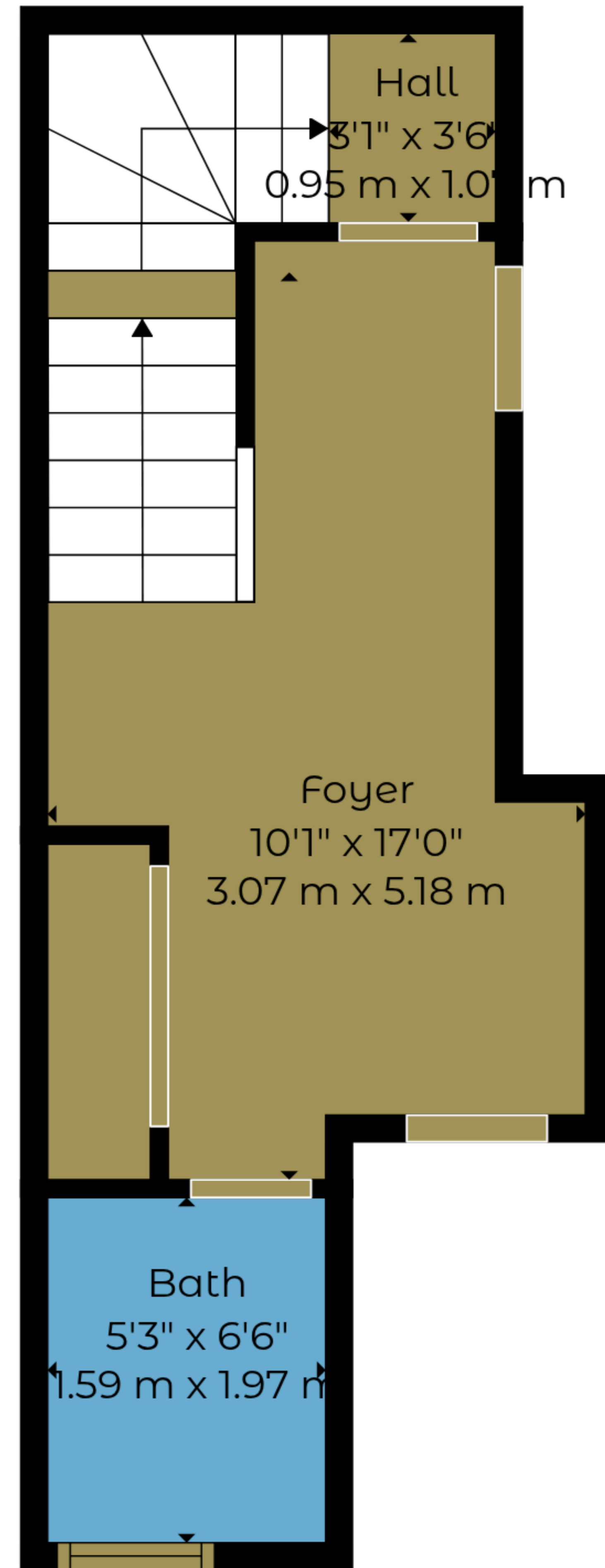
Measurements Deemed Highly Reliable But Not Guaranteed.





Basement
10'1" x 28'3"
3.07 m x 8.61 m

Basement 1



Hall
3'1" x 3'6"
0.95 m x 1.07 m

Foyer
10'1" x 17'0"
3.07 m x 5.18 m

Bath
5'3" x 6'6"
1.59 m x 1.97 m

1st Floor



Pantry
5'5" x 3'5"
1.64 m x 1.04 m

Stairwell
3'6" x 5'4"
1.06 m x 1.62 m

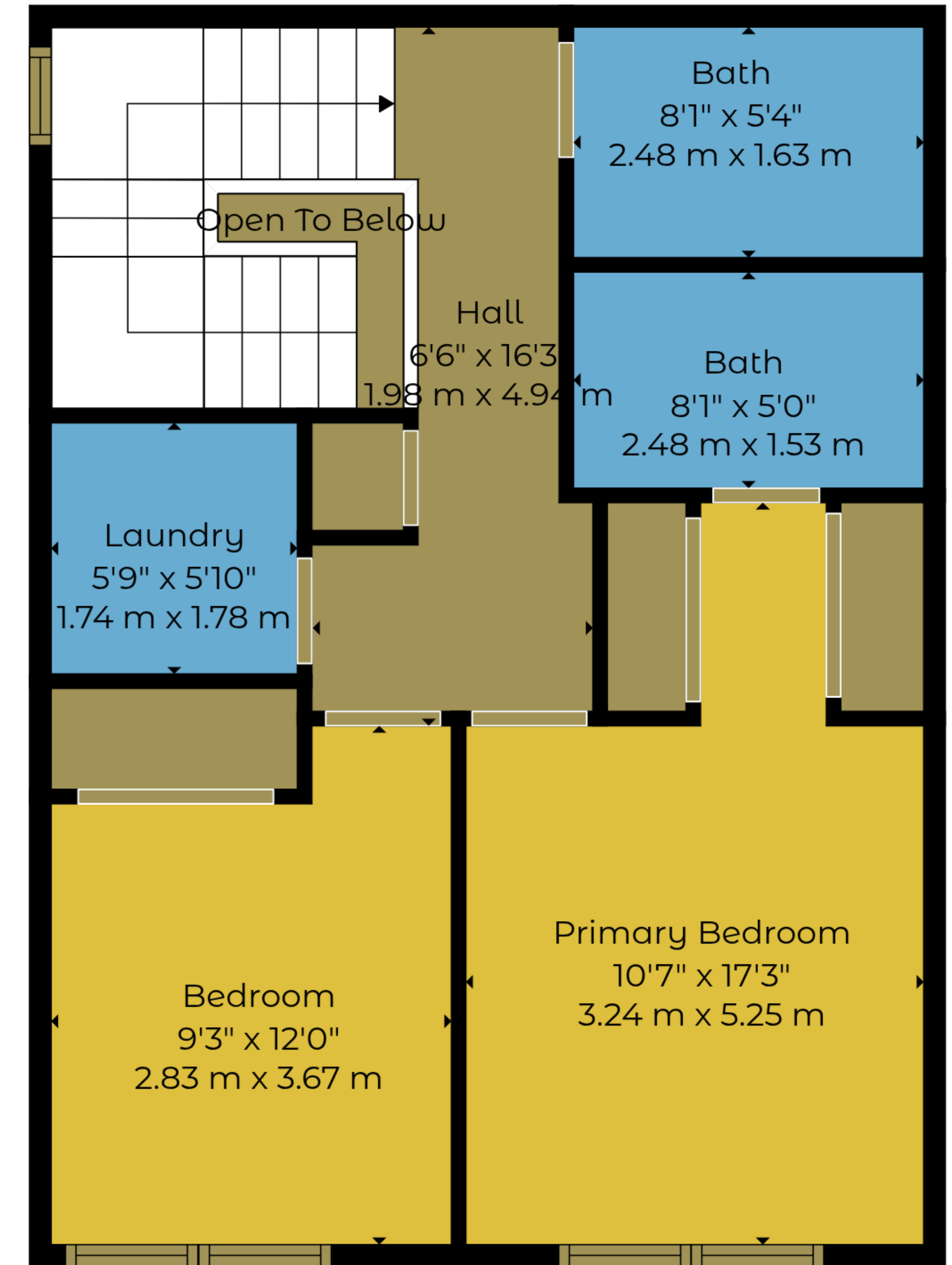
Living Room
11'11" x 28'3"
3.64 m x 8.61 m

Dining Area
8'4" x 12'7"
2.53 m x 3.85 m

Kitchen
8'4" x 11'11"
2.53 m x 3.62 m

Balcony
13'4" x 4'3"
4.07 m x 1.29 m

2nd Floor



Bath
8'1" x 5'4"
2.48 m x 1.63 m

Bath
8'1" x 5'0"
2.48 m x 1.53 m

Laundry
5'9" x 5'10"
1.74 m x 1.78 m

Bedroom
9'3" x 12'0"
2.83 m x 3.67 m

Primary Bedroom
10'7" x 17'3"
3.24 m x 5.25 m

Hall
6'6" x 16'3"
1.98 m x 4.94 m

3rd Floor

TOTAL: 1292 sq. ft, 120 m2

Basement 1: 0 sq. ft, 0 m2, 1st floor: 222 sq. ft, 21 m2, 2nd floor: 507 sq. ft, 47 m2, 3rd floor: 563 sq. ft, 52 m2

EXCLUDED AREAS: BASEMENT: 222 sq. ft, 21 m2, BALCONY: 56 sq. ft, 5 m2, STAIRWELL: 64 sq. ft, 6 m2,

OPEN TO BELOW: 9 sq. ft, 1 m2, WALLS: 153 sq. ft, 14 m2

FULLTONE / 360

Measurements Deemed Highly Reliable But Not Guaranteed.

