

Home report

42 Sandy Valley Road, Marstons Mills, Barnstable County,
Massachusetts, United States, 02648




Total Area: 2167 sq. ft

Below Ground: 926 sq. ft, Floor 2: 1241 sq. ft

Excluded: Patio 264 sq. ft, Porch 23 sq. ft, Embedded window 8 sq. ft, Walls: 147 sq. ft

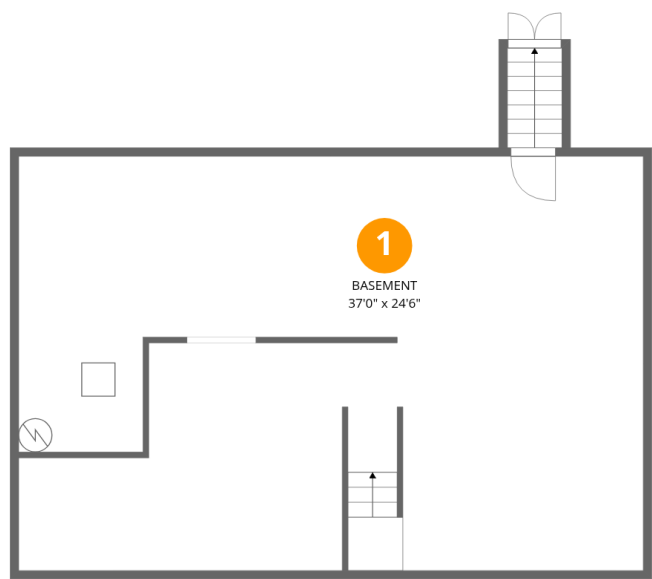
Property summary

 **2** Floors

 **3** Bedrooms

 **3** Bathrooms

42 Sandy Valley Road, Marstons Mills, Barnstable County,
Massachusetts, United States, 02648



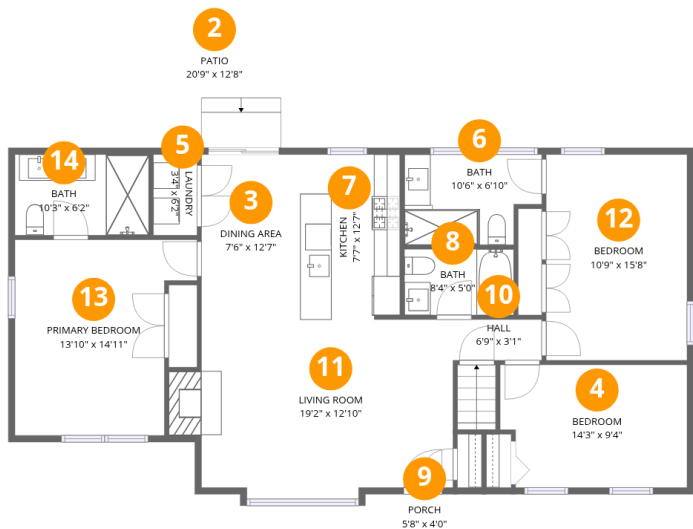
Room dimensions

Floor 1 Below ground Total:926sqft Excluded: 0sqft

#		Max Dimensions	sqft	Included
1	Basement	37'0" x 24'6"	893 sq. ft	Yes

Home report

42 Sandy Valley Road, Marstons Mills, Barnstable County,
Massachusetts, United States, 02648



Room dimensions

Floor 2 Total:1241sqft Excluded: 295sqft

#		Max Dimensions	sqft	Included
2	Patio	20'9" x 12'8"	264 sq. ft	No
3	Dining Area	7'6" x 12'7"	95 sq. ft	Yes
4	Bedroom	14'3" x 9'4"	128 sq. ft	Yes
5	Laundry	3'4" x 6'2"	20 sq. ft	Yes
6	Bath	10'6" x 6'10"	65 sq. ft	Yes
7	Kitchen	7'7" x 12'7"	95 sq. ft	Yes
8	Bath	8'4" x 5'0"	42 sq. ft	Yes
9	Porch	5'8" x 4'0"	23 sq. ft	No
10	Hall	6'9" x 3'1"	21 sq. ft	Yes
11	Living Room	19'2" x 12'10"	257 sq. ft	Yes
12	Bedroom	10'9" x 15'8"	168 sq. ft	Yes

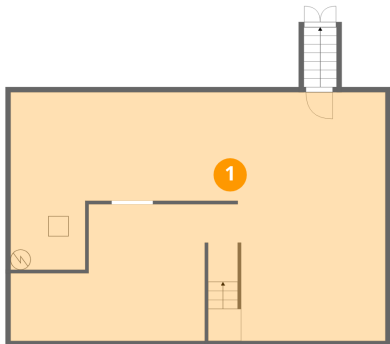
Home report

42 Sandy Valley Road, Marstons Mills, Barnstable County,
Massachusetts, United States, 02648

#		Max Dimensions	sqft	Included
13	Primary Bedroom	13'10" x 14'11"	177 sq. ft	Yes
14	Bath	10'3" x 6'2"	63 sq. ft	Yes

42 Sandy Valley Road, Marstons Mills, Barnstable County,
Massachusetts, United States, 02648

1 Floor 1 - Basement



Max Dimensions: 37'0" x 24'6"
Calculated Area: 893 sq. ft
Included: Yes

Heated: Yes
Finished: Yes
Enclosed: Yes
Contiguous: Yes
Permitted: Yes
Wet space: No
Addition: No
Conversion: No

2 Floor 2 - Patio

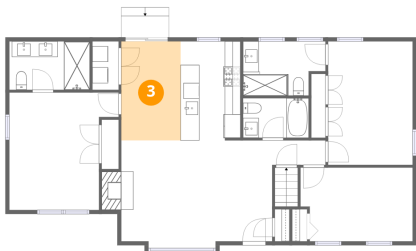


Max Dimensions: 20'9" x 12'8"
Calculated Area: 264 sq. ft
Included: No

Heated: No
Finished: No
Enclosed: No
Contiguous: Yes
Permitted: Yes
Wet space: No
Addition: No
Conversion: No

42 Sandy Valley Road, Marstons Mills, Barnstable County,
Massachusetts, United States, 02648

3 Floor 2 - Dining Area



Max Dimensions: 7'6" x 12'7"
Calculated Area: 95 sq. ft
Included: Yes

Heated: Yes
Finished: Yes
Enclosed: Yes
Contiguous: Yes
Permitted: Yes
Wet space: No
Addition: No
Conversion: No

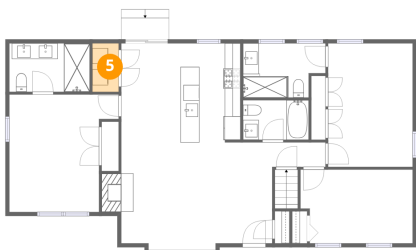
4 Floor 2 - Bedroom



Max Dimensions: 14'3" x 9'4"
Calculated Area: 128 sq. ft
Included: Yes

Heated: Yes
Finished: Yes
Enclosed: Yes
Contiguous: Yes
Permitted: Yes
Wet space: No
Addition: No
Conversion: No

5 Floor 2 - Laundry

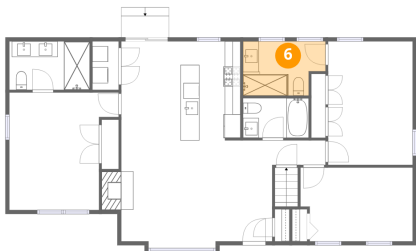


Max Dimensions: 3'4" x 6'2"
Calculated Area: 20 sq. ft
Included: Yes

Heated: Yes
Finished: Yes
Enclosed: Yes
Contiguous: Yes
Permitted: Yes
Wet space: No
Addition: No
Conversion: No

42 Sandy Valley Road, Marstons Mills, Barnstable County,
Massachusetts, United States, 02648

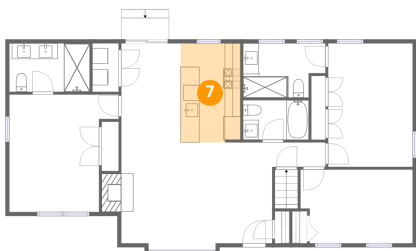
6 Floor 2 - Bath



Max Dimensions: 10'6" x 6'10"
Calculated Area: 65 sq. ft
Included: Yes

Heated: Yes
Finished: Yes
Enclosed: Yes
Contiguous: Yes
Permitted: Yes
Wet space: Yes
Addition: No
Conversion: No

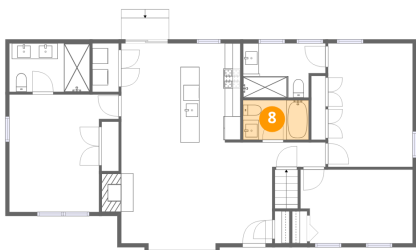
7 Floor 2 - Kitchen



Max Dimensions: 7'7" x 12'7"
Calculated Area: 95 sq. ft
Included: Yes

Heated: Yes
Finished: Yes
Enclosed: Yes
Contiguous: Yes
Permitted: Yes
Wet space: No
Addition: No
Conversion: No

8 Floor 2 - Bath



Max Dimensions: 8'4" x 5'0"
Calculated Area: 42 sq. ft
Included: Yes

Heated: Yes
Finished: Yes
Enclosed: Yes
Contiguous: Yes
Permitted: Yes
Wet space: Yes
Addition: No
Conversion: No

42 Sandy Valley Road, Marstons Mills, Barnstable County,
Massachusetts, United States, 02648

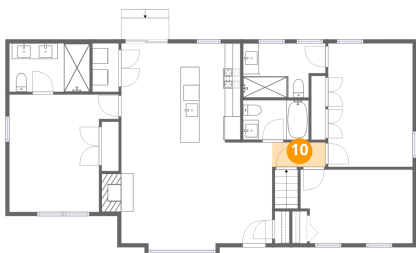
9 Floor 2 - Porch



Max Dimensions: 5'8" x 4'0"
Calculated Area: 23 sq. ft
Included: No

Heated: No
Finished: No
Enclosed: No
Contiguous: Yes
Permitted: Yes
Wet space: No
Addition: No
Conversion: No

10 Floor 2 - Hall



Max Dimensions: 6'9" x 3'1"
Calculated Area: 21 sq. ft
Included: Yes

Heated: Yes
Finished: Yes
Enclosed: Yes
Contiguous: Yes
Permitted: Yes
Wet space: No
Addition: No
Conversion: No

11 Floor 2 - Living Room



Max Dimensions: 19'2" x 12'10"
Calculated Area: 257 sq. ft
Included: Yes

Heated: Yes
Finished: Yes
Enclosed: Yes
Contiguous: Yes
Permitted: Yes
Wet space: No
Addition: No
Conversion: No

42 Sandy Valley Road, Marstons Mills, Barnstable County,
Massachusetts, United States, 02648

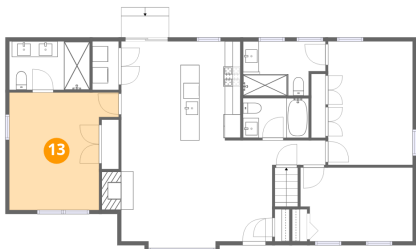
12 Floor 2 - Bedroom



Max Dimensions: 10'9" x 15'8"
Calculated Area: 168 sq. ft
Included: Yes

Heated: Yes
Finished: Yes
Enclosed: Yes
Contiguous: Yes
Permitted: Yes
Wet space: No
Addition: No
Conversion: No

13 Floor 2 - Primary Bedroom



Max Dimensions: 13'10" x 14'11"
Calculated Area: 177 sq. ft
Included: Yes

Heated: Yes
Finished: Yes
Enclosed: Yes
Contiguous: Yes
Permitted: Yes
Wet space: No
Addition: No
Conversion: No

14 Floor 2 - Bath



Max Dimensions: 10'3" x 6'2"
Calculated Area: 63 sq. ft
Included: Yes

Heated: Yes
Finished: Yes
Enclosed: Yes
Contiguous: Yes
Permitted: Yes
Wet space: Yes
Addition: No
Conversion: No