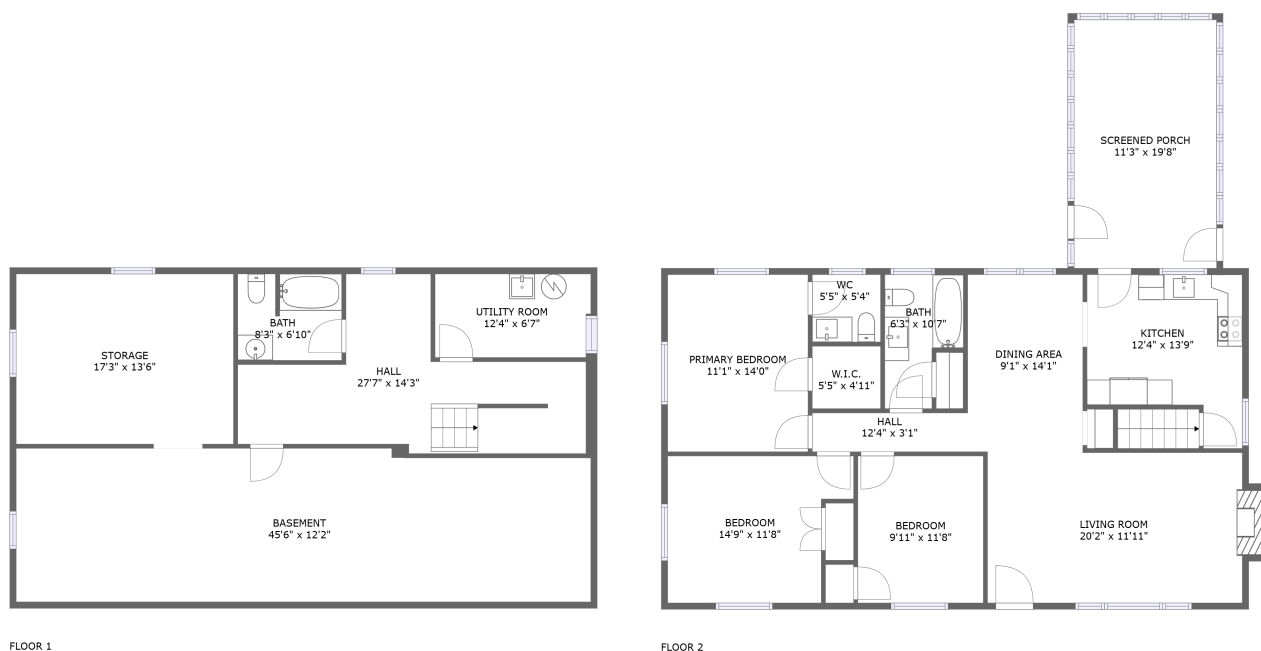


Home report

**4931 Keithwood Drive Southwest, Roanoke, Virginia 24018,
United States**



Total Area: 1584 sq. ft

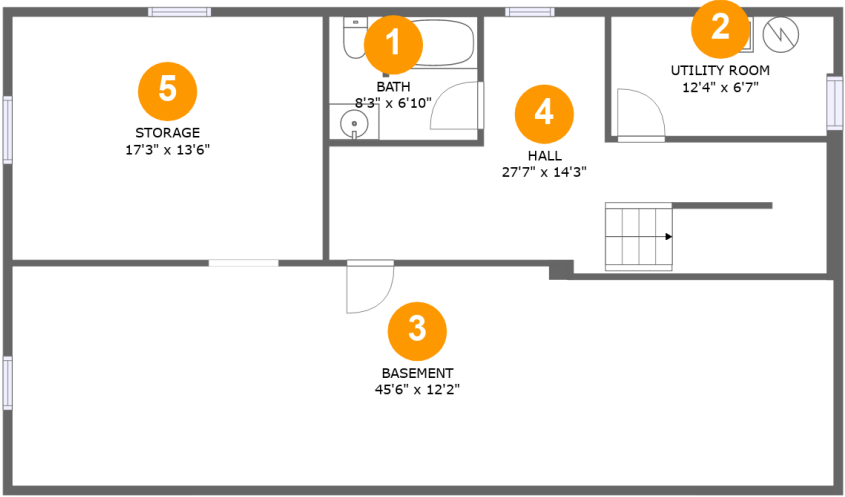
Below Ground: 398 sq. ft, Floor 2: 1186 sq. ft

Excluded: Basement 548 sq. ft, Storage 232 sq. ft, Screened porch 222 sq. ft, Fireplace 10 sq. ft, Walls: 174 sq. ft

Property summary



4931 Keithwood Drive Southwest, Roanoke, Virginia 24018,
United States

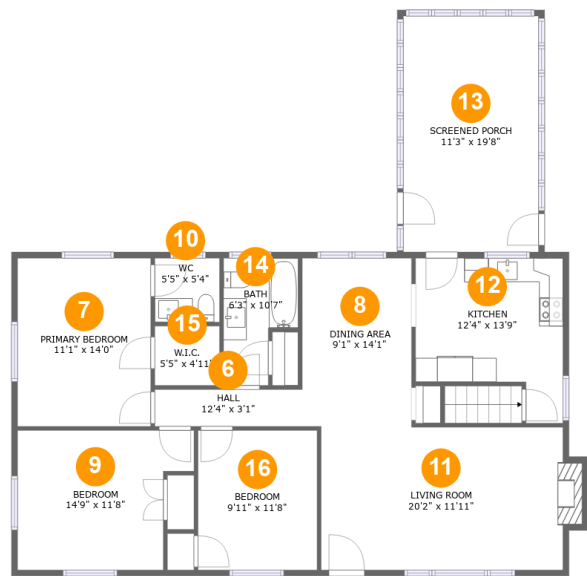


Room dimensions

Floor 1 Below ground Total:398sqft Excluded: 780sqft

#		Max Dimensions	sqft	Included
1	Bath	8'3" x 6'10"	55 sq. ft	Yes
2	Utility Room	12'4" x 6'7"	80 sq. ft	Yes
3	Basement	45'6" x 12'2"	543 sq. ft	No
4	Hall	27'7" x 14'3"	235 sq. ft	Yes
5	Storage	17'3" x 13'6"	232 sq. ft	No

4931 Keithwood Drive Southwest, Roanoke, Virginia 24018, United States



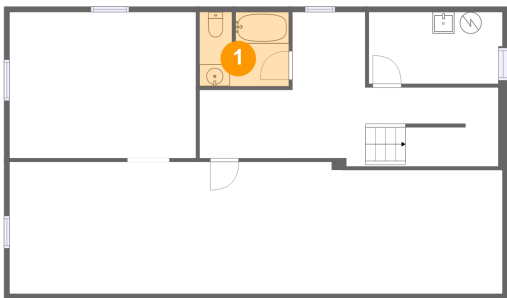
Room dimensions

Floor 2 Total:1186sqft Excluded: 232sqft

#		Max Dimensions	sqft	Included
6	Hall	12'4" x 3'1"	38 sq. ft	Yes
7	Primary Bedroom	11'1" x 14'0"	156 sq. ft	Yes
8	Dining Area	9'1" x 14'1"	128 sq. ft	Yes
9	Bedroom	14'9" x 11'8"	150 sq. ft	Yes
10	WC	5'5" x 5'4"	29 sq. ft	Yes
11	Living Room	20'2" x 11'11"	249 sq. ft	Yes
12	Kitchen	12'4" x 13'9"	138 sq. ft	Yes
13	Screened Porch	11'3" x 19'8"	222 sq. ft	No
14	Bath	6'3" x 10'7"	54 sq. ft	Yes
15	W.I.C.	5'5" x 4'11"	27 sq. ft	Yes
16	Bedroom	9'11" x 11'8"	116 sq. ft	Yes

4931 Keithwood Drive Southwest, Roanoke, Virginia 24018,
United States

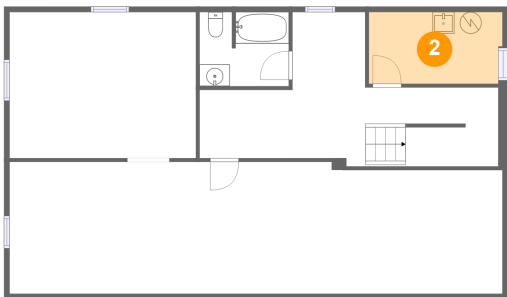
1 Floor 1 - Bath



Max Dimensions: 8'3" x 6'10"
Calculated Area: 55 sq. ft
Included: Yes

Heated: Yes
Finished: Yes
Enclosed: Yes
Contiguous: Yes
Permitted: Yes
Wet space: Yes
Addition: No
Conversion: No

2 Floor 1 - Utility Room

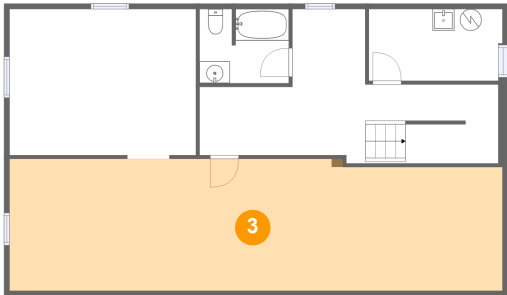


Max Dimensions: 12'4" x 6'7"
Calculated Area: 80 sq. ft
Included: Yes

Heated: Yes
Finished: Yes
Enclosed: Yes
Contiguous: Yes
Permitted: Yes
Wet space: No
Addition: No
Conversion: No

4931 Keithwood Drive Southwest, Roanoke, Virginia 24018,
United States

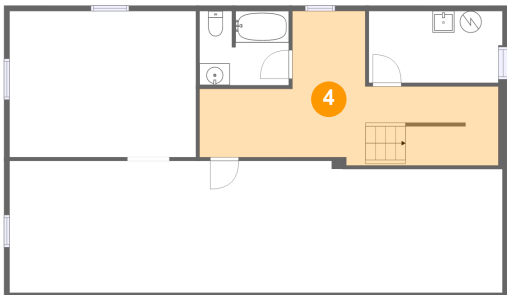
3 Floor 1 - Basement



Max Dimensions: 45'6" x 12'2"
Calculated Area: 543 sq. ft
Included: No

Heated: Yes
Finished: No
Enclosed: Yes
Contiguous: Yes
Permitted: Yes
Wet space: No
Addition: No
Conversion: No

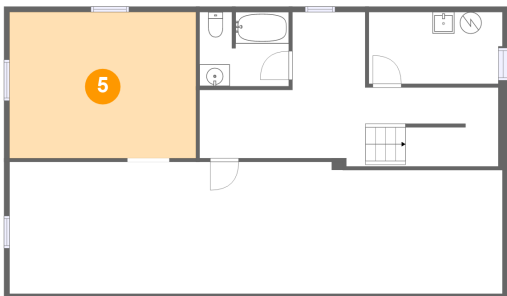
4 Floor 1 - Hall



Max Dimensions: 27'7" x 14'3"
Calculated Area: 235 sq. ft
Included: Yes

Heated: Yes
Finished: Yes
Enclosed: Yes
Contiguous: Yes
Permitted: Yes
Wet space: No
Addition: No
Conversion: No

5 Floor 1 - Storage



Max Dimensions: 17'3" x 13'6"
Calculated Area: 232 sq. ft
Included: No

Heated: No
Finished: No
Enclosed: No
Contiguous: Yes
Permitted: Yes
Wet space: No
Addition: No
Conversion: No

4931 Keithwood Drive Southwest, Roanoke, Virginia 24018,
United States

6 Floor 2 - Hall



Max Dimensions: 12'4" x 3'1"
Calculated Area: 38 sq. ft
Included: Yes

Heated: Yes
Finished: Yes
Enclosed: Yes
Contiguous: Yes
Permitted: Yes
Wet space: No
Addition: No
Conversion: No

7 Floor 2 - Primary Bedroom



Max Dimensions: 11'1" x 14'0"
Calculated Area: 156 sq. ft
Included: Yes

Heated: Yes
Finished: Yes
Enclosed: Yes
Contiguous: Yes
Permitted: Yes
Wet space: No
Addition: No
Conversion: No

8 Floor 2 - Dining Area



Max Dimensions: 9'1" x 14'1"
Calculated Area: 128 sq. ft
Included: Yes

Heated: Yes
Finished: Yes
Enclosed: Yes
Contiguous: Yes
Permitted: Yes
Wet space: No
Addition: No
Conversion: No

4931 Keithwood Drive Southwest, Roanoke, Virginia 24018,
United States

9 Floor 2 - Bedroom



Max Dimensions: 14'9" x 11'8"
Calculated Area: 150 sq. ft
Included: Yes

Heated: Yes
Finished: Yes
Enclosed: Yes
Contiguous: Yes
Permitted: Yes
Wet space: No
Addition: No
Conversion: No

10 Floor 2 - WC



Max Dimensions: 5'5" x 5'4"
Calculated Area: 29 sq. ft
Included: Yes

Heated: Yes
Finished: Yes
Enclosed: Yes
Contiguous: Yes
Permitted: Yes
Wet space: Yes
Addition: No
Conversion: No

11 Floor 2 - Living Room



Max Dimensions: 20'2" x 11'11"
Calculated Area: 249 sq. ft
Included: Yes

Heated: Yes
Finished: Yes
Enclosed: Yes
Contiguous: Yes
Permitted: Yes
Wet space: No
Addition: No
Conversion: No

4931 Keithwood Drive Southwest, Roanoke, Virginia 24018,
United States

12 Floor 2 - Kitchen



Max Dimensions: 12'4" x 13'9"
Calculated Area: 138 sq. ft
Included: Yes

Heated: Yes
Finished: Yes
Enclosed: Yes
Contiguous: Yes
Permitted: Yes
Wet space: No
Addition: No
Conversion: No

13 Floor 2 - Screened Porch



Max Dimensions: 11'3" x 19'8"
Calculated Area: 222 sq. ft
Included: No

Heated: No
Finished: Yes
Enclosed: No
Contiguous: Yes
Permitted: Yes
Wet space: No
Addition: No
Conversion: No

14 Floor 2 - Bath



Max Dimensions: 6'3" x 10'7"
Calculated Area: 54 sq. ft
Included: Yes

Heated: Yes
Finished: Yes
Enclosed: Yes
Contiguous: Yes
Permitted: Yes
Wet space: Yes
Addition: No
Conversion: No

4931 Keithwood Drive Southwest, Roanoke, Virginia 24018,
United States

15 Floor 2 - W.I.C.



Max Dimensions: 5'5" x 4'11"
Calculated Area: 27 sq. ft
Included: Yes

Heated: Yes
Finished: Yes
Enclosed: Yes
Contiguous: Yes
Permitted: Yes
Wet space: No
Addition: No
Conversion: No

16 Floor 2 - Bedroom



Max Dimensions: 9'11" x 11'8"
Calculated Area: 116 sq. ft
Included: Yes

Heated: Yes
Finished: Yes
Enclosed: Yes
Contiguous: Yes
Permitted: Yes
Wet space: No
Addition: No
Conversion: No