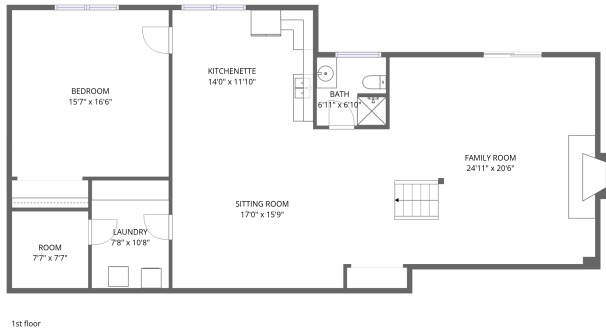


Home data report

**3 Set-N-Sun Drive, Hope, Providence County, Rhode Island,
United States, 02831**

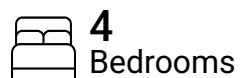


Total Area: 3196 sq. ft

1st Floor: 1423 sq. ft, 2nd Floor: 1773 sq. ft

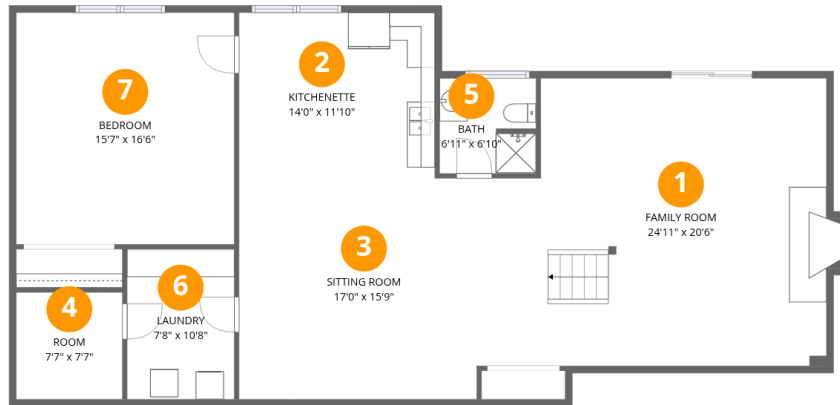
Excluded: Garage 508 sq. ft, Fireplace 5 sq. ft, Walls: 219 sq. ft

Property summary



Home data report

3 Set-N-Sun Drive, Hope, Providence County, Rhode Island, United States, 02831



Room dimensions

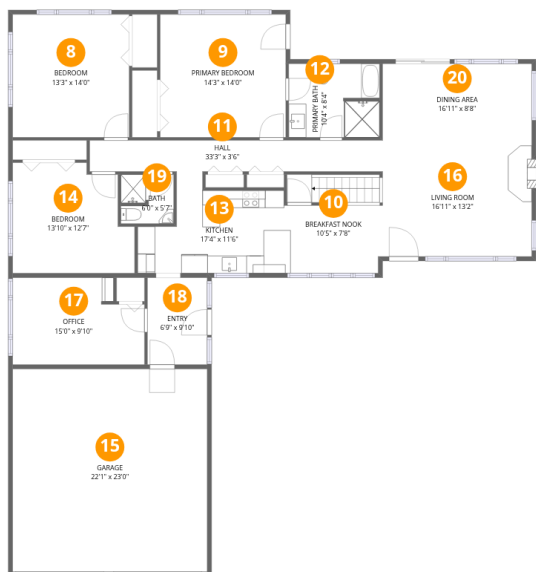
Floor 1

Total:1423sqft Excluded: 0sqft

#		Dimensions	sqft	Counted as living area
1	Family Room	24'11" x 20'6"	512 sq. ft	Yes
2	Kitchenette	14'0" x 11'10"	165 sq. ft	Yes
3	Sitting Room	17'0" x 15'9"	267 sq. ft	Yes
4	Room	7'7" x 7'7"	58 sq. ft	Yes
5	Bath	6'11" x 6'10"	47 sq. ft	Yes
6	Laundry	7'8" x 10'8"	82 sq. ft	Yes
7	Bedroom	15'7" x 16'6"	257 sq. ft	Yes

Home data report

3 Set-N-Sun Drive, Hope, Providence County, Rhode Island, United States, 02831



Room dimensions

Floor 2

Total:1773sqft Excluded: 513sqft

#		Dimensions	sqft	Counted as living area
8	Bedroom	13'3" x 14'0"	185 sq. ft	Yes
9	Primary Bedroom	14'3" x 14'0"	199 sq. ft	Yes
10	Breakfast Nook	10'5" x 7'8"	80 sq. ft	Yes
11	Hall	33'3" x 3'6"	117 sq. ft	Yes
12	Primary Bath	10'4" x 8'4"	86 sq. ft	Yes
13	Kitchen	17'4" x 11'6"	200 sq. ft	Yes
14	Bedroom	13'10" x 12'7"	174 sq. ft	Yes
15	Garage	22'1" x 23'0"	508 sq. ft	No
16	Living Room	16'11" x 13'2"	223 sq. ft	Yes
17	Office	15'0" x 9'10"	148 sq. ft	Yes
18	Entry	6'9" x 9'10"	67 sq. ft	Yes

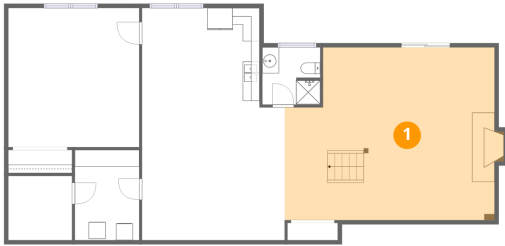
Home data report

**3 Set-N-Sun Drive, Hope, Providence County, Rhode Island,
United States, 02831**

#		Dimensions	sqft	Counted as living area
19	Bath	6'0" x 5'7"	33 sq. ft	Yes
20	Dining Area	16'11" x 8'8"	147 sq. ft	Yes

**3 Set-N-Sun Drive, Hope, Providence County, Rhode Island,
United States, 02831**

1 Floor 1 - Family Room



Dimensions: 24'11" x 20'6"
Area: 512 sq. ft
Counted as living area: Yes

Heated: Yes
Finished: Yes
Enclosed: Yes
Contiguous: Yes
Permitted: Yes
Wet space: No
Addition: No
Conversion: No

2 Floor 1 - Kitchenette

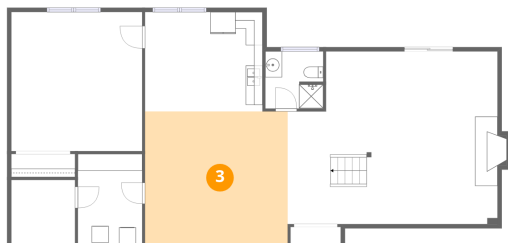


Dimensions: 14'0" x 11'10"
Area: 165 sq. ft
Counted as living area: Yes

Heated: Yes
Finished: Yes
Enclosed: Yes
Contiguous: Yes
Permitted: Yes
Wet space: No
Addition: No
Conversion: No

3 Set-N-Sun Drive, Hope, Providence County, Rhode Island,
United States, 02831

3 Floor 1 - Sitting Room



Dimensions: 17'0" x 15'9"
Area: 267 sq. ft
Counted as living area: Yes

Heated: Yes
Finished: Yes
Enclosed: Yes
Contiguous: Yes
Permitted: Yes
Wet space: No
Addition: No
Conversion: No

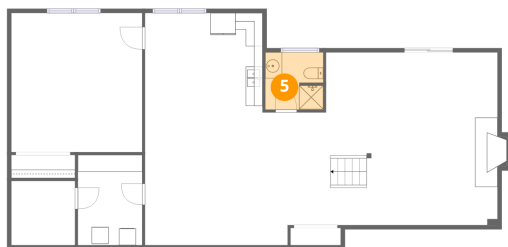
4 Floor 1 - Room



Dimensions: 7'7" x 7'7"
Area: 58 sq. ft
Counted as living area: Yes

Heated: Yes
Finished: Yes
Enclosed: Yes
Contiguous: Yes
Permitted: Yes
Wet space: No
Addition: No
Conversion: No

5 Floor 1 - Bath



Dimensions: 6'11" x 6'10"
Area: 47 sq. ft
Counted as living area: Yes

Heated: Yes
Finished: Yes
Enclosed: Yes
Contiguous: Yes
Permitted: Yes
Wet space: Yes
Addition: No
Conversion: No

3 Set-N-Sun Drive, Hope, Providence County, Rhode Island, United States, 02831

6 Floor 1 - Laundry



Dimensions: 7'8" x 10'8"
Area: 82 sq. ft
Counted as living area: Yes

Heated: Yes
Finished: Yes
Enclosed: Yes
Contiguous: Yes
Permitted: Yes
Wet space: No
Addition: No
Conversion: No

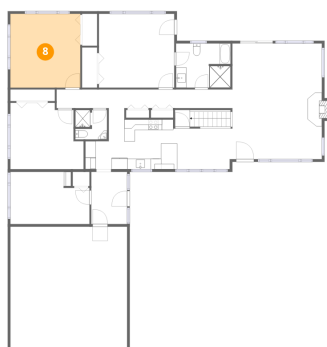
7 Floor 1 - Bedroom



Dimensions: 15'7" x 16'6"
Area: 257 sq. ft
Counted as living area: Yes

Heated: Yes
Finished: Yes
Enclosed: Yes
Contiguous: Yes
Permitted: Yes
Wet space: No
Addition: No
Conversion: No

8 Floor 2 - Bedroom

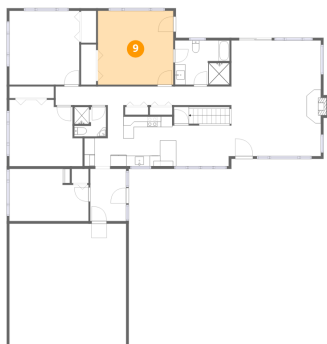


Dimensions: 13'3" x 14'0"
Area: 185 sq. ft
Counted as living area: Yes

Heated: Yes
Finished: Yes
Enclosed: Yes
Contiguous: Yes
Permitted: Yes
Wet space: No
Addition: No
Conversion: No

3 Set-N-Sun Drive, Hope, Providence County, Rhode Island, United States, 02831

9 Floor 2 - Primary Bedroom



Dimensions: 14'3" x 14'0"
Area: 199 sq. ft
Counted as living area: Yes

Heated: Yes
Finished: Yes
Enclosed: Yes
Contiguous: Yes
Permitted: Yes
Wet space: No
Addition: No
Conversion: No

10 Floor 2 - Breakfast Nook



Dimensions: 10'5" x 7'8"
Area: 80 sq. ft
Counted as living area: Yes

Heated: Yes
Finished: Yes
Enclosed: Yes
Contiguous: Yes
Permitted: Yes
Wet space: No
Addition: No
Conversion: No

11 Floor 2 - Hall



Dimensions: 33'3" x 3'6"
Area: 117 sq. ft
Counted as living area: Yes

Heated: Yes
Finished: Yes
Enclosed: Yes
Contiguous: Yes
Permitted: Yes
Wet space: No
Addition: No
Conversion: No

3 Set-N-Sun Drive, Hope, Providence County, Rhode Island,
United States, 02831

12 Floor 2 - Primary Bath



Dimensions: 10'4" x 8'4"
Area: 86 sq. ft
Counted as living area: Yes

Heated: Yes
Finished: Yes
Enclosed: Yes
Contiguous: Yes
Permitted: Yes
Wet space: Yes
Addition: No
Conversion: No

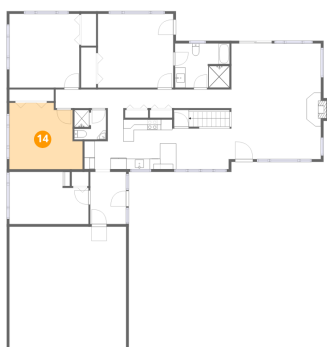
13 Floor 2 - Kitchen



Dimensions: 17'4" x 11'6"
Area: 200 sq. ft
Counted as living area: Yes

Heated: Yes
Finished: Yes
Enclosed: Yes
Contiguous: Yes
Permitted: Yes
Wet space: No
Addition: No
Conversion: No

14 Floor 2 - Bedroom

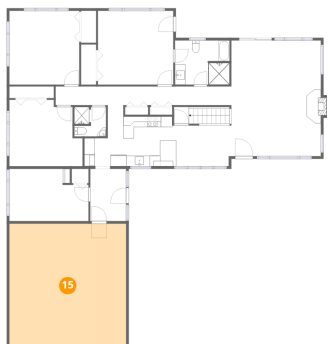


Dimensions: 13'10" x 12'7"
Area: 174 sq. ft
Counted as living area: Yes

Heated: Yes
Finished: Yes
Enclosed: Yes
Contiguous: Yes
Permitted: Yes
Wet space: No
Addition: No
Conversion: No

3 Set-N-Sun Drive, Hope, Providence County, Rhode Island,
United States, 02831

15 Floor 2 - Garage



Dimensions: 22'1" x 23'0"
Area: 508 sq. ft
Counted as living area: No

Heated: No
Finished: No
Enclosed: Yes
Contiguous: Yes
Permitted: Yes
Wet space: No
Addition: No
Conversion: No

16 Floor 2 - Living Room



Dimensions: 16'11" x 13'2"
Area: 223 sq. ft
Counted as living area: Yes

Heated: Yes
Finished: Yes
Enclosed: Yes
Contiguous: Yes
Permitted: Yes
Wet space: No
Addition: No
Conversion: No

17 Floor 2 - Office

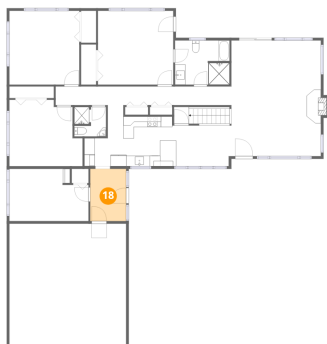


Dimensions: 15'0" x 9'10"
Area: 148 sq. ft
Counted as living area: Yes

Heated: Yes
Finished: Yes
Enclosed: Yes
Contiguous: Yes
Permitted: Yes
Wet space: No
Addition: No
Conversion: No

3 Set-N-Sun Drive, Hope, Providence County, Rhode Island,
United States, 02831

18 Floor 2 - Entry



Dimensions: 6'9" x 9'10"
Area: 67 sq. ft
Counted as living area: Yes

Heated: Yes
Finished: Yes
Enclosed: Yes
Contiguous: Yes
Permitted: Yes
Wet space: No
Addition: No
Conversion: No

19 Floor 2 - Bath



Dimensions: 6'0" x 5'7"
Area: 33 sq. ft
Counted as living area: Yes

Heated: Yes
Finished: Yes
Enclosed: Yes
Contiguous: Yes
Permitted: Yes
Wet space: Yes
Addition: No
Conversion: No

20 Floor 2 - Dining Area



Dimensions: 16'11" x 8'8"
Area: 147 sq. ft
Counted as living area: Yes

Heated: Yes
Finished: Yes
Enclosed: Yes
Contiguous: Yes
Permitted: Yes
Wet space: No
Addition: No
Conversion: No