

Home data report

14850 Creek Lane, Athens, Limestone County,
Alabama, United States, 35613



Total Area: 4027 sq. ft

1st Floor: 2613 sq. ft, 2nd Floor: 1414 sq. ft

Excluded: Garage 463 sq. ft, Porch 36 sq. ft, Deck 161 sq. ft, Undefined 14 sq. ft, Attic 186 sq. ft, Low ceiling 173 sq. ft, Open to below 88 sq. ft

Property summary



Scan captured on Tue, 16 Dec 2025 19:52:10 GMT

FLOOR PLAN CREATED BY CUBICASA APP. MEASUREMENTS DEEMED HIGHLY RELIABLE BUT NOT GUARANTEED.

Home data report

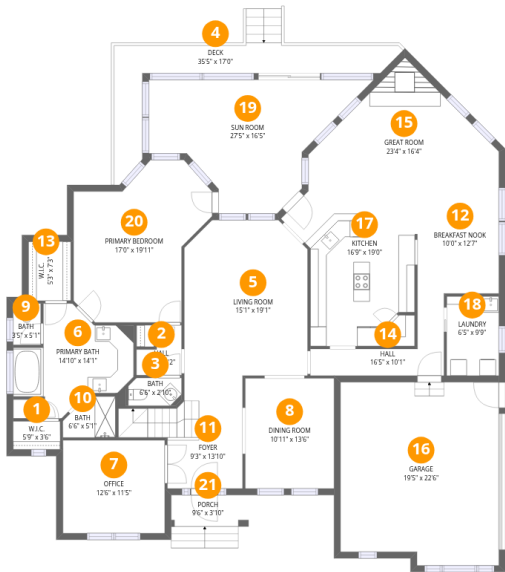
**14850 Creek Lane, Athens, Limestone County,
Alabama, United States, 35613**



1
Half baths



1
Garages



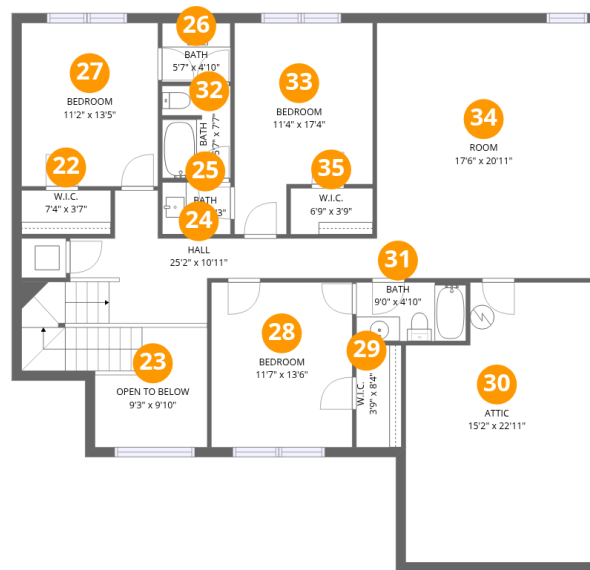
Room dimensions

Floor 1 Total:2613sqft Excluded: 660sqft

#		Dimensions	sqft	Counted as living area
1	W.I.C.	5'9" x 3'6"	20 sq. ft	Yes
2	Hall	5'6" x 6'2"	27 sq. ft	Yes
3	Bath	6'6" x 2'10"	21 sq. ft	Yes
4	Deck	35'5" x 17'0"	161 sq. ft	No
5	Living Room	15'1" x 19'1"	276 sq. ft	Yes
6	Primary Bath	14'10" x 14'1"	139 sq. ft	Yes
7	Office	12'6" x 11'5"	142 sq. ft	Yes
8	Dining Room	10'11" x 13'6"	147 sq. ft	Yes
9	Bath	3'5" x 5'1"	17 sq. ft	Yes
10	Bath	6'6" x 5'1"	28 sq. ft	Yes
11	Foyer	9'3" x 13'10"	141 sq. ft	Yes



#		Dimensions	sqft	Counted as living area
12	Breakfast Nook	10'0" x 12'7"	125 sq. ft	Yes
13	W.I.C.	5'3" x 7'3"	38 sq. ft	Yes
14	Hall	16'5" x 10'1"	76 sq. ft	Yes
15	Great Room	23'4" x 16'4"	245 sq. ft	Yes
16	Garage	19'5" x 22'6"	421 sq. ft	No
17	Kitchen	16'9" x 19'0"	246 sq. ft	Yes
18	Laundry	6'5" x 9'9"	62 sq. ft	Yes
19	Sun Room	27'5" x 16'5"	288 sq. ft	Yes
20	Primary Bedroom	17'0" x 19'11"	257 sq. ft	Yes
21	Porch	9'6" x 3'10"	35 sq. ft	No



Room dimensions

Floor 2

Total:1414sqft Excluded: 461sqft

#		Dimensions	sqft	Counted as living area
22	W.I.C.	7'4" x 3'7"	26 sq. ft	Yes
23	Open To Below	9'3" x 9'10"	75 sq. ft	No
24	Hall	25'2" x 10'11"	193 sq. ft	Yes
25	Bath	5'7" x 4'3"	24 sq. ft	Yes
26	Bath	5'7" x 4'10"	27 sq. ft	Yes
27	Bedroom	11'2" x 13'5"	150 sq. ft	Yes
28	Bedroom	11'7" x 13'6"	156 sq. ft	Yes
29	W.I.C.	3'9" x 8'4"	31 sq. ft	Yes
30	Attic	15'2" x 22'11"	186 sq. ft	No
31	Bath	9'0" x 4'10"	43 sq. ft	Yes
32	Bath	5'7" x 7'7"	41 sq. ft	Yes

Home data report

**14850 Creek Lane, Athens, Limestone County,
Alabama, United States, 35613**



#		Dimensions	sqft	Counted as living area
33	Bedroom	11'4" x 17'4"	167 sq. ft	Yes
34	Room	17'6" x 20'11"	367 sq. ft	Yes
35	W.I.C.	6'9" x 3'9"	25 sq. ft	Yes



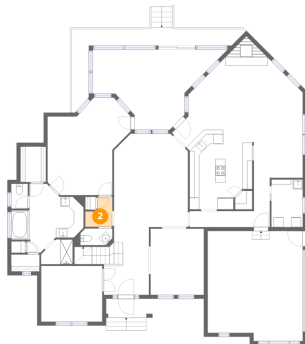
1 Floor 1 - W.I.C.



Dimensions: 5'9" x 3'6"
Area: 20 sq. ft
Counted as living area: Yes

Heated: Yes
Finished: Yes
Enclosed: Yes
Contiguous: Yes
Permitted: Yes
Wet space: No
Addition: No
Conversion: No

2 Floor 1 - Hall



Dimensions: 5'6" x 6'2"
Area: 27 sq. ft
Counted as living area: Yes

Heated: Yes
Finished: Yes
Enclosed: Yes
Contiguous: Yes
Permitted: Yes
Wet space: No
Addition: No
Conversion: No



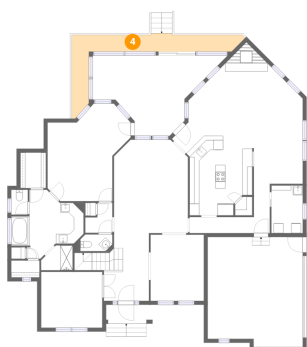
3 Floor 1 - Bath



Dimensions: 6'6" x 2'10"
Area: 21 sq. ft
Counted as living area: Yes

Heated: Yes
Finished: Yes
Enclosed: Yes
Contiguous: Yes
Permitted: Yes
Wet space: Yes
Addition: No
Conversion: No

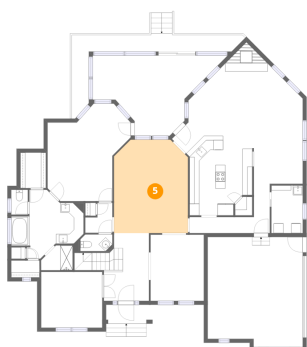
4 Floor 1 - Deck



Dimensions: 35'5" x 17'0"
Area: 161 sq. ft
Counted as living area: No

Heated: No
Finished: No
Enclosed: No
Contiguous: Yes
Permitted: Yes
Wet space: No
Addition: No
Conversion: No

5 Floor 1 - Living Room

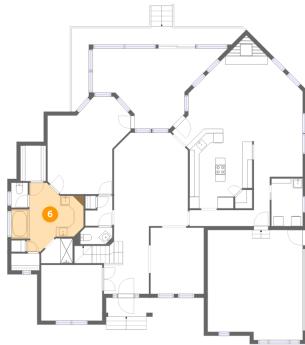


Dimensions: 15'1" x 19'1"
Area: 276 sq. ft
Counted as living area: Yes

Heated: Yes
Finished: Yes
Enclosed: Yes
Contiguous: Yes
Permitted: Yes
Wet space: No
Addition: No
Conversion: No



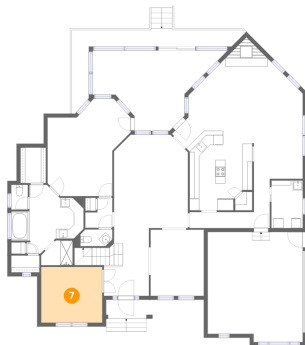
6 Floor 1 - Primary Bath



Dimensions: 14'10" x 14'1"
Area: 139 sq. ft
Counted as living area: Yes

Heated: Yes
Finished: Yes
Enclosed: Yes
Contiguous: Yes
Permitted: Yes
Wet space: Yes
Addition: No
Conversion: No

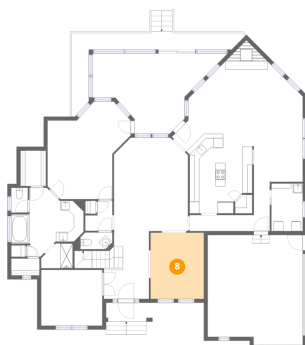
7 Floor 1 - Office



Dimensions: 12'6" x 11'5"
Area: 142 sq. ft
Counted as living area: Yes

Heated: Yes
Finished: Yes
Enclosed: Yes
Contiguous: Yes
Permitted: Yes
Wet space: No
Addition: No
Conversion: No

8 Floor 1 - Dining Room



Dimensions: 10'11" x 13'6"
Area: 147 sq. ft
Counted as living area: Yes

Heated: Yes
Finished: Yes
Enclosed: Yes
Contiguous: Yes
Permitted: Yes
Wet space: No
Addition: No
Conversion: No



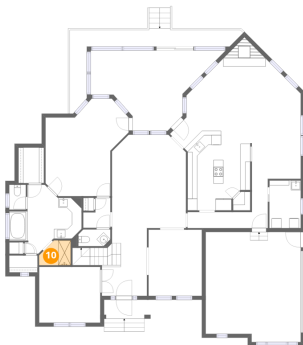
9 Floor 1 - Bath



Dimensions: 3'5" x 5'1"
Area: 17 sq. ft
Counted as living area: Yes

Heated: Yes
Finished: Yes
Enclosed: Yes
Contiguous: Yes
Permitted: Yes
Wet space: Yes
Addition: No
Conversion: No

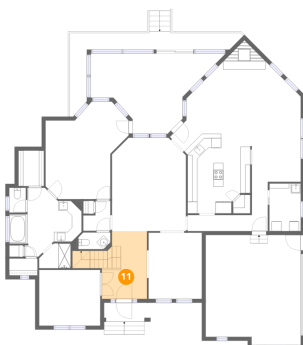
10 Floor 1 - Bath



Dimensions: 6'6" x 5'1"
Area: 28 sq. ft
Counted as living area: Yes

Heated: Yes
Finished: Yes
Enclosed: Yes
Contiguous: Yes
Permitted: Yes
Wet space: Yes
Addition: No
Conversion: No

11 Floor 1 - Foyer

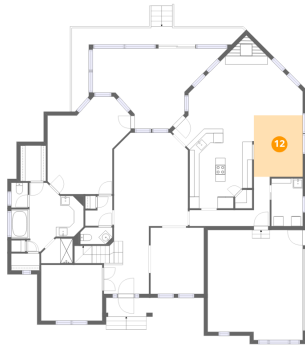


Dimensions: 9'3" x 13'10"
Area: 141 sq. ft
Counted as living area: Yes

Heated: Yes
Finished: Yes
Enclosed: Yes
Contiguous: Yes
Permitted: Yes
Wet space: No
Addition: No
Conversion: No



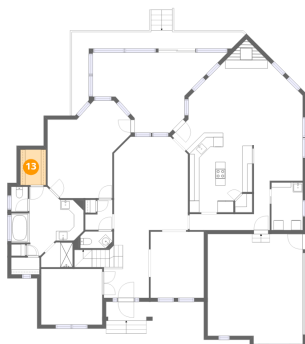
12 Floor 1 - Breakfast Nook



Dimensions: 10'0" x 12'7"
Area: 125 sq. ft
Counted as living area: Yes

Heated: Yes
Finished: Yes
Enclosed: Yes
Contiguous: Yes
Permitted: Yes
Wet space: No
Addition: No
Conversion: No

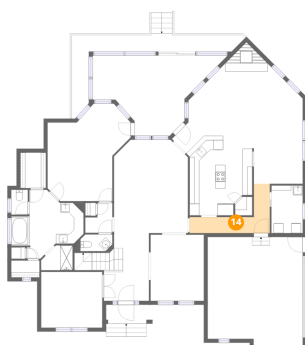
13 Floor 1 - W.I.C.



Dimensions: 5'3" x 7'3"
Area: 38 sq. ft
Counted as living area: Yes

Heated: Yes
Finished: Yes
Enclosed: Yes
Contiguous: Yes
Permitted: Yes
Wet space: No
Addition: No
Conversion: No

14 Floor 1 - Hall

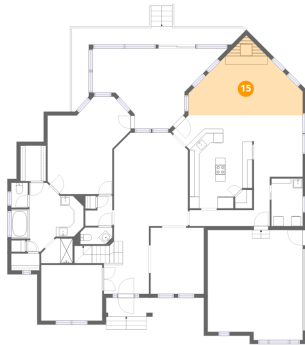


Dimensions: 16'5" x 10'1"
Area: 76 sq. ft
Counted as living area: Yes

Heated: Yes
Finished: Yes
Enclosed: Yes
Contiguous: Yes
Permitted: Yes
Wet space: No
Addition: No
Conversion: No



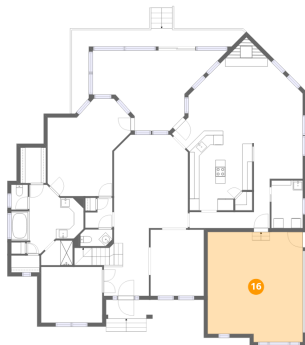
15 Floor 1 - Great Room



Dimensions: 23'4" x 16'4"
Area: 245 sq. ft
Counted as living area: Yes

Heated: Yes
Finished: Yes
Enclosed: Yes
Contiguous: Yes
Permitted: Yes
Wet space: No
Addition: No
Conversion: No

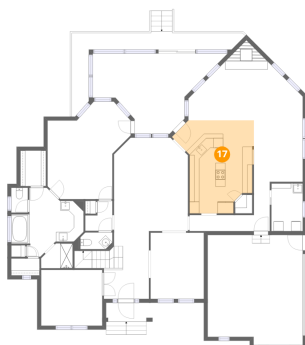
16 Floor 1 - Garage



Dimensions: 19'5" x 22'6"
Area: 421 sq. ft
Counted as living area: No

Heated: No
Finished: No
Enclosed: Yes
Contiguous: Yes
Permitted: Yes
Wet space: No
Addition: No
Conversion: No

17 Floor 1 - Kitchen



Dimensions: 16'9" x 19'0"
Area: 246 sq. ft
Counted as living area: Yes

Heated: Yes
Finished: Yes
Enclosed: Yes
Contiguous: Yes
Permitted: Yes
Wet space: No
Addition: No
Conversion: No



18 Floor 1 - Laundry



Dimensions: 6'5" x 9'9"
Area: 62 sq. ft
Counted as living area: Yes

Heated: Yes
Finished: Yes
Enclosed: Yes
Contiguous: Yes
Permitted: Yes
Wet space: No
Addition: No
Conversion: No

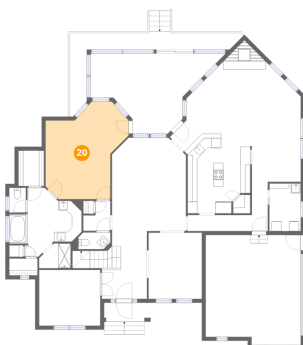
19 Floor 1 - Sun Room



Dimensions: 27'5" x 16'5"
Area: 288 sq. ft
Counted as living area: Yes

Heated: Yes
Finished: Yes
Enclosed: Yes
Contiguous: Yes
Permitted: Yes
Wet space: No
Addition: No
Conversion: No

20 Floor 1 - Primary Bedroom



Dimensions: 17'0" x 19'11"
Area: 257 sq. ft
Counted as living area: Yes

Heated: Yes
Finished: Yes
Enclosed: Yes
Contiguous: Yes
Permitted: Yes
Wet space: No
Addition: No
Conversion: No



21 Floor 1 - Porch



Dimensions: 9'6" x 3'10"
Area: 35 sq. ft
Counted as living area: No

Heated: No
Finished: No
Enclosed: No
Contiguous: Yes
Permitted: Yes
Wet space: No
Addition: No
Conversion: No

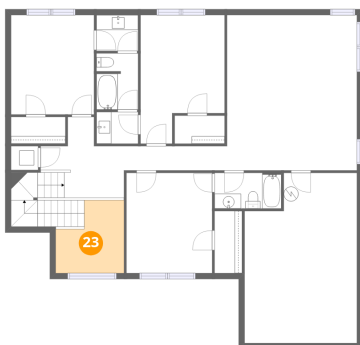
22 Floor 2 - W.I.C.



Dimensions: 7'4" x 3'7"
Area: 26 sq. ft
Counted as living area: Yes

Heated: Yes
Finished: Yes
Enclosed: Yes
Contiguous: Yes
Permitted: Yes
Wet space: No
Addition: No
Conversion: No

23 Floor 2 - Open To Below

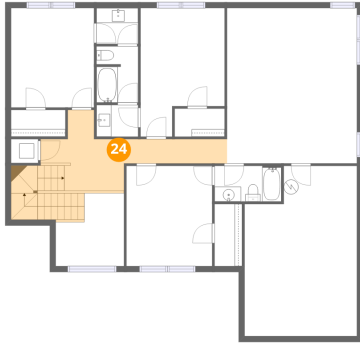


Dimensions: 9'3" x 9'10"
Area: 75 sq. ft
Counted as living area: No

Heated: No
Finished: No
Enclosed: No
Contiguous: Yes
Permitted: No
Wet space: No
Addition: No
Conversion: No



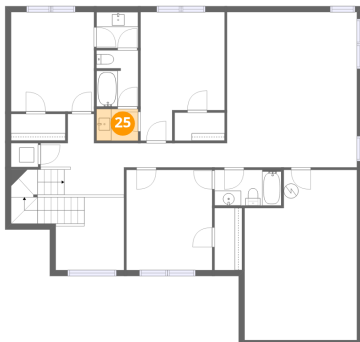
24 Floor 2 - Hall



Dimensions: 25'2" x 10'11"
Area: 193 sq. ft
Counted as living area: Yes

Heated: Yes
Finished: Yes
Enclosed: Yes
Contiguous: Yes
Permitted: Yes
Wet space: No
Addition: No
Conversion: No

25 Floor 2 - Bath



Dimensions: 5'7" x 4'3"
Area: 24 sq. ft
Counted as living area: Yes

Heated: Yes
Finished: Yes
Enclosed: Yes
Contiguous: Yes
Permitted: Yes
Wet space: Yes
Addition: No
Conversion: No

26 Floor 2 - Bath

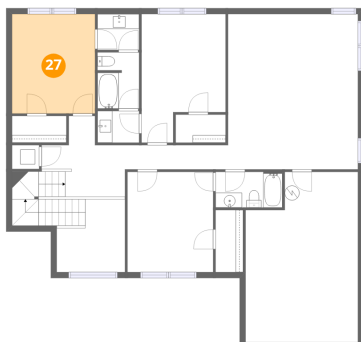


Dimensions: 5'7" x 4'10"
Area: 27 sq. ft
Counted as living area: Yes

Heated: Yes
Finished: Yes
Enclosed: Yes
Contiguous: Yes
Permitted: Yes
Wet space: Yes
Addition: No
Conversion: No



27 Floor 2 - Bedroom



Dimensions: 11'2" x 13'5"
Area: 150 sq. ft
Counted as living area: Yes

Heated: Yes
Finished: Yes
Enclosed: Yes
Contiguous: Yes
Permitted: Yes
Wet space: No
Addition: No
Conversion: No

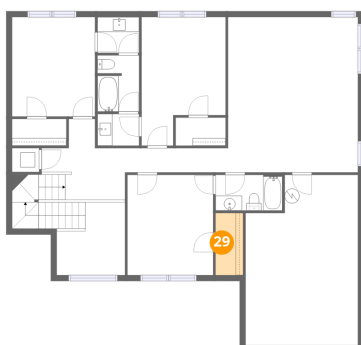
28 Floor 2 - Bedroom



Dimensions: 11'7" x 13'6"
Area: 156 sq. ft
Counted as living area: Yes

Heated: Yes
Finished: Yes
Enclosed: Yes
Contiguous: Yes
Permitted: Yes
Wet space: No
Addition: No
Conversion: No

29 Floor 2 - W.I.C.

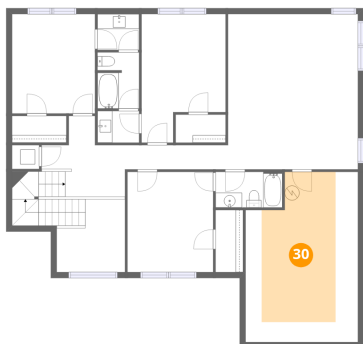


Dimensions: 3'9" x 8'4"
Area: 31 sq. ft
Counted as living area: Yes

Heated: Yes
Finished: Yes
Enclosed: Yes
Contiguous: Yes
Permitted: Yes
Wet space: No
Addition: No
Conversion: No



30 Floor 2 - Attic



Dimensions: 15'2" x 22'11"

Area: 186 sq. ft

Counted as living area: No

Heated: No

Finished: No

Enclosed: Yes

Contiguous: Yes

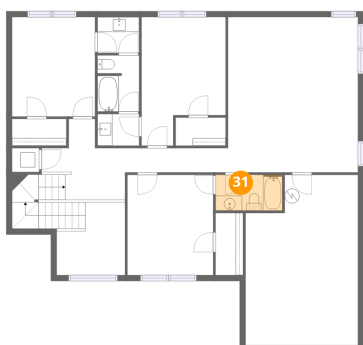
Permitted: Yes

Wet space: No

Addition: No

Conversion: No

31 Floor 2 - Bath



Dimensions: 9'0" x 4'10"

Area: 43 sq. ft

Counted as living area: Yes

Heated: Yes

Finished: Yes

Enclosed: Yes

Contiguous: Yes

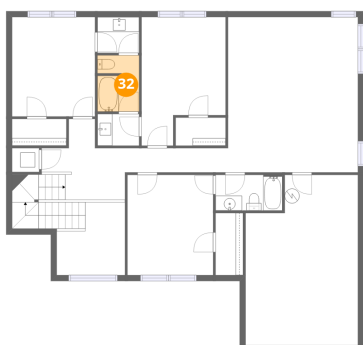
Permitted: Yes

Wet space: Yes

Addition: No

Conversion: No

32 Floor 2 - Bath



Dimensions: 5'7" x 7'7"

Area: 41 sq. ft

Counted as living area: Yes

Heated: Yes

Finished: Yes

Enclosed: Yes

Contiguous: Yes

Permitted: Yes

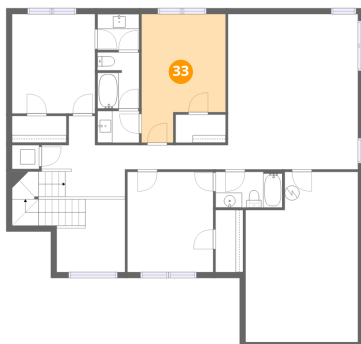
Wet space: Yes

Addition: No

Conversion: No



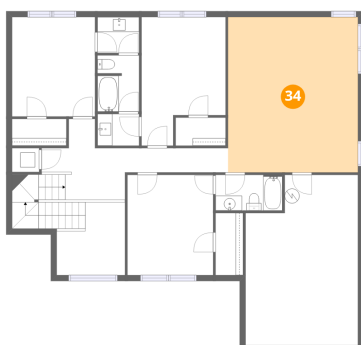
33 Floor 2 - Bedroom



Dimensions: 11'4" x 17'4"
Area: 167 sq. ft
Counted as living area: Yes

Heated: Yes
Finished: Yes
Enclosed: Yes
Contiguous: Yes
Permitted: Yes
Wet space: No
Addition: No
Conversion: No

34 Floor 2 - Room



Dimensions: 17'6" x 20'11"
Area: 367 sq. ft
Counted as living area: Yes

Heated: Yes
Finished: Yes
Enclosed: Yes
Contiguous: Yes
Permitted: Yes
Wet space: No
Addition: No
Conversion: No

35 Floor 2 - W.I.C.



Dimensions: 6'9" x 3'9"
Area: 25 sq. ft
Counted as living area: Yes

Heated: Yes
Finished: Yes
Enclosed: Yes
Contiguous: Yes
Permitted: Yes
Wet space: No
Addition: No
Conversion: No