

Home data report

109 Thurlow St, Georgetown, MA, US



Total Area: 3316 sq. ft

1st Floor: 783 sq. ft, 2nd Floor: 989 sq. ft, 3rd Floor: 514 sq. ft, 4th Floor: 1030 sq. ft, 5th Floor: 0 sq. ft

Excluded: Storage 200 sq. ft, Undefined 17 sq. ft, Garage 534 sq. ft, Porch 153 sq. ft, Deck 180 sq. ft, Fireplace 11 sq. ft, Attic 623 sq. ft, Walls: 341 sq. ft

Property summary

 **5** Floors

 **4** Bedrooms

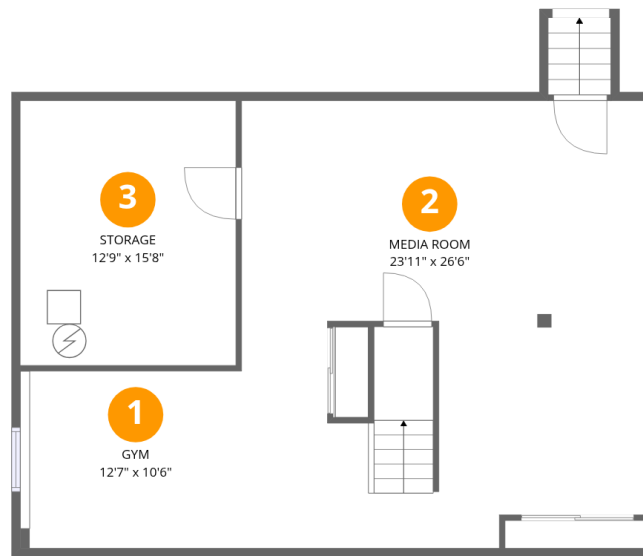
 **2** Bathrooms

Home data report

109 Thurlow St, Georgetown, MA, US

 **1**
Half baths

 **1**
Garages



Room dimensions

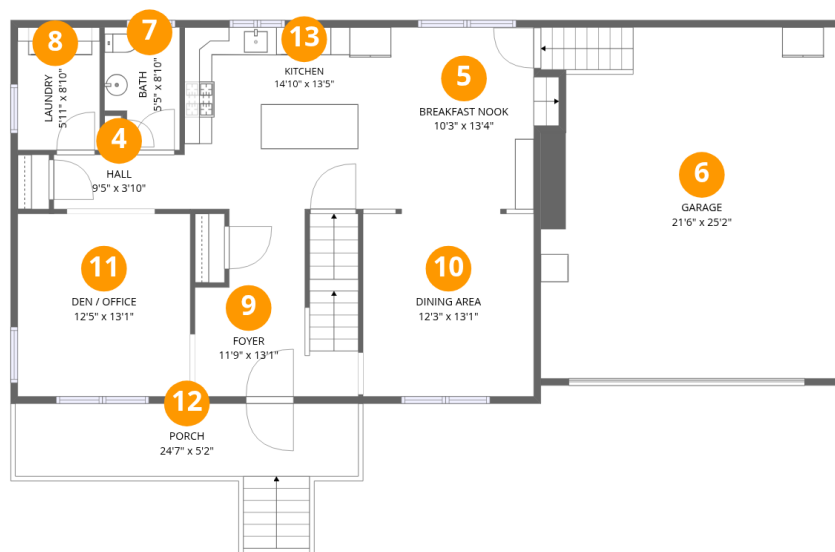
Floor 1

Total:783sqft

Excluded: 217sqft

#		Dimensions	sqft	Counted as living area
1	Gym	12'7" x 10'6"	138 sq. ft	Yes
2	Media Room	23'11" x 26'6"	617 sq. ft	Yes
3	Storage	12'9" x 15'8"	200 sq. ft	No

109 Thurlow St, Georgetown, MA, US



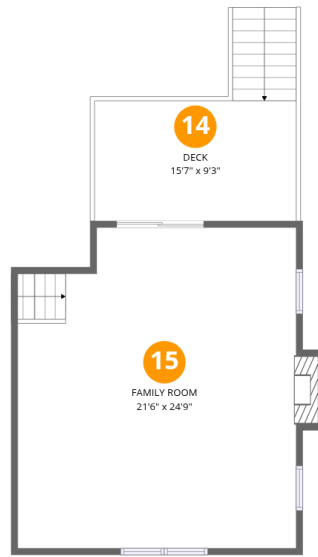
Room dimensions

Floor 2

Total: 989 sqft

Excluded: 687 sqft

#		Dimensions	sqft	Counted as living area
4	Hall	9'5" x 3'10"	37 sq. ft	Yes
5	Breakfast Nook	10'3" x 13'4"	144 sq. ft	Yes
6	Garage	21'6" x 25'2"	534 sq. ft	No
7	Bath	5'5" x 8'10"	43 sq. ft	Yes
8	Laundry	5'11" x 8'10"	52 sq. ft	Yes
9	Foyer	11'9" x 13'1"	139 sq. ft	Yes
10	Dining Area	12'3" x 13'1"	161 sq. ft	Yes
11	Den / Office	12'5" x 13'1"	163 sq. ft	Yes
12	Porch	24'7" x 5'2"	153 sq. ft	No
13	Kitchen	14'10" x 13'5"	196 sq. ft	Yes



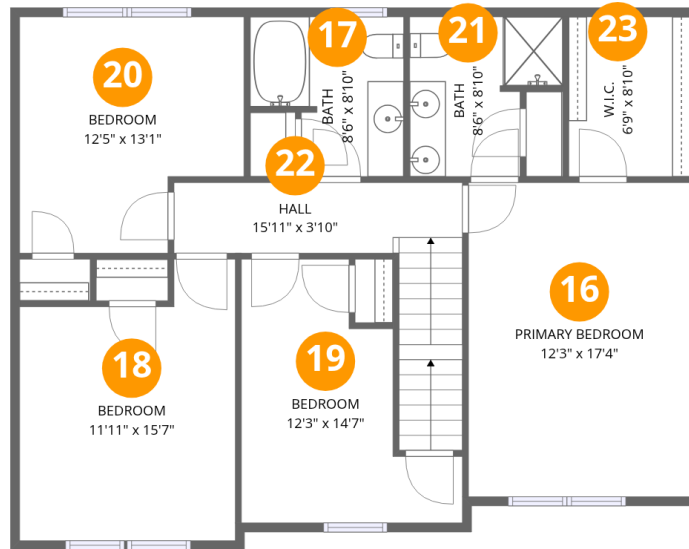
Room dimensions

Floor 3

Total: 514 sqft

Excluded: 191 sqft

#		Dimensions	sqft	Counted as living area
14	Deck	15'7" x 9'3"	180 sq. ft	No
15	Family Room	21'6" x 24'9"	520 sq. ft	Yes



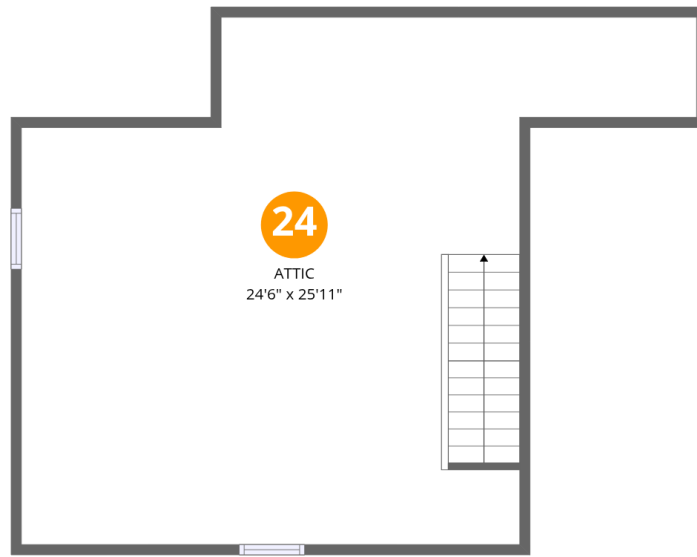
Room dimensions

Floor 4

Total: 1030 sqft

Excluded: 0 sqft

#		Dimensions	sqft	Counted as living area
16	Primary Bedroom	12'3" x 17'4"	213 sq. ft	Yes
17	Bath	8'6" x 8'10"	64 sq. ft	Yes
18	Bedroom	11'11" x 15'7"	163 sq. ft	Yes
19	Bedroom	12'3" x 14'7"	127 sq. ft	Yes
20	Bedroom	12'5" x 13'1"	144 sq. ft	Yes
21	Bath	8'6" x 8'10"	62 sq. ft	Yes
22	Hall	15'11" x 3'10"	100 sq. ft	Yes
23	W.I.C.	6'9" x 8'10"	59 sq. ft	Yes



Room dimensions

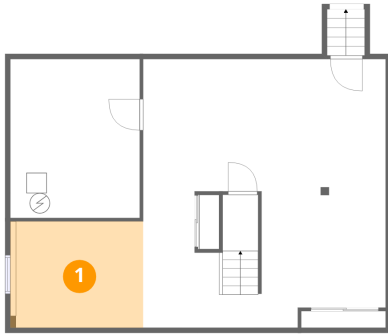
Floor 5

Total: 0sqft

Excluded: 623sqft

#		Dimensions	sqft	Counted as living area
24	Attic	24'6" x 25'11"	622 sq. ft	No

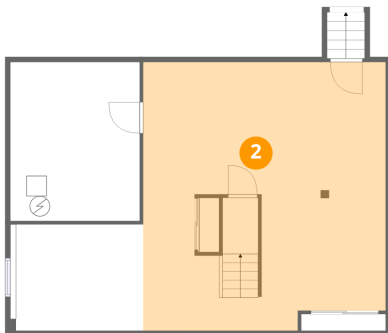
1 Floor 1 - Gym



Dimensions: 12'7" x 10'6"
Area: 138 sq. ft
Counted as living area: Yes

Heated: Yes
Finished: Yes
Enclosed: Yes
Contiguous: Yes
Permitted: Yes
Wet space: No
Addition: No
Conversion: No

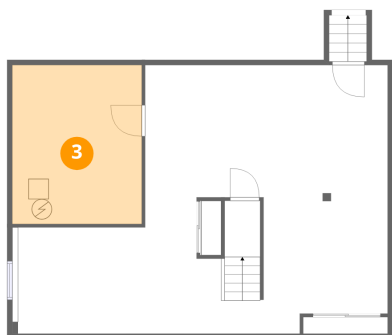
2 Floor 1 - Media Room



Dimensions: 23'11" x 26'6"
Area: 617 sq. ft
Counted as living area: Yes

Heated: Yes
Finished: Yes
Enclosed: Yes
Contiguous: Yes
Permitted: Yes
Wet space: No
Addition: No
Conversion: No

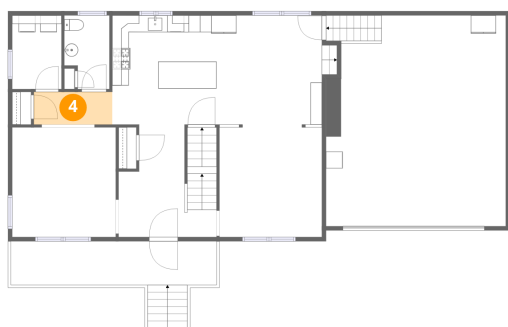
3 Floor 1 - Storage



Dimensions: 12'9" x 15'8"
Area: 200 sq. ft
Counted as living area: No

Heated: No
Finished: No
Enclosed: No
Contiguous: Yes
Permitted: Yes
Wet space: No
Addition: No
Conversion: No

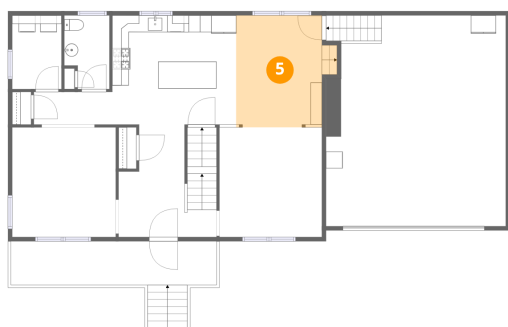
4 Floor 2 - Hall



Dimensions: 9'5" x 3'10"
Area: 37 sq. ft
Counted as living area: Yes

Heated: Yes
Finished: Yes
Enclosed: Yes
Contiguous: Yes
Permitted: Yes
Wet space: No
Addition: No
Conversion: No

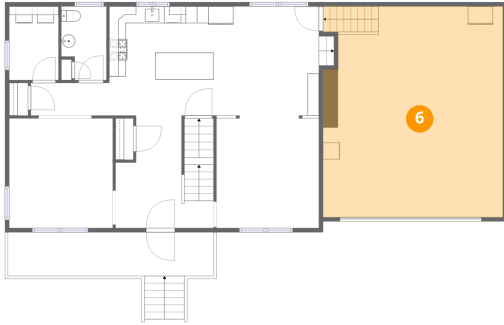
5 Floor 2 - Breakfast Nook



Dimensions: 10'3" x 13'4"
Area: 144 sq. ft
Counted as living area: Yes

Heated: Yes
Finished: Yes
Enclosed: Yes
Contiguous: Yes
Permitted: Yes
Wet space: No
Addition: No
Conversion: No

6 Floor 2 - Garage



Dimensions: 21'6" x 25'2"
Area: 534 sq. ft
Counted as living area: No

Heated: No
Finished: No
Enclosed: Yes
Contiguous: Yes
Permitted: Yes
Wet space: No
Addition: No
Conversion: No

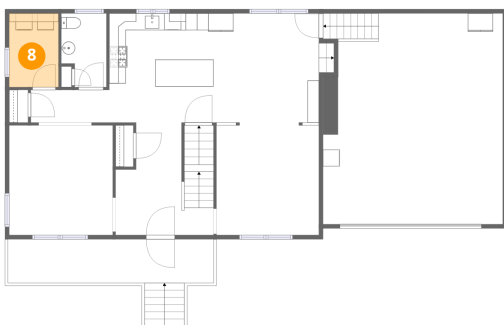
7 Floor 2 - Bath



Dimensions: 5'5" x 8'10"
Area: 43 sq. ft
Counted as living area: Yes

Heated: Yes
Finished: Yes
Enclosed: Yes
Contiguous: Yes
Permitted: Yes
Wet space: Yes
Addition: No
Conversion: No

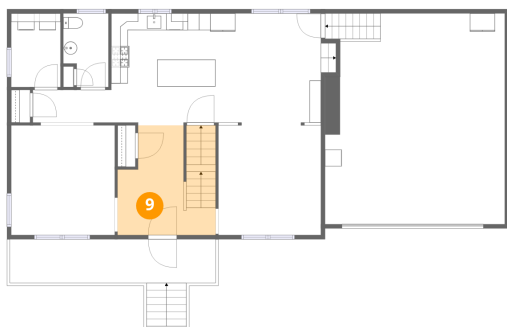
8 Floor 2 - Laundry



Dimensions: 5'11" x 8'10"
Area: 52 sq. ft
Counted as living area: Yes

Heated: Yes
Finished: Yes
Enclosed: Yes
Contiguous: Yes
Permitted: Yes
Wet space: No
Addition: No
Conversion: No

9 Floor 2 - Foyer



Dimensions: 11'9" x 13'1"
Area: 139 sq. ft
Counted as living area: Yes

Heated: Yes
Finished: Yes
Enclosed: Yes
Contiguous: Yes
Permitted: Yes
Wet space: No
Addition: No
Conversion: No

10 Floor 2 - Dining Area



Dimensions: 12'3" x 13'1"
Area: 161 sq. ft
Counted as living area: Yes

Heated: Yes
Finished: Yes
Enclosed: Yes
Contiguous: Yes
Permitted: Yes
Wet space: No
Addition: No
Conversion: No

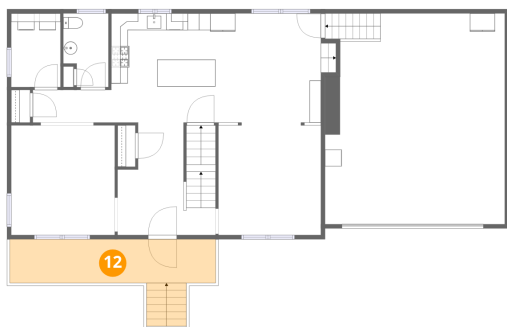
11 Floor 2 - Den / Office



Dimensions: 12'5" x 13'1"
Area: 163 sq. ft
Counted as living area: Yes

Heated: Yes
Finished: Yes
Enclosed: Yes
Contiguous: Yes
Permitted: Yes
Wet space: No
Addition: No
Conversion: No

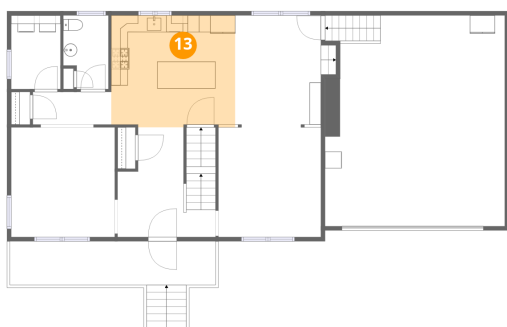
12 Floor 2 - Porch



Dimensions: 24'7" x 5'2"
Area: 153 sq. ft
Counted as living area: No

Heated: No
Finished: No
Enclosed: No
Contiguous: Yes
Permitted: Yes
Wet space: No
Addition: No
Conversion: No

13 Floor 2 - Kitchen



Dimensions: 14'10" x 13'5"
Area: 196 sq. ft
Counted as living area: Yes

Heated: Yes
Finished: Yes
Enclosed: Yes
Contiguous: Yes
Permitted: Yes
Wet space: No
Addition: No
Conversion: No

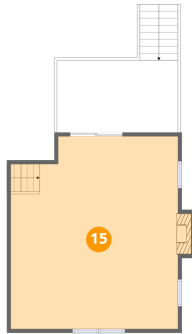
14 Floor 3 - Deck



Dimensions: 15'7" x 9'3"
Area: 180 sq. ft
Counted as living area: No

Heated: No
Finished: No
Enclosed: No
Contiguous: Yes
Permitted: Yes
Wet space: No
Addition: No
Conversion: No

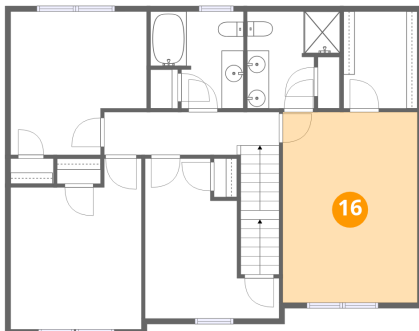
15 Floor 3 - Family Room



Dimensions: 21'6" x 24'9"
Area: 520 sq. ft
Counted as living area: Yes

Heated: Yes
Finished: Yes
Enclosed: Yes
Contiguous: Yes
Permitted: Yes
Wet space: No
Addition: No
Conversion: No

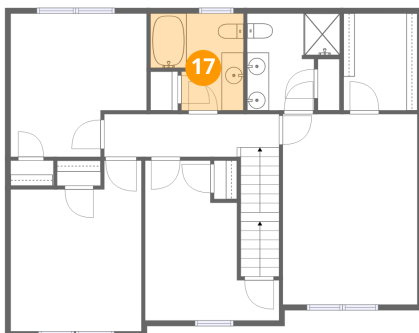
16 Floor 4 - Primary Bedroom



Dimensions: 12'3" x 17'4"
Area: 213 sq. ft
Counted as living area: Yes

Heated: Yes
Finished: Yes
Enclosed: Yes
Contiguous: Yes
Permitted: Yes
Wet space: No
Addition: No
Conversion: No

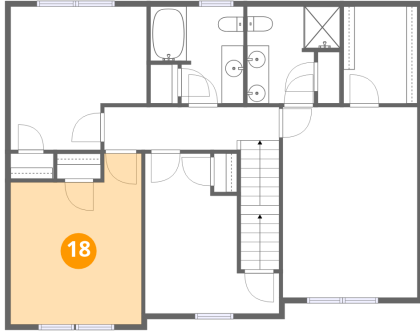
17 Floor 4 - Bath



Dimensions: 8'6" x 8'10"
Area: 64 sq. ft
Counted as living area: Yes

Heated: Yes
Finished: Yes
Enclosed: Yes
Contiguous: Yes
Permitted: Yes
Wet space: Yes
Addition: No
Conversion: No

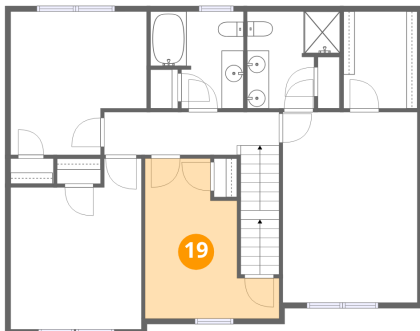
18 Floor 4 - Bedroom



Dimensions: 11'11" x 15'7"
Area: 163 sq. ft
Counted as living area: Yes

Heated: Yes
Finished: Yes
Enclosed: Yes
Contiguous: Yes
Permitted: Yes
Wet space: No
Addition: No
Conversion: No

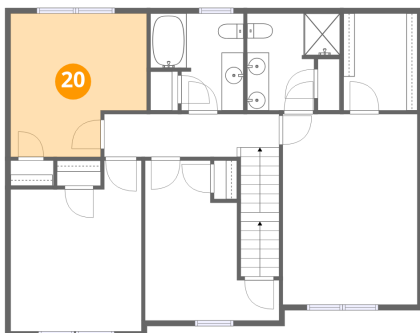
19 Floor 4 - Bedroom



Dimensions: 12'3" x 14'7"
Area: 127 sq. ft
Counted as living area: Yes

Heated: Yes
Finished: Yes
Enclosed: Yes
Contiguous: Yes
Permitted: Yes
Wet space: No
Addition: No
Conversion: No

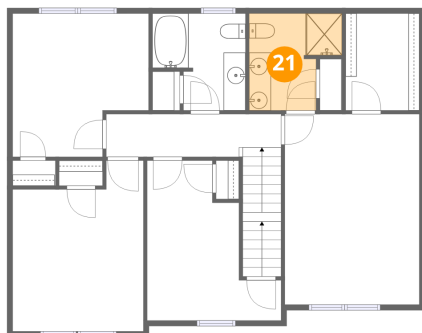
20 Floor 4 - Bedroom



Dimensions: 12'5" x 13'1"
Area: 144 sq. ft
Counted as living area: Yes

Heated: Yes
Finished: Yes
Enclosed: Yes
Contiguous: Yes
Permitted: Yes
Wet space: No
Addition: No
Conversion: No

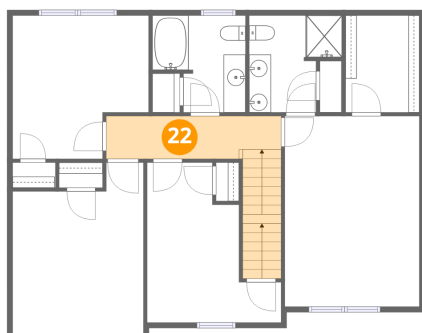
21 Floor 4 - Bath



Dimensions: 8'6" x 8'10"
Area: 62 sq. ft
Counted as living area: Yes

Heated: Yes
Finished: Yes
Enclosed: Yes
Contiguous: Yes
Permitted: Yes
Wet space: Yes
Addition: No
Conversion: No

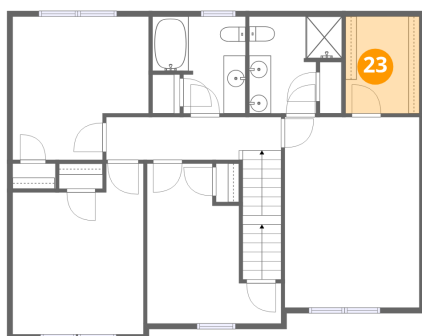
22 Floor 4 - Hall



Dimensions: 15'11" x 3'10"
Area: 100 sq. ft
Counted as living area: Yes

Heated: Yes
Finished: Yes
Enclosed: Yes
Contiguous: Yes
Permitted: Yes
Wet space: No
Addition: No
Conversion: No

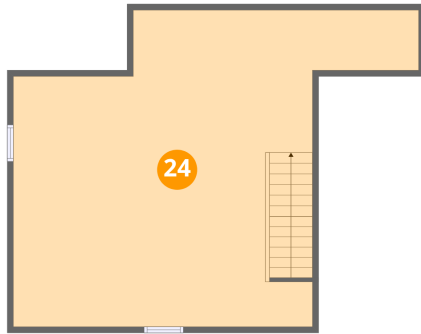
23 Floor 4 - W.I.C.



Dimensions: 6'9" x 8'10"
Area: 59 sq. ft
Counted as living area: Yes

Heated: Yes
Finished: Yes
Enclosed: Yes
Contiguous: Yes
Permitted: Yes
Wet space: No
Addition: No
Conversion: No

24 Floor 5 - Attic



Dimensions: 24'6" x 25'11"
Area: 622 sq. ft
Counted as living area: No

Heated: No
Finished: No
Enclosed: Yes
Contiguous: Yes
Permitted: Yes
Wet space: No
Addition: No
Conversion: No