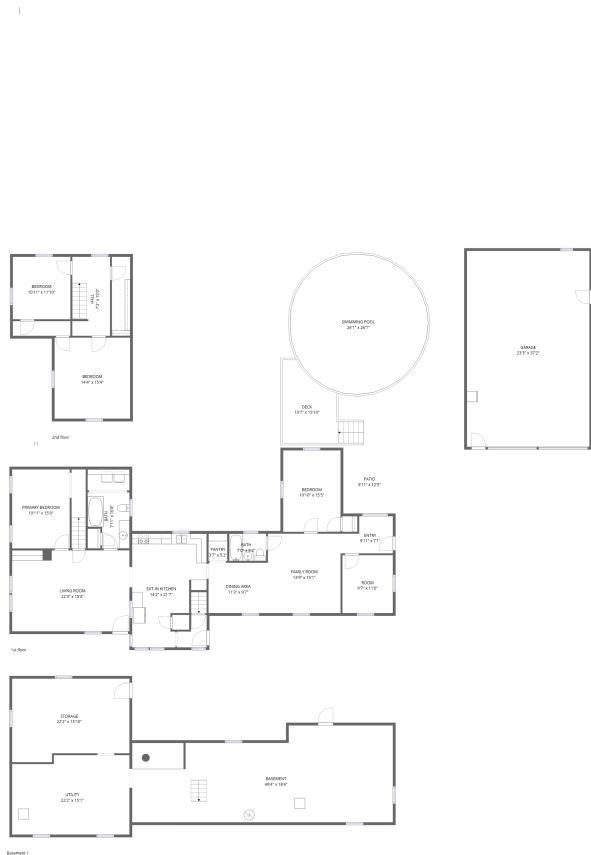


Home data report

9065 New York Highway 474, French Creek, Clymer, Chautauqua County, New York, United States, 14724

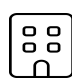


Total Area: 2290 sq. ft

Basement 1: 0 sq. ft, 1st Floor: 1732 sq. ft, 2nd Floor: 558 sq. ft

Excluded: Utility 336 sq. ft, Basement 810 sq. ft, Storage 327 sq. ft, Patio 124 sq. ft, Deck 153 sq. ft, Garage 862 sq. ft, Walls: 344 sq. ft

Property summary

 **3** Floors

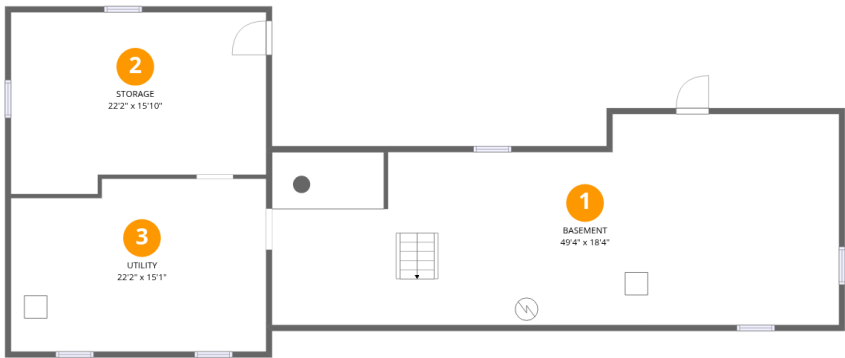
 **4** Bedrooms

 **2** Bathrooms

 **1** Garages

Home data report

9065 New York Highway 474, French Creek, Clymer, Chautauqua County, New York, United States, 14724



Room dimensions

Floor 1 Below grade Total:0sqft Excluded: 1473sqft

#		Dimensions	sqft	Counted as living area
1	Basement	49'4" x 18'4"	907 sq. ft	No
2	Storage	22'2" x 15'10"	352 sq. ft	No
3	Utility	22'2" x 15'1"	334 sq. ft	No

Home data report

9065 New York Highway 474, French Creek, Clymer, Chautauqua County, New York, United States, 14724



Room dimensions

Floor 2 Total:1732sqft Excluded: 1139sqft

#		Dimensions	sqft	Counted as living area
4	Bath	7'0" x 5'2"	36 sq. ft	Yes
5	Bath	7'11" x 10'8"	85 sq. ft	Yes
6	Swimming Pool	26'1" x 26'1"	679 sq. ft	No
7	Bedroom	10'10" x 15'5"	168 sq. ft	Yes
8	Deck	10'7" x 15'10"	168 sq. ft	No
9	Living Room	22'3" x 15'4"	342 sq. ft	Yes
10	Patio	9'11" x 12'5"	123 sq. ft	No
11	Pantry	3'7" x 5'2"	18 sq. ft	Yes
12	Garage	23'3" x 37'2"	862 sq. ft	No
13	Dining Area	11'3" x 9'7"	107 sq. ft	Yes
14	Eat-in Kitchen	14'2" x 21'7"	305 sq. ft	Yes

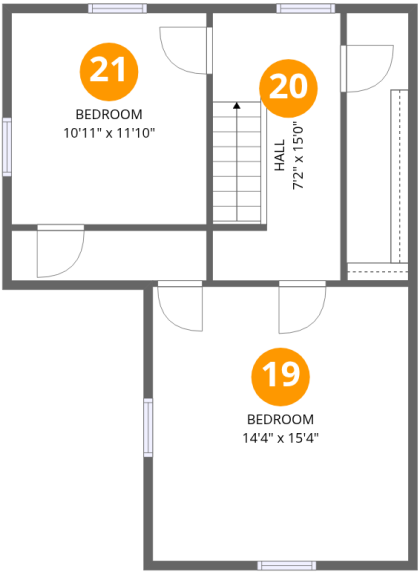
Home data report

9065 New York Highway 474, French Creek, Clymer, Chautauqua County, New York, United States, 14724

#		Dimensions	sqft	Counted as living area
15	Room	9'7" x 11'0"	105 sq. ft	Yes
16	Primary Bedroom	10'11" x 15'0"	164 sq. ft	Yes
17	Family Room	13'9" x 15'1"	207 sq. ft	Yes
18	Entry	9'11" x 7'1"	70 sq. ft	Yes

Home data report

9065 New York Highway 474, French Creek, Clymer, Chautauqua County, New York, United States, 14724

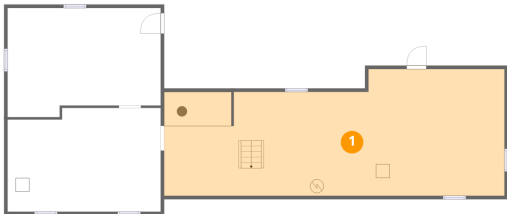


Room dimensions

Floor 3 Total:558sqft Excluded: 0sqft

#		Dimensions	sqft	Counted as living area
19	Bedroom	14'4" x 15'4"	220 sq. ft	Yes
20	Hall	7'2" x 15'0"	107 sq. ft	Yes
21	Bedroom	10'11" x 11'10"	129 sq. ft	Yes

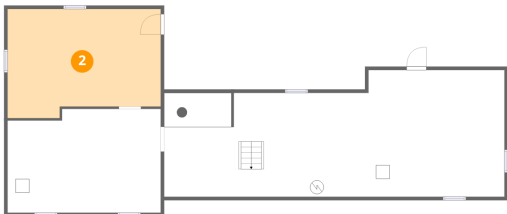
1 Floor 1 - Basement



Dimensions: 49'4" x 18'4"
Area: 907 sq. ft
Counted as living area: No

Heated: Yes
Finished: No
Enclosed: Yes
Contiguous: Yes
Permitted: Yes
Wet space: No
Addition: No
Conversion: No

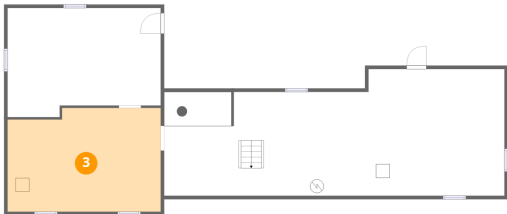
2 Floor 1 - Storage



Dimensions: 22'2" x 15'10"
Area: 352 sq. ft
Counted as living area: No

Heated: No
Finished: No
Enclosed: No
Contiguous: Yes
Permitted: Yes
Wet space: No
Addition: No
Conversion: No

3 Floor 1 - Utility



Dimensions: 22'2" x 15'1"
Area: 334 sq. ft
Counted as living area: No

Heated: Yes
Finished: No
Enclosed: Yes
Contiguous: Yes
Permitted: Yes
Wet space: No
Addition: No
Conversion: No

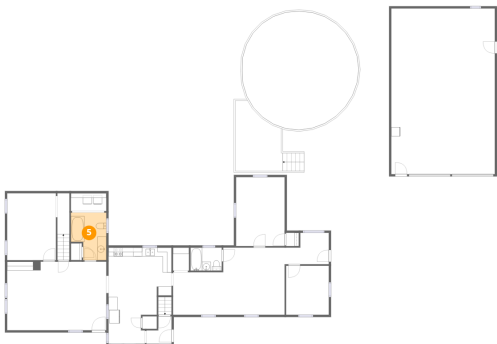
4 Floor 2 - Bath



Dimensions: 7'0" x 5'2"
Area: 36 sq. ft
Counted as living area: Yes

Heated: Yes
Finished: Yes
Enclosed: Yes
Contiguous: Yes
Permitted: Yes
Wet space: Yes
Addition: No
Conversion: No

5 Floor 2 - Bath

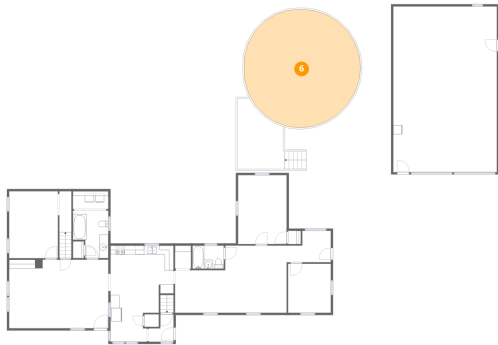


Dimensions: 7'11" x 10'8"
Area: 85 sq. ft
Counted as living area: Yes

Heated: Yes
Finished: Yes
Enclosed: Yes
Contiguous: Yes
Permitted: Yes
Wet space: Yes
Addition: No
Conversion: No

9065 New York Highway 474, French Creek, Clymer, Chautauqua County, New York, United States, 14724

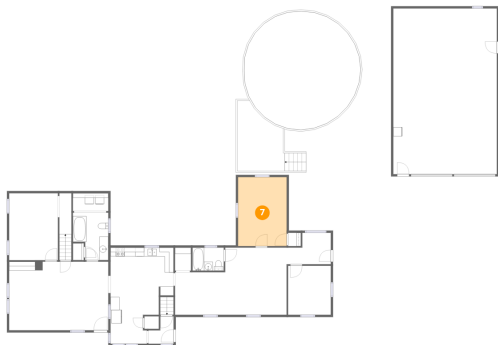
6 Floor 2 - Swimming Pool



Dimensions: 26'1" x 26'1"
Area: 679 sq. ft
Counted as living area: No

Heated: No
Finished: No
Enclosed: No
Contiguous: Yes
Permitted: No
Wet space: No
Addition: No
Conversion: No

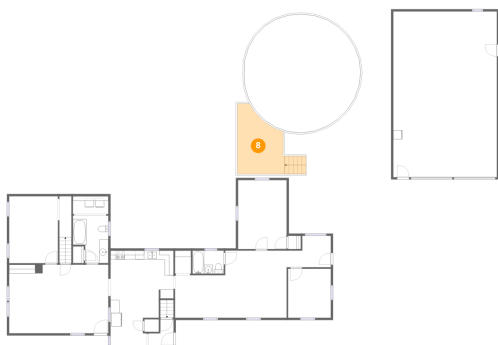
7 Floor 2 - Bedroom



Dimensions: 10'10" x 15'5"
Area: 168 sq. ft
Counted as living area: Yes

Heated: Yes
Finished: Yes
Enclosed: Yes
Contiguous: Yes
Permitted: Yes
Wet space: No
Addition: No
Conversion: No

8 Floor 2 - Deck

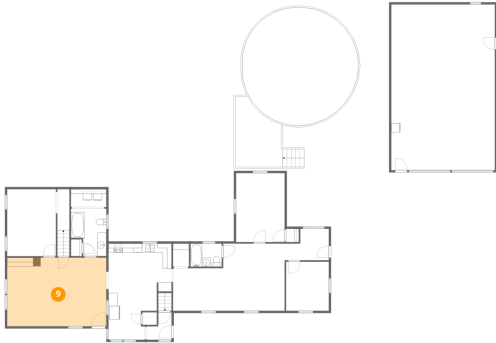


Dimensions: 10'7" x 15'10"
Area: 168 sq. ft
Counted as living area: No

Heated: No
Finished: No
Enclosed: No
Contiguous: Yes
Permitted: Yes
Wet space: No
Addition: No
Conversion: No

9065 New York Highway 474, French Creek, Clymer, Chautauqua County, New York, United States, 14724

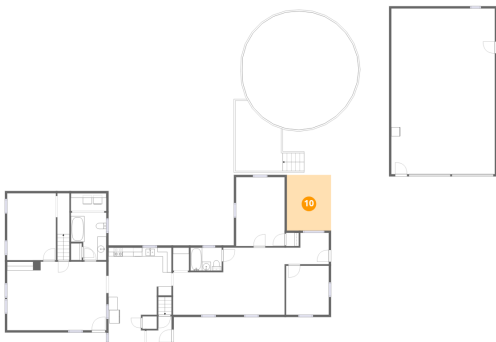
9 Floor 2 - Living Room



Dimensions: 22'3" x 15'4"
Area: 342 sq. ft
Counted as living area: Yes

Heated: Yes
Finished: Yes
Enclosed: Yes
Contiguous: Yes
Permitted: Yes
Wet space: No
Addition: No
Conversion: No

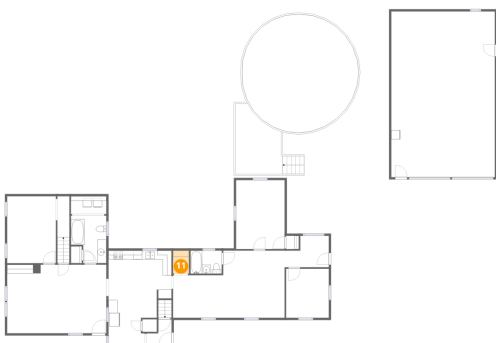
10 Floor 2 - Patio



Dimensions: 9'11" x 12'5"
Area: 123 sq. ft
Counted as living area: No

Heated: No
Finished: No
Enclosed: No
Contiguous: Yes
Permitted: Yes
Wet space: No
Addition: No
Conversion: No

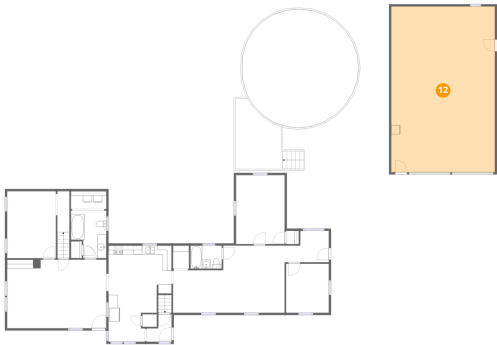
11 Floor 2 - Pantry



Dimensions: 3'7" x 5'2"
Area: 18 sq. ft
Counted as living area: Yes

Heated: Yes
Finished: Yes
Enclosed: Yes
Contiguous: Yes
Permitted: Yes
Wet space: No
Addition: No
Conversion: No

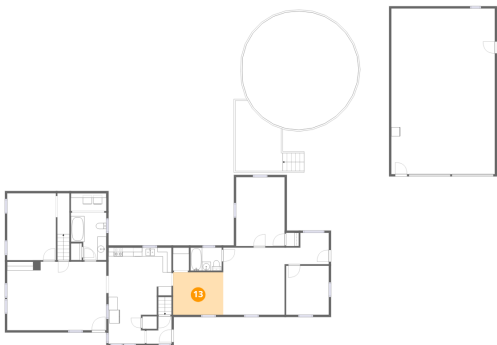
12 Floor 2 - Garage



Dimensions: 23'3" x 37'2"
Area: 862 sq. ft
Counted as living area: No

Heated: No
Finished: No
Enclosed: Yes
Contiguous: Yes
Permitted: Yes
Wet space: No
Addition: No
Conversion: No

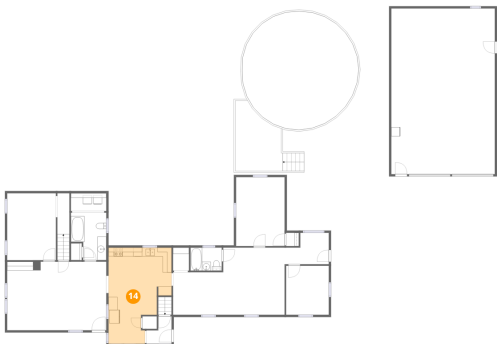
13 Floor 2 - Dining Area



Dimensions: 11'3" x 9'7"
Area: 107 sq. ft
Counted as living area: Yes

Heated: Yes
Finished: Yes
Enclosed: Yes
Contiguous: Yes
Permitted: Yes
Wet space: No
Addition: No
Conversion: No

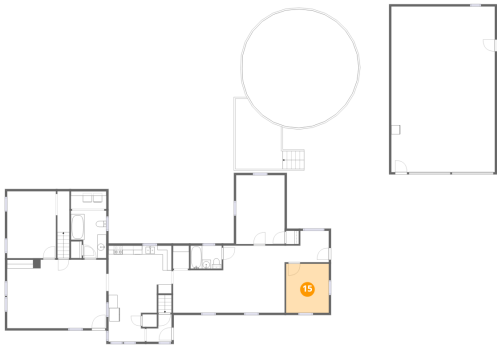
14 Floor 2 - Eat-in Kitchen



Dimensions: 14'2" x 21'7"
Area: 305 sq. ft
Counted as living area: Yes

Heated: Yes
Finished: Yes
Enclosed: Yes
Contiguous: Yes
Permitted: Yes
Wet space: No
Addition: No
Conversion: No

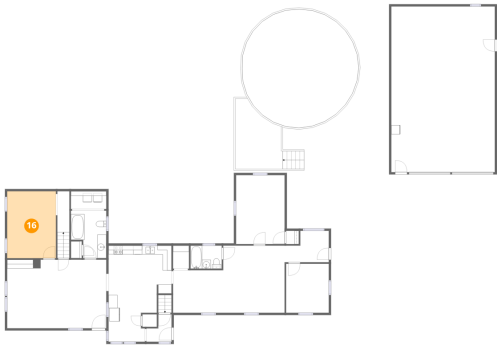
15 Floor 2 - Room



Dimensions: 9'7" x 11'0"
Area: 105 sq. ft
Counted as living area: Yes

Heated: Yes
Finished: Yes
Enclosed: Yes
Contiguous: Yes
Permitted: Yes
Wet space: No
Addition: No
Conversion: No

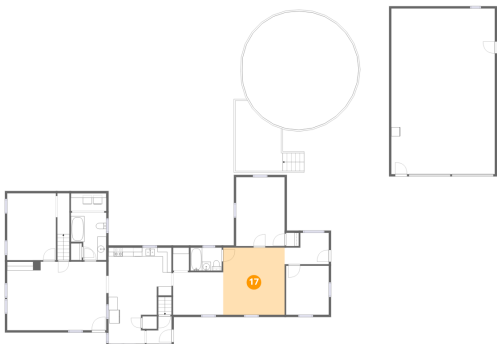
16 Floor 2 - Primary Bedroom



Dimensions: 10'11" x 15'0"
Area: 164 sq. ft
Counted as living area: Yes

Heated: Yes
Finished: Yes
Enclosed: Yes
Contiguous: Yes
Permitted: Yes
Wet space: No
Addition: No
Conversion: No

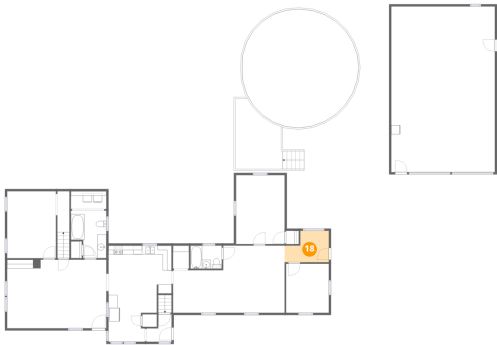
17 Floor 2 - Family Room



Dimensions: 13'9" x 15'1"
Area: 207 sq. ft
Counted as living area: Yes

Heated: Yes
Finished: Yes
Enclosed: Yes
Contiguous: Yes
Permitted: Yes
Wet space: No
Addition: No
Conversion: No

18 Floor 2 - Entry



Dimensions: 9'11" x 7'1"
Area: 70 sq. ft
Counted as living area: Yes

Heated: Yes
Finished: Yes
Enclosed: Yes
Contiguous: Yes
Permitted: Yes
Wet space: No
Addition: No
Conversion: No

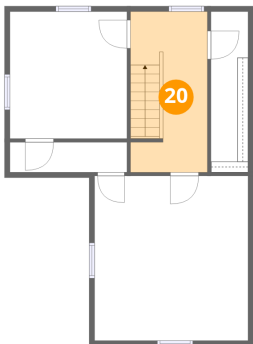
19 Floor 3 - Bedroom



Dimensions: 14'4" x 15'4"
Area: 220 sq. ft
Counted as living area: Yes

Heated: Yes
Finished: Yes
Enclosed: Yes
Contiguous: Yes
Permitted: Yes
Wet space: No
Addition: No
Conversion: No

20 Floor 3 - Hall



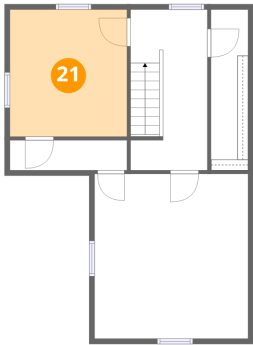
Dimensions: 7'2" x 15'0"
Area: 107 sq. ft
Counted as living area: Yes

Heated: Yes
Finished: Yes
Enclosed: Yes
Contiguous: Yes
Permitted: Yes
Wet space: No
Addition: No
Conversion: No

Home data report

9065 New York Highway 474, French Creek, Clymer, Chautauqua
County, New York, United States, 14724

21 Floor 3 - Bedroom



Dimensions: 10'11" x 11'10"
Area: 129 sq. ft
Counted as living area: Yes

Heated: Yes
Finished: Yes
Enclosed: Yes
Contiguous: Yes
Permitted: Yes
Wet space: No
Addition: No
Conversion: No